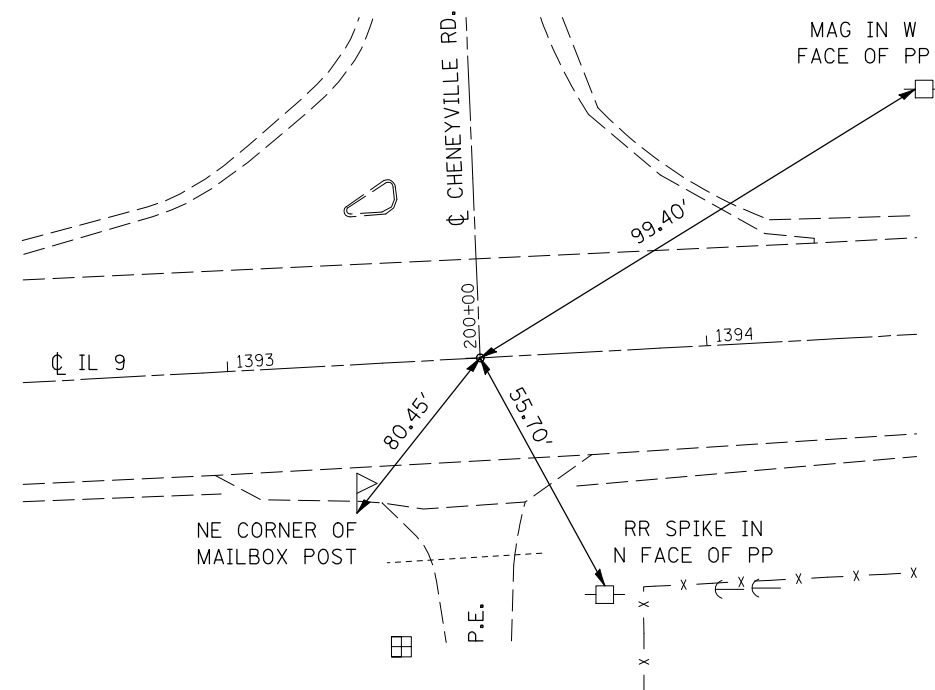
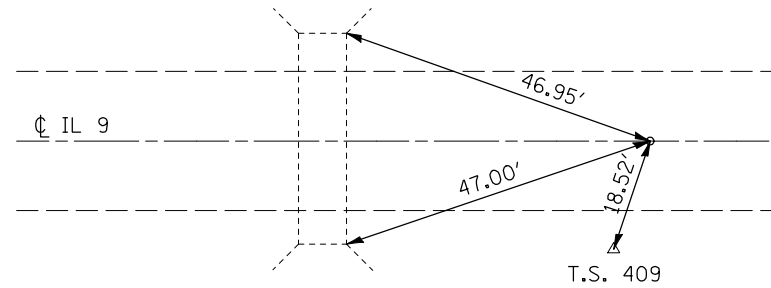


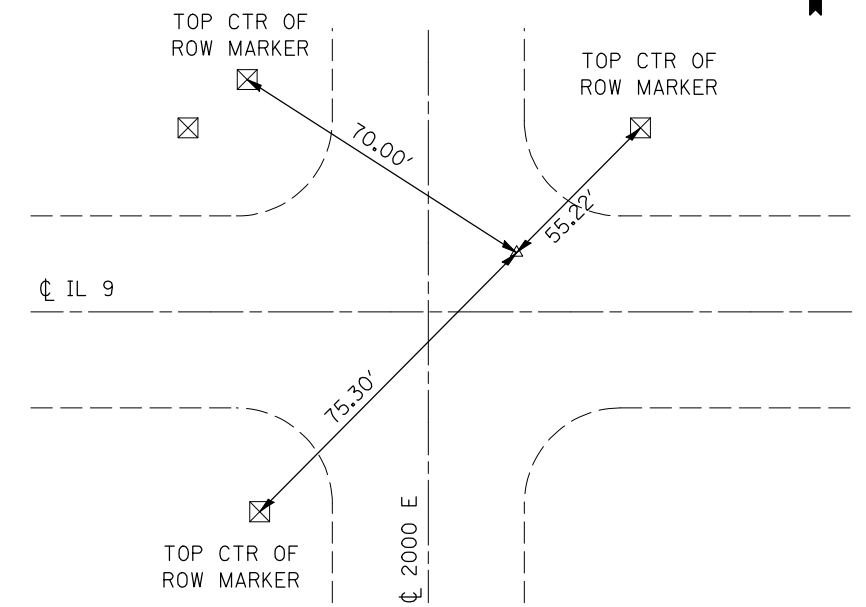
P.I.
STA. 1393 + 52.70 (IL 9)
STA. 200 + 00.00 (CHENEYVILLE RD)



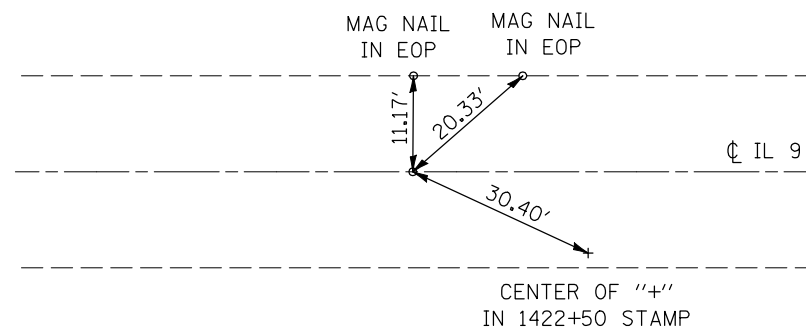
P.C.
STA. 1418 + 31.38



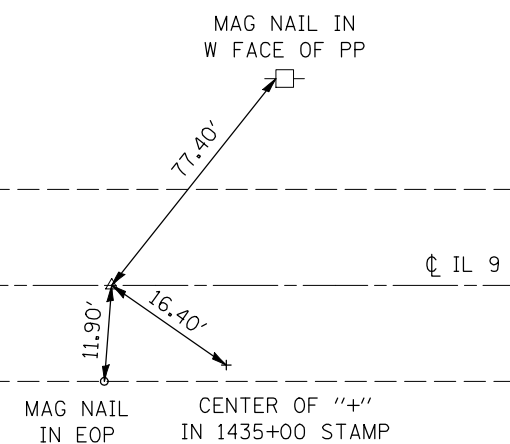
P.I.
STA. 1420 + 27.08, 2.55' LT



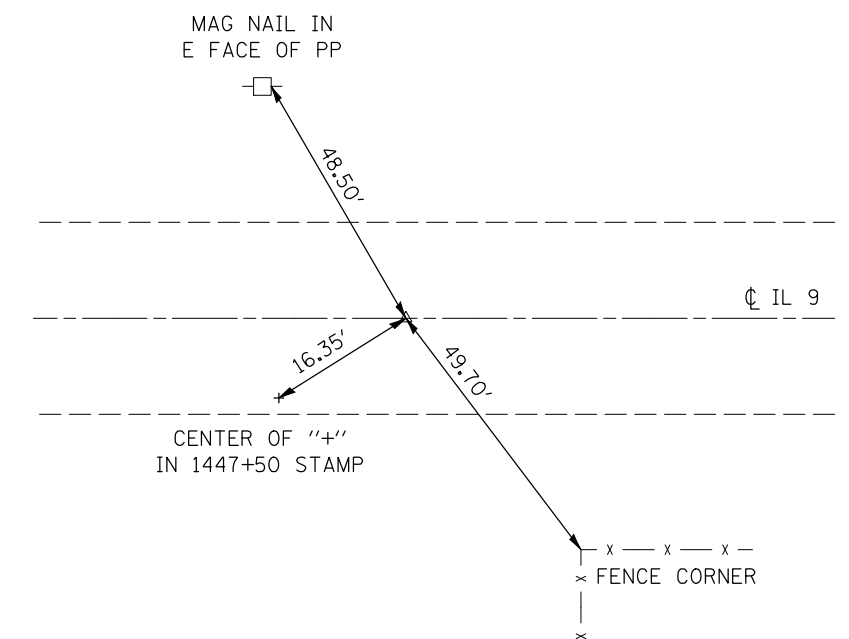
P.T.
STA. 1422 + 22.69



P.I.
STA. 1434 + 90.92



P.I.
STA. 1447 + 63.10



FILE NAME =	USER NAME = ceorlockjd	DESIGNED -	REVISED -
ct:\pw\work\PWIDOT\CEARLOCKJD\dms87652\690866-sh1-ATB.dgn		DRAWN -	REVISED -
		CHECKED -	REVISED -
		DATE -	REVISED -

STATE OF ILLINOIS
DEPARTMENT OF TRANSPORTATION

TIE POINTS

SCALE: SHEET NO. OF SHEETS STA. TO STA.

F.A.P. RTE.	SECTION	COUNTY	TOTAL SHEETS	SHEET NO.
697	46RS-8&1RS-2&46BDR	VERMILION	75	21
FED. ROAD DIST. NO. ILLINOIS FED. AID PROJECT			CONTRACT NO. 90866	