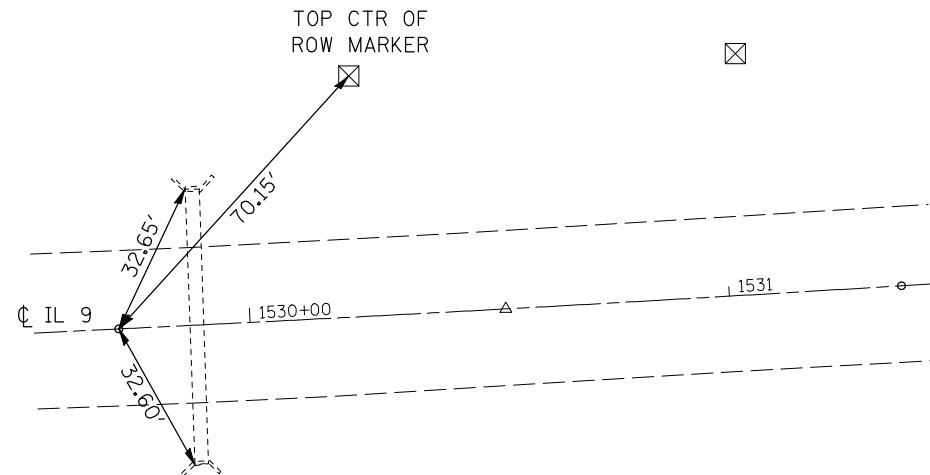
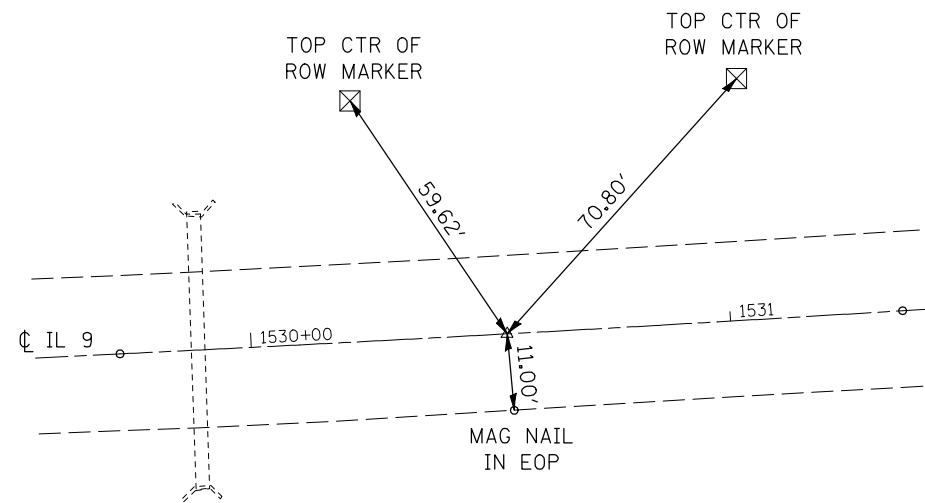


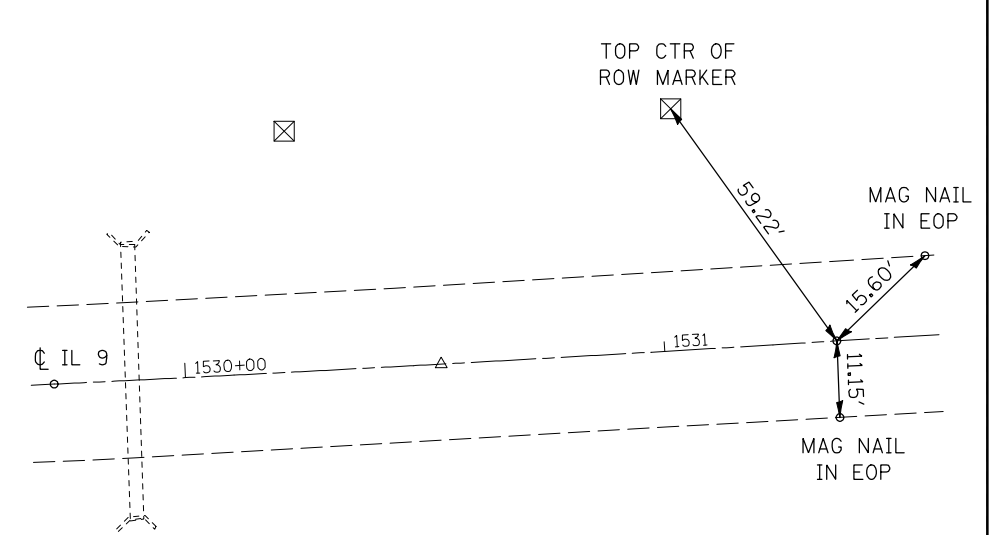
P.C.
STA. 1529 + 72.60



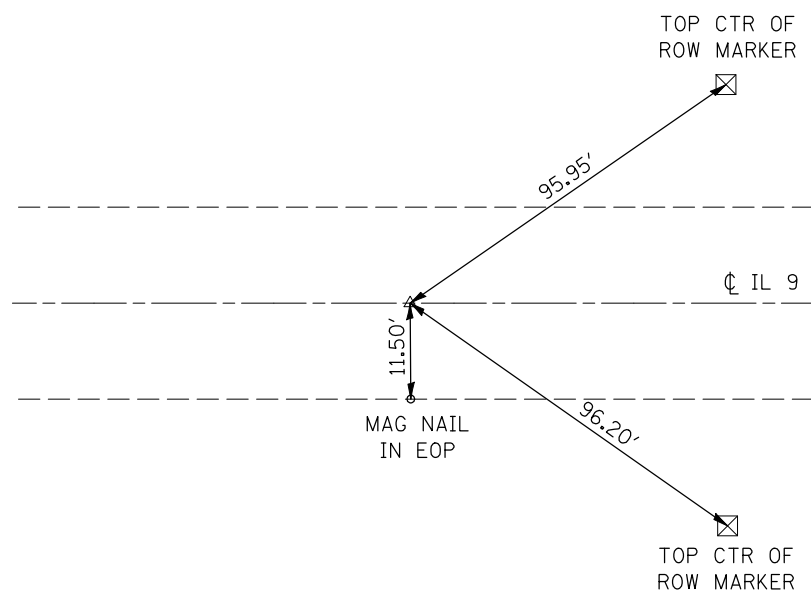
P.I.
STA. 1530 + 54.27, 0.28' RT.



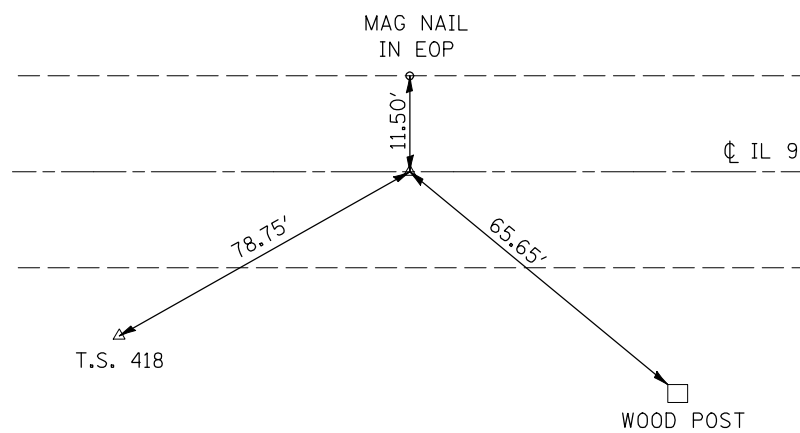
P.T.
STA. 1531 + 35.93



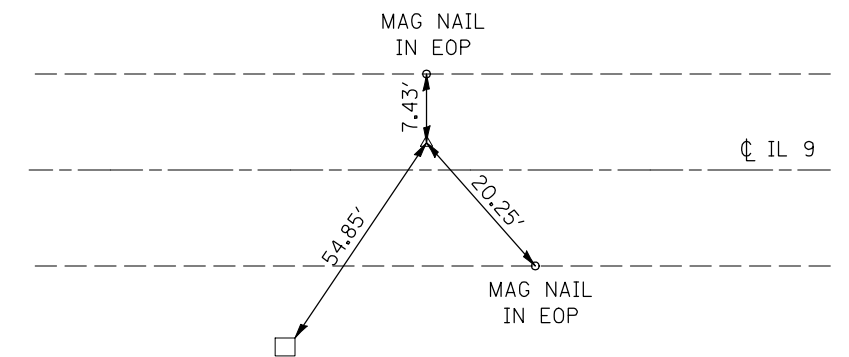
P.I.
STA. 1539 + 42.44



P.C.
STA. 1547 + 86.00



P.I.
STA. 1550 + 32.31, 3.86' LT.



| | | | |
|---|------------------------|------------|-----------|
| FILE NAME = | USER NAME = ceorlockjd | DESIGNED - | REVISED - |
| ct:\pw\work\PIWIDOT\CEARLOCKJD\dms87652\4590866-sh1-ATB.dgn | | DRAWN - | REVISED - |
| | | CHECKED - | REVISED - |
| | | DATE - | REVISED - |
| | | | |

STATE OF ILLINOIS
DEPARTMENT OF TRANSPORTATION

TIE POINTS

SCALE: SHEET NO. OF SHEETS STA. TO STA.

| | | | | |
|---|--------------------|-----------|--------------------|-----------|
| F.A.P. RTE. | SECTION | COUNTY | TOTAL SHEETS | SHEET NO. |
| 697 | 46RS-8&1RS-2&46BDR | VERMILION | 75 | 23 |
| FED. ROAD DIST. NO. ILLINOIS FED. AID PROJECT | | | CONTRACT NO. 90866 | |