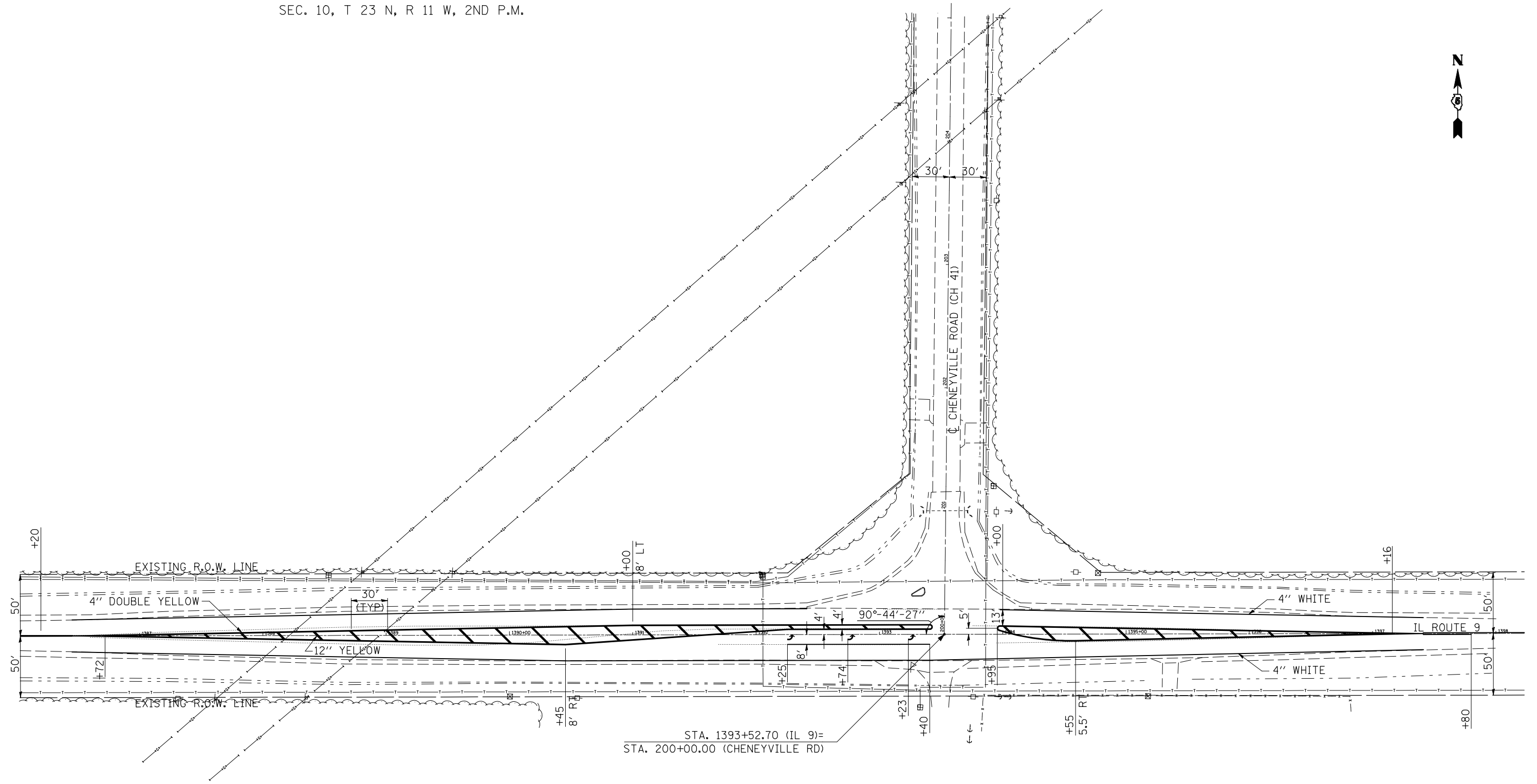


SEC. 10, T 23 N, R 11 W, 2ND P.M.



STA. 1393+52.70 (IL 9)=
STA. 200+00.00 (CHENEYVILLE RD)

PLAN NOTE: ALL STRIPING SHOWN ON THIS SHEET
SHALL BE THERMOPLASTIC.

SEC. 15, T 23 N, R 11 W, 2ND P.M.

FILE NAME =	USER NAME = ceorlockjd	DESIGNED - DMH	REVISED -
et\pw\work\PWIDOT\CEARLOCKJD\dms87652\90866sheets.dgn		DRAWN -	REVISED -
	PLOT SCALE = 80.0000' / IN.	CHECKED -	REVISED -
	PLOT DATE = 2/6/2009	DATE -	REVISED -

**STATE OF ILLINOIS
DEPARTMENT OF TRANSPORTATION**

**STRIPING DETAILS -
CHENEYVILLE ROAD (CH 41)**

SCALE: SHEET NO. OF SHEETS STA. 1386+00 TO STA. 1398+00

F.A.P. RTE.	SECTION	COUNTY	TOTAL SHEETS	SHEET NO.
697	46RS-8&1RS-2&46BDR	VERMILION	75	34
CONTRACT NO. 90866				
FED. ROAD DIST. NO. ILLINOIS FED. AID PROJECT				