

JOINT REPAIR AT WEST ABUTMENT

S.N. 092-0048

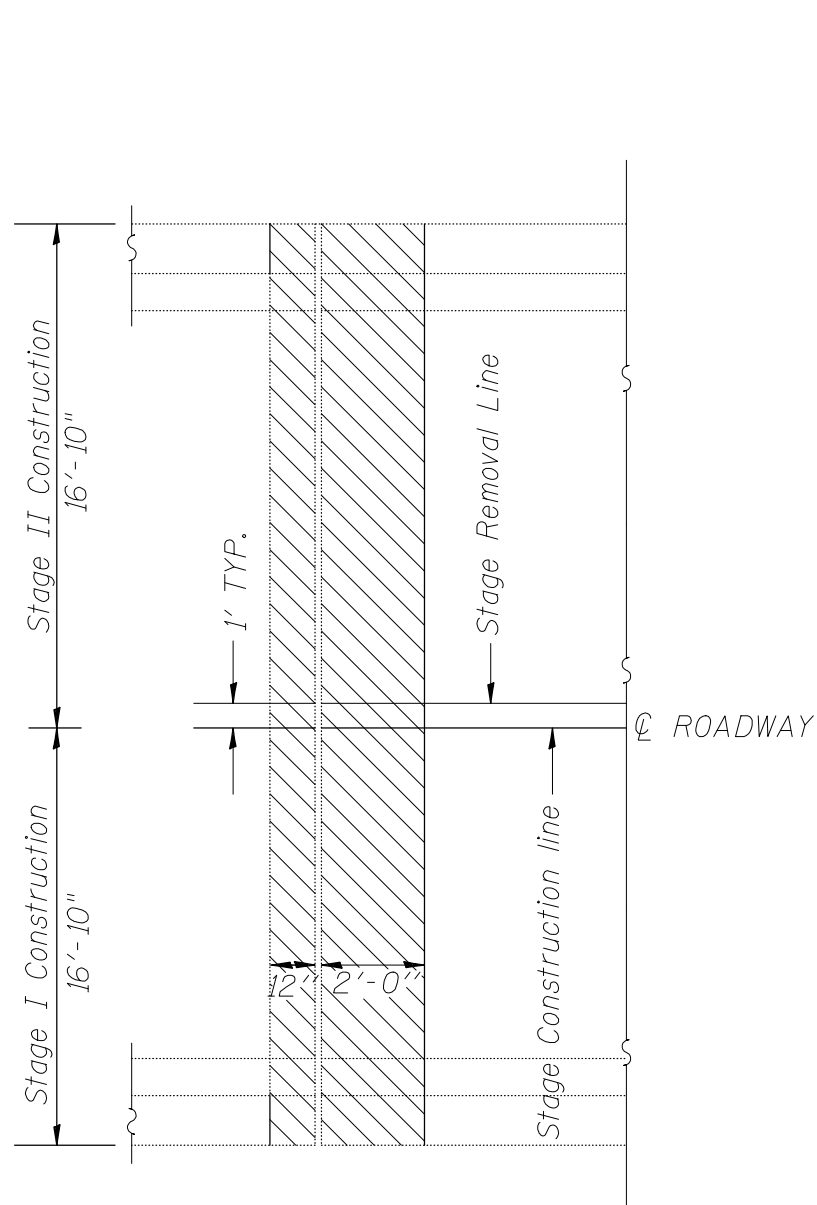
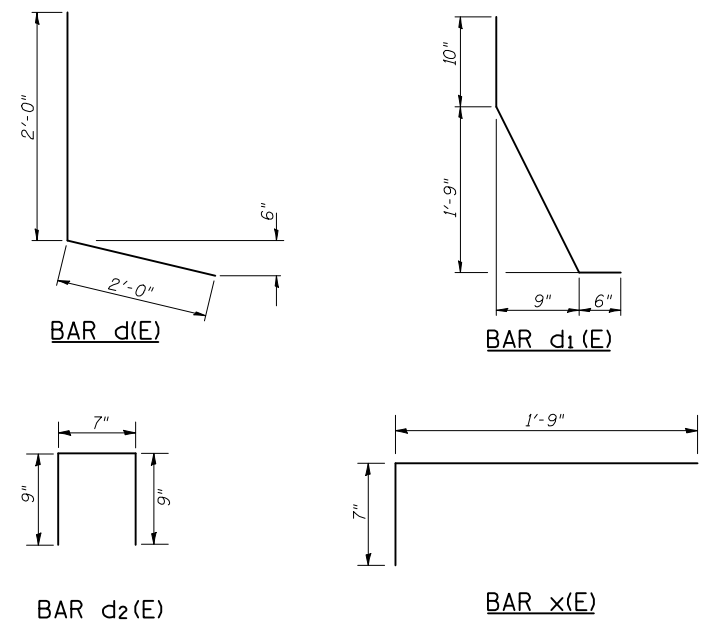
BILL OF MATERIAL

Bar	No.	Size	Length	Shape
a (E)	16	#5	16'-2"	—
a ₁ (E)	6	#5	16'-2"	—
d(E)	4	#4	4'-0"	└┘
d ₁ (E)	4	#6	3'-7"	└┘
d ₂ (E)	4	#4	2'-1"	└┘
x(E)	30	#5	2'-4"	└┘
Reinforcement Bars, Epoxy Coated		Pound	490	
Concrete Superstructure		Cu. Yd.	4.65	
Concrete Removal		Cu. Yd.	4.5	

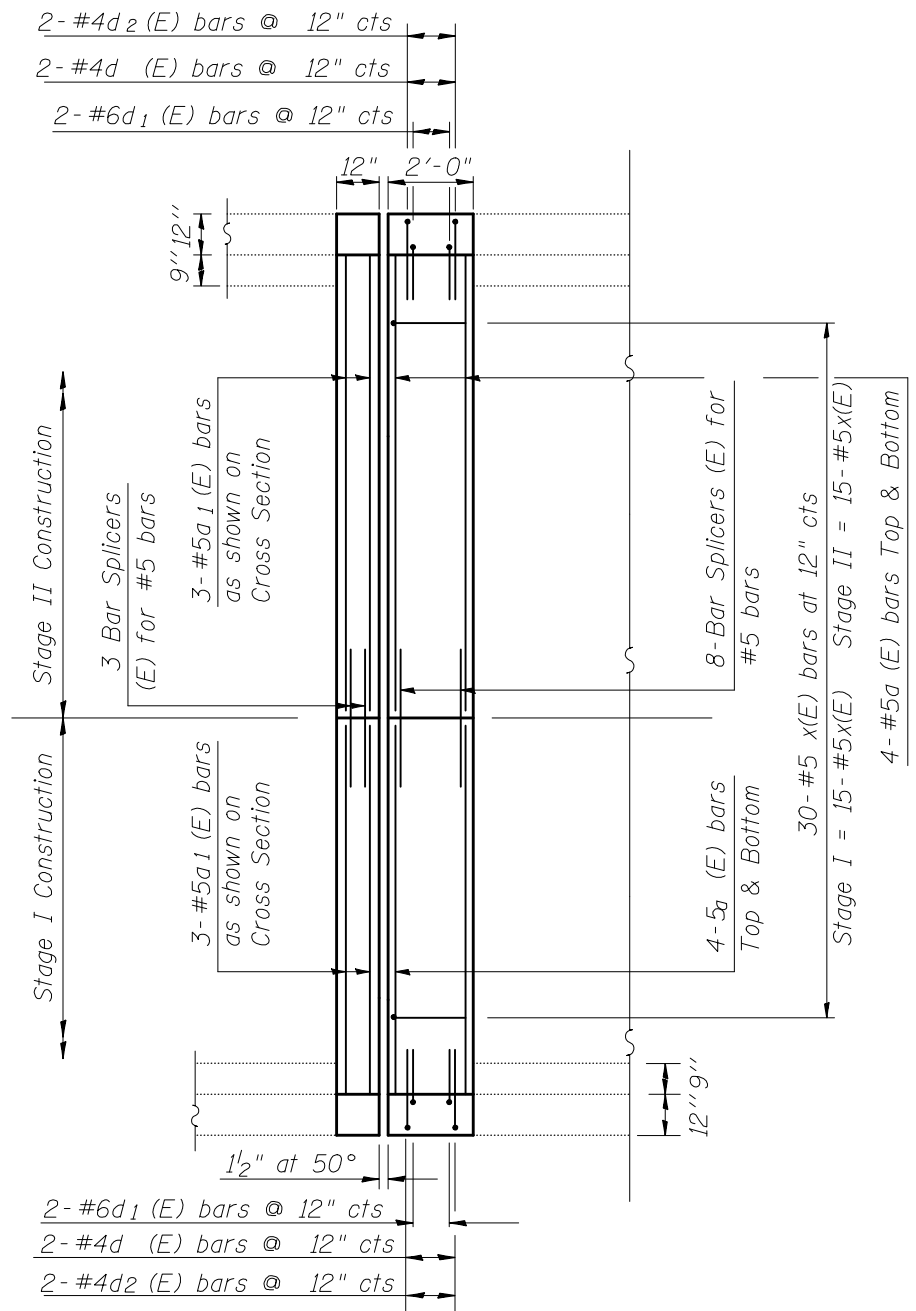
Reinforcement bars designated (E) shall be epoxy coated.

Hatched area indicates Concrete Removal.

See Sheet 11 of 17 for Section Thru Parapet and Proposed Joint Section



EXISTING PARTIAL PLAN
JOINT AT WEST ABUTMENT



PROPOSED PARTIAL PLAN
JOINT AT WEST ABUTMENT