

# JOINT REPAIR AT EAST ABUTMENT

## S.N. 092-0048

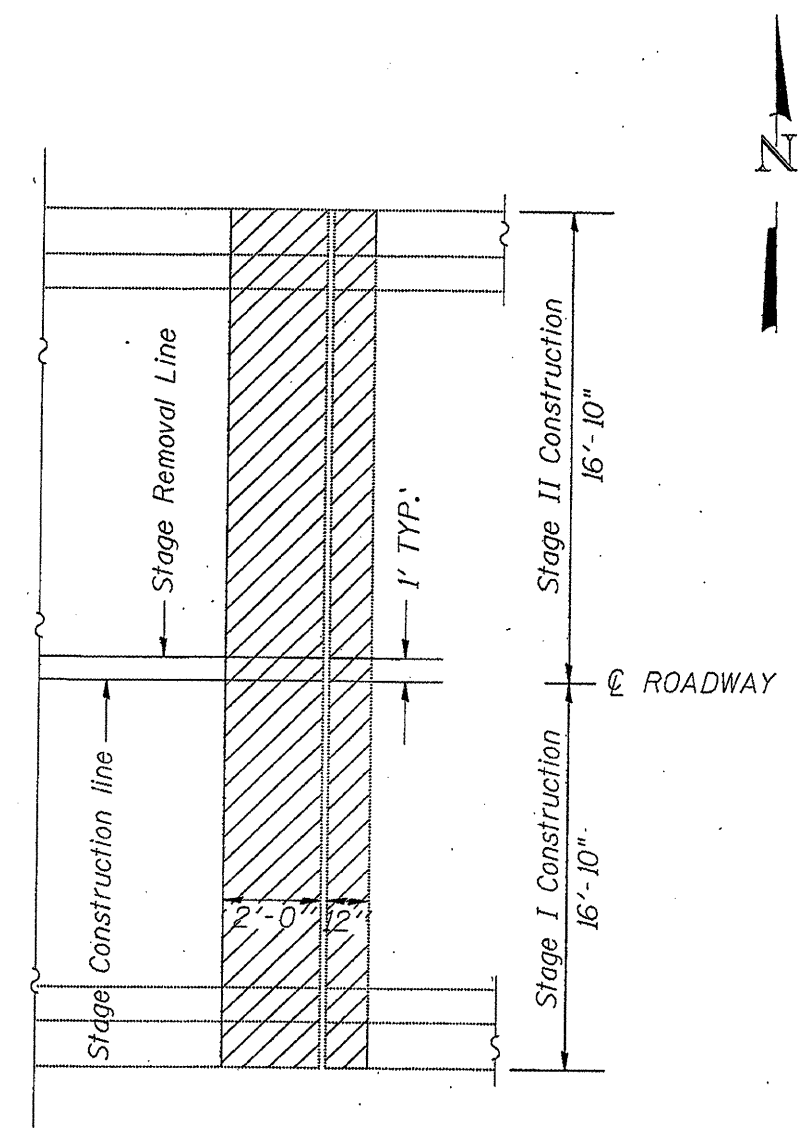
### BILL OF MATERIAL

Bar	No.	Size	Length	Shape
a (E)	16	#5	16'-2"	—
a <sub>1</sub> (E)	6	#5	16'-2"	—
d(E)	4	#4	4'-0"	┘
d <sub>1</sub> (E)	4	#6	3'-7"	┘
d <sub>2</sub> (E)	4	#4	2'-1"	┘
x(E)	30	#5	2'-4"	┘
Reinforcement Bars, Epoxy Coated			Pound	490
Concrete Superstructure			Cu. Yd.	4.65
Concrete Removal			Cu. Yd.	4.2

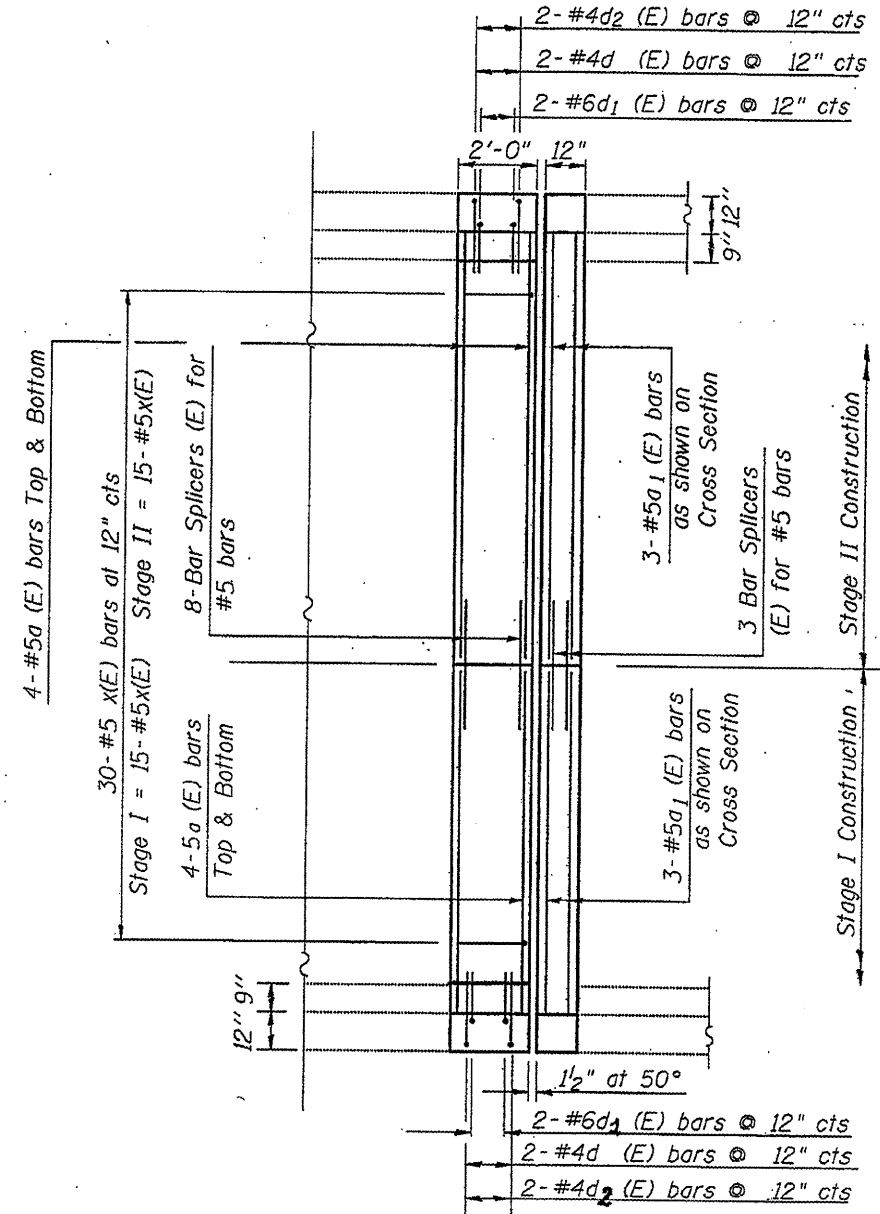
Reinforcement bars designated (E) shall be epoxy coated.

Hatched area indicates Concrete Removal.

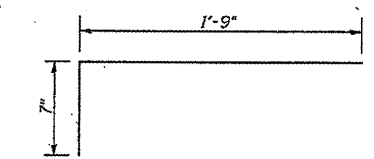
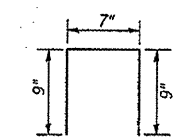
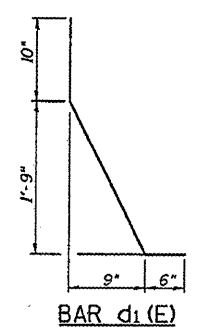
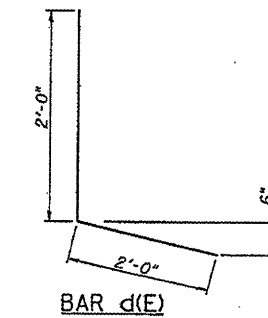
See Sheet 13 of 17 for Section Thru Parapet and Proposed Joint Section



**EXISTING PARTIAL PLAN**  
JOINT AT EAST ABUTMENT



**PROPOSED PARTIAL PLAN**  
JOINT AT EAST ABUTMENT



FILE NAME *	USER NAME * cesrlockjd	DESIGNED -	REVISED -
ce:\p\work\p\WIDOT\CEARLOCKJD\dms07656\0598666-Hyd.dgn		DRAWN -	REVISED -
PLOT SCALE = 40.0000' / IN.		CHECKED -	REVISED -
PLOT DATE = 2/6/2009		DATE -	REVISED -

**STATE OF ILLINOIS**  
**DEPARTMENT OF TRANSPORTATION**

**JOINT REPAIR AT EAST ABUTMENT - S.N. 092-0048**

SCALE: SHEET NO. 12 OF 17 SHEETS STA. 90866 TO STA.

F.A.P. RTE.	SECTION	COUNTY	TOTAL SHEETS	SHEET NO.
697	46RS-8&1RS-2&46BDR	VERMILION	75	51
FED. ROAD DIST. NO.			ILLINOIS FED. AID PROJECT	
			CONTRACT NO. 90866	