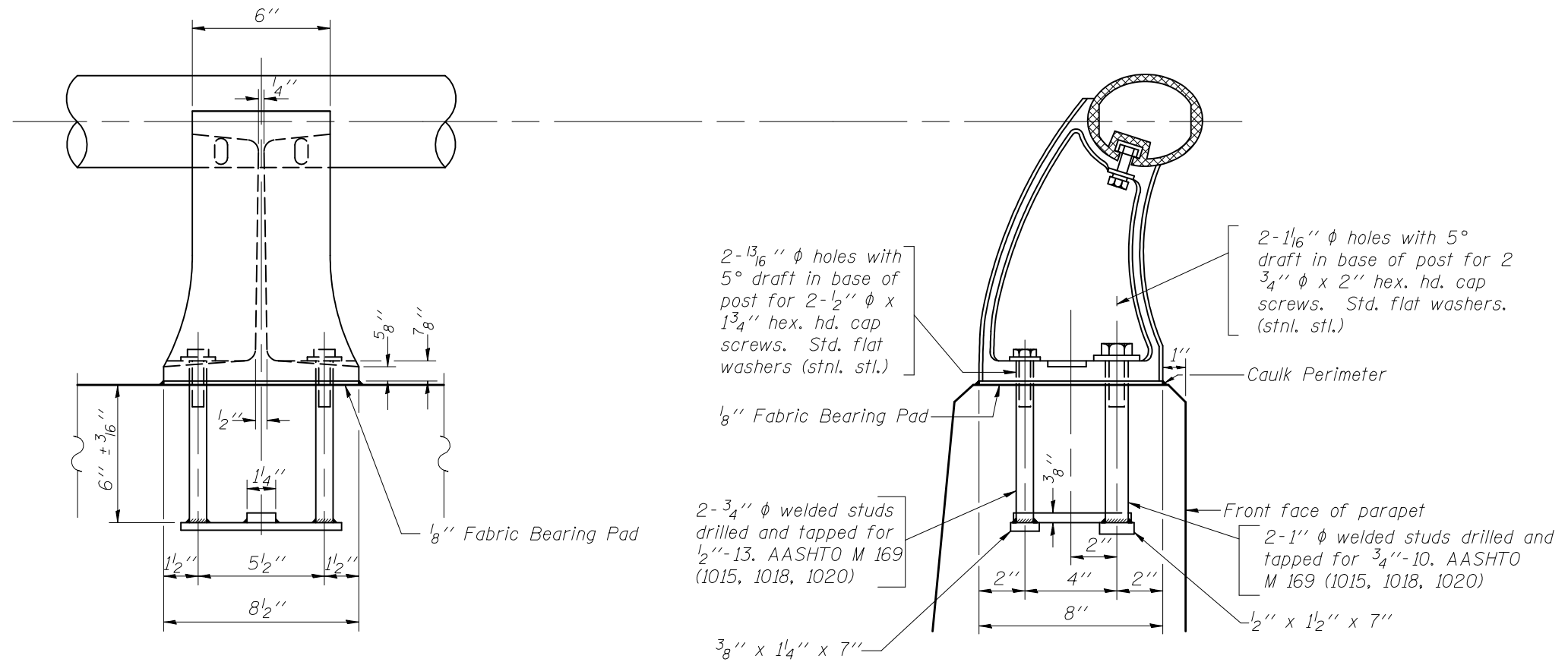


DETAIL FOR ANCHORAGE OF RAIL POST

SN 092-0048



ANCHORAGE OF RAIL POST

Note:
 Cost of rail post to be removed and
 reinstalled included with Concrete Removal.

FILE NAME =	USER NAME = ceorlockjd	DESIGNED - FROM BRIDGE CELLS	REVISED -	STATE OF ILLINOIS DEPARTMENT OF TRANSPORTATION	DETAIL FOR ANCHORAGE OF POST			F.A.P. RTE.	SECTION	COUNTY	TOTAL SHEETS	SHEET NO.
ct:\pw\work\PWIDOT\CEARLOCKJD\dms87656\0590866-Hjd.dgn		DRAWN - (BSD-1) MODIFIED	REVISED -		697	46RS-8&1RS-2&46BDR	VERMILION	75	56			
PLOT SCALE = 40.0000 ' / IN.		CHECKED -	REVISED -		CONTRACT NO. 90866			FED. ROAD DIST. NO.	ILLINOIS FED. AID PROJECT			
PLOT DATE = 2/6/2009		DATE - 12-17-08	REVISED -		SCALE: NA	SHEET NO. 17 OF 17 SHEETS	STA.	TO STA.				