

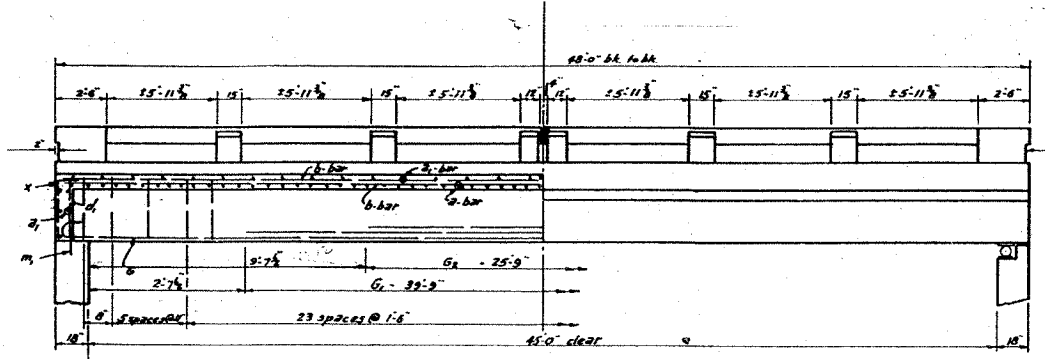
FILE NO.	SECTION	COUNTY	TOTAL SHEETS	SHEET NO.
1197	105 BR-2	WHITESIDE	59	33
STA.	TO STA.			
EXISTING CONDITIONS:				

CONTRACT 64421

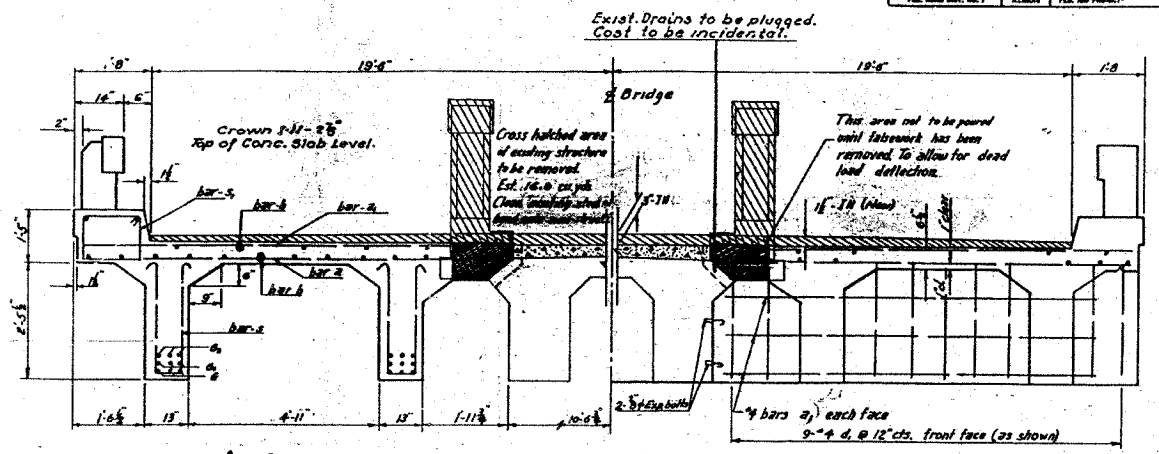
STATE OF ILLINOIS
DEPARTMENT OF PUBLIC WORKS & BUILDINGS
DIVISION OF HIGHWAYS

FOR INFORMATION ONLY

PROJECT NO.	SECTION	COUNTY	TOTAL SHEETS	SHEET NO.
S.A. 86	105 BY	Whiteside	9	7
SHEET NO. 2 3 SHEETS				

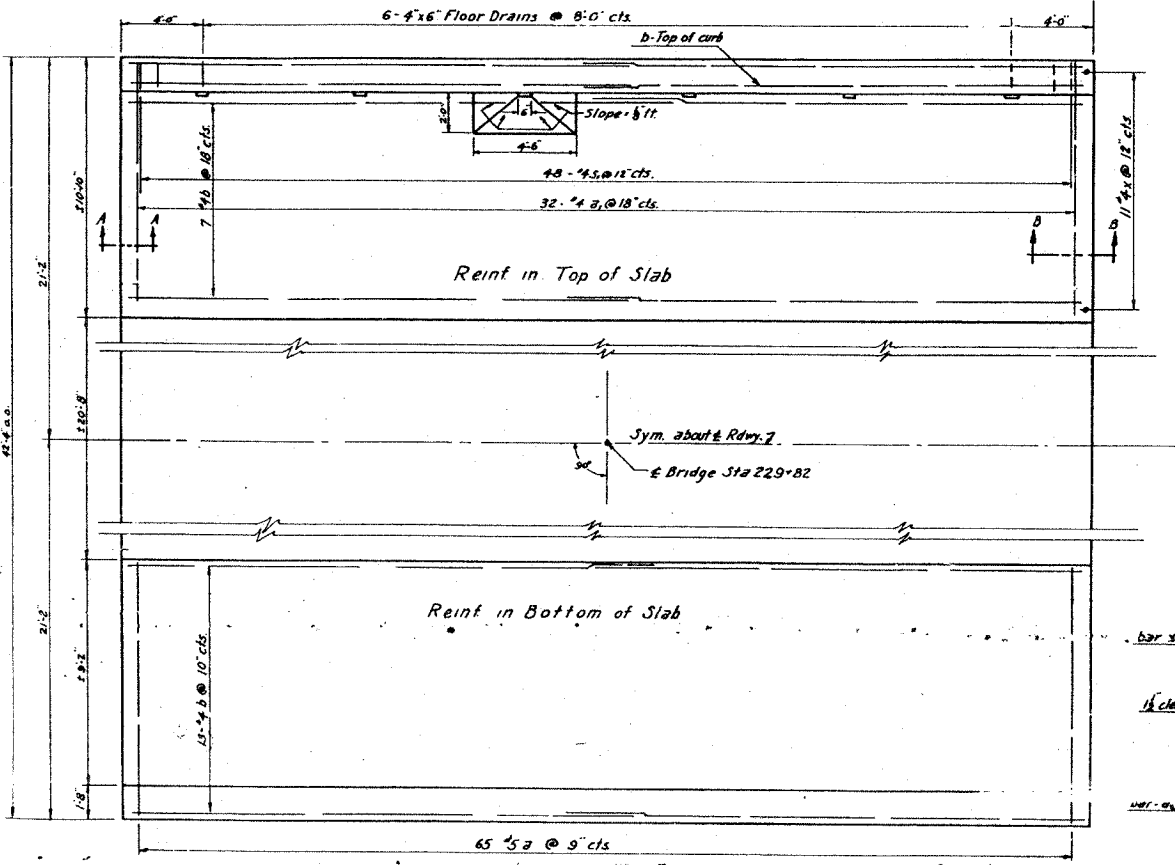


ELEVATION



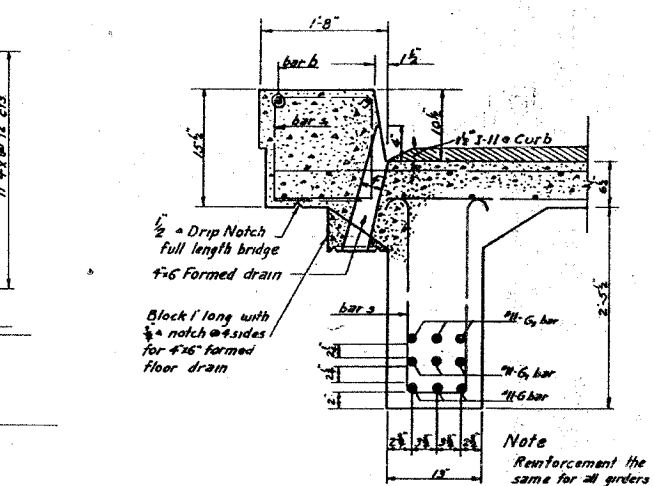
AT & SPAN

AT ABUTMENT



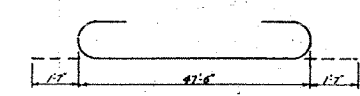
Reinf in Top of Slab

Reinf in Bottom of Slab

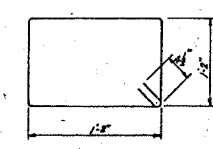


GIRDER DETAIL

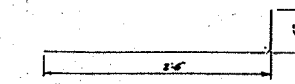
CROSS SECTION



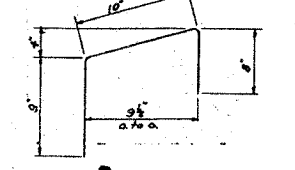
BAR G



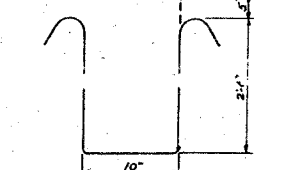
BAR S



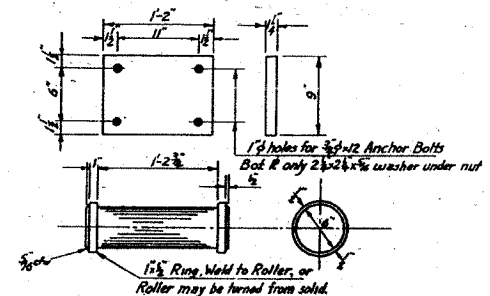
BAR D



BAR I



BAR X



ROLLER & PLATES DETAIL

BILL OF MATERIAL

Bars	No	Size	Length	Shape
a	130	5	10'-4"	—
a ₁	88	4	10'-4"	—
b	88	4	24'-6"	—
d	68	5	3'-0"	—
d ₁	36	4	2'-7"	—
G	12	11	50'-8"	—
G ₁	12	11	39'-9"	—
G ₂	12	11	25'-9"	—
r	32	4	2'-3"	—
e	18	5	23'-5"	—
x	48	4	4'-5"	—
s	136	4	4'-8"	—
s ₁	96	4	5'-5"	—

Class "X" Concrete	cu yds.	48.7
Handrail Concrete	cu yds.	2.5
Reinforcement Bars	lbs	12420
Masonry Removal	cu yds.	16.0
Expansion Bolts	each	8
Name Plate	each	One
Structural Steel	lbs	1620

DESIGNED *Edward M. Fenn*
CHECKED *Joseph J. Pender*
DRAWN *EMF* R. Rash
CHECKED *St*

EXAMINED *W.M. Romine*
PASSED *Ed. [Signature]*
APPROVED *R.R. [Signature]*
MAR 4 1955 PLAN

SECTION AA

SECTION BB

SUPERSTRUCTURE
SBI RT 86 SEC 105 BY
WHITESIDE COUNTY
STA 229 + 82