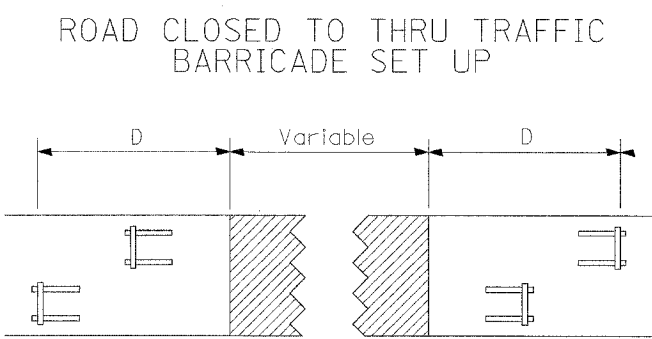
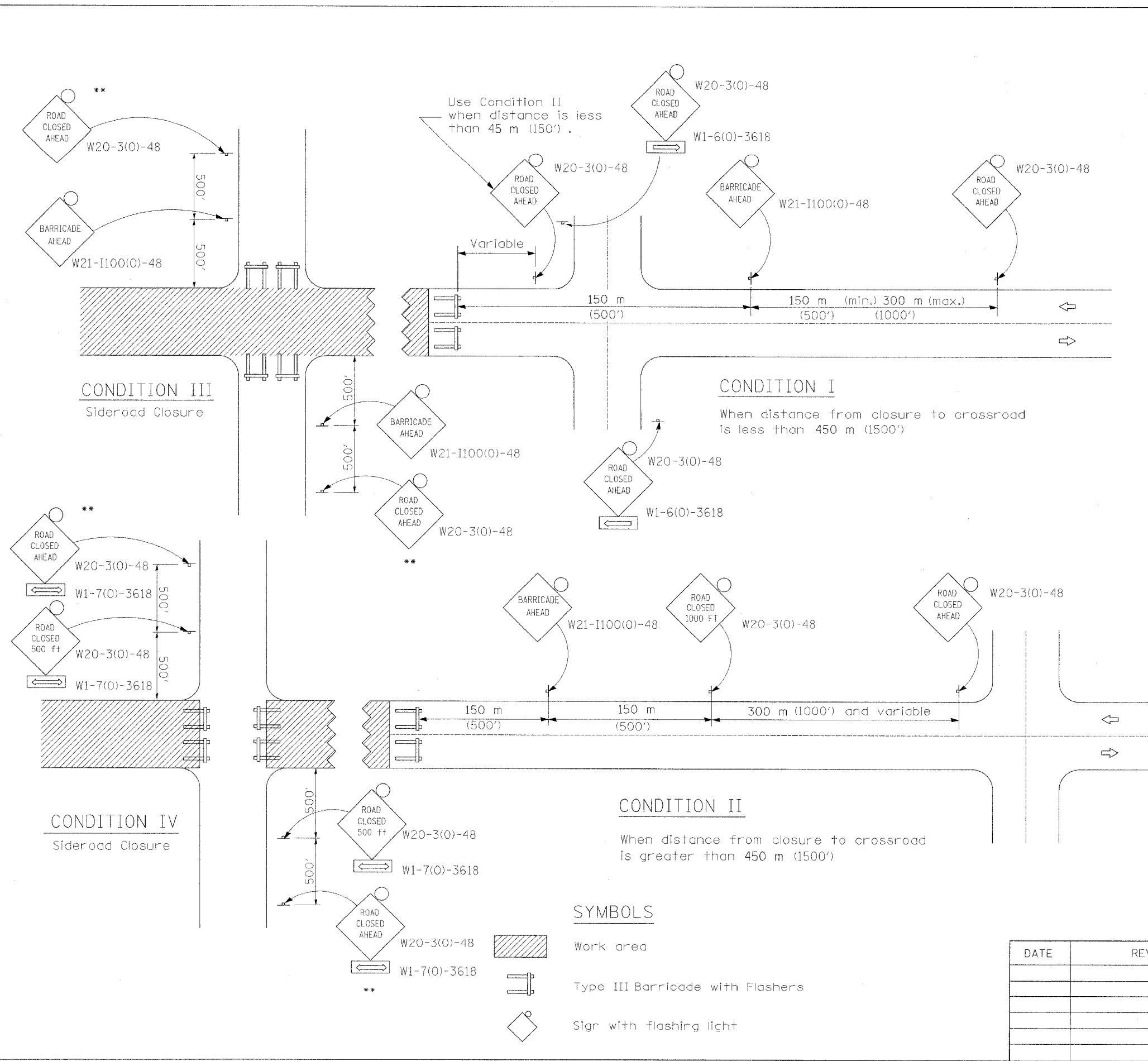


P&E NO.	SECTION	COUNTY	TOTAL SHEETS	SHEET NO.
1197	106 BR-2 & 106-T	WHITESIDE	59	38
STA.	TO STA.			
EXISTING CONDITIONS:				

64421



Type III Barricades and R11-4-4830 signs shall be as shown in "Road Closed To All Thru Traffic" detail on Highway Standard 702001. If the distance "D" exceeds 600 m (2000') an additional set of barricades and R11-4-4830 shall be placed at each end of the work area.

GENERAL NOTES

- ** Where local access is to be maintained, barricades are to be set up as shown above in Road Closed to thru traffic.
- Type III Barricades and R11-2-4830 signs shall be as shown in "Road Closed To All Traffic" detail on Highway Standard 702001.
- Longitudinal dimensions may be adjusted to fit field conditions.
- When the distance between the barricade and the intersection is between 450 m (1500') and 600 m (2000'), the advance sign shall be placed at the intersection. When the distance between the barricade and the intersection is over 600 m (2000'), an additional sign shall be placed at the intersection. The additional sign shall give the distance to the barricade in miles or fractions of a mile.
- All dimensions are in millimeters (inches) unless otherwise shown.

DATE	REVISIONS

TYPICAL APPLICATION OF TRAFFIC CONTROL DEVICES FOR ROAD CLOSURE

TRAFFIC CONTROL FOR ROAD CLOSURE