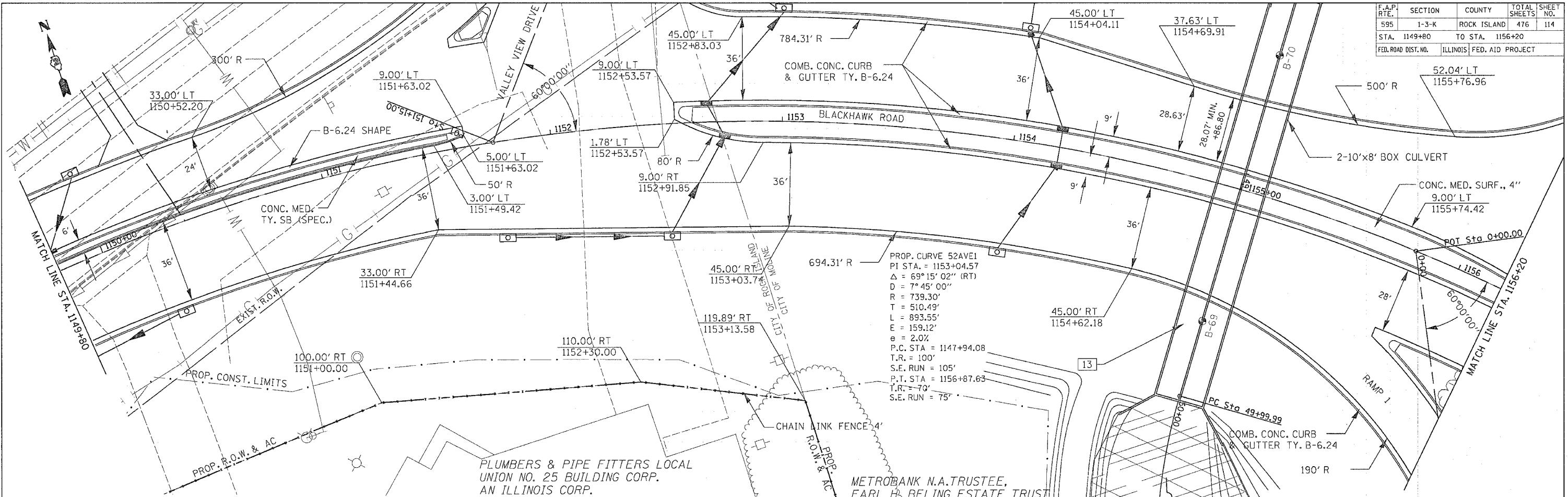
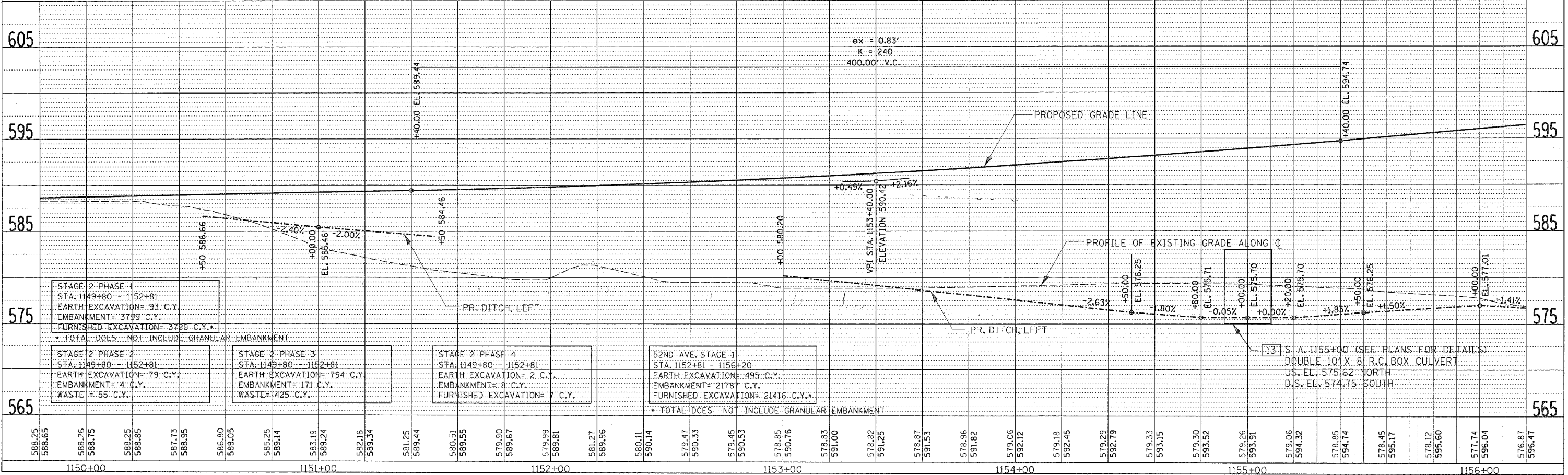


F.A.P. RTE.	SECTION	COUNTY	TOTAL SHEETS	SHEET NO.
595	1-3-K	ROCK ISLAND	476	114
STA. 1149+80		TO STA. 1156+20		
FED. ROAD DIST. NO.		ILLINOIS FED. AID PROJECT		



PLAN	SURVEYED	DATE
NOTE BOOK	GRADES CHECKED	
NO.	BY	
	DATE	

PROFILE	SURVEYED	DATE
NOTE BOOK	GRADES CHECKED	
NO.	BY	
	DATE	



STAGE 2 PHASE 1
STA. 1149+80 - 1152+81
EARTH EXCAVATION= 93 C.Y.
EMBANKMENT= 3799 C.Y.
FURNISHED EXCAVATION= 3729 C.Y.*
* TOTAL DOES NOT INCLUDE GRANULAR EMBANKMENT

STAGE 2 PHASE 2
STA. 1149+80 - 1152+81
EARTH EXCAVATION= 79 C.Y.
EMBANKMENT= 4 C.Y.
WASTE= 55 C.Y.

STAGE 2 PHASE 3
STA. 1149+80 - 1152+81
EARTH EXCAVATION= 794 C.Y.
EMBANKMENT= 171 C.Y.
WASTE= 425 C.Y.

STAGE 2 PHASE 4
STA. 1149+80 - 1152+81
EARTH EXCAVATION= 2 C.Y.
EMBANKMENT= 8 C.Y.
FURNISHED EXCAVATION= 7 C.Y.

52ND AVE. STAGE 1
STA. 1152+81 - 1156+20
EARTH EXCAVATION= 495 C.Y.
EMBANKMENT= 2178 C.Y.
FURNISHED EXCAVATION= 2146 C.Y.*
* TOTAL DOES NOT INCLUDE GRANULAR EMBANKMENT

13 STA. 1155+00 (SEE PLANS FOR DETAILS)
DOUBLE 10' X 8' R.C. BOX CULVERT
U.S. EL. 575.62 NORTH
D.S. EL. 574.75 SOUTH

BLACKHAWK ROAD - STA. 1149+80 TO STA. 1156+20