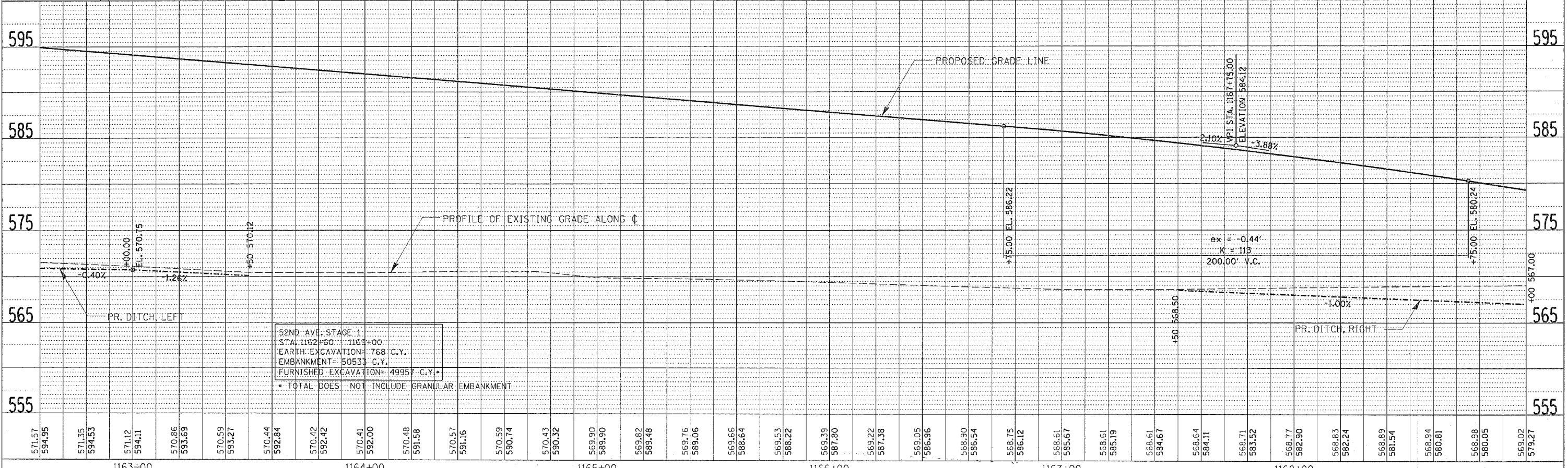
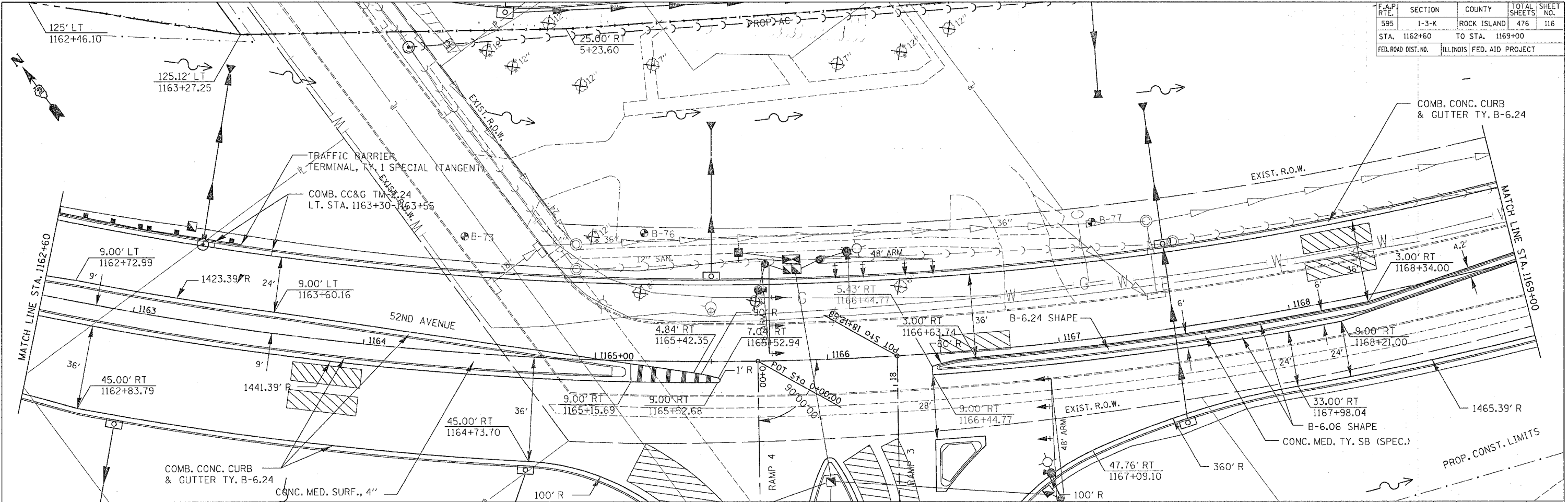


F.A.P. RTE.	SECTION	COUNTY	TOTAL SHEETS	SHEET NO.
595	1-3-K	ROCK ISLAND	476	116
STA. 1162+60		TO STA. 1169+00		
FED. ROAD DIST. NO.		ILLINOIS FED. AID PROJECT		



52ND AVE. STAGE 1
 STA. 1162+60 - 1169+00
 EARTH EXCAVATION= 768 C.Y.
 EMBANKMENT= 50533 C.Y.
 FURNISHED EXCAVATION= 49957 C.Y.
 * TOTAL DOES NOT INCLUDE GRANULAR EMBANKMENT

52ND AVENUE - STA. 1162+60 TO STA. 1169+00

PLAN	DATE
SURVEYED	BY
ALIGNED	BY
CHECKED	BY
NOTE BOOK	NO.
FILE NAME	

PROFILE	DATE
SURVEYED	BY
GRADES CHECKED	BY
NOTE BOOK	NO.
FILE NAME	