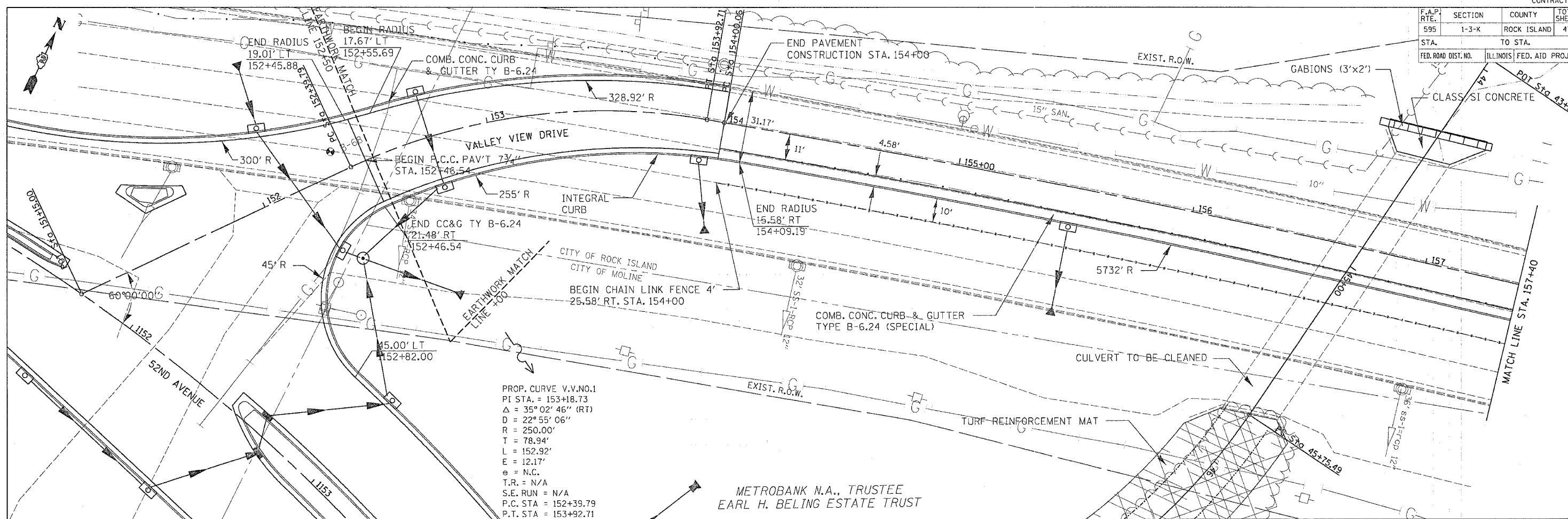


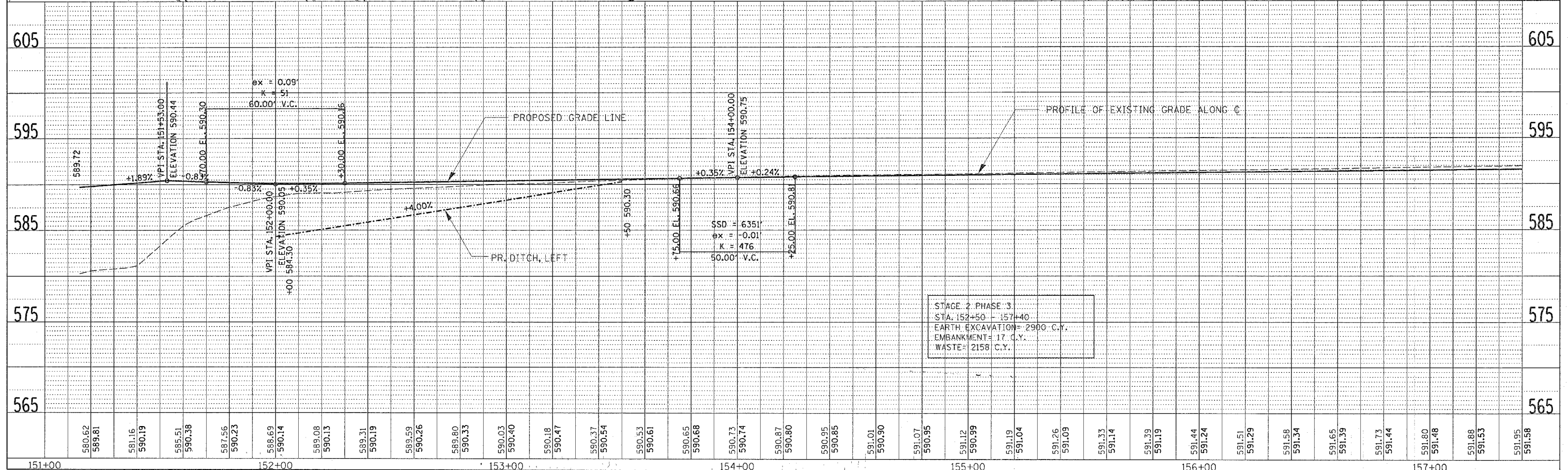
F.A.P. RTE.	SECTION	COUNTY	TOTAL SHEETS	SHEET NO.
595	1-3-K	ROCK ISLAND	476	135
STA.	TO STA.			
FED. ROAD DIST. NO.	ILLINOIS FED. AID PROJECT			



PROP. CURVE V.V.NO.1
 PI STA. = 153+18.73
 Δ = 35° 02' 46" (RT)
 D = 22° 55' 06"
 R = 250.00'
 T = 78.94'
 L = 152.92'
 E = 12.17'
 e = N.C.
 T.R. = N/A
 S.E. RUN = N/A
 P.C. STA = 152+39.79
 P.T. STA = 153+92.71

DATE	BY	REVISION
		PLAN
		NOTE BOOK
		CHECKED
		NO. 1

DATE	BY	REVISION
		PROFILE
		NOTE BOOK
		CHECKED
		NO. 1



VALLEY VIEW DRIVE - STA. 151+00 TO STA. 157+40