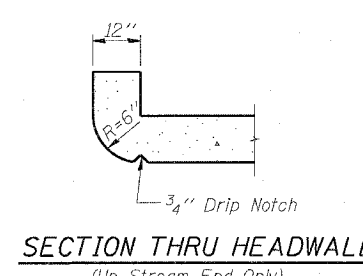
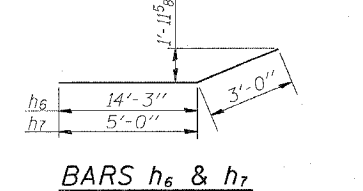
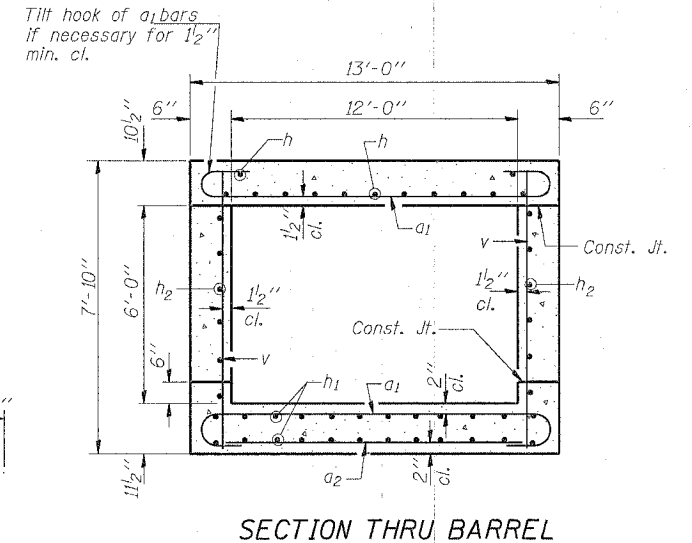
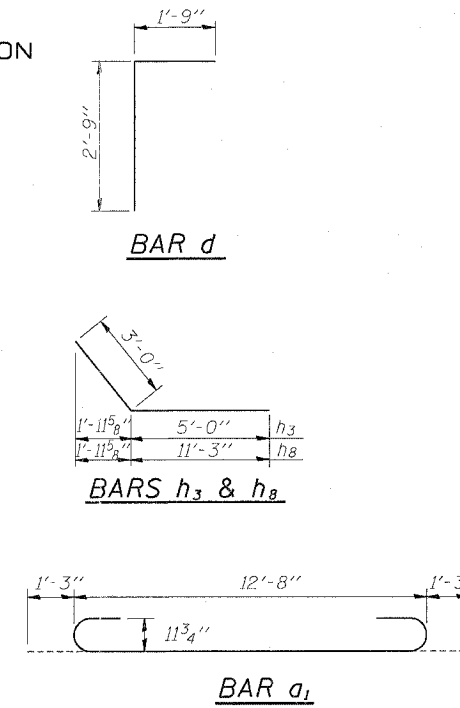
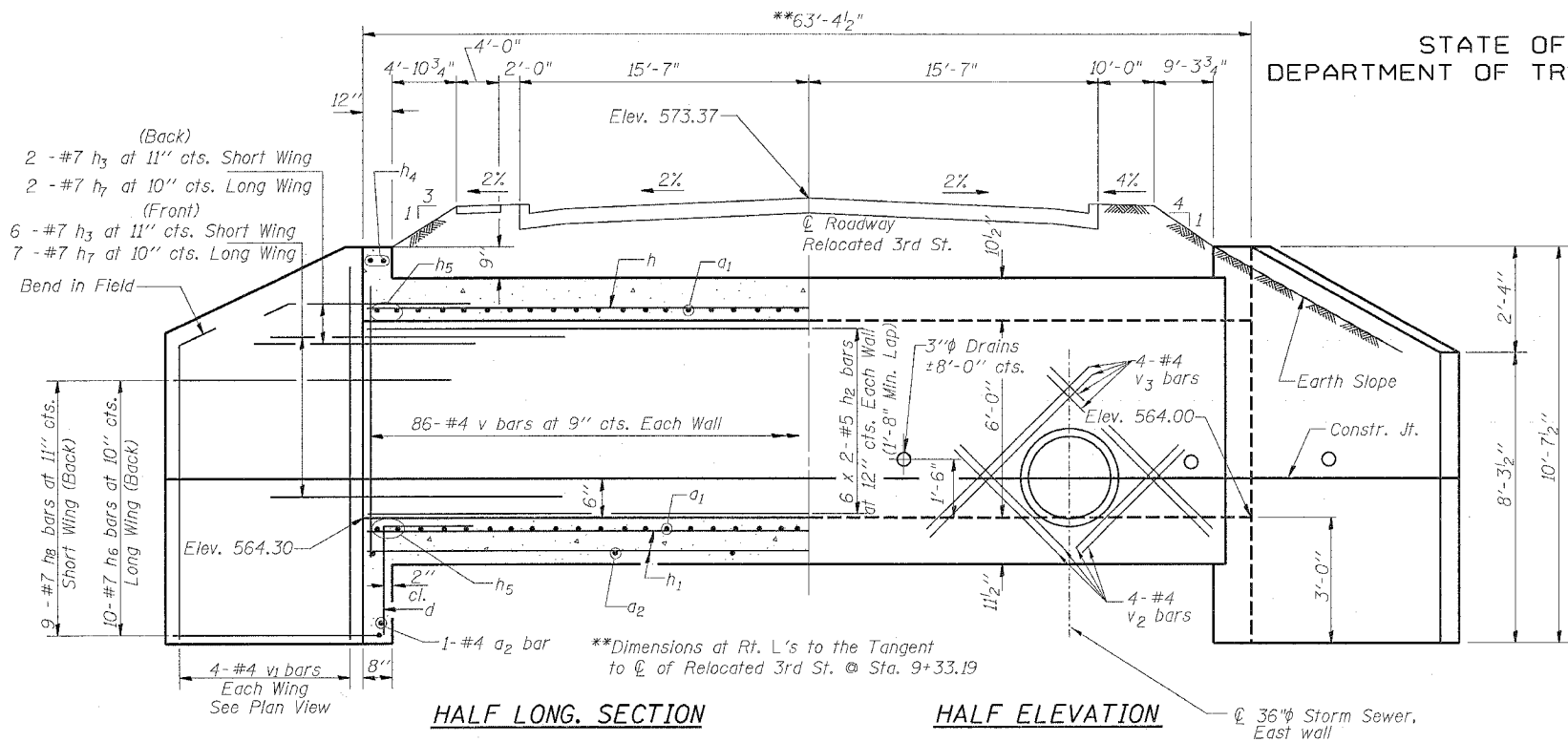


STATE OF ILLINOIS  
DEPARTMENT OF TRANSPORTATION

ROUTE NO.	SECTION	COUNTY	STATION	SHEET NO.
F.A.P. 595	1-3-K	Rock Island	476	287
PER. ROAD DIST. NO. 7		ILLINOIS	FED. AID PROJECT	

SHEET NO. 1  
1 SHEETS



BILL OF MATERIAL

Bar	No.	Size	Length	Shape
a <sub>1</sub>	204	#9	15'-2"	U
a <sub>2</sub>	34	#4	12'-6"	—
d	24	#4	4'-6"	U
h	26	#7	33'-6"	—
h <sub>1</sub>	48	#5	33'-0"	—
h <sub>2</sub>	24	#5	33'-0"	—
h <sub>3</sub>	16	#7	8'-0"	—
h <sub>4</sub>	4	#6	13'-0"	—
h <sub>5</sub>	8	#6	13'-0"	—
h <sub>6</sub>	20	#7	17'-3"	—
h <sub>7</sub>	18	#7	8'-0"	—
h <sub>8</sub>	18	#7	14'-3"	—
v	176	#4	7'-6"	—
v <sub>1</sub>	16	#4	10'-3"	—
v <sub>2</sub>	4	#4	4'-0"	—
v <sub>3</sub>	4	#4	7'-6"	—
Concrete Box Culvert's			Cu. Yd.	100.8
Reinforcement Bars			Pound	18,180

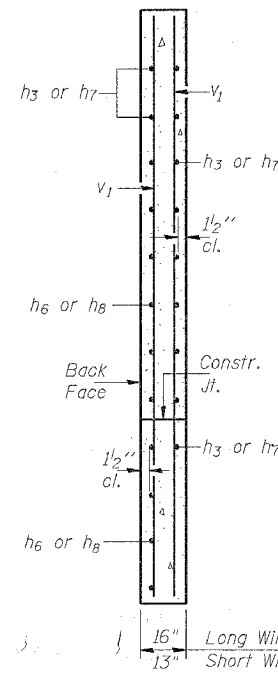
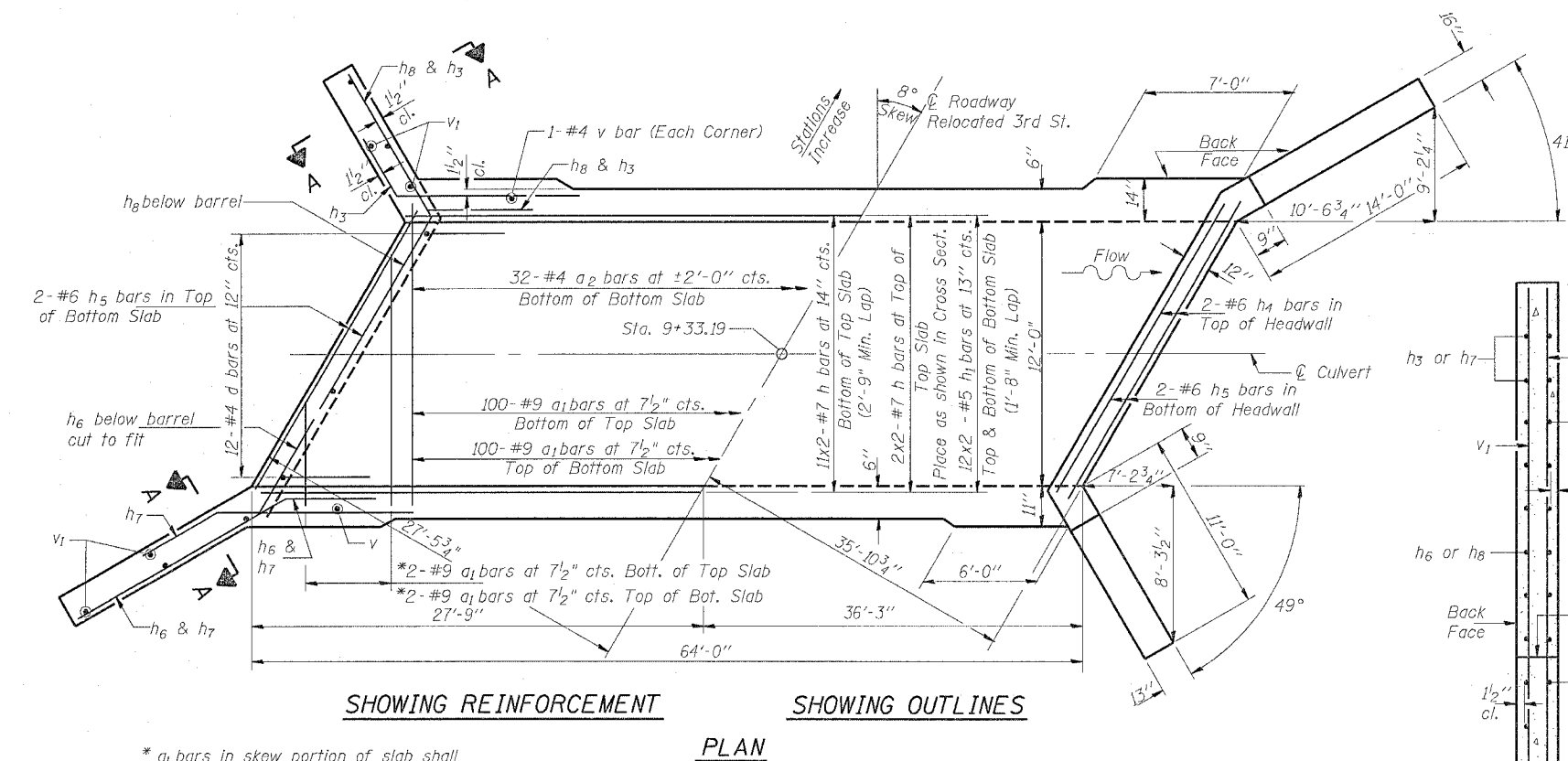
NOTES

A distance of half the length of the wingwall but not less than six feet of the barrel shall be poured monolithically with the wingwalls.  
Reinforcement Bars shall conform to the requirements of AASHTO M-31, M-42 or M-53, Grade 60.  
Bars indicated thus 12 x 4-#5 etc. indicates 12 lines of bars with 4 lengths per line.  
All construction joints shall be bonded.  
Precast culvert alternate is not allowed.

DESIGN STRESSES

f<sub>y</sub> = 60,000 psi  
f'c = 3,500 psi

LOADING HS 20-44 & ALT.



WATERWAY INFORMATION

Drainage Area = 183 Acres Low Grade Elev. 571.50 @ Sta. 1172+00

Flood	Freq. Yr.	Q C.F.S.	Opening Sq. Ft. Exist.	Nat. Prop.	H.W.E. H.W.E.	Head - Ft. Exist.	Prop.	Headwater El. Exist.	Prop.
Design	10	197	-	41.5	565.93	-	1.83	-	567.76
Base	50	282	-	52.3	566.24	-	2.42	-	568.66
Overtopping	100	314	-	56.2	566.55	-	2.61	-	568.98
Max. Calc.	500	N/A	-	-	-	-	-	-	-

DESIGNED	BDF
CHECKED	BDF
DRAWN	CLH
CHECKED	BDF

SSB-H-R 6-1-2000

Overtopping Occurs at the 50-year Storm

12'-0"x6'-0" R.C. BOX CULVERT  
RELOCATED 3RD STREET  
FA ROUTE 595 SECTION 1-3-K  
ROCK ISLAND COUNTY  
STATION 9+33.19