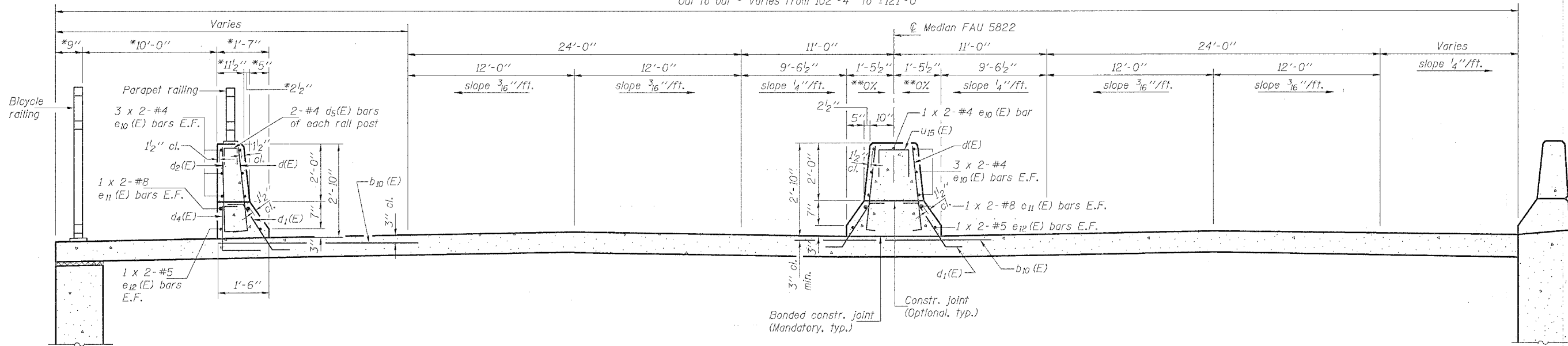


STATE OF ILLINOIS  
DEPARTMENT OF TRANSPORTATION

ROUTE NO.	SECTION	COUNTY	STATE	SHEET NO.	SHEET NO.
FAP 595	I-3-K	Rock Island	476	289B	
FED. ROAD DIST. NO. 7	ILLINOIS	FED. AID PROJECT			

Out to out - Varies from 102'-4" to ±121'-0"

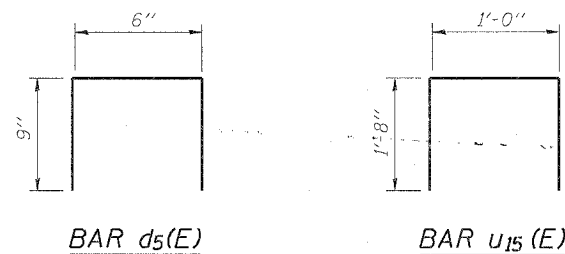
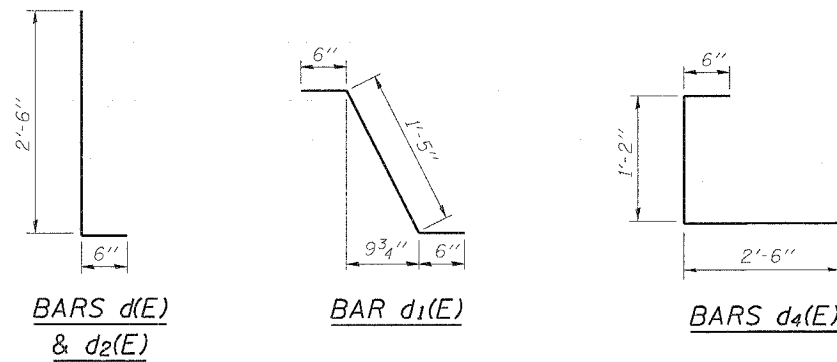


**CROSS SECTION**

Looking North  
(Dimensions are at right L's to  $\text{\textcircled{C}}$  Median except as noted.)

\* Dimensions are right L's to outside edge of approach pavement.  
\*\* Form the top of the bridge approach pavement near the median barrier to prevent ponding of water.

Notes: Reinforcement bars and concrete in the barrier shall be included in the cost of Bridge Approach Pavement (Special).  
Bars indicated thus 3 x 2-#4 etc. indicates 3 lines of bars with 2 lengths per line.



**MIN. BAR LAPS**

#4 bars = 1'-4"  
#5 bars = 1'-8"  
#8 bars = 3'-5"

**BILL OF MATERIAL**

(For information only)

Bar	No.	Size	Length	Shape
b <sub>10</sub> (E)	128	#5	7'-0"	—
d(E)	204	#5	3'-0"	┌
d <sub>1</sub> (E)	204	#5	2'-5"	┌
d <sub>2</sub> (E)	62	#4	3'-0"	┌
d <sub>4</sub> (E)	62	#4	4'-2"	┌
d <sub>5</sub> (E)	16	#4	2'-0"	┌
e <sub>10</sub> (E)	52	#4	16'-4"	—
e <sub>11</sub> (E)	16	#8	17'-4"	—
e <sub>12</sub> (E)	16	#5	16'-6"	—
u <sub>15</sub> (E)	64	#4	4'-4"	┌

DESIGNED	EXAMINED
CHECKED	PASSED
DRAWN	ENGINEER OF BRIDGE DESIGN
CHECKED	ENGINEER OF BRIDGES AND STRUCTURES