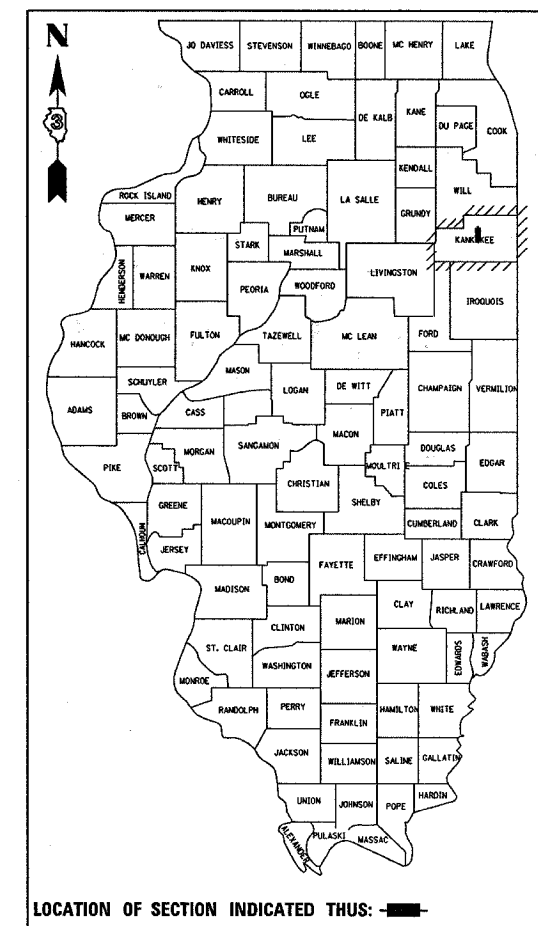


Lol131

F.A.P. RTE.	SECTION	COUNTY	TOTAL SHEETS	SHEET NO.
840 ALT	(139Z-1)	KANKAKEE	24	1
ILLINOIS PROJECT				

P-93-058-99
D-93-087-04



INDEX OF SHEETS

- 1 COVER SHEET
- 2 GENERAL NOTES
- 3 SUMMARY OF QUANTITIES
- 4 - 5 TYPICAL SECTIONS
- 6 TIE POINTS
- 7 SCHEDULES
- 8 PLAN AND PROFILE
- 9 TRAFFIC DETOUR PLAN
- 10 RIGHT OF WAY
- 11 - 18 STRUCTURE PLANS
- 19 - 21 DETAILS
- 22 - 24 CROSS SECTIONS

HIGHWAY STANDARDS

- 000001-04 STANDARD SYMBOLS, ABBREVIATIONS AND PATTERNS
- 001001 AREAS OF REINFORCEMENT BARS
- 001006 DECIMAL OF AN INCH AND OF A FOOT
- 285001-01 FABRIC FORMED CONCRETE REVETMENT MATS
- 424001-03 CURB RAMPS FOR SIDEWALK
- 515001-02 NAME PLATE FOR BRIDGES
- 542301 PRECAST REINF CONC FLARED END SECTION
- 602301 INLET, TYPE A
- 602401 MANHOLE, TYPE A
- 602601 PRECAST REINFORCED CONCRETE FLAT SLAB TOP
- 602701 CAST IRON STEPS
- 604001-02 FRAME AND LIDS, TYPE 1
- 604061-01 FRAME AND GRATE, TYPE 12
- 606001-02 CONCRETE CURB AND COMBINATION CONCRETE CURB AND GUTTER
- 664001-01 CHAIN LINK FENCE
- 701601-04 URBAN LANE CLOSURE, MULTILANE 1W OR 2W WITH NONTRAV. MEDIAN
- 701801-03 LANE CLOSURE, MULTILANE 1W OR 2W CROSSWALK OR SIDEWALK CLOSURE
- 702001-05 TRAFFIC CONTROL DEVICES
- 781001-02 TYPICAL APPLICATIONS RAISED REFLECTIVE PAVEMENT MARKERS

STATE OF ILLINOIS

DEPARTMENT OF TRANSPORTATION

DIVISION OF HIGHWAYS

PLANS FOR PROPOSED

FEDERAL AID HIGHWAY

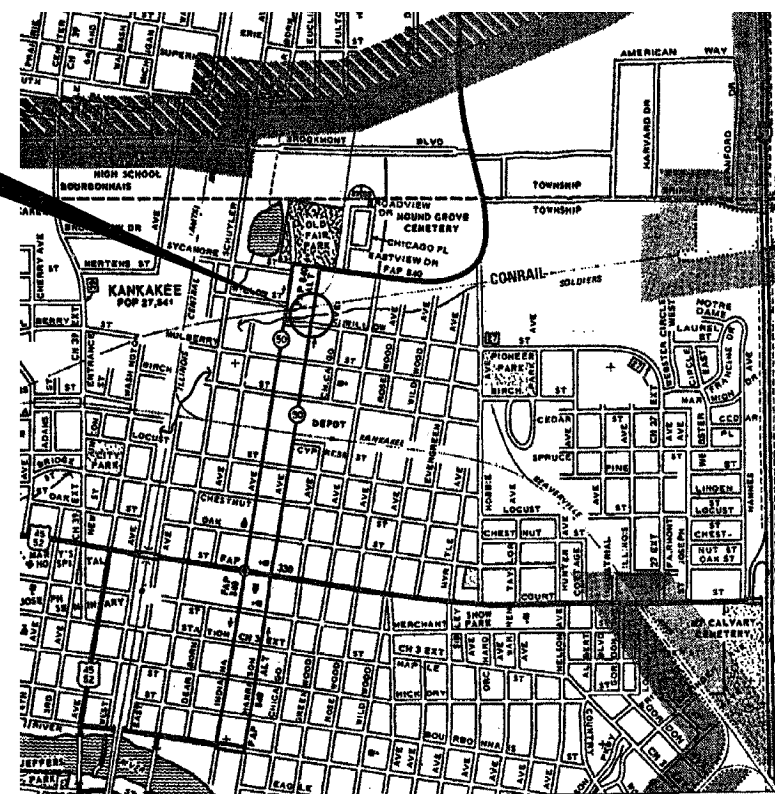
FAP ROUTE 840 ALT (IL 50)

SECTION (139Z-1)

KANKAKEE COUNTY

C - 93 - 164 - 04
CULVERT REPLACEMENT
DITCH SOUTH OF CONRAIL IN KANKAKEE

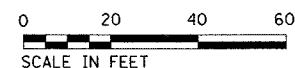
PROJECT LOCATION



LOCATION MAP

NOT TO SCALE

GROSS & NET LENGTH = 243FT. = 0.046 MI.



FULL SIZE PLANS HAVE BEEN PREPARED USING STANDARD ENGINEERING SCALES, REDUCED SIZED PLANS WILL NOT CONFORM TO STANDARD SCALES, IN MAKING MEASUREMENTS ON REDUCED PLANS, THE ABOVE SCALES MAY BE USED.

MICROFILMED _____
 REEL NUMBER _____
 AWARDED _____
 RESIDENT ENGINEER _____
 AS BUILT CHANGES WERE MADE
 ON THE FOLLOWING SHEETS _____

JULIE 1-800-892-0123

DISTRICT 3 NO. (815) 434-6131

PROJECT ENGINEER: RICK POWELL
 UNIT CHIEF: BRAD DUNCAN
 TOWNSHIP: KANKAKEE

CONTRACT NO. 66131

FUNCTION CLASSIFICATION
 OTHER PRINCIPAL ARTERIAL

2005 ADT = 4500

P.V. = 91.4% S.U. = 6.1% M.U. = 2.5%

STATE OF ILLINOIS
 DEPARTMENT OF TRANSPORTATION
 DIVISION OF HIGHWAYS

SUBMITTED August 20 2004

John P. Kow
 February 4, 2005 DISTRICT ENGINEER

Mike Hine
 February 4, 2005 ENGINEER OF DESIGN AND ENVIRONMENT

Victor Moders
 February 4, 2005 DIRECTOR, DIVISION OF HIGHWAYS

PRINTED BY THE AUTHORITY
 OF THE STATE OF ILLINOIS

66131

F. A. P. RTE.	SECTION	COUNTY	TOTAL SHEETS	SHEET NO.
840	(139Z-1)I	KANKAKEE	24	2
STA.		TO STA.		
FED. ROAD DIST. NO. -	ILLINOIS	FED. AID PROJECT		

GENERAL NOTES

THE THICKNESS OF BITUMINOUS MIXTURES SHOWN ON THE PLANS IS THE NOMINAL THICKNESS. DEVIATIONS FROM THE NOMINAL THICKNESS WILL BE PERMITTED WHEN SUCH DEVIATIONS OCCUR DUE TO IRREGULARITIES IN THE EXISTING SURFACE OR BASE ON WHICH THE BITUMINOUS MIXTURE IS PLACED.

EXCEPT AS NOTED ON THE PLANS, PAVEMENT GRADES SHOWN ARE AT THE TOP OF PAVEMENT SURFACES.

THE ENGINEER WILL BE THE SOLE JUDGE CONCERNING CURING TIME FOR THE VARIOUS BITUMINOUS LIFTS.

FOR STABILIZATION, ALL TYPE III BARRICADES SHALL REQUIRE A MINIMUM OF FOUR SAND BAGS PER BARRICADE.

ONLY THOSE TREES DESIGNATED BY THE ENGINEER OR LISTED IN THE TREE REMOVAL SCHEDULE SHALL BE REMOVED. THE CONTRACTOR SHALL PROTECT ALL REMAINING TREES FROM DAMAGE DUE TO HIS OPERATIONS.

THE FINISHED EARTHWORK SHALL HAVE A VEGETATION SUSTAINING SOIL COVERING THE TOP FOUR INCHES IN AREAS TO BE SEEDED OR SODDED. THE VEGETATION SUSTAINING SOIL REQUIRED WILL NOT BE PAID FOR SEPARATELY BUT SHALL BE INCLUDED IN THE COST OF EARTH EXCAVATION.

ALL ELEVATIONS REFERRING TO U.S.G.S. MEAN SEA LEVEL DATUM.

THE GEOTECHNICAL ENGINEER SHALL BE CONTACTED PRIOR TO UNDERCUTTING FOR PROPOSED BOX CULVERT TO VERIFY ACTUAL DEPTH REQUIRED.

ABANDONED UNDERGROUND UTILITIES THAT CONFLICT WITH CONSTRUCTION SHALL BE DISPOSED OF OUTSIDE THE LIMITS OF THE RIGHT OF WAY ACCORDING TO ARTICLE 202.03 OF THE STANDARD SPECIFICATIONS AND AS DIRECTED BY THE ENGINEER. THIS WORK WILL NOT BE PAID FOR SEPARATELY BUT SHALL BE INCLUDED IN THE COST OF EARTH EXCAVATION.

ANY REFERENCE TO A STANDARD IN THESE PLANS SHALL BE INTERPRETED TO MEAN THE EDITION AS INDICATED BY THE SUBNUMBER LISTED ON THE INDEX OF SHEETS OR THE COPY OF THE STANDARD INCLUDED IN THESE PLANS.

THE FOLLOWING RATES OF APPLICATION HAVE BEEN USED IN CALCULATING PLAN QUANTITIES:

GRANULAR MATERIALS	2.05	TONS / CU YD
BITUMINOUS MAT PRIME COAT	0.08	GAL / SQ YD OR
	0.375	GAL / SQ YD
AGGREGATE PRIME COAT	0.002	TONS / SQ YD
BITUMINOUS RESURFACING	112	LBS / SQ YD / IN
SHORT TERM PAVEMENT MARKING	10	FT /100 FT OF APPLICATION
MIX FOR CRACKS, JTS & FLGWY	0.0003	TONS / SQ YD
LEVEL BINDER (HAND METHOD)	0.0005	TONS / SQ YD
SUPPLEMENTAL WATERING	3	GAL / SQ YD / APPLICATION

THE COST OF MAKING ANY SEWER CONNECTIONS TO AN EXISTING DRAINAGE STRUCTURE OR PIPE SHALL BE INCLUDED IN THE COST OF THE NEW SEWER.

MEMBERS OF JULIE KNOWN TO BE WITHIN THE LIMITS OF THE IMPROVEMENT ARE:

- COMCAST CABLE
- NICOR GAS
- COMMONWEALTH EDISON
- SBC AMERITECH
- AQUA ILLINOIS

NON-MEMBERS OF JULIE KNOWN TO BE WITHIN THE LIMITS OF THE IMPROVEMENT ARE:

CITY OF KANKAKEE

STATE OF ILLINOIS
DEPARTMENT OF TRANSPORTATION
DISTRICT THREE

PREPARED BY: Thomas T. Sanchez
DISTRICT STUDIES & PLANS ENGINEER

DATE: AUGUST 19, 2004

EXAMINED BY: Richard Brown
DISTRICT CONSTRUCTION ENGINEER

Kenneth R. Long
DISTRICT MATERIALS ENGINEER

Bruce A. Muecke
DISTRICT OPERATIONS ENGINEER

REVISIONS	
NAME	DATE

ILLINOIS DEPARTMENT OF TRANSPORTATION
GENERAL NOTES

8/18/2004 c:\pro\sect\sep05899\cover.stn .dgn

F.A.P. R.T.C.	SECTION	COUNTY	TOTAL SHEETS	SHEET NO.
840	(1392-1)I	KANKAKEE	24	3
STA.	TO STA.			
FED. ROAD DIST. NO.	ILLINOIS	FED. AID PROJECT		

CONTRACT #66131

SUMMARY OF QUANTITIES				URBAN	
CODE NO.	ITEM	CONSTRUCTION CODE TYPE:		X028-2A	
		UNIT	TOTAL QUANTITY	EX SN 046-C802	PR SN 046-2015
20100210	TREE REMOVAL (OVER 15 UNITS DIAMETER)	UNIT	24	24	
20200100	EARTH EXCAVATION	CU YD	1075	1075	
20201200	REMOVAL AND DISPOSAL OF UNSUITABLE MATERIAL	CU YD	380	380	
20700220	POROUS GRANULAR EMBANKMENT	CU YD	703	703	
20800150	TRENCH BACKFILL	CU YD	30	30	
* 25000400	NITROGEN FERTILIZER NUTRIENT	POUND	4	4	
* 25000500	PHOSPHORUS FERTILIZER NUTRIENT	POUND	4	4	
* 25000600	POTASSIUM FERTILIZER NUTRIENT	POUND	4	4	
25001000	FABRIC FORMED CONCRETE REVETMENT MATS	SQ YD	21	21	
* 25200110	SODDING, SALT TOLERANT	SQ YD	310	310	
* 25200200	SUPPLEMENTAL WATERING	UNIT	0.9	0.9	
28100107	STONE RIPRAP, CLASS A4	SQ YD	83	83	
28200100	FILTER FABRIC FOR USE WITH RIPRAP	SQ YD	83	83	
31100300	SUB-BASE GRANULAR MATERIAL, TYPE A 4"	SQ YD	323	323	
40600100	BITUMINOUS MATERIALS (PRIME COAT)	GALLON	62	62	
40600990	TEMPORARY RAMP	SQ YD	64	64	
42300100	PORTLAND CEMENT CONCRETE DRIVEWAY PAVEMENT, 5 INCH	SQ YD	22	22	
42400100	PORTLAND CEMENT CONCRETE SIDEWALK 4 INCH	SQ FT	1417	1417	
44000006	BITUMINOUS SURFACE REMOVAL 1 1/2"	SQ YD	465	465	
44000100	PAVEMENT REMOVAL	SQ YD	311	311	
44000500	COMBINATION CURB AND GUTTER REMOVAL	FOOT	240	240	
44000600	SIDEWALK REMOVAL	SQ FT	1417	1417	
50100100	REMOVAL OF EXISTING STRUCTURES	EACH	1	1	
51500100	NAME PLATES	EACH	1	1	
54001001	BOX CULVERT END SECTION, CULVERT NO. 1	EACH	1	1	
54020909	PRECAST CONCRETE BOX CULVERT 9' X 9' (M273)	FOOT	120	120	
54213669	PRECAST REINFORCED CONCRETE FLARED END SECTIONS 24"	EACH	1	1	
550A0050	STORM SEWERS, CLASS A, TYPE 1 18"	FOOT	4	4	
550A0410	STORM SEWERS, CLASS A, TYPE 2 24"	FOOT	44	44	
55100300	STORM SEWER REMOVAL 8"	FOOT	33	33	
55100700	STORM SEWER REMOVAL 15"	FOOT	3	3	
55101200	STORM SEWER REMOVAL 24"	FOOT	54	54	
60221100	MANHOLES, TYPE A, 5'-DIAMETER, TYPE 1 FRAME, CLOSED LID	EACH	1	1	
60222100	MANHOLES, TYPE A, 5'-DIAMETER, TYPE 12 FRAME AND GRATE	EACH	1	1	
60236900	INLETS, TYPE A, TYPE 12 FRAME AND GRATE	EACH	1	1	
60500060	REMOVING INLETS	EACH	2	2	
60609200	COMBINATION CONCRETE CURB AND GUTTER, TYPE M-6.12	FOOT	240	240	

SUMMARY OF QUANTITIES				URBAN	
CODE NO.	ITEM	UNIT	TOTAL QUANTITY	X028-2A	
				EX SN 046-C802	PR SN 046-2015
66400405	CHAIN LINK FENCE, 7'	FOOT	41	41	
66410300	CHAIN LINK FENCE REMOVAL	FOOT	41	41	
66900200	NON-SPECIAL WASTE DISPOSAL	CU YD	378	378	
66900450	SPECIAL WASTE PLANS AND REPORT	L SUM	1	1	
66900530	SOIL DISPOSAL ANALYSIS	EACH	2	2	
67000400	ENGINEER'S FIELD OFFICE, TYPE A	CAL MO	3	3	
67100100	MOBILIZATION	L SUM	1	1	
70102630	TRAFFIC CONTROL AND PROTECTION, STANDARD 701601	L SUM	1	1	
70102640	TRAFFIC CONTROL AND PROTECTION, STANDARD 701801	L SUM	1	1	
70103815	TRAFFIC CONTROL SURVEILLANCE	CAL DA	10	10	
70300100	SHORT-TERM PAVEMENT MARKING	FOOT	50	50	
70301000	WORK ZONE PAVEMENT MARKING REMOVAL	SQ FT	17	17	
* 78000100	THERMOPLASTIC PAVEMENT MARKING - LETTERS AND SYMBOLS	SQ FT	122.4	122.4	
* 78000400	THERMOPLASTIC PAVEMENT MARKING - LINE 6"	FOOT	60	60	
* 78000650	THERMOPLASTIC PAVEMENT MARKING - LINE 24"	FOOT	56	56	
* 78100100	RAISED REFLECTIVE PAVEMENT MARKER	EACH	4	4	
78300200	RAISED REFLECTIVE PAVEMENT MARKER REMOVAL	EACH	2	2	
X3550600	BITUMINOUS BASE COURSE SUPERPAVE 9"	SQ YD	311	311	
X4066416	BITUMINOUS CONCRETE SURFACE COURSE, SUPERPAVE, MIX "C", N70	TON	66	66	
X4066770	LEVELING BINDER (MACHINE METHOD), SUPERPAVE N70	TON	13	13	
X4400220	CURB REMOVAL AND REPLACEMENT	FOOT	24	24	
X5400403	BOX CULVERT END SECTION, SPECIAL, CULVERT NO. 1	EACH	1	1	
XX003008	TRAFFIC CONTROL DETOUR	L SUM	1	1	
Z0003900	BICYCLE RAILING	FOOT	102	102	
Z0005400	BREAKER RUN CRUSHED STONE	TON	779	779	
Z0048665	RAILROAD PROTECTIVE LIABILITY INSURANCE	L SUM	1	1	

* SPECIALTY ITEMS

REVISIONS	
NAME	DATE

ILLINOIS DEPARTMENT OF TRANSPORTATION

SUMMARY OF QUANTITIES

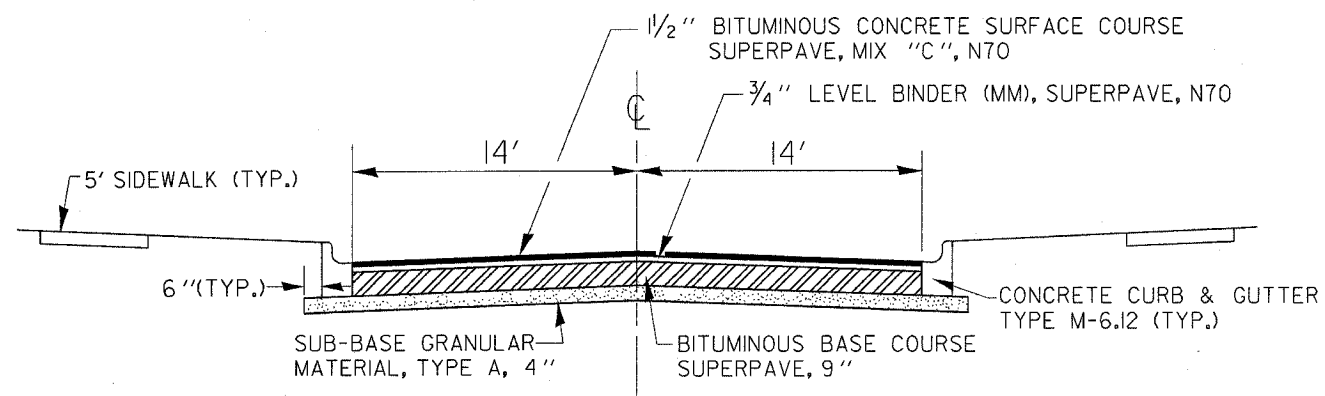
SCALE: VERT. _____
 HORIZ. _____
 DATE _____

DRAWN BY _____
 CHECKED BY _____

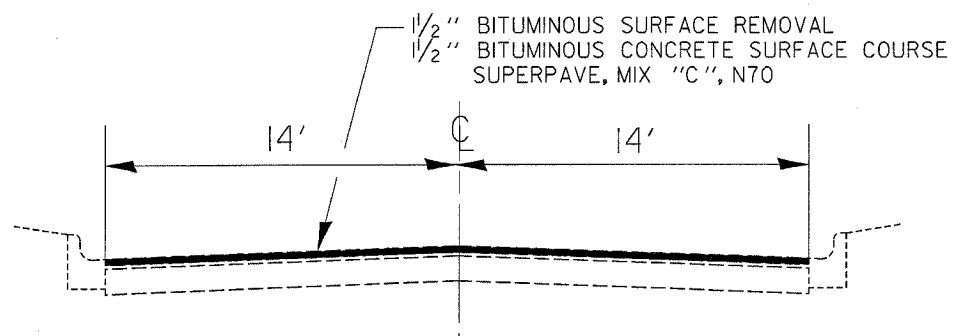
August 18, 2004 / ep05899/SUMQUANT.DGN

F.A.P. RTE.	SECTION	COUNTY	TOTAL SHEETS	SHEET NO.
840	(139Z-1)I	KANKAKEE	24	4
STA.		TO STA.		
FED. ROAD DIST. NO.	ILLINOIS	FED. AID PROJECT		

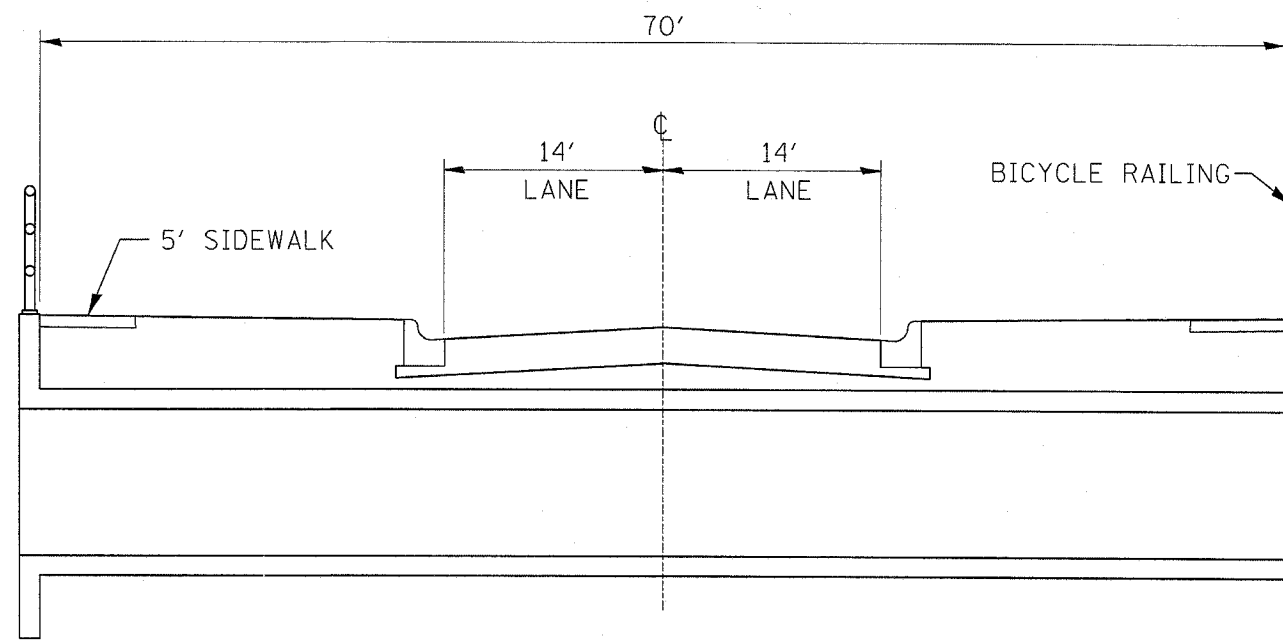
CONTRACT# 66131



PROPOSED TYPICAL ROADWAY SECTION
PAVEMENT REPLACEMENT



TYPICAL PROPOSED APPROACH
ROADWAY SECTION



PROPOSED CULVERT CROSS SECTION

June 11, 2004
ep05899/sheets.dgn

REVISIONS	
NAME	DATE

ILLINOIS DEPARTMENT OF TRANSPORTATION

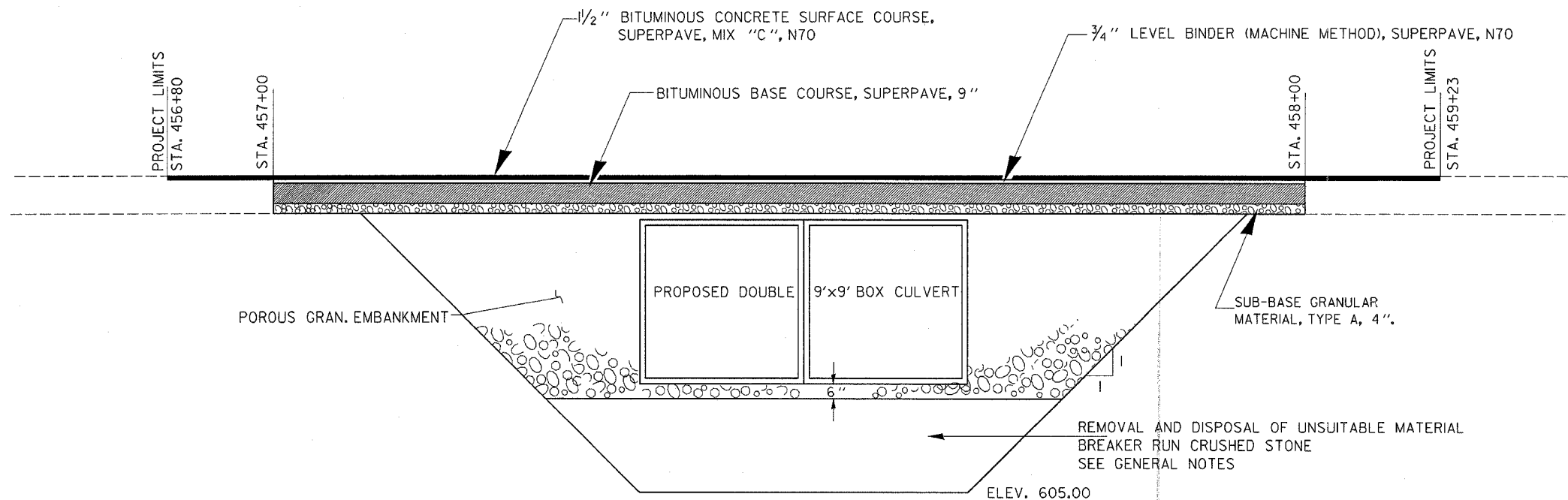
TYPICAL SECTIONS

SCALE: VERT.
HORIZ.
DATE

DRAWN BY
CHECKED BY

F.A.P. RTE.	SECTION	COUNTY	TOTAL SHEETS	SHEET NO.
840	(139Z-1)I	KANKAKEE	24	5
STA.		TO STA.		
FED. ROAD DIST. NO.		ILLINOIS FED. AID PROJECT		

CONTRACT# 66131



SECTION AT CULVERT

MIXTURES TABLE			
	SUPERPAVE SURFACE	SUPERPAVE LEVEL BINDER	SUPERPAVE BINDER FOR BASE COURSE
PG GRADE	PG 64-22	PG 64-22	PG 64-22
MAX % RAP ALLOWABLE**	10%	15%	25%
DESIGN AIR VOIDS	4.0% @ N70	4.0% @ N70	4.0% @ N50
MIXTURE COMPOSITION	IL 12.5 OR IL 9.5	IL 9.5	IL 19.0
FRICTION AGGREGATE	MIXTURE C		
PLANT LIMITS	CLASS I	CLASS I	CLASS I
DENSITY CONTROL	CORES		*

- * MATERIAL SHALL BE COMPACTED TO 93-97 PERCENT OF THE MAXIMUM THEORETICAL DENSITY, EXCEPT THAT THE BOTTOM LIFT SHALL BE COMPACTED TO A MINIMUM OF 90.0 PERCENT. THE MAXIMUM THEORETICAL DENSITY SHALL BE DETERMINED FROM THE MOVING AVERAGE AS SPECIFIED IN THE QC/QA SPECIFICATION.
- ** IF RAP OPTION IS SELECTED, THE ASPHALT CEMENT GRADE MAY NEED ADJUSTED. THIS WILL BE DETERMINED BY THE ENGINEER.

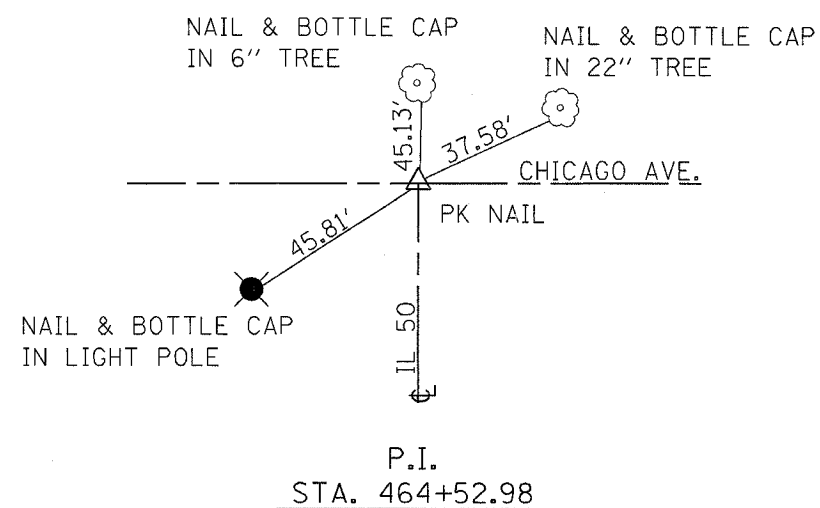
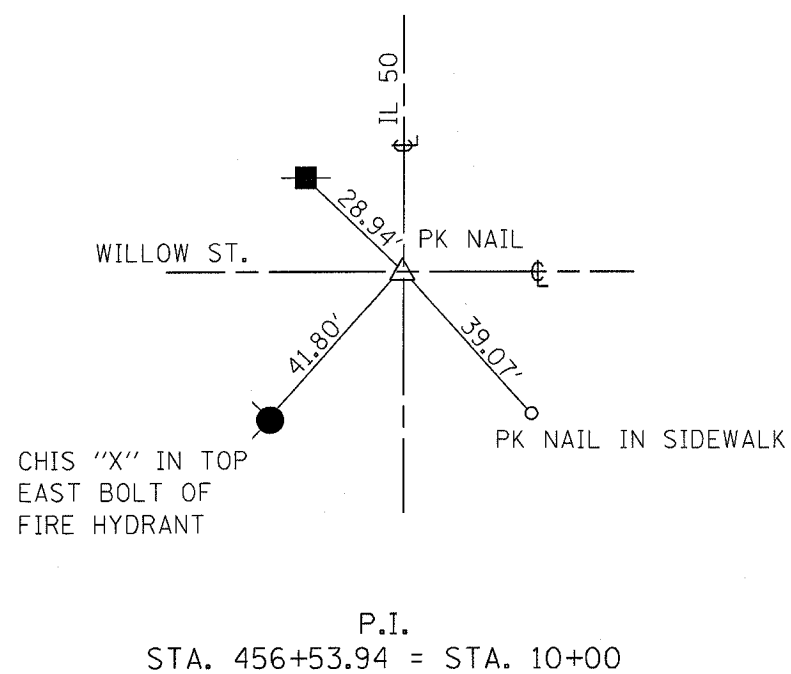
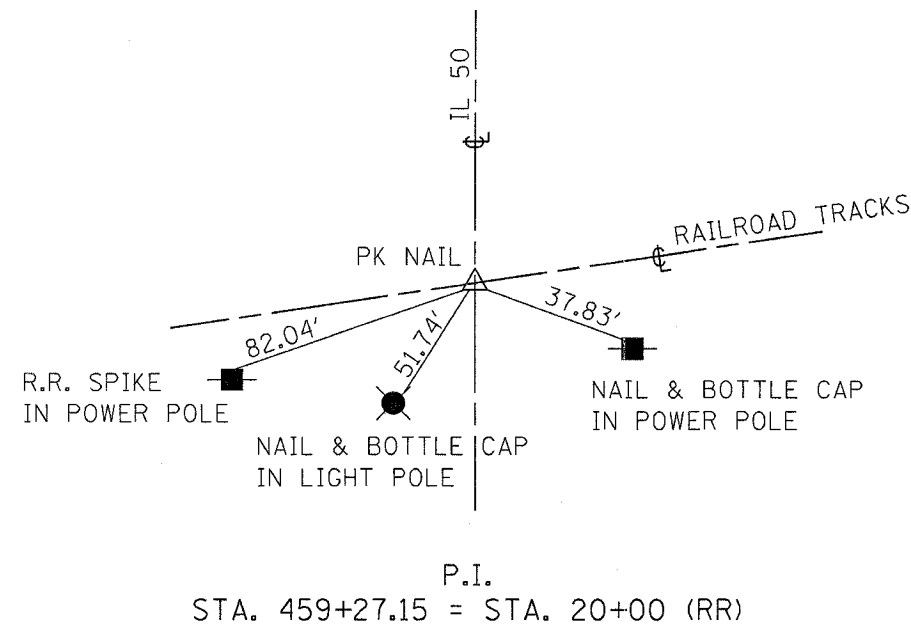
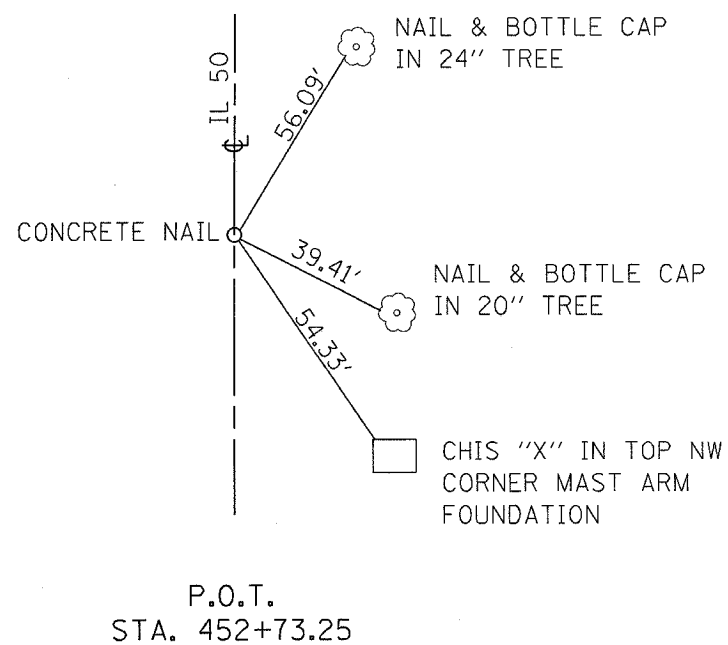
REVISIONS		ILLINOIS DEPARTMENT OF TRANSPORTATION	
NAME	DATE		

TYPICAL SECTIONS

SCALE: VERT. DATE HORIZ. DRAWN BY CHECKED BY

F.A.P. RTE.	SECTION	COUNTY	TOTAL SHEETS	SHEET NO.
840	(139Z-1)I	KANKAKEE	24	6
STA.	TO STA.			
FED. ROAD DIST. NO.	ILLINOIS	FED. AID PROJECT		

CONTRACT# 66131



REVISIONS	
NAME	DATE

ILLINOIS DEPARTMENT OF TRANSPORTATION

TIE POINTS

SCALE: VERT.
HORIZ.
DATE

DRAWN BY
CHECKED BY

June 9, 2004
ep05899/sheets.dgn

F.A.P. NO.	SECTION	COUNTY	TOTAL SHEETS	SHEET NO.
840	(1392-1)I	KANKAKEE	24	7
STA.		TO STA.		
FED. ROAD DIST. NO.		ILLINOIS	FED. AID PROJECT	

CONTRACT# 66131

MAINLINE							
LOCATION	BIT SURF	SUB GRAN	BIT BSE CSE	BIT MAT	LEVEL BIND	BIT CONC SURF CS	TEMP
	REM 1 1/2"	MAT, TY A, 4	SUPER, 9"	PRIME COAT	(MM), SUPER, N70	SUPER, MIX "C", N70	RAMP
	SQ YD	SQ YD	SQ YD	GALLON	TON	TON	SQ YD
STA. 456+80 TO STA. 457+0	63			5		6	32
STA. 457+00 TO STA. 458+00		323	311	25	13	26	
STA. 458+00 TO STA. 459+2	402			32		34	32
TOTALS	465	323	311	62	13	66	64

EARTHWORK SCHEDULE					
LOCATION		1	2	3	4
	REM & DISP OF UNSUITABLE MATERIAL	EARTH EXCAVATION	EARTH EXCAVATION ADJUSTED FOR SHRINKAGE	EMBANKMENT	EARTH WORK BALANCE (+) OR SHORTAGE (-)
	CU YD	CU YD	CU YD	CU YD	CU YD
STA. 456+80 TO STA. 458+00		7	5	78	-73
EXCAVATION FOR STRUCTURE & POR GRAN EMB		1068	1068	0	1068
UNDERCUTTING	380				
TOTAL	380	1075	1073	78	995

SF= SHRINKAGE FACTOR= 25%
COLUMN 2= COLUMN 1*(1-SF)
COLUMN 4= COLUMN 2-COLUMN 3

PAVEMENT MARKING			
LOCATION	THERMOPLASTIC		
	LETTERS & SYMBOLS	LINE 6"	LINE 24"
	WHITE SQ FT	WHITE FOOT	WHITE FOOT
STA. 456+80 TO 459+23			
CENTERLINE		60	
RAILROAD "R"	14.4		
RAILROAD "X"	108		
BARS			56
TOTALS	122.4	60	56

REVISIONS	
NAME	DATE

ILLINOIS DEPARTMENT OF TRANSPORTATION

SCHEDULES

SCALE: VERT. _____
HORIZ. _____

DATE _____

DRAWN BY _____
CHECKED BY _____

BENCHMARK:
RAILROAD SPIKE IN POWER POLE
STA. 458+88.4, 72.2' LT
ELEVATION = 627.54

STA. 457+20.7, 40.9' LT
PRC FLARED END SECTION 24"
E = 615.5

STA. 457+10, 16' LT
MANHOLE, TY A, 5' DIA., TY 12 FR & GR FLAT TOP
RIM ELEV = 662.13
E W = 616.00
E E = 616.10

STA. 457+04.5, 11' RT
MANHOLE, TY A, 5' DIA., TY 1 FR, CL FLAT TOP
RIM ELEV = 662.16
E W = 616.60
E S (EX) = 617.44 (EST.)
E N = 618.90

STA. 457+10, 14' RT
INLET, TY A, TY 12 FR & GR
RIM ELEV = 622.13
E = 619.05

F.A.P. RTE.	SECTION	COUNTY	TOTAL SHEETS	SHEET NO.
840	(139Z-1)I	KANKAKEE	24	8
STA. 454+00		TO STA. 460+00		
FED. ROAD DIST. NO.	ILLINOIS	FED. AID PROJECT		

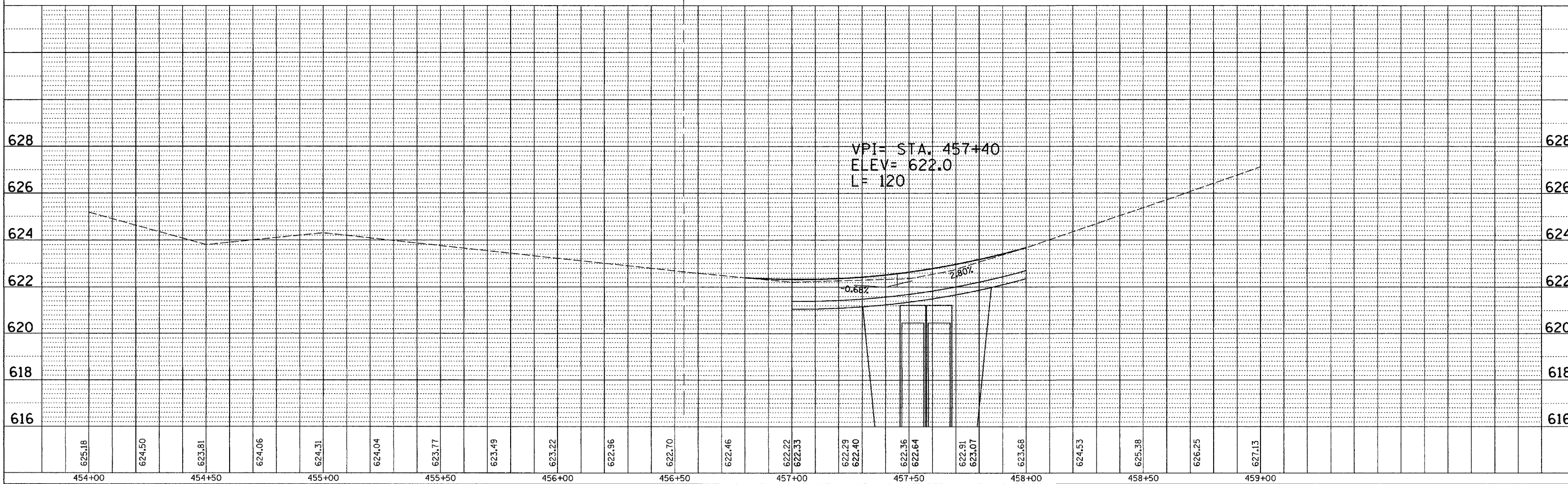
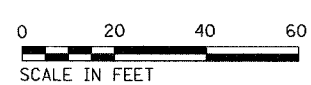
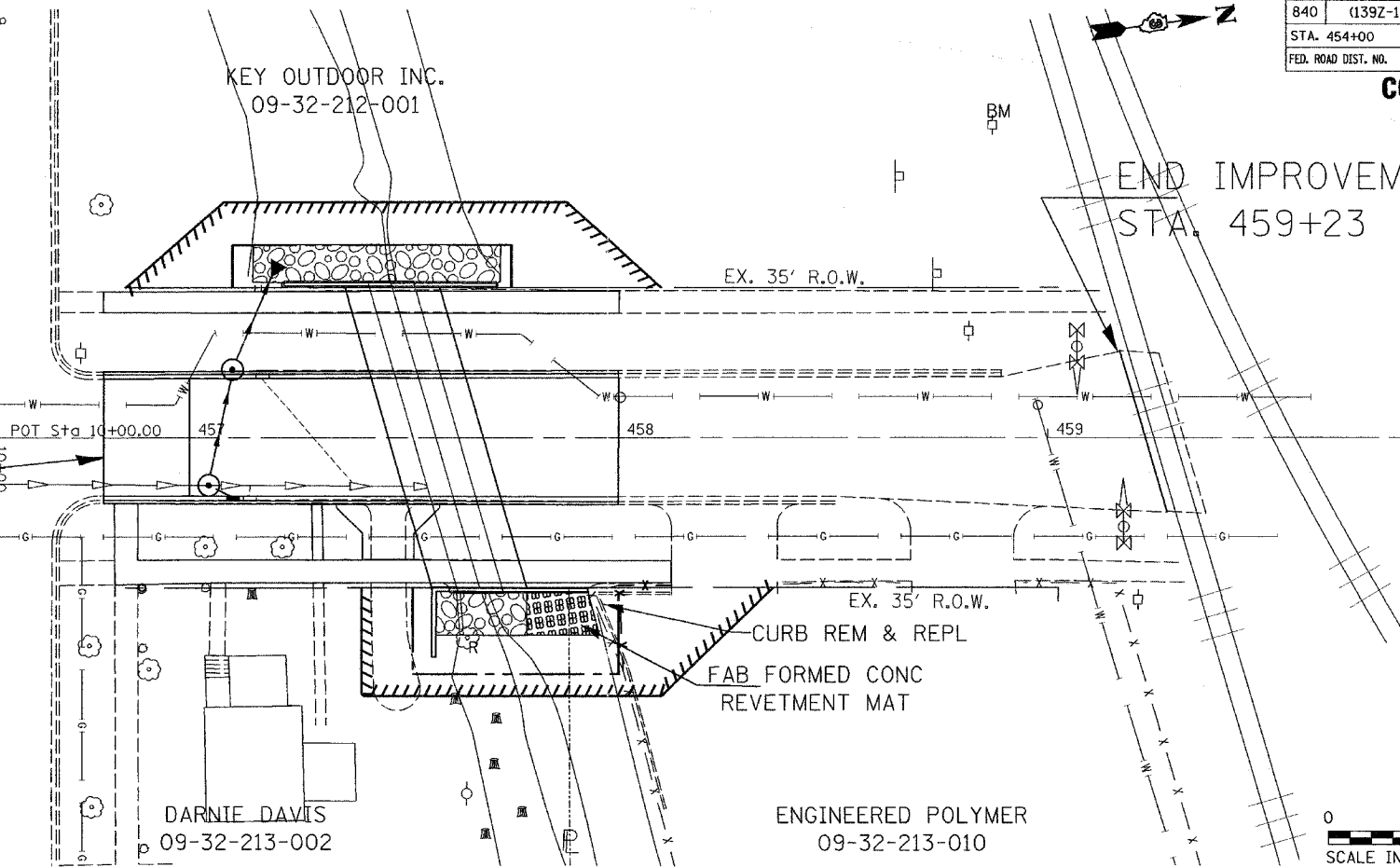
CONTRACT# 66131

MATCHLINE STA. 454 + 00

MATCHLINE STA. 460 + 00

END IMPROVEMENT
STA. 459+23

BEGIN IMPROVEMENT
STA. 456+80



PLAN	SURVEYED	PLOTTED	CHECKED	DATE

PROFILE	SURVEYED	PLOTTED	CHECKED	DATE

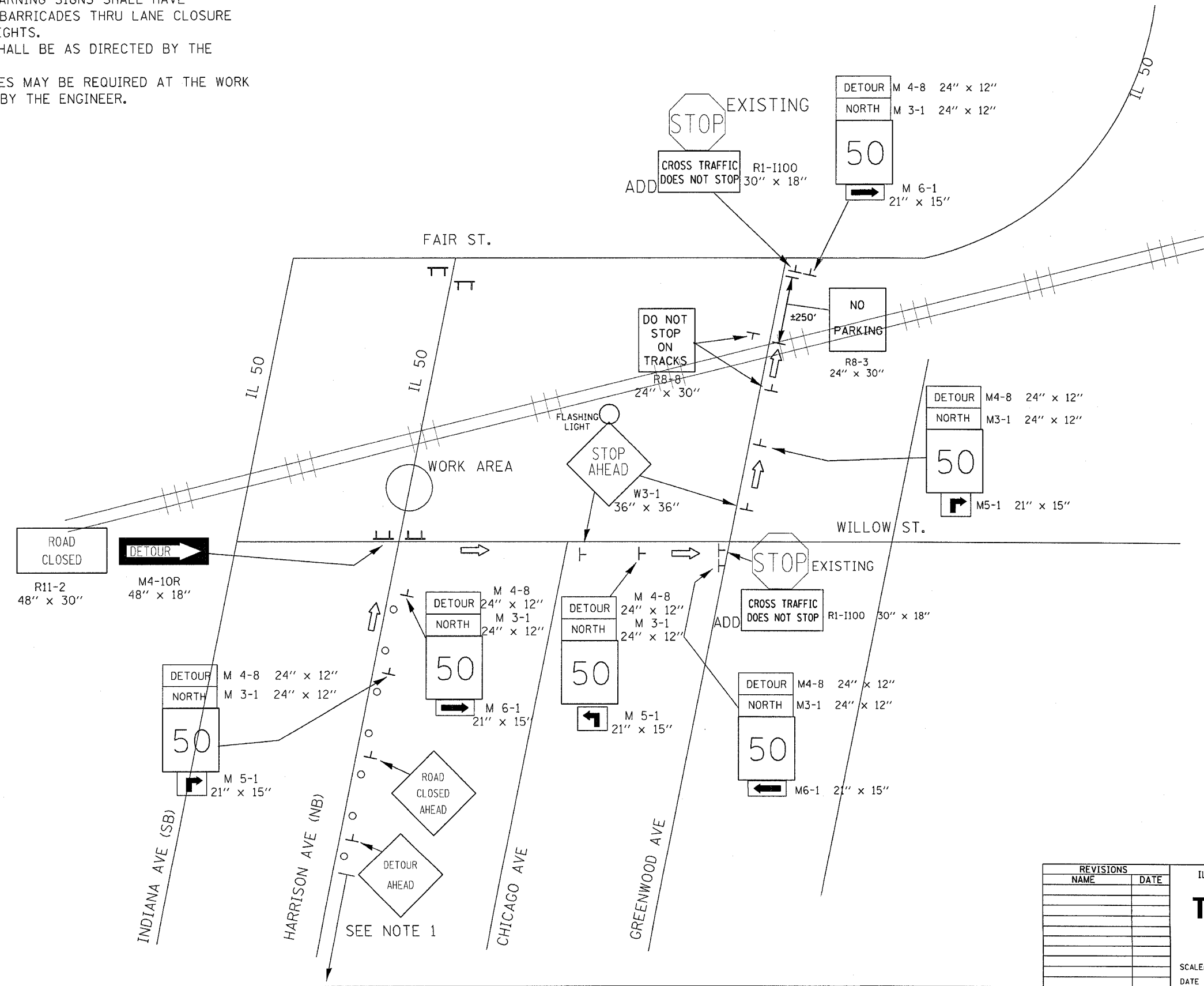
June 18, 2004
ep05999/sheets.dgn

DETOUR NOTES

1. MOVE TRAFFIC INTO LEFT LANE WITH A RIGHT LANE CLOSURE USING HIGHWAY STANDARD 701601. THE W21-I110-48 SIGNS MAY BE OMITTED. ADVANCED WARNING SIGNS SHALL HAVE FLASHING LIGHTS. ALL DRUMS/BARRICADES THRU LANE CLOSURE SHALL HAVE STEADY BURNING LIGHTS.
2. SIGN LOCATION AND SPACING SHALL BE AS DIRECTED BY THE ENGINEER.
3. ADDITIONAL TYPE III BARRICADES MAY BE REQUIRED AT THE WORK AREA LOCATION. AS DIRECTED BY THE ENGINEER.

F.A.P. RTE.	SECTION	COUNTY	TOTAL SHEETS	SHEET NO.
840	(139Z-1)I	KANKAKEE	24	9
STA.	TO STA.			
FED. ROAD DIST. NO.	ILLINOIS	FED. AID PROJECT		

CONTRACT# 66131



August 16, 2004
ep05889/sheets.dgn

REVISIONS	
NAME	DATE

ILLINOIS DEPARTMENT OF TRANSPORTATION

TRAFFIC DETOUR PLAN

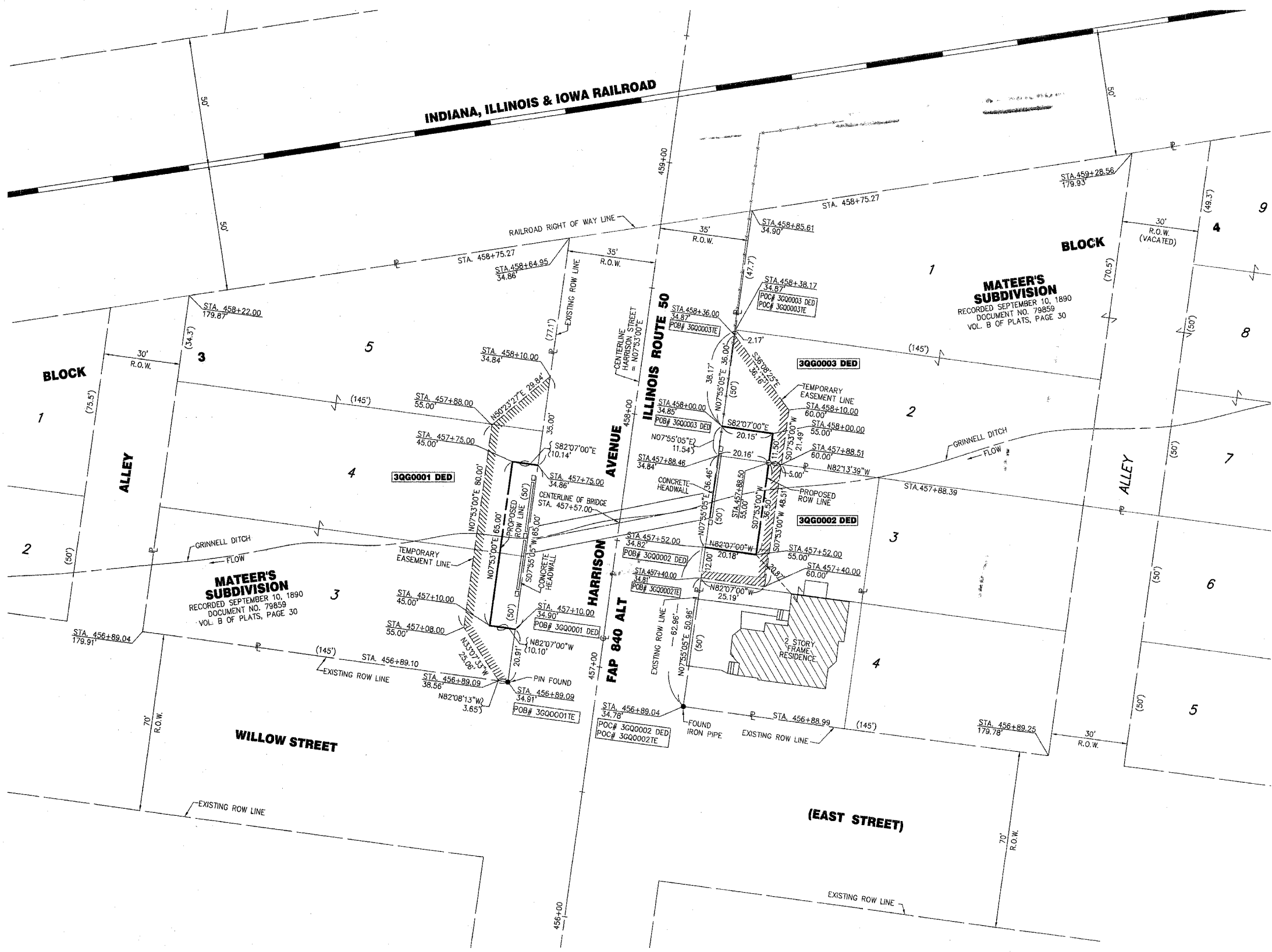
SCALE: VERT. _____
HORIZ. _____

DATE _____ DRAWN BY _____
CHECKED BY _____

FEDERAL AID ROUTE NO.	SEC.	COUNTY	TOTAL SHEETS	SHEET NO.
840A (PRE-1)	KANKAKEE	24	10	
I/IWA REGION 5		ILLINOIS PROJECT		

CONTRACT 6W31

MAW-TE-NO BOURBONNAIS RESERVATION T31N, R12E, 3RD P.M.



Parcel No. 3QG0001 DED

KEY OUTDOOR, INC.

TOTAL HOLDING = 0.514 ACRES ± (22,389 SQ FT)
 TOTAL R.O.W. REQUIRED = 0.015 ACRES ± (658 SQ FT)
 TEMPORARY EASEMENT = 0.032 ACRES ± (1,398 SQ FT)
 PURPOSE = GRADING AND SHAPING

Parcel No. 3QG0002 DED

DORNIE DAVIS, ET UX.

TOTAL HOLDING = 0.146 ACRES ± (6,364 SQ FT)
 TOTAL R.O.W. REQUIRED = 0.017 ACRES ± (736 SQ FT)
 TEMPORARY EASEMENT = 0.011 ACRES ± (485 SQ FT)
 PURPOSE = GRADING AND SHAPING

Parcel No. 3QG0003 DED

ENGINEERED POLYMER SOLUTIONS, INC.

TOTAL HOLDING = 1.060 ACRES ± (46,155 SQ FT)
 TOTAL R.O.W. REQUIRED = 0.005 ACRES ± (232 SQ FT)
 TEMPORARY EASEMENT = 0.015 ACRES ± (636 SQ FT)
 PURPOSE = GRADING AND SHAPING

STATE OF ILLINOIS
 COUNTY OF COOK

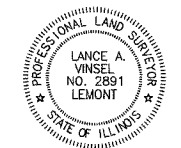
I, LANCE A. VINSEL, HEREBY CERTIFY THAT I AS AN ILLINOIS PROFESSIONAL LAND SURVEYOR, THAT THE SURVEY OF THE PROPOSED IMPROVEMENTS ON ILLINOIS ROUTE 50 WAS MADE BY ME OR UNDER MY DIRECTION AND THAT THE SURVEY IS TRUE AND COMPLETE AS SHOWN HEREON AND TO THE BEST OF MY KNOWLEDGE AND BELIEF, THAT ALL MONUMENTS AND MARKS ARE OF SUFFICIENT CHARACTER AND OCCUPY THE POSITION SHOWN HEREON AND ARE SUFFICIENT TO ENABLE THE SURVEY TO BE RETRACED. THIS PROFESSIONAL SERVICE CONFORMS TO THE CURRENT ILLINOIS MINIMUM STANDARDS FOR A BOUNDARY SURVEY.

CHICAGO, ILLINOIS

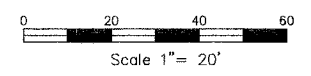
DATED THIS 17TH DAY OF MAY, A.D. 2004

Lance A. Vinsel

LANCE A. VINSEL
 IPLS 2891
 EXPIRES 30 NOVEMBER 2004



NOTE: BEARINGS ARE BASED UPON AN ASSUMED NORTH.



RIGHT OF WAY PLANS

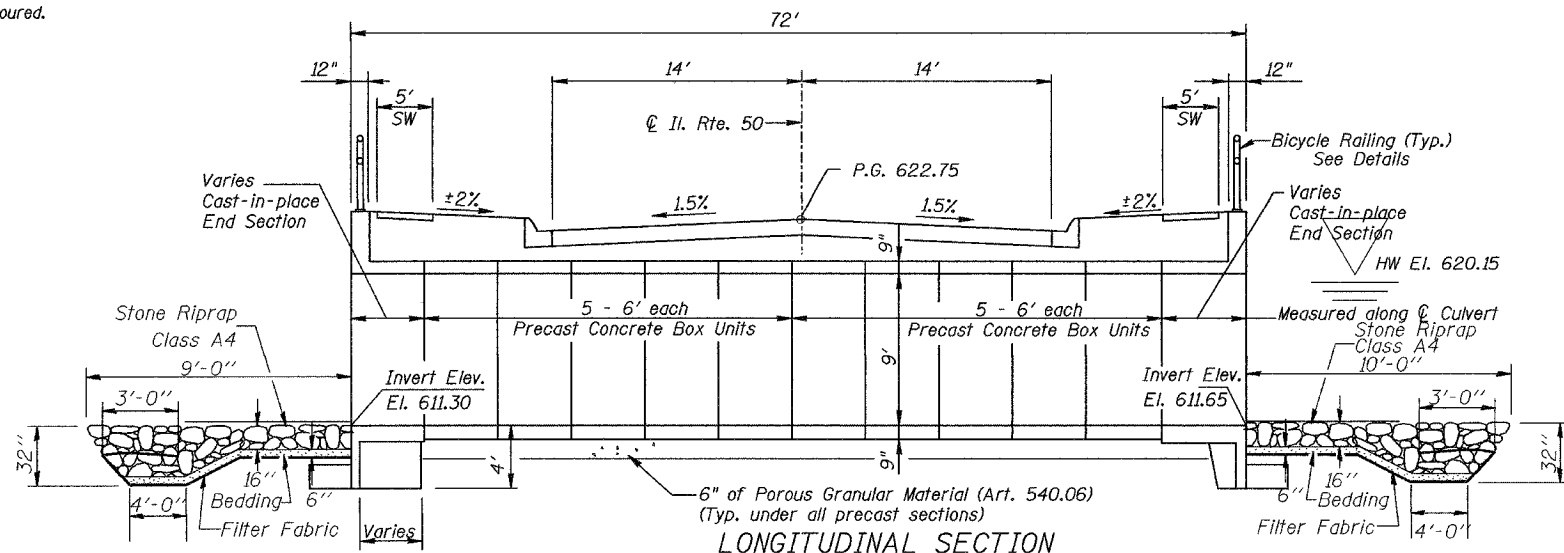
ROUTE	FAP 840 ALT (ILLINOIS ROUTE 50)
SECTION	(139Z-1)
COUNTY	KANKAKEE
JOB NO.	R-93-031-00
STATION	456+00 TO 459+00
SCALE	1" = 20'

SHEET 1 of 1

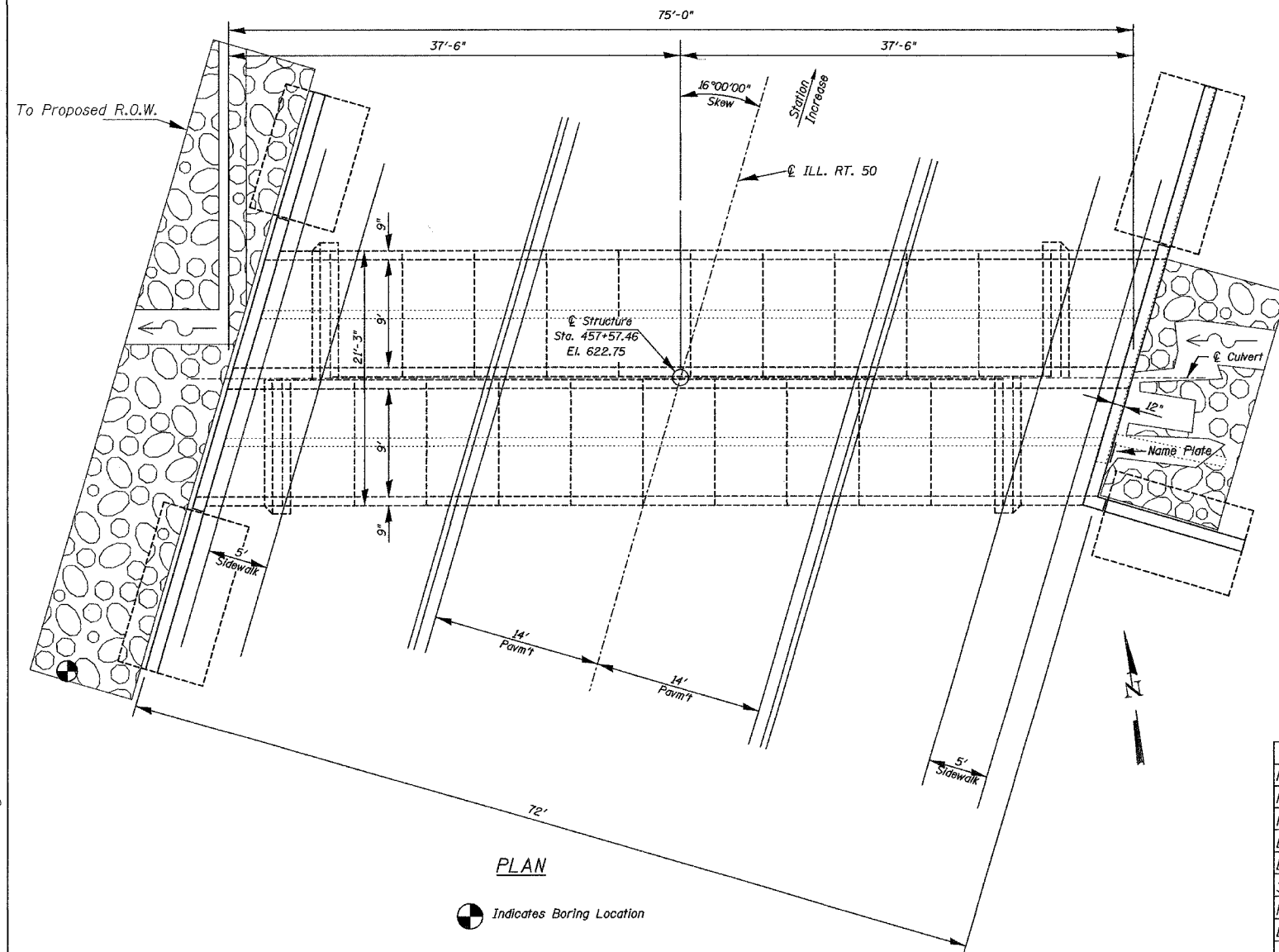
Bench Mark: Railroad Spike in Power Pole, Sta. 458+88.4 72.2'Lt, El. 627.54

Existing Structure: S.N. 046-C802 built around the mid-1930's as a single 10'x8' box culvert.
Traffic to be detoured.

No salvage



Note:
Dimensions are given at Right L's to ϕ of Roadway



PLAN

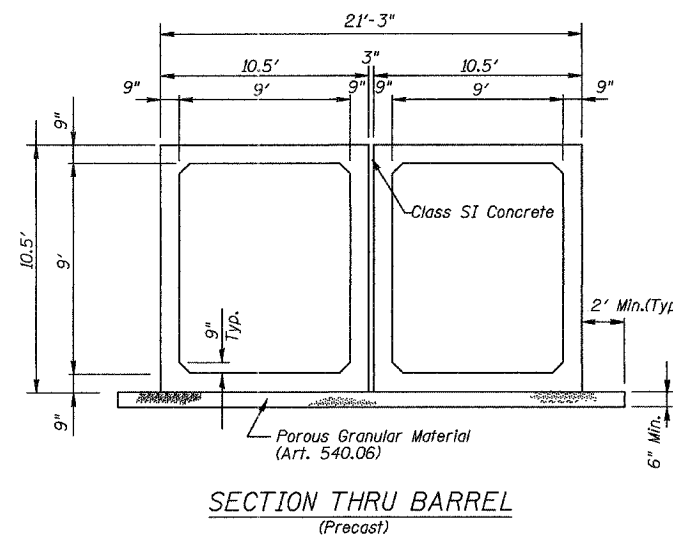
Indicates Boring Location

F.A.P. RTE.	SECTION	COUNTY	TOTAL SHEETS	SHEET NO.
840	(139Z-III)	KANKAKEE	24	11
STA.	TO STA.			
FED. ROAD DIST. NO.	ILLINOIS	FED. AID PROJECT		

CONTRACT# 66131

STATION 457+57.46
BUILT 200 BY
STATE OF ILLINOIS
F.A.P. 840A SEC. (139Z-DI)
F.A. PROJECT
LOADING HS20
STR. NO. 046-2015

NAME PLATE
(See Standard 515001)



SECTION THRU BARREL
(Precast)

General Notes:

- Precast Concrete Box Culvert sections shall conform to the requirements of Article 540.06 of the Standard Specifications and the applicable requirements of AASHTO M273.
- Reinforcement bars shall conform to the requirements of AASHTO M31 or M322.
- Lifting holes shall be filled with concrete plugs and mastic after box sections are in place.

LOADING HS20

Allow 50 lbs/sq ft for future wearing surface

DESIGN SPECIFICATIONS

2002 AASHTO

DESIGN STRESSES

FIELD UNITS

Cast-In-Place:
 $f'_c = 3500$ psi
 $f_y = 60,000$ psi (Reinf.)

Precast:
 $f'_c = 5000$ psi
 $f_y = 65,000$ psi (Reinf.)

APPROVED
FOR STRUCTURAL ADEQUACY ONLY

Ralph E. Anderson
ENGINEER OF BRIDGES AND STRUCTURES

WATERWAY INFORMATION

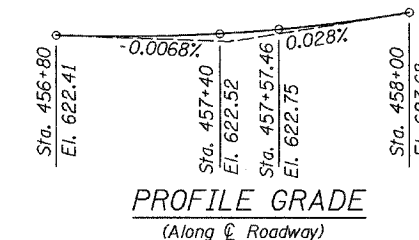
FLOOD	FREQUENCY (YR.)	Q (CFS)	OPENING - SQ FT		NAT. H.W.E.	HEAD		HEADWATER EL.**	
			EXIST.*	PROP.*		EXIST.	PROP.	EXIST.	PROP.
DESIGN	50	763	80	162	617.10	1.65	0	618.75	616.92
BASE	100	838	80	162	620.15	4.35	1.31	624.50	621.46
OVERTOPPING (EXIST.)	20	591	80		620.52	4.56	1.63	625.15	622.15
OVERTOPPING (PROP.)	100	850		162	619.20	3.74		622.22***	622.22***

- * GROSS AREA OPENING
- ** TAKEN AT THE UPSTREAM FACE OF STRUCTURE, WHICH HAS THE HIGHEST CREATED HEAD
- *** OVERTOPPING ELEVATION

BILL OF MATERIALS

ITEM	UNIT	QUANTITY
REMOVAL OF EXISTING STRUCTURES	EACH	1
NAME PLATES	EACH	1
PRECAST CONCRETE BOX CULVERT 9'X9' (M273)	FOOT	120
BOX CULVERT END SECTION, CULVERT NO. 1	EACH	1
BOX CULVERT END SECTION, SPECIAL, CULVERT NO. 1	EACH	1
STONE RIPRAP, CLASS 4	SQ YD	83
FILTER FABRIC FOR USE WITH RIPRAP	SQ YD	83
BICYCLE RAILING	FOOT	102

REVISIONS	
NAME	DATE
BDD	9/20/04
BDD	1/31/05



PROFILE GRADE
(Along ϕ Roadway)

ILLINOIS DEPARTMENT OF TRANSPORTATION
GENERAL PLAN
F.A.P. ROUTE 840A (IL. ROUTE 50) OVER DRAINAGE DITCH
KANKAKEE COUNTY
SECTION (139Z-III)

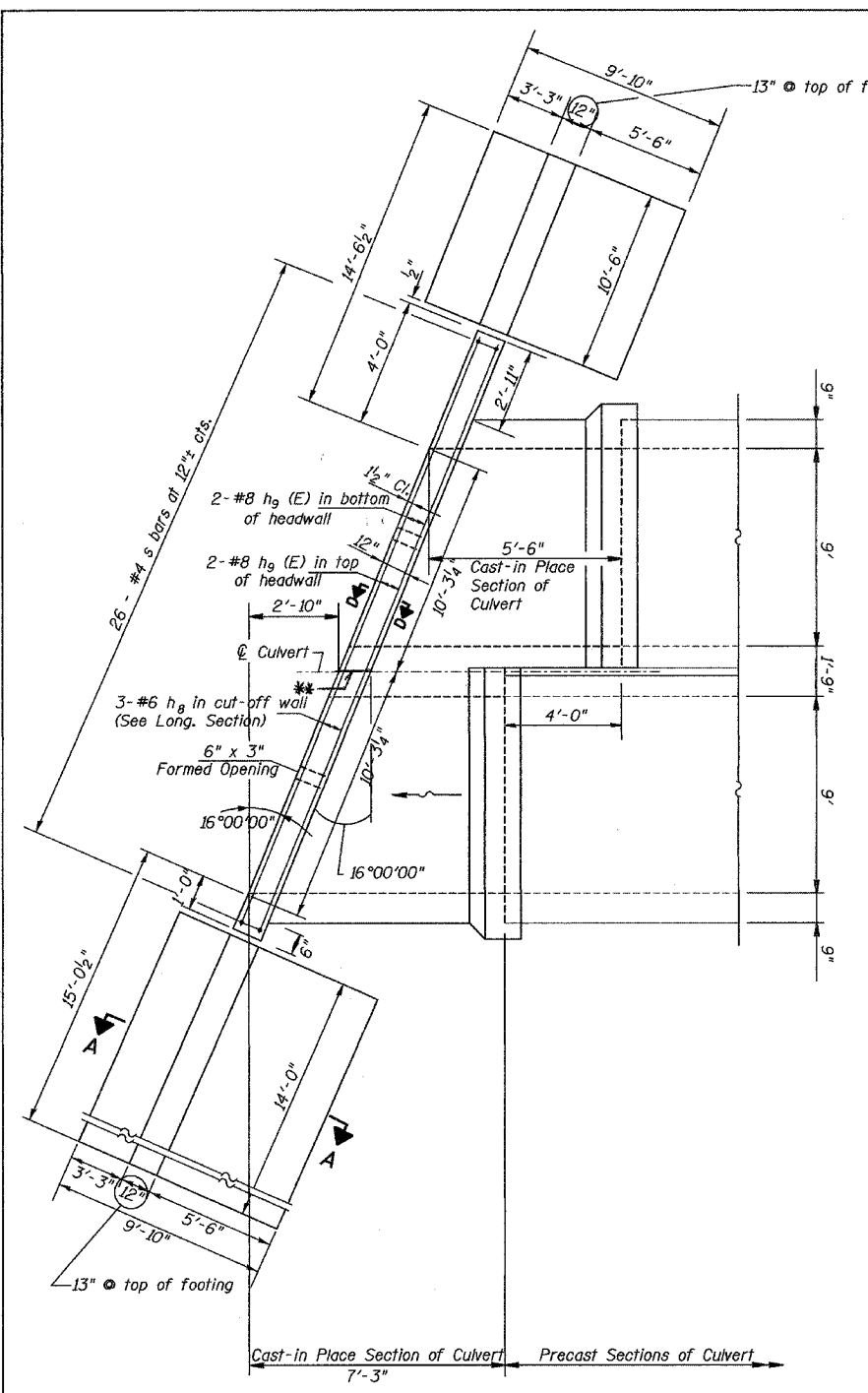
STA. 457+57.46 STRUCTURE NO. 046-2015

SCALE: NONE
DATE

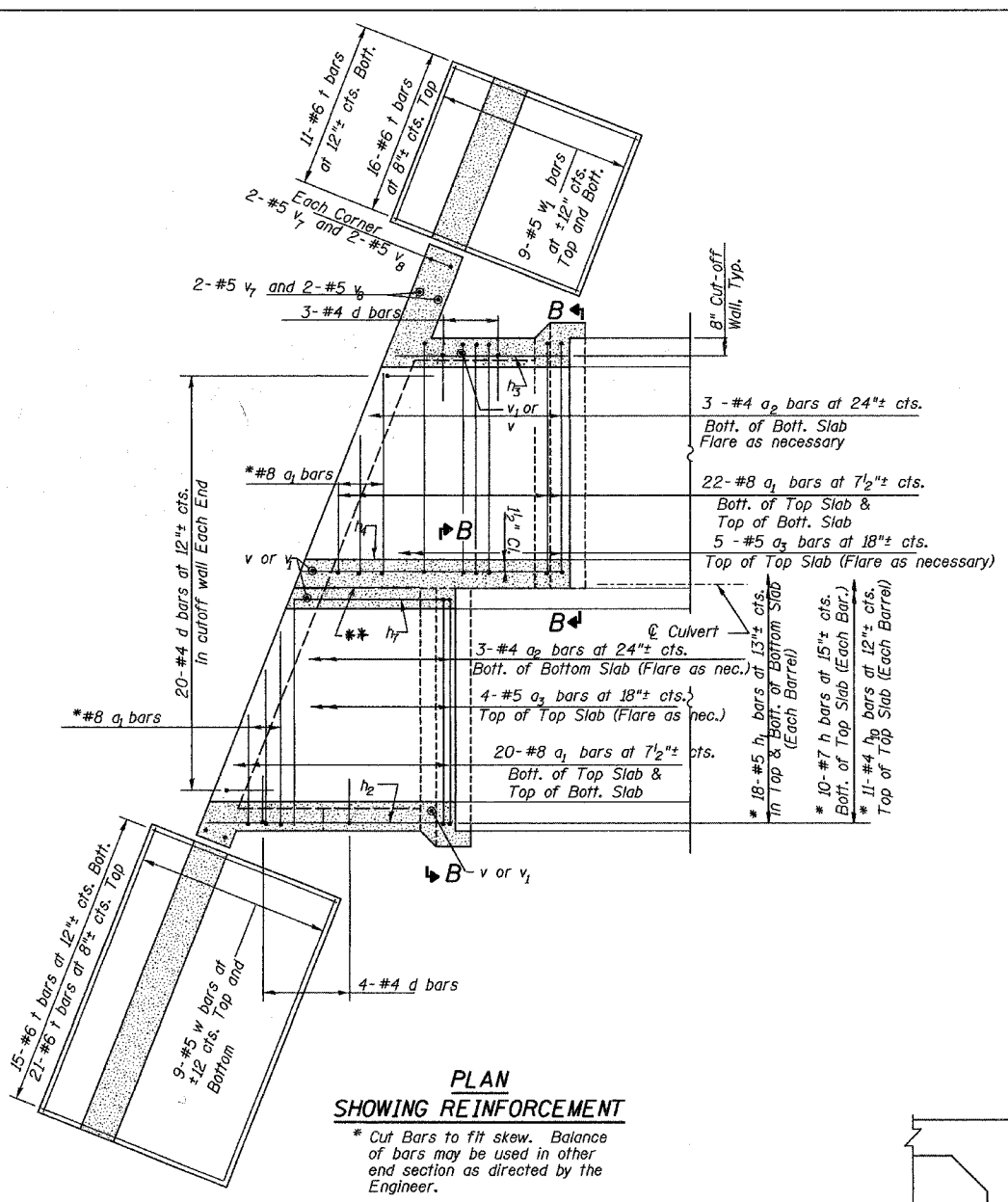
DRAWN BY
CHECKED BY

F.A.P. RTE.	SECTION	COUNTY	TOTAL SHEETS	SHEET NO.
840	(139Z-1)	KANKAKEE	24	12
STA.	TO STA.			
FED. ROAD DIST. NO.	ILLINOIS	FED. AID PROJECT		

CONTRACT# 66131

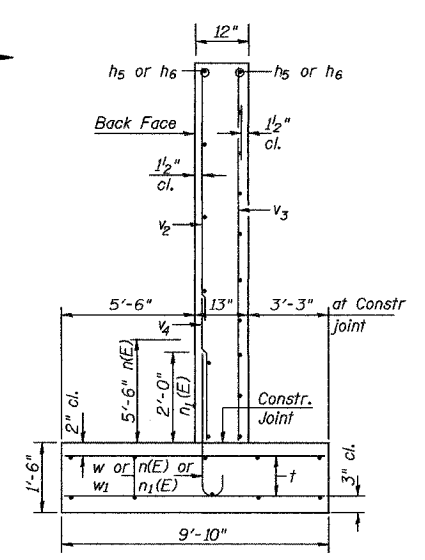


PLAN SHOWING OUTLINES

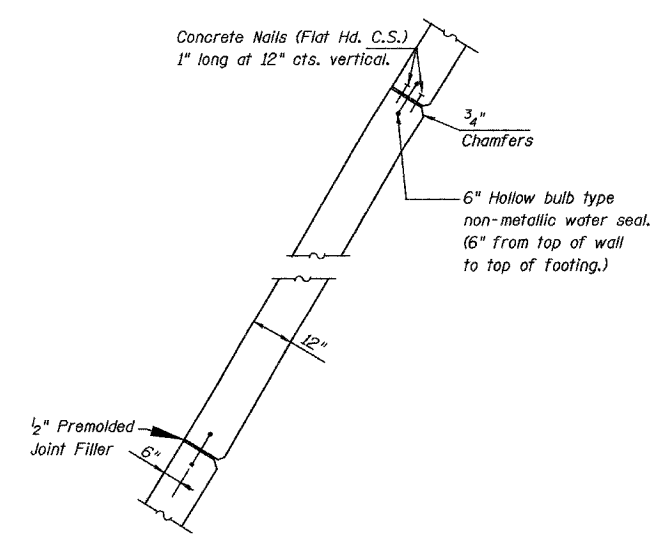


PLAN SHOWING REINFORCEMENT

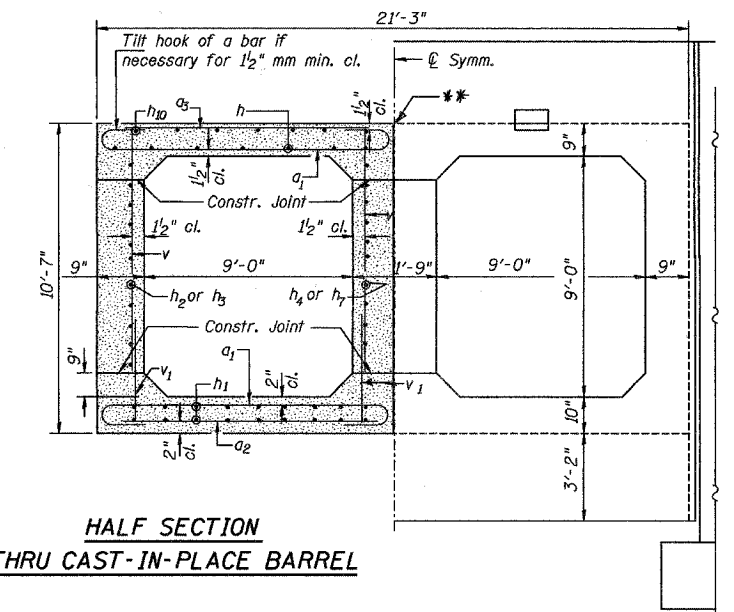
* Cut Bars to fit skew. Balance of bars may be used in other end section as directed by the Engineer.



SECTION A-A



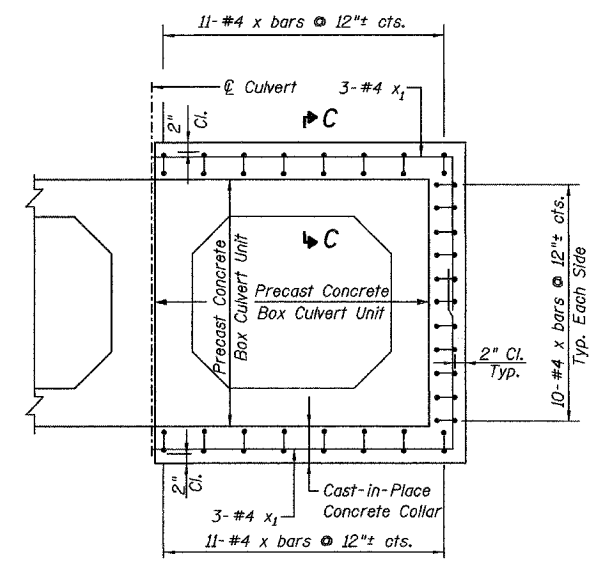
CORNER DETAIL



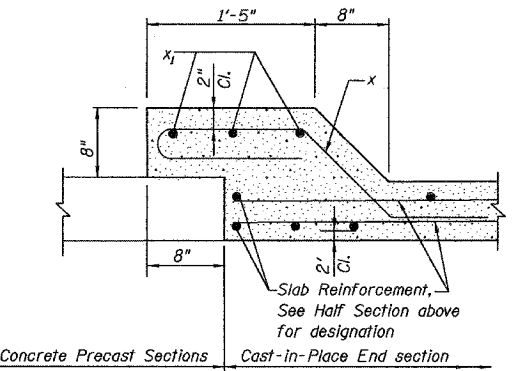
HALF SECTION THRU CAST-IN-PLACE BARREL

HALF END ELEVATION

** A 1/4" wide by 1" deep saw cut shall be made over the center of the interior wall the full length of the cast-in-place portion. One-half inch PJF shall also be placed in the headwalls at these locations.



SECTION B-B



SECTION C-C

Top Slab shown, mirror horizontally for Bottom Slab Side Slab sim.

REVISIONS	
NAME	DATE
BDD	9/20/04
BDD	1/31/05

ILLINOIS DEPARTMENT OF TRANSPORTATION
BOX CULVERT END SECTION, CULVERT NO. 1

SCALE: VERT. HORIZ.
DATE: DRAWN BY: CHECKED BY:

January 31, 2005
ep05899/sheets.dgn

F.A.P. RTE.	SECTION	COUNTY	TOTAL SHEETS	SHEET NO.
840	(139Z-1)I	KANKAKEE	24	13
STA.	TO STA.			
FED. ROAD DIST. NO.	ILLINOIS	FED. AID PROJECT		

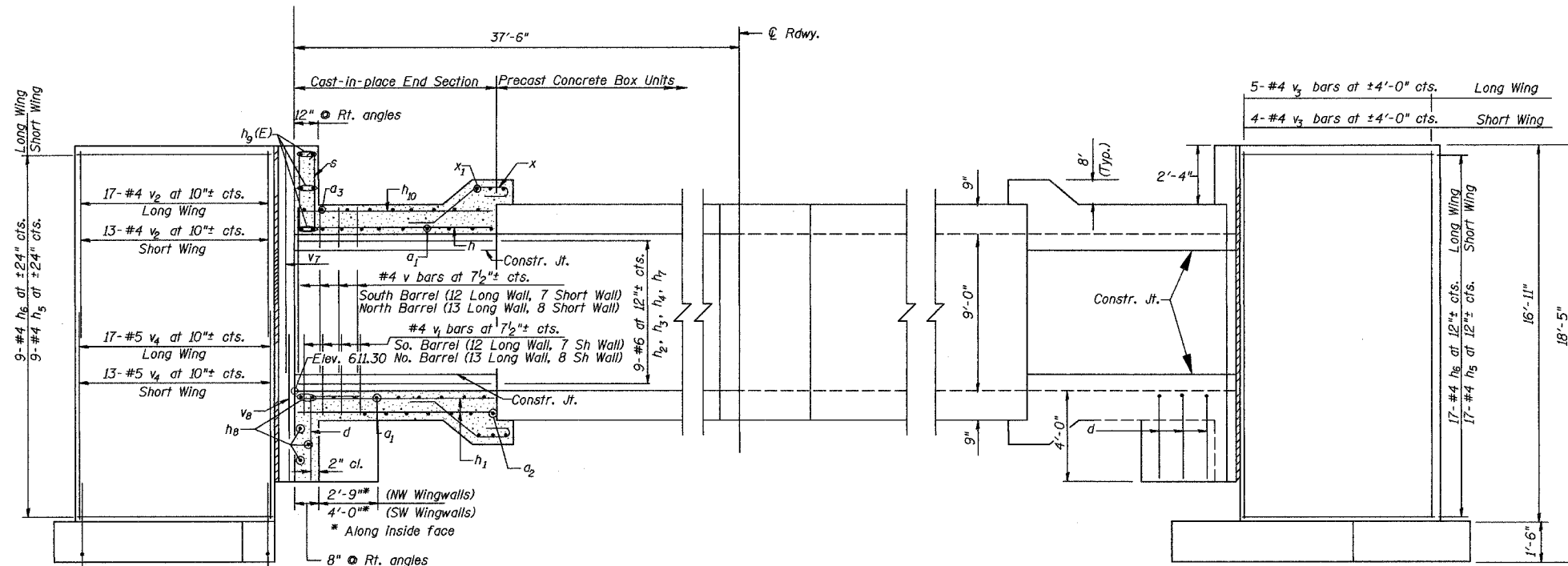
CONTRACT# 66131

BILL OF MATERIALS*

Bar	No.	Size	Length	Shape
a ₁	42	#8	12'-0"	U
a ₂	6	#4	9'-3"	—
a ₃	9	#5	9'-3"	—
d	27	#4	5'-6"	—
n(E)	28	#7	7'-6"	—
n ₁ (E)	30	#6	3'-10"	—
h	20	#7	7'-11"	—
h ₁	36	#5	7'-11"	—
h ₂	9	#6	6'-11"	—
h ₃	9	#6	4'-11"	—
h ₄	9	#6	7'-11"	—
h ₅	26	#4	10'-2"	—
h ₆	26	#4	13'-8"	—
h ₇	9	#6	4'-2"	—
h ₈	5	#6	20'-2"	—
h ₉ (E)	6	#8	25'-2"	—
h ₁₀	22	#4	7'-11"	—
t	63	#6	9'-7"	—
v	40	#4	9'-1"	—
v ₁	40	#4	2'-4"	—
v ₂	30	#4	10'-0"	—
v ₃	9	#4	16'-7"	—
v ₄	30	#5	8'-3"	—
v ₇	6	#5	11'-3"	—
v ₈	6	#5	6'-3"	—
w	18	#5	13'-8"	—
w ₁	18	#5	10'-2"	—
x	64	#4	5'-6"	—
x ₁	12	#4	16'-1"	—
s	26	#4	7'-9"	—
ESTIMATED CONCRETE			47.8 CY	

*INFORMATION GIVEN IN TABLE IS FOR INFORMATION ONLY

Reinforcement bars designated (E) shall be epoxy coated.



HALF LONG. SECTION

Showing Reinforcement

HALF ELEVATION

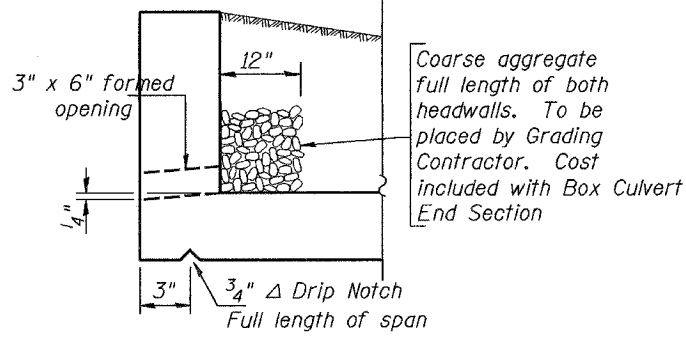
Showing Dimensions

REINFORCEMENT FRONT FACE

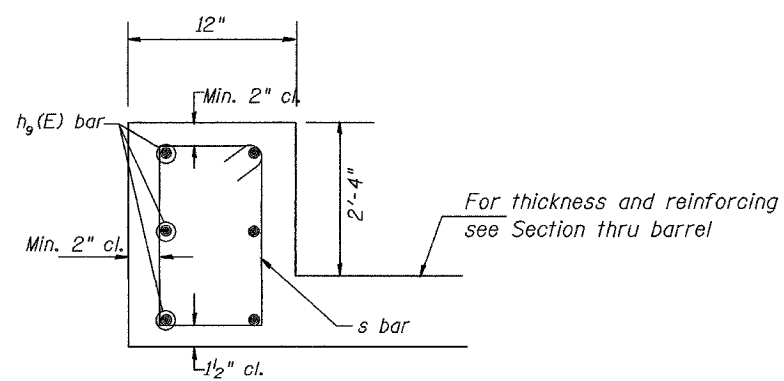
Note: Dimensions shown are along \hat{C} Culvert, U.N.O.

REINFORCEMENT BACK FACE

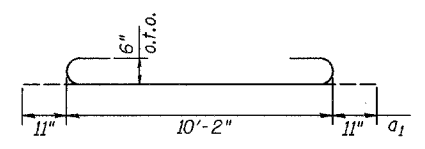
Long Wing 16-#7 n(E) bars at 10"± cts. Alternate with 17-#6 n₁(E) bars at 10"± cts.
Short Wing 12-#7 n(E) bars at 10"± cts. Alternate with 13-#6 n₁(E) bars at 10"± cts.



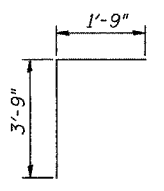
DRAIN DETAIL



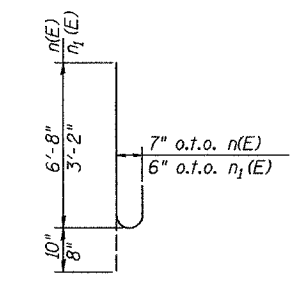
SECTION D-D



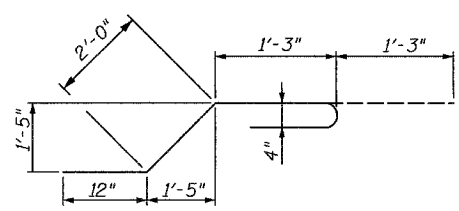
BAR a₁



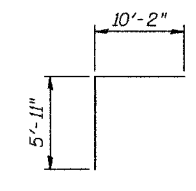
BAR d



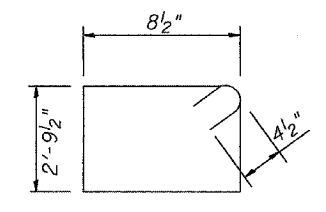
BARS n(E) AND n₁(E)



BAR x



BAR x₁



BAR s

REVISIONS	
NAME	DATE
BDD	9/20/04
BDD	1/31/05

ILLINOIS DEPARTMENT OF TRANSPORTATION
BOX CULVERT END SECTION, CULVERT NO. 1

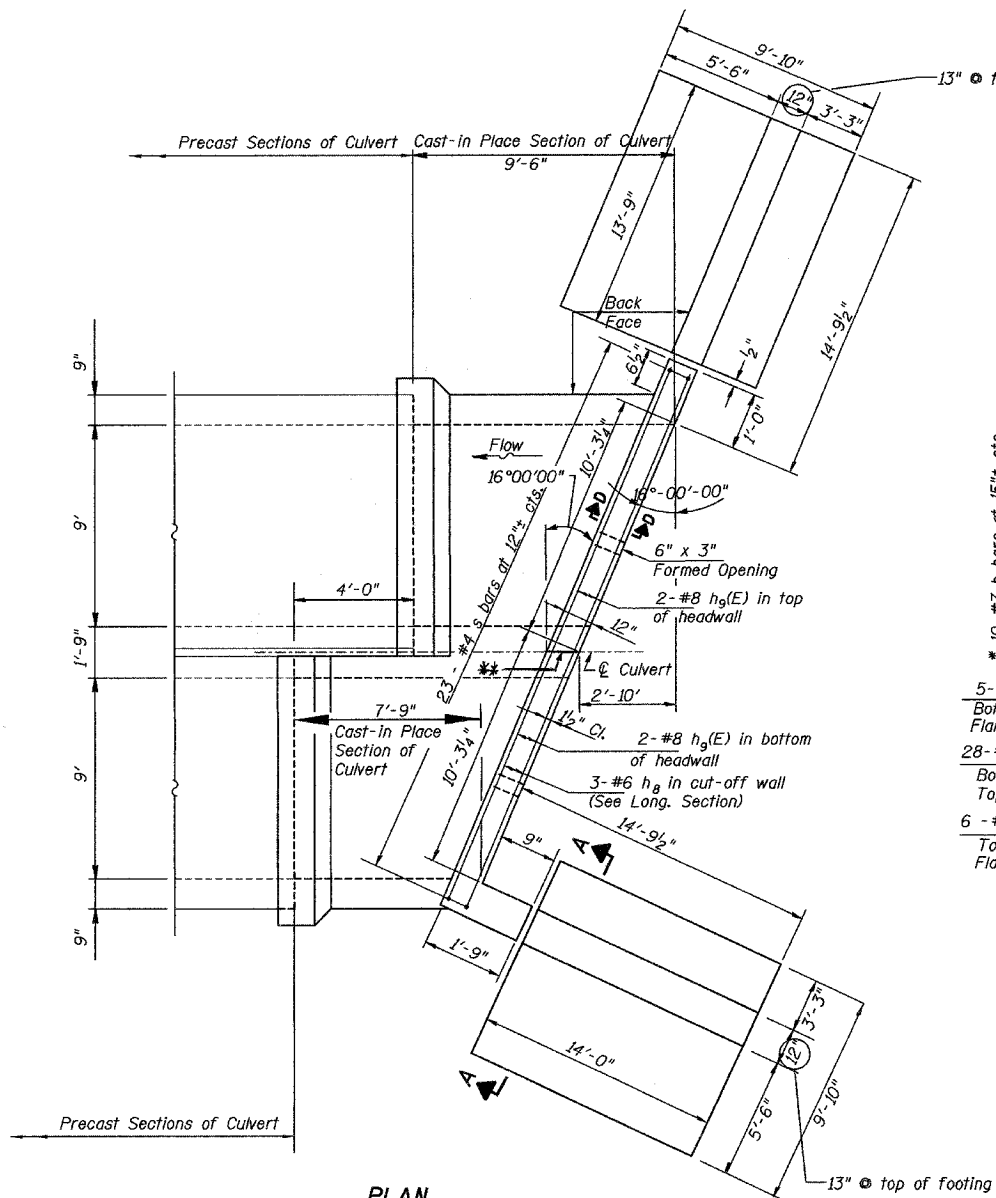
SCALE: VERT. _____
HORIZ. _____
DATE _____

DRAWN BY _____
CHECKED BY _____

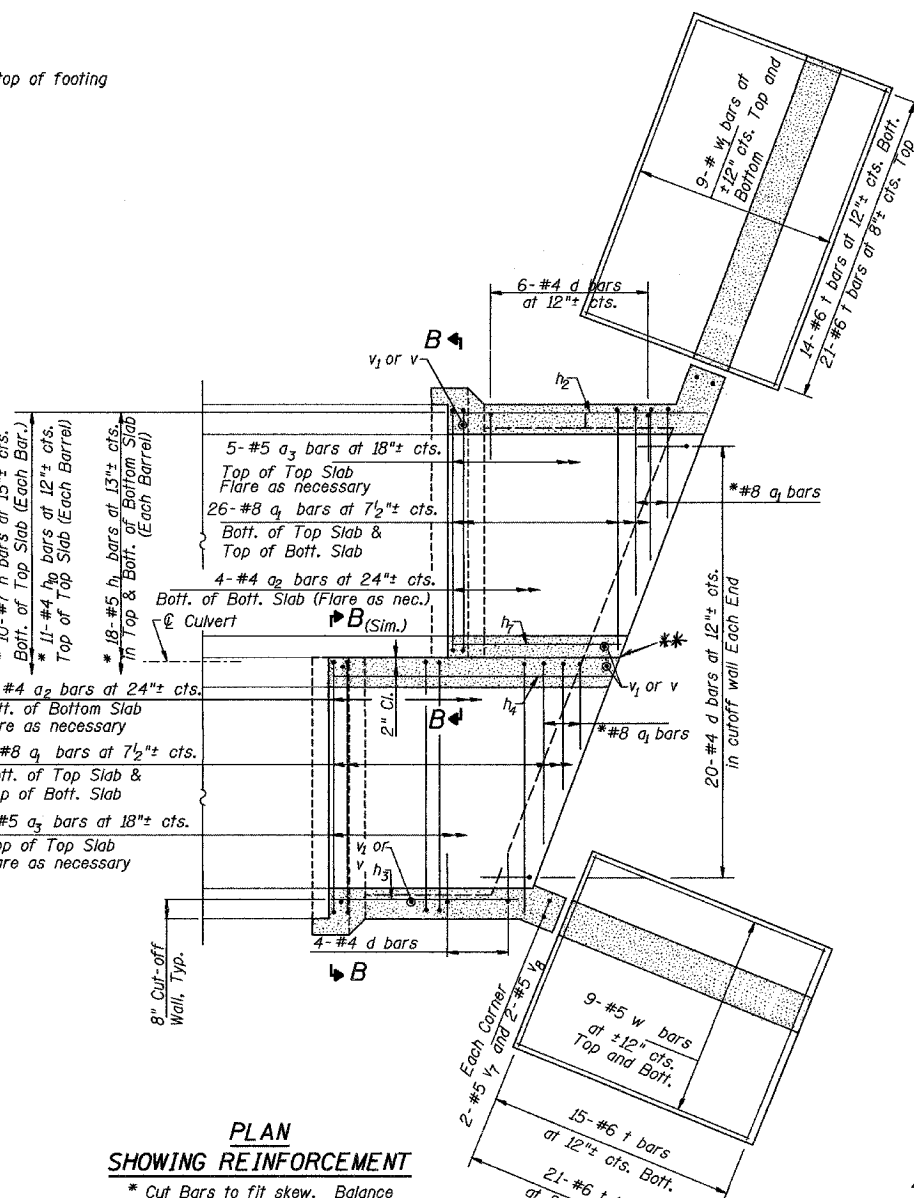
January 31, 2005
ep05899/sheets.dgn

F.A.P. RTE.	SECTION	COUNTY	TOTAL SHEETS	SHEET NO.
840	(139Z-1)	KANKAKEE	24	14
STA.	TO STA.			
FED. ROAD DIST. NO.	ILLINOIS	FED. AID PROJECT		

CONTRACT# 66131

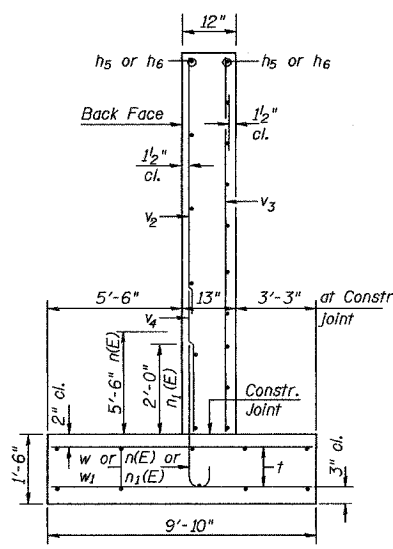


PLAN SHOWING OUTLINES

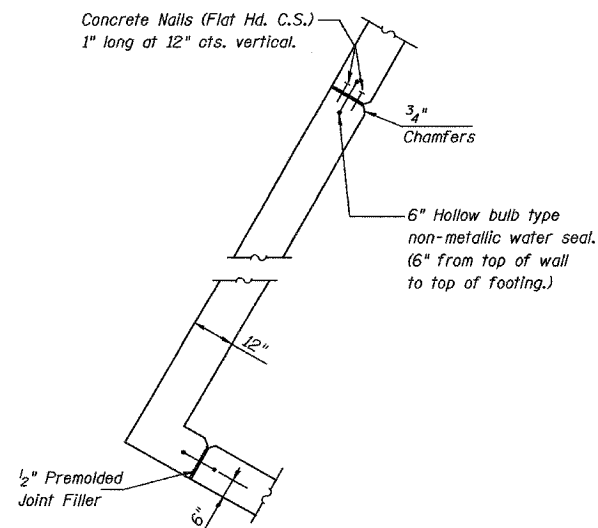


PLAN SHOWING REINFORCEMENT

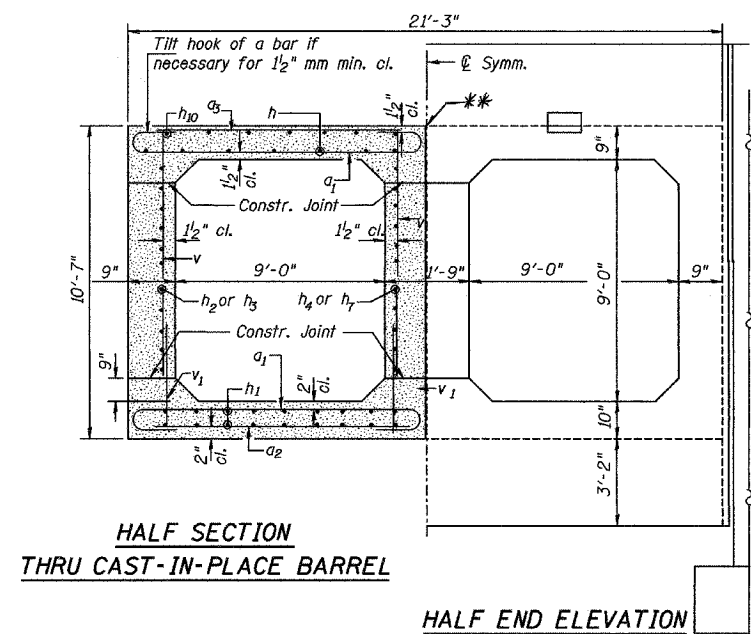
* Cut Bars to fit skew. Balance of bars may be used in other end section as directed by the Engineer.



SECTION A-A



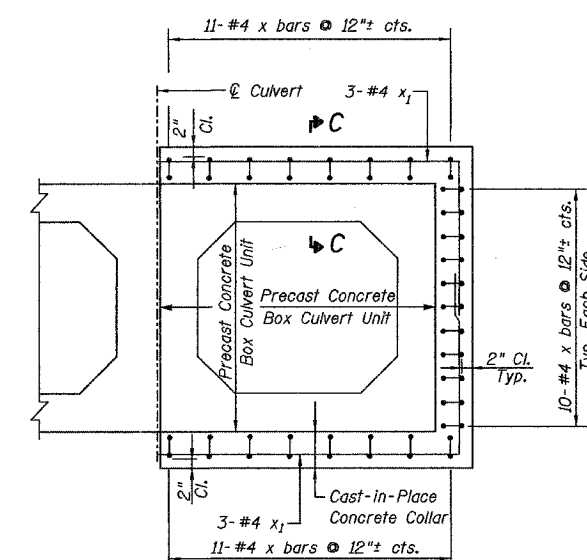
CORNER DETAIL



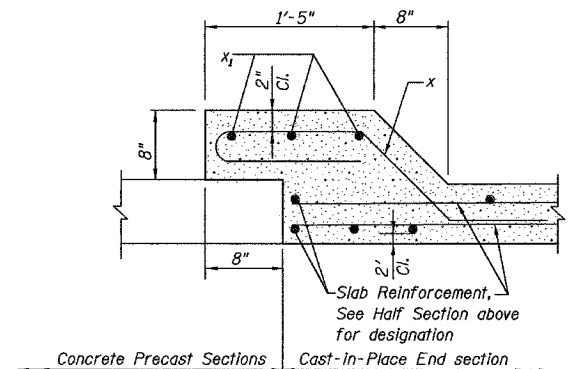
HALF SECTION THRU CAST-IN-PLACE BARREL

HALF END ELEVATION

* A 1/2" wide by 1" deep saw cut shall be made over the center of the interior wall the full length of the cast-in-place portion. One-half inch PJF shall also be placed in the headwalls at these locations.



SECTION B-B



SECTION C-C

Top Slab shown, mirror horizontally for Bottom Slab Side Slab sim.

REVISIONS		
NAME	DATE	
BDD	9/20/04	
BDD	1/31/05	

ILLINOIS DEPARTMENT OF TRANSPORTATION
BOX CULVERT END SECTION, SPECIAL, CULVERT NO. 1

SCALE: VERT. HORIZ.
DATE DRAWN BY CHECKED BY

January 31, 2005
ep05899/sheets.dgn

F.A.P. RTE.	SECTION	COUNTY	TOTAL SHEETS	SHEET NO.
B40	(139Z-1)I	KANKAKEE	24	15
STA.	TO STA.			
FED. ROAD DIST. NO.	ILLINOIS	FED. AID PROJECT		

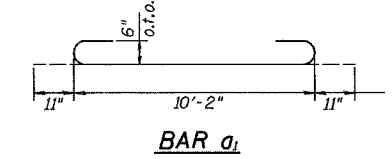
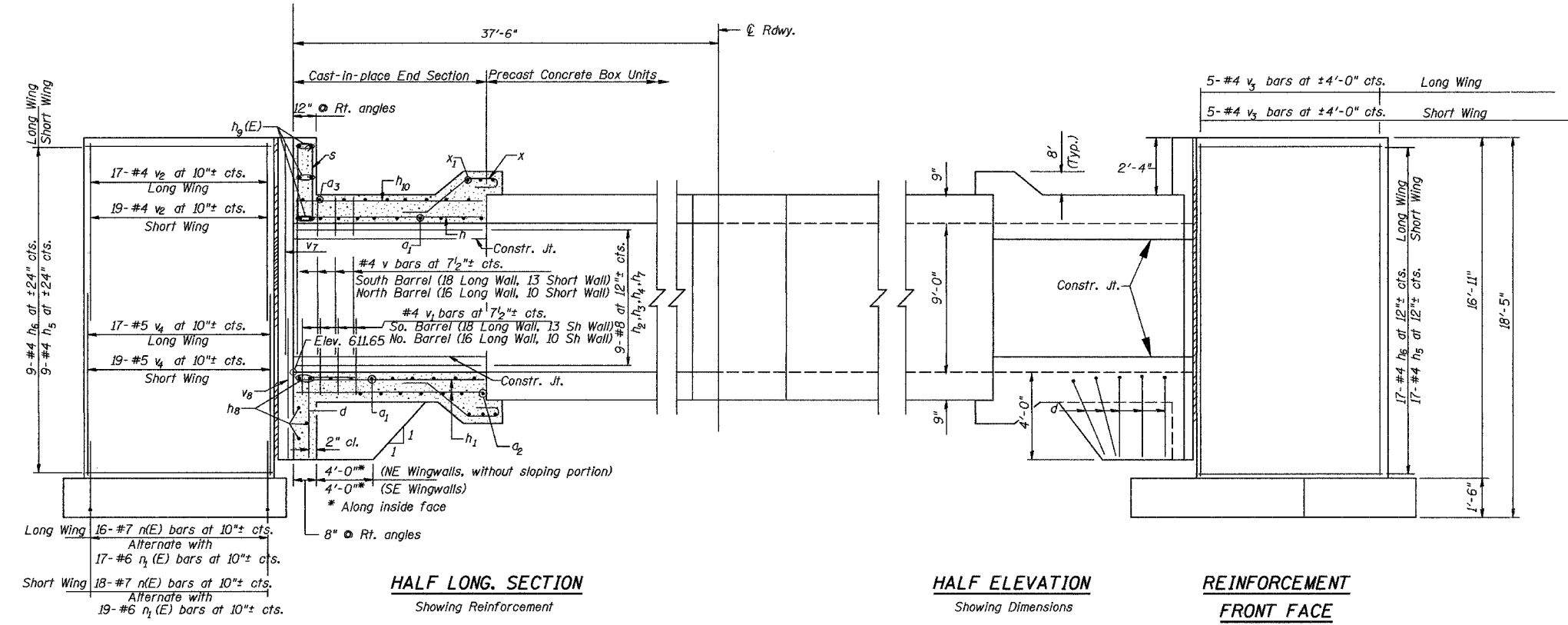
CONTRACT# 66131

BILL OF MATERIALS*

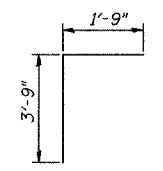
Bar	No.	Size	Length	Shape
a ₁	54	#8	12'-0"	U
a ₂	9	#4	9'-3"	U
a ₃	11	#5	9'-3"	U
d	27	#4	5'-6"	U
n(E)	34	#7	7'-6"	U
n ₁ (E)	36	#6	3'-10"	U
h	20	#7	10'-3"	U
h ₁	36	#5	10'-3"	U
h ₂	9	#6	9'-4"	U
h ₃	9	#6	7'-4"	U
h ₄	9	#6	10'-3"	U
h ₅	26	#4	13'-5"	U
h ₆	26	#4	13'-8"	U
h ₇	9	#6	6'-6"	U
h ₈	5	#6	20'-2"	U
h ₉ (E)	6	#8	22'-2"	U
h ₁₀	22	#4	10'-3"	U
i	71	#6	9'-7"	U
v	57	#4	9'-1"	U
v ₁	57	#4	2'-4"	U
v ₂	36	#4	10'-0"	U
v ₃	10	#4	16'-7"	U
v ₄	36	#5	8'-3"	U
v ₇	4	#5	11'-3"	U
v ₈	4	#5	6'-3"	U
w	18	#5	13'-8"	U
w ₁	18	#5	13'-5"	U
x	64	#4	5'-6"	U
x ₁	12	#4	16'-1"	U
s	23	#4	7'-9"	U
ESTIMATED CONCRETE			48.1 CY	

*INFORMATION GIVEN IN TABLE IS FOR INFORMATION ONLY

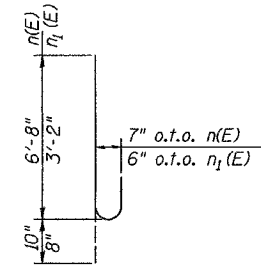
Reinforcement bars designated (E) shall be epoxy coated.



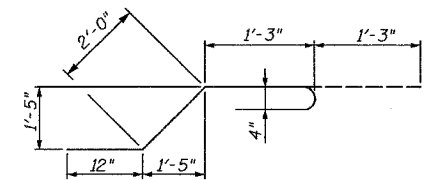
BAR a₁



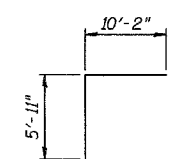
BAR d



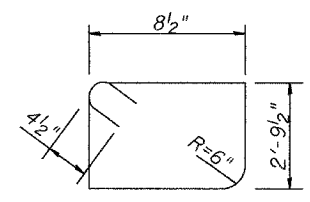
BARS n(E) AND n₁(E)



BAR x



BAR x₁



HALF LONG SECTION
Showing Reinforcement

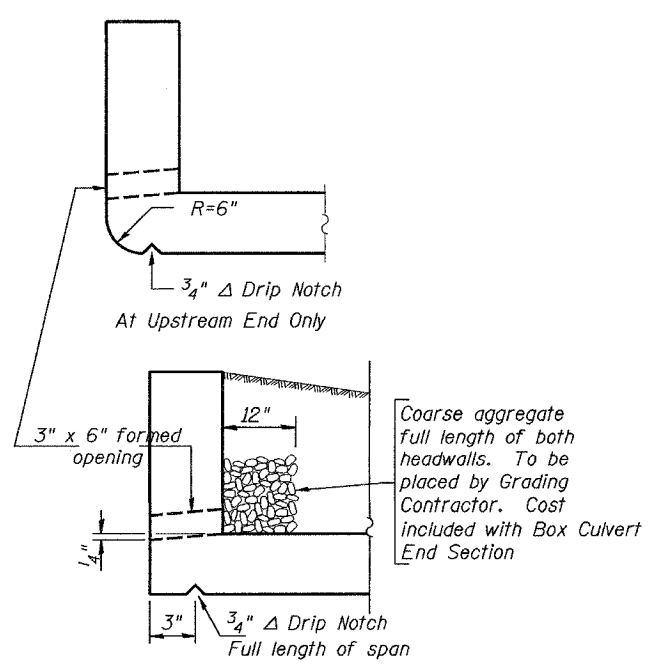
HALF ELEVATION
Showing Dimensions

REINFORCEMENT FRONT FACE

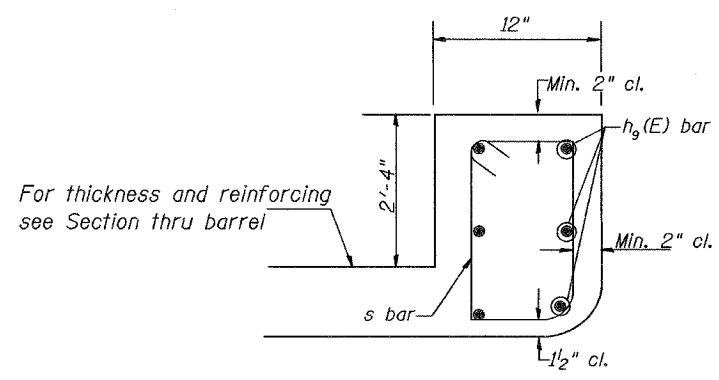
Note: Dimensions shown are along \hat{C} Culvert, U.N.O.

REINFORCEMENT BACK FACE

Long Wing 16-#7 n(E) bars at 10"± cts.
Alternate with 17-#6 n₁(E) bars at 10"± cts.
Short Wing 18-#7 n(E) bars at 10"± cts.
Alternate with 19-#6 n₁(E) bars at 10"± cts.



DRAIN DETAIL



SECTION D-D

For thickness and reinforcing see Section thru barrel

January 31, 2005
ep05899/sheets.dgn

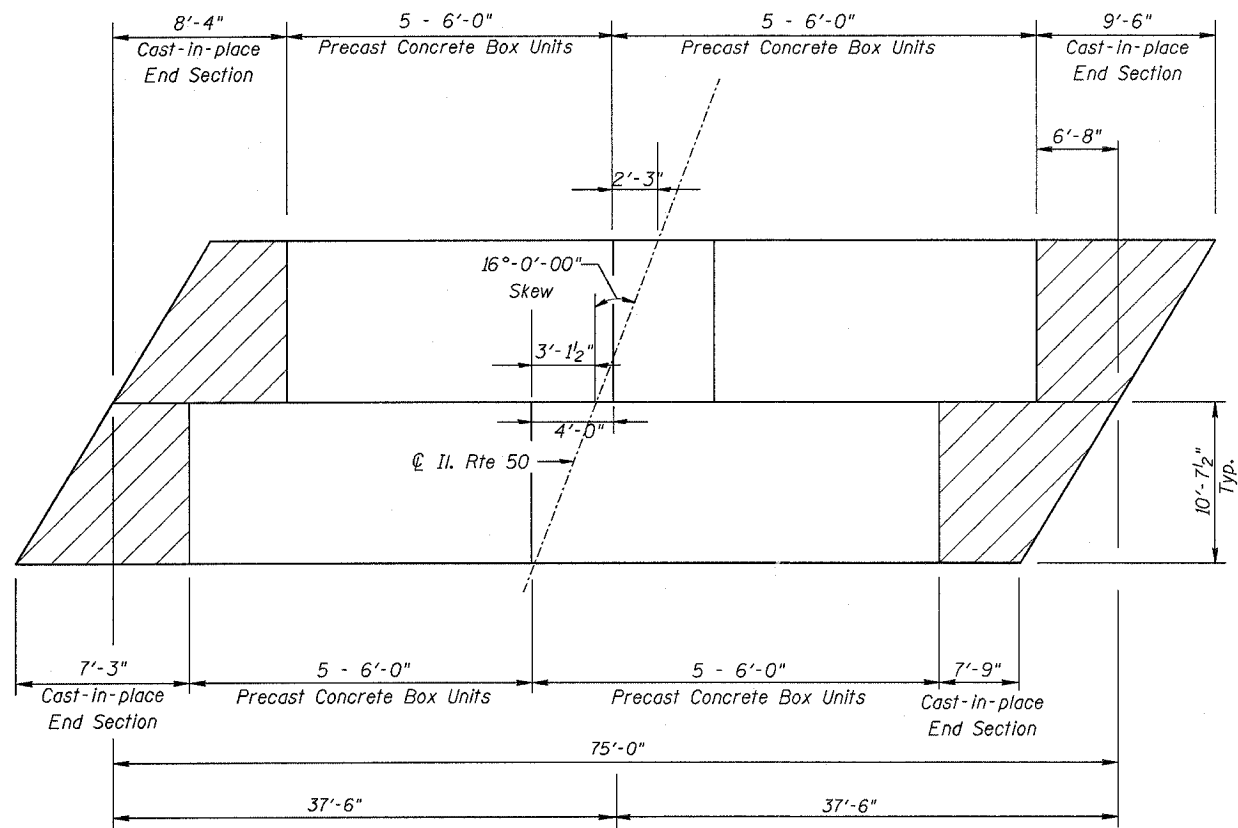
REVISIONS	
NAME	DATE
BDD	9/20/04
BDD	1/31/05

ILLINOIS DEPARTMENT OF TRANSPORTATION
BOX CULVERT END SECTION, SPECIAL, CULVERT NO. 1

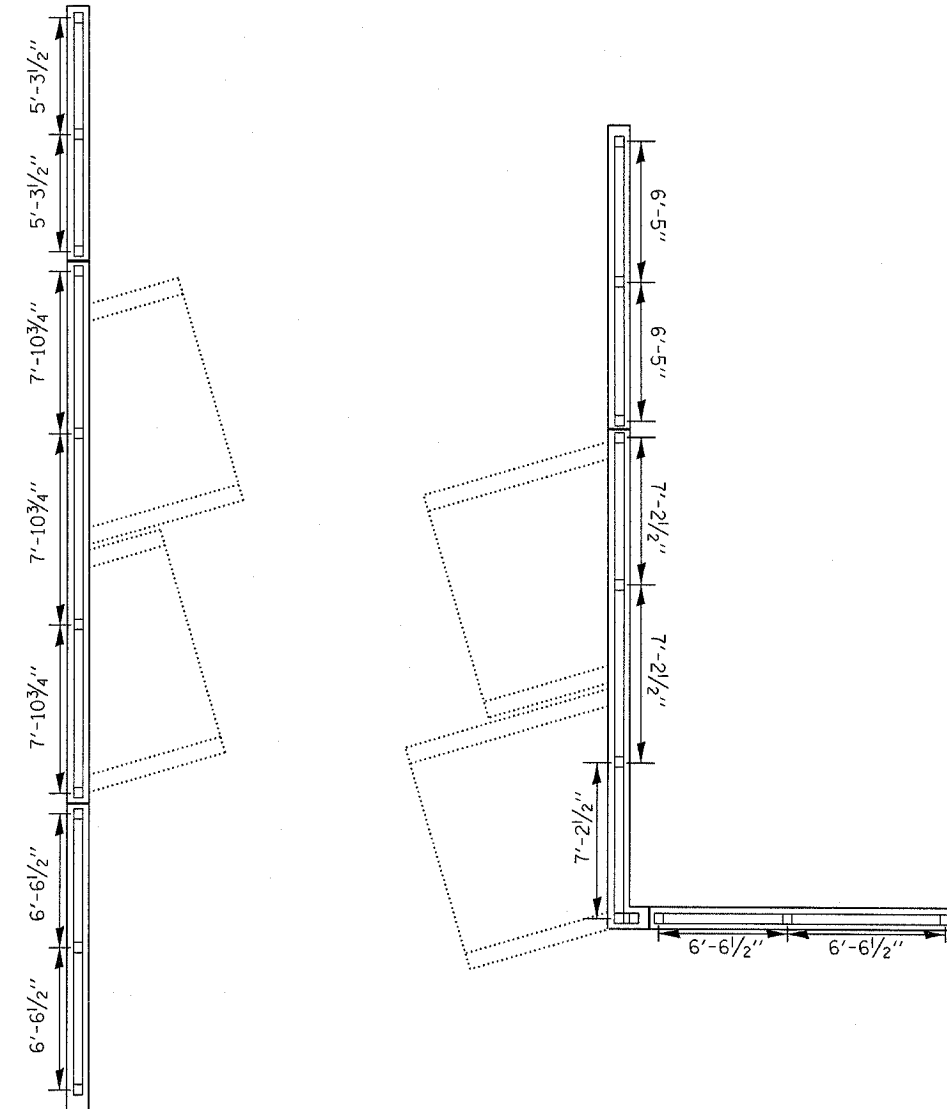
SCALE: VERT. HORIZ.
DATE: DRAWN BY: CHECKED BY:

F.A.P. RTE.	SECTION	COUNTY	TOTAL SHEETS	SHEET NO.
840	(139Z-1)I	KANKAKEE	24	16
STA.		TO STA.		
FED. ROAD DIST. NO.	ILLINOIS	FED. AID PROJECT		

CONTRACT# 66131



PLAN-PRECAST BOX UNIT LAYOUT



BICYCLE POST SPACING

August 5, 2004
ep05899/sheets.dgn

REVISIONS		ILLINOIS DEPARTMENT OF TRANSPORTATION BOX CULVERT MISCELLANEOUS DETAILS
NAME	DATE	
		SCALE: VERT. HORIZ. DATE
DRAWN BY		CHECKED BY

F. A. P. NO.	SECTION	COUNTY	TOTAL SHEETS	SHEET NO.
B40	(139Z-1)I	KANKAKEE	24	17
STA.		TO STA.		
FED. ROAD DIST. NO.	ILLINOIS	FED. AID PROJECT		

CONTRACT# 66131

NOTES

Railing shall be according to Section 509 of the Standard Specifications, except as noted, and will be paid for at the Contract Unit Price per foot for Bicycle Railing.

The 9 gauge fabric ties shall be according to Article 1006.27 (d) of the Standard Specifications.

Installation of the chain link fabric shall be according to Section 664 of the Standard Specifications.

Hollow structural sections shall conform to the requirements of ASTM designation A 500, Grade B, structural steel tubing.

All other steel shapes and plates shall conform to the requirements of AASHTO M 270 Grade 36.

The chain link fabric shall be placed along Bicycle Side as shown on Section A-A.

Stretcher bars shall be used at all four sides of each panel.

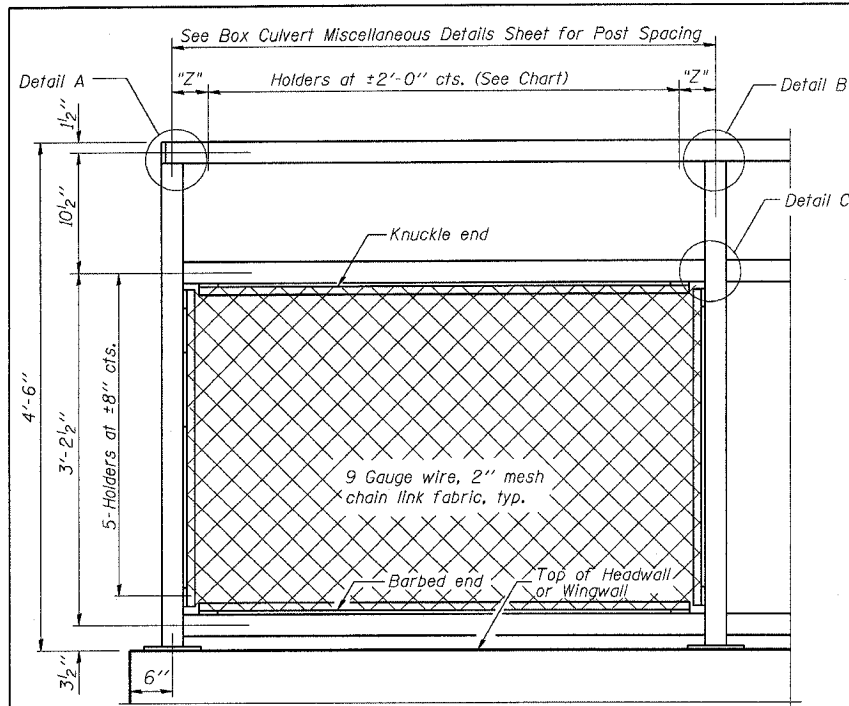
If the option of drilling and epoxy grouting the anchor rods is chosen, the Contractor shall use the capsule or the adhesive cartridge type anchor rods that have been previously tested and given a prior approval by the Department. The Contractor shall install these anchor rods in pre-drilled holes according to the manufacturer's recommendations and procedures. The capsule or the adhesive cartridge shall be sealed with pre-measured amounts of the adhesive chemical.

Space reinforcement to miss anchor rods.

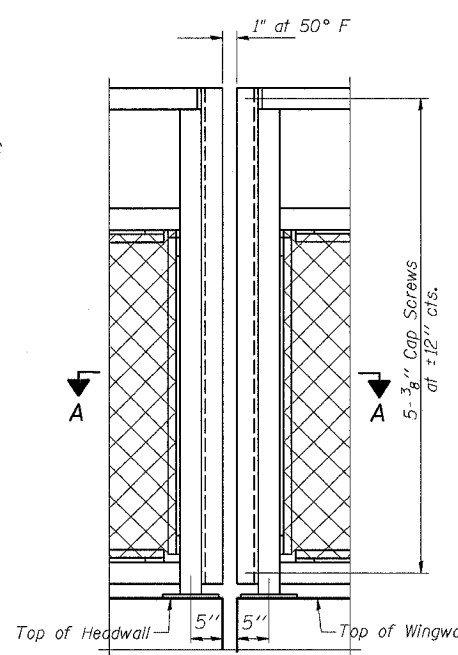
All posts, railing, splices, anchor devices, and bent plates shall be galvanized after shop fabrication according to AASHTO M 111 and ASTM A 385. All bolts, nuts, washers, and anchor rods shall be galvanized according to AASHTO M 232 except stainless steel bolts as noted.

Vent holes for galvanizing shall be placed in the posts and rails at locations that will not allow the accumulation of moisture in the members.

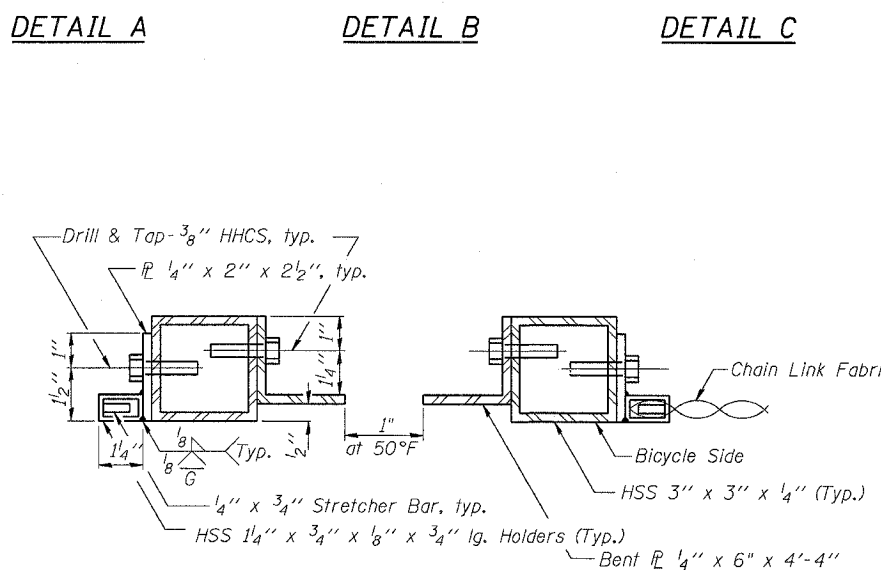
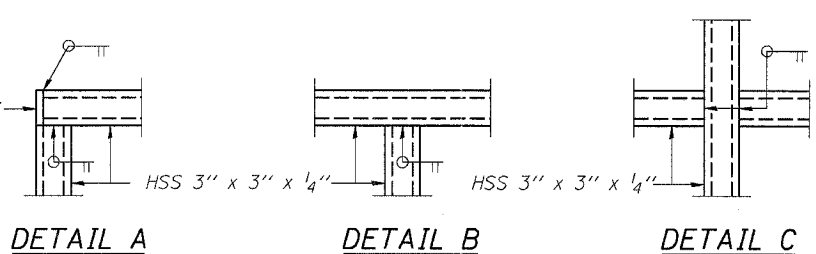
The chain link fabric shall conform to the requirements of Article 1006.27(a)(1)a, b or c of the Standard Specifications.



BICYCLE RAILING

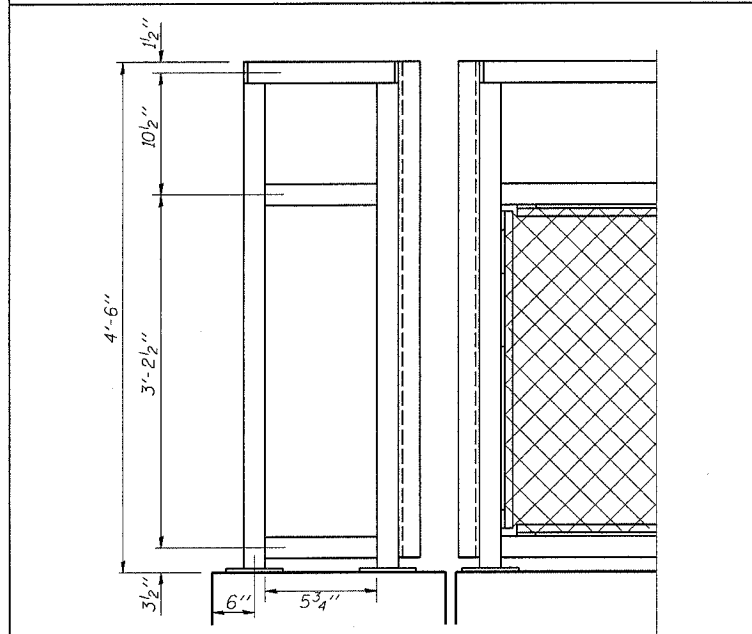


BICYCLE RAILING

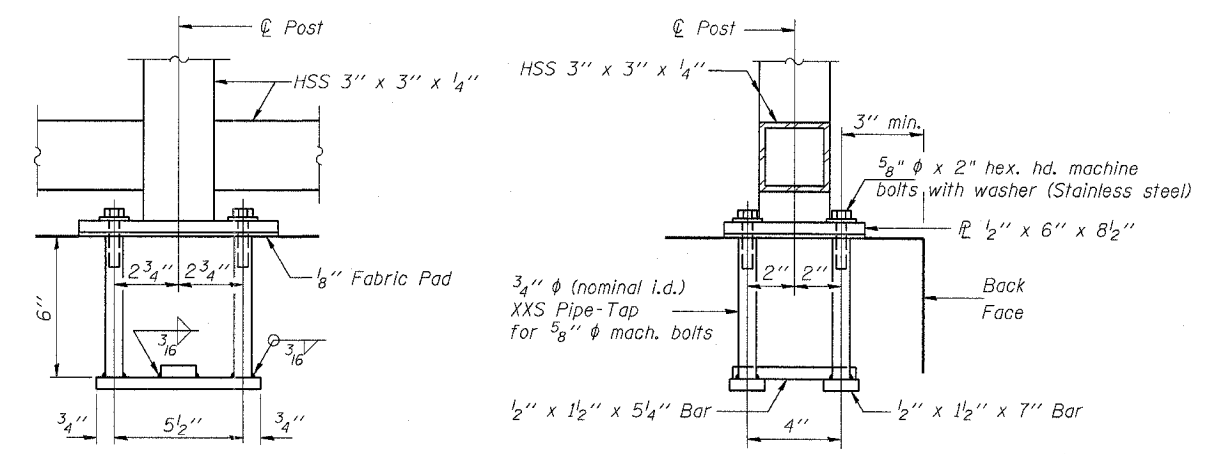
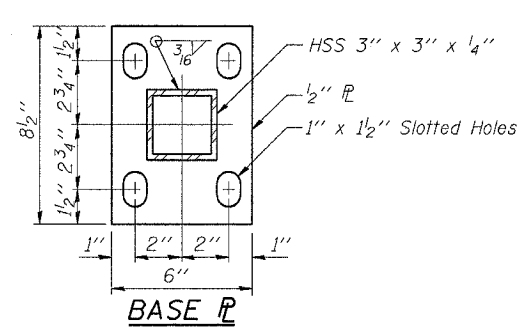


SECTION A-A

LOCATION	# OF HOLDERS	"Z" DIMENSION
West Headwall	4	11 3/8"
East Headwall	4	7 1/4"
N. W. Wingwall	3	7 3/4"
N. E. Wingwall	4	2 1/2"
S.W. & S.E. Wingwalls	4	3 1/4"



SOUTHEAST CORNER DETAIL



ANCHOR BOLT DETAILS

In lieu of the cast-in-place anchor device shown, the Contractor has the option of drilling and epoxy grouting 5/8" φ anchor rods. Embedment shall be according to the manufacturer's specifications.

BILL OF MATERIAL

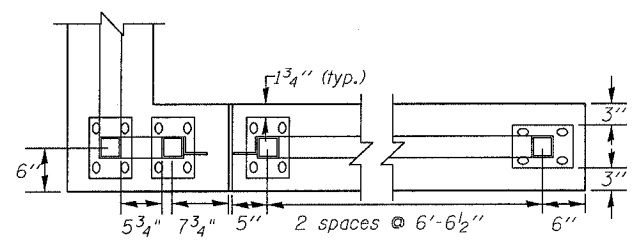
Item	Unit	Quantity
Bicycle Railing	Foot	102

REVISIONS	
NAME	DATE

ILLINOIS DEPARTMENT OF TRANSPORTATION

BICYCLE RAILING

8/17/2004 c:\projects\ep05899\sheet s.dgn



RAIL SPLICE

66131

Illinois Department of Transportation
Division of Highways
Illinois Department of Transportation

SOIL BORING LOG

Page 1 of 1
Date 2/9/98

ROUTE FAP 840A (IL 50 NB) DESCRIPTION IL 50 (Harrison St.) over Trib. to Soldier Creek LOGGED BY Whittington

SECTION 139Z,24CS,10CS,18CS1RS-1 LOCATION NE 14, SEC. 32, TWP. 31, RING. 12, 3rd PM

COUNTY Kankakee DRILLING METHOD Hollow Stem Auger HAMMER TYPE Automatic

STRUCT. NO. <u>046-c208 Existing</u>	D E P T H	B L O W S	U C S	M O D E	Surface Water Elev. <u>614.10</u> ft	D E P T H	B L O W S	U C S	M O D E
Station <u>457+60</u>					Stream Bed Elev. _____ ft				
BORING NO. <u>1</u>					Groundwater Elev.: _____ ft				
Station <u>457+22</u>					First Encounter _____ ft				
Offset <u>51.00ft Lt</u>					Upon Completion _____ ft				
Ground Surface Elev. <u>623.40</u> ft	(ft)	(6")	(tsf)	(%)	After _____ Hrs.	(ft)	(6")	(tsf)	(%)

Augered Black Silty Clay	621.40	0.7	32.0	Augered-Gray Silty Loam Till (continued)	602.40
Medium Black Silty Clay	619.90	P		Rock Rubble - Weathered Dolomite	
Stiff Silty Clay	619.40	1.0	21.0		
Stiff Gray-Brown Silty Clay Till	617.40	1.5	22.0	Auger Refusal - Racine Formation Silurian System	598.90
Stiff Gray Blocky Silty Clay with Silt Pockets & Thin Layers of Fine Sand	613.90	1.7	21.0	End of Boring	598.40
Medium Gray Wet Silt	612.40	2.0	22.0		
Very Stiff Dry Gray Silt	610.90	1.7	21.0		
Medium Gray Wet Silt	607.90	0.5	23.0		
Very Soft Gray Wet Silt	606.40	3.0	19.0		
Very Stiff Gray Dry Silt	604.40	<0.5	23.0		
Augered-Gray Silty Loam Till		P			
		0.0	27.0		
		2.5	21.0		
		4.0	11.0		
		P			

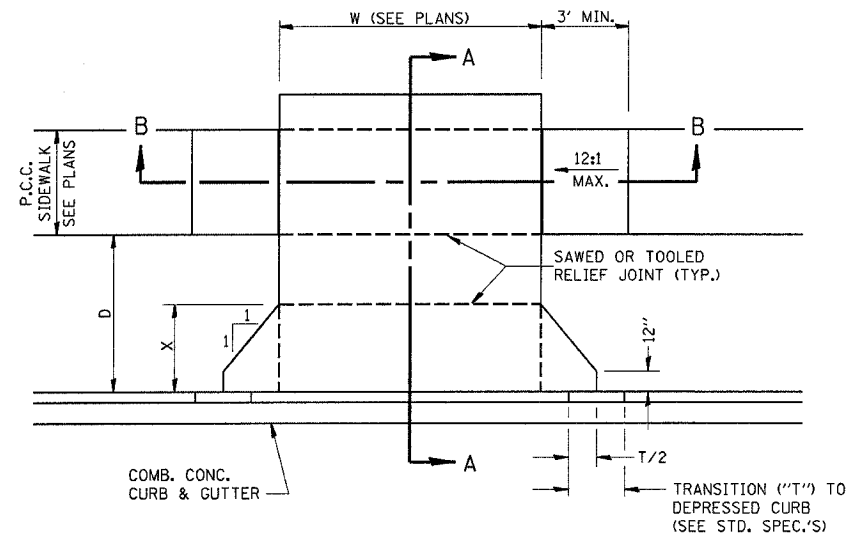
The Unconfined Compressive Strength (UCS) Failure Mode is indicated by (B-Bulge, S-Shear, P-Penetrometer)
The SPT (N value) is the sum of the last two blow values in each sampling zone (AASHTO T206)
BBS, from 137 (Rev. 8-99)

8/17/2004 c:\projects\ep05899\bor log.dgn

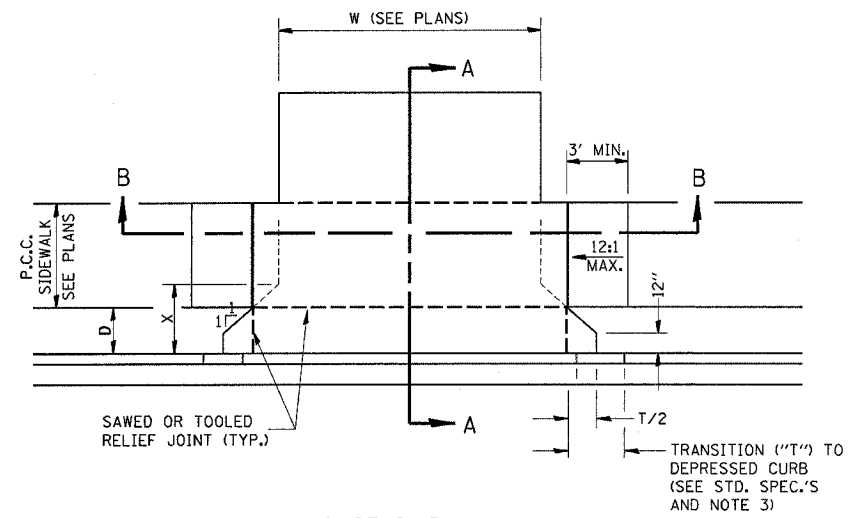
REVISIONS		ILLINOIS DEPARTMENT OF TRANSPORTATION
NAME	DATE	
		<h2 style="margin: 0;">BORING LOG</h2> <p style="margin: 0;">DRAWN BY _____</p> <p style="margin: 0;">CHECKED BY _____</p> <p style="margin: 0;">DATE _____</p>

F.A.P. RTE.	SECTION	COUNTY	TOTAL SHEETS	SHEET NO.
840	(139Z-1)	KANKAKEE	24	19
STA.	TO STA.			
FED. ROAD DIST. NO.	ILLINOIS	FED. AID PROJECT		

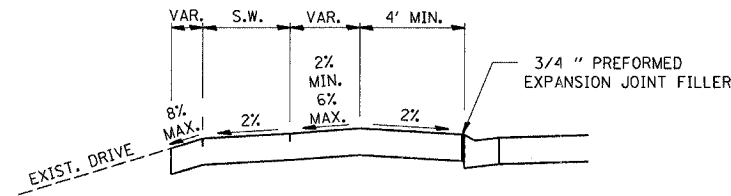
CONTRACT# 66131



CASE I ($D \geq X$)

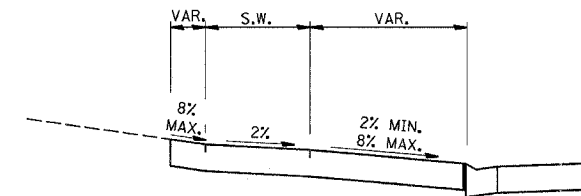


CASE I ($D < X$)

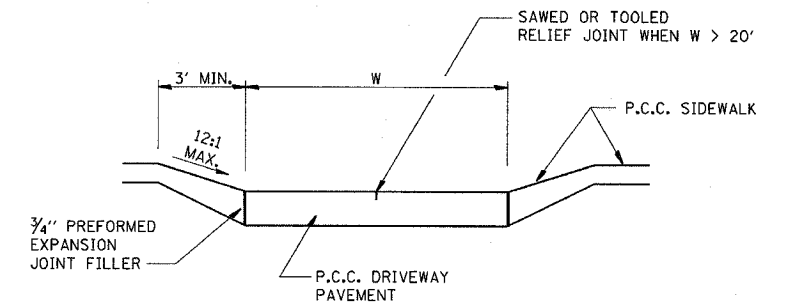


DEPRESSED ENTRANCE *
SECTION A-A

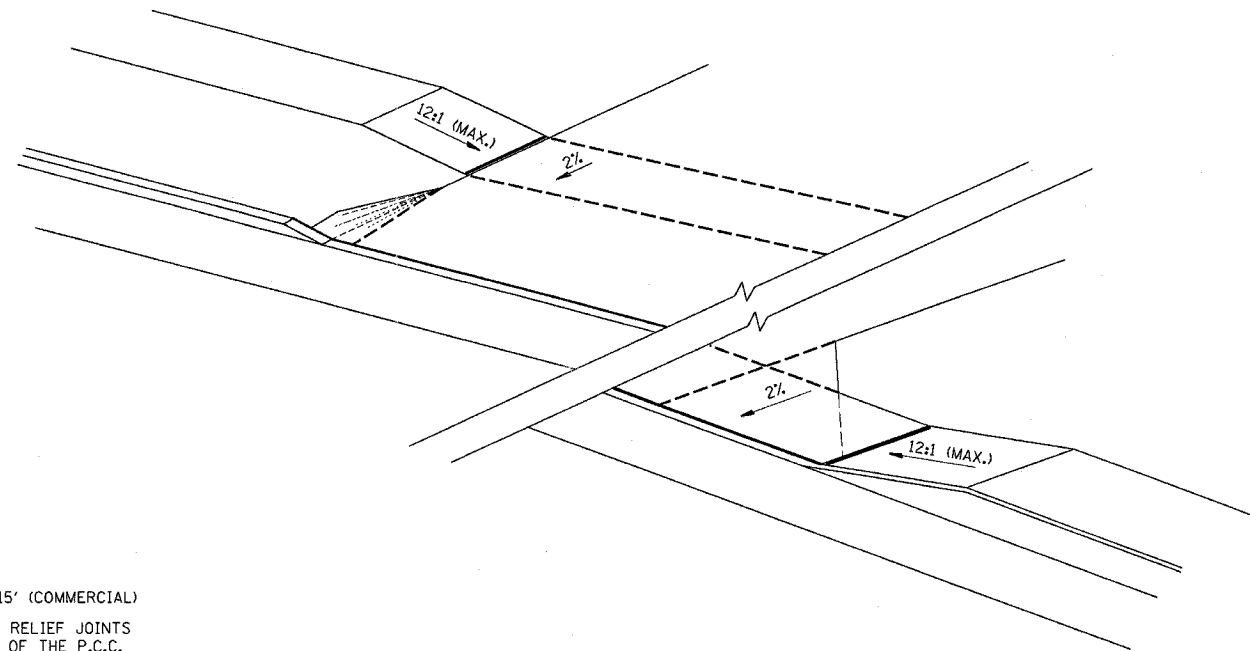
*(SEE X-SECTIONS FOR ENTRANCE PROFILE.)



ELEVATED ENTRANCE *
SECTION A-A



SECTION B-B



GENERAL NOTES:

- X = 7' (NON-COMMERCIAL) X = 15' (COMMERCIAL)
- COST OF EXPANSION JOINTS AND RELIEF JOINTS SHALL BE INCLUDED IN THE COST OF THE P.C.C. DRIVEWAY PAVEMENT.
- AS THE DIMENSION "D" APPROACHES ZERO, THE TRANSITION TO DEPRESSED CURB SHALL BE NO STEEPER THAN 12:1

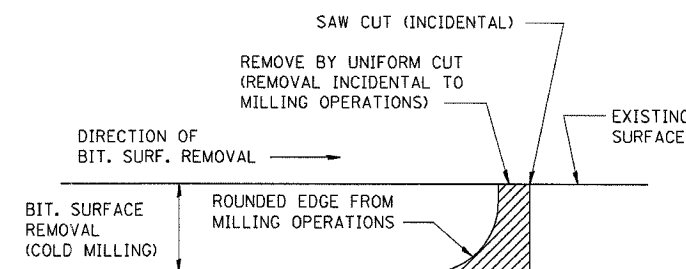
PCC URBAN ENTRANCES

REVISIONS		ILLINOIS DEPARTMENT OF TRANSPORTATION
NAME	DATE	
		<p style="text-align: center;">DETAILS</p> <p>SCALE: VERT. DRAWN BY HORIZ. CHECKED BY DATE</p>

August 5, 2004
ep05899/sheets.dgn

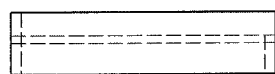
F.A.P. RTE.	SECTION	COUNTY	TOTAL SHEETS	SHEET NO.
840	(139Z-1)	KANKAKEE	24	20
STA.		TO STA.		
FED. ROAD DIST. NO.		ILLINOIS FED. AID PROJECT		

CONTRACT# 66131

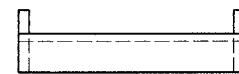


NOTE: WHEN MILLING OPERATIONS PRODUCE A ROUNDED EDGE, THEN A SAW CUT SHALL BE USED TO MANUFACTURE A PERPENDICULAR EDGE AS SHOWN IN THE DETAIL. THE ENGINEER SHALL BE THE SOLE JUDGE CONCERNING THE USE OF THIS DETAIL

BITUMINOUS DETAIL AT BUTT JOINTS

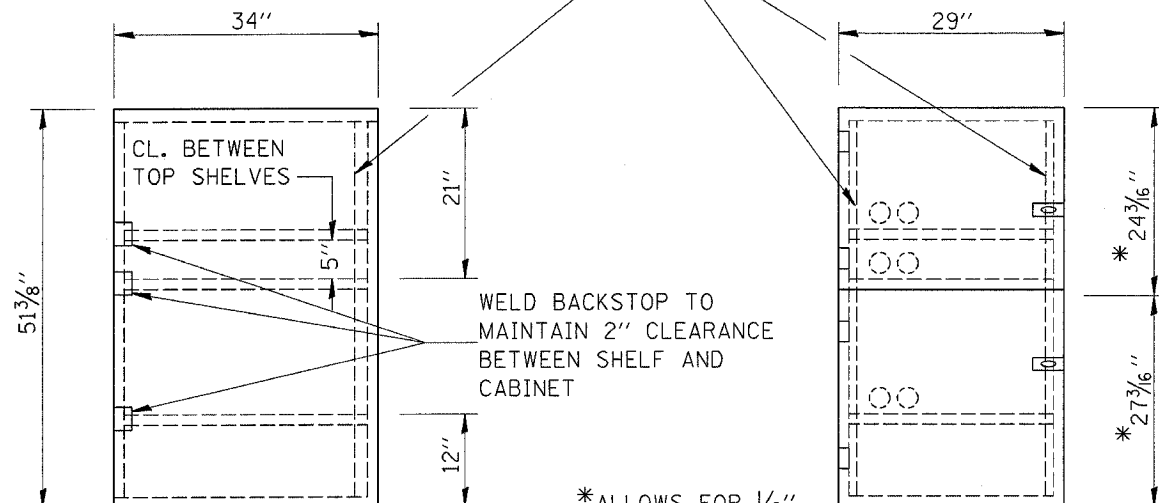


SHELF SIDE VIEW



SHELF FRONT VIEW

1/2" X 1 1/2" FLAT STOCK WELD TO FORM DOOR FRAME AND ALSO AROUND PERIMETER OF EACH DOOR.



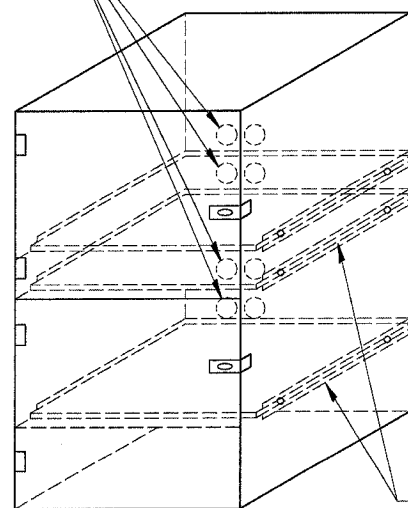
SIDE VIEW

FRONT VIEW

*ALLOWS FOR 1/8" CLEARANCE AT TOP AND BOTTOM OF CABINET AND BETWEEN DOORS.

- NOTES:
1. USE 16 GAUGE STEEL FOR CABINET.
 2. THE TOP SHELF SHALL SLIDE IN OR OUT WITH THE TOP DOOR OPEN.
 3. ALL HINGES AND HASPS WILL BE WELDED TO THE CABINET.
 4. ALL EDGES SHALL BE GROUND SMOOTH.
 5. TWO (2" DIA.) ACCESS HOLES WILL BE REQUIRED FOR EACH SHELF.
 6. CABINET SHALL BE PAINTED WITH TWO COATS OF FLAT PAINT.
 7. 2 EACH MATCHING KEY PADLOCKS, WITH 3 KEYS PROVIDED, MASTER MODEL 3 T OR EQUIVALENT.
 8. 4 EACH PLAIN STEEL, NON-REMOVABLE PIN, NO HOLE 4"X4" SQUARE CORNER HINGES TO BE WELDED ON.
 9. 2 EACH EXTRA HEAVY, PLAIN STEEL, FIXED STAPLE, NO HOLE, 7 1/4 " HASPS TO BE WELDED ON.

2" ACCESS HOLES IN REAR OF CABINET



FLAT STOCK DIMENSIONS VARY DEPENDING ON TYPE OF ROLLER ASSEMBLY.

LOCKABLE COMPUTER CABINET

REVISIONS		ILLINOIS DEPARTMENT OF TRANSPORTATION
NAME	DATE	
		DETAILS
SCALE:	VERT. HORIZ.	DRAWN BY
DATE		CHECKED BY

6231

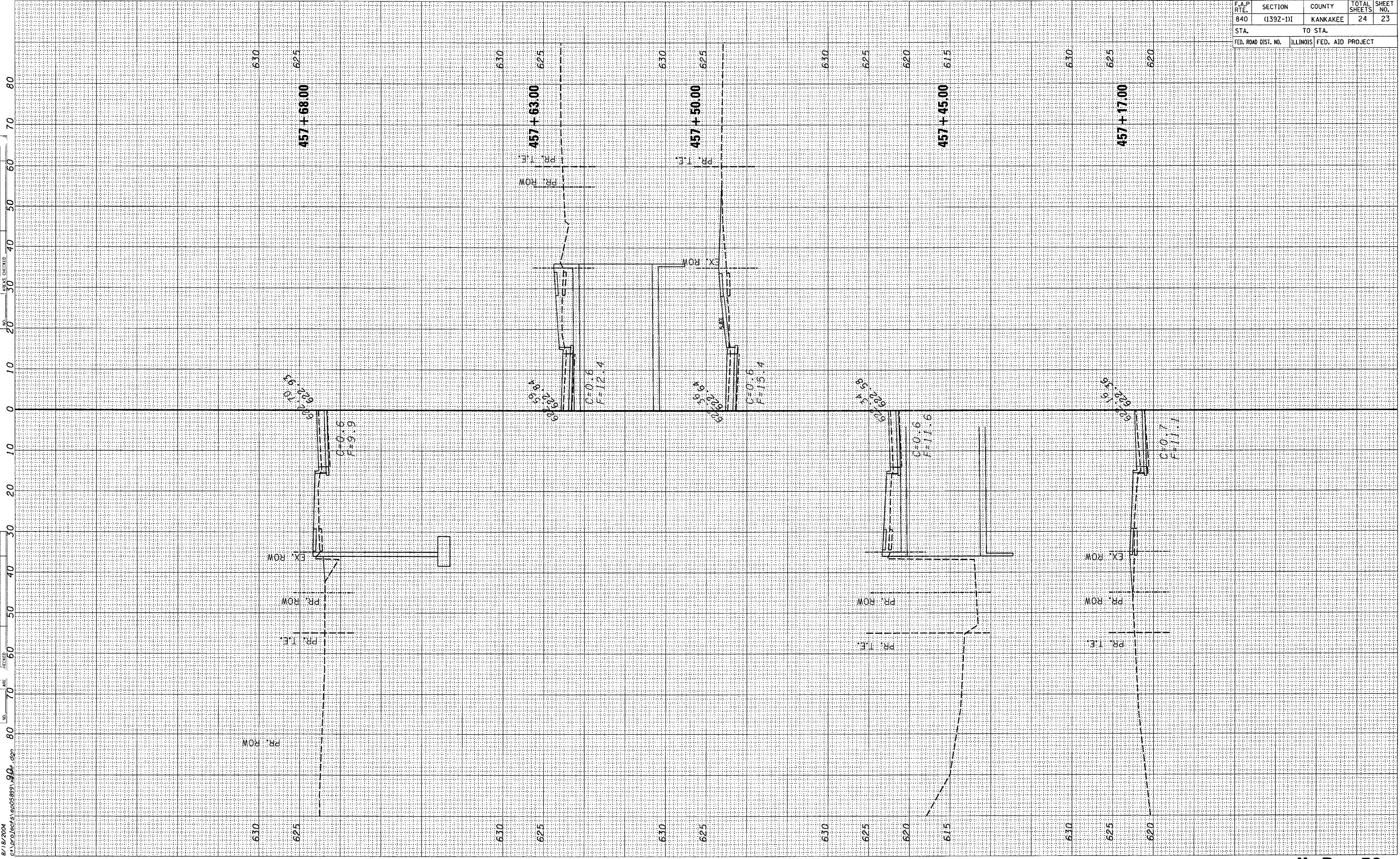
F.A.P. RTE.	SECTION	COUNTY	TOTAL SHEETS	SHEET NO.
840	(139Z-1)I	KANKAKEE	24	22
STA.		TO STA.		
FED. ROAD DIST. NO.	ILLINOIS	FED. AID PROJECT		

8/18/2004
 c:\projects\ep0589a\904.dgn
 SURVEYED BY: []
 SURVEY NO.: []
 NOTE BOOK NO.: []
 TEMPLATE: []
 AREA: []
 CHECKED BY: []

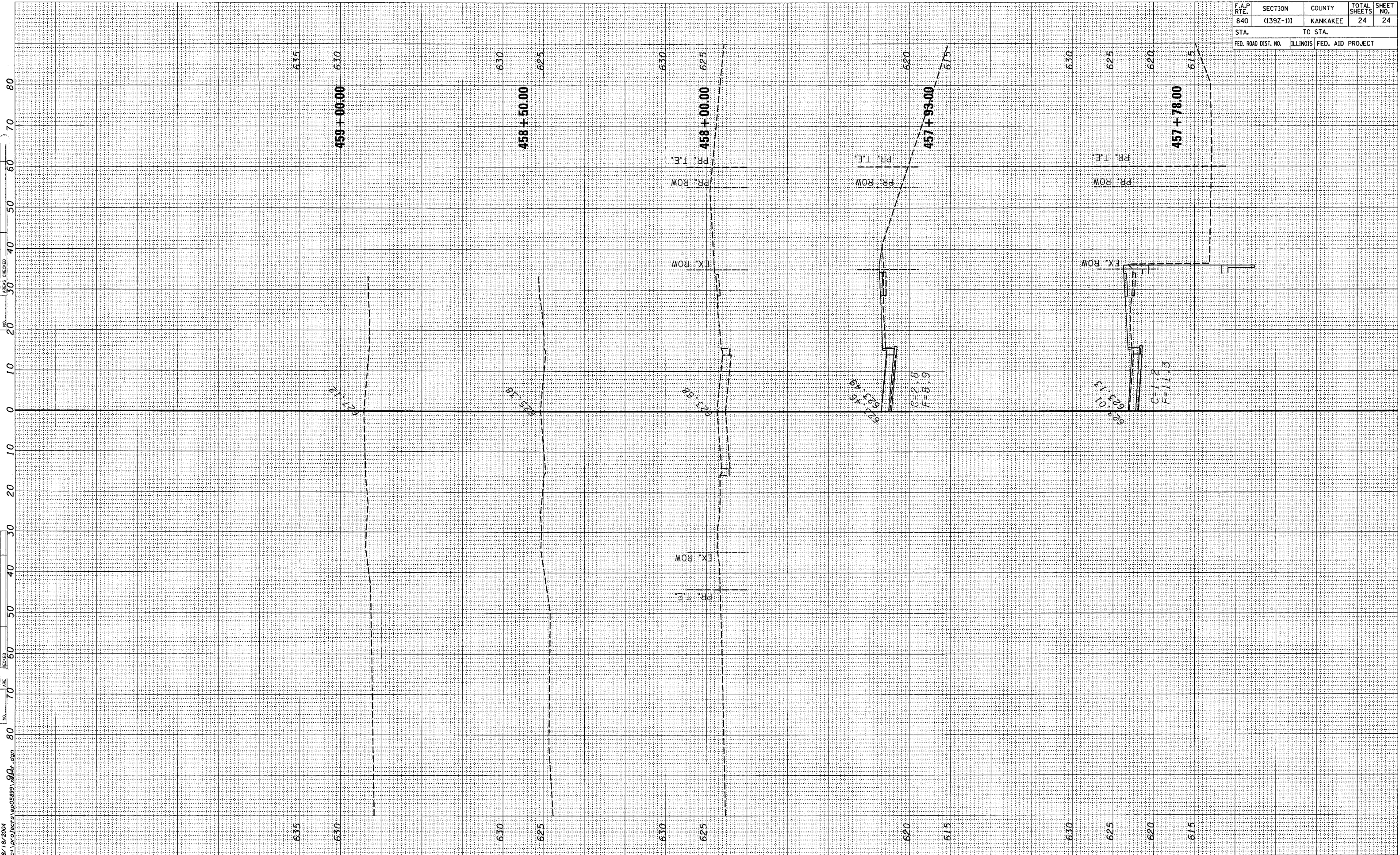


F.A.P. RTE.	SECTION	COUNTY	TOTAL SHEETS	SHEET NO.
840	(139Z-1)I	KANKAKEE	24	23
STA.	TO STA.			
FED. ROAD DIST. NO.	ILLINOIS	FED. AID PROJECT		

8/18/2004
 c:\p0\tech\ep05899\904.dgn
 SURVEY NOTE BOOK AREA REVISIONS
 SURVEY NOTE BOOK AREA REVISIONS
 SURVEY NOTE BOOK AREA REVISIONS



F.A.P. RTE.	SECTION	COUNTY	TOTAL SHEETS	SHEET NO.
840	(139Z-1)I	KANKAKEE	24	24
STA.		TO STA.		
FED. ROAD DIST. NO.		ILLINOIS FED. AID PROJECT		



8/18/2004
c:\p\o\ecrs\p05893\904.dgn