

STATE OF ILLINOIS  
DEPARTMENT OF TRANSPORTATION  
DIVISION OF HIGHWAYS

**PROPOSED  
HIGHWAY PLANS**

FAP ROUTE 17 (IL 64)  
SECTION (125, H) I  
PROJECT ACHSIP - 0017 (133)  
**SHOULDER WIDENING & RUMBLE STRIPS**  
DEKALB COUNTY

C-93-010-16

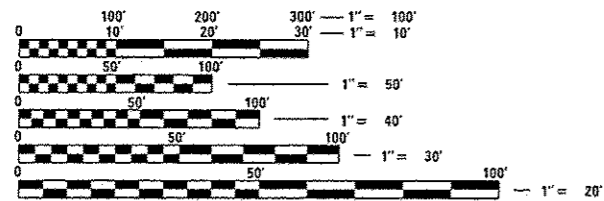
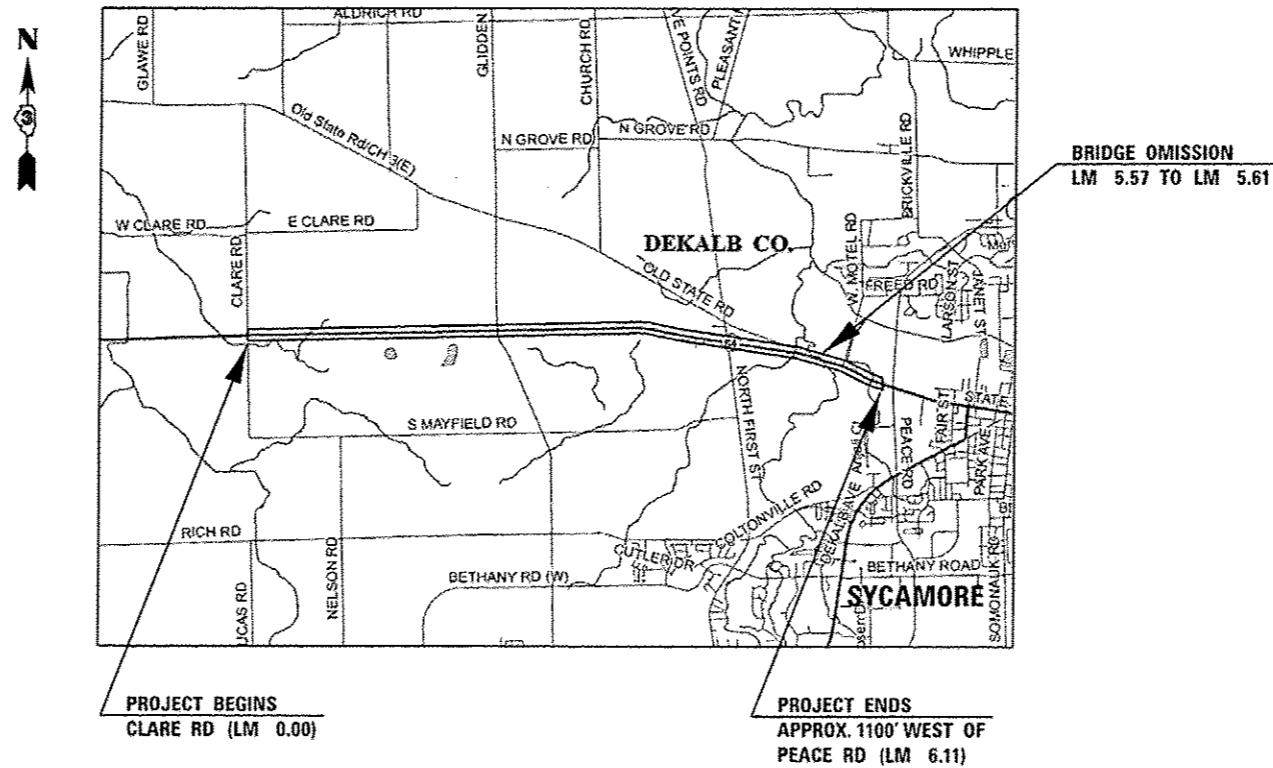
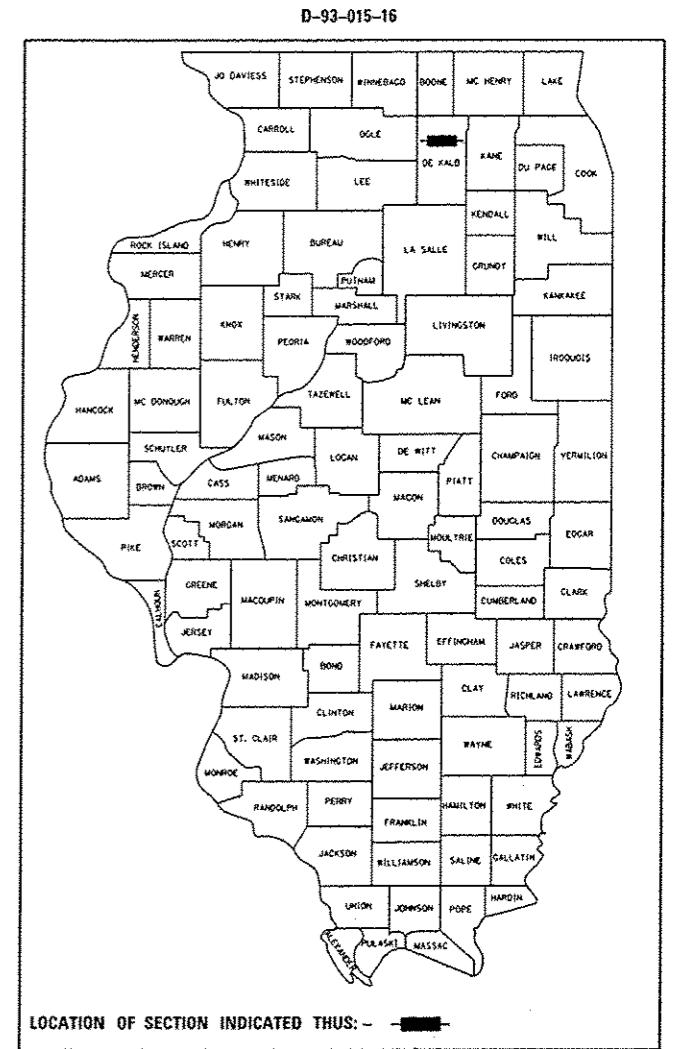
F.A.P. RTE.	SECTION	COUNTY	TOTAL SHEETS	SHEET NO.
17	(125, H) I	DEKALB	6	1
		ILLINOIS	CONTRACT NO. 66F05	

INDEX OF SHEETS

- 1 COVER SHEET
- 2 GENERAL NOTES
- 3 SUMMARY OF QUANTITIES
- 4 TYPICAL SECTIONS
- 5 SCHEDULES
- 6 DETAILS

STANDARDS

- 000001-06 STANDARD SYMBOLS, ABBREVIATIONS AND PATTERNS
- 001006 DECIMAL OF AN INCH AND OF A FOOT
- 408201-01 MAILBOX TURNOUT
- 482001-02 HMA SHOULDER ADJACENT TO FLEXIBLE PAVEMENT
- 482008-03 HMA SHOULDER ADJACENT TO RIGID PAVEMENT
- 642006 SHOULDER RUMBLE STRIPS, 8 INCH
- 701306-03 LANE CLOSURE, 2L, 2W, SLOW MOVING OPERATIONS DAY ONLY, FOR SPEEDS ≥ 45 MPH
- 701311-03 LANE CLOSURE, 2L, 2W, MOVING OPERATIONS - DAY ONLY
- 701326-04 LANE CLOSURE, 2L, 2W, PAVEMENT WIDENING, FOR SPEEDS ≥ 45 MPH
- 701901-05 TRAFFIC CONTROL DEVICES



FULL SIZE PLANS HAVE BEEN PREPARED USING STANDARD ENGINEERING SCALES. REDUCED SIZED PLANS WILL NOT CONFORM TO STANDARD SCALES. IN MAKING MEASUREMENTS ON REDUCED PLANS, THE ABOVE SCALES MAY BE USED.

J.U.L.I.E.  
JOINT UTILITY LOCATION INFORMATION FOR EXCAVATION  
1-800-892-0123  
OR 811

PROJECT ENGINEER: JOE KANNEL, P.E.  
UNIT CHIEF: MARC BUDZYNSKI  
DISTRICT 3 NO. (815) 434-6131  
CONTRACT NO. 66F05

GROSS LENGTH = 32,261 FT. = 6.11 MILES  
NET LENGTH = 32,050 FT. = 6.07 MILE

STATE OF ILLINOIS  
DEPARTMENT OF TRANSPORTATION  
DIVISION OF HIGHWAYS

SUBMITTED January 28 20 16  
Paul Coetzee  
DEPUTY DIRECTOR OF HIGHWAYS, REGION ENGINEER

March 18 20 16  
Muneem M. Addis P.E.  
ENGINEER OF DESIGN AND ENVIRONMENT

March 18 20 16  
Omer Osman P.E.  
DIRECTOR OF HIGHWAYS, CHIEF ENGINEER

**PRINTED BY THE AUTHORITY  
OF THE STATE OF ILLINOIS**

GENERAL NOTES

THE THICKNESS OF HMA SHOWN ON THE PLANS IS THE NOMINAL THICKNESS. DEVIATIONS FROM THE NOMINAL THICKNESS WILL BE PERMITTED WHEN SUCH DEVIATIONS OCCUR DUE TO IRREGULARITIES IN THE EXISTING SURFACE OR BASE ON WHICH THE HMA IS PLACED.

THE HMA SURFACE OF ALL MAILBOX TURNOUTS, PRIVATE ENTRANCES, COMMERCIAL ENTRANCES, AND SIDE ROADS SHALL BE MADE NEATLY, IN A WORKMANLIKE MANNER, AND SHALL ACCURATELY CONFORM TO THE SHAPES AND DIMENSIONS SHOWN ON THE PLAN DETAILS. IF REQUIRED BY THE ENGINEER, THE CONTRACTOR SHALL SAW CUT THE HMA SURFACE TO CONFORM TO THE SHAPES AND DIMENSIONS SHOWN ON THE PLAN DETAILS. THIS WORK WILL BE INCLUDED IN THE COST OF THE HMA SURFACE.

THE ENGINEER WILL BE THE SOLE JUDGE CONCERNING CURING TIME FOR THE VARIOUS HMA LIFTS.

FOR STABILIZATION, ALL TYPE III BARRICADES WILL REQUIRE A MINIMUM OF FOUR SAND BAGS PER BARRICADE.

SEEDING WILL NOT BE PERMITTED AT ANY TIME WHEN THE GROUND IS FROZEN, WET, OR IN AN UNTILLABLE CONDITION. LOCATIONS TO BE SEEDED WILL BE DETERMINED BY THE ENGINEER.

ALL EXCAVATED MATERIAL, WHICH INCLUDES DIGGING OR GRADING OF ANY SOIL OR FILL MATERIAL, WITH THE EXCEPTION OF AGGREGATE FILLS, MUST BE INCORPORATED WITHIN THE IDOT RIGHT OF WAY DUE TO ENVIRONMENTAL DOCUMENTATION REQUIREMENTS.

ANY REFERENCE TO A STANDARD IN THESE PLANS SHALL BE INTERPRETED TO MEAN THE EDITION AS INDICATED BY THE SUBNUMBER SHOWN IN THE LIST OF STANDARDS OR THE COPY INCLUDED IN THESE PLANS.

THE FOLLOWING RATES OF APPLICATION HAVE BEEN USED IN CALCULATING PLAN QUANTITIES:

HMA RESURFACING	112	LBS / SQ YD / IN
-----------------	-----	------------------

THE CONTRACTOR SHALL CONTACT JULIE AT LEAST 48 HOURS PRIOR TO EXCAVATION TO DETERMINE WHICH UTILITIES ARE IN THE AREA.

COMMITMENTS:

LOCATION(S):	LM 0.00 TO LM 6.11		
MIXTURE USE(S):	SHOULDER BOTTOM LIFT(S)	SHOULDER TOP LIFT (2")	MAILBOX TURNOUTS
BINDER GRADE (PG):	PG 64-22	PG 64-22	PG 64-22
DESIGN AIR VOIDS:	4.0% @ N50	4.0% @ N50	4.0% @ N50
MIXTURE COMPOSITION: (MIXTURE GRADATION)	IL-19.0 FG	IL-9.5 FG	IL-9.5 FG
FRICTION AGGREGATE:	-	MIXTURE C	MIXTURE C
MIXTURE WEIGHT:	112.0 LB/SY/IN	112.0 LB/SY/IN	112.0 LB/SY/IN
QUALITY MANAGEMENT PROGRAM:	OC/OA	OC/OA	OC/OA
SUBLOT SIZE:	N/A	N/A	N/A
DENSITY TEST METHOD:	CORES	% GROWTH CURVE	-

STATE OF ILLINOIS  
DEPARTMENT OF TRANSPORTATION  
DISTRICT THREE  
AS BUILT INFORMATION

\_\_\_\_\_  
SUPERVISING CONSTRUCTION FIELD ENGINEER

\_\_\_\_\_  
RESIDENT ENGINEER / TECHNICIAN

START & END DATES  
OF CONSTRUCTION:

INSPECTORS:

STATE OF ILLINOIS  
DEPARTMENT OF TRANSPORTATION  
DISTRICT THREE

PREPARED BY: Tom Beaulieu  
DISTRICT STUDIES & PLANS ENGINEER

DATE: January 28, 2016

EXAMINED BY: [Signature]  
DISTRICT CONSTRUCTION ENGINEER

Wanda J. Phillips  
DISTRICT MATERIALS ENGINEER

[Signature]  
DISTRICT OPERATIONS ENGINEER

STATE OF ILLINOIS  
DEPARTMENT OF TRANSPORTATION

GENERAL NOTES

F.A.P. RTE.	SECTION	COUNTY	TOTAL SHEETS	SHEET NO.
17	(125, H) I	DEKALB	6	2
CONTRACT NO. 66F05				
ILLINOIS FED. AID PROJECT				

FILE NAME :	USER NAME :	DESIGNED :	REVISED :
p:\1\1004EBID\INTEG.illinois.gov\FWID001\Documents\1007 Offices\District 3\Projects\0366\Drawings\0366F05-shr-details.dgn	budzynakim	-	-
PLOT SCALE :	CHECKED :	REVISED :	REVISED :
100.0000' / in.	-	-	-
PLOT DATE :	DATE :	REVISED :	REVISED :
1/29/2016	-	-	-

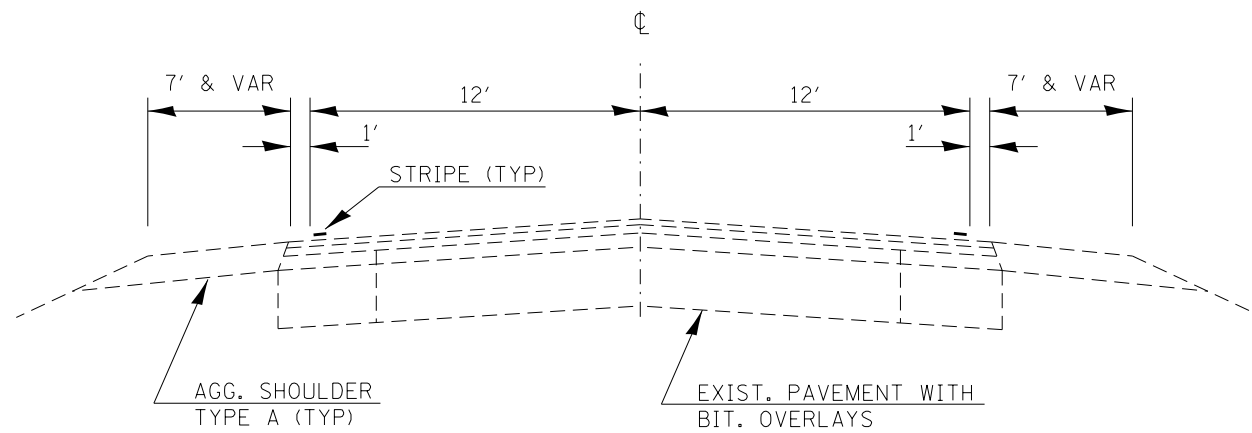
SCALE: SHEET OF SHEETS STA. TO STA.

CODE NO.	ITEM	UNIT	TOTAL QUANTITY	CONSTR. CODE	
				90% FEDERAL 10% STATE	
				ROADWAY	
				0021	RURAL
20200600	EXCAVATING AND GRADING EXISTING SHOULDER	UNIT	641		641
40600290	BITUMINOUS MATERIALS (TACK COAT)	POUND	13055		13055
40800050	INCIDENTAL HOT-MIX ASPHALT SURFACING	TON	58.3		58.3
44000157	HOT-MIX ASPHALT SURFACE REMOVAL, 2"	SO YD	520		520
48203029	HOT-MIX ASPHALT SHOULDERS, 8"	SO YD	28489		28489
64200108	SHOULDER RUMBLE STRIPS, 8 INCH	FOOT	64100		64100
67100100	MOBILIZATION	LSUM	1.0		1.0
70100460	TRAFFIC CONTROL AND PROTECTION, STANDARD 701306	LSUM	1.0		1.0
70100500	TRAFFIC CONTROL AND PROTECTION, STANDARD 701326	LSUM	1.0		1.0
70103815	TRAFFIC CONTROL SURVEILLANCE	CAL DA	5		5
* 78001110	PAINT PAVEMENT MARKING - LINE 4"	FOOT	128200		128200
X0800001	SHOULDER REMOVAL (SPECIAL)	SO YD	28489		28489
Z0030850	TEMPORARY INFORMATION SIGNING	SO FT	42		42

13

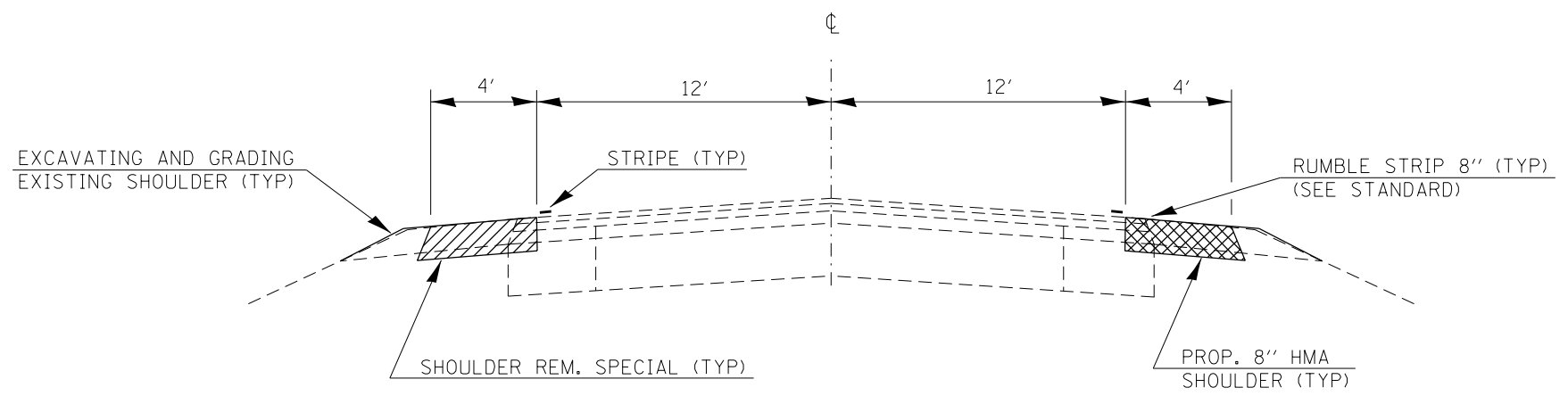
\* SPECIALTY ITEM

FILE NAME =	USER NAME = budzynskm	DESIGNED =	REVISED =	<b>STATE OF ILLINOIS DEPARTMENT OF TRANSPORTATION</b>	<b>SUMMARY OF QUANTITIES</b>	F.A.P. RTE.	SECTION	COUNTY	TOTAL SHEETS	SHEET NO.
pw\11084818\INTEC\Illinois.gov\PIW1001\00	Documents\DOT Offices\District 3\Projects\036	DRAWING DATA\8366F85-shr-details.dgn	REVISED =			17	425, H 1	DEKALB	6	3
PLOT SCALE = 1/8" = 1' / in.	CHECKED =	REVISED =				CONTRACT NO. 66F05				
PLOT DATE = 2/1/2016	DATE =	REVISED =				ILLINOIS FED. AID PROJECT				
				SCALE:	SHEET OF SHEETS	STA.	TO STA.			



**EXISTING TYPICAL SECTION**

LM 0.00 TO LM 6.11



**PROPOSED TYPICAL SECTION**

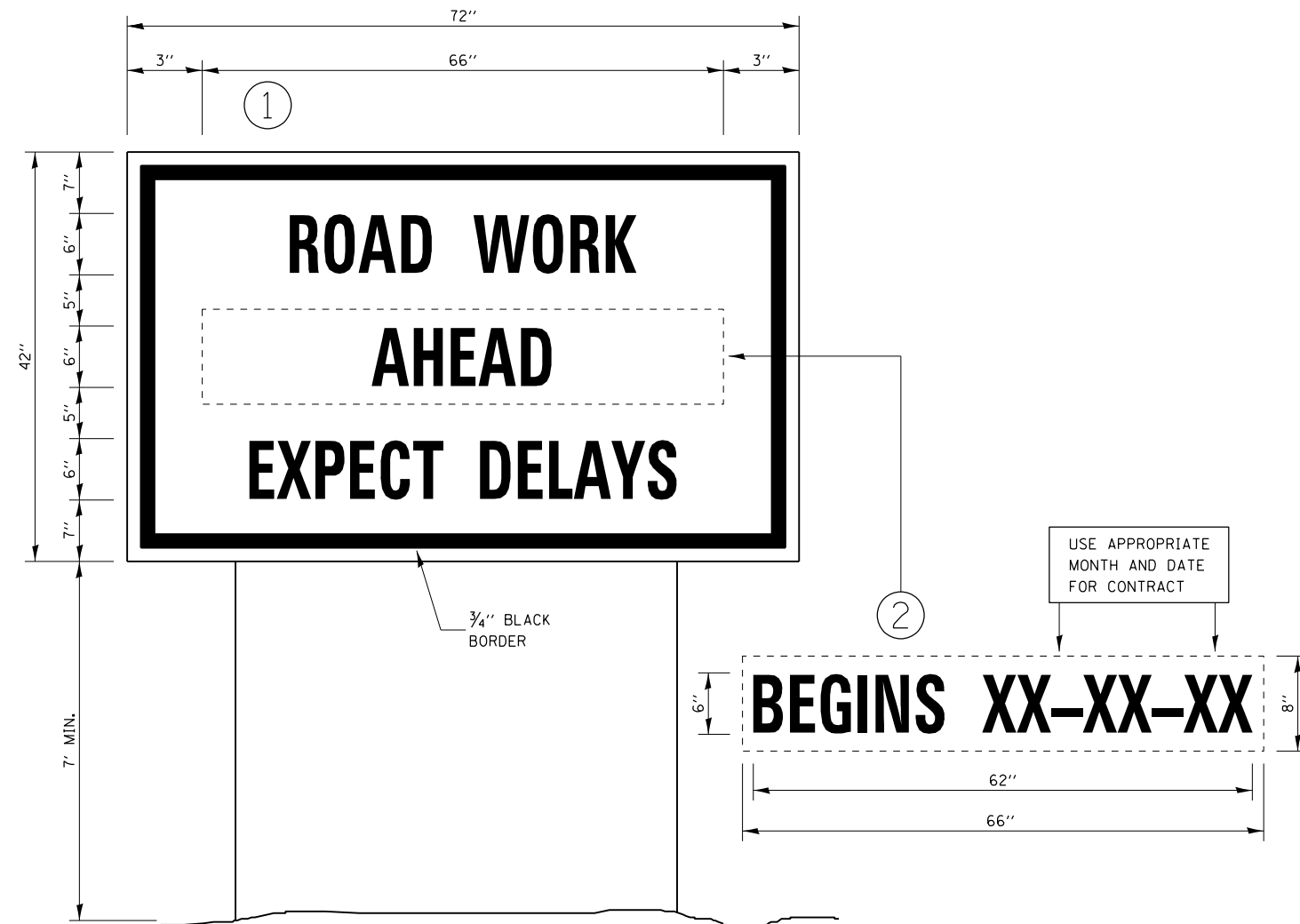
LM 0.00 TO LM 6.11

FILE NAME =	USER NAME = budzynskim	DESIGNED -	REVISED -	<b>STATE OF ILLINOIS DEPARTMENT OF TRANSPORTATION</b>	<b>TYPICAL SECTIONS</b>			F.A.P. RTE.	SECTION	COUNTY	TOTAL SHEETS	SHEET NO.
p:\11\084EBIDINTEG.illinois.gov\PIWIDOT\Documents\DOT Offices\District 3\Projects\0366\DRAWING\05-shr-details.dgn		CHECKED -	REVISED -					17	(125, H) I	DEKALB	6	4
PLOT SCALE = 100.0000' / 1in.		DATE -	REVISED -		CONTRACT NO. 66F05			ILLINOIS FED. AID PROJECT				
PLOT DATE = 2/1/2016					SCALE:	SHEET	OF	SHEETS	STA.	TO	STA.	

SHOULDER REMOVAL & REPLACEMENT SCHEDULE								
LOCATION			LENGTH	SHOULDER REMOVAL (SPECIAL)	HMA SHOULDERS 8"	BIT MTLs (TACK COAT)	SHOULDER RUMBLE STRIPS 8"	PAINT PVMT MARKING WHITE 4"
L.M.	TO	L.M.	FOOT	SQ YD	SQ YD	POUND	FOOT	FOOT
0.00	TO	5.57	29410	26142	26142	11764	58820	117640
BRIDGE OMISSION LM 5.57 TO LM 5.61								
5.61	TO	6.11	2640	2347	2347	1056	5280	10560
<b>TOTAL</b>			<b>32050</b>	<b>28489</b>	<b>28489</b>	<b>12820</b>	<b>64100</b>	<b>128200</b>

MAILBOX TURNOUT REMOVAL & REPLACEMENT SCHEDULE					
L.M. / SIDE		AREA	HMA SURF REMOVAL 2"	INCIDENTAL HMA SURF 2"	BIT MTLs PRIME COAT
		SQ YD	SQ YD	TON	POUND
0.09	LT	24	24	2.69	10.8
0.17	LT	15	15	1.68	6.8
0.42	LT	15	15	1.68	6.8
0.79	LT	54	54	6.05	24.3
1.06	LT	15	15	1.68	6.8
1.23	LT	15	15	1.68	6.8
1.49	LT	19	19	2.13	8.6
1.65	LT	24	24	2.69	10.8
1.90	LT	19	19	2.13	8.6
2.09	LT	27	27	3.02	12.2
2.19	LT	15	15	1.68	6.8
2.88	LT	15	15	1.68	6.8
3.08	LT	15	15	1.68	6.8
3.11	LT	38	38	4.26	17.1
3.61	LT	15	15	1.68	6.8
3.94	LT	15	15	1.68	6.8
4.18	LT	27	27	3.02	12.2
4.22	LT	35	35	3.92	15.8
4.42	RT	15	15	1.68	6.8
4.50	LT	24	24	2.69	10.8
5.72	LT	48	48	5.38	21.6
5.74	LT	15	15	1.68	6.8
5.92	LT	16	16	1.79	7.2
<b>TOTAL</b>		<b>520</b>	<b>520</b>	<b>58.3</b>	<b>235</b>

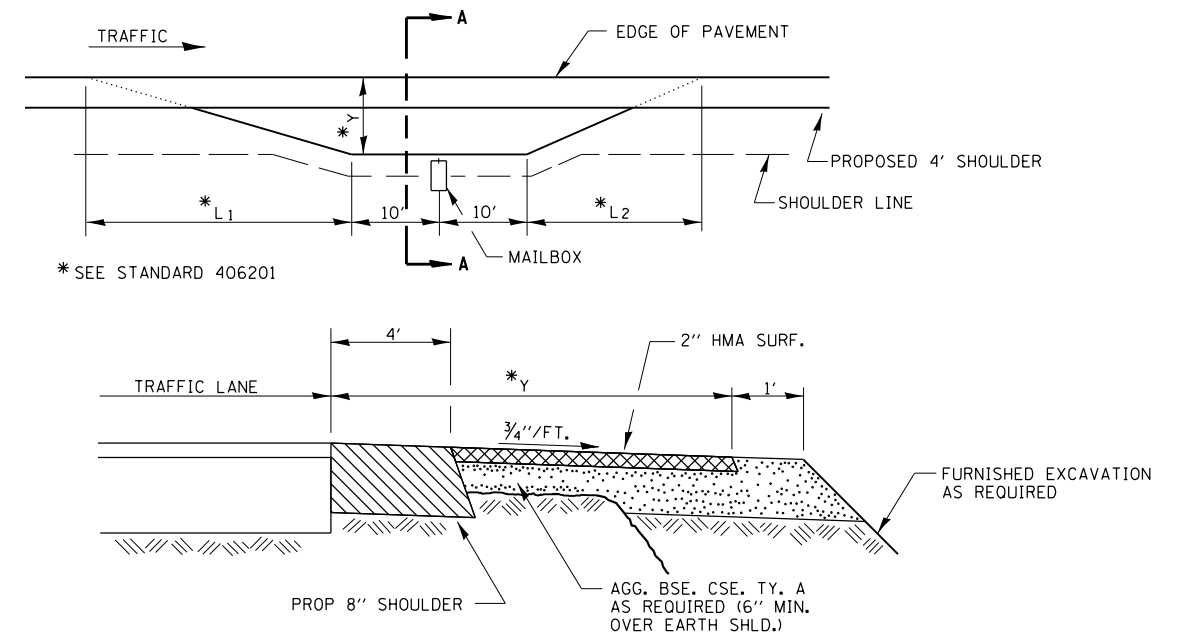
The first 4 feet of the MBTO adjacent to the traveled way is paid as Shoulder Removal (Special) and HMA Shoulders 8"  
The remaining area of the MBTO is paid as HMA Surface Removal 2" and Incidental HMA Surface 2"



### TEMPORARY INFORMATION SIGNING

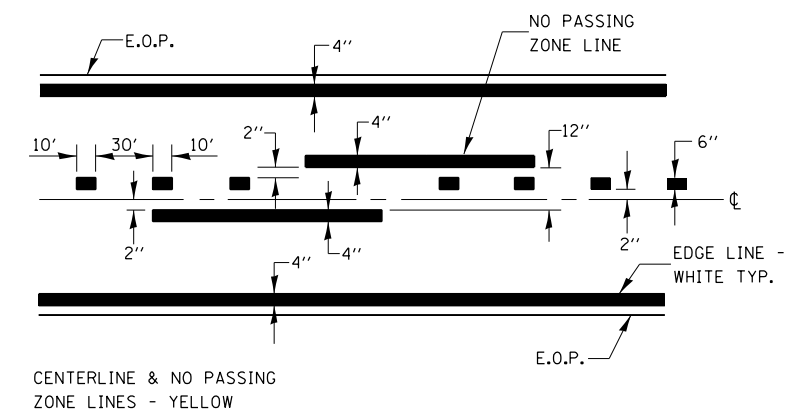
#### NOTES:

1. USE 6" D BLACK LETTERING ON FLOURESENT ORANGE BACKGROUND.
2. ERECT SIGNS AT LOCATIONS IN ADVANCE OF THE "ROAD CONSTRUCTION AHEAD" SIGNS AS DIRECTED BY THE ENGINEER.
3. ERECT SIGN ① WITH INSTALLED PANEL ② A MINIMUM OF ONE WEEK PRIOR TO THE START OF THE LANE CLOSURE.
4. REMOVE PANEL ② ON THAT DATE.
5. SEE SPECIAL PROVISION "TEMPORARY INFORMATION SIGNING" FOR ADDITIONAL INFORMATION.
6. WILL BE PAID FOR PER SQ FT AS "TEMPORARY INFORMATION SIGNING". EACH SIGN = 21 SQ FT AND THE DATE PANEL ② WILL NOT BE MEASURED SEPARATELY FOR PAYMENT.



### SECTION A-A

### RURAL MAILBOX TURNOUT DETAILS



### PAVEMENT MARKING

FILE NAME =	USER NAME = budzynskim	DESIGNED -	REVISED -	<b>STATE OF ILLINOIS DEPARTMENT OF TRANSPORTATION</b>	<b>DETAILS</b>			F.A.P. RTE.	SECTION	COUNTY	TOTAL SHEETS	SHEET NO.
p:\11\084EBIDINTEG.illinois.gov\PIWIDOT\Documents\IDOT Offices\District 3\Projects\0366\Drawings\05-shd-details.dgn	PLOT SCALE = 100.0000' / 1in.	CHECKED -	REVISED -					17	(125, H) I	DEKALB	6	6
PLOT DATE = 2/1/2016	DATE -	REVISED -	REVISED -		CONTRACT NO. 66F05							
					SCALE:	SHEET	OF	SHEETS	STA.	TO	STA.	ILLINOIS FED. AID PROJECT