

STATE OF ILLINOIS
DEPARTMENT OF TRANSPORTATION

DIVISION OF HIGHWAYS
**PROPOSED
HIGHWAY PLANS**

FAI ROUTE 55 (I-55)
SECTION (32-2, 3) I-1, (53-1, 2) I
PROJECT ACHSIP-0055 (451)
PAVEMENT GROOVING
LIVINGSTON & GRUNDY COUNTIES

C-93-011-16

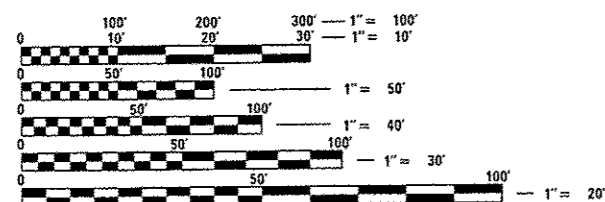
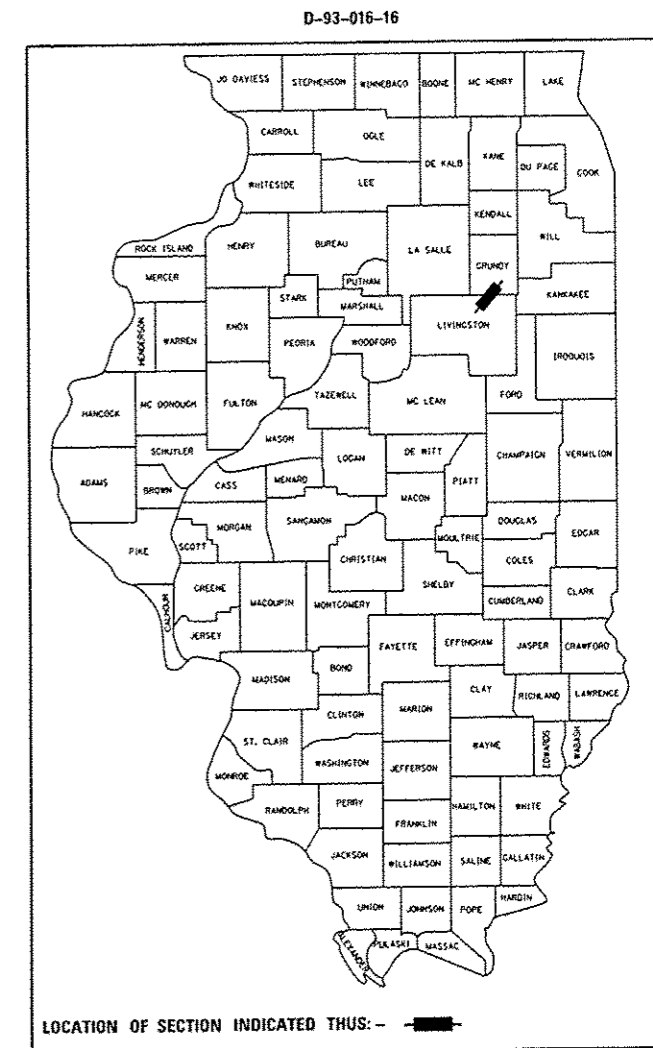
F.A.I. RTE.	SECTION	COUNTY	TOTAL SHEETS	SHEET NO.
55	(32-2, 3) I-1, (53-1, 2) I	ILLINOIS	5	1
CONTRACT NO. 66F06			*LIVINGSTON & GRUNDY	

INDEX OF SHEETS

- 1 COVER SHEET
- 2 GENERAL NOTES
- 3 SUMMARY OF QUANTITIES
- 4 TYPICAL SECTION AND SCHEDULE
- 5 STANDARD 701400 (SPECIAL)

STANDARDS

- 000001-06 STANDARD SYMBOLS, ABBREVIATIONS AND PATTERNS
- 001006 DECIMAL OF AN INCH AND OF A FOOT
- 701406-10 LANE CLOSURE, FREEWAY/EXPRESSWAY, DAY OPERATIONS ONLY
- 701411-09 LANE CLOSURE, MULTILANE, AT ENTRANCE OR EXIT RAMP
- 701426-08 LANE CLOSURE, MULTILANE INTERMITTENT OR MOVING OPERATION, FOR SPEEDS ≥ 45 MPH
- 701901-03 TRAFFIC CONTROL DEVICES

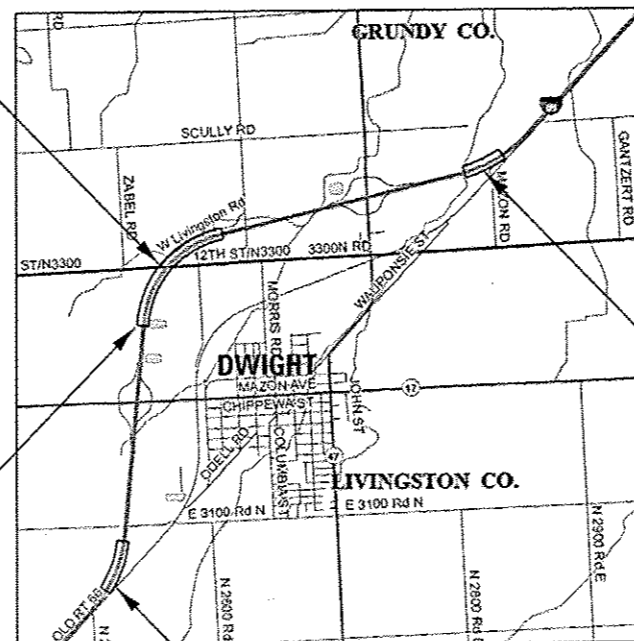


FULL SIZE PLANS HAVE BEEN PREPARED USING STANDARD ENGINEERING SCALES. REDUCED SIZED PLANS WILL NOT CONFORM TO STANDARD SCALES. IN MAKING MEASUREMENTS ON REDUCED PLANS, THE ABOVE SCALES MAY BE USED.

J.U.L.I.E.
JOINT UTILITY LOCATION INFORMATION FOR EXCAVATION
1-800-892-0123
OR 811

LIVINGSTON / GRUNDY CO. LINE
STA 304 + 46

LOCATION NO. 2
STA 275 + 50 TO STA 331 + 72
JUST NORTH OF HMA / PCC JOINT



LOCATION NO. 3
STA 439 + 79 TO STA 462 + 00
JUST EAST OF STRUCTURE

LOCATION NO. 1
STA 164 + 06 TO STA 187 + 06
1400' NORTH OF HMA / PCC JOINT

GROSS LENGTH = 29,794 FT. = 5.643 MILES
NET LENGTH = 10,143 FT. = 1.921 MILES

PROJECT ENGINEER: JOE KANNEL, P.E.
UNIT CHIEF: MARC BUDZYNSKI
DISTRICT 3 NO. (815) 434-6131
CONTRACT NO. 66F06

INTERSTATE
2013 ADT = 19,000
P.V. = 68.8% S.U. = 3.8% M.U. = 27.4%

STATE OF ILLINOIS
DEPARTMENT OF TRANSPORTATION
DIVISION OF HIGHWAYS

SUBMITTED January 28, 2016

Paul Coste
DEPUTY DIRECTOR OF HIGHWAYS, REGION ENGINEER

Maureen M. Addis
ENGINEER OF DESIGN AND ENVIRONMENT

Omer Osman
DIRECTOR OF HIGHWAYS, CHIEF ENGINEER

PRINTED BY THE AUTHORITY
OF THE STATE OF ILLINOIS

GENERAL NOTES

FOR STABILIZATION, ALL TYPE III BARRICADES WILL REQUIRE A MINIMUM OF FOUR SAND BAGS PER BARRICADE.

ANY REFERENCE TO A STANDARD IN THESE PLANS SHALL BE INTERPRETED TO MEAN THE EDITION AS INDICATED BY THE SUBNUMBER SHOWN IN THE LIST OF STANDARDS OR THE COPY INCLUDED IN THESE PLANS.

COMMITMENTS:

STATE OF ILLINOIS
DEPARTMENT OF TRANSPORTATION
DISTRICT THREE
AS BUILT INFORMATION

SUPERVISING CONSTRUCTION FIELD ENGINEER

RESIDENT ENGINEER / TECHNICIAN

START & END DATES
OF CONSTRUCTION:

INSPECTORS:

STATE OF ILLINOIS
DEPARTMENT OF TRANSPORTATION
DISTRICT THREE

PREPARED BY: *Don Benil*
DISTRICT STUDIES & PLANS ENGINEER

DATE: January 28, 2016

EXAMINED BY: *Subir D. Das*
DISTRICT CONSTRUCTION ENGINEER

Wayne J. Phillips
DISTRICT MATERIALS ENGINEER

James A. Bushman
DISTRICT OPERATIONS ENGINEER

STATE OF ILLINOIS
DEPARTMENT OF TRANSPORTATION

GENERAL NOTES

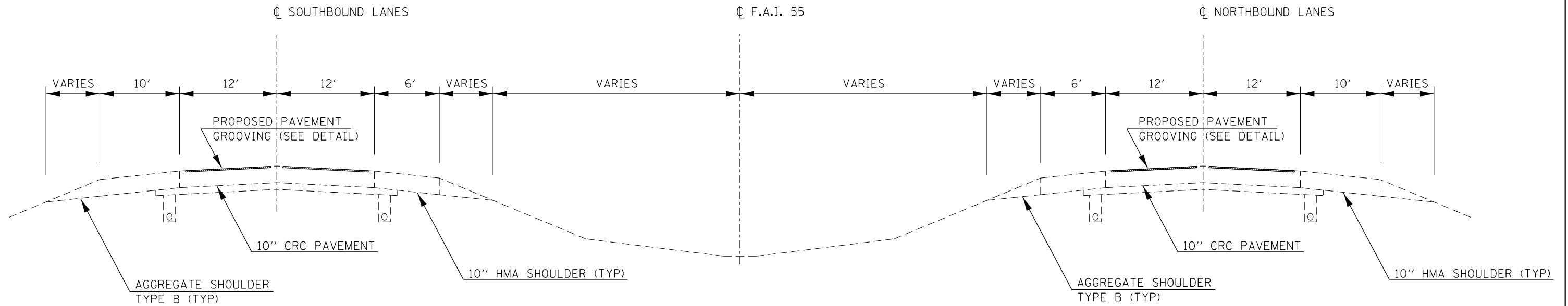
*LIVINGSTON & GRUNDY

FILE NAME *	USER NAME * budzynekim	DESIGNED -	REVISED -	STATE OF ILLINOIS DEPARTMENT OF TRANSPORTATION	GENERAL NOTES	F.A.I. RTE.	SECTION	COUNTY	TOTAL SHEETS	SHEET NO.	
p:\IL0046810\INTEC\Illinois.gov\PI\DOT\Documents\DOT Offices\District 3\Projects\0366\DRAWING\0366F05-sht-details.dgn		CHECKED -	REVISED -			95	(32-2, 3) 1-1, (53-1, 2) 1	*	5	2	
PLOT SCALE * 1/8"=1'-0"		DATE -	REVISED -			CONTRACT NO. 66F06					
PLOT DATE * 1/29/2016						SCALE:	SHEET	OF	SHEETS	STA.	TO STA.

				90% FEDERAL 10% STATE	
				CONSTRUCTION CODE	
CODE NO.	ITEM	UNIT	TOTAL QUANTITY	LIVINGSTON CO.	GRUNDY CO.
				ROADWAY	ROADWAY
				0021	0021
				RURAL	RURAL
67100100	MOBILIZATION	LSUM	1.0	0.5	0.5
70100420	TRAFFIC CONTROL AND PROTECTION, STANDARD 701411	EACH	2	1	1
70106800	CHANGEABLE MESSAGE SIGN	CAL MO	1.0	0.5	0.5
X0326880	MESSAGE BOARD VEHICLE DRIVER	HOUR	32	16	16
X0326907	PORTABLE, VEHICLE MOUNTED, CHANGEABLE MESSAGE SIGN	CAL MO	1.0	0.5	0.5
X7010410	SPEED DISPLAY TRAILER	CAL MO	1.0	0.5	0.5
X7010600	TRAFFIC CONTROL AND PROTECTION, STANDARD 701406, SPECIAL	LSUM	1.0	0.5	0.5
Z0037300	PAVEMENT GROOVING	SO YD	48845	25022	23823

FILE NAME *	USER NAME * budzgnakm	DESIGNED -	REVISED -	STATE OF ILLINOIS DEPARTMENT OF TRANSPORTATION	SUMMARY OF QUANTITIES	F.A.I. RTE.	SECTION	COUNTY	TOTAL SHEETS	SHEET NO.	
pw\11084810\INTEG\Illinois.gov\PI00T\Documents\DOT Offices\District 3\Projects\036	DRAWN	REVISED -	REVISED -			55	132-2, 31 1-1, 153-1, 21 1	*	5	3	
PLOT SCALE = 100.0000' / 1"	CHECKED -	REVISED -	REVISED -			CONTRACT NO. 66F06					
PLOT DATE * 2/1/2016	DATE -	REVISED -	REVISED -			SCALE:	SHEET	OF	SHEETS	STA.	TO STA.

*LIVINGSTON & GRUNDY



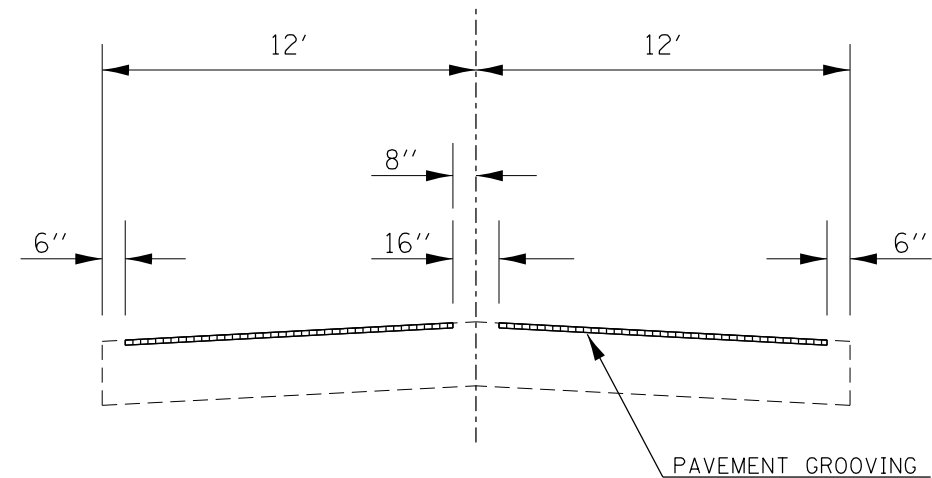
PROPOSED TYPICAL SECTION

STA 164+06 TO STA 187+06
 STA 275+50 TO STA 331+72
 STA 439+79 TO STA 462+00

NOTE: THE MAXIMUM SUPERELEVATION RATES FOR THE NORTHBOUND AND SOUTHBOUND LANES ARE THE FOLLOWING:

0.033 FT/FT FOR STA 164+06 TO STA 187+06
 0.041 FT/FT FOR STA 275+50 TO STA 331+72
 0.033 FT/FT FOR STA 439+79 TO STA 462+00

PAVEMENT GROOVING SCHEDULE						
LOCATION		LENGTH	WIDTH	AREA	PAVEMENT GROOVING	
STA	TO STA	FOOT	FOOT	SQ YD	SQ YD	
LIVINGSTON COUNTY						
NORTHBOUND LANES						
164+06	TO 187+06	2300	21.67	5538	5538	
275+50	TO 304+46	2896	21.67	6973	6973	
SOUTHBOUND LANES						
164+06	TO 187+06	2300	21.67	5538	5538	
275+50	TO 304+46	2896	21.67	6973	6973	
LIVINGSTON COUNTY SUBTOTAL		10392		25022	25022	
GRUNDY COUNTY						
NORTHBOUND LANES						
304+46	TO 331+72	2726	21.67	6564	6564	
439+66	TO 462+00	2234	21.67	5379	5379	
SOUTHBOUND LANES						
304+46	TO 331+72	2726	21.67	6564	6564	
439+92	TO 462+00	2208	21.67	5316	5316	
GRUNDY COUNTY SUBTOTAL		9894		23823	23823	
TOTAL		20286		48845	48845	



PROPOSED PAVEMENT GROOVING DETAIL (NTS)

FILE NAME =	USER NAME = budzynskim	DESIGNED -	REVISED -
p:\11\084EBID\INTEG.illinois.gov\PIWIDOT\Documents\IDOT Offices\District 3\Projects\0366\Drawings\06-shd-details.dgn		CHECKED -	REVISED -
		DATE -	REVISED -

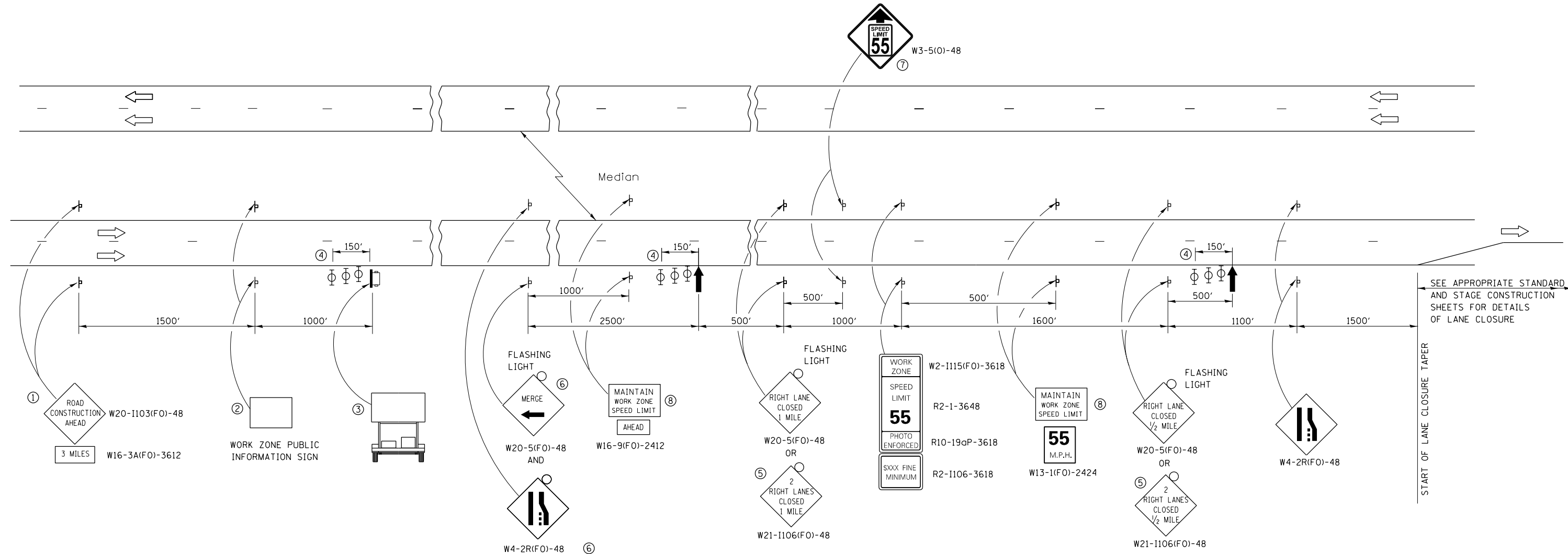
**STATE OF ILLINOIS
 DEPARTMENT OF TRANSPORTATION**

TYPICAL SECTION AND SCHEDULE

SCALE: SHEET OF SHEETS STA. TO STA.

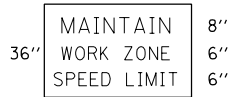
F.A.I. R.T.E.		SECTION	COUNTY	TOTAL SHEETS	SHEET NO.
55	(32-2, 3)	I-1, (53-1, 2)		5	4
CONTRACT NO. 66F06				ILLINOIS FED. AID PROJECT	

*LIVINGSTON & GRUNDY



- ① THE ROAD CONSTRUCTION AHEAD SIGN SHALL BE LOCATED 3 MILES IN ADVANCE OF THE PROJECT LIMITS.
- ② THE MESSAGE AND SIZE OF THE WORK ZONE PUBLIC INFORMATION SIGN SHALL BE AS SPECIFIED BY THE DEPARTMENT.
- ③ TO BE PLACED IN THE MEDIAN WHEN FEASIBLE. THE MESSAGE BOARD SHALL BE USED TO DISPLAY STATUS OF LANES WITHIN THE PROJECT. THE PRIMARY MESSAGES SHALL BE:
"RIGHT LANE CLOSED" / " x MILES AHEAD"
"LEFT LANE CLOSED" / " x MILES AHEAD"
"ALL LANES OPEN"
- ④ THREE, TYPE II BARRICADES, DRUMS, OR VERTICAL BARRICADES AT 50' CENTERS.
- ⑤ THIS SIGN SHALL BE USED WHEN 2 LANES ARE CLOSED.
- ⑥ WHEN THE LEFT LANE IS CLOSED, SWITCH THESE TWO SIGNS AND THE DIRECTION OF THE MERGE ARROW.
- ⑦ THIS SIGN SHALL ONLY BE USED IF THE EXISTING SPEED LIMIT IS GREATER THAN 65 MPH.

⑧ 48"x36" FLUORESCENT ORANGE SIGN WITH BLACK LETTERS.
48"



- ↑ ARROW BOARD
- ☐ PORTABLE CHANGEABLE MESSAGE SIGN
- ⊥ SIGN
- ⊕ TYPE II BARRICADE, DRUM, OR VERTICAL BARRICADE WITH MONODIRECTIONAL FLASHING LIGHT

GENERAL NOTE:

THIS STANDARD IS USED WHERE AT ANY TIME A LANE IS CLOSED ON A FREEWAY/EXPRESSWAY.

WHEN THE LEFT LANE IS CLOSED, LEFT LANE CLOSED SIGNS SHALL BE SUBSTITUTED FOR THE RIGHT LANE CLOSED SIGNS.

THE FIRST TWO SIGNS AND THE MESSAGE BOARD ARE STATIONARY. THE OTHER SIGNS AND ARROWBOARDS SHALL BE MOVED AS NECESSARY TO MAINTAIN THE REQUIRED DISTANCE FROM THE START OF THE LANE CLOSURE TAPER(S).

SEE SPECIAL PROVISIONS.

ALL DIMENSIONS ARE IN INCHES UNLESS OTHERWISE SHOWN.

FILE NAME =	USER NAME = budzynskim	DESIGNED -	REVISED -	STATE OF ILLINOIS DEPARTMENT OF TRANSPORTATION	STANDARD 701400 (SPECIAL)	F.A.I. RTE.	SECTION	COUNTY	TOTAL SHEETS	SHEET NO.	*LIVINGSTON & GRUNDY CONTRACT NO. 66F06
p:\1\084EBIDINTEG.illinois.gov\PIWIDOT\Documents\IDOT Offices\District 3\Projects\0366\Drawings\06-shd-details.dgn		CHECKED -	REVISED -			55	(32-2, 3) I-1, (53-1, 2) I	*	5	5	
PLOT SCALE = 100.0000' / 1in.		DATE -	REVISED -			SCALE: SHEET OF SHEETS STA. TO STA.					
PLOT DATE = 2/1/2016						ILLINOIS FED. AID PROJECT					