

STATE OF ILLINOIS
DEPARTMENT OF TRANSPORTATION
DIVISION OF HIGHWAYS

**PROPOSED
HIGHWAY PLANS**

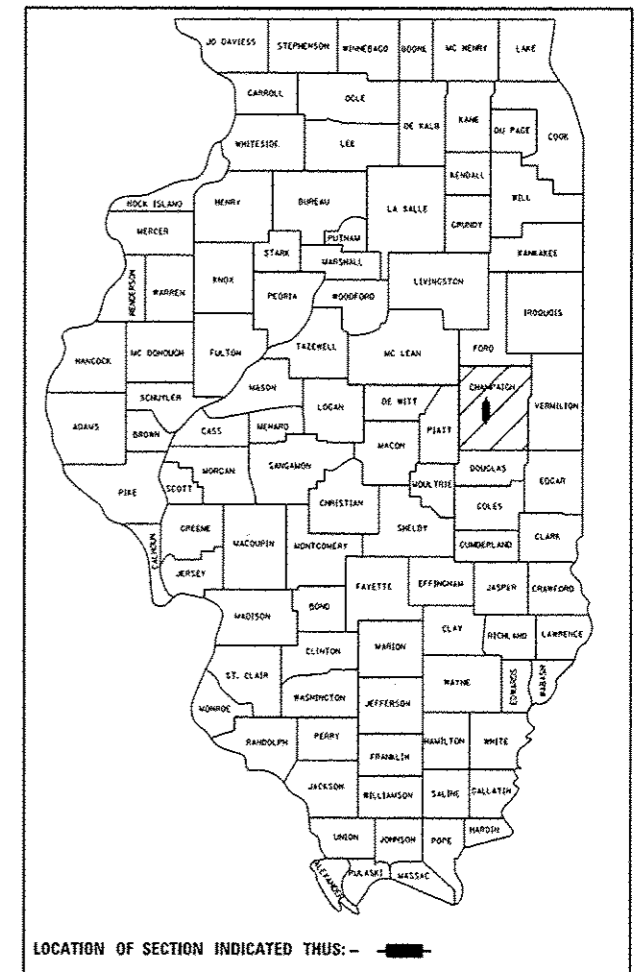
FAU ROUTE 7177 (LINCOLN AVE.)
SECTION (14HB-3)I

BRIDGE REPAIR
LINCOLN AVE. OVER I-74
AT URBANA
CHAMPAIGN COUNTY

C-95-043-15

F.A.U. RTE.	SECTION	COUNTY	TOTAL SHEETS	SHEET NO.
7177	(14HB-3)I	CHAMPAIGN	19	1
		ILLINOIS	CONTRACT NO. 70B43	

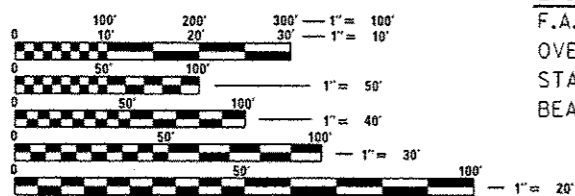
D-95-043-15



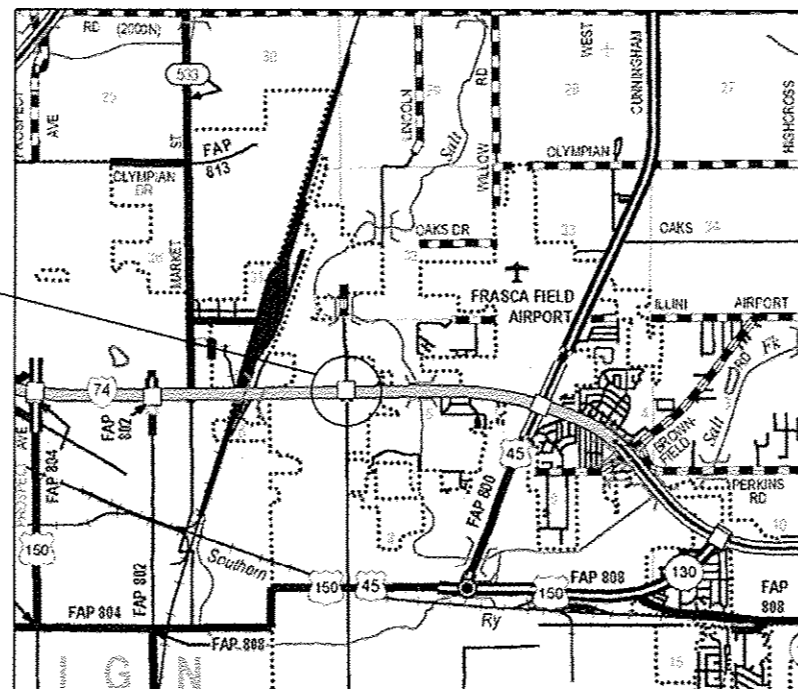
FOR INDEX OF SHEETS, SEE SHEET NO. 2
FOR SUMMARY OF QUANTITIES, SEE SHEET NO. 3

CURRENT TRAFFIC DATA STR. 010-0158	
2015 ADT	= 10,500
2035 ADT	= 11,600
PU + PC %	= 85.6
SU %	= 9.1
MU%	= 5.3

DESIGN DESIGNATION
OTHER PRINCIPAL ARTERIAL



EXISTING S.N. 010-0158
F.A.U. 7177 (LINCOLN AVE.)
OVER I-74
STATION 10+00.00
BEARING REPLACEMENT



T 20 N

R 9 E

FULL SIZE PLANS HAVE BEEN PREPARED USING STANDARD ENGINEERING SCALES. REDUCED SIZED PLANS WILL NOT CONFORM TO STANDARD SCALES. IN MAKING MEASUREMENTS ON REDUCED PLANS, THE ABOVE SCALES MAY BE USED.

J.U.L.I.E.
JOINT UTILITY LOCATION INFORMATION FOR EXCAVATION
1-800-892-0123
OR 811

TOWNSHIP: CUNNINGHAM

PROJECT ENGINEER: TIM BRANDENBURG
PROJECT DESIGNER: ERIC SHAWLER
217-465-4181

CONTRACT NO. 70B43

GROSS LENGTH = 190.00 FT. = 0.0360 MILE
NET LENGTH = 190.00 FT. = 0.0360 MILE

STATE OF ILLINOIS
DEPARTMENT OF TRANSPORTATION
DIVISION OF HIGHWAYS

SUBMITTED *January 6, 2016*
Thomas A. James
DEPUTY DIRECTOR OF HIGHWAYS, REGION ENGINEER

March 18, 2016
Muhammad A. Adz RE
ENGINEER OF DESIGN AND ENVIRONMENT

March 18, 2016
Cher O'Sman RE
DIRECTOR OF HIGHWAYS, CHIEF ENGINEER

**PRINTED BY THE AUTHORITY
OF THE STATE OF ILLINOIS**

THE EXISTING 4 SPAN OVERHEAD STRUCTURE WAS BUILT IN 1956 BY THE STATE OF ILLINOIS AS FA ROUTE 39, SECTION 14-HB-3 AT STATION 1254+13 AT CHAMPAIGN IN CHAMPAIGN COUNTY. THE SUPERSTRUCTURE CONSISTED OF TWELVE W30 STEEL BEAMS SUPPORTING A 7" REINFORCED CONCRETE DECK. IN 1990 THE STRUCTURE WAS RECONSTRUCTED AS FAI 74, SECTION (14HB-3)BRK AT STATION 1254+13. THE DECK WAS REPLACED AND WIDENED BY PLACING ONE W30 BEAM ON THE WEST SIDE AND TWO ON THE EAST SIDE OF THE STRUCTURE. THE EXISTING ABUTMENTS AND PIERS WERE WIDENED TO SUPPORT THE NEW 7 1/2" DECK GEOMETRY. A SIX FOOT CONCRETE MEDIAN DIVIDES NORTH AND SOUTH BOUND TRAFFIC. TURN LANES WERE ESTABLISHED ACROSS THE STRUCTURE ALLOWING FOR SIGNALIZATION OF THE ENTRANCE AND EXIT RAMP TO I-74. A FIVE FOOT SIDEWALK WAS PLACED ON THE WEST SIDE OF THE STRUCTURE.

GENERAL PLAN & ELEVATION

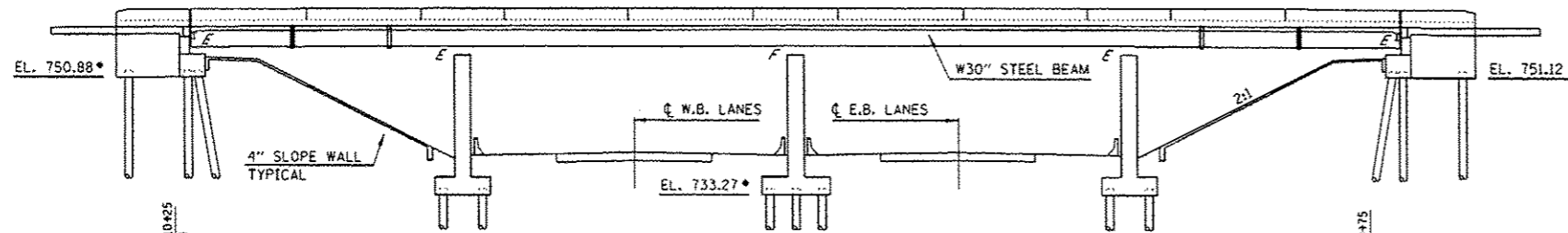
S.N. 010-0158

WORK SHALL BE COMPLETED WITH STAGED CONSTRUCTION.



TOTAL BILL OF MATERIALS

ITEM	UNIT	TOTAL
ELASTOMERIC BEARING ASSEMBLY TYPE II	EACH	30.0
JACK AND REMOVE EXISTING BEARINGS	EACH	30.0
FURNISHING AND ERECTING STRUCTURAL STEEL	POUND	3510.0
ANCHOR BOLTS 1"	EACH	60.0



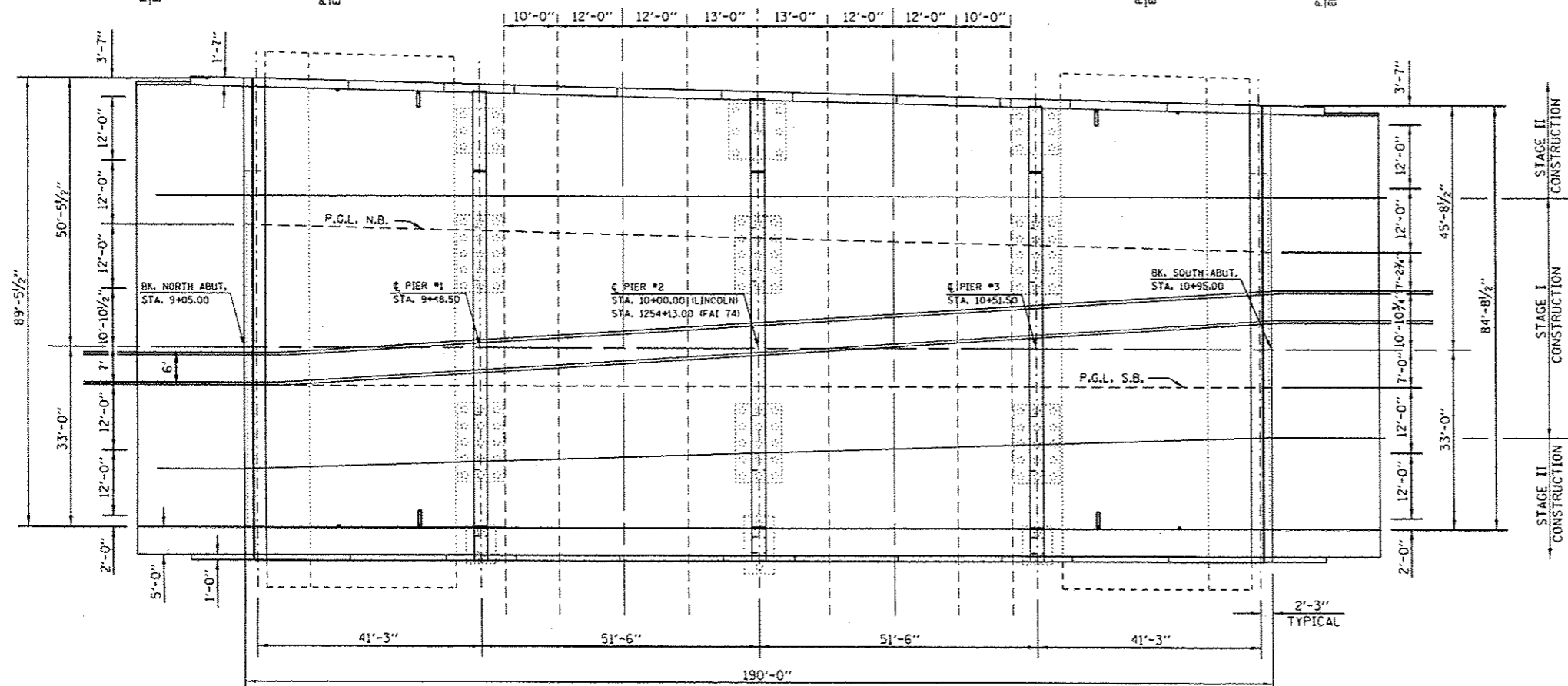
ELEVATION

ELEVATIONS TAKEN FROM AS-BUILT PLANS AND ARE SHOWN FOR PERSPECTIVE ONLY.

GENERAL NOTES

PLAN DIMENSIONS AND DETAILS RELATIVE TO THE EXISTING PLANS ARE SUBJECT TO NOMINAL CONSTRUCTION VARIATIONS. THE CONTRACTOR SHALL FIELD VERIFY EXISTING DIMENSIONS AND DETAILS AFFECTING NEW CONSTRUCTION AND MAKE NECESSARY APPROVED ADJUSTMENTS PRIOR TO CONSTRUCTION OR ORDERING OF MATERIALS. SUCH VARIATIONS SHALL NOT BE CAUSE FOR ADDITIONAL COMPENSATION FOR A CHANGE IN SCOPE OF WORK, HOWEVER, THE CONTRACTOR WILL BE PAID FOR THE QUANTITY ACTUALLY FURNISHED AT THE UNIT PRICE BID FOR THE WORK.

THE AMOUNT OF DECK HEAVE AT THE JOINT SHOULD BE MEASURED FOR EACH BEAM LINE AND SUBTRACTED FROM THE FIELD VERIFIED BEARING HEIGHT (TOP OF ABUTMENT CAP TO BOTTOM OF BEAM).



PLAN VIEW

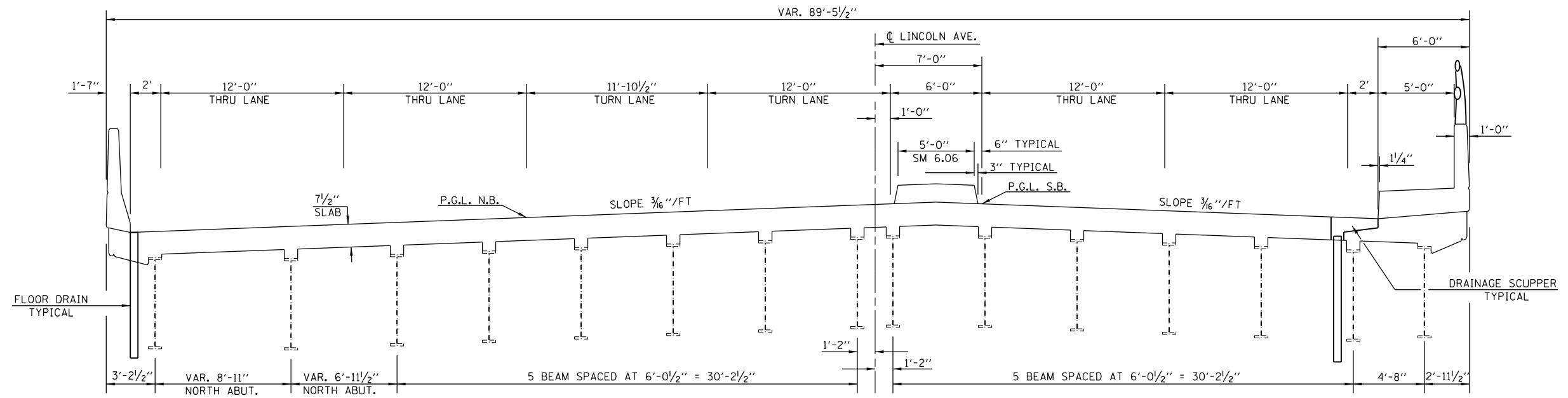


David Carl Puzey 3/31/16
Expires 11/30/16

FILE NAME *	USER NAME * chawlor	DESIGNED - ESS	REVISED -	STATE OF ILLINOIS DEPARTMENT OF TRANSPORTATION	GENERAL PLAN & ELEVATION		F.A.J. RTE.	SECTION	COUNTY	TOTAL SHEETS	SHEET NO.
Default	PLLOT SCALE * 48.8888' / 1"	CHECKED -	REVISED -		7177	(14HB-3)	CHAMPAIGN	19	4		
PLLOT DATE * 1/6/2016	DATE - 7/7/2015	REVISED -	REVISED -		SCALE:	SHEET 1 OF 16 SHEETS	STA. TO STA.	ILLINOIS FED. AID PROJECT			

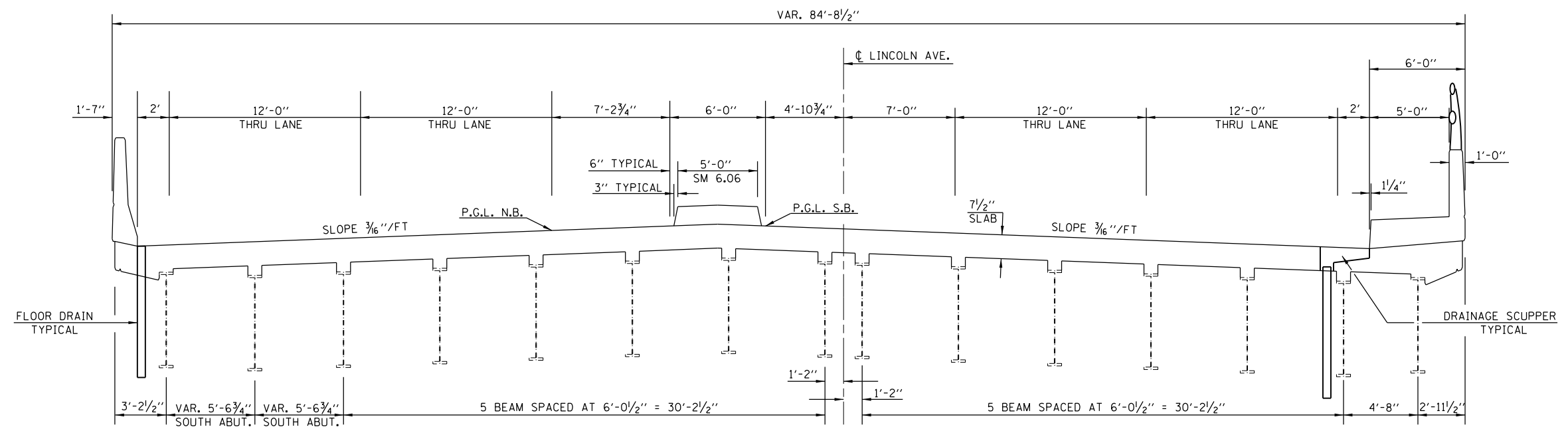
CONTRACT NO. 70B43

EXISTING DECK CROSS SECTION NORTH ABUTMENT



LOOKING SOUTH

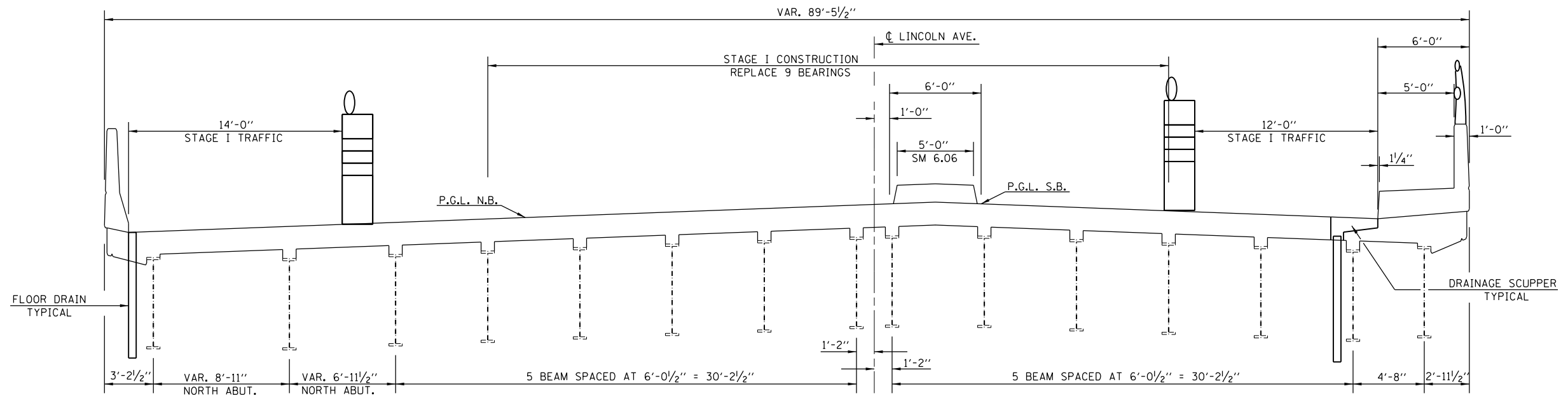
EXISTING DECK CROSS SECTION SOUTH ABUTMENT



LOOKING SOUTH

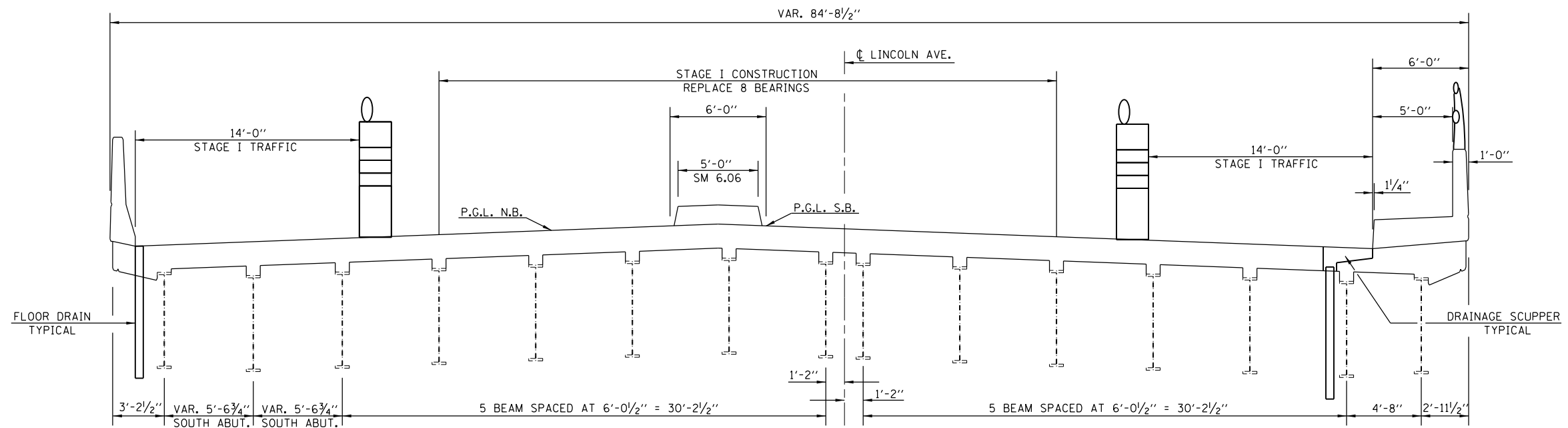
FILE NAME =	USER NAME = showleres	DESIGNED - ESS	REVISED -	STATE OF ILLINOIS DEPARTMENT OF TRANSPORTATION	EXISTING DECK CROSS SECTIONS S.N. 010-0158			F.A.U. RTE.	SECTION	COUNTY	TOTAL SHEETS	SHEET NO.	
pw:\IL\084EBIDINTEG.illinois.gov\PIWIDOT\Documents\IDOT Offices\District 5\Projects\0577\BID\0577\Hydro\0577\05770843.sht-Report													
Default	PLOT SCALE = 40.0000' / in.	CHECKED -	REVISED -			SCALE:	SHEET 2 OF 16 SHEETS	STA.	TO STA.	7177	(14HB-3)I	CHAMPAIGN	19
	PLOT DATE = 12/9/2015	DATE - 7/14/2015	REVISED -									CONTRACT NO. 70B43	
											ILLINOIS FED. AID PROJECT		

STAGE ONE CONSTRUCTION NORTH ABUTMENT



LOOKING SOUTH

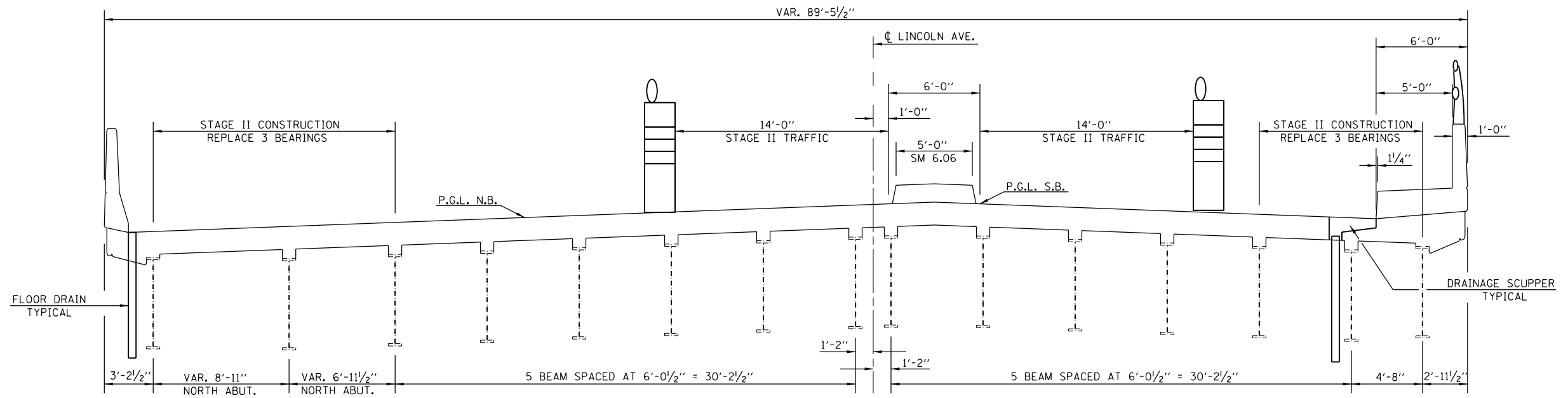
STAGE ONE CONSTRUCTION SOUTH ABUTMENT



LOOKING SOUTH

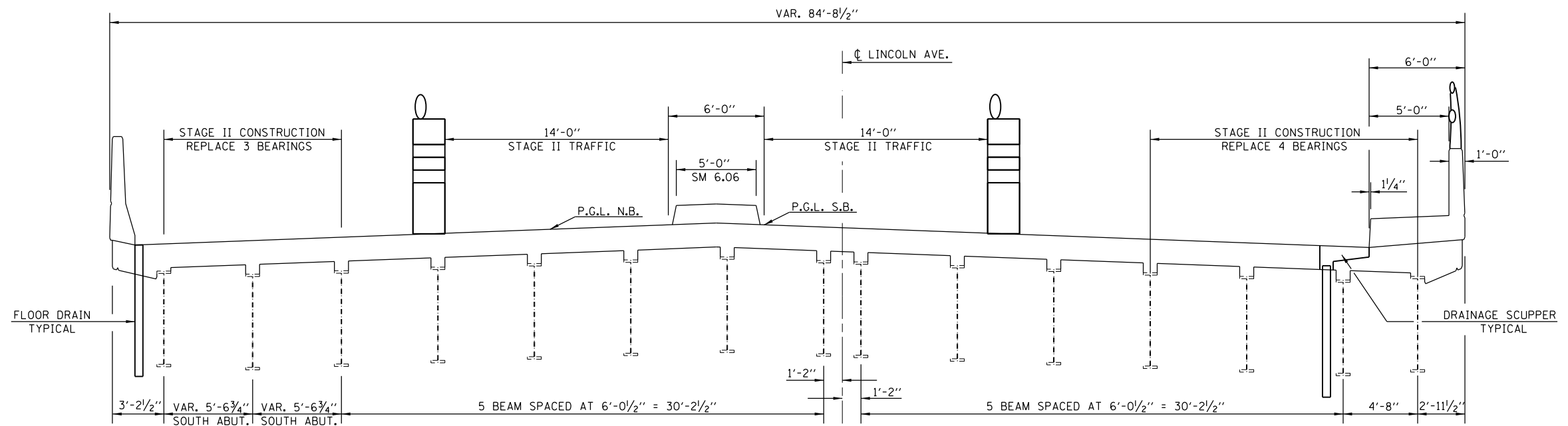
FILE NAME =	USER NAME = showleres	DESIGNED - ESS	REVISED -	STATE OF ILLINOIS DEPARTMENT OF TRANSPORTATION	STAGE CONSTRUCTION DETAILS S.N. 010-0158	F.A.U. R.T.E. =	SECTION =	COUNTY =	TOTAL SHEETS =	SHEET NO. =
pw:\IL\084EBIDINTEG.illinois.gov\PIW001\Documents\IDOT Offices\District 5\Projects\0577\BID\0577\Hydro\0577\05770843.sht-Report		REVISIONS -				7177	(14HB-3)I	CHAMPAIGN	19	6
Default	PLOT SCALE = 40.0000' / in.	CHECKED -	REVISED -			SCALE: SHEET 3 OF 16 SHEETS STA. TO STA.		CONTRACT NO. 70B43		
	PLOT DATE = 12/9/2015	DATE - 12/7/2015	REVISED -	ILLINOIS FED. AID PROJECT						

STAGE TWO CONSTRUCTION NORTH ABUTMENT



LOOKING SOUTH

STAGE TWO CONSTRUCTION SOUTH ABUTMENT



LOOKING SOUTH

FILE NAME =	USER NAME = showleres	DESIGNED - ESS	REVISED -	STATE OF ILLINOIS DEPARTMENT OF TRANSPORTATION	EXISTING DECK CROSS SECTIONS S.N. 010-0158	F.A.U. RTE.	SECTION	COUNTY	TOTAL SHEETS	SHEET NO.	
						7177	(14HB-3)I	CHAMPAIGN	19	7	
						CONTRACT NO. 70B43					
						ILLINOIS FED. AID PROJECT					
Default	PLOT DATE = 12/9/2015	DATE - 12/7/2015	REVISED -			SCALE:	SHEET 4	OF 16 SHEETS	STA.	TO STA.	

NOTES

All structural steel shall conform to AASHTO Classification M-270 Gr. 36, unless otherwise noted.

Fasteners shall be high strength bolts. Bolts $\frac{3}{4}$ " ϕ , open holes $\frac{13}{16}$ " ϕ , unless otherwise noted.

Plan dimensions and details relative to existing plans are subject to nominal construction variations. The Contractor shall field verify existing dimensions and details affecting new construction and make necessary approved adjustments prior to construction or ordering of materials. Such variations shall not be cause for additional compensation for a change in scope of the work, however, the Contractor will be paid for the quantity actually furnished at the unit price bid for the work.

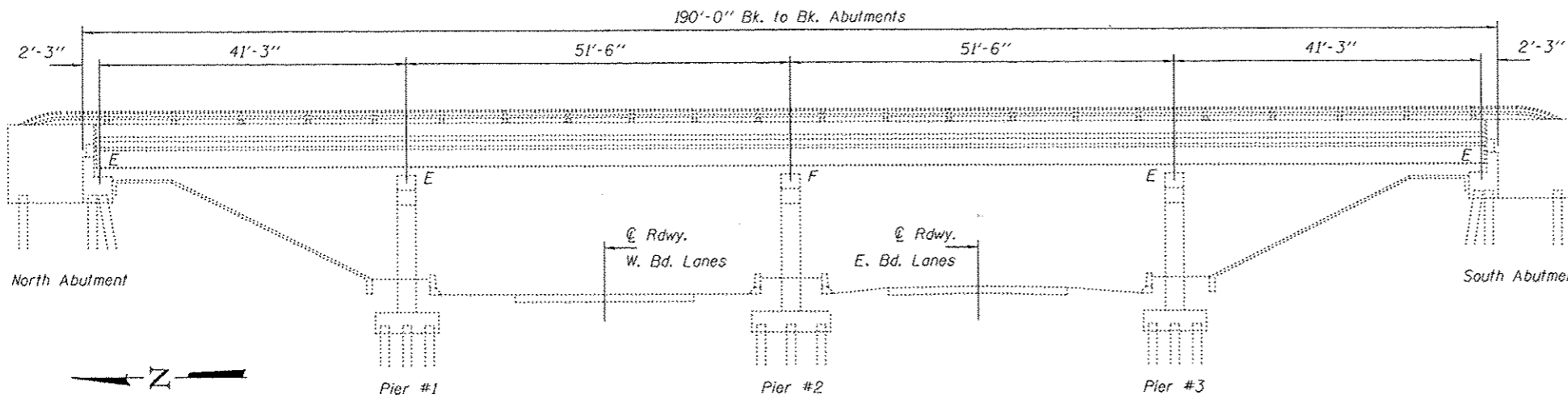
The existing structural steel coating contains lead. The Contractor shall take appropriate precautions to deal with the presence of lead on this project.

Existing structural steel that will be in contact with new structural steel shall be cleaned and painted prior to erection as required by the GBSP "Cleaning and Painting Contact Surface Areas of Existing Steel Structures".

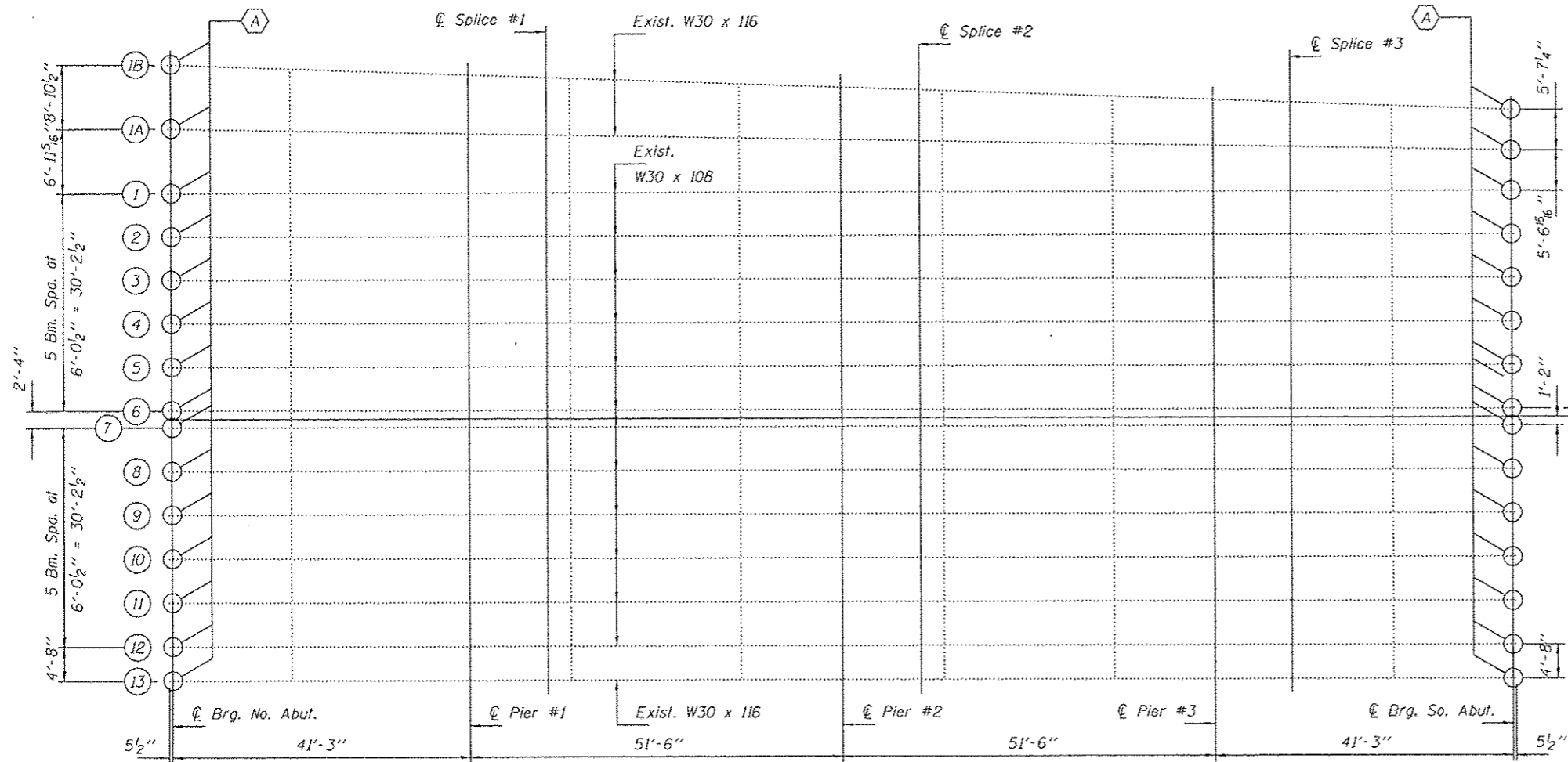
All structural steel shall be shop painted with the inorganic zinc rich primer per AASHTO M300, Type 1. Cost included with Furnishing & Erecting Structural Steel.

The proposed bearing and steel extensions are based on the original design bearing heights. The intention is to bring the height of the Abutment bearings down to the initial design heights to avoid damage to the joints and deck ends.

For Bill of Material see sheet 2 of 2.



ELEVATION



FRAMING PLAN

(A) Remove and Replace Bearings

DESIGNED CCC
 CHECKED SMR
 DRAWN J. Schneller
 CHECKED CCC SMR

PASSED

J. Carl Perry
 ENGINEER OF BRIDGES AND STRUCTURES

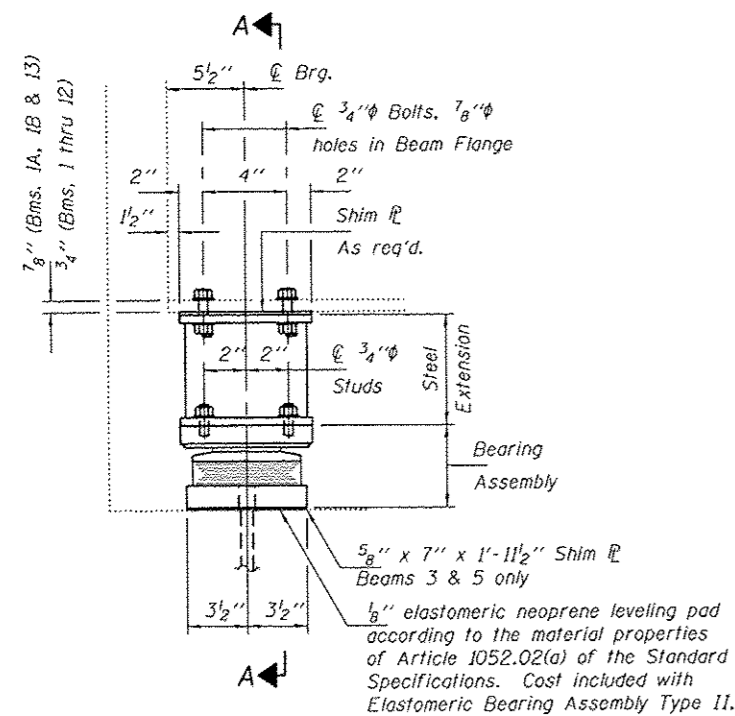
DATE - MARCH 31, 2016
 REVISED
 REVISED

STATE OF ILLINOIS
 DEPARTMENT OF TRANSPORTATION

PLAN & ELEVATION
 LINCOLN AVENUE OVER F.A.I. Rt. 74
 SN 010-0158

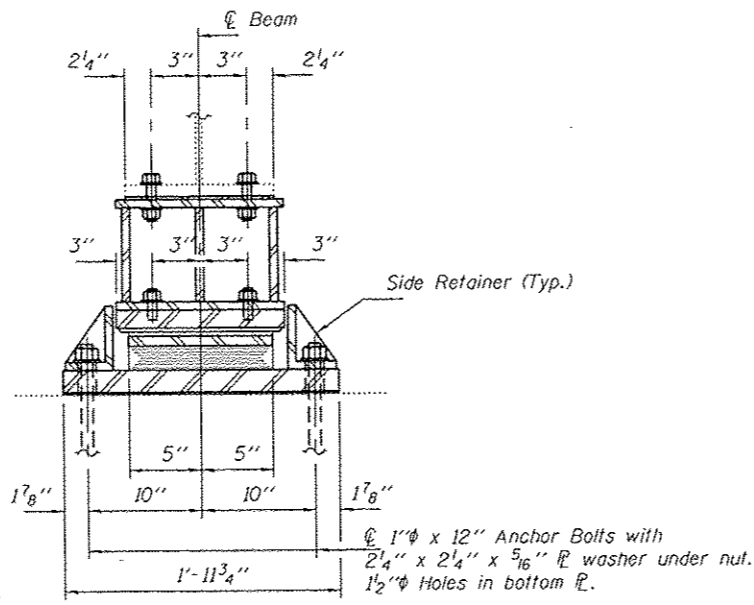
SHEET NO. 1 OF 2 SHEETS

F.A.I. RTE.	SECTION	COUNTY	TOTAL SHEETS	SHEET NO.
7177	(14HB-3)I	CHAMPAIGN	19	8
CONTRACT NO. 70B43				
ILLINOIS FED. AID PROJECT				



ELEVATION AT ABUTMENT

TYPE II TFE ELASTOMERIC EXP. BRG.

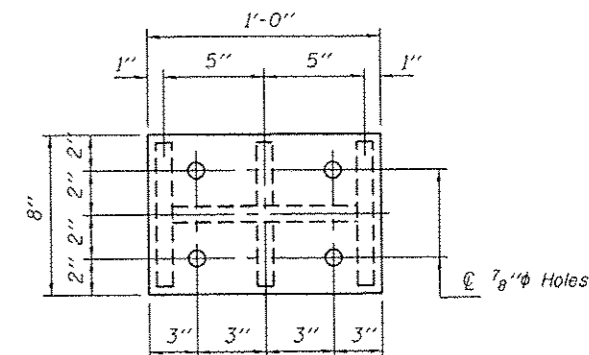


SECTION A-A

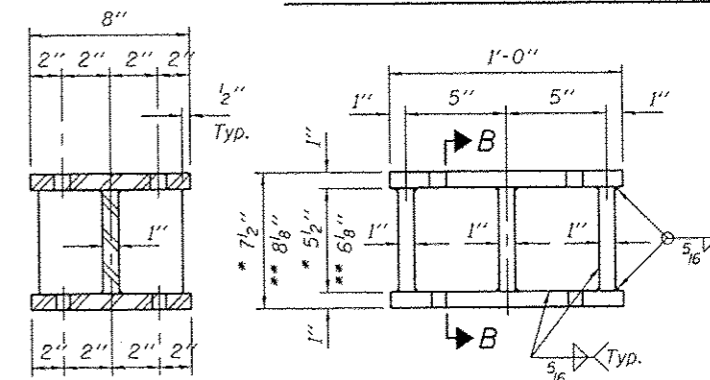
BEAM REACTIONS

	N. Abut.	S. Abut.
R ₁	(K) 18.4	14.3
R ₂	(K) 29.5	29.5
Imp.	(K) 8.9	8.9
R (Total)	(K) 56.8	52.7

Notes:
 Diaphragm removal and reinstallation may be required to facilitate drilling holes. Cost included with Furnishing and Erecting Structural Steel.
 New steel extensions, shim plates and connection bolts are included with Furnishing and Erecting Structural Steel.
 Prior to ordering any material, the Contractor shall verify in the field all bearing height and shim thickness dimensions. Min. jack capacity = 30 Tons.
 Anchor bolts shall be ASTM F1554 all-thread (or an Engineer-approved alternate material) of the grade(s) and diameter(s) specified. ASTM A307 Grade C anchor bolts may be used in lieu of ASTM F1554 Grade 36 (F_y=36ksi). The corresponding specified grade of AASHTO M314 anchor bolts may be used in lieu of ASTM F1554.
 Anchor bolts of fixed bearings may be either cast in place or installed in holes drilled after the supported member is in place.
 Anchor bolts for Type II bearings shall be placed in holes drilled through the bottom bearing plate after members are in place. Side retainers shall be placed after bolts are installed.
 Drilled and set anchor bolts shall be installed according to Article 521.06 of the Standard Specifications.
 Side retainers shall be included in the cost of Elastomeric Bearing Assembly, Type II.
 The 1/8" PTFE sheet shall be bonded directly to the top steel plate with a two-component, medium viscosity epoxy resin, conforming to the requirements of the Federal Specification MMM-A-134, Type I. The bond agent shall be applied on the full area of the contact surfaces.
 Bonding of 1/8" PTFE sheet during vulcanizing process will be permitted provided the process and method of adjusting assembly height is approved by the Engineer.



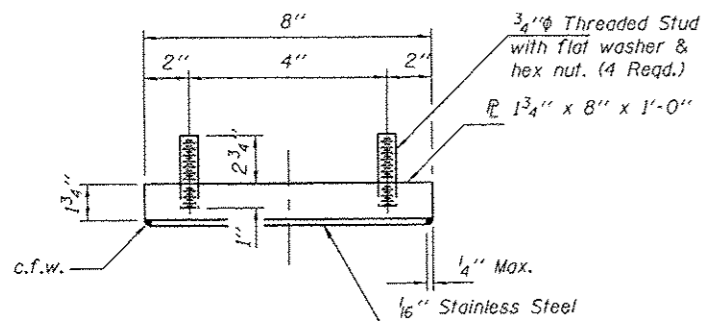
PLAN TOP AND BOTTOM PLATE



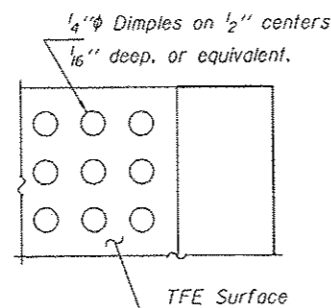
SECTION B-B

STEEL EXTENSION DETAIL

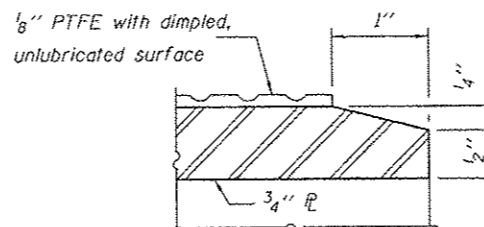
* = Beams 1A, 1B & 13 (No. Req'd. = 6)
 ** = Beams 1 thru 12 (No. Req'd. = 24)



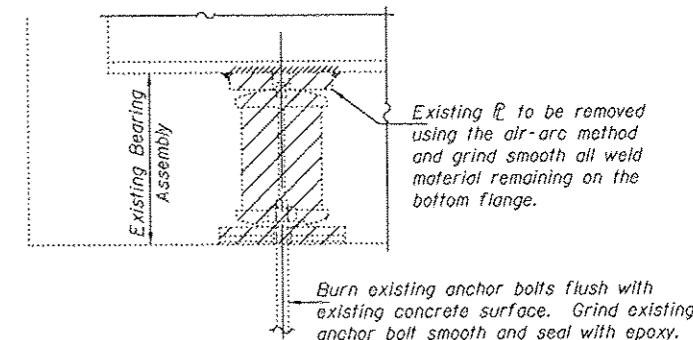
TOP BEARING ASSEMBLY



PLAN-PTFE SURFACE

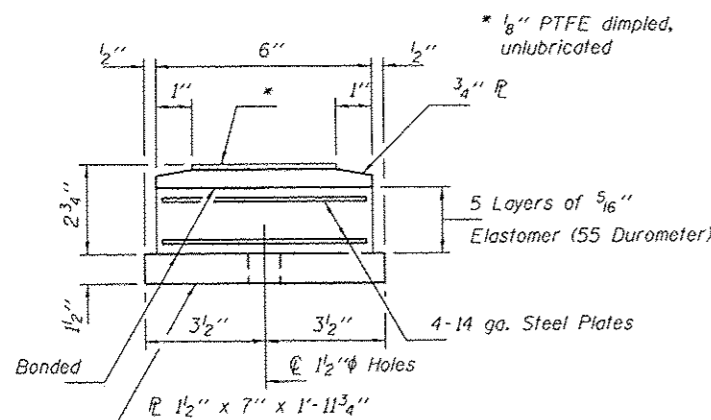


SECTION THRU PTFE

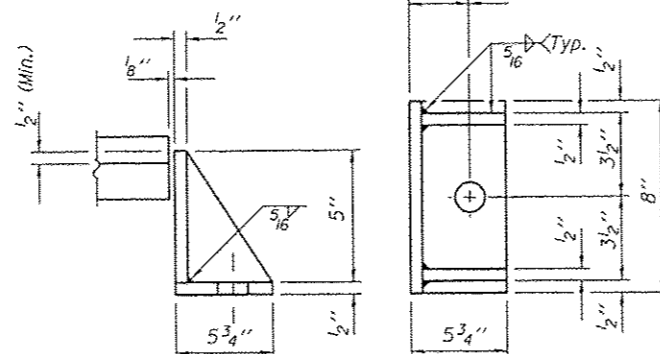


EXISTING BEARING REMOVAL DETAIL

Cost included with Jack and Remove Existing Bearings.

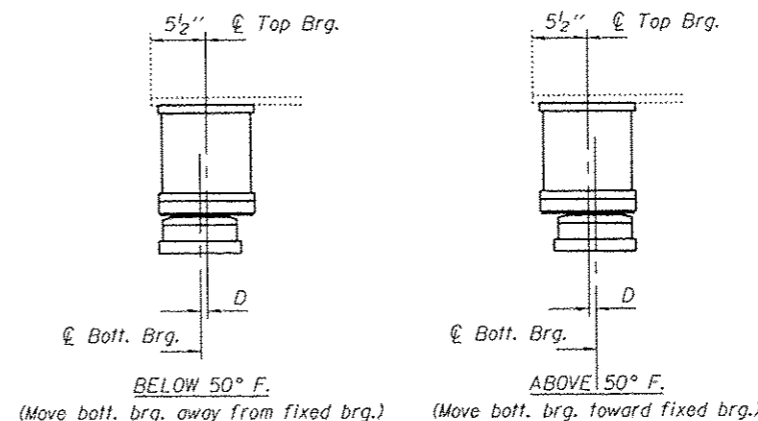


BOTTOM BEARING ASSEMBLY



SIDE RETAINER

Equivalent rolled angle with stiffeners will be allowed in lieu of welded plates.



SETTING ANCHOR BOLTS AT EXP. BRG.

D = 1/8" per each 100' of expansion for every 15° temp. change from the normal temp. of 50°F.

BILL OF MATERIAL

Item	Unit	Total
Elastomeric Bearing Assembly, Type II	Each	30
Jack and Remove Existing Bearings	Each	30
Furnishing and Erecting Structural Steel	Pound	3510
Anchor Bolts 1" Φ	Each	60

TYII/REPS 12-03-2008

DESIGNED CCC
 CHECKED SMR
 DRAWN J Schneller
 CHECKED CCC SMR

PASSED
 ENGINEER OF BRIDGES AND STRUCTURES

DATE - MARCH 31, 2016
 REVISED
 REVISED

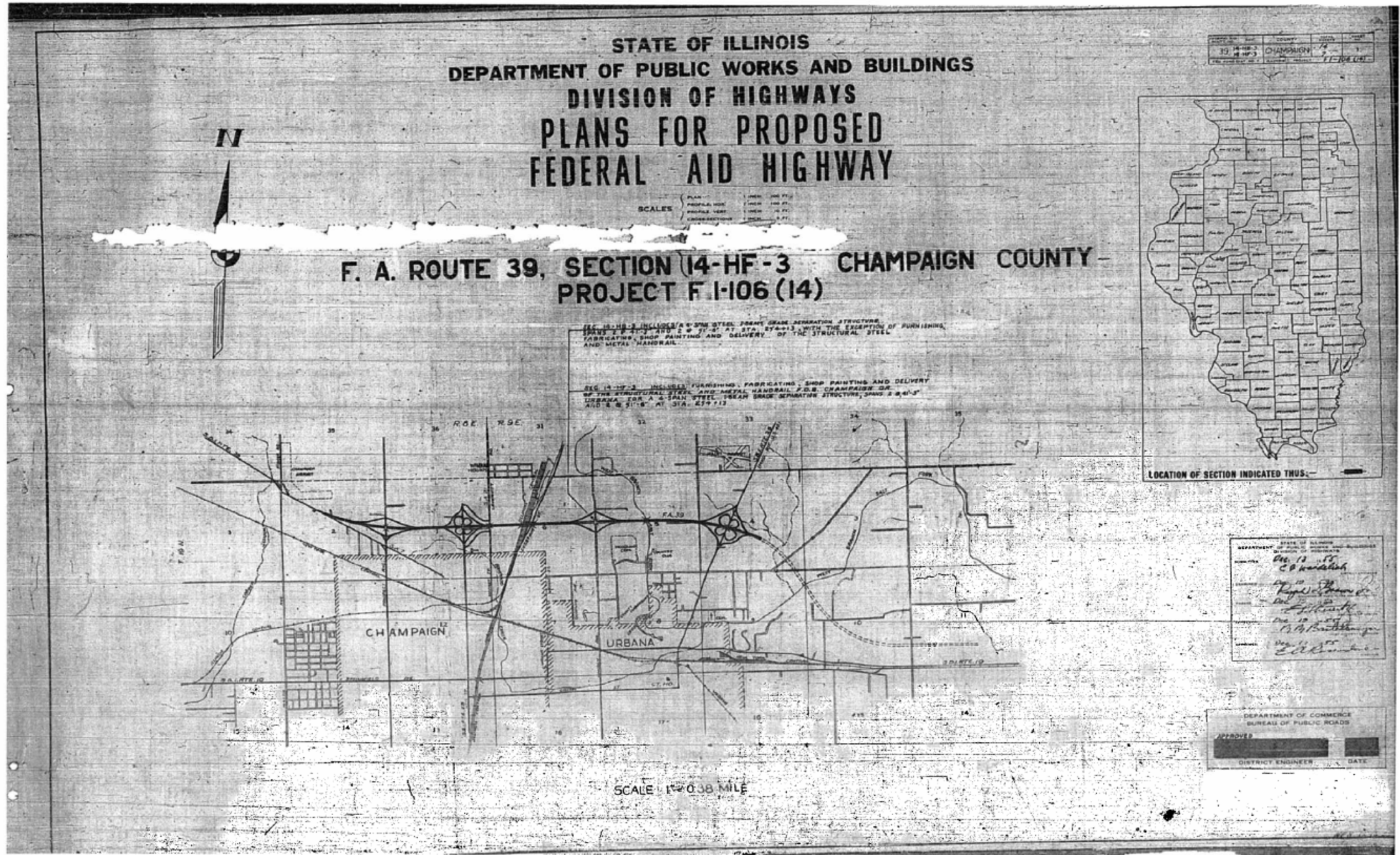
STATE OF ILLINOIS
 DEPARTMENT OF TRANSPORTATION

ELASTOMERIC BEARING TYPE II DETAILS
 NORTH & SOUTH ABUTMENTS
 SN 010-0158

SHEET NO. 2 OF 2 SHEETS

F.A.U. RTE.	SECTION	COUNTY	TOTAL SHEETS	SHEET NO.
7177	(14HB-3)E	CHAMPAIGN	19	9
CONTRACT NO. 70B43				
ILLINOIS FED. AID PROJECT				

AS-BUILT PLANS (1955) FOR INFORMATION ONLY S.N. 010-0158



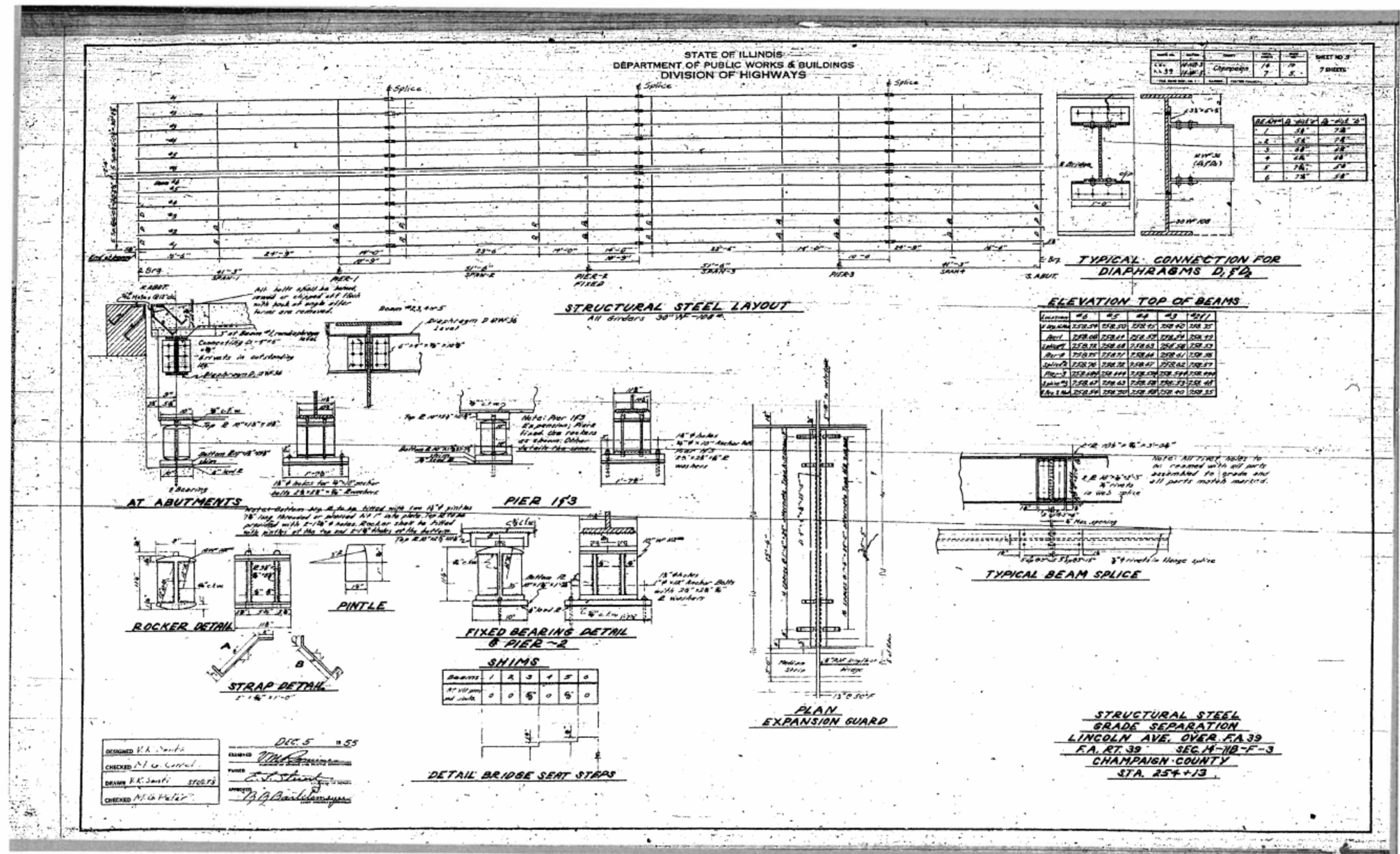
FILE NAME =	USER NAME = showleres	DESIGNED -	REVISED -
pw:\IL084EBIDINTEG.illinois.gov\PWIDOT\Documents\DOT Offices\District 5\Projects\0577\BAND\0577\Hydraulics\0570843.sht-Report		REVISIONS -	REVISED -
Default	PLOT SCALE = 40.0000' / in.	CHECKED -	REVISED -
	PLOT DATE = 12/9/2015	DATE -	REVISED -

**STATE OF ILLINOIS
DEPARTMENT OF TRANSPORTATION**

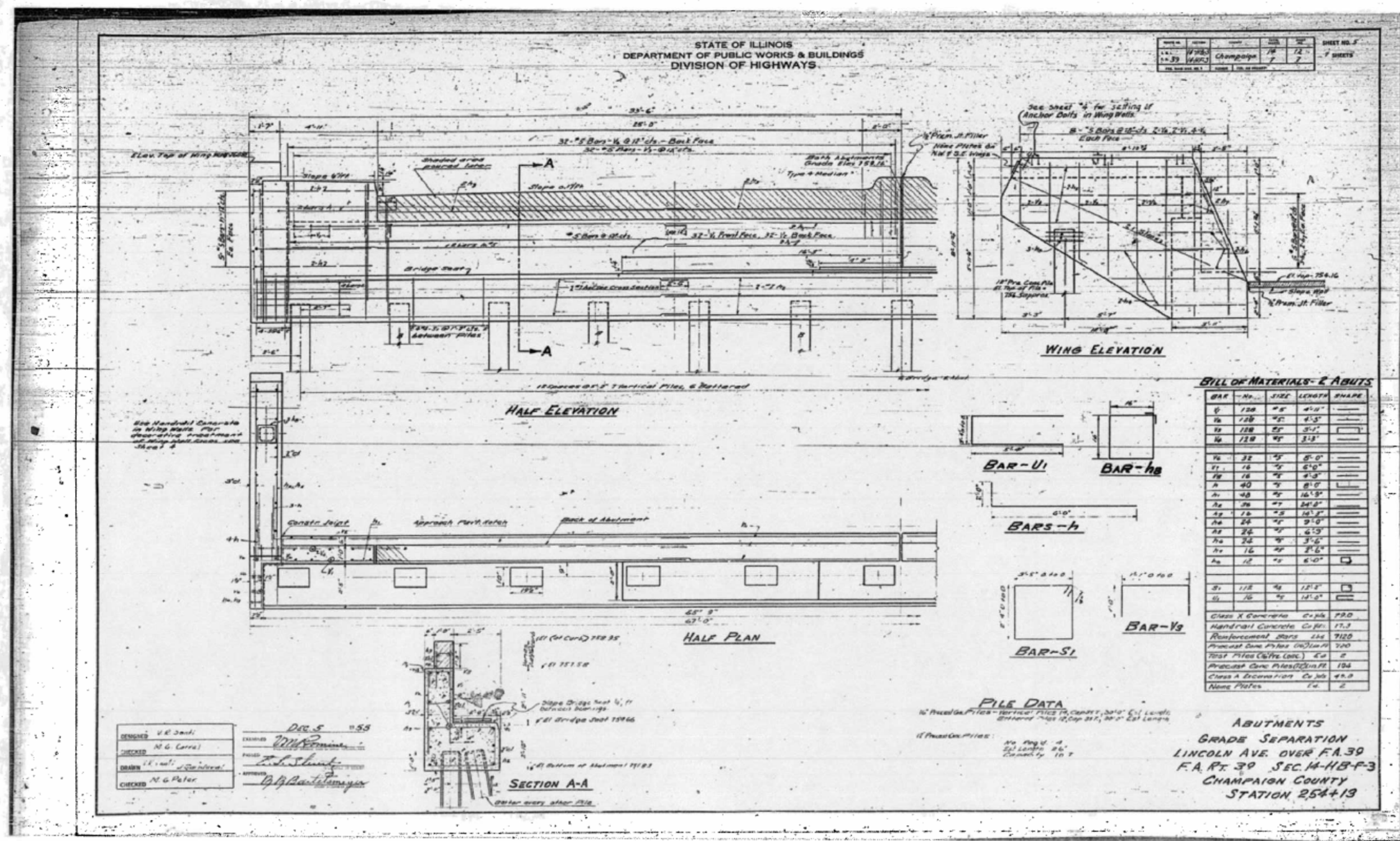
AS-BUILT PLANS FOR INFORMATION ONLY			
SCALE:	SHEET 7	OF 16 SHEETS	STA. TO STA.

F.A.U. RTE.	SECTION	COUNTY	TOTAL SHEETS	SHEET NO.
7177	(14HB-3)I	CHAMPAIGN	19	10
CONTRACT NO. 70B43			ILLINOIS FED. AID PROJECT	

AS-BUILT PLANS (1955) FOR INFORMATION ONLY S.N. 010-0158



AS-BUILT PLANS (1955) FOR INFORMATION ONLY S.N. 010-0158



**AS-BUILT PLANS (1990)
FOR INFORMATION ONLY
S.N. 010-0158**

ADM AS BUILT PLANS

**STATE OF ILLINOIS
DEPARTMENT OF TRANSPORTATION
DIVISION OF HIGHWAYS
PLANS FOR PROPOSED
FEDERAL AID INTERSTATE HIGHWAY
PROJ. ACIR-74-6 (124) 183**

STATE	SECTION	COUNTY	SHEET NO.
ILL.	14HB-31	CHAMPAIGN	19
P-95-036-86		C-95-078-89	

FOR INDEX OF SHEETS, SEE SHEET NO. 9
FOR SUMMARY OF QUANTITIES, SEE SHEET NO. 6

RESIDENT ENGR.: GEORGE J. BOGAK

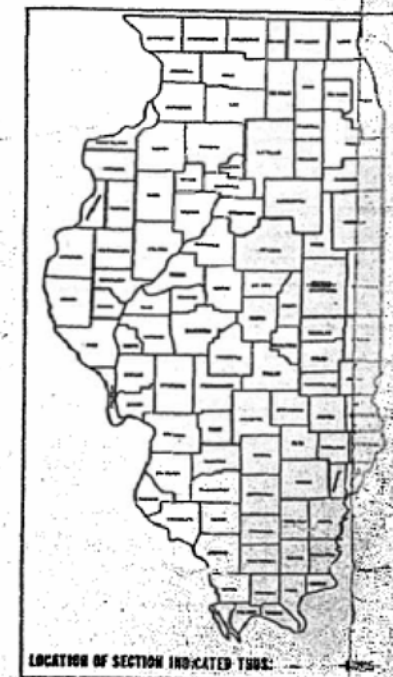
CONTRACTOR: UNIVERSITY ASPHALT/CHAMPAIGN ASPHALT

START DATE: 19 SEPT 89

COMPLETION DATE: 6-19-92

**F.A.I. ROUTE 74, SECTION (14HB-3) BRK
CHAMPAIGN COUNTY**

**INTERSTATE & FRONTAGE ROAD RECONSTRUCTION
BRIDGE REHABILITATION**



SECTION (14HB-3) BRK INCLUDES:

EXISTING BRIDGE HAS FOUR SPANS WITH 30 INCH STEEL GIRDERS AND A CONCRETE DECK OVERLAIN WITH A THIN BITUMINOUS SURFACE. THE PRESENT DECK ACCOMMODATES TWO 12 FOOT LANES IN EACH DIRECTION PLUS A 3 FOOT RAISED MEDIAN. THE PROPOSED IMPROVEMENT IS TO REHABILITATE ALL PIERS, ABUTMENTS, AND SLOPES AND TO REMOVE AND REPLACE THE CONCRETE DECK. THE NEW DECK WILL ALLOW TWO 12 FOOT LANES IN EACH DIRECTION PLUS A SINGLE LEFT TURN LANE SOUTHBOUND AND DOUBLE LEFT TURN LANES NORTHBOUND. IN ADDITION THE PAVEMENT BELOW THE BRIDGE WILL BE LOWERED ABOUT 2 FEET TO PROVIDE 16.25 FEET VERTICAL CLEARANCE.



**STA. 1238+00.00
BEGIN SECTION (14HB-3) BRK
BEGIN PROJECT**

**STA. 1272+00.00
END SECTION (14HB-3) BRK
END PROJECT**

DESIGN DESIGNATION
4400 (09) - TRUNK - 0397 (FLEX-20)

TOLL FREE 4-ILL-1E. TELEPHONE NO.
1-800-892-0723
CUMMINGHAM & URBANA TOWNSHIPS

TOTAL LENGTH OF SECTION (14HB-3) BRK = 3400.00 FT = 0.642 MILES
NET LENGTH OF SECTION (14HB-3) BRK = 3600.00 FT = 0.682 MILES
TOTAL LENGTH OF PROJECT = 3600.00 FT = 0.682 MILES
NET LENGTH OF PROJECT = 3400.00 FT = 0.642 MILES

CONTRACT NO. 90046

CHAMPAIGN COUNTY SECTION (14HB-3) BRK S.N. 010-0158

**STATE OF ILLINOIS
DEPARTMENT OF TRANSPORTATION
DIVISION OF HIGHWAYS**

DESIGNED BY: *George J. Bogak*

DRAWN BY: *Henry St. Roubel*

CHECKED BY: *[Signature]*

APPROVED BY: *[Signature]*

**U.S. DEPARTMENT OF TRANSPORTATION
FEDERAL BUREAU OF HIGHWAYS**

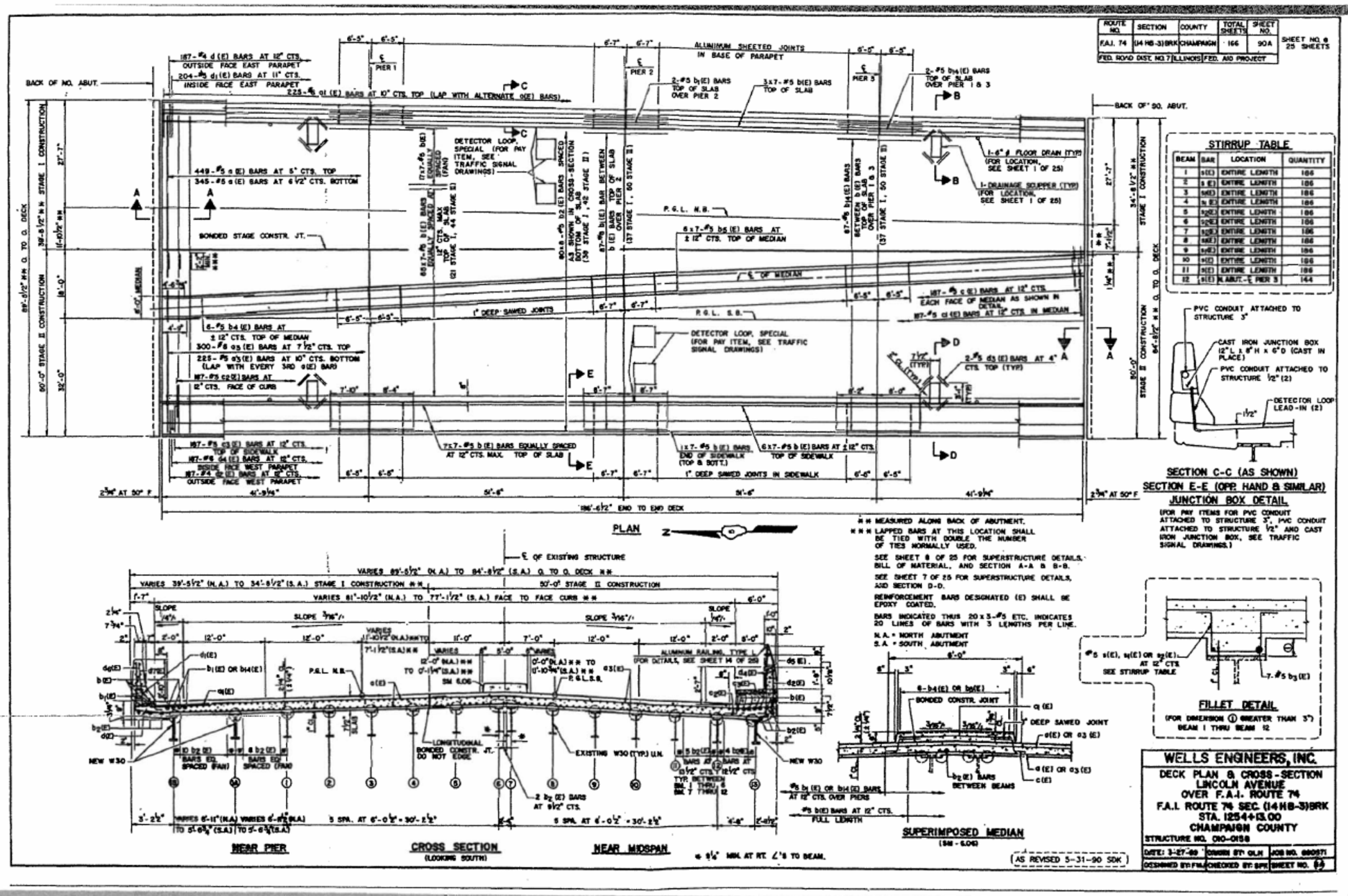
APPROVED: _____

DIVISION ADMINISTRATOR

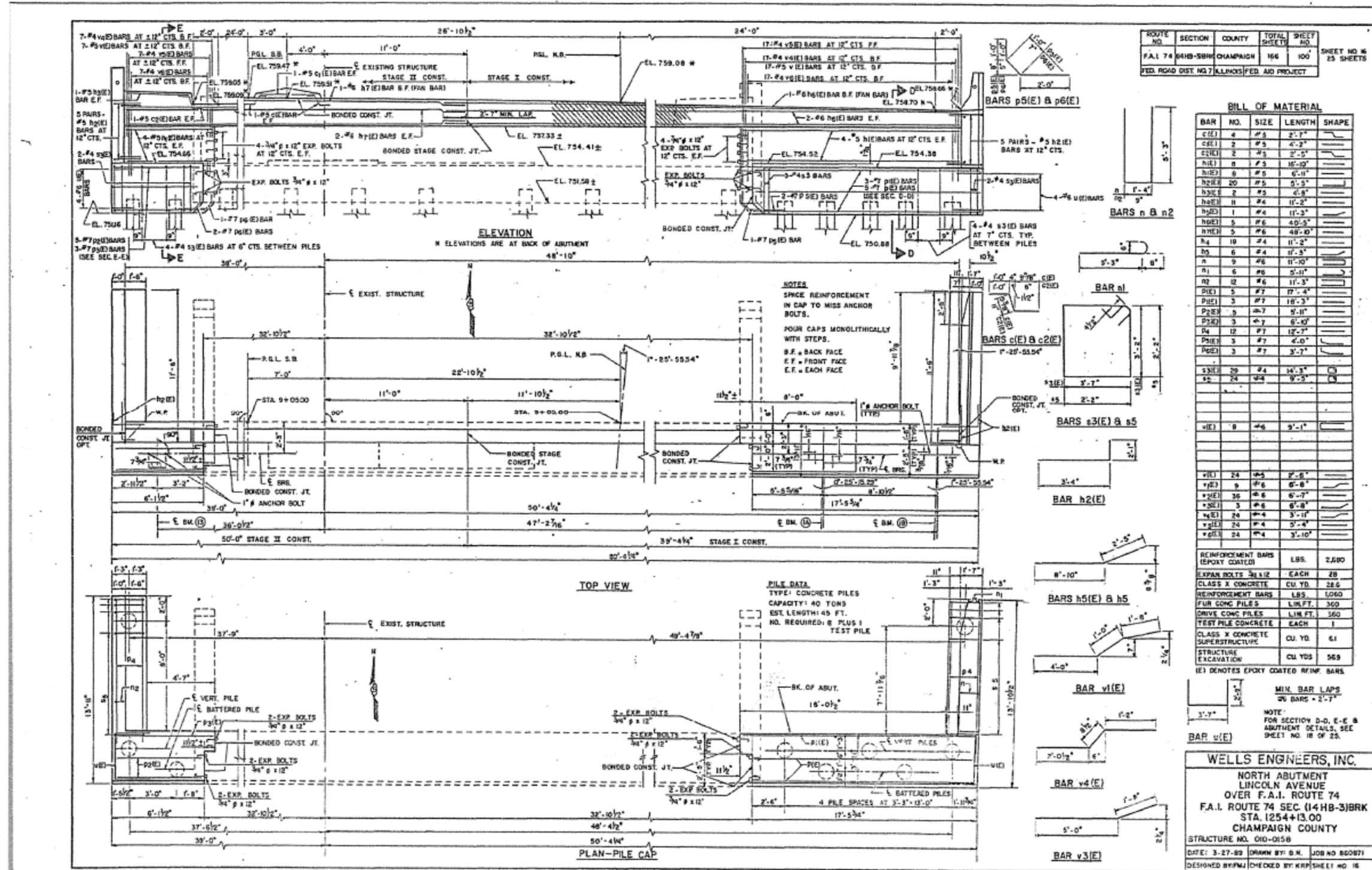
Paul Harris
Moses
BRIGHTON ENGINEERING COMPANY
ARLINGTON HEIGHTS, ILLINOIS
312-640-0840
78-640-0840

FILE NAME =	USER NAME = showleres	DESIGNED -	REVISED -	STATE OF ILLINOIS DEPARTMENT OF TRANSPORTATION	AS-BUILT PLANS FOR INFORMATION ONLY	F.A.U. RTE.	SECTION	COUNTY	TOTAL SHEETS	SHEET NO.	
pw:\IL084EBIDINTEG.illinois.gov\PWIDOT\Documents\DOT Offices\District 5\Projects\0579\BROWNDATA\Hydraulics\0570B43.sht-Report		CHECKED -	REVISED -			7177	(14HB-3)I	CHAMPAIGN	19	14	
Default		DATE -	REVISED -			CONTRACT NO. 70B43		ILLINOIS FED. AID PROJECT			
						SCALE:	SHEET 11	OF 16 SHEETS	STA.	TO STA.	

AS-BUILT PLANS (1990) FOR INFORMATION ONLY S.N. 010-0158



AS-BUILT PLANS (1990) FOR INFORMATION ONLY S.N. 010-0158



ROUTE NO.	SECTION	COUNTY	TOTAL SHEETS	SHEET NO.
F.A.I. 74	14HB-31	CHAMPAIGN	19	18

BAR NO.	SIZE	LENGTH	SHAPE
C1(E)	#3	2'-7"	
C2(E)	#3	4'-2"	
E1(E)	#3	2'-5"	
D1(E)	#3	15'-10"	
H1(E)	#5	6'-11"	
H2(E)	#5	5'-3"	
H3(E)	#5	4'-8"	
H4(E)	#4	11'-2"	
H5(E)	#4	11'-3"	
H6(E)	#6	40'-5"	
H7(E)	#6	48'-10"	
H8	#4	11'-2"	
H9	#4	11'-3"	
n	#6	11'-10"	
n1	#6	5'-11"	
n2	#6	11'-3"	
D1E1	#7	17'-4"	
P1E1	#7	18'-3"	
P2E1	#7	5'-11"	
P3E1	#7	6'-10"	
P4	#7	12'-7"	
P5E1	#7	4'-0"	
P6E1	#7	3'-7"	
S1E1	#4	14'-3"	
S2	#4	9'-5"	
v1(E)	#6	9'-1"	
v2(E)	#5	2'-6"	
v3(E)	#6	6'-8"	
v4(E)	#6	6'-7"	
v5(E)	#6	6'-8"	
v6(E)	#4	3'-11"	
v7(E)	#4	3'-4"	
v8(E)	#4	3'-10"	

REINFORCEMENT BARS (EPOXY COATED)	LBS.	2,680
EXPAN BOLTS 3/4" x 12"	EACH	28
CLASS X CONCRETE	CU. YD.	28.6
REINFORCEMENT BARS	LBS.	1,060
FUR CONC PILES	LIN. FT.	360
DRIVE CONC PILES	LIN. FT.	360
TEST PILE CONCRETE	EACH	1
CLASS X CONCRETE SUPERSTRUCTURE	CU. YD.	61
STRUCTURE EXCAVATION	CU. YDS	569

WELLS ENGINEERS, INC.
NORTH ABUTMENT
LINCOLN AVENUE
OVER F.A.I. ROUTE 74
F.A.I. ROUTE 74 SEC. (14HB-31)BK
STA. 1254+13.00
CHAMPAIGN COUNTY
STRUCTURE NO. 010-0158
DATE: 3-27-89 DRAWN BY: B.M. JOB NO. 808271
DESIGNED BY: [] CHECKED BY: KRP SHEET NO. 18

FILE NAME =	USER NAME = showler	DESIGNED -	REVISED -
pw:\11084EBID\INTEG.11\inois.gov\PIW001\Documents\DOT Offices\District 5\Projects\0577\BROWNDATA\Hydraulics\0570B43.sht-Report		CHECKED -	REVISED -
Default	PLOT DATE = 12/9/2015	DATE -	REVISED -

**STATE OF ILLINOIS
DEPARTMENT OF TRANSPORTATION**

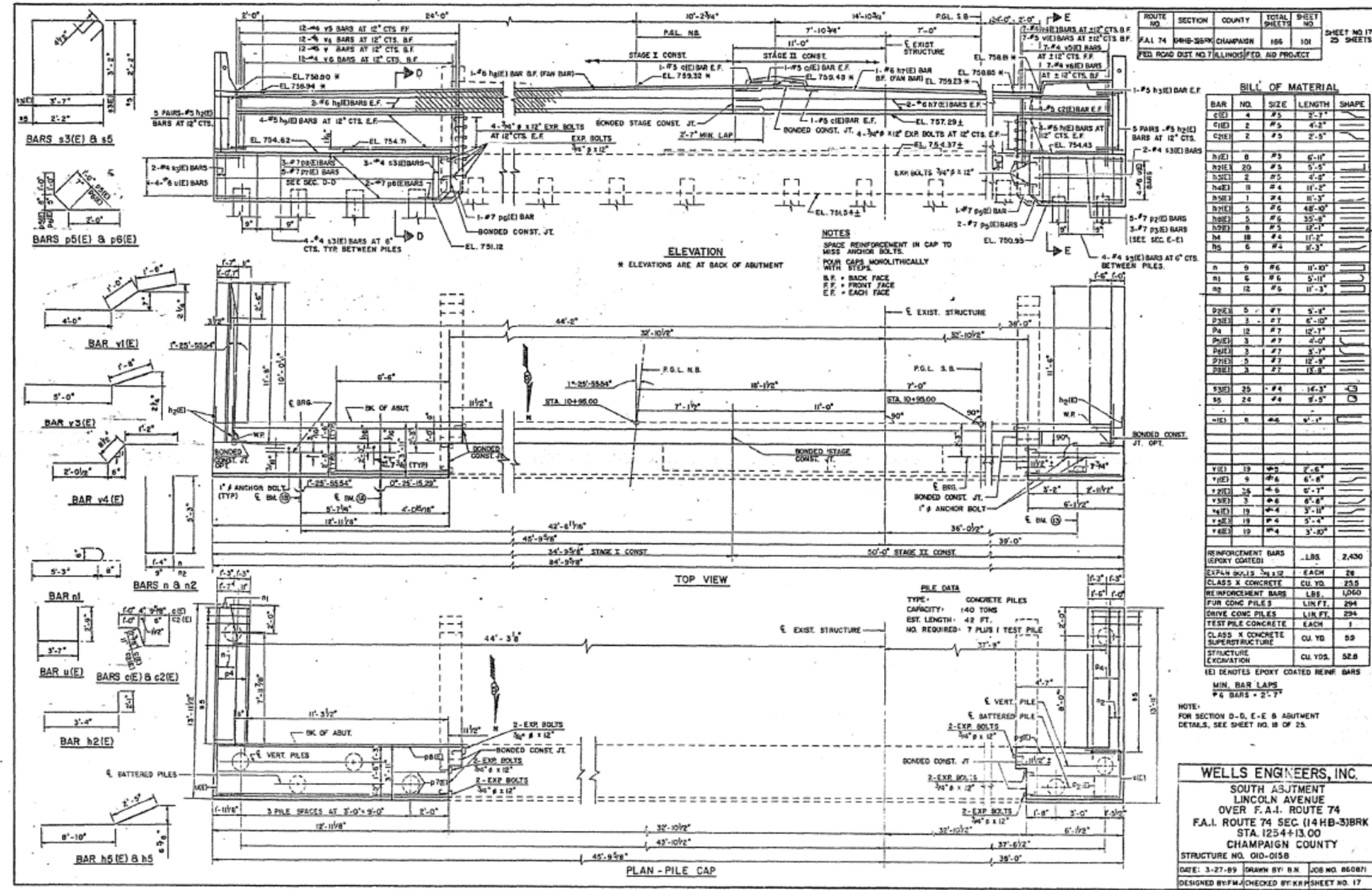
**AS-BUILT PLANS
FOR INFORMATION ONLY**

SCALE: SHEET 15 OF 16 SHEETS STA. TO STA.

F.A.U. RTE.	SECTION	COUNTY	TOTAL SHEETS	SHEET NO.
7177	(14HB-31)	CHAMPAIGN	19	18

CONTRACT NO. 70B43
ILLINOIS FED. AID PROJECT

AS-BUILT PLANS (1990) FOR INFORMATION ONLY S.N. 010-0158



BILL OF MATERIAL				
BAR NO.	SIZE	LENGTH	SHAPE	
C1E1	#5	3'-2"		
C1E2	#5	4'-2"		
C2E1	#5	2'-5"		
h1E1	#5	6'-11"		
h2E1	#5	5'-5"		
h3E1	#5	4'-2"		
h4E1	#4	11'-2"		
h5E1	#4	11'-3"		
h6E1	#4	48'-10"		
h7E1	#4	35'-8"		
h8E1	#5	12'-1"		
h9	#4	11'-2"		
h5	#4	11'-3"		
n1	#6	11'-10"		
n2	#6	5'-11"		
n3	#6	11'-3"		
p1E1	#7	5'-8"		
p2E1	#7	6'-10"		
p3	#7	12'-7"		
p4E1	#7	2'-0"		
p5E1	#7	3'-7"		
p6E1	#7	12'-9"		
p7E1	#7	11'-8"		
s1E1	#4	14'-3"		
s2	#4	9'-5"		
v1E1	#5	2'-6"		
v2E1	#6	6'-8"		
v3E1	#6	0'-7"		
v4E1	#6	8'-8"		
v5E1	#4	3'-11"		
v6E1	#4	5'-4"		
v7E1	#4	3'-10"		
REINFORCEMENT BARS (EPOXY COATED)				LBS. 2,430
EXPAN. BOLTS 3/4" x 12"				EACH 28
CLASS X CONCRETE				CU. YD. 25.5
REINFORCEMENT BARS				LBS. 1,060
FUR CONC. PILES				LIN. FT. 294
DRIVE CONC. PILES				LIN. FT. 294
TEST PILE CONCRETE				EACH 1
CLASS X CONCRETE SUPERSTRUCTURE				CU. YD. 59
STRUCTURE EXCAVATION				CU. YD. 52.8

WELLS ENGINEERS, INC.
SOUTH ABUTMENT
LINCOLN AVENUE
OVER F.A.I. ROUTE 74
F.A.I. ROUTE 74 SEC. (14HB-3)BRK
STA. 1254+13.00
CHAMPAIGN COUNTY
STRUCTURE NO. 010-0158
DATE: 3-27-89 DRAWN BY: B.N. JOB NO. 860871
DESIGNED BY: FM CHECKED BY: KR SHEET NO. 17