

STATE OF ILLINOIS
DEPARTMENT OF TRANSPORTATION
DIVISION OF HIGHWAYS

**PROPOSED
HIGHWAY PLANS**

FAP ROUTE 323 (US 36)
SECTION (13X)RS-1
PROJECT ACNHPP-0323 (034)
RESURFACING (3P)
MACON COUNTY

C-97-008-12

F.A.P. RTE.	SECTION	COUNTY	TOTAL SHEETS	SHEET NO.
323	(13X)RS-1	MACON	22	1
		ILLINOIS	CONTRACT NO. 74543	

D-97-005-12



FOR INDEX OF SHEETS, SEE SHEET NO. 2

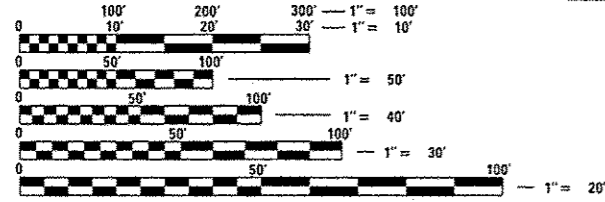
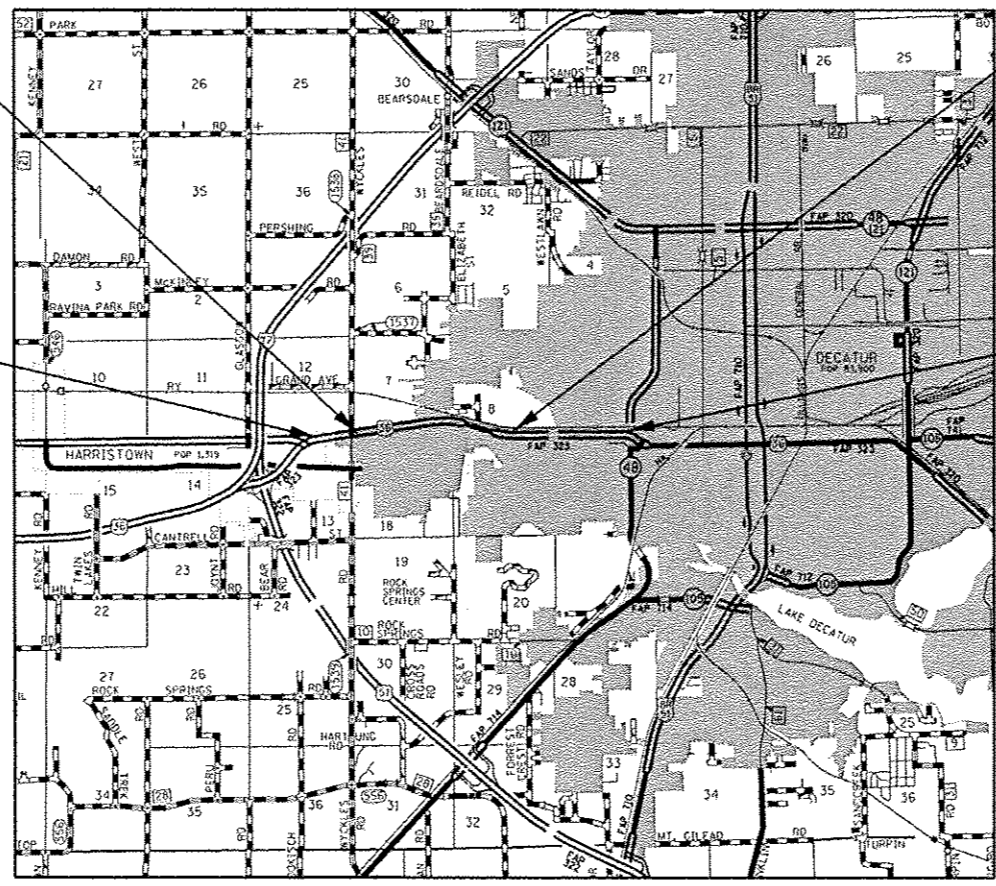
ADT (2015) = 8500

STATION EQUATION:
STA 650 + 00.00 BK =
STA 238 + 38.88 AH

STATION EQUATION:
STA 325 + 23.82 BK =
STA 406 + 21.94 AH

PROJECT BEGINS
STA 639 + 49

PROJECT ENDS
STA 462 + 08



FULL SIZE PLANS HAVE BEEN PREPARED USING STANDARD ENGINEERING SCALES. REDUCED SIZED PLANS WILL NOT CONFORM TO STANDARD SCALES. IN MAKING MEASUREMENTS ON REDUCED PLANS, THE ABOVE SCALES MAY BE USED.

J.U.L.I.E.
JOINT UTILITY LOCATION INFORMATION FOR EXCAVATION
1-800-892-0123
OR 811

PROJECT ENGINEER: MARK DAUGHERTY
PROJECT MANAGER: BRIAN LEWIS

CONTRACT NO. 74543

GROSS LENGTH = 15,381 FT. = 2.913 MILES
NET LENGTH = 15,183 FT. = 2.875 MILES

STATE OF ILLINOIS
DEPARTMENT OF TRANSPORTATION
DIVISION OF HIGHWAYS

SUBMITTED JANUARY 29 2016
Roger L. Driskill
DEPUTY DIRECTOR OF HIGHWAYS, REGION ENGINEER

MARCH 18 2016
Maura M. Addis PE
ENGINEER OF DESIGN AND ENVIRONMENT

MARCH 18 2016
Omer Osman PE
DIRECTOR OF HIGHWAYS, CHIEF ENGINEER

PRINTED BY THE AUTHORITY
OF THE STATE OF ILLINOIS

GENERAL NOTES

THIS SECTION SHALL BE CONSTRUCTED IN ACCORDANCE WITH THE PLANS; THE "STANDARD SPECIFICATIONS FOR ROAD AND BRIDGE CONSTRUCTION", ADOPTED APRIL 1, 2016; THE "SUPPLEMENTAL SPECIFICATIONS AND RECURRING SPECIAL PROVISIONS" INDICATED ON THE CHECK SHEET, AND "THE SPECIAL PROVISIONS" INCLUDED IN THE PROPOSAL.

THIS PROJECT IS LOCATED ON US ROUTE 36 IN MACON COUNTY FROM 0.2 MILES EAST OF HARRISTOWN BOULEVARD TO IL 48 IN DECATUR. THE PROJECT LENGTH IS 2.9 MILES. THE WORK INCLUDED IN SECTION (13X)RS-1 CONSISTS OF PAVEMENT PATCHING, HOT-MIX ASPHALT SURFACE REMOVAL, HOT-MIX ASPHALT RESURFACING, VIDEO DETECTION EQUIPMENT, PAVEMENT MARKING, AND ANY OTHER WORK NECESSARY TO COMPLETE THE SECTION.

THE EXISTING PAVEMENT SHALL BE PATCHED IN ACCORDANCE WITH SECTION 442 OF THE STANDARD SPECIFICATIONS AND THE SPECIAL PROVISIONS. THE QUANTITY OF PATCHING SHOWN ON THE PLANS IS AN ESTIMATE ONLY. THE FINAL LOCATIONS AND QUANTITY SHALL BE DETERMINED BY THE ENGINEER IN THE FIELD.

PAVEMENT MARKING SHALL BE APPLIED IN ACCORDANCE WITH SECTION 780 OF THE STANDARD SPECIFICATIONS. SHORT TERM PAVEMENT MARKING SHALL BE APPLIED TO THE MILLED SURFACE, LEVELING BINDER, AND HOT-MIX ASPHALT SURFACE COURSE AS SPECIFIED IN SECTION 703 OF THE STANDARD SPECIFICATIONS. PAINT SHALL BE USED ON MILLED SURFACES AND TAPE SHALL BE USED ON THE SURFACE COURSE.

ALL THE EXISTING PAVEMENT MARKINGS AROUND THE ISLANDS, ALL THE STOP BARS AND ALL THE ARROWS AT THE INTERSECTIONS WITHIN THE PROJECT LIMITS SHALL BE REPLACED IN THEIR ENTIRETY, ON EXISTING HMA SURFACES AND NEW.

THE CONTRACTOR SHALL PROVIDE INTERNET ACCESS TO THE HOT-MIX ASPHALT PLANT QUALITY CONTROL LAB SO THAT HOT-MIX ASPHALT PLANT REPORTS CAN BE E-MAILED TO THE DISTRICT HEADQUARTERS. THIS WORK SHALL BE INCLUDED IN THE COST OF ALL HOT-MIX ASPHALT ITEMS.

THE PAY ITEMS TEMPORARY RAMP AND TEMPORARY RAMP, SPECIAL HAVE BEEN INCLUDED FOR THE CONSTRUCTION OF TEMPORARY RAMPS IN ACCORDANCE WITH ARTICLE 406.08 OF THE STANDARD SPECIFICATIONS AND AS SPECIFIED IN THE SPECIAL PROVISIONS. THE COST SHALL INCLUDE BOTH THE INSTALLATION AND THE REMOVAL OF THE TEMPORARY RAMPS. TEMPORARY HMA RAMPS WILL BE REQUIRED IMMEDIATELY AFTER THE HOT-MIX ASPHALT SURFACE REMOVAL OPERATION HAS BEEN PERFORMED AND ANY SUBSEQUENT RESURFACING OPERATION NEEDING TEMPORARY RAMPS. THE CONTRACTOR SHALL CONSTRUCT TEMPORARY RAMPS (MIN. 2 FEET IN LENGTH) AT MANHOLES AND VALVE VAULTS. THIS WORK WILL BE CONSIDERED INCLUDED IN THE COST OF THE CONTRACT ITEMS INVOLVED AND NO EXTRA COMPENSATION WILL BE ALLOWED. TEMPORARY RAMPS AT SIDE ROADS AND ENTRANCES WILL BE PAID FOR AS TEMPORARY RAMP, SPECIAL.

THE RESIDENT ENGINEER SHALL BE THE SOLE JUDGE CONCERNING THE CURING TIME FOR ALL HOT-MIX ASPHALT COURSES.

THE MAXIMUM ALLOWABLE ELEVATION DIFFERENCE BETWEEN PAVEMENT OPEN TO TRAFFIC AND ADJACENT SHOULDER SHALL BE 1.5 INCHES.

THE POLYMERIZED HMA SURFACE COURSE SHALL BE CONSTRUCTED ACCORDING TO THE SPECIAL PROVISION "HOT-MIX ASPHALT - PAY FOR PERFORMANCE USING PERCENT WITHIN LIMITS - JOBSITE SAMPLING."

THE FOLLOWING MIXTURE REQUIREMENTS ARE APPLICABLE TO THIS PROJECT:

APPLICATION	AC/PG	DESIGN AIR VOIDS	MIXTURE COMPOSITION	FRICTION AGGREGATE
POLYMERIZED HMA SURFACE COURSE MIX "D" N90	SBS PG 70-22	4.0% @ N=90	IL - 9.5	MIXTURE D
LEVELING BINDER	PG 64-22	4.0% @ N=90	IL - 9.5	N/A
HMA SHOULDERS	PG 64-22	4.0% @ N=90	IL - 9.5	MIXTURE C
PATCHING	PG 64-22	4.0% @ N=90	IL - 19.0	N/A

INDEX OF SHEETS

SHEET NO	TITLE
1	COVER SHEET
2	GENERAL NOTES, INDEX OF SHEETS
3-4	SUMMARY OF QUANTITIES
5-6	TYPICAL SECTIONS
7	RESURFACING SCHEDULE
8	PAVEMENT MARKING SCHEDULE
9-10	TIES FOR SURVEY MARKERS
11-16	PLAN SHEETS
17-20	PAVEMENT MARKING DETAILS
21-22	TRAFFIC SIGNAL SHEETS

THE FOLLOWING STANDARDS ARE A PART OF THESE PLANS AND ARE INCLUDED FOLLOWING THE LAST NUMBERED SHEET OF THE PLANS.

000001-06	STANDARD SYMBOLS, ABBREVIATIONS, AND PATTERNS
442201-03	CLASS C AND D PATCHES
642001-02	SHOULDER RUMBLE STRIPS, 16 IN.
701101-05	OFF-ROAD OPERATIONS, MULTILANE, 15' TO 24" FROM PAVEMENT EDGE
701421-07	LANE CLOSURE, MULTILANE, DAY OPERATIONS ONLY, FOR SPEEDS >= 45 MPH TO 55 MPH
701422-08	LANE CLOSURE, MULTILANE, FOR SPEEDS >= 45 MPH TO 55 MPH
701426-08	LANE CLOSURE, MULTILANE, INTERMITTENT OR MOVING OPERATION, FOR SPEEDS >= 45 MPH
701701-10	URBAN LANE CLOSURE, MULTILANE INTERSECTION
701901-05	TRAFFIC CONTROL DEVICES
780001-05	TYPICAL PAVEMENT MARKINGS
781001-04	TYPICAL APPLICATIONS RAISED REFLECTIVE PAVEMENT MARKERS

FILE NAME =	USER NAME = staffenn	DESIGNED -	REVISED -	STATE OF ILLINOIS DEPARTMENT OF TRANSPORTATION	GENERAL NOTES & INDEX OF SHEETS	F.A.P. RTE.	SECTION	COUNTY	TOTAL SHEETS	SHEET NO.	
pub\1\284EBID\INTEG\illinois.gov\PI\DOT\ND	pub\1\284EBID\INTEG\illinois.gov\PI\DOT\ND	CHECKED -	REVISED -			323	(13X)-RS-1	Macon	22	2	
Default	Default	DATE -	REVISED -			CONTRACT NO. 74543		ILLINOIS FED. AID PROJECT			
						SCALE:	SHEET	OF	SHEETS	STA.	TO

80% FED
20% STATE
URBAN

80% FED
20% STATE
URBAN

SUMMARY OF QUANTITIES			TOTAL QUANTITIES	CONSTRUCTION TYPE CODE	
CODE NO	ITEM	UNIT		0005	0021
40600290	BITUMINOUS MATERIALS (TACK COAT)	POUND	80344	80344	
40600645	LEVELING BINDER (MACHINE METHOD), N90	TON	3842	3842	
40600990	TEMPORARY RAMP	SQ YD	300	300	
40603545	POLYMERIZED HOT-MIX ASPHALT SURFACE COURSE, MIX "D", N90	TON	7702	7702	
44000155	HOT-MIX ASPHALT SURFACE REMOVAL, 1 1/2"	SQ YD	41634	41634	
44000158	HOT-MIX ASPHALT SURFACE REMOVAL, 2 1/4"	SQ YD	91272	91272	
44201815	CLASS D PATCHES, TYPE II, 14 INCH	SQ YD	294	294	
44201819	CLASS D PATCHES, TYPE III, 14 INCH	SQ YD	16	16	
48203100	HOT-MIX ASPHALT SHOULDERS	TON	3530	3530	
64200116	SHOULDER RUMBLE STRIPS, 16 INCH	FOOT	50470	50470	
67000500	ENGINEER'S FIELD OFFICE, TYPE B	CAL MO	4	4	
67100100	MOBILIZATION	L SUM	1	1	
70100310	TRAFFIC CONTROL AND PROTECTION, STANDARD	LSUM	1	1	
	701421				

SUMMARY OF QUANTITIES			TOTAL QUANTITIES	CONSTRUCTION TYPE CODE	
CODE NO	ITEM	UNIT		0005	0021
70100320	TRAFFIC CONTROL AND PROTECTION, STANDARD	LSUM	1	1	
	701422				
70102635	TRAFFIC CONTROL AND PROTECTION, STANDARD	LSUM	1	1	
	701701				
70103815	TRAFFIC CONTROL SURVEILLANCE	CAL DA	1	1	
70300100	SHORT TERM PAVEMENT MARKING	FOOT	20131	20131	
70300150	SHORT TERM PAVEMENT MARKING REMOVAL	SQ FT	2237	2237	
70300210	TEMPORARY PAVEMENT MARKING LETTERS AND SYMBOLS	SQ FT	640	640	
70300220	TEMPORARY PAVEMENT MARKING - LINE 4"	FOOT	61890	61890	
70300240	TEMPORARY PAVEMENT MARKING - LINE 6"	FOOT	10672	10672	
70300260	TEMPORARY PAVEMENT MARKING - LINE 12"	FOOT	1739	1739	
70300280	TEMPORARY PAVEMENT MARKING - LINE 24"	FOOT	472	472	
* 78000100	THERMOPLASTIC PAVEMENT MARKING - LETTERS AND SYMBOLS	SQ FT	640	640	
* 78000200	THERMOPLASTIC PAVEMENT MARKING - LINE 4"	FOOT	61890	61890	

* SPECIALTY ITEM

80% FED
20% STATE
URBAN

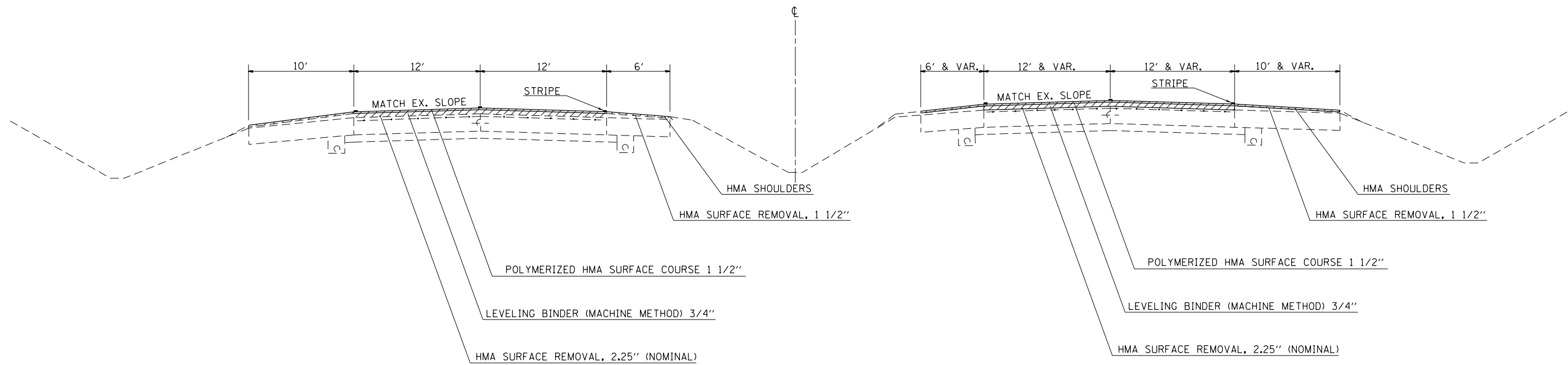
80% FED
20% STATE
URBAN

SUMMARY OF QUANTITIES			TOTAL QUANTITIES	CONSTRUCTION TYPE CODE	
CODE NO	ITEM	UNIT		0005	0021
* 78000400	THERMOPLASTIC PAVEMENT MARKING - LINE 6"	FOOT	10672	10672	
* 78000500	THERMOPLASTIC PAVEMENT MARKING - LINE 8"	FOOT	1575	1575	
* 78000600	THERMOPLASTIC PAVEMENT MARKING - LINE 12"	FOOT	1739	1739	
* 78000650	THERMOPLASTIC PAVEMENT MARKING - LINE 24"	FOOT	472	472	
* 78100100	RAISED REFLECTIVE PAVEMENT MARKER	EACH	549	549	
* 89502300	REMOVE ELECTRIC CABLE FROM CONDUIT	FOOT	1914		1914
* 89502375	REMOVE EXISTING TRAFFIC SIGNAL EQUIPMENT	EACH	2		2
X4060995	TEMPORARY RAMP, SPECIAL	SQ YD	443	443	
X7015005	CHANGEABLE MESSAGE SIGN	CAL DA	28	28	
* X7830068	GROOVING FOR RECESSED PAVEMENT MARKING, LETTERS, NUMBERS AND SYMBOLS	SQ FT	640	640	
* X7830070	GROOVING FOR RECESSED PAVEMENT MARKING 5"	FOOT	61890	61890	
* X7830074	GROOVING FOR RECESSED PAVEMENT MARKING 7"	FOOT	10672	10672	
* X7830076	GROOVING FOR RECESSED PAVEMENT MARKING 9"	FOOT	1575	1575	

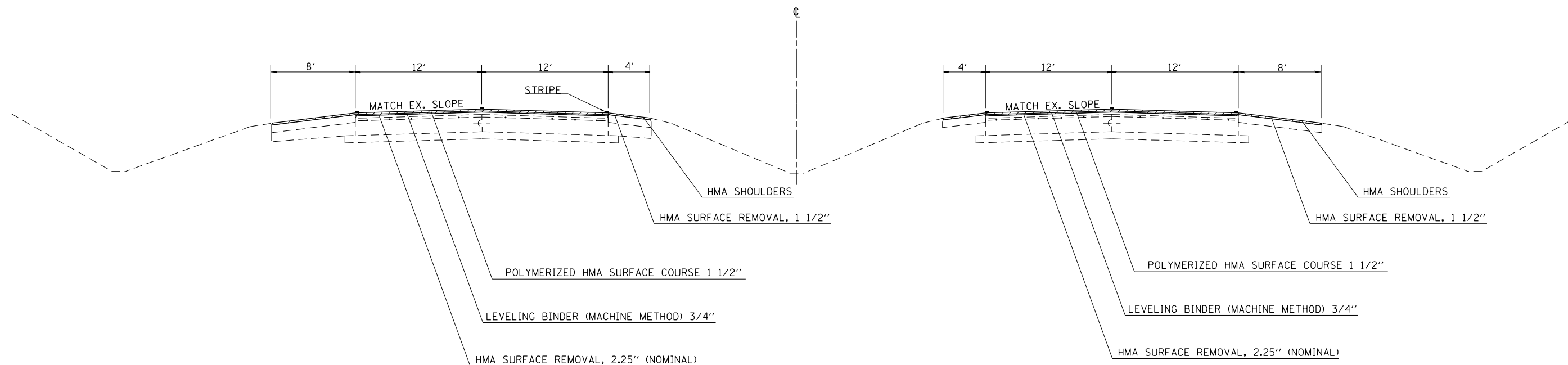
SUMMARY OF QUANTITIES			TOTAL QUANTITIES	CONSTRUCTION TYPE CODE	
CODE NO	ITEM	UNIT		0005	0021
* X7830078	GROOVING FOR RECESSED PAVEMENT MARKING 13"	FOOT	1739	1739	
* X7830090	GROOVING FOR RECESSED PAVEMENT MARKING 25"	FOOT	472	472	
Z0001800	APPROACH SLAB REPAIR (PARTIAL DEPTH)	SQ YD	20	20	
Z0033072	VIDEO VEHICLE DETECTION SYSTEM	EACH	2		2
Z0049799	PROTECTING OR RESETTING SURVEY MARKERS	EACH	11	11	

* SPECIALTY ITEM

FILE NAME =	USER NAME = steffannk	DESIGNED -	REVISED -	STATE OF ILLINOIS DEPARTMENT OF TRANSPORTATION	SUMMARY OF QUANTITIES	F.A.P. RTE.	SECTION	COUNTY	TOTAL SHEETS	SHEET NO.	
pw\NL084EB10NTEG\illinois.gov\PI00T\Do	Documents\DOT Offices\District 7\Projects\745	DRAWN	REVISED			323	(13X)-RS-1	Mocon	22	4	
	PLOT SCALE = 1/2" = 100'	CHECKED -	REVISED -			CONTRACT NO. 74543					
Default	PLOT DATE = 1/29/2010	DATE -	REVISED -			ILLINOIS FED. AID PROJECT					



STATION 639+40 TO STATION 647+83



STATION 238+39 TO STATION 284+33

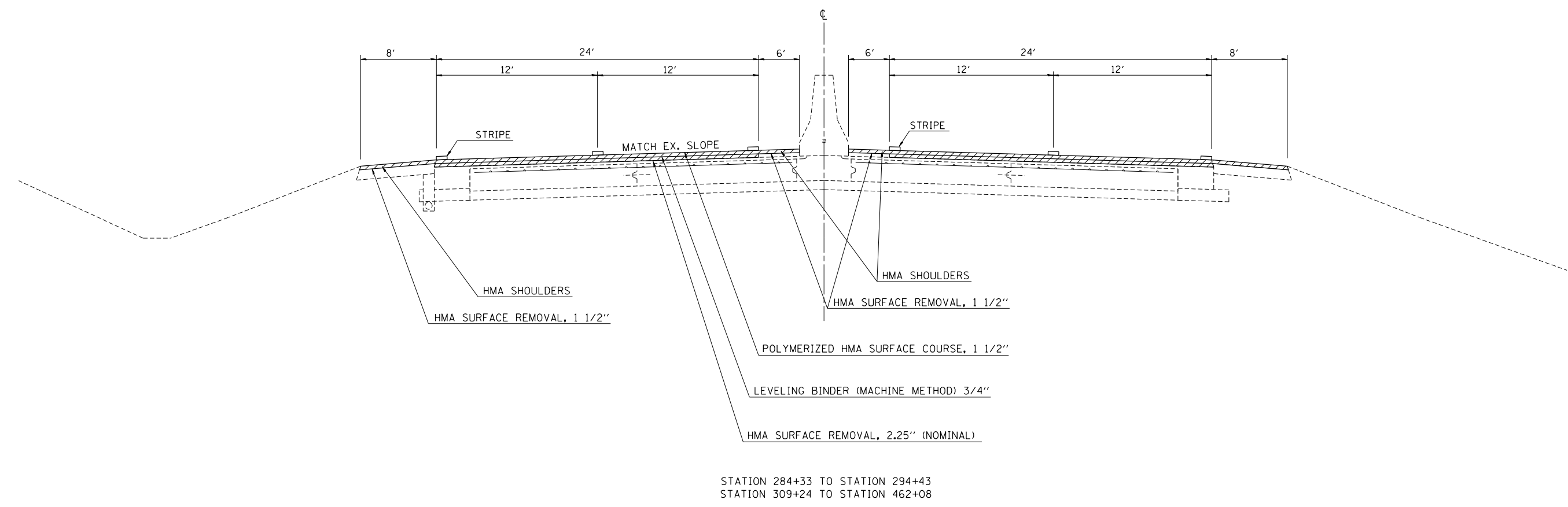
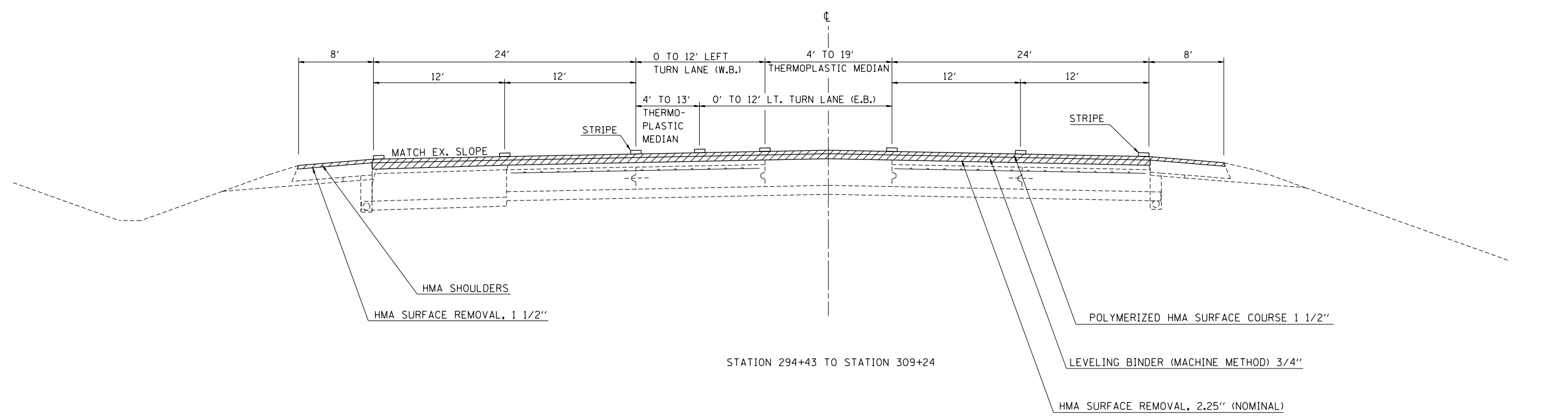
FILE NAME =	USER NAME = steffenmk	DESIGNED -	REVISED -
pw:\IL\084EBIDINTEG.illinois.gov\PI\DOT\Documents\DOT Offices\District 7\Projects\7453\DRAWING\CAD\Sheets\0774543-sht-typicals		DRAWN -	REVISED -
Default	PLOT SCALE = 100.0000' / in.	CHECKED -	REVISED -
	PLOT DATE = 1/29/2016	DATE -	REVISED -

**STATE OF ILLINOIS
DEPARTMENT OF TRANSPORTATION**

PROPOSED TYPICALS

SCALE: SHEET OF SHEETS STA. TO STA.

F.A.P. RTE.	SECTION	COUNTY	TOTAL SHEETS	SHEET NO.
323	(13X)-RS-1	Macon	22	5
ILLINOIS FED. AID PROJECT			CONTRACT NO. 74543	



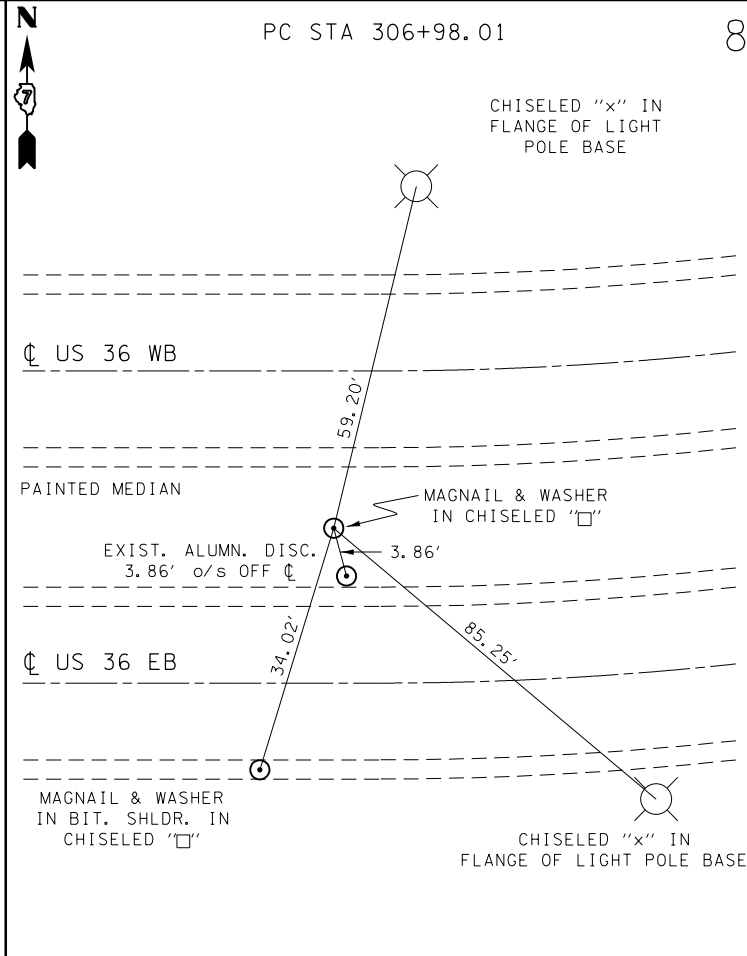
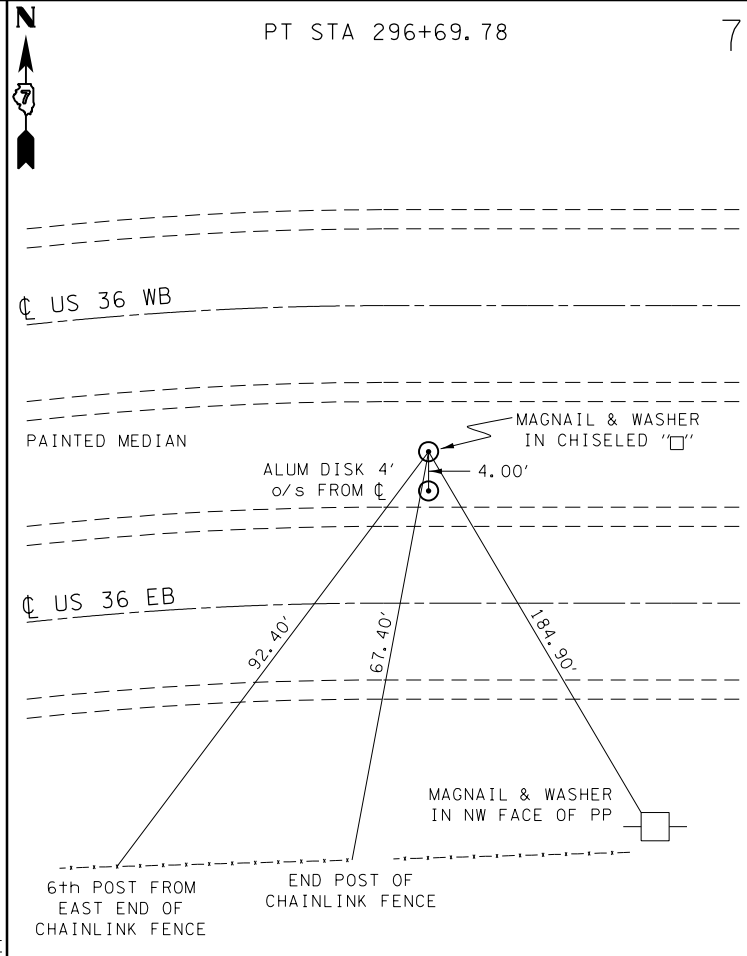
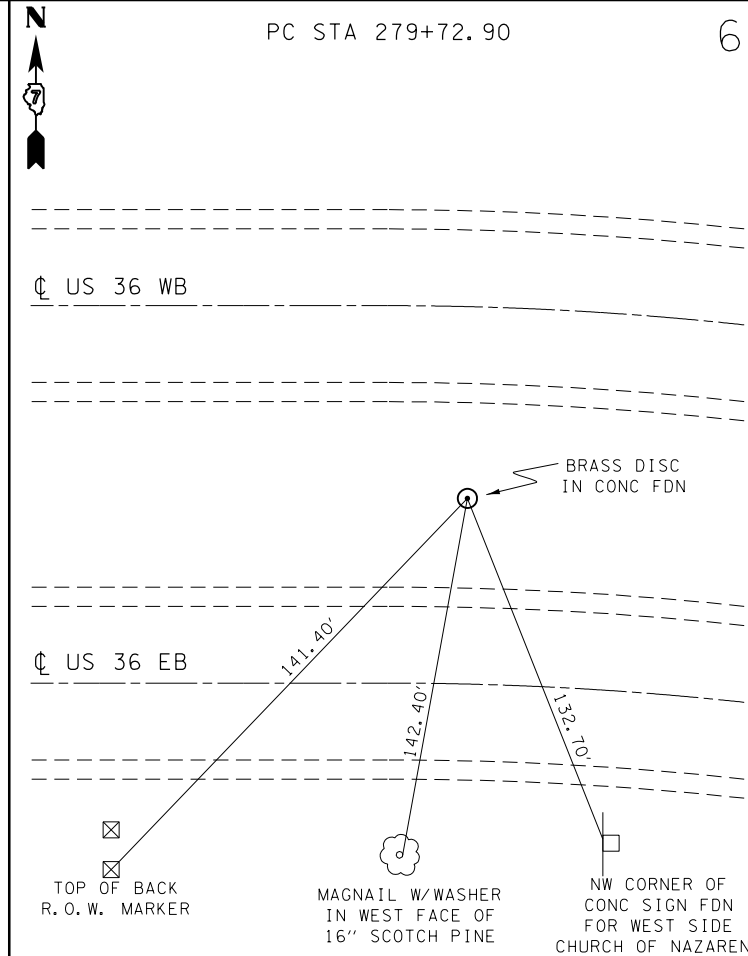
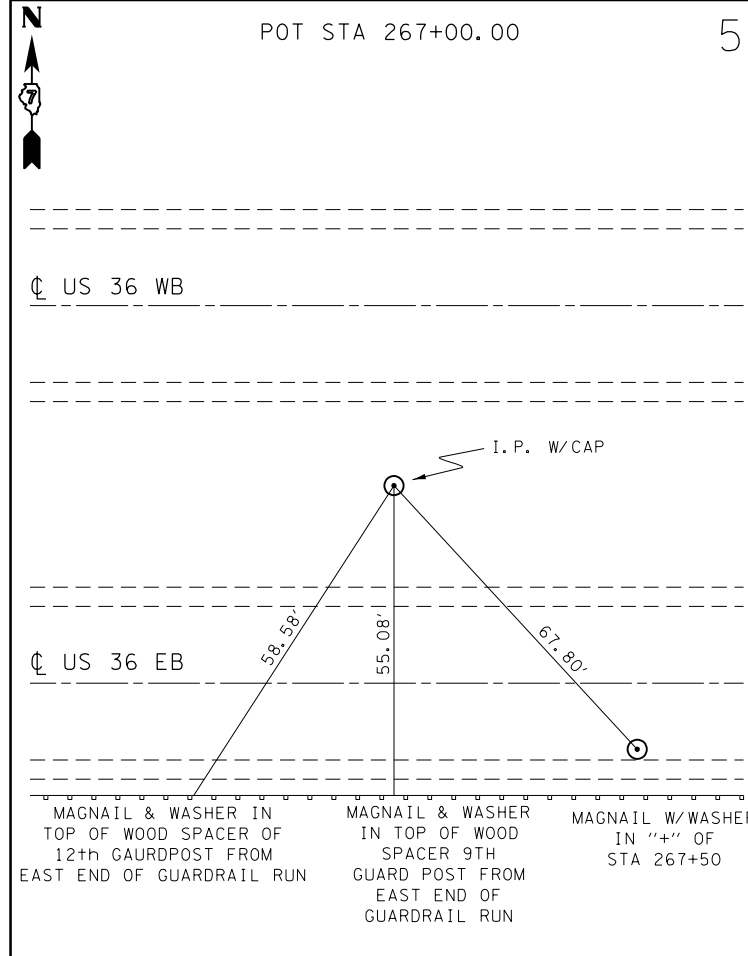
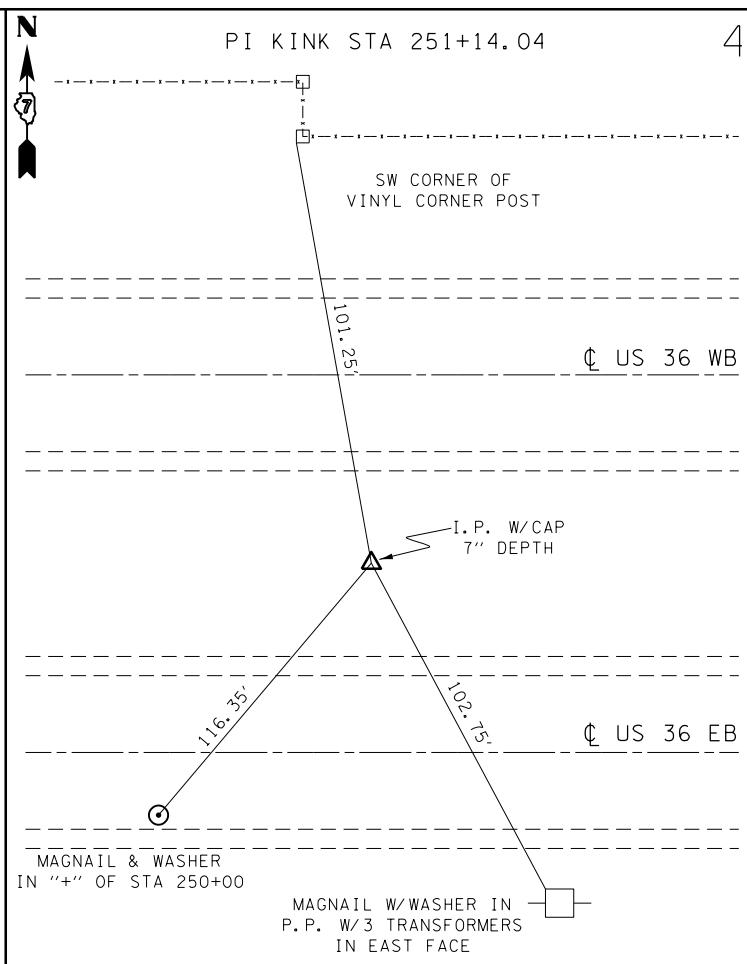
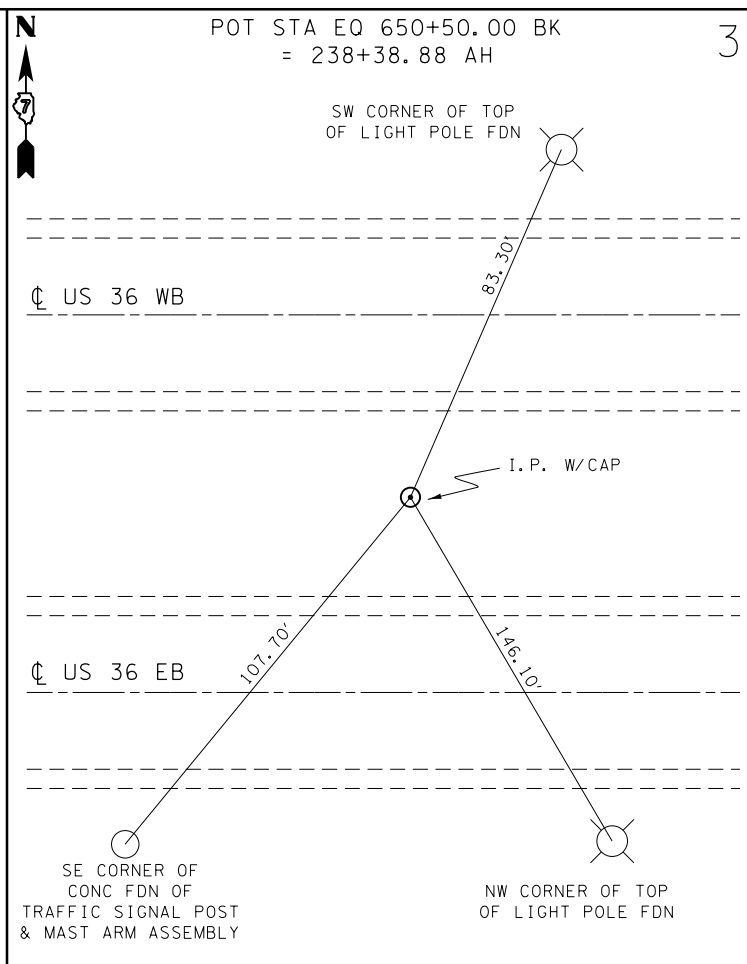
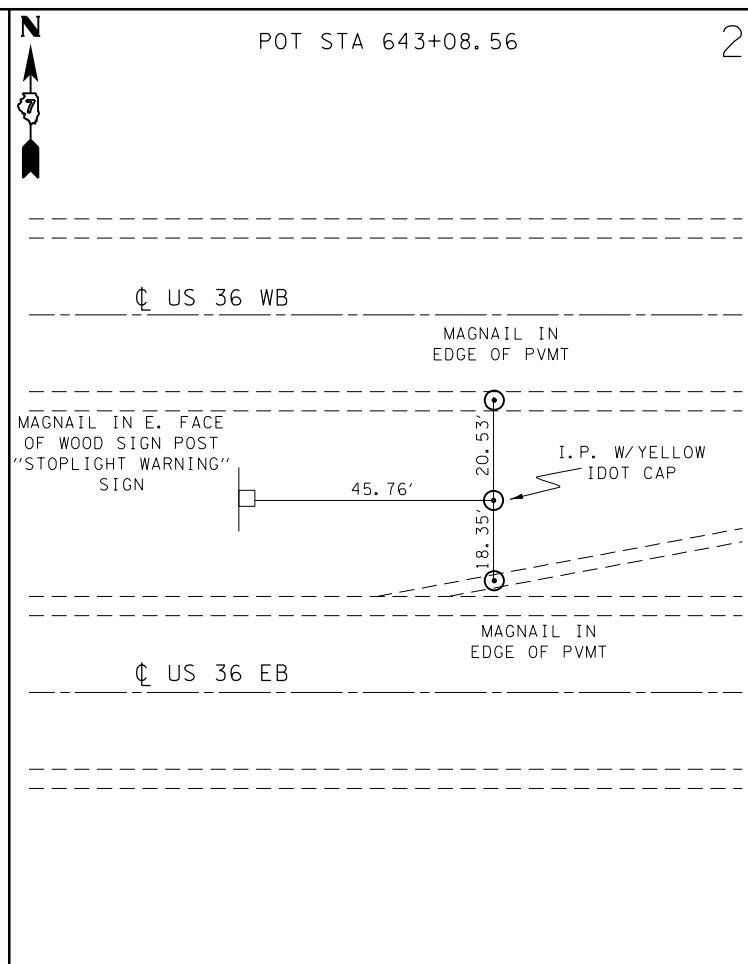
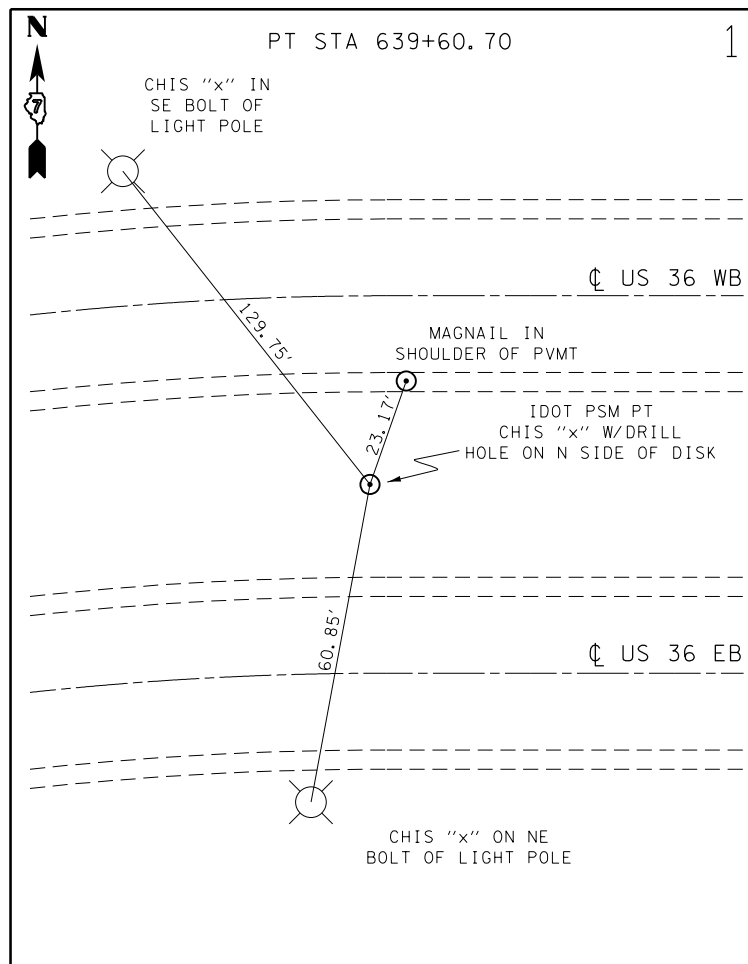
FILE NAME =	USER NAME = steffenmk	DESIGNED -	REVISED -	STATE OF ILLINOIS DEPARTMENT OF TRANSPORTATION	PROPOSED TYPICALS				F.A.P. RTE.	SECTION	COUNTY	TOTAL SHEETS	SHEET NO.
pw:\11\084EBIDINTEG.illinois.gov\PWIDOT\Documents\IDOT Offices\District 7\Projects\7453\Drawings\CAD\Sheets\0774543-sht-typicals	DRAWN -	REVISIONS -	REVISIONS -						323	(13X)-RS-1	Macon	22	6
Default	PLOT SCALE = 100.0000' / 1in.	CHECKED -	REVISED -		SCALE: SHEET OF SHEETS STA. TO STA.				CONTRACT NO. 74543				
	PLOT DATE = 1/29/2016	DATE -	REVISED -		ILLINOIS FED. AID PROJECT								

TABULATION OF RESURFACING QUANTITIES - WESTBOUND												
LOCATION	TOTAL ROADWAY WIDTH	LENGTH	AREA	TEMPORARY RAMP	HMA SURFACE REMOVAL 2.25 IN	HMA SURFACE REMOVAL 1.5 IN	BITUMINOUS MATERIALS TACK COAT	LEVELING BINDER (MM) N 90 0.75 IN	POLY HMA SURF CSE MIX D, N 90 IL 9.5, 1.5 IN	HMA SHOULDERS		
	FT	FT	SQ YD	SQ YD	SQ YD	SQ YD	POUND	TON	TON	LEFT SIDE	RIGHT SIDE	
										TON	TON	
STA. 639 + 40 TO 646 + 38	24	698	1861	33	1861	1241	1815	78	157	66	39	
STA. 646 + 38 TO 650 + 50	24 & VAR.	412	2047		2047	251	1495	86	172	3	18	
STATION EQUATION												
STA. 238 + 39 TO 240 + 39	48	200	1067		1067	178	800	45	90	8	8	
STA. 240 + 39 TO 243 + 57	24 & VAR.	318	1208		1208	408	999	51	102	23	12	
STA. 243 + 57 TO 274 + 22	24	3065	9273	33	9273	4087	8098	390	783	231	116	
STA. 274 + 22 TO 280 + 59	24 & VAR.	637	2579		2579	631	2025	109	217	30	24	
STA. 280 + 59 TO 284 + 33	24	374	997		997	499	898	42	84	28	14	
STA. 284 + 33 TO 294 + 43	24	1010	2693		2693	1571	2525	113	227	76	57	
STA. 294 + 43 TO 300 + 72	24 & VAR.	629	2474		2474	559	1922	104	209	47		
STA. 300 + 72 TO 310 + 63	24 & VAR.	991	4340		4340	671	3231	183	366	57		
STA. 310 + 63 TO 325 + 24	24	1461	3896		3896	2273	3653	164	329	110	83	
STATION EQUATION												
STA. 406 + 22 TO 420 + 56	24	1434	3824	33	3824	2231	3585	161	323	108	81	
BRIDGE OMISSION												
STA. 422 + 54 TO 462 + 08	24	3954	10544	67	10544	6151	9885	444	890	298	224	
TOTALS		15,183	46,804	167	46,804	20,750	40,930	1,970	3,949	1,083	677	

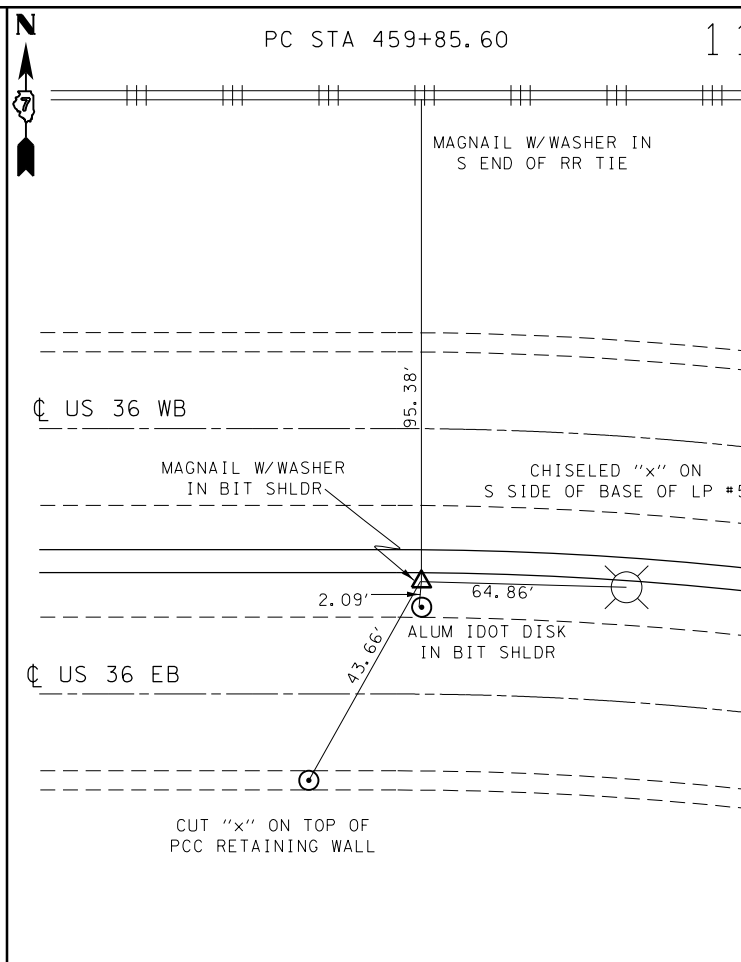
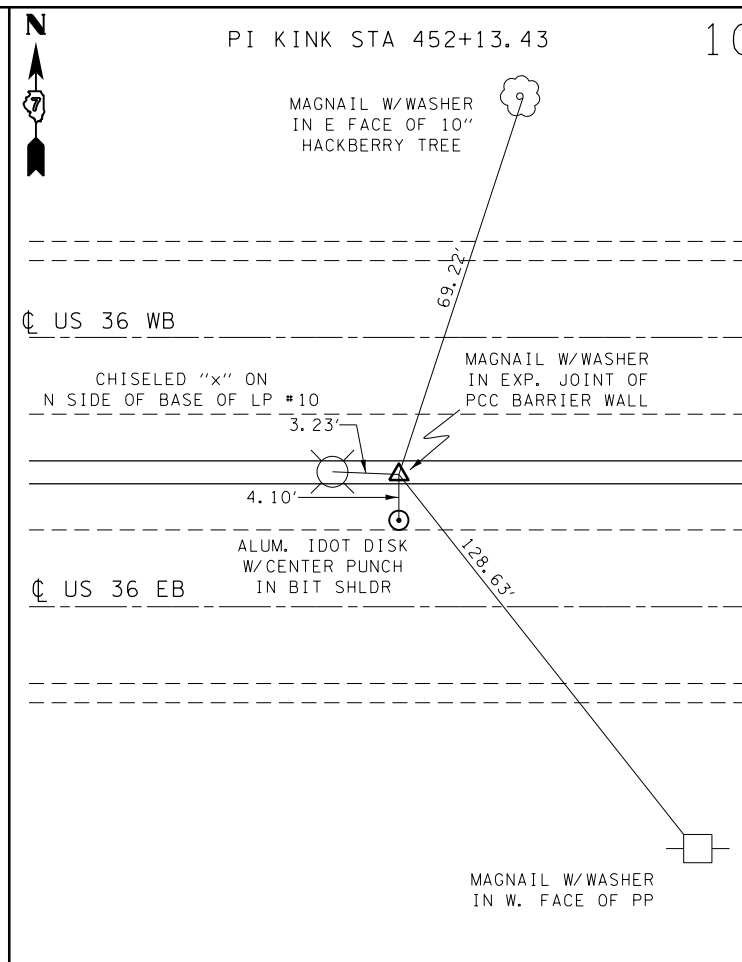
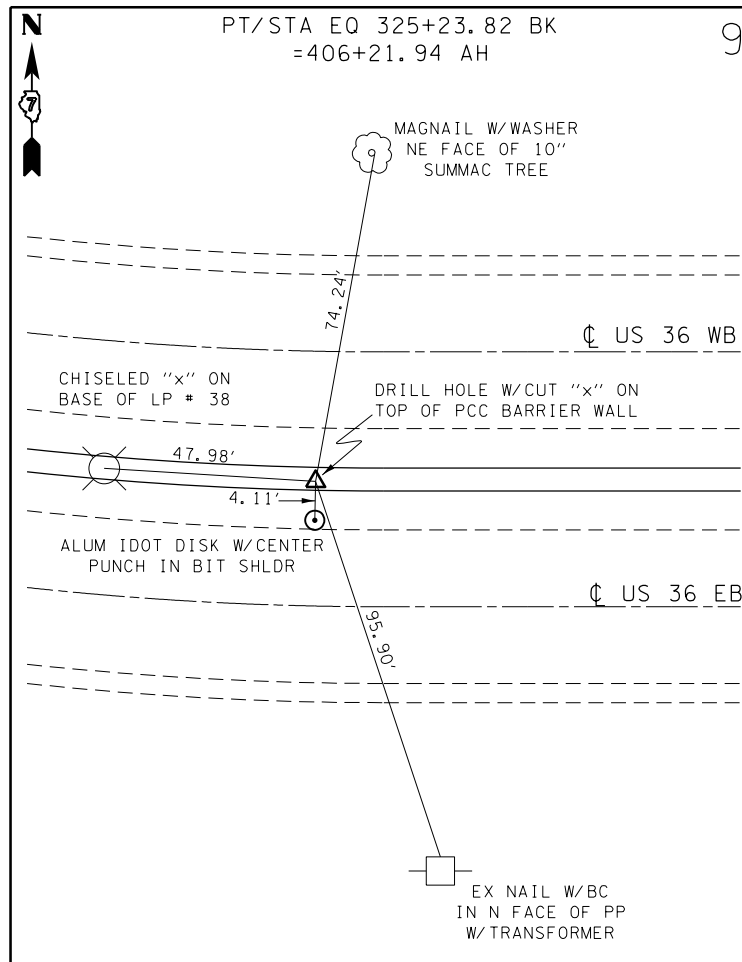
TABULATION OF RESURFACING QUANTITIES - EASTBOUND												
LOCATION	TOTAL ROADWAY WIDTH	LENGTH	AREA	TEMPORARY RAMP	HMA SURFACE REMOVAL 2.25 IN	HMA SURFACE REMOVAL 1.5 IN	BITUMINOUS MATERIALS TACK COAT	LEVELING BINDER (MM) N 90 0.75 IN	POLY HMA SURF CSE MIX D, CL 90 TY 9.5, 1.5 IN	HMA SHOULDERS		
	FT	FT	SQ YD	SQ YD	SQ YD	SQ YD	POUND	TON	TON	LEFT SIDE	RIGHT SIDE	
											TON	TON
STA. 639 + 40 TO 650 + 50	24 & VAR.	1110	4757	33	4757	1393	3838	200	401	54	64	
STATION EQUATION												
STA. 238 + 39 TO 249 + 56	24	1117	2979		2979	1489	2681	125	252	42	84	
STA. 249 + 56 TO 262 + 35	24 & VAR.	1279	4201		4201	1467	3496	177	354	62	62	
STA. 262 + 35 TO 270 + 80	24	845	2253		2253	1127	2028	95	190	32	64	
STA. 270 + 80 TO 277 + 45	24 & VAR.	665	2610		2610	670	2063	110	220	22	35	
STA. 277 + 45 TO 284 + 34	24	689	1837		1837	919	1654	77	155	26	52	
STA. 284 + 34 TO 294 + 40	24	1006	2683		2683	1798	2620	113	227	77	76	
STA. 294 + 40 TO 309 + 24	24 & VAR.	1484	4514		4514	1151	3565	190	381		98	
STA. 309 + 24 TO 325 + 24	24	1600	4267		4267	2489	4000	180	360	91	120	
STATION EQUATION												
STA. 406 + 22 TO 420 + 56	24	1434	3824	33	3824	2231	3585	161	323	81	108	
BRIDGE OMISSION												
STA. 422 + 54 TO 462 + 08	24	3954	10544	67	10544	6151	9885	444	890	224	298	
SUB-TOTAL - EASTBOUND				133	44,469	20,884	39,414	1,872	3,753	711	1,060	
SUB-TOTAL - WESTBOUND				167	46,804	20,750	40,930	1,970	3,949	1,083	677	
GRAND-TOTAL				300	91,272	41,634	80,344	3,842	7,702	1,794	1,736	

PAVEMENT MARKING SCHEDULE

STATION TO STATION	THERMOPLASTIC PAVEMENT MARKING - LTRS & SYMB (WHITE)	GROOVING FOR RECESSED PAVEMENT MARKING - LETTERS, NUMBERS AND SYMBOLS	THERMOPLASTIC PAVEMENT MARKING - LINE 4" (YELLOW)	THERMOPLASTIC PAVEMENT MARKING - LINE 4" (WHITE)	GROOVING FOR RECESSED PAVEMENT MARKING 5"	THERMOPLASTIC PAVEMENT MARKING - LINE 6" (WHITE)	GROOVING FOR RECESSED PAVEMENT MARKING 7"	THERMOPLASTIC PAVEMENT MARKING - LINE 8" (WHITE)	GROOVING FOR RECESSED PAVEMENT MARKING 9"	THERMOPLASTIC PAVEMENT MARKING - LINE 12" (WHITE)	THERMOPLASTIC PAVEMENT MARKING - LINE 12" (YELLOW)	GROOVING FOR RECESSED PAVEMENT MARKING 13"	THERMOPLASTIC PAVEMENT MARKING - LINE 24" (WHITE)	GROOVING FOR RECESSED PAVEMENT MARKING 25"	RAISED REFLECTIVE PAVEMENT MARKER (CRYSTAL ONE-WAY)	RAISED REFLECTIVE PAVEMENT MARKER (AMBER ONE-WAY)
	SO FT	SO FT	FOOT	FOOT	FOOT	FOOT	FOOT	FOOT	FOOT	FOOT	FOOT	FOOT	FOOT	FOOT	EACH	EACH
639+40 TO 650+50	296.4	296.4	1230	1740	2970	1618	1618	627	627	467		467	218	218	57	
STATION EQUATION																
238+39 TO 243+57			1040	1040	2080	678	678					0			26	
243+57 TO 249+56			1200	1200	2400	300	300					0			16	
249+56 TO 262+35	140.4	140.4	2560	2560	5120	1480	1480	275	275	118		118	134	134	57	
262+35 TO 270+80			1700	1700	3400	422	422					0			21	
270+80 TO 280+59	78	78	1960	1960	3920	789	789	309	309	195		195	60	60	35	
280+59 TO 294+00			2760	2760	5520	670	670					0			35	
294+00 TO 310+63	124.8	124.8	6480	3240	9720	1291	1291	364	364	264	695	959	60	60	43	84
310+63 TO 325+24			2600	2600	5200	730	730					0			38	
STATION EQUATION																
406+22 TO 420+56			2870	2870	5740	717	717					0			37	
BRIDGE OMISSION																
422+54 TO 462+08			7910	7910	15820	1977	1977					0			100	
TOTALS	639.6	639.6	32310	29580	61890	10672	10672	1575	1575	1044	695	1739	472	472	465	84



FILE NAME =	USER NAME = steffenmk	DESIGNED -	REVISED -	STATE OF ILLINOIS DEPARTMENT OF TRANSPORTATION	SURVEY TIES			F.A.P. RTE.	SECTION	COUNTY	TOTAL SHEETS	SHEET NO.
pw:\IL\084EBIDINTEG\illinois.gov\PI\DOT\Documents\DOT Offices\District 7\Projects\7453\Drawings\CAD\Sheets\0774543-sht-ties.dgn	PLOT SCALE = 100.0000' / in.	CHECKED -	REVISED -					323	(13X)-RS-1	Macon	22	9
Default	PLOT DATE = 1/29/2016	DATE -	REVISED -		SCALE: SHEET OF SHEETS STA. TO STA.			CONTRACT NO. 74543				
					ILLINOIS FED. AID PROJECT							



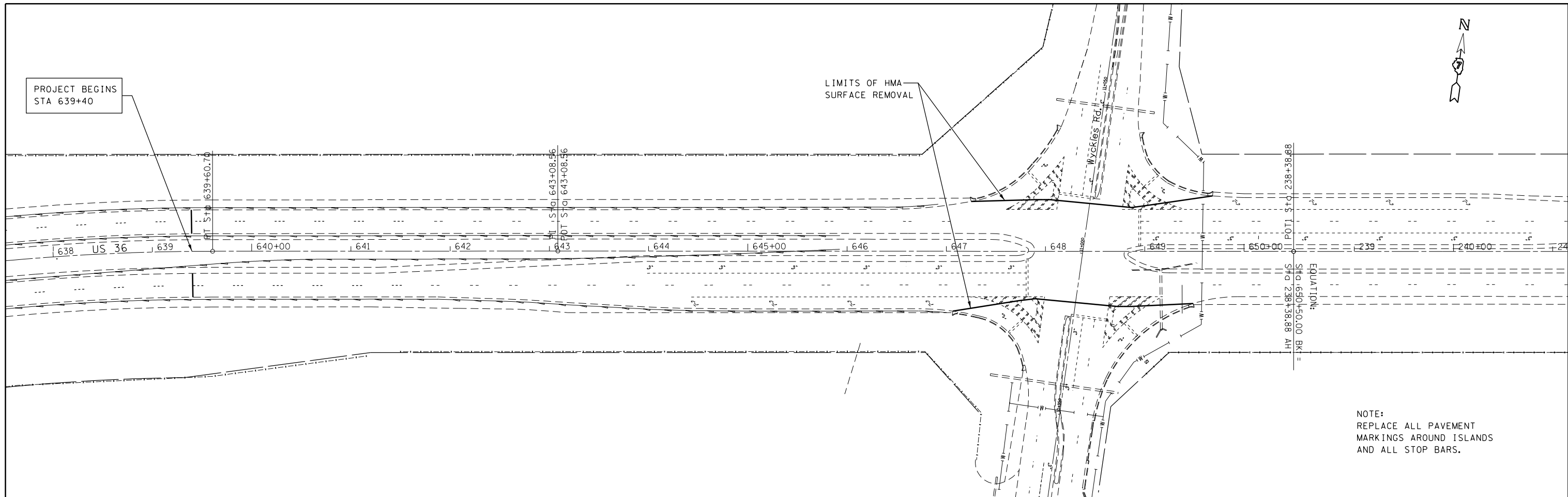
FILE NAME =	USER NAME = steffenk	DESIGNED -	REVISED -
p:\11\084EBIDINTEG.illinois.gov\PIWIDOT\Documents\IDOT Offices\District 7\Projects\7453\DRAWING\CADsheets\0774543-sht-ties.dgn		CHECKED -	REVISED -
Default	PLOT SCALE = 100.0000' / in.	DATE -	REVISED -
	PLOT DATE = 1/29/2016		

STATE OF ILLINOIS
DEPARTMENT OF TRANSPORTATION

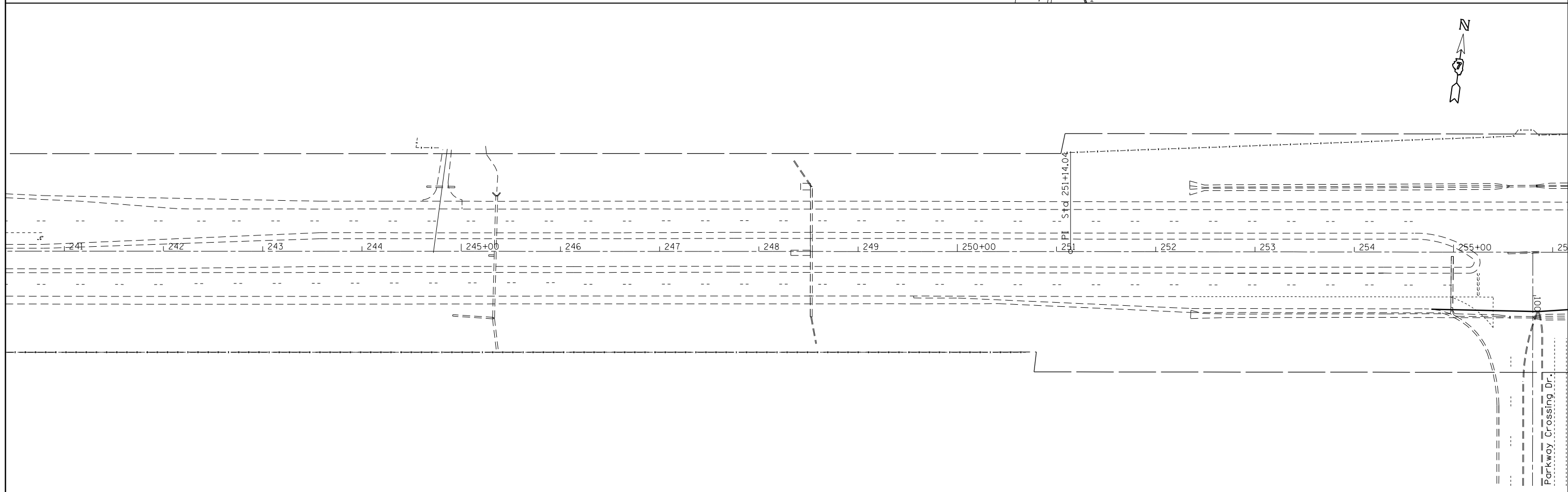
SURVEY TIES

SCALE: SHEET OF SHEETS STA. TO STA.

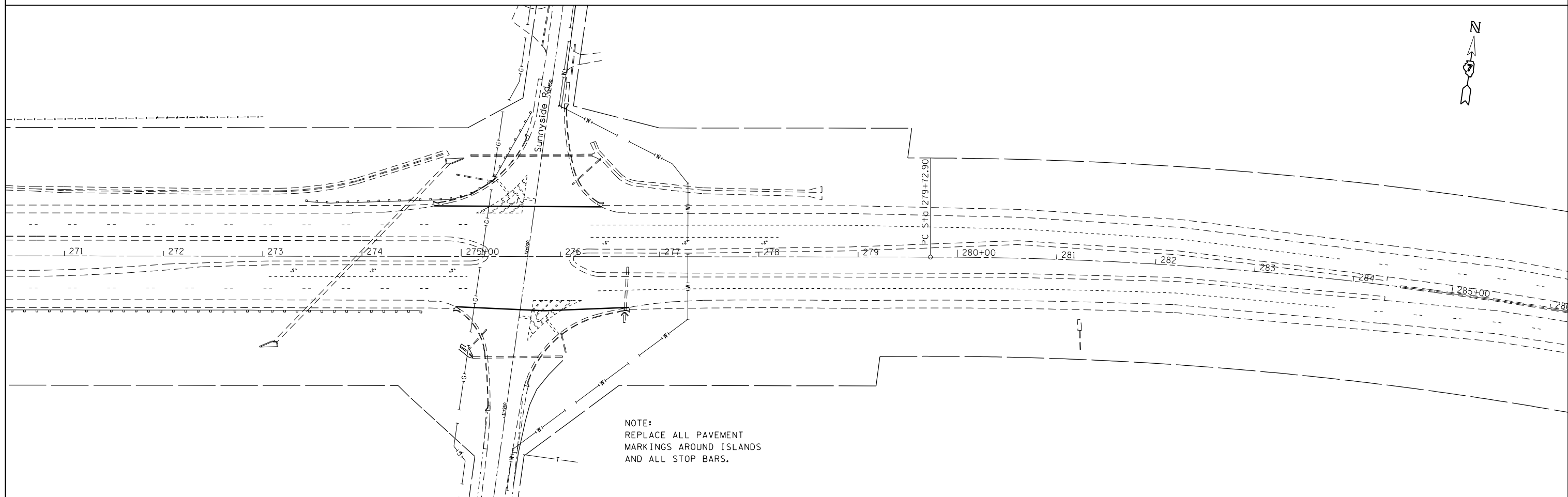
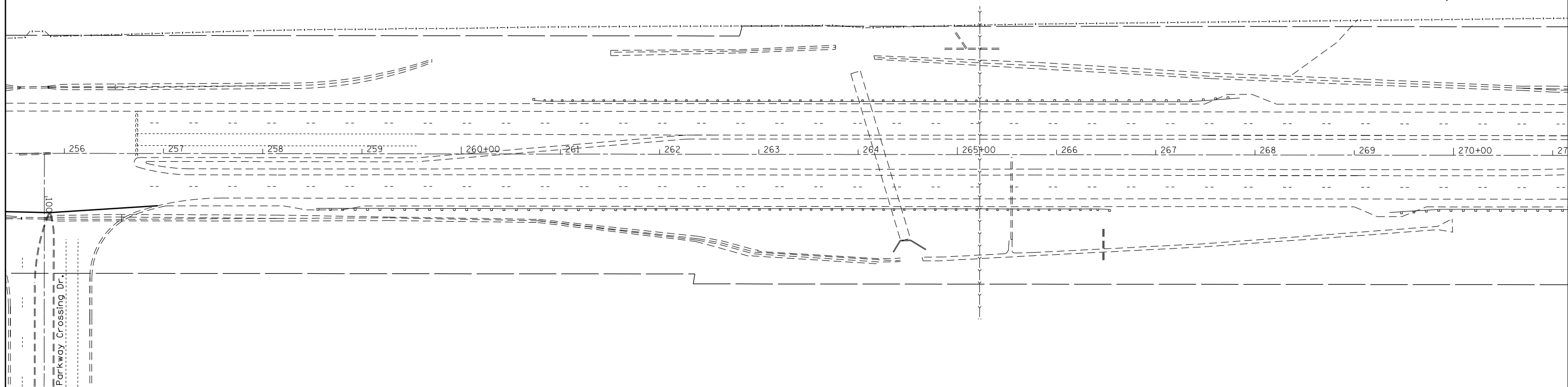
F.A.P. RTE.	SECTION	COUNTY	TOTAL SHEETS	SHEET NO.
323	(13X)-RS-1	Macon	22	10
CONTRACT NO. 74543			ILLINOIS FED. AID PROJECT	



NOTE:
REPLACE ALL PAVEMENT
MARKINGS AROUND ISLANDS
AND ALL STOP BARS.



FILE NAME =	USER NAME = steffenmk	DESIGNED -	REVISED -	STATE OF ILLINOIS DEPARTMENT OF TRANSPORTATION	PLAN SHEET				F.A.P. RTE.	SECTION	COUNTY	TOTAL SHEETS	SHEET NO.
pw:\IL\084EBIDINTEG.illinois.gov\PWIDOT\Documents\IDOT Offices\District 7\Projects\7453\Drawings\CAD\Sheets\0774543-sht-plan.dgn		DRAWN -	REVISED -		323	(13X)-RS-1	Macon	22	11				
Default	PLOT SCALE = 100.0000' / in.	CHECKED -	REVISED -		CONTRACT NO. 74543				ILLINOIS FED. AID PROJECT				
	PLOT DATE = 1/29/2016	DATE -	REVISED -		SCALE:	SHEET	OF	SHEETS	STA.	TO STA.			



FILE NAME =	USER NAME = steffenmk	DESIGNED -	REVISED -
pw:\IL\084EBIDINTEG.illinois.gov\PWIDOT\Documents\DOT Offices\District 7\Projects\7453\Drawings\CAD\Sheets\0774543-sht-plan.dgn		DRAWN -	REVISED -
Default	PLOT SCALE = 100.0000' / in.	CHECKED -	REVISED -
	PLOT DATE = 1/29/2016	DATE -	REVISED -

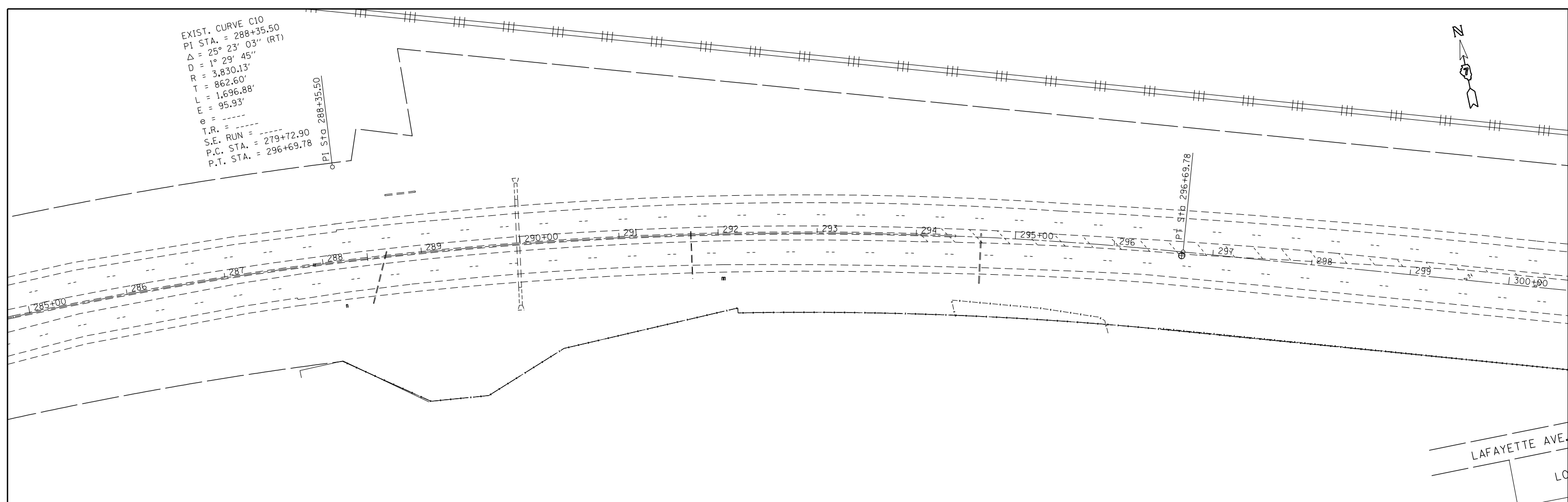
**STATE OF ILLINOIS
DEPARTMENT OF TRANSPORTATION**

PLAN SHEET

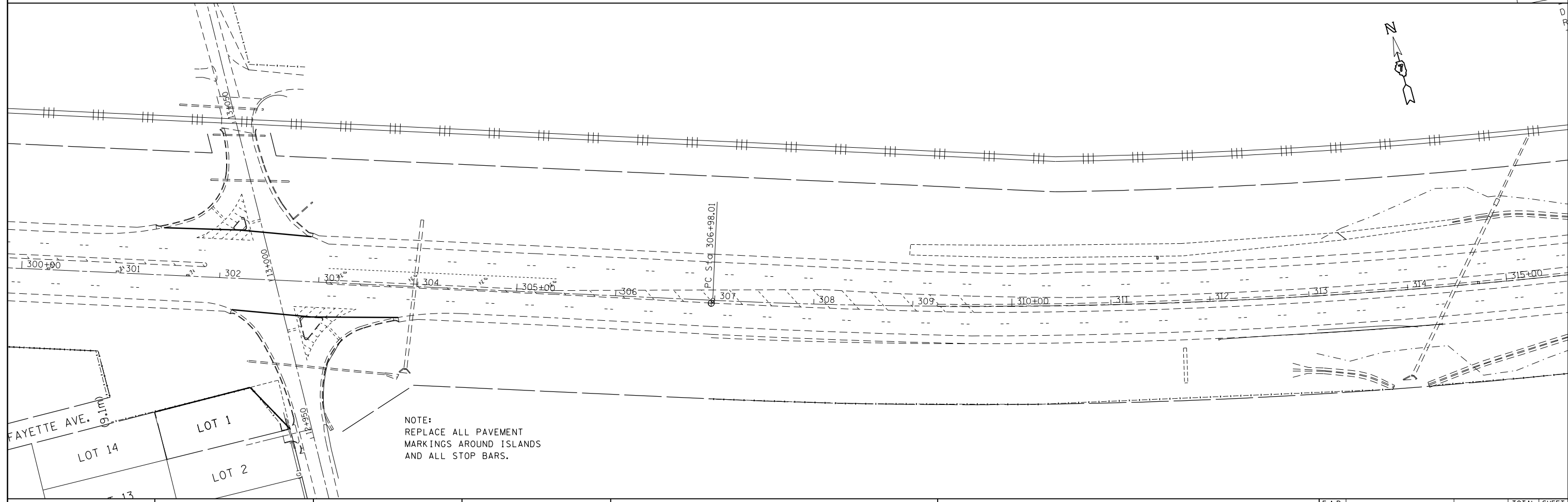
SCALE: SHEET OF SHEETS STA. TO STA.

F.A.P. RTE.	SECTION	COUNTY	TOTAL SHEETS	SHEET NO.
323	(13X)-RS-1	Macon	22	12
CONTRACT NO. 74543				
ILLINOIS FED. AID PROJECT				

EXIST. CURVE C10
 PI STA. = 288+35.50
 $\Delta = 25^\circ 23' 03''$ (RT)
 $D = 1^\circ 29' 45''$
 $R = 3,830.13'$
 $T = 862.60'$
 $L = 1,696.88'$
 $E = 95.93'$
 $e = \dots$
 T.R. = \dots
 S.E. RUN = \dots
 P.C. STA. = 279+72.90
 P.T. STA. = 296+69.78



LAFAYETTE AVE.



NOTE:
 REPLACE ALL PAVEMENT
 MARKINGS AROUND ISLANDS
 AND ALL STOP BARS.

FILE NAME =	USER NAME = steffennk	DESIGNED -	REVISED -
pw:\IL\084EBIDINTEG.illinois.gov\PWIDOT\Documents\DOT Offices\District 7\Projects\7453\Drawings\CAD\Sheets\0774543-sht-plan.dgn		DRAWN -	REVISED -
Default	PLOT SCALE = 100.0000' / in.	CHECKED -	REVISED -
	PLOT DATE = 1/29/2016	DATE -	REVISED -

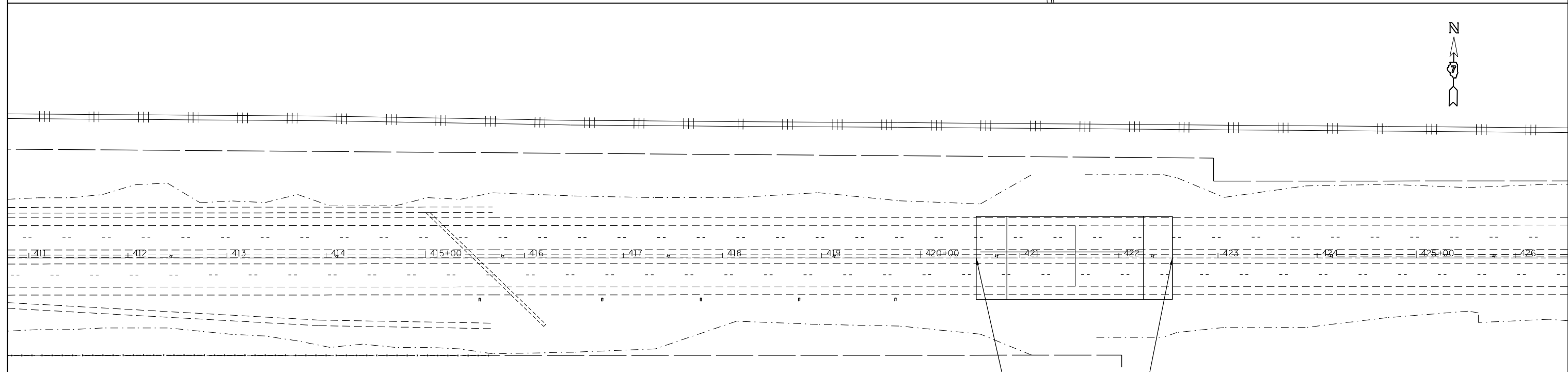
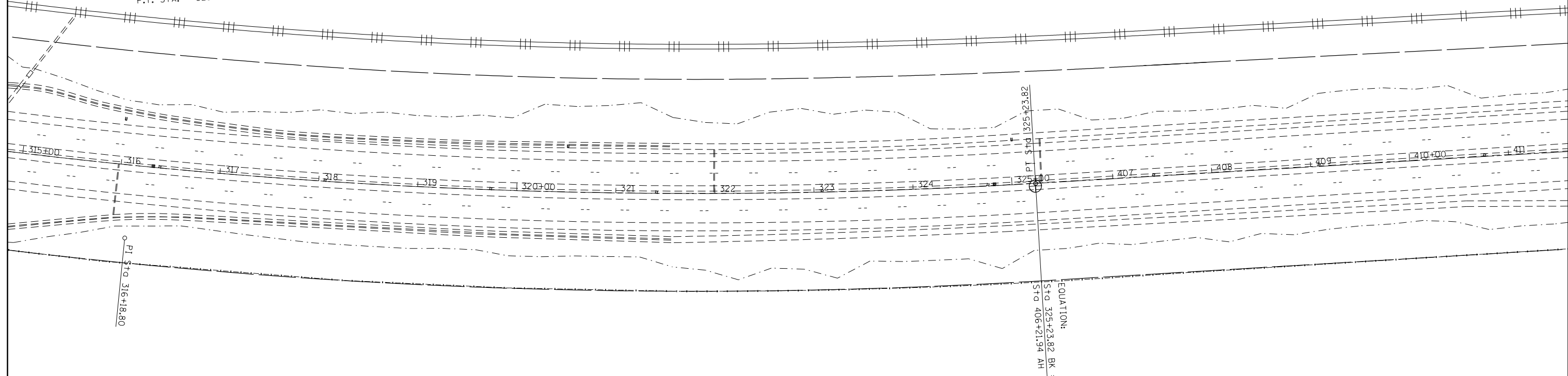
**STATE OF ILLINOIS
 DEPARTMENT OF TRANSPORTATION**

PLAN SHEET

SCALE: SHEET OF SHEETS STA. TO STA.

F.A.P. RTE.	SECTION	COUNTY	TOTAL SHEETS	SHEET NO.
323	(13X)-RS-1	Macon	22	13
CONTRACT NO. 74543				
ILLINOIS FED. AID PROJECT				

$\Delta = 18^\circ 21' 00''$ (LT)
 $D = 1^\circ 00' 18''$
 $R = 5,700.85'$
 $T = 920.79'$
 $L = 1,825.81'$
 $E = 73.88'$
 $e = \text{----}$
 $T.R. = \text{----}$
 $S.E. \text{ RUN} = \text{----}$
 $P.C. \text{ STA.} = 306+98.01$
 $P.T. \text{ STA.} = 325+23.82$



APPROACH SLAB REPAIR (PARTIAL DEPTH)	
LOCATION	S. Y.
EB WEST APPROACH	15
EB EAST APPROACH	5
TOTAL	20

BRIDGE OMISSION
STA 420+56 TO
STA 422+54

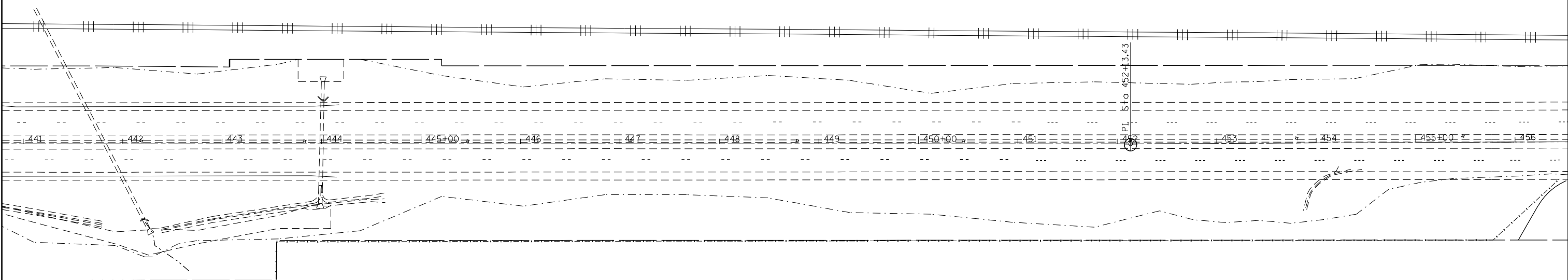
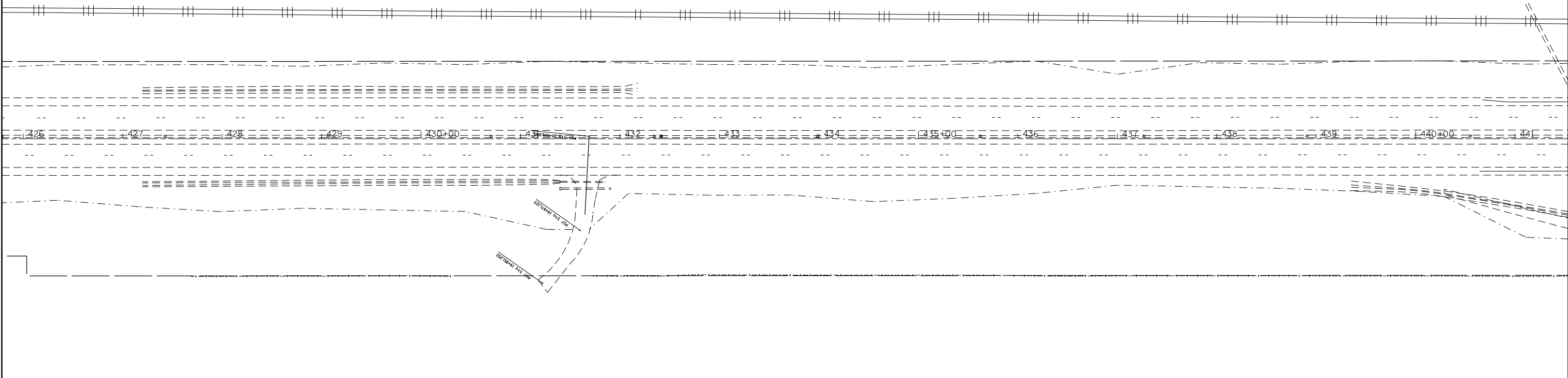
FILE NAME =	USER NAME = steffenmk	DESIGNED -	REVISED -
pw:\IL\084EBIDINTEG.illinois.gov\PIWIDOT\Documents\IDOT Offices\District 7\Projects\7453\DRAWING\CAD\Sheets\0774543-sht-plan.dgn		DRAWN -	REVISED -
Default	PLOT SCALE = 100.0000' / in.	CHECKED -	REVISED -
	PLOT DATE = 1/29/2016	DATE -	REVISED -

STATE OF ILLINOIS
DEPARTMENT OF TRANSPORTATION

PLAN SHEET

SCALE: SHEET OF SHEETS STA. TO STA.

F.A.P. RTE.	SECTION	COUNTY	TOTAL SHEETS	SHEET NO.
323	(13X)-RS-1	Macon	22	14
CONTRACT NO. 74543				
ILLINOIS FED. AID PROJECT				



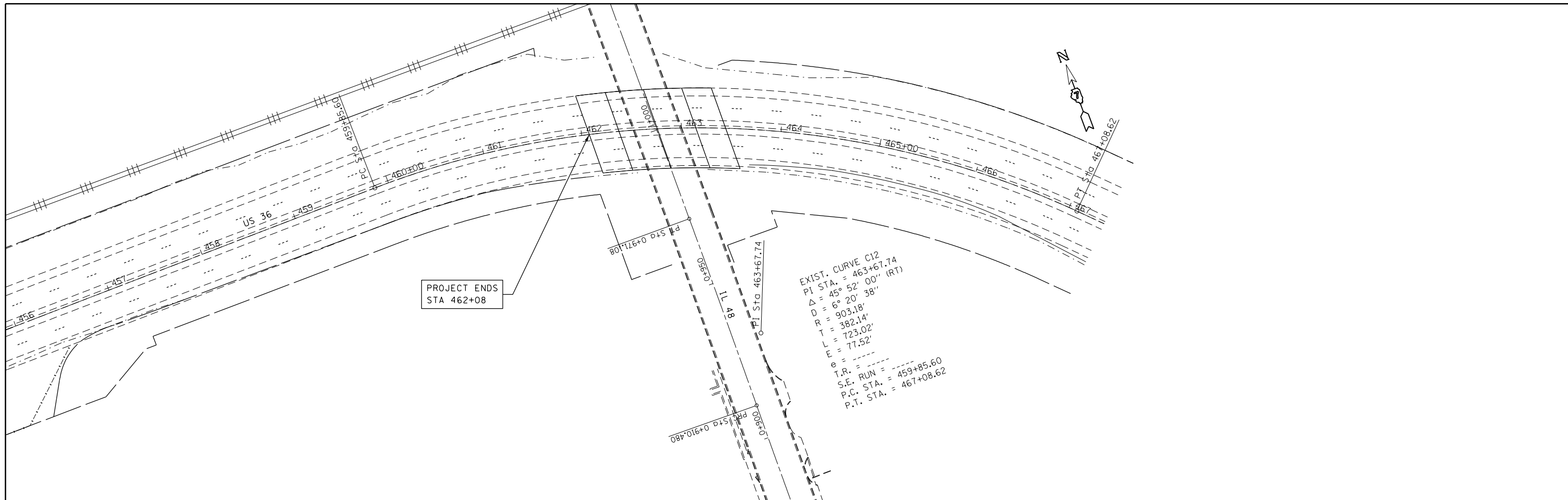
FILE NAME =	USER NAME = steffenmk	DESIGNED -	REVISED -
pw:\IL\084EBIDINTEG.illinois.gov\PI\DOT\Documents\DOT Offices\District 7\Projects\7453\Drawings\CAD\Sheets\D774543-sht-plan.dgn		DRAWN -	REVISED -
Default	PLOT SCALE = 100.0000' / in.	CHECKED -	REVISED -
	PLOT DATE = 1/29/2016	DATE -	REVISED -

**STATE OF ILLINOIS
DEPARTMENT OF TRANSPORTATION**

PLAN SHEET

SCALE: SHEET OF SHEETS STA. TO STA.

F.A.P. RTE.	SECTION	COUNTY	TOTAL SHEETS	SHEET NO.
323	(13X)-RS-1	Macon	22	15
CONTRACT NO. 74543			ILLINOIS FED. AID PROJECT	



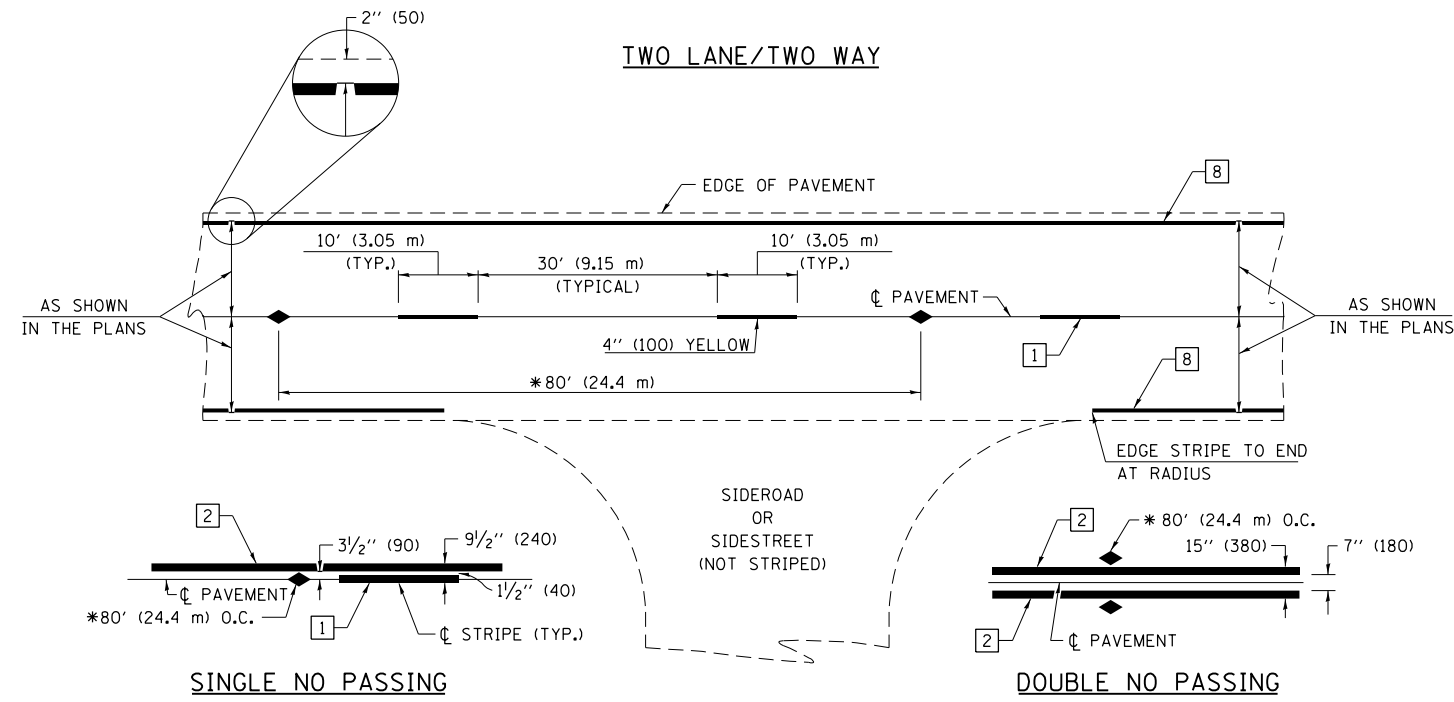
FILE NAME =	USER NAME = steffenmk	DESIGNED -	REVISED -
p:\11\084EBIDINTEG.illinois.gov\PI\DOT\Documents\DOT Offices\District 7\Projects\7453\Drawings\CAD\Sheets\0774543-sht-plan.dgn		DRAWN -	REVISED -
Default	PLOT SCALE = 100.0000' / in.	CHECKED -	REVISED -
	PLOT DATE = 1/29/2016	DATE -	REVISED -

**STATE OF ILLINOIS
DEPARTMENT OF TRANSPORTATION**

PLAN SHEET

SCALE: SHEET OF SHEETS STA. TO STA.

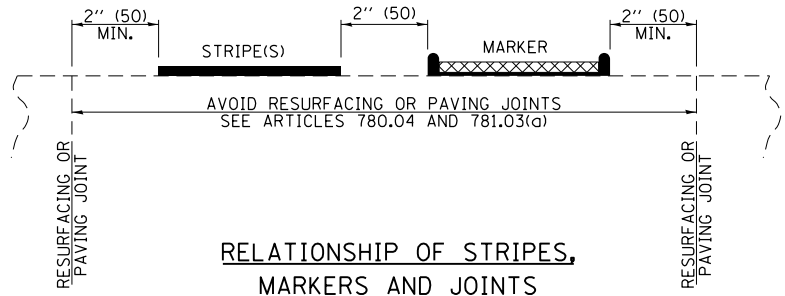
F.A.P. RTE.	SECTION	COUNTY	TOTAL SHEETS	SHEET NO.
323	(13X)-RS-1	Macon	22	16
ILLINOIS FED. AID PROJECT			CONTRACT NO. 74543	



PAVEMENT MARKING LEGEND

- 1 4" (100) SKIP-DASH (YELLOW)
- 2 4" (100) SOLID (YELLOW)
- 3 12" (300) DIAGONAL (YELLOW)
- 4 4" (100) DOUBLE YELLOW (NARROW)
- 5 12" (300) SOLID WHITE
- 6 RESERVED
- 7 6" (150) SKIP-DASH (WHITE)
- 8 4" (100) SOLID (WHITE)
- 9 12" (300) DIAGONAL (WHITE)
- 10 6" (150) SOLID (WHITE)
- 11 24" (600) STOP BAR (WHITE)
- 12 8" (200) SOLID (WHITE)
- 13 4" (100) PARKING WHITE

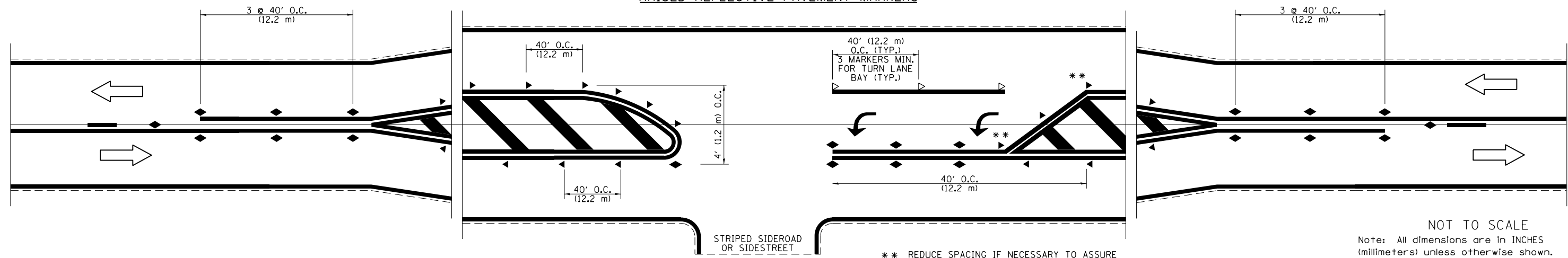
* REDUCE TO 40' (12.2 m) O.C. ON CURVES WITH POSTED OR ADVISORY SPEEDS OF 45 mph (70 km/h) OR LESS.



TYPICAL PAVEMENT MARKERS LEGEND

- ◆ TWO-WAY AMBER MARKER
- ▶ ONE-WAY AMBER MARKER
- ▷ ONE-WAY CRYSTAL MARKER

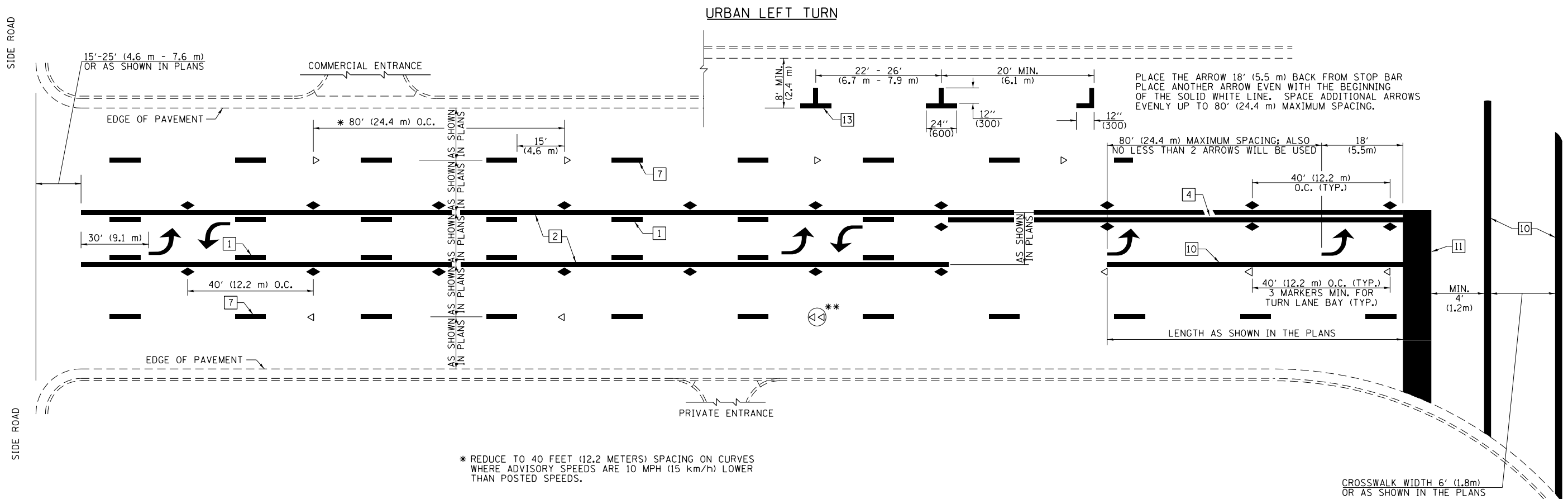
RAISED REFLECTIVE PAVEMENT MARKERS



NOT TO SCALE
Note: All dimensions are in INCHES (millimeters) unless otherwise shown.

FILE NAME =	USER NAME = steffenmk	DESIGNED -	REVISED -	STATE OF ILLINOIS DEPARTMENT OF TRANSPORTATION	PAVEMENT MARKING AND RAISED REFLECTIVE PAVEMENT MARKERS (RURAL & URBAN APPLICATIONS)	F.A.P. RTE.	SECTION	COUNTY	TOTAL SHEETS	SHEET NO.	
pw:\IL\084EBIDINTEG\illinois.gov\PWIDOT\Documents\DOT Offices\District 7\Projects\7453\Drawings\CABsheets\0774543-sht-details	PLotted SCALE = 2.0000' / in.	CHECKED -	REVISED -			323	(13X)-RS-1	Macon	22	17	
	PLOT DATE = 1/29/2016	DATE -	REVISED -			SCALE: SHEET NO. 1 OF 4 SHEETS STA. TO STA.		CONTRACT NO. 74543			
						ILLINOIS FED. AID PROJECT					

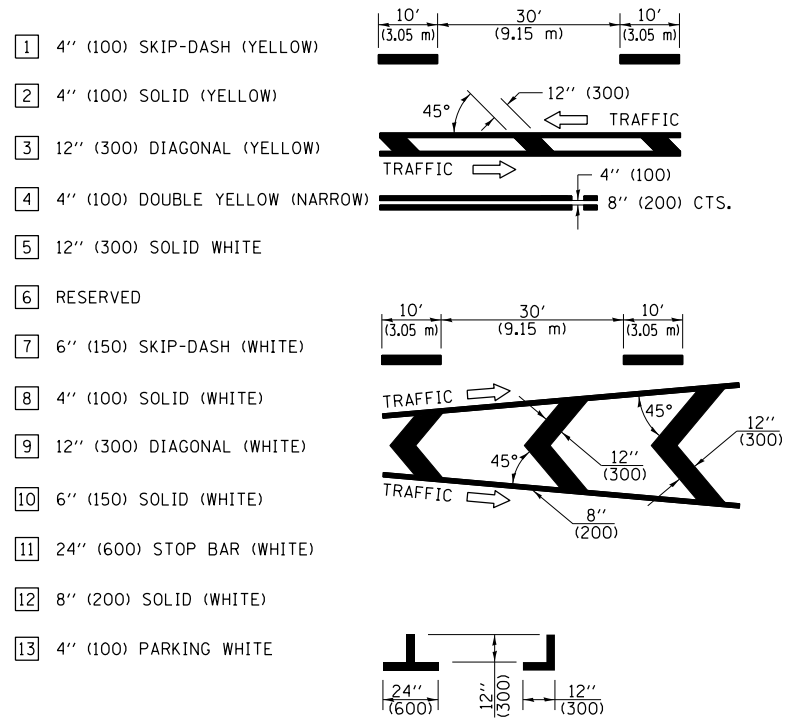
DISTRICT 7 DETAIL NO. 7800001



* REDUCE TO 40 FEET (12.2 METERS) SPACING ON CURVES WHERE ADVISORY SPEEDS ARE 10 MPH (15 km/h) LOWER THAN POSTED SPEEDS.

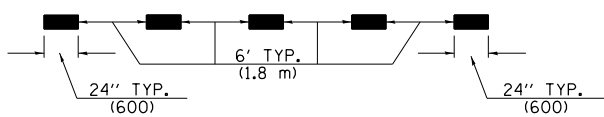
** DOUBLE LANE LINE MARKERS SHALL BE SPECIFIED AND SPACED AS SHOWN IN HIGHWAY STANDARD 781001 FOR MULTI-LANE DIVIDED AND UNDIVIDED HIGHWAYS.

PAVEMENT MARKING LEGEND

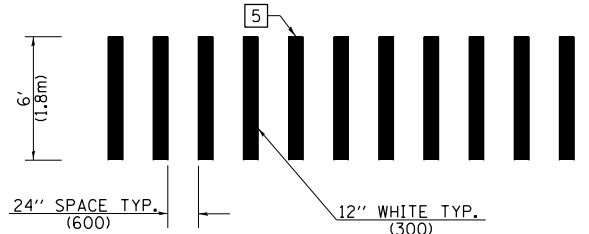


GENERAL NOTES

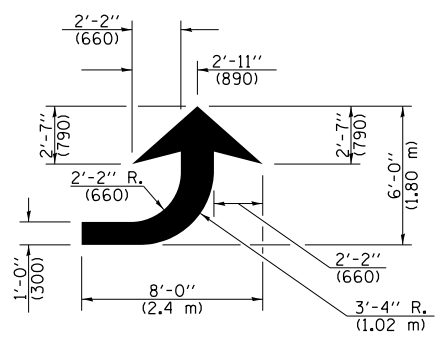
- TURN ARROW PAIRS SHALL BE PLACED AT 250' (75 m) INTERVALS AND SHALL BE EVENLY SPACED BETWEEN BOTH ENDS OF THE BIDIRECTIONAL LEFT TURN LANE. USE A MINIMUM OF TWO PAIRS PER BLOCK.
- THE SOLID YELLOW PAVEMENT MARKINGS [2] SHOULD GENERALLY START OR END NEAR THE RADIUS POINT OF EACH STREET RETURN EXCEPT WHERE ONE OR BOTH ENDS WOULD INCLUDE STOP BARS.
- THE SKIP-DASH PAVEMENT MARKINGS [1] OR [7] SHOULD BE CENTERED BETWEEN BOTH ENDS OF EACH CITY BLOCK AND SHALL BE PLACED SO THEY LINE UP ACROSS FROM EACH OTHER.
- USE LARGE ARROW SIZE FOR BOTH RURAL AND URBAN LOCATIONS. (SEE LAST PAGE OF SECTION 780x FOR SYMBOLS TABLE)
- LANE LINE EXTENSIONS SHALL BE THE SAME COLOR AND WIDTH AS THE LANE LINE BEING EXTENDED.



LANE LINE EXTENSIONS

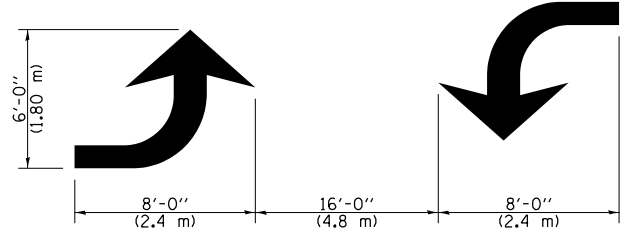


CROSSWALK DETAIL (DECATUR CITY LIMITS ONLY)



LEFT ARROW

REVERSE FOR RIGHT ARROW
AREA = 15.6 SQ. FT. (1.47 m²)
(WHITE)



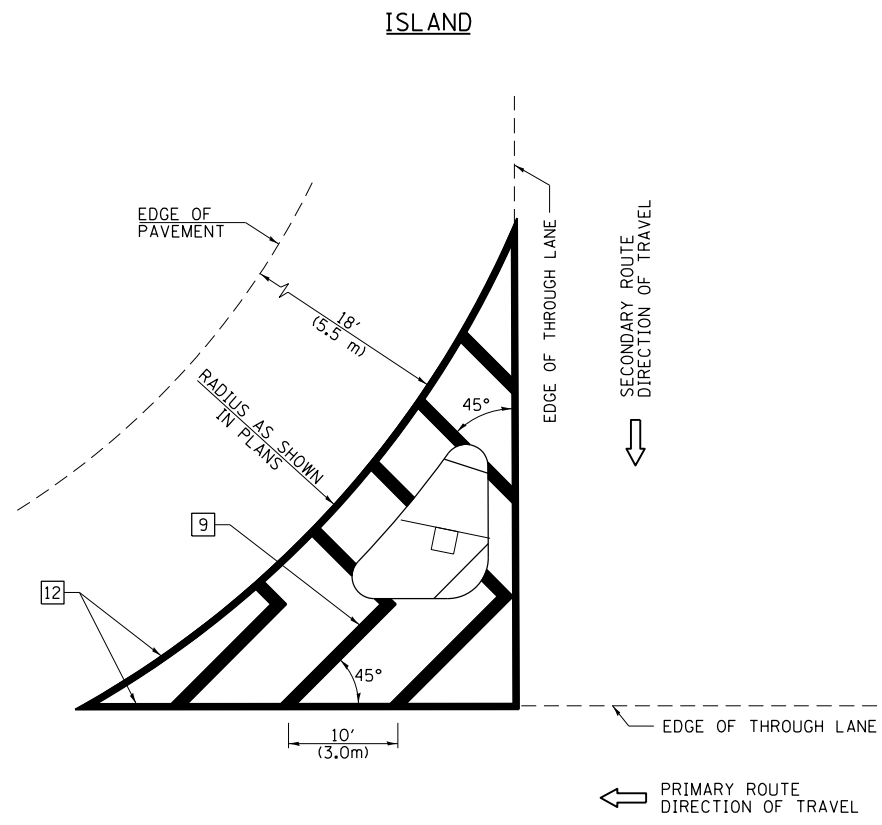
TYPICAL DOUBLE TURN ARROWS (WHITE)

NOT TO SCALE

Note: All dimensions are in INCHES (millimeters) unless otherwise shown.

DISTRICT 7 DETAIL NO. 7800001

FILE NAME =	USER NAME = steffenmk	DESIGNED -	REVISED -	STATE OF ILLINOIS DEPARTMENT OF TRANSPORTATION	PAVEMENT MARKING AND RAISED REFLECTIVE PAVEMENT MARKERS (RURAL & URBAN APPLICATIONS)	F.A.P. RTE.	SECTION	COUNTY	TOTAL SHEETS	SHEET NO.	
pw\11084EBIDINTEG.illinois.gov\PIWIDOT\Documents\DOT Offices\District 7\Projects\7453\Drawings\CABsheets\0774543-sht-details	PLotted SCALE = 2.0000' / in.	CHECKED -	REVISED -			323	(13X)-RS-1	Macon	22	18	
	PLOT DATE = 1/29/2016	DATE -	REVISED -			CONTRACT NO. 74543					
						ILLINOIS FED. AID PROJECT					

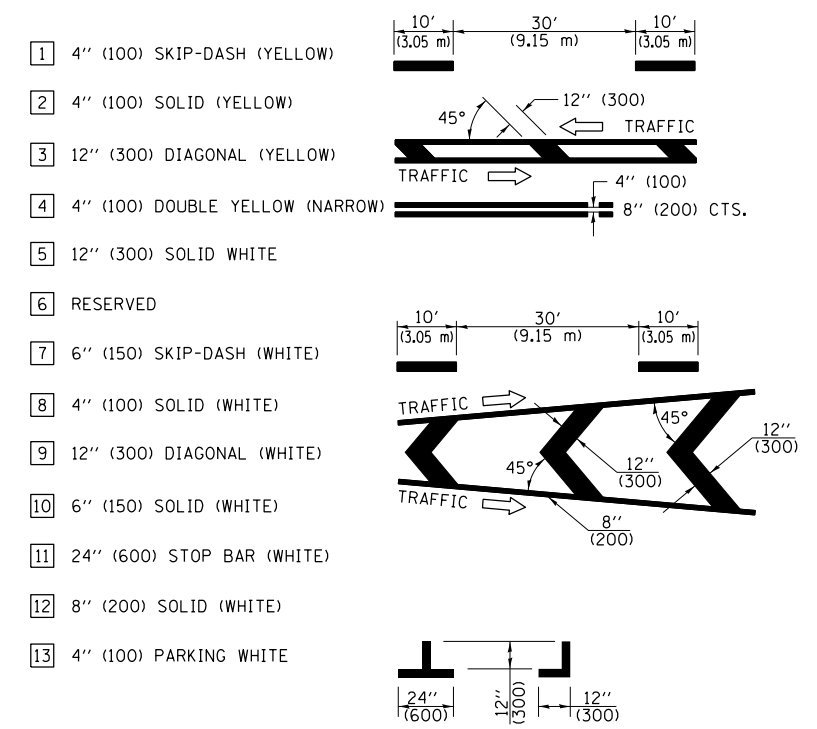


GENERAL NOTES

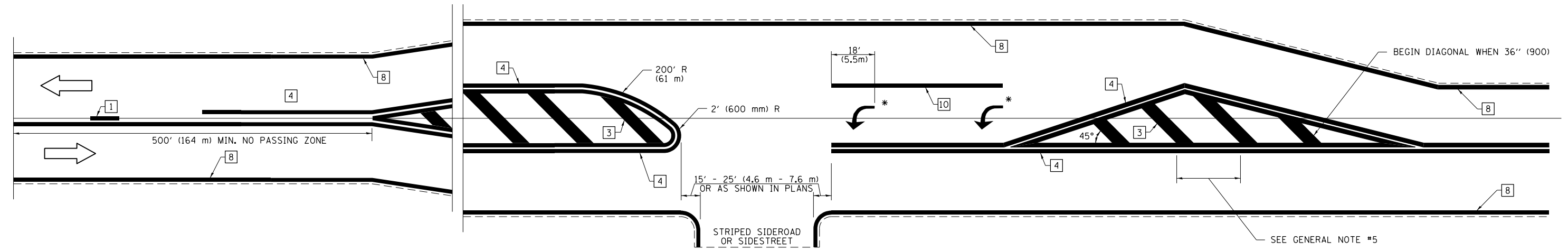
1. RAISED AND CORRUGATED MEDIANS SHALL BE OUTLINED WITH [2] IF PRESENT.
2. SOME OF THE INFORMATION INCLUDED WITH THIS DETAIL MAY NOT BE APPLICABLE TO THIS IMPROVEMENT.
3. PAVEMENT MARKINGS ARE TO BE EXTENDED THROUGH OMISSIONS WHEN APPLICABLE.
4. FINAL PAVEMENT MARKINGS SHALL BE IN PLACE PRIOR TO PLACING ANY RAISED REFLECTIVE PAVEMENT MARKERS.
5. THE FOLLOWING CRITERIA SHALL BE USED FOR SELECTING THE DIAGONAL PAVEMENT MARKING SPACING:

< 30 MPH (< 50 km/h)	15' (4.5 m)
30-45 MPH (50-75 km/h)	20' (6.0 m)
> 45 MPH (> 75 km/h)	30' (9.0 m)

PAVEMENT MARKING LEGEND



RURAL LEFT TURN STRIPING



* PLACE AN ARROW 18' (5.5 m) BACK FROM STOP BAR. PLACE ANOTHER ARROW EVEN WITH THE BEGINNING OF THE SOLID WHITE LINE. SPACE ADDITIONAL ARROWS EVENLY UP TO 80' (24.4 m) MAXIMUM SPACING. USE MINIMUM OF 2 ARROWS.

NOT TO SCALE
 Note: All dimensions are in INCHES (millimeters) unless otherwise shown.

DISTRICT 7 DETAIL NO. 7800001

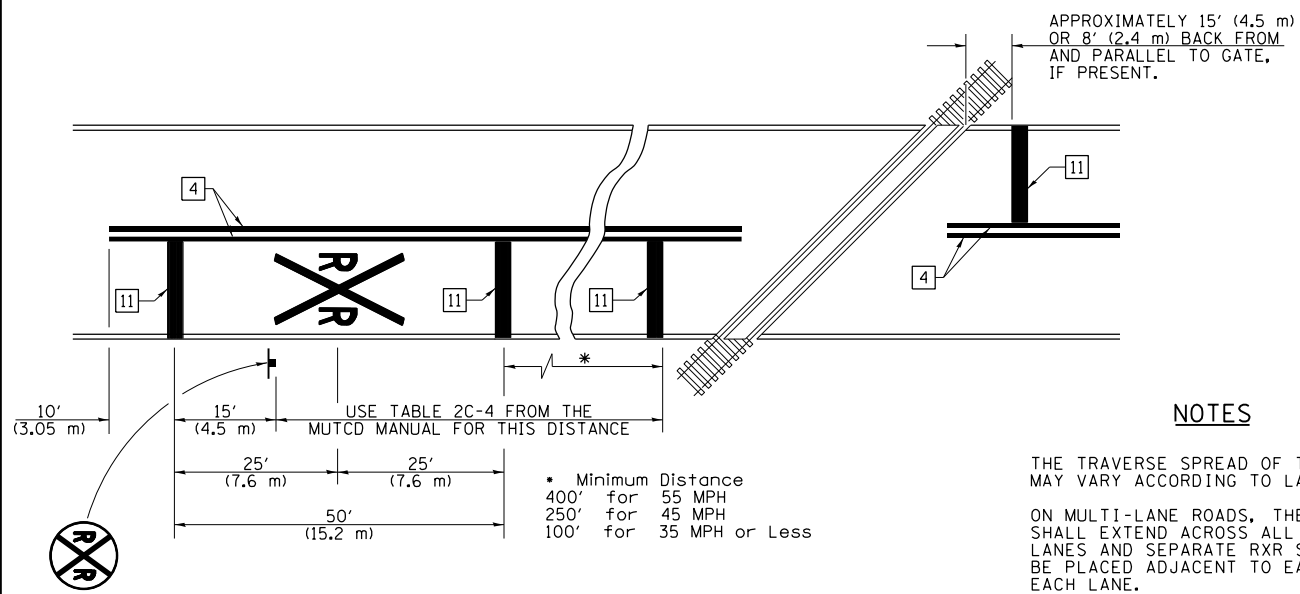
FILE NAME =	USER NAME = steffenmk	DESIGNED -	REVISED -
pw:\11\084EBIDINTEG.illinois.gov\PIWIDOT\Documents\IDOT Offices\District 7\Projects\74533\Drawings\CAB\Sheets\0774543-sht-details		DRAWN -	REVISED -
	PLOT SCALE = 2.0000' / in.	CHECKED -	REVISED -
	PLOT DATE = 1/29/2016	DATE -	REVISED -

**STATE OF ILLINOIS
 DEPARTMENT OF TRANSPORTATION**

**PAVEMENT MARKING AND RAISED REFLECTIVE PAVEMENT MARKERS
 (RURAL & URBAN APPLICATIONS)**
 SCALE: SHEET NO. 3 OF 4 SHEETS STA. TO STA.

F.A.P. RTE.	SECTION	COUNTY	TOTAL SHEETS	SHEET NO.
323	(13X)-RS-1	Macon	22	19
CONTRACT NO. 74543			ILLINOIS FED. AID PROJECT	

PAVEMENT MARKINGS AT RAILROAD-HIGHWAY GRADE CROSSING



NOTES

THE TRAVERSE SPREAD OF THE "X" MAY VARY ACCORDING TO LANE WIDTH.

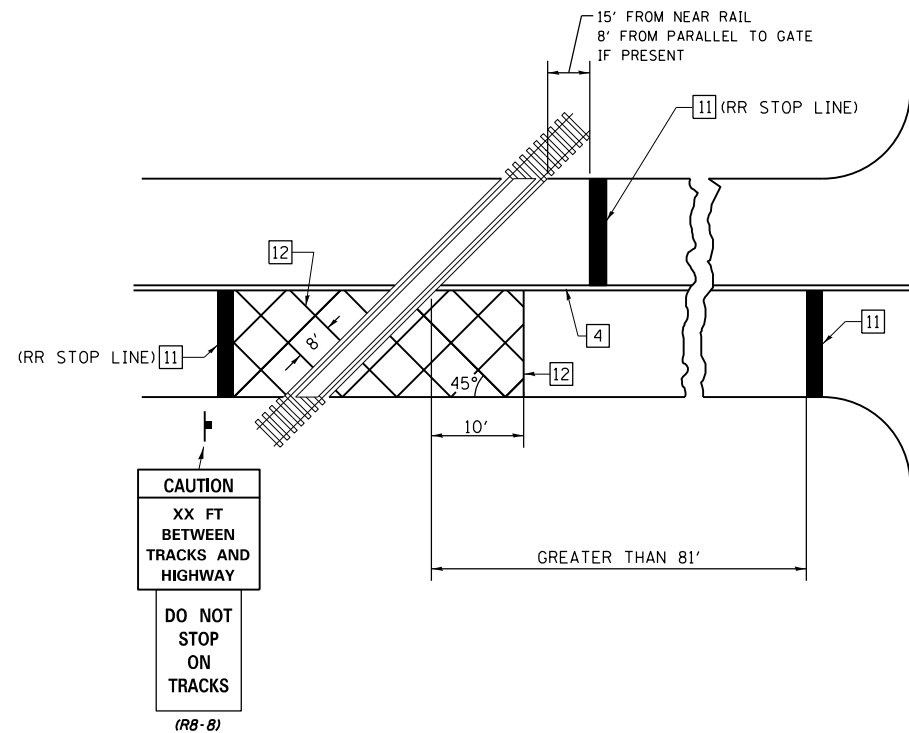
ON MULTI-LANE ROADS, THE STOP LINES SHALL EXTEND ACROSS ALL APPROACH LANES AND SEPARATE RXR SYMBOLS SHALL BE PLACED ADJACENT TO EACH OTHER IN EACH LANE.

WHEN THE PAVEMENT MARKING SYMBOL IS USED, A PORTION OF THE SYMBOL SHOULD BE LOCATED DIRECTLY ADJACENT TO THE ADVANCE WARNING SIGN (W10-1) AS PLACED BY TABLE II-1, CONDITION B OF THE MUTCD.

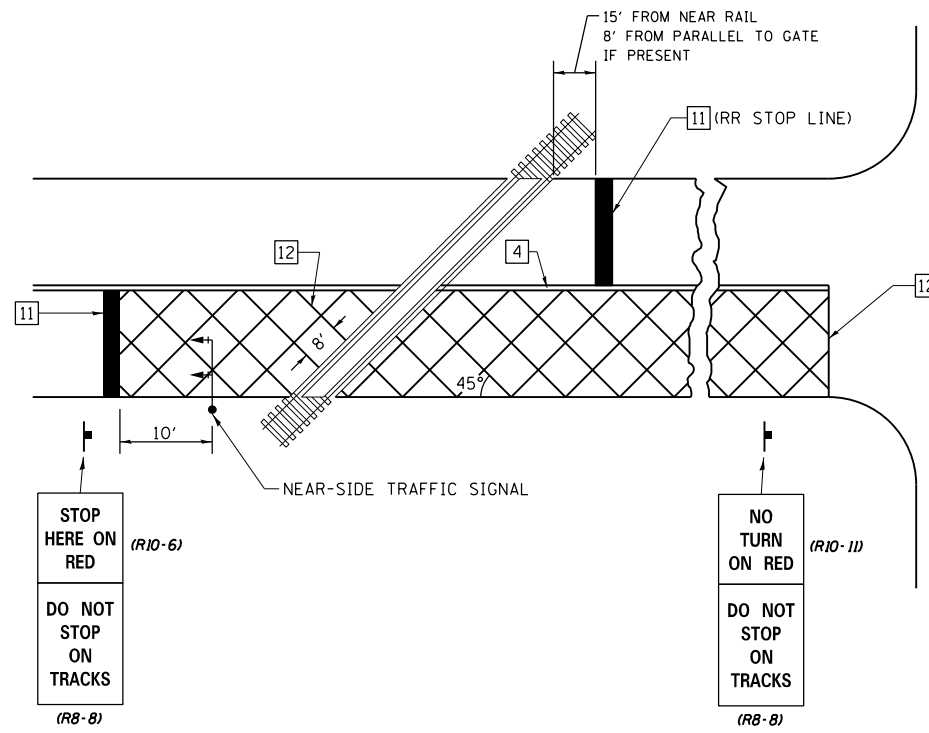
PAVEMENT MARKING LEGEND

- 1 4" (100) SKIP-DASH (YELLOW)
 - 2 4" (100) SOLID (YELLOW)
 - 3 12" (300) DIAGONAL (YELLOW)
 - 4 4" (100) DOUBLE YELLOW (NARROW)
 - 5 12" (300) SOLID WHITE
 - 6 RESERVED
 - 7 6" (150) SKIP-DASH (WHITE)
 - 8 4" (100) SOLID (WHITE)
 - 9 12" (300) DIAGONAL (WHITE)
 - 10 6" (150) SOLID (WHITE)
 - 11 24" (600) STOP BAR (WHITE)
 - 12 8" (200) SOLID (WHITE)
 - 13 4" (100) PARKING WHITE
-

RAILROAD CROSSING WITH INTERCONNECT ONLY



RAILROAD CROSSING WITH INTERCONNECT AND PRE-SIGNALS



GENERAL NOTES

- SUPPLEMENTAL PAVEMENT MARKINGS TO BE INSTALLED ONLY ON APPROACHES TO INTERSECTIONS CONTROLLED BY TRAFFIC SIGNALS WHICH ARE INTERCONNECTED WITH THE RAILROAD WARNING SIGNALS.
- EXTEND PAVEMENT MARKINGS TO THE INTERSECTION ONLY WHERE NEAR-SIDE TRAFFIC SIGNALS ARE USED.

SUPPLEMENTAL PAVEMENT MARKING TREATMENT FOR RAILROAD-HIGHWAY GRADE CROSSING

NOT TO SCALE

Note: All dimensions are in INCHES (millimeters) unless otherwise shown.

DISTRICT 7 DETAIL NO. 7800001

FILE NAME =	USER NAME = steffenmk	DESIGNED -	REVISED -	STATE OF ILLINOIS DEPARTMENT OF TRANSPORTATION	PAVEMENT MARKING AND RAISED REFLECTIVE PAVEMENT MARKERS (RURAL & URBAN APPLICATIONS)	F.A.P. RTE.	SECTION	COUNTY	TOTAL SHEETS	SHEET NO.
pw\11\084EBIDINTEG.illinois.gov\PIWIDOT\Documents\IDOT Offices\District 7\Projects\7453\Drawings\CABsheets\0774543-sht-details		CHECKED -	REVISED -			323	(13X)-RS-1	Macon	22	20
PLOT SCALE = 2.0000' / in.		DATE -	REVISED -			CONTRACT NO. 74543				
PLOT DATE = 1/29/2016						ILLINOIS FED. AID PROJECT				

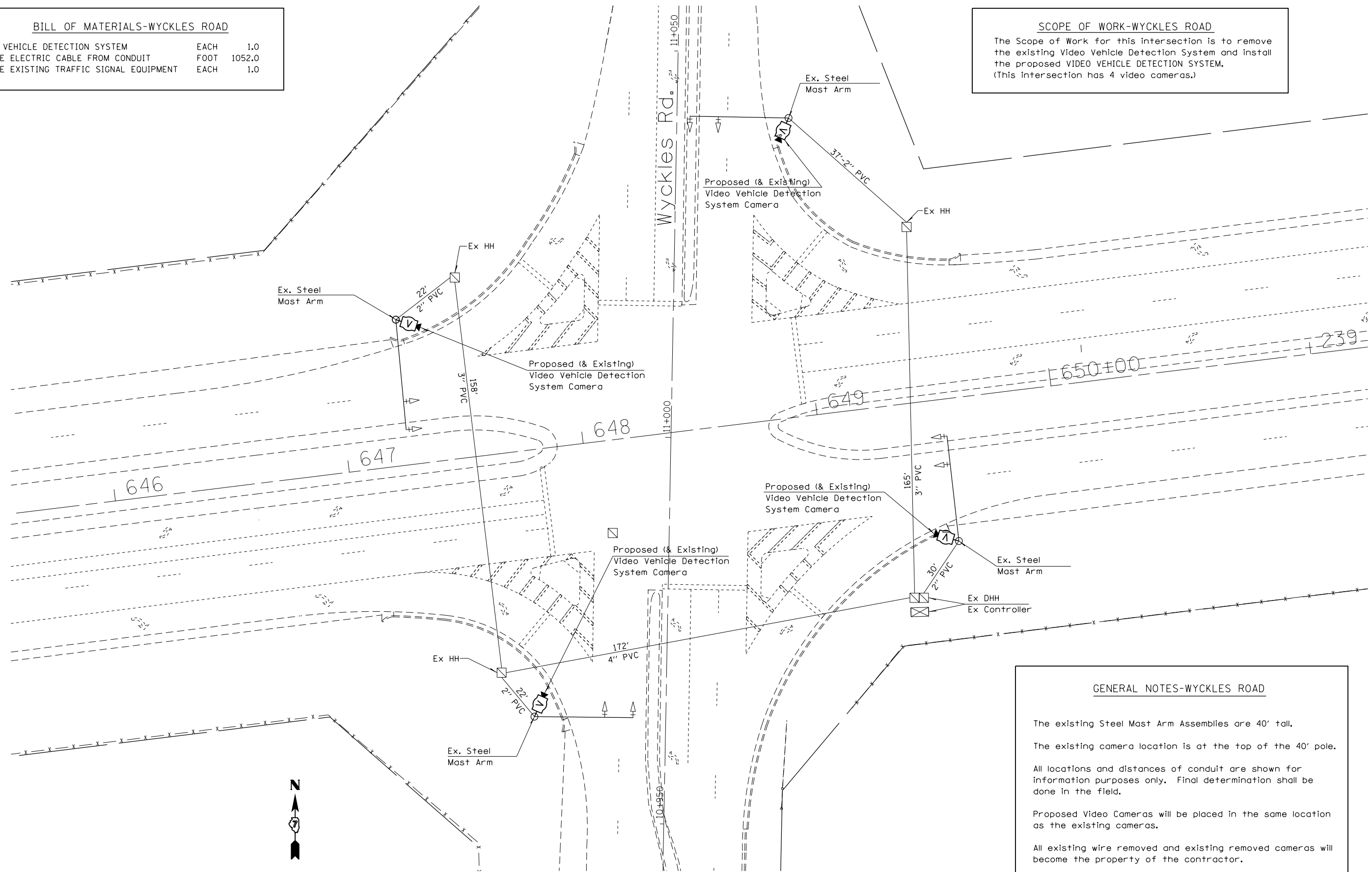
SCALE: SHEET NO. 4 OF 4 SHEETS STA. TO STA.

BILL OF MATERIALS-WYCKLES ROAD

VIDEO VEHICLE DETECTION SYSTEM	EACH	1.0
REMOVE ELECTRIC CABLE FROM CONDUIT	FOOT	1052.0
REMOVE EXISTING TRAFFIC SIGNAL EQUIPMENT	EACH	1.0

SCOPE OF WORK-WYCKLES ROAD

The Scope of Work for this intersection is to remove the existing Video Vehicle Detection System and install the proposed VIDEO VEHICLE DETECTION SYSTEM. (This intersection has 4 video cameras.)



GENERAL NOTES-WYCKLES ROAD

The existing Steel Mast Arm Assemblies are 40' tall.
 The existing camera location is at the top of the 40' pole.
 All locations and distances of conduit are shown for information purposes only. Final determination shall be done in the field.
 Proposed Video Cameras will be placed in the same location as the existing cameras.
 All existing wire removed and existing removed cameras will become the property of the contractor.

FILE NAME =	USER NAME = steffenk	DESIGNED -	REVISED -
p:\11\084EBIDINTEG\illinois.gov\PWIDOT\Documents\DOT Offices\District 7\Projects\7453\Drawings\CAD\Sheets\0774543-sht-TS.dgn		REVISION	REVISED -
Default	PLOT SCALE = 40.0000' / in.	CHECKED -	REVISED -
	PLOT DATE = 1/29/2016	DATE -	REVISED -

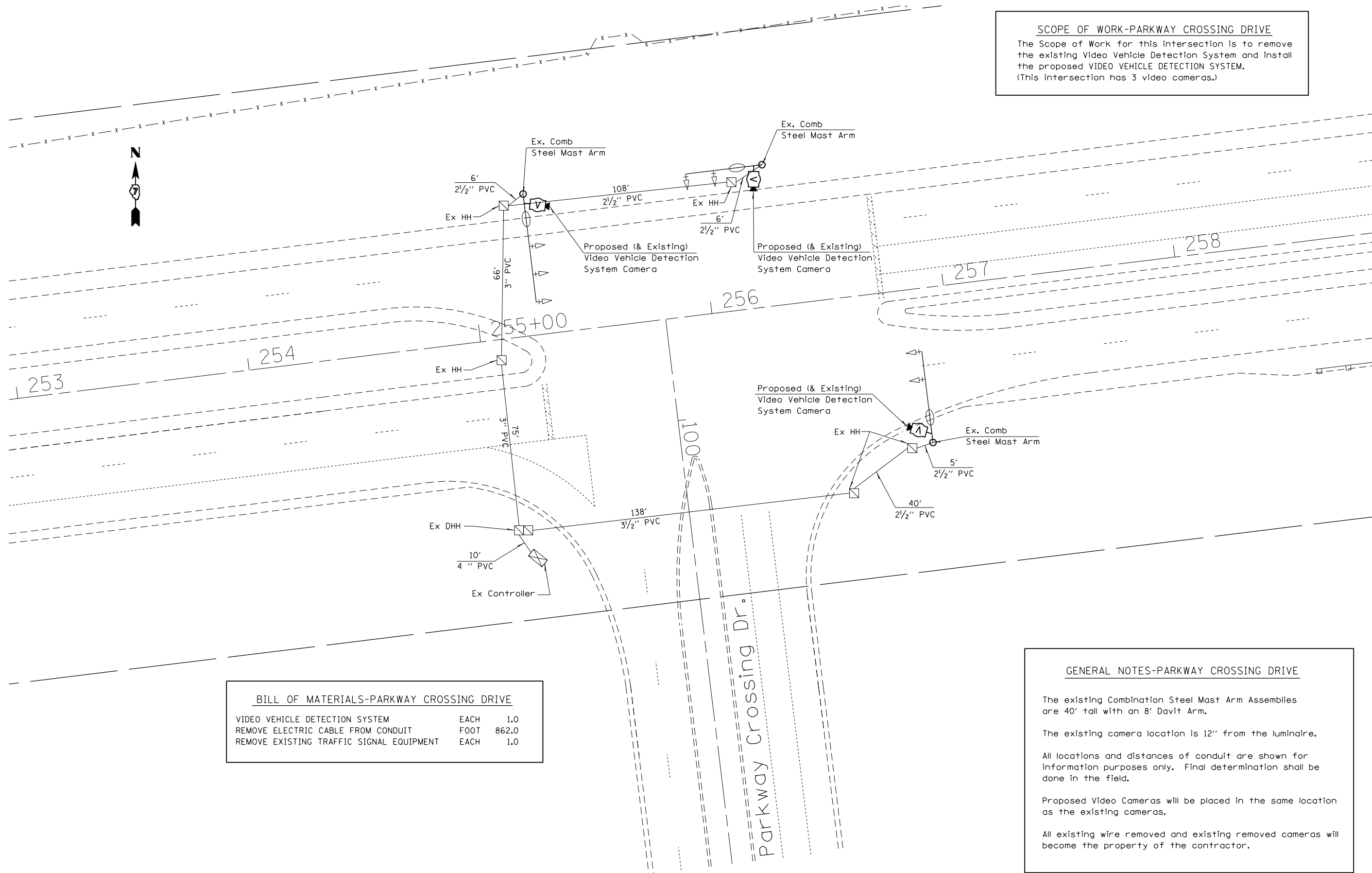
**STATE OF ILLINOIS
DEPARTMENT OF TRANSPORTATION**

**VIDEO VEHICLE DETECTION SYSTEM
WYCKLES ROAD & US RTE 36**

SCALE: SHEET OF SHEETS STA. TO STA.

F.A.P. RTE.	SECTION	COUNTY	TOTAL SHEETS	SHEET NO.
323	(13X)-RS-1	Macon	22	21
CONTRACT NO. 74543			ILLINOIS FED. AID PROJECT	

SCOPE OF WORK-PARKWAY CROSSING DRIVE
 The Scope of Work for this intersection is to remove the existing Video Vehicle Detection System and install the proposed VIDEO VEHICLE DETECTION SYSTEM.
 (This intersection has 3 video cameras.)



BILL OF MATERIALS-PARKWAY CROSSING DRIVE

VIDEO VEHICLE DETECTION SYSTEM	EACH	1.0
REMOVE ELECTRIC CABLE FROM CONDUIT	FOOT	862.0
REMOVE EXISTING TRAFFIC SIGNAL EQUIPMENT	EACH	1.0

GENERAL NOTES-PARKWAY CROSSING DRIVE

The existing Combination Steel Mast Arm Assemblies are 40' tall with an 8' Davit Arm.

The existing camera location is 12" from the luminaire.

All locations and distances of conduit are shown for information purposes only. Final determination shall be done in the field.

Proposed Video Cameras will be placed in the same location as the existing cameras.

All existing wire removed and existing removed cameras will become the property of the contractor.

FILE NAME =	USER NAME = steffenmk	DESIGNED -	REVISED -
pw:\IL\084EBIDINTEG\Illinois.gov\PWIDOT\Documents\DOT Offices\District 7\Projects\7453\Drawings\CAD\Drawings\0774543-sht-TS.dgn		DRAWN -	REVISED -
Default	PLOT SCALE = 40.0000' / in.	CHECKED -	REVISED -
	PLOT DATE = 1/29/2016	DATE -	REVISED -

**STATE OF ILLINOIS
 DEPARTMENT OF TRANSPORTATION**

VIDEO VEHICLE DETECTION SYSTEM PARKWAY CROSSING DRIVE & US RT 36			
SCALE:	SHEET	OF SHEETS	STA. TO STA.

F.A.P. RTE.	SECTION	COUNTY	TOTAL SHEETS	SHEET NO.
323	(13X)-RS-1	Macon	22	22
CONTRACT NO. 74543			ILLINOIS FED. AID PROJECT	