

STATE OF ILLINOIS
DEPARTMENT OF TRANSPORTATION
DIVISION OF HIGHWAYS

**PROPOSED
HIGHWAY PLANS**

FAP ROUTE 592 (IL 157)
SECTION 32-1RS-1

RESURFACING AND PATCHING
ST. CLAIR COUNTY

C-98-046-15

F.A.P. RTE.	SECTION	COUNTY	TOTAL SHEETS	SHEET NO.
592	32-1RS-1	ST. CLAIR	10	1
		ILLINOIS	CONTRACT NO. 76H96	

FOR INDEX OF SHEETS, SEE SHEET NO. 2

HIGHWAY CLASSIFICATION

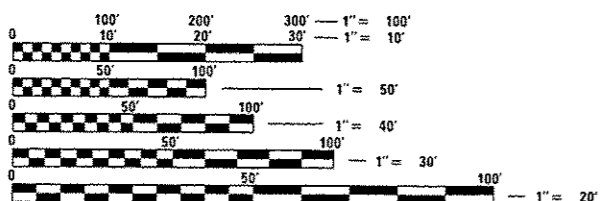
FAP 592 - IL 157
Functional Class: Other Principal Arterial
ADT: 9250 (CURRENT)
9500 (2016)
11600 (2036)
MU: 1.6 % SU: 5.4 %
Posted Speed: 50 mph

STATE ST
Functional Class: Minor Arterial
ADT: 6100 (CURRENT)
6300 (2016)
7700 (2036)

MAIN ST
Functional Class: Minor Arterial
ADT: 10400 (CURRENT)
10700 (2016)
13100 (2036)

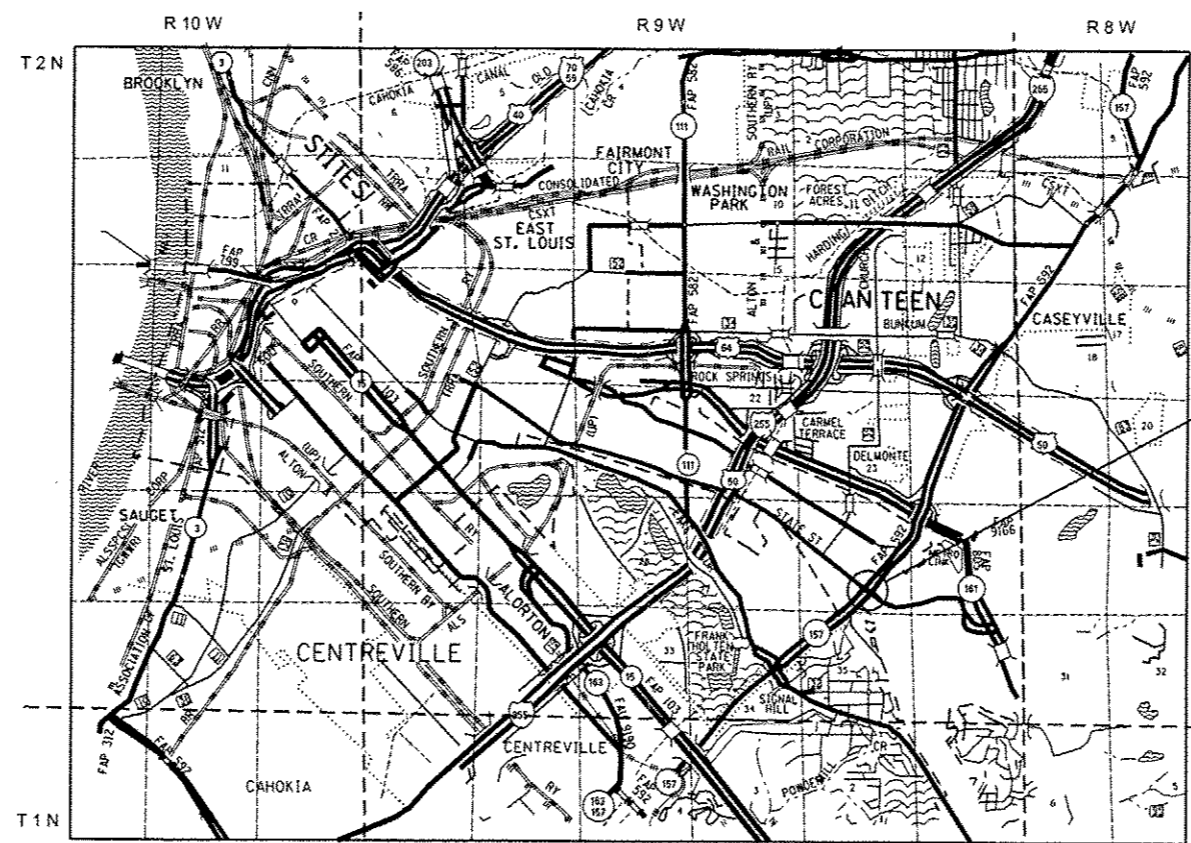


PROJECT LOCATION
IL 157 INTERSECTION AT
WEST MAIN ST AND STATE ST
LATITUDE: 38.58869
LONGITUDE: -90.06058



FULL SIZE PLANS HAVE BEEN PREPARED USING STANDARD ENGINEERING SCALES. REDUCED SIZED PLANS WILL NOT CONFORM TO STANDARD SCALES. IN MAKING MEASUREMENTS ON REDUCED PLANS, THE ABOVE SCALES MAY BE USED.

J.U.L.I.E.
JOINT UTILITY LOCATION INFORMATION FOR EXCAVATION
1-800-892-0123
OR 811



LOCATION MAP
NOT TO SCALE

E ST. LOUIS TOWNSHIP
BELLEVILLE TOWNSHIP

GROSS LENGTH = 345.05 FT. = 0.065 MILE
NET LENGTH = 345.05 FT. = 0.065 MILE

PROJECT ENGINEER: MICHAEL PRITCHETT / TIM PADGETT (618) 346-3325
DESIGNER: ARNOLD DOSSEH-ADJANON (618) 346-3207

CONTRACT NO. 76H96

STATE OF ILLINOIS
DEPARTMENT OF TRANSPORTATION
DIVISION OF HIGHWAYS

SUBMITTED Feb 11 20 16

Jeffrey S. Kasper
DEPUTY DIRECTOR OF HIGHWAYS, REGION 5 ENGINEER

March 13 20 16
Maureen M. Addis, P.E.
ENGINEER OF DESIGN AND ENVIRONMENT

March 13 20 16
Orin Conner, P.E.
DIRECTOR OF HIGHWAYS/CHIEF ENGINEER

**PRINTED BY THE AUTHORITY
OF THE STATE OF ILLINOIS**

INDEX OF SHEETS

- 1 COVER SHEET
- 2 GENERAL NOTES, INDEX OF SHEETS & HIGHWAY STANDARDS
- 3 SUMMARY OF QUANTITIES
- 4 TYPICAL SECTIONS
- 5 SCHEDULE OF QUANTITIES
- 6 PLAN SHEET
- 7 PATCHING PLAN
- 8 DETAIL SHEET
- 9-10 DETECTOR LOOP REPLACEMENT PLAN

GENERAL NOTES

1. ILLINOIS STATE LAW REQUIRES A 48-HOUR NOTICE TO BE GIVEN TO ALL UTILITIES WITHIN THE PROJECT AREA BEFORE DIGGING. FIELD MARKING OF FACILITIES MAY BE OBTAINED BY CONTACTING J.U.L.I.E. OR FOR NON-MEMBERS, THE UTILITY COMPANY DIRECTLY. AGENCIES KNOWN TO HAVE FACILITIES WITHIN THE PROJECT AREA ARE AS FOLLOWS:

•AMEREN ILLINOIS - GAS & ELECTRIC	AERIAL, BURIED
•AT&T ILLINOIS - COMMUNICATIONS	AERIAL, BURIED
•CITY OF EAST ST. LOUIS - LIGHTING	AERIAL, BURIED
•ILLINOIS AMERICAN WATER COMPANY - WATER	BURIED
•METRO - COMMUNICATIONS	AERIAL, BURIED
•WINDSTREAM KDL, INC. - COMMUNICATIONS	AERIAL, BURIED

MEMBERS OF J.U.L.I.E. CALL TOLL FREE (800) 892-0123 OR 811 AND ARE INDICATED BY *. NON-J.U.L.I.E. MEMBERS MUST BE NOTIFIED INDIVIDUALLY.

- 2. THE CONTRACTOR AND THE ENGINEER SHALL BE AWARE THAT NO SURVEY WAS PERFORMED FOR THIS PROJECT. THE STATIONING, TOPOGRAPHY, AND QUANTITIES SHOWN IN THE PLANS WERE CREATED USING MICROFILM AND FIELD MEASUREMENTS. ALL SHALL BE ASSUMED APPROXIMATE. THE CONTRACTOR SHALL VERIFY ALL DIMENSIONS AND CONDITIONS IN THE FIELD PRIOR TO CONSTRUCTION AND ORDERING MATERIALS.
- 3. THE THICKNESS OF THE HMA MIXTURE SHOWN ON THE PLANS IS THE NOMINAL THICKNESS. DEVIATIONS FROM THE NOMINAL THICKNESS WILL BE PERMITTED WHEN SUCH DEVIATIONS OCCUR DUE TO IRREGULARITIES IN THE EXISTING SURFACE OR BASE ON WHICH THE HMA MIXTURE IS PLACED.
- 4. 'ROAD CONSTRUCTION AHEAD' SIGNS SHALL BE PLACED AT EACH END OF THE PROJECT PLUS THE INTERSECTING SIDE ROADS, AND WILL BE CONSIDERED INCLUDED IN THE TRAFFIC CONTROL PAY ITEMS. ALL CONSTRUCTION SIGNS SHALL BE FLUORESCENT ORANGE AND 48" X 48".
- 5. NO OVERNIGHT LANE CLOSURES WILL BE ALLOWED UNLESS PEAK HOUR RESTRICTIONS REQUIRED NIGHT WORK.
- 6. ALL AREAS DISTURBED BY THE CONTRACTOR OUTSIDE THE PROPOSED CONSTRUCTION LIMITS SHALL BE SEEDED AT THE CONTRACTOR'S EXPENSE.

GENERAL NOTES (CONT.)

- 7. ALL EXISTING RIGHT-OF-WAY LINES SHOWN ON THE PLAN SHEETS ARE GRAPHICAL REPRESENTATIONS AND SHALL NOT BE USED AS A MEANS TO ESTABLISH OWNERSHIP.
- 8. ALL PATCHING STATIONS ARE APPROXIMATE AND ARE TO BE LOCATED AS DIRECTED BY THE RESIDENT ENGINEERS.
- 9. THE PROPOSED PAVEMENT MARKING SHALL MATCH THE LOCATIONS OF THE EXISTING PAVEMENT MARKING, AS DIRECTED BY THE ENGINEER.
- 10. THE DEPARTMENT STRONGLY ENCOURAGES THE PRIME CONTRACTOR AND THEIR APPROVED SUB-CONTRACTOR TO HIRE MINORITY, WOMEN AND DISADVANTAGED INDIVIDUALS FROM ITS FEDERALLY FUNDED HIGHWAY CONSTRUCTION CAREERS TRAINING PROGRAM (HCCTP) TO HELP MEET WORKFORCE AND TRAINEE GOALS. THIS PROGRAM IS TRAINING MINORITIES, WOMEN AND DISADVANTAGED INDIVIDUALS IN HIGHWAY CONSTRUCTION RELATED SKILLS, E.G., MATH FOR TRADES, JOB READINESS, TECHNICAL SKILLS COURSEWORK (CARPENTRY, CONCRETE FLATWORK, BLUEPRINT READING, SITE PLANS, SITE WORK, TOOLS USE, ETC) AND OSHA 10 HOUR CERTIFICATION, TO PREPARE THEM FOR A CAREER IN THE HIGHWAY CONSTRUCTION TRADES. GRADUATES ARE WELL-TRAINED AND READY TO BECOME PRODUCTIVE ENTRY-LEVEL CONSTRUCTION WORKERS. CONTACT THE DISTRICT 8 EEO OFFICE AT 618-346-3360 AND/OR THE HCCTP COORDINATOR AT 618-874-6528 TO LEARN MORE ABOUT THE PROGRAM AND FOR ASSISTANCE IN MEETING WORKFORCE AND TRAINEE GOALS.

MIXTURE REQUIREMENTS

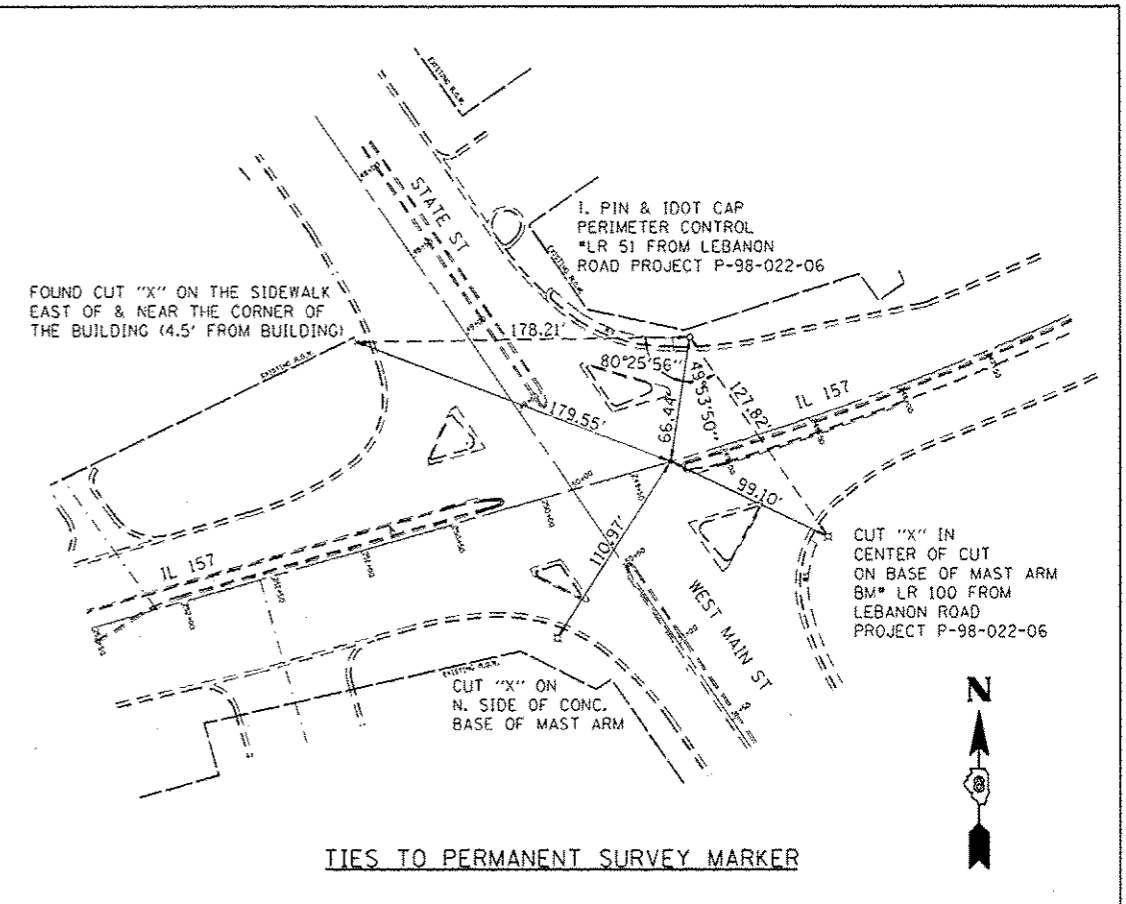
ROUTE	FAP 592
SECTION	32-1RS-1
COUNTY	ST. CLAIR
CONTRACT	76H96

DESCRIPTION:	PATCHING AND RESURFACING ON IL 157 INTERSECTION AT MAIN ST. AND STATE ST IN E. ST. LOUIS
--------------	--

ADT (Construction Yr):	10700
MUZ:	1.6
SUZ:	5.4
20 YR. ESAL'S:	0.00

MIXTURE USE	POLY SURFACE	LEVEL BINDER	INCIDENTAL
AC/PG	SBS PG 76-22	PG 64-22	PG 64-22
RAP % (MAX)	SEE SPECIAL PROVISION	SEE SPECIAL PROVISION	SEE SPECIAL PROVISION
DESIGN AIR VOIDS	4.0% @ Ndes=70	4.0% @ Ndes=70	4.0% @ Ndes=70
MIX COMPOSITION (Gradation)	IL 9.5	IL 9.5 FG	IL 9.5
FRICITION AGG	MIXTURE "D"		MIXTURE "D"
QUALITY MGMT PROGRAM	OC/OA	OC/OA	OC/OA

PLAN QUANTITIES FOR BITUMINOUS CONCRETE SURFACE COURSE ITEMS ARE CALCULATED USING UNIT WEIGHT OF 112 lb/sq yd/ln (59.8 kg/sq m/25 mm THICKNESS).



HIGHWAY STANDARDS

000001-06	STANDARD SYMBOLS, ABBREVIATIONS AND PATTERNS
001006	DECIMAL OF AN INCH AND OF A FOOT
442101-07	CLASS B PATCHES
667101-02	PERMANENT SURVEY MARKERS
701606-10	URBAN SINGLE LANE CLOSURE, MULTILANE, 2W WITH MOUNTABLE MEDIAN
701701-10	URBAN LANE CLOSURE, MULTILANE INTERSECTION
701901-05	TRAFFIC CONTROL DEVICES
780001-05	TYPICAL PAVEMENT MARKINGS
886001-01	DETECTOR LOOP INSTALLATIONS
886006-01	TYPICAL LAYOUTS FOR DETECTION LOOPS

COMMITMENTS

NONE

CODE NO.	ITEM	UNIT	100% STATE		CONSTR. CODE
			TOTAL QUANTITY	ROADWAY 0005 URBAN	
40600290	BITUMINOUS MATERIALS (TACK COAT)	POUND	2454	2454	
40600637	LEVELING BINDER (MACHINE METHOD), IL-9.5FG, N70	TON	104	104	
40600982	HOT-MIX ASPHALT SURFACE REMOVAL - BUTT JOINT	SQ YD	297	297	
40600985	PORTLAND CEMENT CONCRETE SURFACE REMOVAL - BUTT JOINT	SQ YD	578	578	
40603540	POLYMERIZED HOT-MIX ASPHALT SURFACE COURSE, MIX "D", N70	TON	344	344	
44200970	CLASS B PATCHES, TYPE II, 10 INCH	SQ YD	145	145	
44200974	CLASS B PATCHES, TYPE III, 10 INCH	SQ YD	253	253	
44200976	CLASS B PATCHES, TYPE IV, 10 INCH	SQ YD	222	222	
44201299	DOWEL BARS 1 1/2	EACH	790	790	
44213100	PAVEMENT FABRIC	SQ YD	475	475	
44213200	SAW CUTS	FOOT	2327	2327	
44213204	TIE BARS 3/4	EACH	22	22	
60255500	MANHOLES TO BE ADJUSTED	EACH	1	1	
60300105	FRAMES AND GRATES TO BE ADJUSTED	EACH	2	2	

CODE NO.	ITEM	UNIT	100% STATE		CONSTR. CODE
			TOTAL QUANTITY	ROADWAY 0005 URBAN	
66700205	PERMANENT SURVEY MARKERS, TYPE 1	EACH	1	1	
67100100	MOBILIZATION	L SUM	1	1	
70102625	TRAFFIC CONTROL AND PROTECTION, STANDARD 701606	L SUM	1	1	
70102635	TRAFFIC CONTROL AND PROTECTION, STANDARD 701701	L SUM	1	1	
* 78000200	THERMOPLASTIC PAVEMENT MARKING - LINE 4"	FOOT	1571	1571	
* 78000400	THERMOPLASTIC PAVEMENT MARKING - LINE 6"	FOOT	410	410	
* 78000600	THERMOPLASTIC PAVEMENT MARKING - LINE 12"	FOOT	168	168	
* 78000650	THERMOPLASTIC PAVEMENT MARKING - LINE 24"	FOOT	211	211	
* 78000100	THERMOPLASTIC PAVEMENT MARKING - LETTERS AND SYMBOLS	SQ FT	93.6	93.6	
* 78100100	RAISED REFLECTIVE PAVEMENT MARKER	EACH	24	24	
78300200	RAISED REFLECTIVE PAVEMENT MARKER REMOVAL	EACH	24	24	
* 80300100	LOCATING UNDERGROUND CABLE	FOOT	140	140	
* 88600600	DETECTOR LOOP REPLACEMENT	FOOT	3088	3088	
Z0070100	SURVEY MONUMENT COVER ASSEMBLY	EACH	1	1	

* SPECIALTY ITEM

FILE NAME *	USER NAME * fmsmthpd	DESIGNED -	REVISED -	STATE OF ILLINOIS DEPARTMENT OF TRANSPORTATION	SUMMARY OF QUANTITIES		F.A.P. RTE.	SECTION	COUNTY	TOTAL SHEETS	SHEET NO.
p:\11\084E810NTEG\all\indis.gov\FWIDDT\Doc	ments\100T Offices\District 8\FProjects\087	BY Data\FAD\0876H96-shr-plan	REVISED -				592	32-1RS-1	ST CLAIR	10	3
	PLOT SCALE = 1/8" = 1' IN.	CHECKED -	REVISED -				CONTRACT NO. 76H96				
	PLOT DATE = 2/3/2016	DATE -	REVISED -				FED. ROAD DIST. NO. [ILLINOIS] FED. AID PROJECT				

