

STATE OF ILLINOIS
DEPARTMENT OF TRANSPORTATION
DIVISION OF HIGHWAYS

F.A. RTE.	SECTION	COUNTY	TOTAL SHEETS	SHEET NO.
	14-00038-00-SW	PEORIA	19	1
ILLINOIS			CONTRACT NO. 89684	

INDEX OF SHEETS

- 1 COVER SHEET, INDEX OF SHEETS AND HIGHWAY STANDARDS
- 2 GENERAL NOTES, TYPICAL SECTION AND STATUS OF UTILITIES
- 3-4 SUMMARY OF QUANTITIES
- 5-6 SCHEDULE OF QUANTITIES
- 7 LINE DIAGRAM, COORDINATES AND BENCHMARKS
- 8-13 REMOVAL PLAN SHEETS
- 14-19 PROPOSED PLAN SHEETS

HIGHWAY STANDARDS

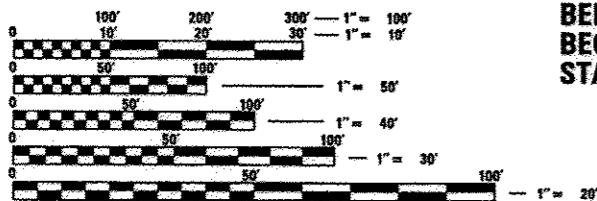
- 000001-06
- 424001-03
- 424006-02
- 424011-02
- 424021-03
- 606001-06
- 701001-02
- 701006-06
- 701011-04
- 701501-06
- 701801-06
- 701901-05

PROPOSED SAFE ROUTES TO SCHOOL

SECTION 14-00038-00-SW
PROJECT SRTS-4009 (315)
CITY OF CHILlicothe
PEORIA COUNTY
JOB NO. C-94-042-15

PROJECT DESCRIPTION:

THE PROJECT INCLUDES PCC SIDEWALK, PCC DRIVEWAY, INCIDENTAL HMA SURFACING, TOPSOIL, SEEDING, SIDEWALK REMOVAL, DRIVEWAY REMOVAL, TREE REMOVAL AND ALL COLLATERAL WORK.



FULL SIZE PLANS HAVE BEEN PREPARED USING STANDARD ENGINEERING SCALES. REDUCED SIZED PLANS WILL NOT CONFORM TO STANDARD SCALES. IN MAKING MEASUREMENTS ON REDUCED PLANS, THE ABOVE SCALES MAY BE USED.

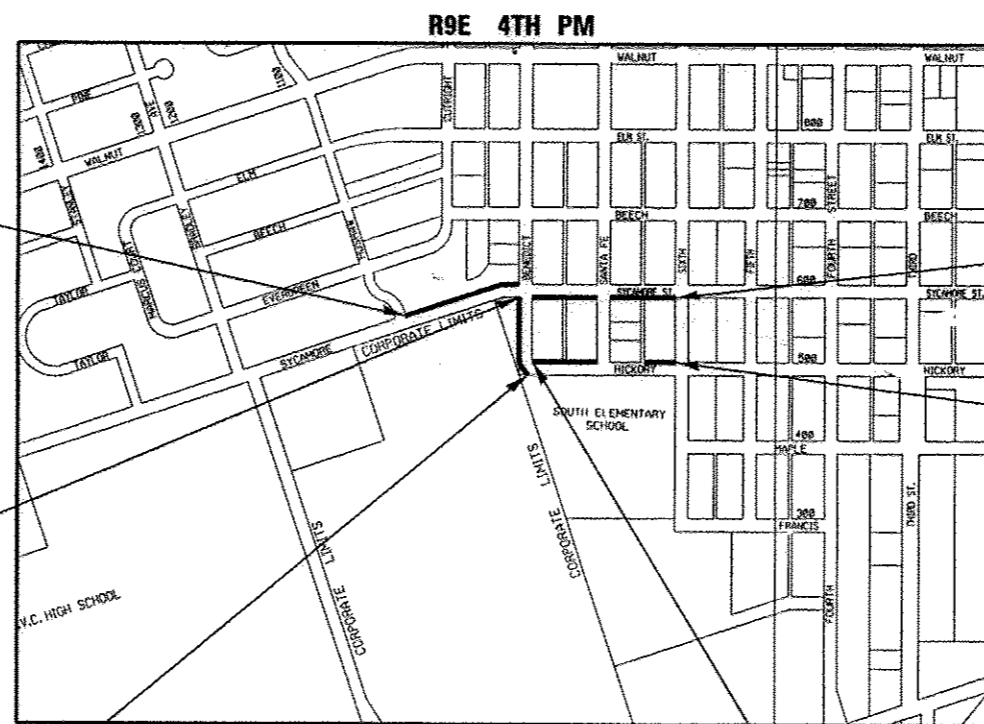
J.U.L.I.E.
JOINT UTILITY LOCATION INFORMATION FOR EXCAVATION
1-800-892-0123
OR 811

CATALOG NO. 035231
CONTRACT NO. 89684

SYCAMORE ST.
BEGIN CONSTRUCTION
STA. 100 + 00

BENEDICT ST.
BEGIN CONSTRUCTION
STA. 300 + 00

BENEDICT ST.
END CONSTRUCTION
STA. 304 + 50

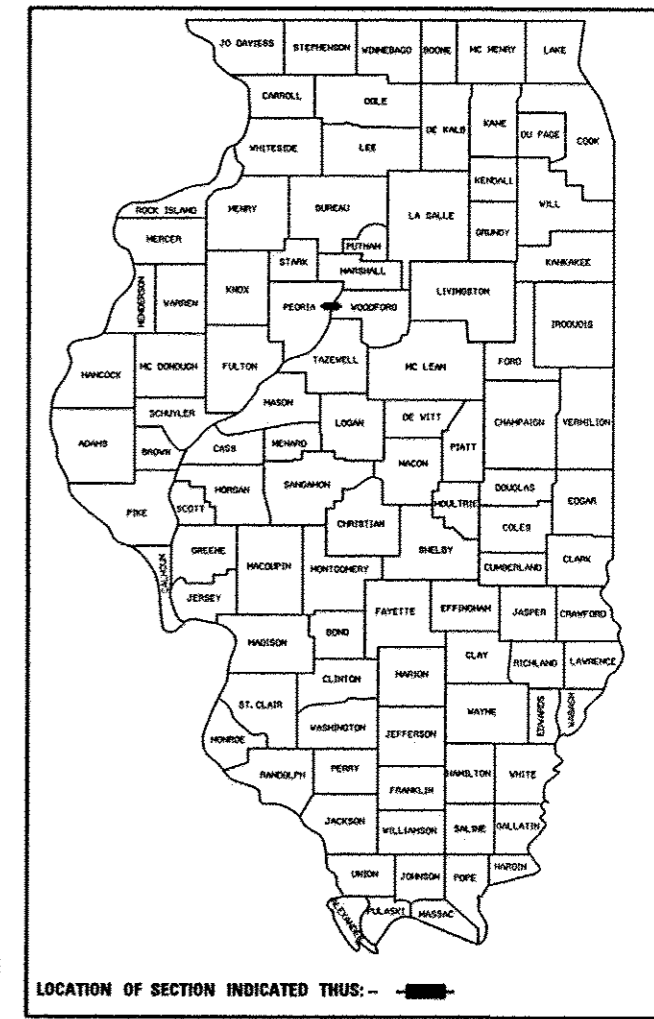


LOCATION MAP
SCALE: N.T.S.

SYCAMORE ST.
END CONSTRUCTION
STA. 115 + 00

HICKORY ST.
END CONSTRUCTION
STA. 208 + 00

HICKORY ST.
BEGIN CONSTRUCTION
STA. 200 + 00

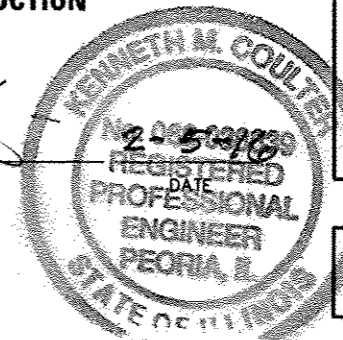


APPROVED *[Signature]* 2-5-2016
LOCAL AGENCY OFFICIAL
CITY OF CHILlicothe

PASSED February 18th 2016
[Signature]
DISTRICT ENGINEER OF LOCAL
ROADS AND STREETS

RELEASING FOR
BID BASED ON
LIMITED REVIEW February 18 2016
[Signature]
DEPUTY DIRECTOR OF HIGHWAYS,
REGION FOUR ENGINEER
STATE OF ILLINOIS
DEPARTMENT OF TRANSPORTATION

[Signature]
KENNETH M. COULTER
ILLINOIS REGISTERED PROFESSIONAL ENGINEER
No. 082-038839
EXPIRATION DATE 11/30/17
DATED: 2-5-16



PRINTED BY THE AUTHORITY
OF THE STATE OF ILLINOIS

GROSS LENGTH = 2,750 FT. = 0.521 MILE
NET LENGTH = 2,750 FT. = 0.521 MILE

GENERAL NOTES

1. The locations of existing water mains, gas mains, sewers, electric power lines, telephone lines and other utilities as shown on the plans are based on careful field investigation and the best information available, but they are not guaranteed. Unless elevations are shown --- all utility locations shown on the plans are based on the approximate depth supplied by the utility company. It shall be the Contractor's responsibility to ascertain their exact location from the utility companies and by field inspection.
2. All work shall be in accordance with the "Standard Specifications For Road And Bridge Construction" adopted April 1, 2016, and the latest edition of the "Illinois Manual On Uniform Traffic Control Devices For Streets And Highways" in effect on the date of invitation for bids.
3. Access must be maintained to all existing properties during construction per Article 107.09 unless arrangements are made in writing by the Contractor with the property owners with a copy to the Engineer for short-term closures.
4. Erosion control practices shall be followed at all times in accordance with the latest "Standards And Specifications For Soil Erosion And Sediment Control".
5. The material used for construction of permanent aggregate driveways shall be crushed limestone (White Rock). No additional compensation shall be provided for this requirement but shall be considered as included in the cost of the pay item for the aggregate as specified on the plans.
6. The Contractor shall provide traffic control in conformance with the "Manual On Uniform Traffic Control Devices For Streets And Highways", State of Illinois, and Section 107.14 of the Highway Standards. Barricades and other required traffic control shall be considered incidental to the contract.
7. The Contractor shall relocate any stop signs or regulatory signs as needed. Temporary regulatory signs shall be erected at any time permanent signs are not in place. The cost of coordinating the relocations and temporary signs shall be considered as included in the cost of PCC Sidewalk 4".
8. All elevations shown on the plans are established from U.S.G.S. mean sea level datum.
9. Trees and shrubs not labeled on the plans for removal shall be saved unless the Engineer or his assigned determines that construction operations prohibit saving. Shrub and bush removal shall be considered incidental to the contract.
10. Water valves shall be adjusted to grade as needed by the City of Chillicothe Public Works Department. The contractor shall coordinate the adjustments as required. The cost of coordinating the adjustments shall be considered as included in the cost of PCC Sidewalk 4".
11. ENVIRONMENTAL REVIEWS:
 Prior to the use of any proposed borrow areas, use areas (temporary access roads, detours, run-arounds, etc.) and/or waste areas, the Contractor shall file the required environmental resource request surveys according to Section 107.22 of the Standard Specifications. These surveys are required in order for the Department to conduct cultural and biological resource surveys for the proposed site.

 The required environmental resource documentation shall include the following:
 - BDE Form 2289 (Cultural and Natural Resources Review of Borrow Areas)
 - BDE Form 2290 (Waste/Use Area Review)
 - A location map showing the size limits and location of the use area
 - Color photographs depicting the use area
 - Borrow Area Entry Agreement form - D4 PI0101

 Prior to any waste materials being removed from the construction site the required environmental resource surveys shall be obtained and filed by the Contractor. Excess waste products removed from the construction site shall be disposed of as required in Section 202.03 of the Standard Specifications.

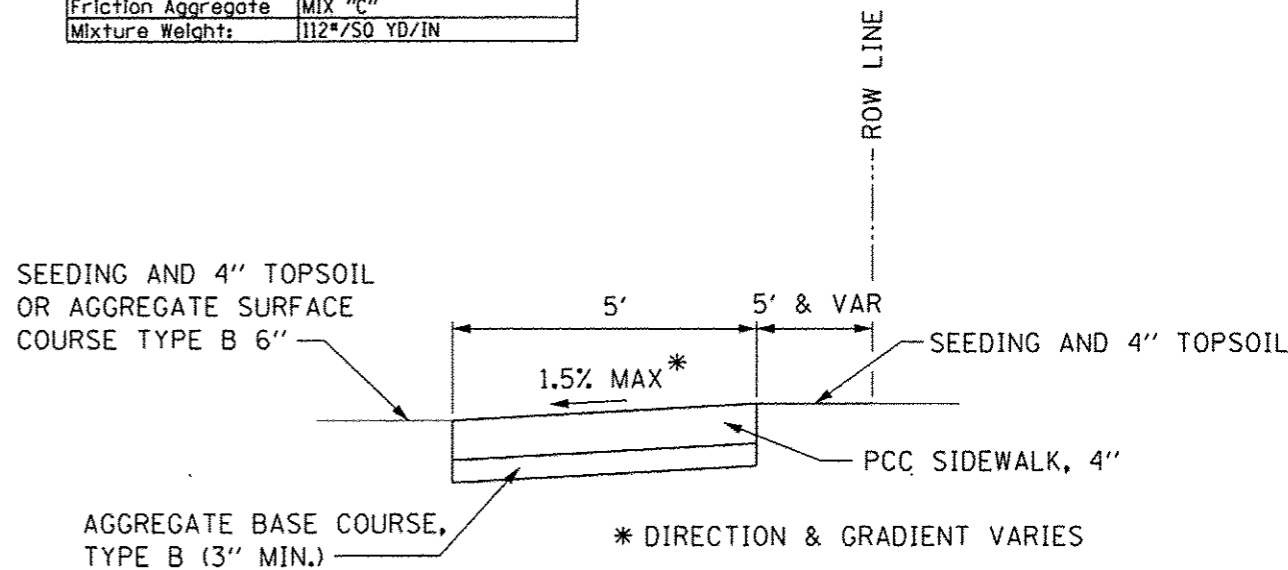
 Any protruding metal bars shall be removed prior to the disposal of broken concrete at approved disposal sites.

 Please note that a minimum of four weeks shall be allowed for the District to obtain the required waste site environmental clearances and six weeks for the required borrow site environmental clearances.

STATUS OF UTILITIES			
STATION	TYPE OF UTILITY	TYPE OF CONFLICT	DISPOSITION
SYCAMORE STREET	UTILITY POLE	SIDEWALK	CAUTION
101+00, 16' LT.	UTILITY POLE	SIDEWALK	CAUTION
102+12, 19' LT.	UTILITY POLE	SIDEWALK	CAUTION
103+12, 20' LT.	UTILITY POLE	SIDEWALK	CAUTION
104+13, 20' LT.	UTILITY POLE	SIDEWALK	CAUTION
105+22, 24' LT.	UTILITY POLE	SIDEWALK	CAUTION
106+40, 21' LT.	UTILITY POLE	SIDEWALK	CAUTION
106+62, 18' LT.	FIRE HYDRANT	SIDEWALK	CAUTION
111+18, 24' LT.	UTILITY POLE	SIDEWALK	CAUTION
111+18, 26' LT.	FIRE HYDRANT	SIDEWALK	CAUTION
111+91, 21' RT.	UTILITY POLE	SIDEWALK	CAUTION
HICKORY STREET			
200+12, 37' LT.	FIRE HYDRANT	SIDEWALK	CAUTION
203+47, 28' RT.	UTILITY POLE	SIDEWALK	CAUTION

HMA ASPHALT MIXTURE REQUIREMENTS

Mixture Uses(s):	INCIDENTAL HOT-MIX ASPHALT SURFACING
RAP % (Max)**:	10
AC/PG:	SBR OR SBS PG 64-22
Design Air Voids:	4.0% @ N = 50
Mixture Composition (Gradation Mixture):	IL 9.5 OR IL 12.5
Friction Aggregate:	MIX "C"
Mixture Weight:	112#/SQ YD/IN



PROPOSED TYPICAL SECTION
N.T.S.

FILE NAME: S:\Engineering\Projects\Chillicothe City of\20150802 South School STRS\400 CAD\403.Plans\PLN_HICKORY_1.dgn

DESIGNED - KMC	REVISED -
DRAWN - DLC	REVISED -
CHECKED -	REVISED -
DATE - 02-05-16	REVISED -

**STATE OF ILLINOIS
DEPARTMENT OF TRANSPORTATION**

**CHILICOTHE - SAFE ROUTES TO SCHOOL
GENERAL NOTES AND TYPICAL SECTION**

SCALE: N.T.S. SHEET OF SHEETS STA. TO STA.

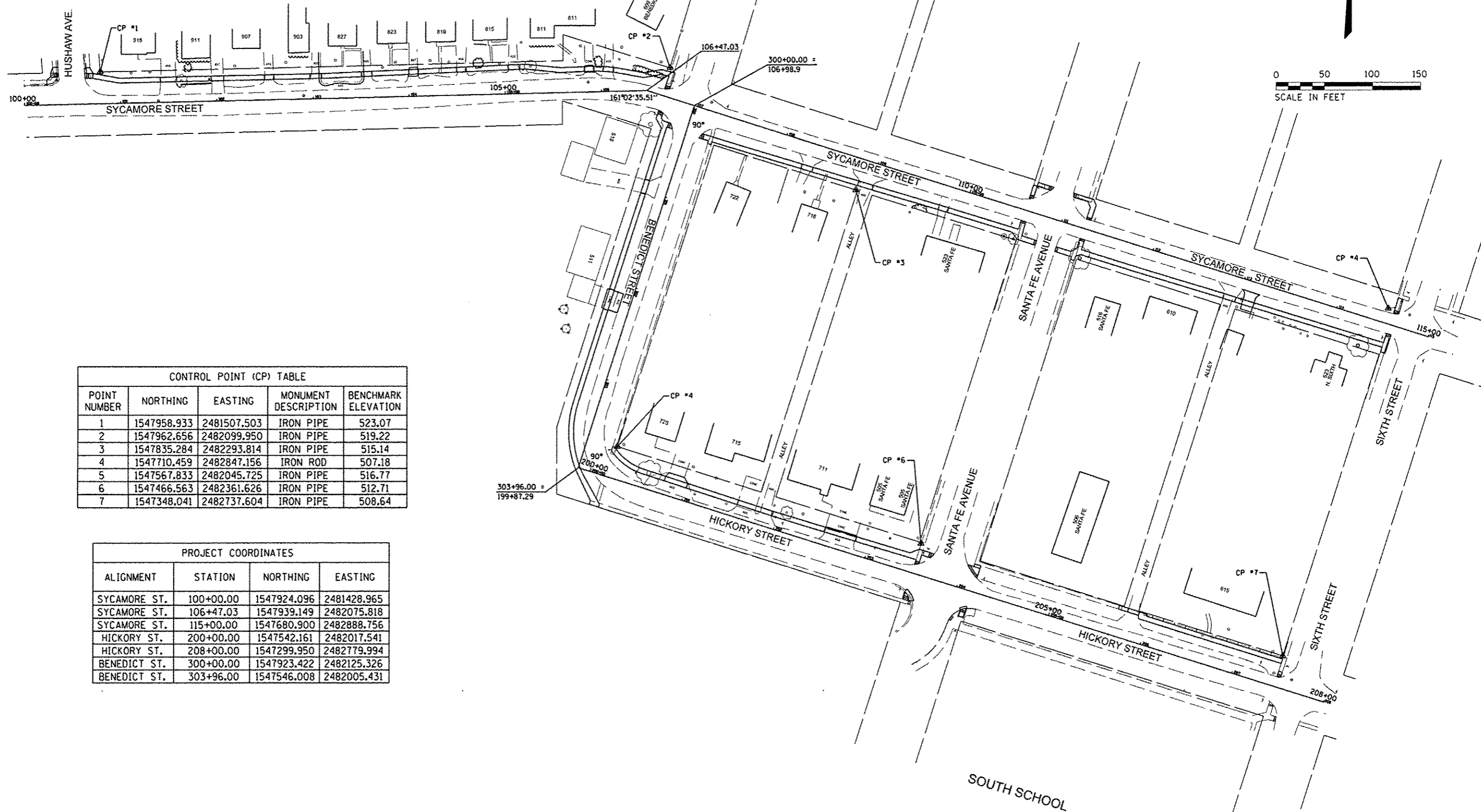
F.A. RTE.	SECTION	COUNTY	TOTAL SHEETS	SHEET NO.
	14-00038-00-SW	PEORIA	19	2
CONTRACT NO. 89684				
ILLINOIS FED. AID PROJECT				

SUMMARY OF QUANTITIES				PEORIA COUNTY	
				CONSTRUCTION TYPE CODE	
				ROADSIDE IMPROVEMENTS	
				0021	
CODE NO.	PAY ITEM	UNIT	TOTAL QUANTITY		
20100110	TREE REMOVAL (6 TO 15 UNITS DIAMETER)	UNIT	6	6	
20100210	TREE REMOVAL (OVER 15 UNITS DIAMETER)	UNIT	108	108	
20400800	FURNISHED EXCAVATION	CU YD	48	48	
21101615	TOPSOIL FURNISH AND PLACE, 4"	SQ YD	716	716	
25000110	SEEDING, CLASS 1A	ACRE	0.25	0.25	
25000400	NITROGEN FERTILIZER NUTRIENT	POUND	14	14	
25000500	PHOSPHORUS FERTILIZER NUTRIENT	POUND	14	14	
25000600	POTASSIUM FERTILIZER NUTRIENT	POUND	14	14	
25100115	MULCH, METHOD 2	ACRE	0.25	0.25	
35101598	AGGREGATE BASE COURSE, TYPE B 3"	SQ YD	1,405	1,405	
40200800	AGGREGATE SURFACE COURSE, TYPE B	TONS	32	32	
* 40800050	INCIDENTAL HOT-MIX ASPHALT SURFACING	TONS	12	12	
42300200	PORTLAND CEMENT CONCRETE DRIVEWAY PAVEMENT, 6 INCH	SQ YD	53	53	
42400100	PORTLAND CEMENT CONCRETE SIDEWALK 4 INCH	SQ FT	10,996	10,996	

* SPECIALTY ITEMS

SUMMARY OF QUANTITIES				PEORIA COUNTY	
				CONSTRUCTION TYPE CODE	
				ROADSIDE IMPROVEMENTS	
				0021	
CODE NO.	PAY ITEM	UNIT	TOTAL QUANTITY		
42400300	PORTLAND CEMENT CONCRETE SIDEWALK 6 INCH	SQ FT	1,645	1,645	
42400800	DETECTABLE WARNINGS	SQ FT	240	240	
44000200	DRIVEWAY PAVEMENT REMOVAL	SQ YD	127	127	
44000500	COMBINATION CURB AND GUTTER REMOVAL	FOOT	59	59	
44000600	SIDEWALK REMOVAL	SQ FT	1,021	1,021	
60603800	COMBINATION CONCRETE CURB AND GUTTER, TYPE B-6.12	FOOT	59	59	
67100100	MOBILIZATION	L SUM	1	1	
Z0013798	CONSTRUCTION LAYOUT	L SUM	1	1	
Z0042300	PORTLAND CEMENT CONCRETE SIDEWALK CURB	FOOT	30	30	
X2010400	STUMP REMOVAL ONLY	UNIT	30	30	
X7010216	TRAFFIC CONTROL AND PROTECTION, (SPECIAL)	L SUM	1	1	

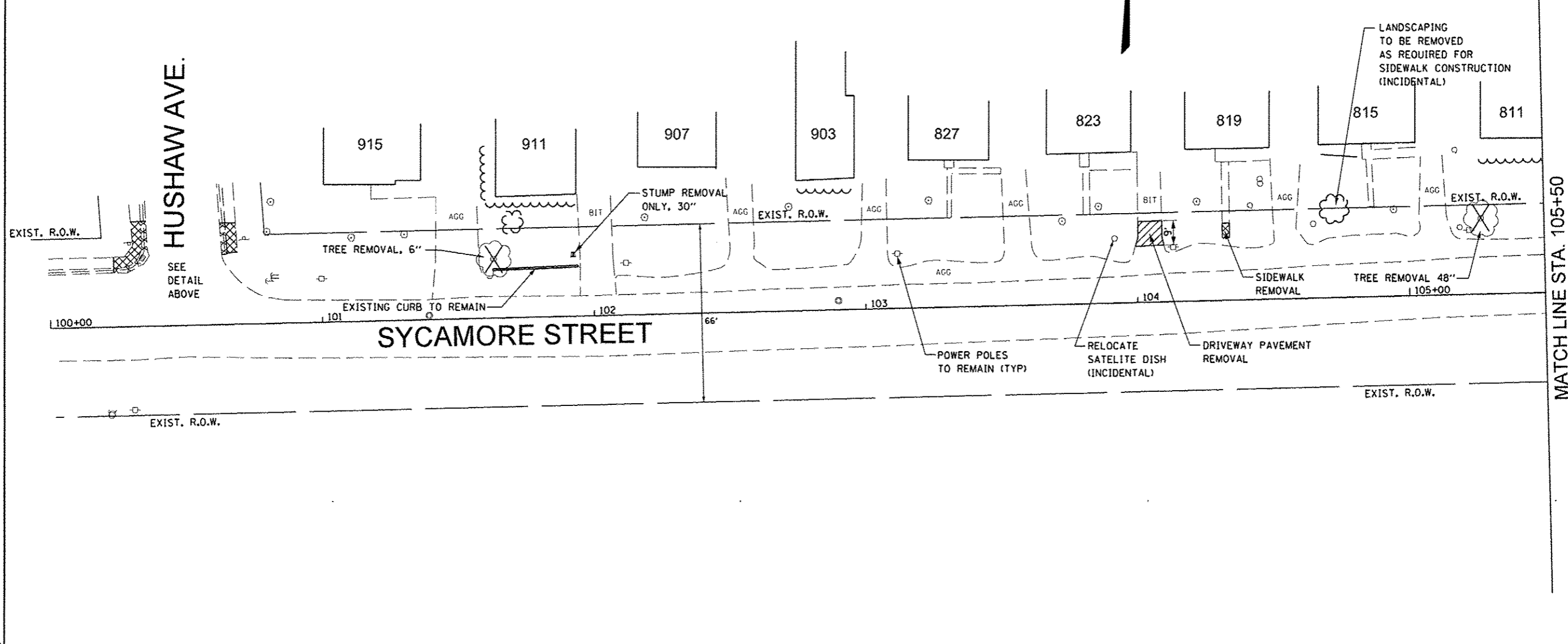
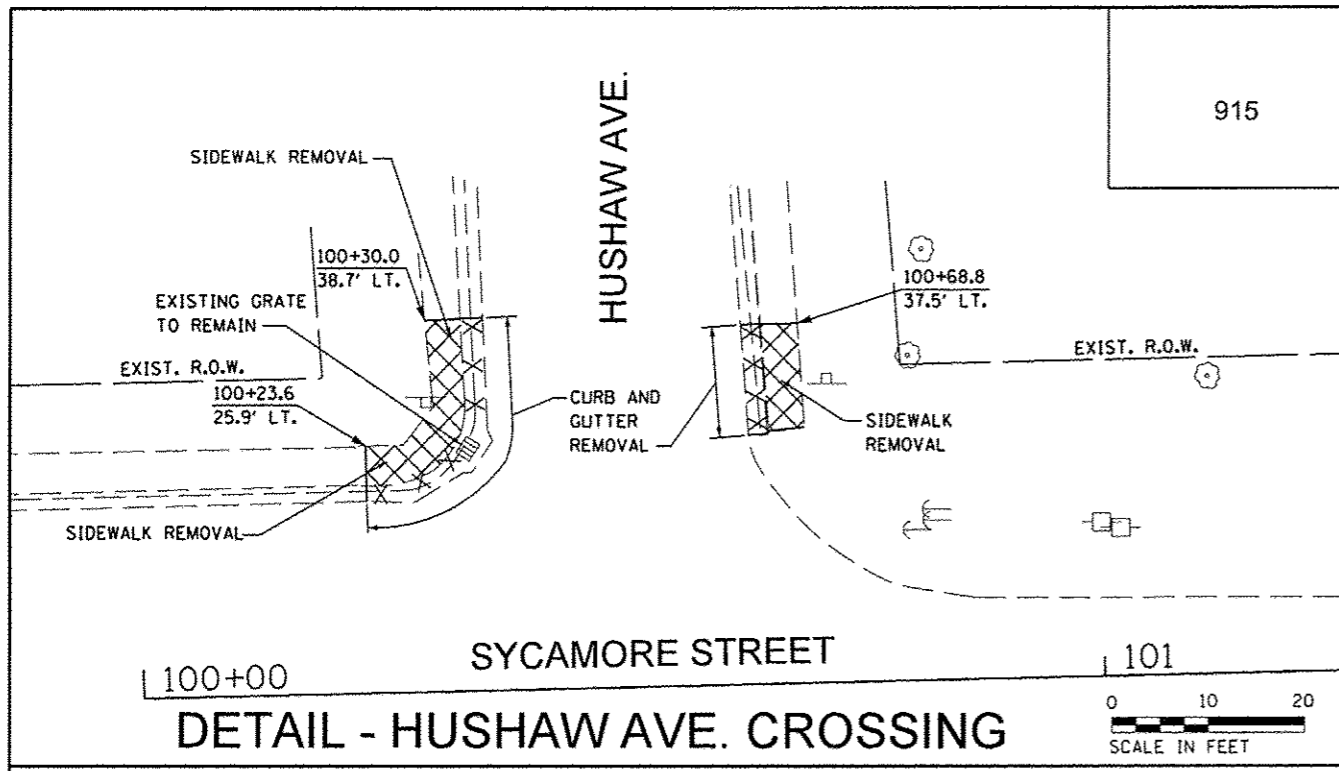
• SPECIALTY ITEMS



CONTROL POINT (CP) TABLE				
POINT NUMBER	NORTHING	EASTING	MONUMENT DESCRIPTION	BENCHMARK ELEVATION
1	1547958.933	2481507.503	IRON PIPE	523.07
2	1547962.656	2482099.950	IRON PIPE	519.22
3	1547835.284	2482293.814	IRON PIPE	515.14
4	1547710.459	2482847.156	IRON ROD	507.18
5	1547567.833	2482045.725	IRON PIPE	516.77
6	1547466.563	2482361.626	IRON PIPE	512.71
7	1547348.041	2482737.604	IRON PIPE	508.64

PROJECT COORDINATES			
ALIGNMENT	STATION	NORTHING	EASTING
SYCAMORE ST.	100+00.00	1547924.096	2481428.965
SYCAMORE ST.	106+47.03	1547939.149	2482075.818
SYCAMORE ST.	115+00.00	1547680.900	2482888.756
HICKORY ST.	200+00.00	1547542.161	2482017.541
HICKORY ST.	208+00.00	1547299.950	2482779.994
BENEDICT ST.	300+00.00	1547923.422	2482125.326
BENEDICT ST.	303+96.00	1547546.008	2482005.431

FILE NAME	DESIGNED - KMC	REVISED -	STATE OF ILLINOIS DEPARTMENT OF TRANSPORTATION	CHILICOTHE - SAFE ROUTES TO SCHOOL		F.A. R.T.E.	SECTION	COUNTY	TOTAL SHEETS	SHEET NO.
	DRAWN - DLC	REVISED -		LINE DIAGRAM, COORDINATES AND BENCHMARKS		14-00038-00-SW	PEORIA	19	7	
	CHECKED -	REVISED -		SCALE: SHEET 1 OF 1 SHEETS STA. TO STA.		CONTRACT NO. 89684		ILLINOIS FED. AID PROJECT		
PLOT SCALE = 1"=40' (1:1617)	DATE - 02-05-16	REVISED -								



FILE NAME :
S:\Engineering\Projects\
Chillicothe City of\
20150062 South School STRS\
400 CAD\403_Plan\PLN_SYCAMORE_1.dgn

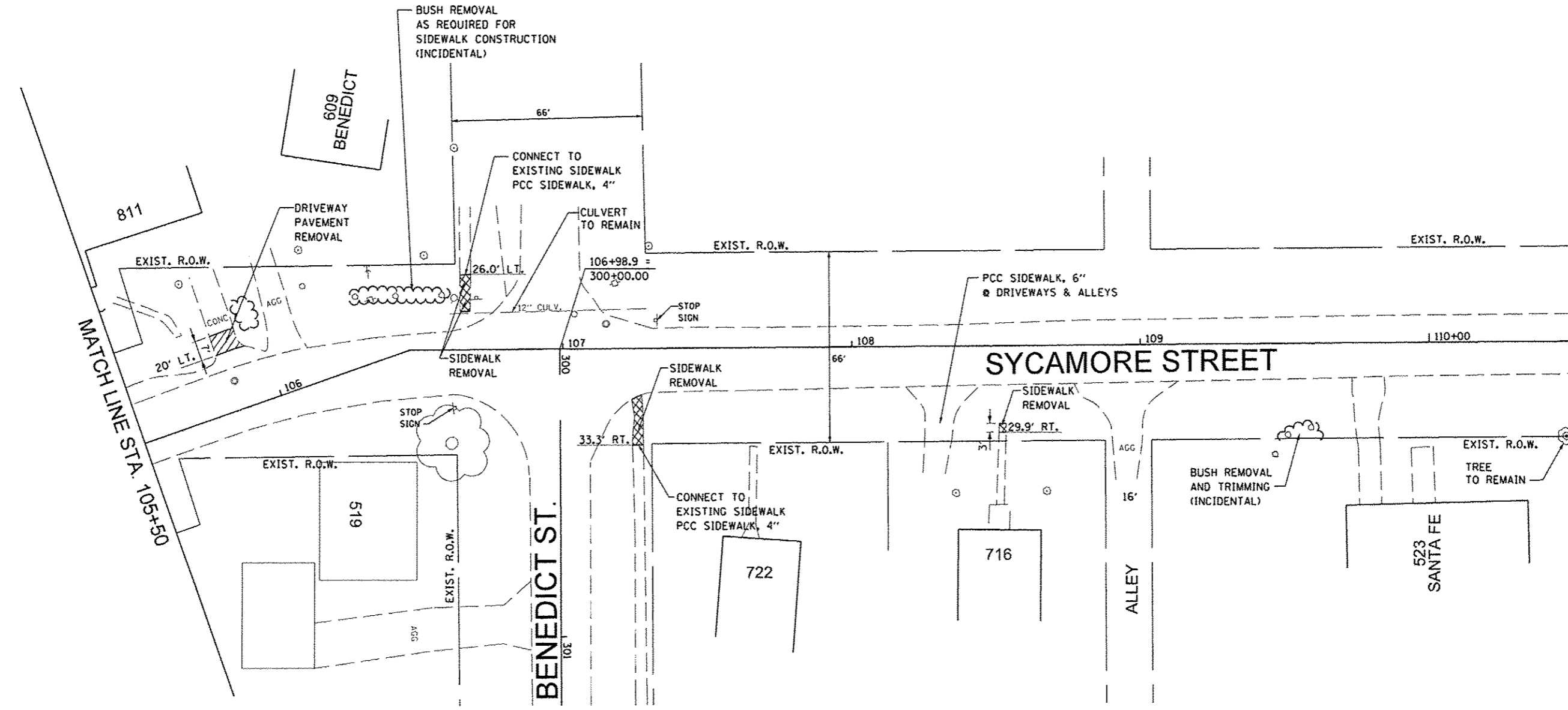
DESIGNED - KMC	REVISED -
DRAWN - DLC	REVISED -
CHECKED -	REVISED -
DATE - 02-05-16	REVISED -

**STATE OF ILLINOIS
DEPARTMENT OF TRANSPORTATION**

**CHILLICOTHE - SYCAMORE STREET
SAFE ROUTES TO SCHOOL - REMOVAL PLAN**

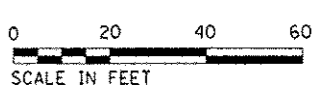
SCALE: SHEET 1 OF 3 SHEETS STA. 100+00 TO STA. 105+50

F.A. RTE.	SECTION	COUNTY	TOTAL SHEETS	SHEET NO.
	14-00038-00-SW	PEORIA	19	8
CONTRACT NO. 89684				
ILLINOIS FED. AID PROJECT				



MATCH LINE STA. 105+50

MATCH LINE STA. 110+50



FILEL\$

FILE NAME :
 S:/Engineering/Projects/
 Chillicothe City of/
 20150062 South School STRS/
 400 CAD/403_Plans/
 PLN_SYCAMORE_2.dgn

DESIGNED - KMC
 DRAWN - DLC
 CHECKED -
 DATE - 02-05-16

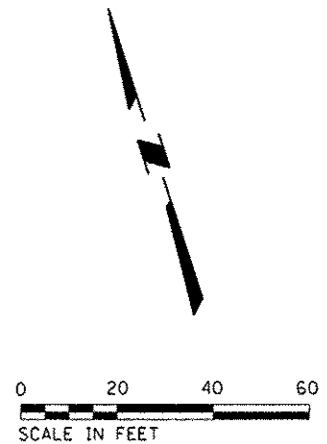
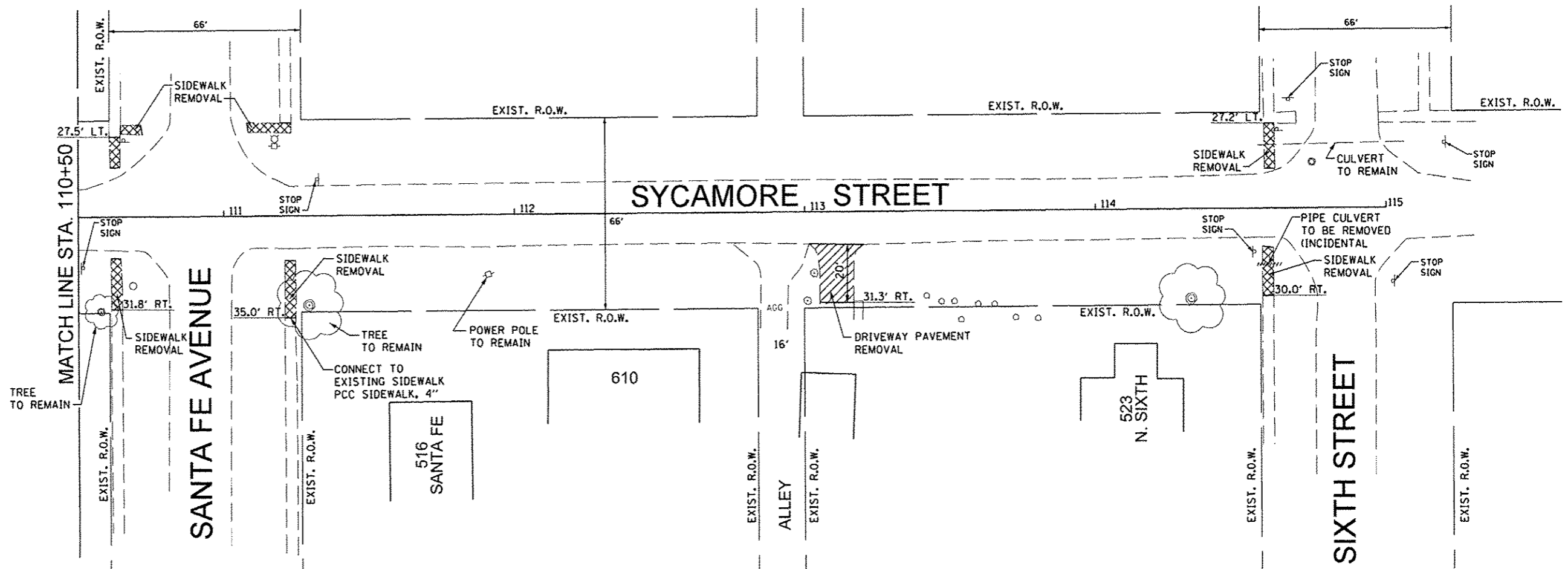
REVISÉ -
 REVISED -
 REVISED -
 REVISED -

**STATE OF ILLINOIS
 DEPARTMENT OF TRANSPORTATION**

**CHILICOTHE - SYCAMORE STREET
 SAFE ROUTES TO SCHOOL - REMOVAL PLAN**

SCALE: SHEET 2 OF 3 SHEETS STA. 105+50 TO STA. 110+50

F.A. RTE.	SECTION	COUNTY	TOTAL SHEETS	SHEET NO.
	14-00038-00-SW	PEORIA	19	9
CONTRACT NO. 89684				
ILLINOIS FED. AID PROJECT				



FILED
 FILE NAME
 S:\Engineering\Projects\
 Chillicothe City of\
 20150062 South School STRS\
 400 CAD/403_Pons\
 PLN_SYCAMORE_3.dgn

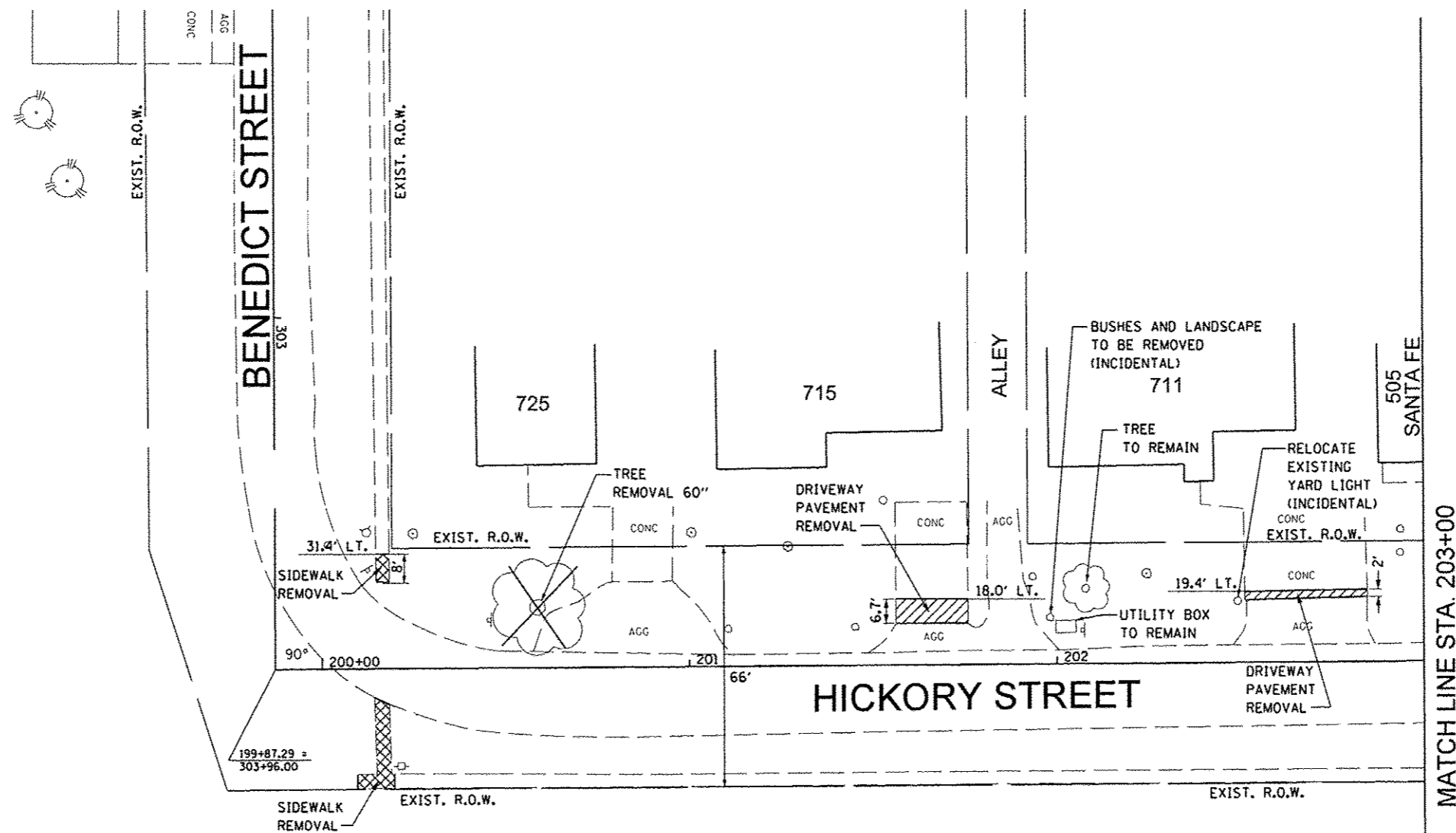
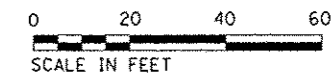
DESIGNED - KMC	REVISED -
DRAWN - DLC	REVISED -
CHECKED -	REVISED -
DATE - 02-05-16	REVISED -

**STATE OF ILLINOIS
 DEPARTMENT OF TRANSPORTATION**

**CHILICOTHE - SYCAMORE STREET
 SAFE ROUTES TO SCHOOL - REMOVAL PLAN**

SCALE: SHEET 3 OF 3 SHEETS STA. 110+50 TO STA. 115+00

F.A. RTE.	SECTION	COUNTY	TOTAL SHEETS	SHEET NO.
	14-00038-00-SW	PEORIA	19	10
CONTRACT NO. 89684				
ILLINOIS FED. AID PROJECT				



FILED

FILE NAME :
 S:\Engineering\Projects\
 Chillicothe City of\
 20150062 South School STRS\
 400 CAD/403_Planes\
 PLN_HICKORY_1.dgn

DESIGNED - KMC
 DRAWN - DLC
 CHECKED -
 DATE - 02-05-16

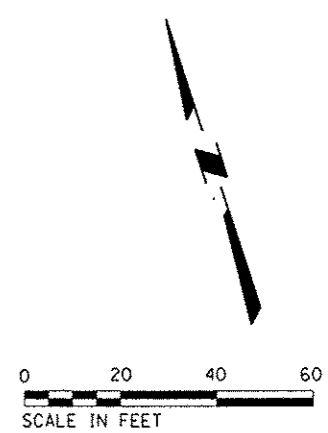
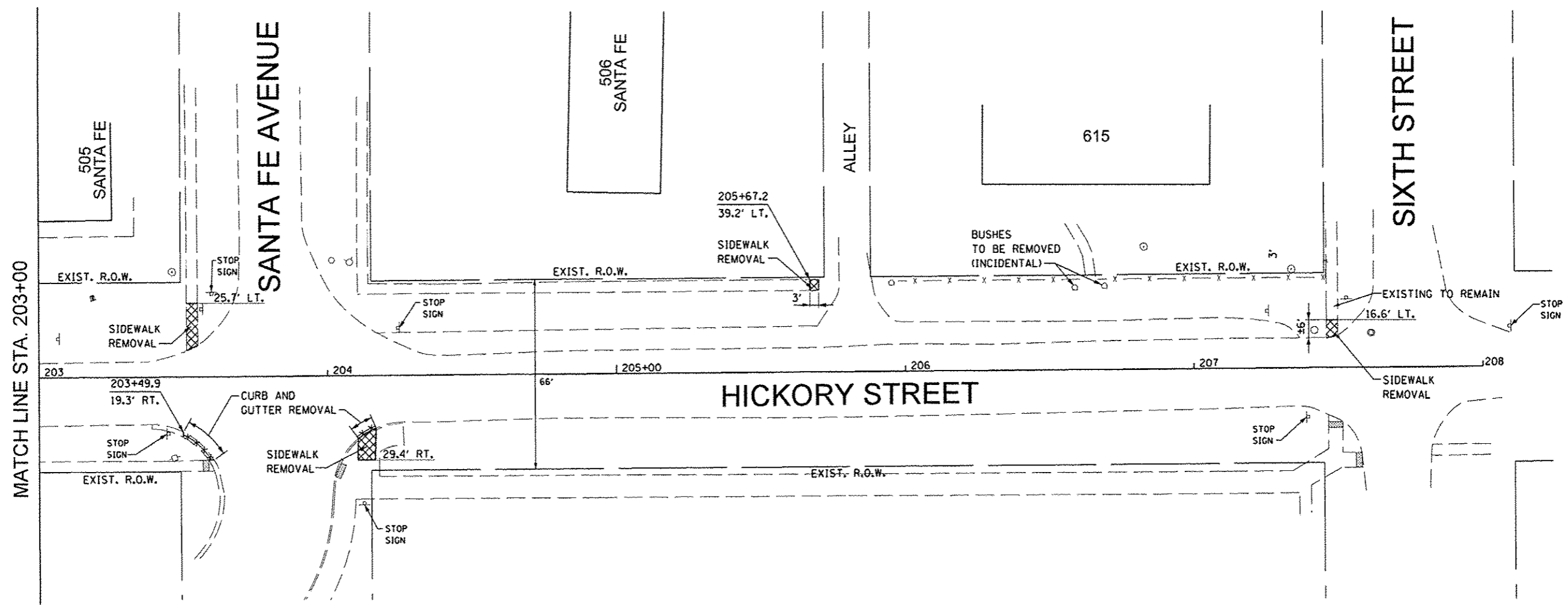
REVISIED -
 REVISIED -
 REVISIED -
 REVISIED -

STATE OF ILLINOIS
 DEPARTMENT OF TRANSPORTATION

CHILICOTHE - HICKORY ST.
 SAFE ROUTES TO SCHOOL - REMOVAL PLAN

SCALE: SHEET 1 OF 2 SHEETS STA. 200+00 TO STA. 203+00

F.A. RTE.	SECTION	COUNTY	TOTAL SHEETS	SHEET NO.
	14-00038-00-SW	PEORIA	19	11
			CONTRACT NO. 89684	
ILLINOIS FED. AID PROJECT				



FILE NAME:
 S:\Engineering\Projects\
 Chillicothe City of\
 20150062 South School STRS\
 400 CAD\403_Plan\PLN_HICKORY_2.dgn

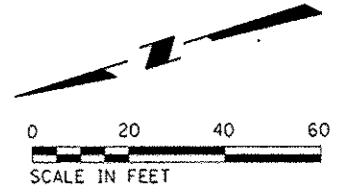
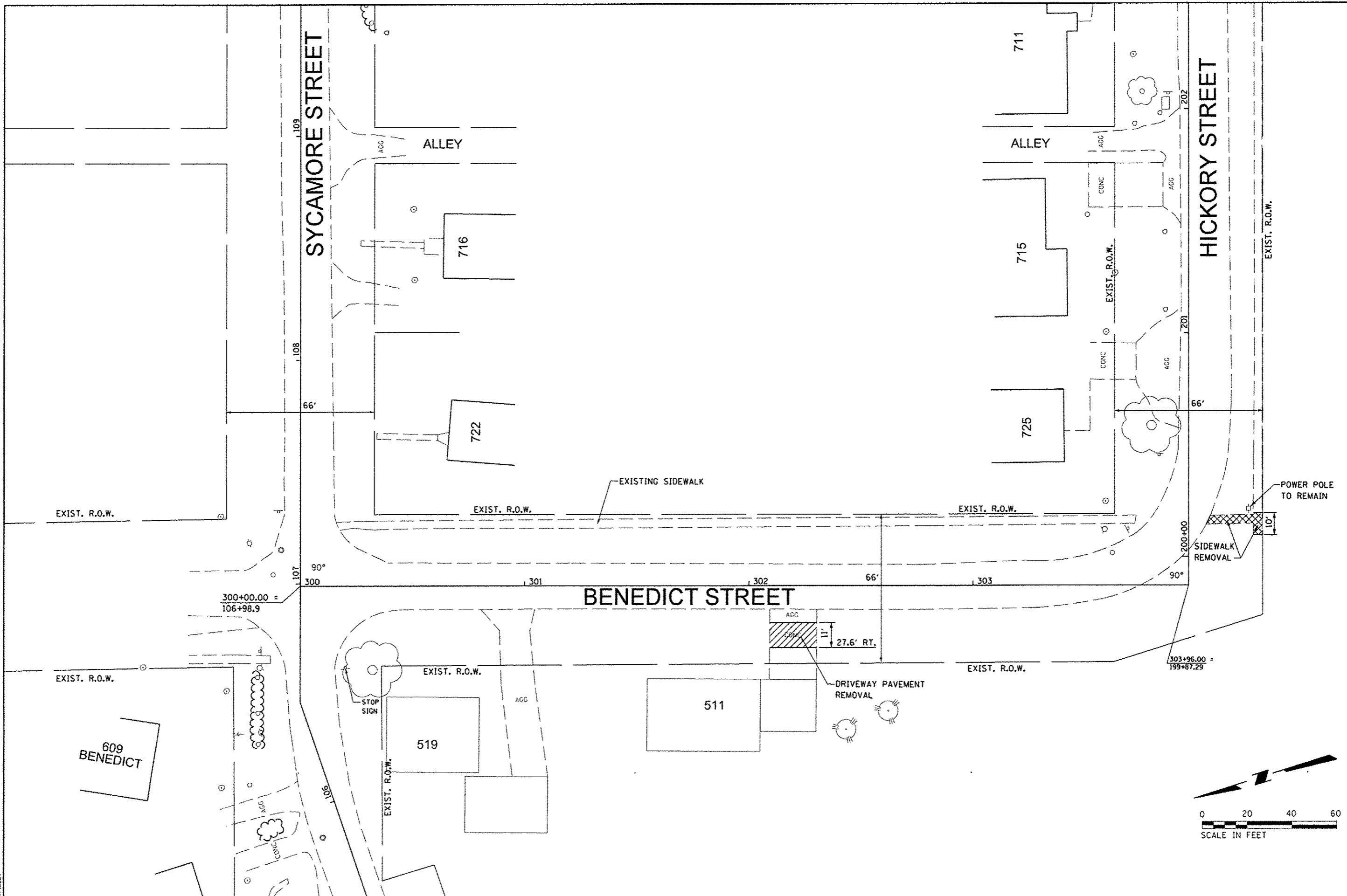
DESIGNED - KMC	REVISED -
DRAWN - DLC	REVISED -
CHECKED -	REVISED -
DATE - 02-05-16	REVISED -

**STATE OF ILLINOIS
 DEPARTMENT OF TRANSPORTATION**

**CHILICOTHE - HICKORY ST.
 SAFE ROUTES TO SCHOOL - REMOVAL PLAN**

SCALE: SHEET 2 OF 2 SHEETS STA. 203+00 TO STA. 208+00

F.A. RTE.	SECTION	COUNTY	TOTAL SHEETS	SHEET NO.
	14-00038-00-SW	PEORIA	19	12
CONTRACT NO.				
ILLINOIS FED. AID PROJECT				



FILE NAME :
S:\Engineering\Projects\
Chillicothe City of\
20150038 South School STRS\
400 CAD\403_Plan\PLN_HICKORY_1.dgn

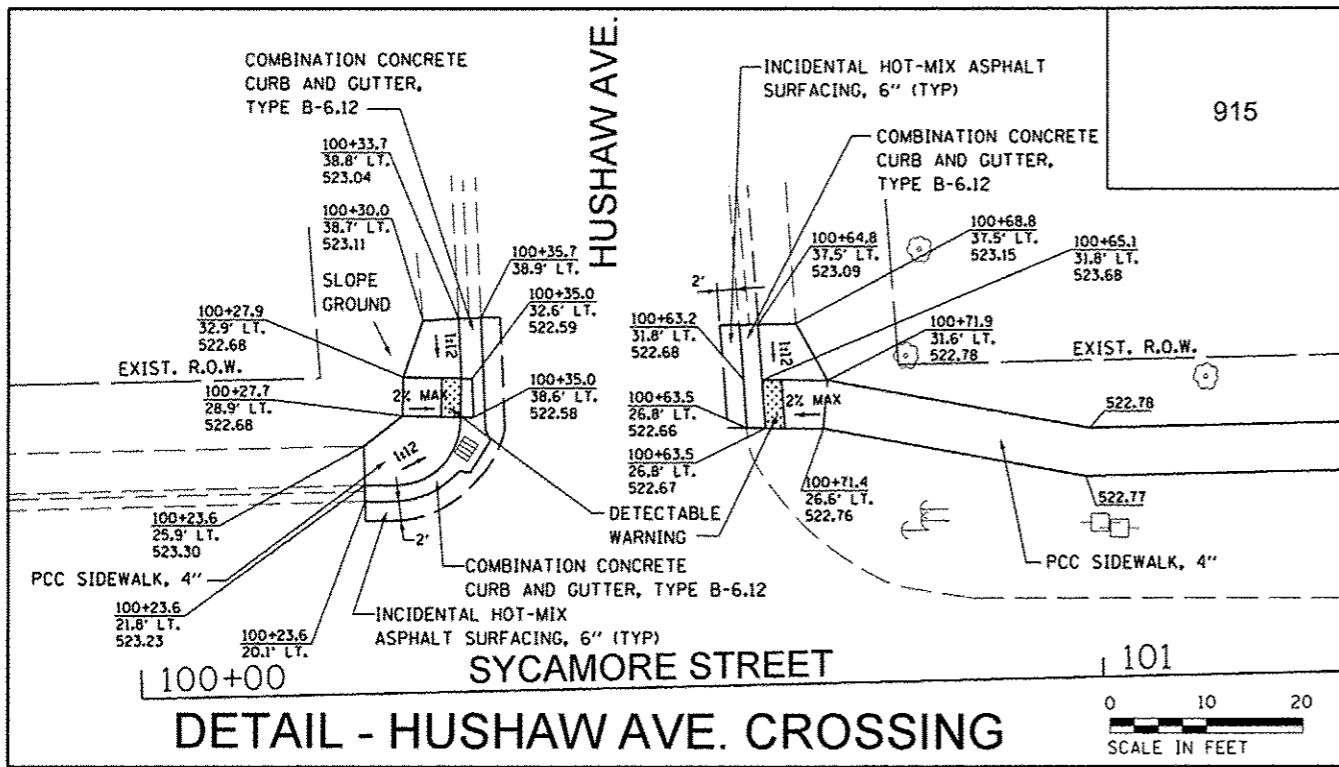
DESIGNED - KMC
DRAWN - DLC
CHECKED -
DATE - 02-05-16

REVISÉ -
REVISÉ -
REVISÉ -
REVISÉ -

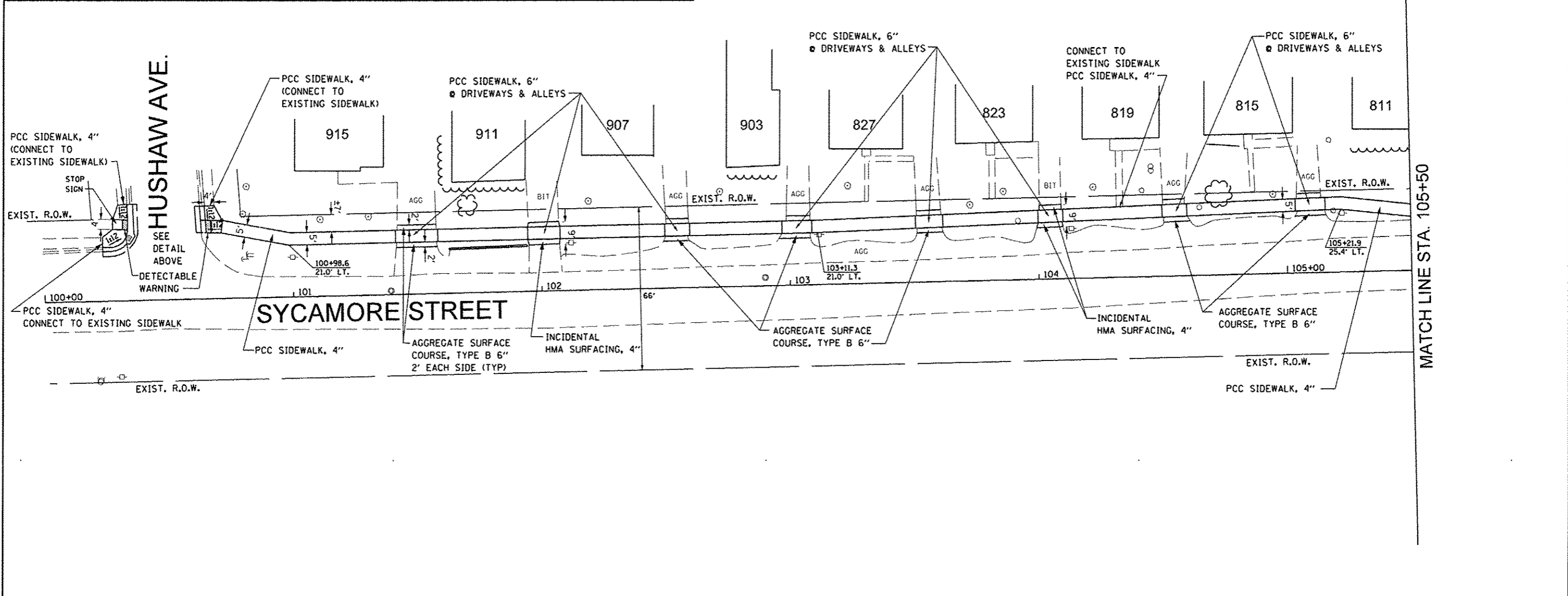
STATE OF ILLINOIS
DEPARTMENT OF TRANSPORTATION

CHILICOTHE - BENEDICT ST.
SAFE ROUTES TO SCHOOL - REMOVAL PLAN
SCALE: SHEET 1 OF 1 SHEETS STA. 200+00 TO STA. 203+00

F.A. RTE.	SECTION	COUNTY	TOTAL SHEETS	SHEET NO.
	14-00038-00-SW	PEORIA	19	13
CONTRACT NO. 89684				
ILLINOIS FED. AID PROJECT				



DETAIL - HUSHAW AVE. CROSSING



FILE NAME :
 S:\Engineering\Projects\
 Chillicothe City of\
 20150062 South School STRS\
 400 CAD/403_Plan/PLN_Sycamore_1.dgn

DESIGNED - KMC
 DRAWN - DLC
 CHECKED -
 DATE - 02-05-16

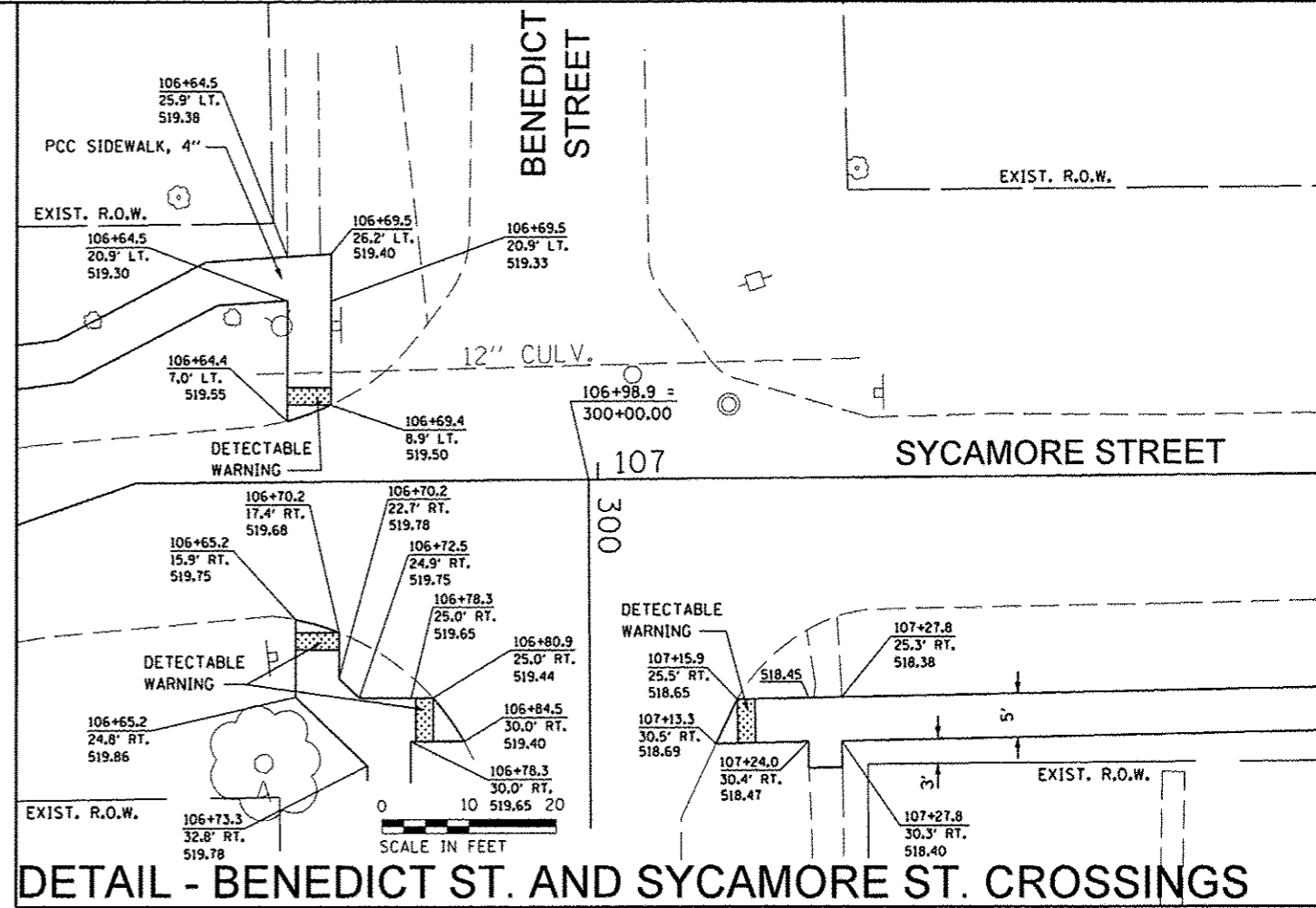
REVISI
 REVISI
 REVISI
 REVISI

STATE OF ILLINOIS
 DEPARTMENT OF TRANSPORTATION

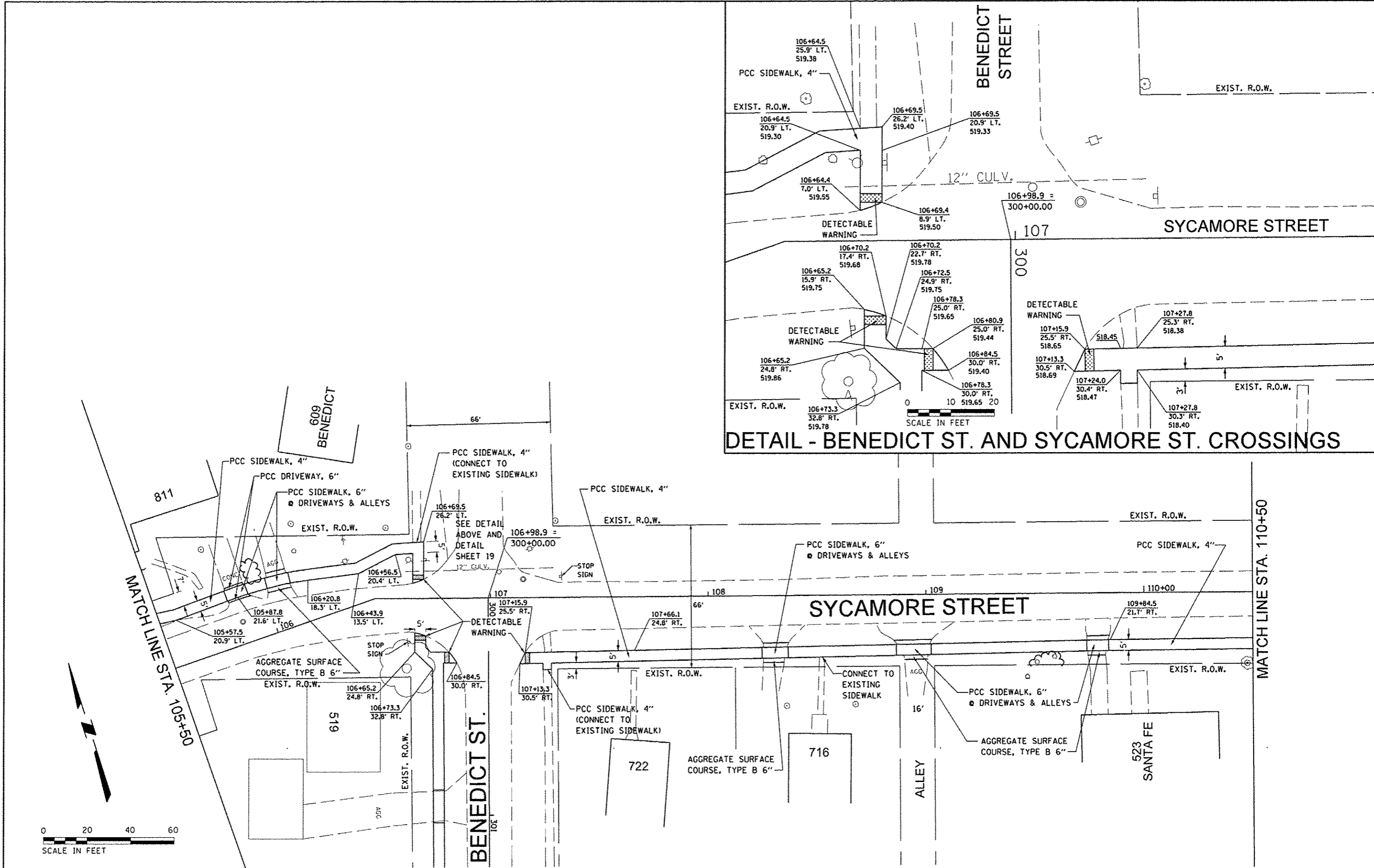
CHILICOTHE - SYCAMORE STREET
 SAFE ROUTES TO SCHOOL - PROPOSED PLAN

SCALE: SHEET 1 OF 3 SHEETS STA. 100+00 TO STA. 105+50

F.A. RTE.	SECTION	COUNTY	TOTAL SHEETS	SHEET NO.
	14-00038-00-SW	PEORIA	19	14
CONTRACT NO. 89684				
ILLINOIS FED. AID PROJECT				



DETAIL - BENEDICT ST. AND SYCAMORE ST. CROSSINGS



FILED \$
 FILE NAME -
 S:\Engineering\Projects\
 Chillicothe City of\
 20150062 South School STRS\
 400 CAD\403_Plans\
 PLN_SYCAMORE_2.dgn

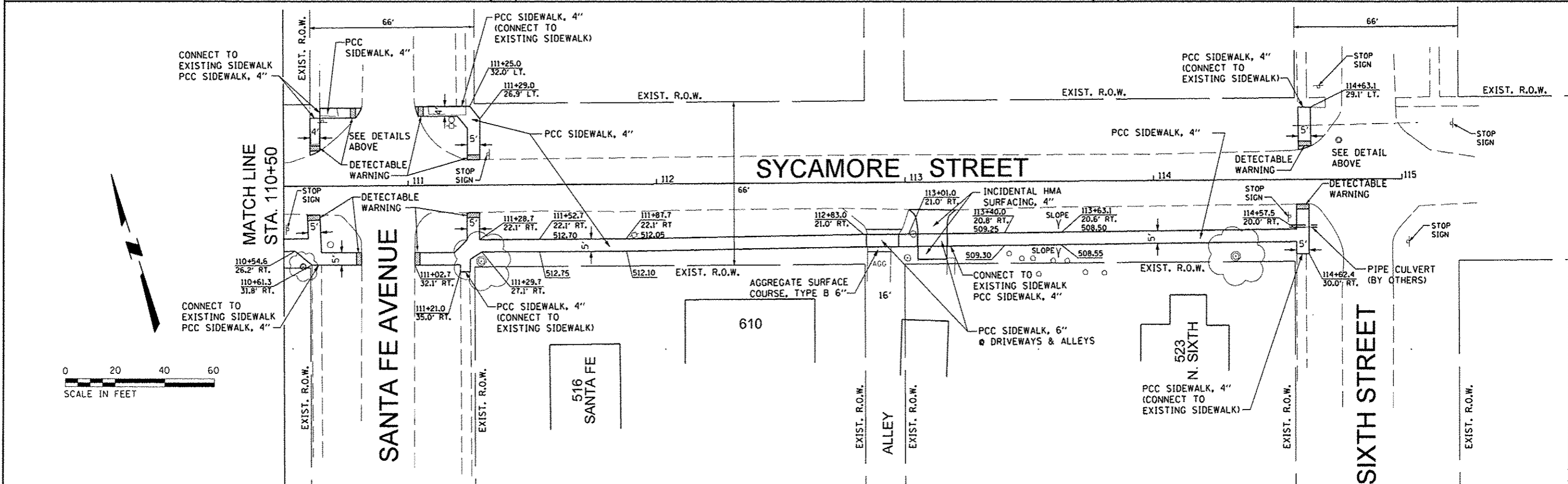
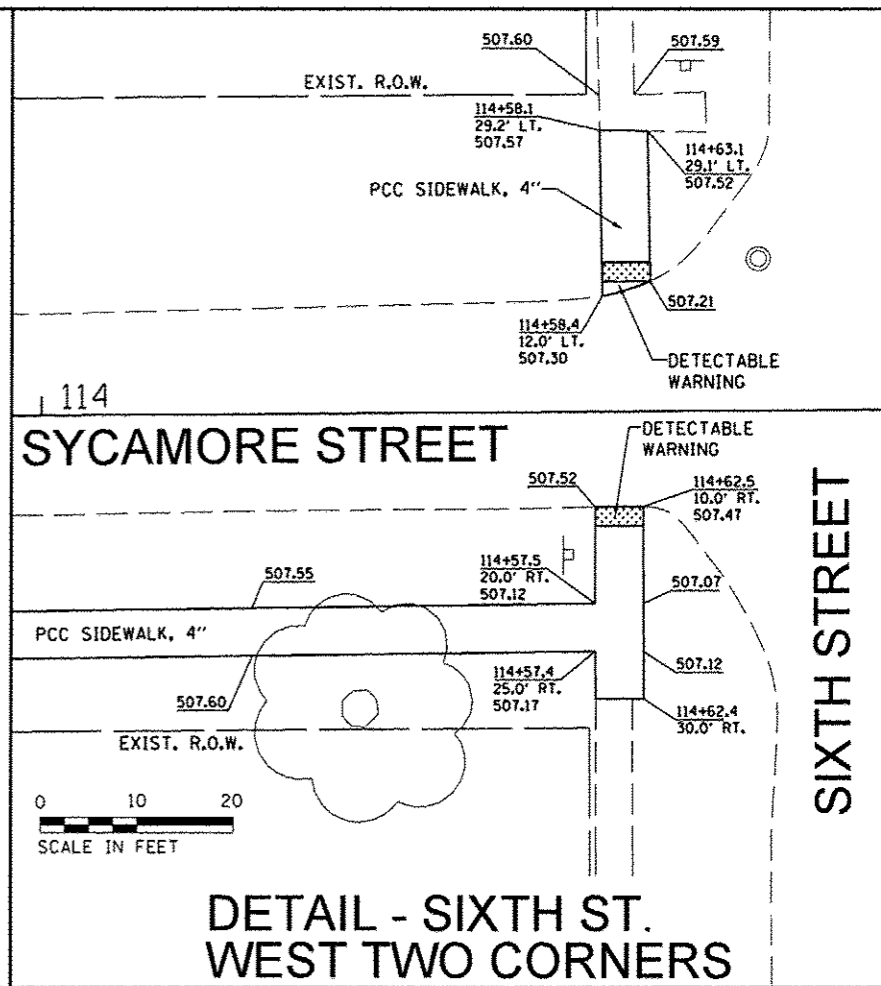
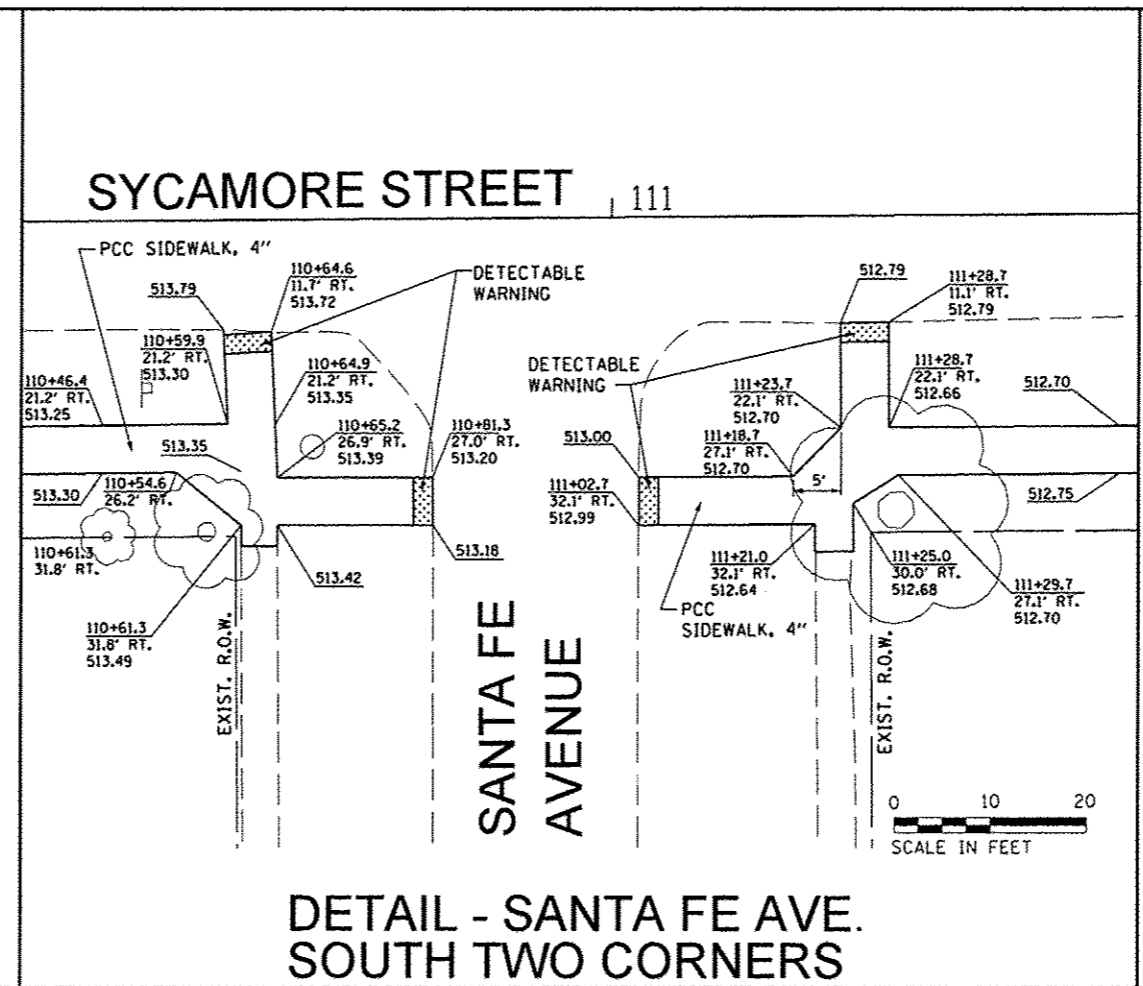
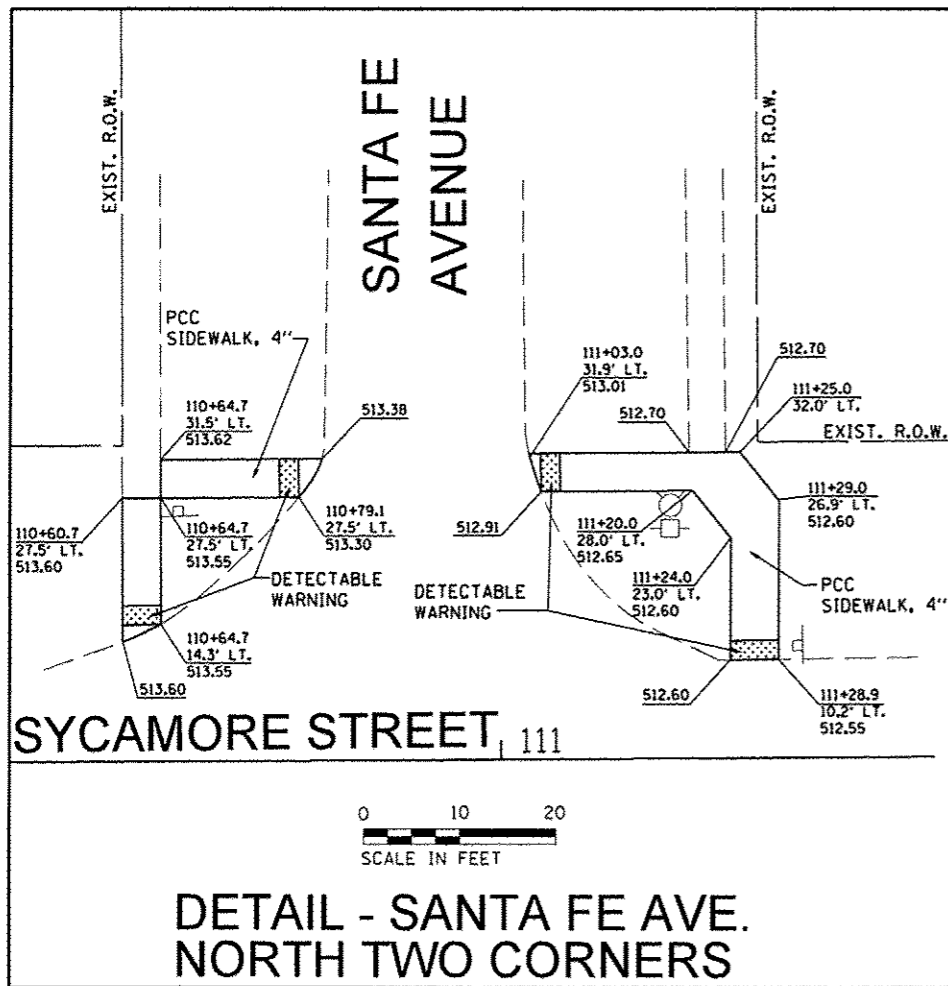
DESIGNED - KMC	REVISED -
DRAWN - DLC	REVISED -
CHECKED -	REVISED -
DATE - 02-05-16	REVISED -

**STATE OF ILLINOIS
 DEPARTMENT OF TRANSPORTATION**

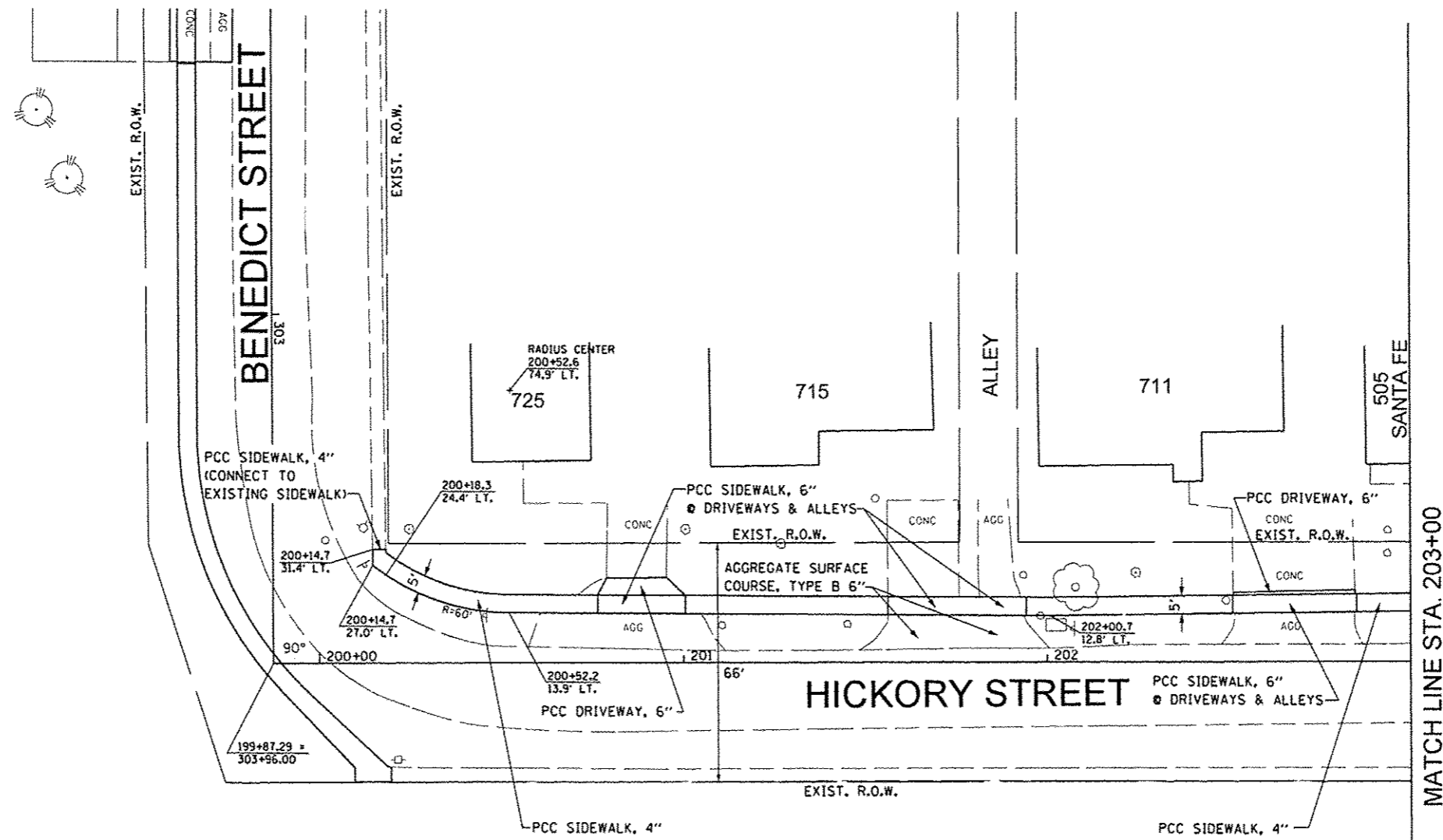
**CHILICOTHE - SYCAMORE STREET
 SAFE ROUTES TO SCHOOL - PROPOSED PLAN**

F.A. RTE.	SECTION	COUNTY	TOTAL SHEETS	SHEET NO.
	14-00038-00-SW	PEORIA	19	15
CONTRACT NO. 89684				
ILLINOIS FED. AID PROJECT				

SCALE: SHEET 2 OF 3 SHEETS STA. 105+50 TO STA. 110+50



FILE NAME: S:\Engineering\Projects\ Chilischope City of\ 20150062 South School STRS\ 400 CAD\403_Plans\ PLN_SYCAMORE_3.dgn	DESIGNED - KMC	REVISED -	STATE OF ILLINOIS DEPARTMENT OF TRANSPORTATION	CHILICOTHE - SYCAMORE STREET SAFE ROUTES TO SCHOOL - PROPOSED PLAN	F.A. RTE.	SECTION	COUNTY	TOTAL SHEETS	SHEET NO.
	DRAWN - DLC CHECKED - DATE - 02-05-16	REVISED - REVISED - REVISED -			14-00038-00-SW PEORIA 19 CONTRACT NO. 89684	ILLINOIS FED. AID PROJECT			
PLOT SCALE = 1"=40' (11X17) PLOT DATE = 02-05-16	SCALE: SHEET 3 OF 3 SHEETS STA. 110+50 TO STA. 115+00								



S:\Engineering\Projects\Chillicothe City of\20190002 South School STRS\400 CAD\403\Plans\PLN_HICKORY_1.dgn

FILE NAME -
S:\Engineering\Projects\
Chillicothe City of\
20190002 South School STRS\
400 CAD\403\Plans\
PLN_HICKORY_1.dgn

DESIGNED - KMC	REvised -
DRAWN - DLC	REvised -
CHECKED -	REvised -
DATE - 02-05-16	REvised -

DESIGNED - KMC	REvised -
DRAWN - DLC	REvised -
CHECKED -	REvised -
DATE - 02-05-16	REvised -

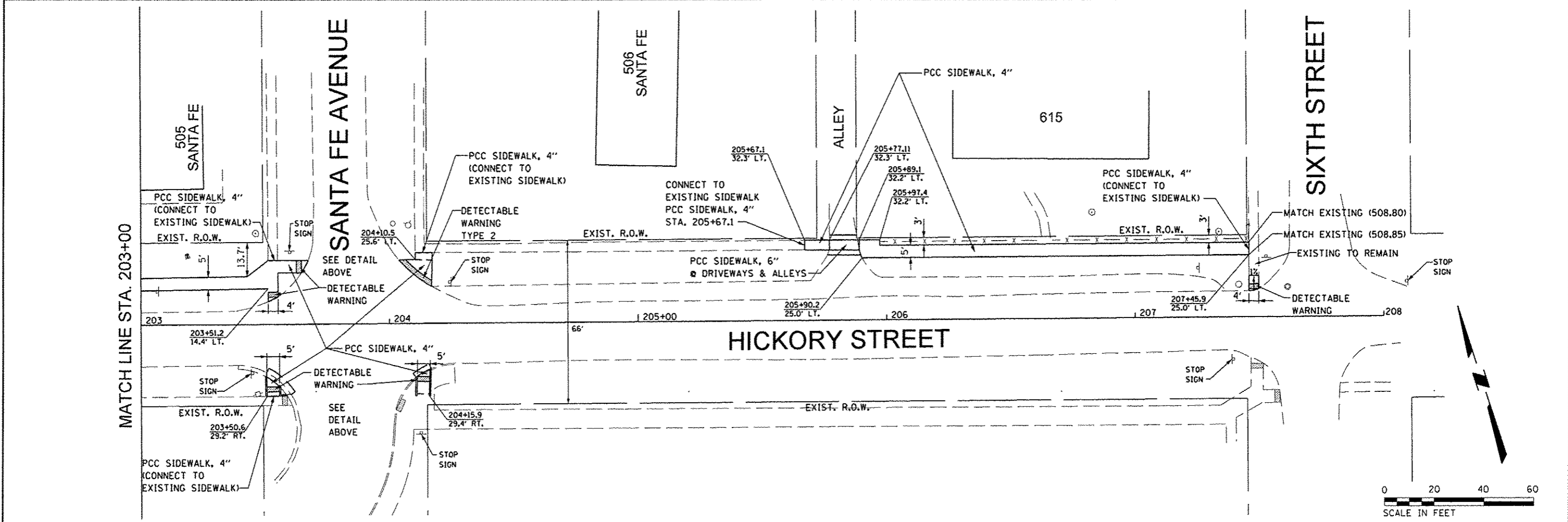
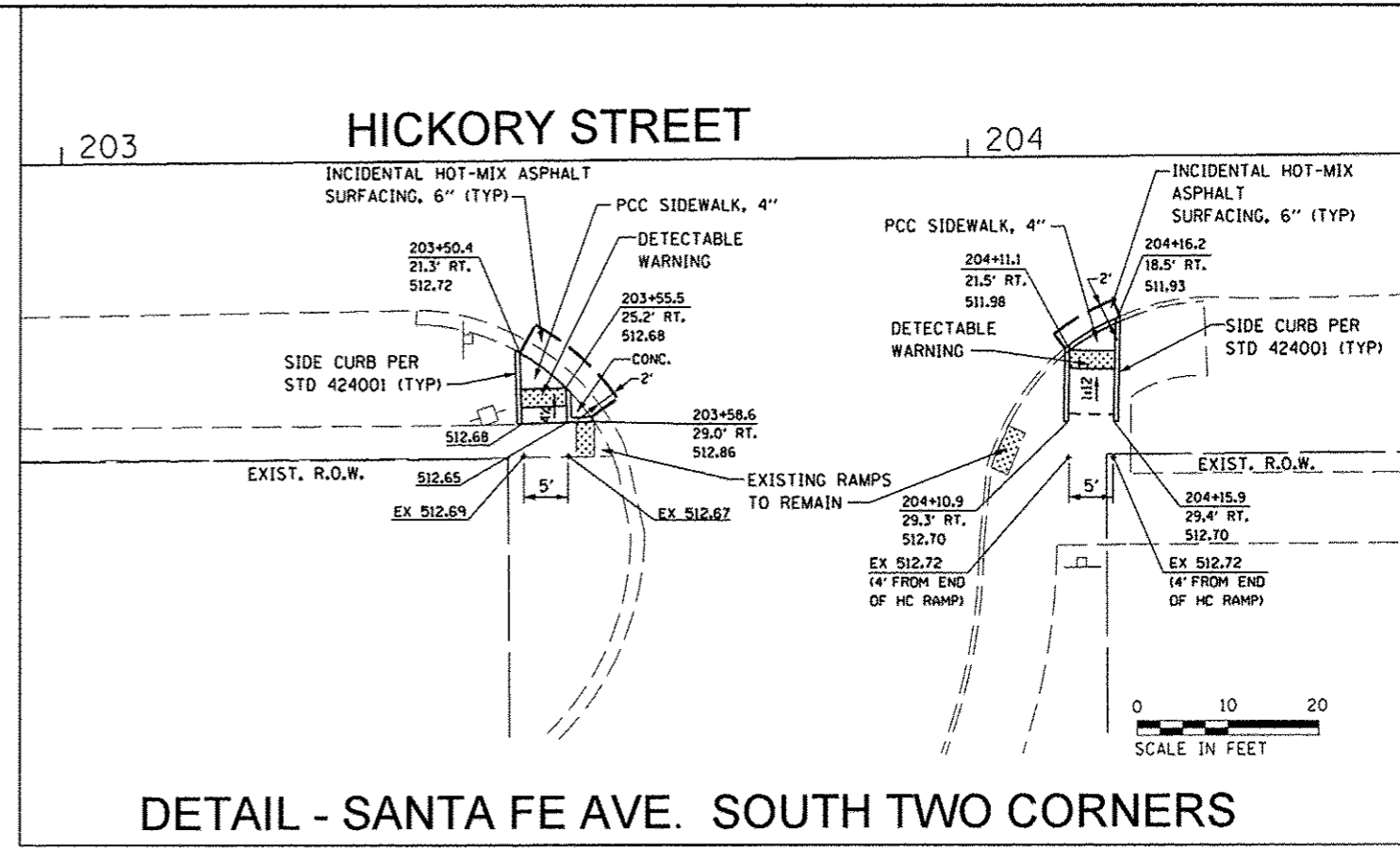
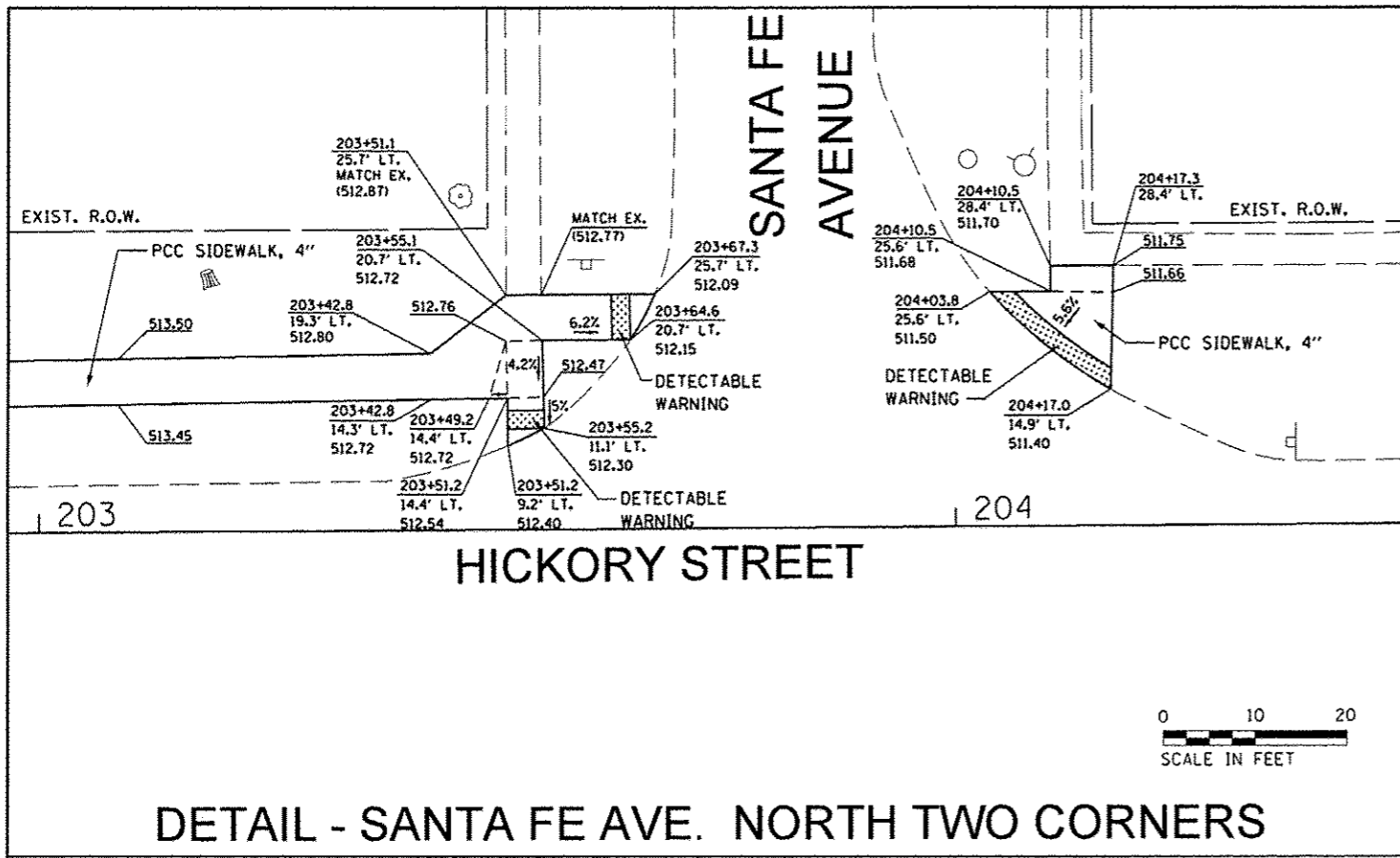
**STATE OF ILLINOIS
DEPARTMENT OF TRANSPORTATION**

**CHILLICOTHE - HICKORY ST.
SAFE ROUTES TO SCHOOL - PROPOSED PLAN**

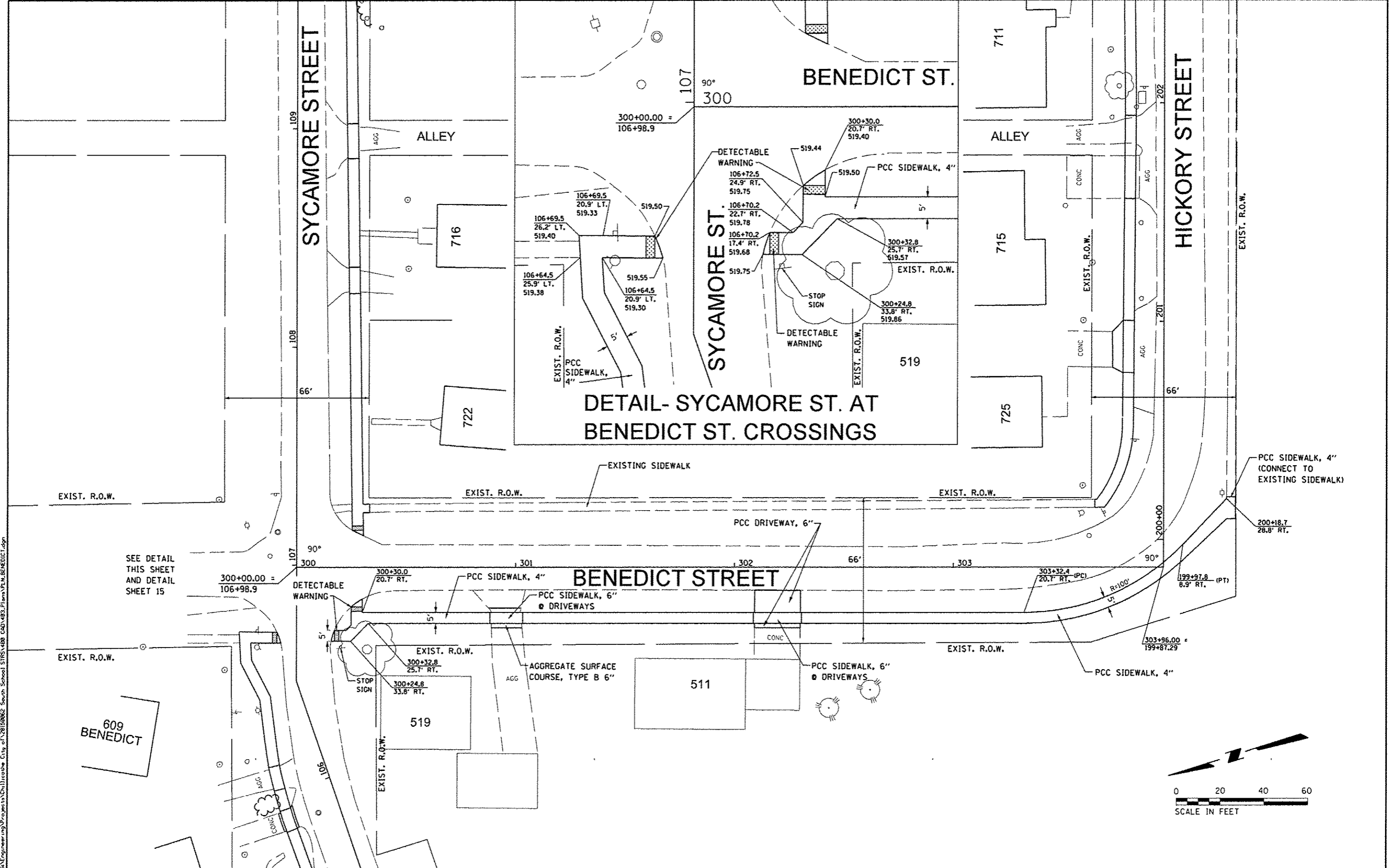
F.A. RTE.	SECTION	COUNTY	TOTAL SHEETS	SHEET NO.
	14-00038-00-SW	PEORIA	19	17
CONTRACT NO. 89684				

SCALE: SHEET 1 OF 2 SHEETS STA. 200+00 TO STA. 203+00

ILLINOIS FED. AID PROJECT

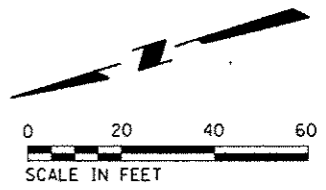


FILE NAME : S:\Engineering\Projects\ Chillicothe City of\ 20150032 South School STRS\ 400 CAD\403_Plan\ PLN_HICKORY_2.dgn	DESIGNED - KMC	REVISED -	STATE OF ILLINOIS DEPARTMENT OF TRANSPORTATION	CHILICOTHE - HICKORY ST. SAFE ROUTES TO SCHOOL - PROPOSED PLAN	F.A. RTE.	SECTION	COUNTY	TOTAL SHEETS	SHEET NO.
	DRAWN - DLC	REVISED -			14-00038-00-SW	PEORIA	19	18	
PLOT SCALE : 1"=48' (11X17) PLOT DATE : 02-05-16	CHECKED -	REVISED -	SCALE:	SHEET 2 OF 2 SHEETS	STA. 203+00 TO STA. 208+00	CONTRACT NO. ILLINOIS FED. AID PROJECT			
DATE - 02-05-16	REVISED -	REVISED -							



**DETAIL- SYCAMORE ST. AT
BENEDICT ST. CROSSINGS**

SEE DETAIL
THIS SHEET
AND DETAIL
SHEET 15



FILE NAME : S:\Engineering\Projects\ Chillicothe City of\ 20150062 South School STRS/ 400 CAB/403 Plans/ PLN_HICKORY_1.dgn	DESIGNED - KMC	REVISED -	STATE OF ILLINOIS DEPARTMENT OF TRANSPORTATION	CHILICOTHE - BENEDICT ST. SAFE ROUTES TO SCHOOL - PROPOSED PLAN		F.A. RTE.	SECTION	COUNTY	TOTAL SHEETS	SHEET NO.
	DRAWN - DLC CHECKED - DATE - 02-05-16	REVISED - REVISED - REVISED -		SCALE: 1"=40' (11X17) PLOT DATE = 02-05-16	SHEET 1 OF 1 SHEETS STA. 200+00 TO STA. 203+00	14-00038-00-SW CONTRACT NO. 89684	PEORIA 19 19	[ILLINOIS] FED. AID PROJECT		

S:\Engineering\Projects\Chillicothe City of\20150062 South School STRS\400 CAB\403 Plans\PLN_HICKORY_1.dgn