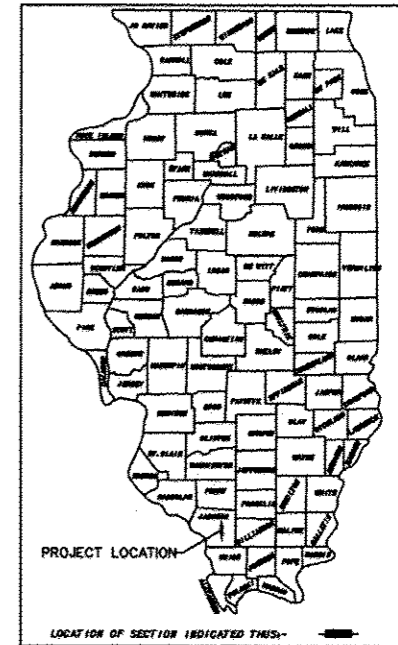


STATE OF ILLINOIS  
DEPARTMENT OF TRANSPORTATION  
DIVISION OF HIGHWAYS  
PLANS FOR THE PROPOSED IMPROVEMENTS TO  
AVA ROAD (FAS 1918 / FAU 9680)  
SECTION 12-00169-00-RS  
JACKSON COUNTY  
JOB NO. C-99-511-13  
PROJECT NO. RS-1918(117)  
CONTRACT NO. 99563

ROUTE	SECTION	COUNTY	TOWNSHIP	TOTAL SHEETS	SHEET NUMBER
FAS1918 FAU9680	12-00169-00-RS	JACKSON	SOMERSET	13	1
JOB NO. C-99-511-13			PROJECT NO. RS-1918(117)		
AVA ROAD			CONTRACT NO. 99563		

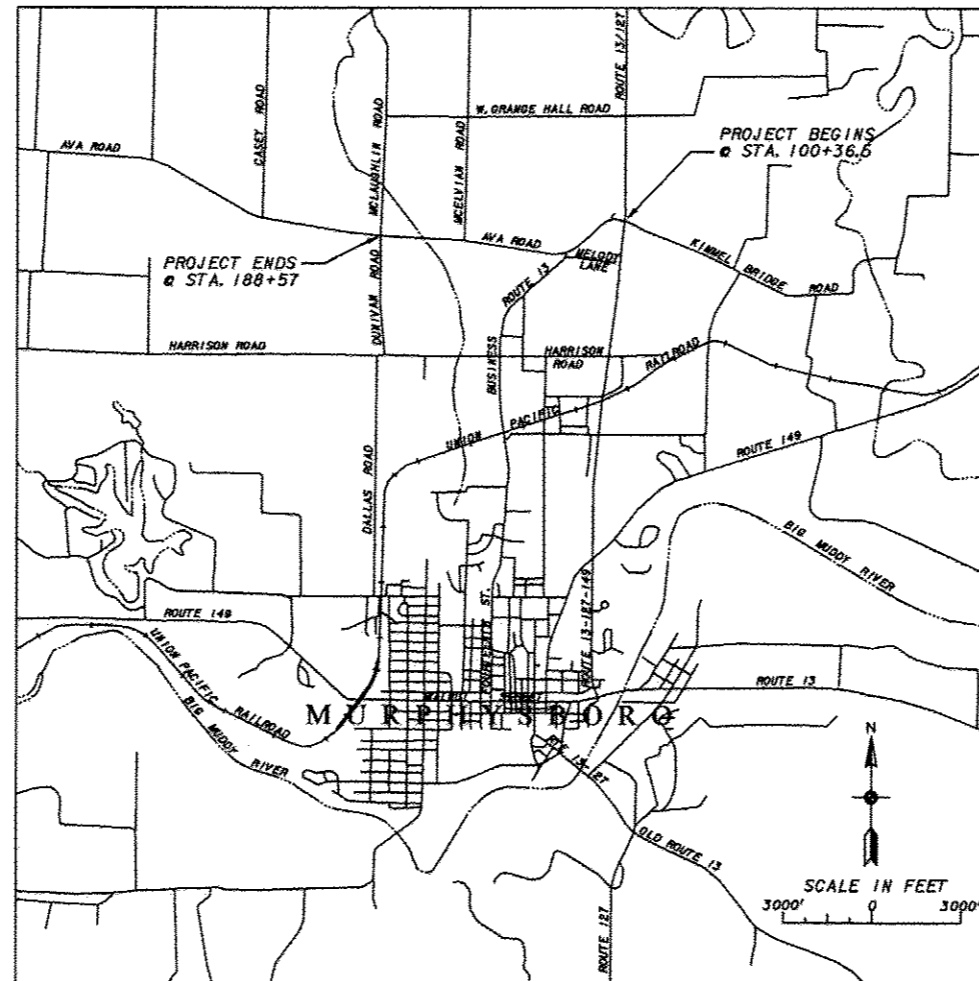


**INDEX OF SHEETS**

SHEET NO.	DESCRIPTION
1	TITLE AND COVER SHEET, INDEX OF SHEETS, LIST OF STANDARDS AND LOCATION MAP
2	SUMMARY OF QUANTITIES, STRUCTURAL DESIGN DATA, TYPICAL ENTRANCE DETAILS AND TYPICAL LAYOUT FOR SKIP DASH PAVEMENT MARKING
3	TYPICAL SECTIONS AND MIXTURE REQUIREMENTS
4	TYPICAL SECTIONS AND TYPICAL BRIDGE APPROACH PROFILE
5	PLAN - STA. 100+00 TO STA. 116+00
6	PLAN - STA. 116+00 TO 133+00
7	PLAN - STA. 133+00 TO STA. 163+00
8	PLAN - STA. 163+00 TO STA. 188+57
9	MISCELLANEOUS SCHEDULES
10	PAVEMENT MARKING PLAN - STA. 100+00 TO STA. 116+00
11	PAVEMENT MARKING PLAN - STA. 116+00 TO 133+00
12	PAVEMENT MARKING PLAN - STA. 133+00 TO STA. 163+00
13	PAVEMENT MARKING PLAN - STA. 163+00 TO STA. 188+57

**LIST OF STANDARDS**

STANDARD NO.	TITLE
701006-05	OFF-RD OPERATIONS, 2L, 2W, 15' (4.5 m) TO 24' (600 m) FROM PAVEMENT EDGE
701011-04	OFF-RD MOVING OPERATIONS, 2L, 2W, DAY ONLY
701301-04	LANE CLOSURE, 2L, 2W, SHORT TIME OPERATIONS
701306-03	LANE CLOSURE, 2L, 2W, SLOW MOVING OPERATIONS-DAY ONLY, FOR SPEEDS ≥ 45 MPH
701311-03	LANE CLOSURE 2L, 2W MOVING OPERATIONS-DAY ONLY
701326-04	LANE CLOSURE, 2L, 2W, PAVEMENT WIDENING, FOR SPEEDS > 45 MPH
701901-05	TRAFFIC CONTROL DEVICES
720001-01	SIGN PANEL MOUNTING DETAILS
728001-01	TELESCOPING STEEL SIGN SUPPORT
729001-01	APPLICATIONS OF TYPES A & B METAL POSTS (FOR SIGNS & MARKERS)
780001-05	TYPICAL PAVEMENT MARKINGS
781001-04	TYPICAL APPLICATIONS RAISED REFLECTIVE PAVEMENT MARKERS
B.L.R. 21-9	TYPICAL APPLICATION OF TRAFFIC CONTROL DEVICES FOR CONSTRUCTION ON RURAL LOCAL HIGHWAYS
B.L.R. 24-2	MAILBOX TURNOUT FOR LOCAL ROADS



LOCATION MAP

LAYOUT  
NET LENGTH OF PROJECT - 8,820.5 FT. - 1.671 MI.

SCALE  
PLAN "SEE PLAN SHEETS"

FUNCTIONAL CLASSIFICATION - MINOR ARTERIAL  
ADT = 3,800



Ted R. Beff  
TED R. BEFF, P.E.  
REG. NO. 062-063726  
DATE 2/29/16  
EXPIRES 11-30-17

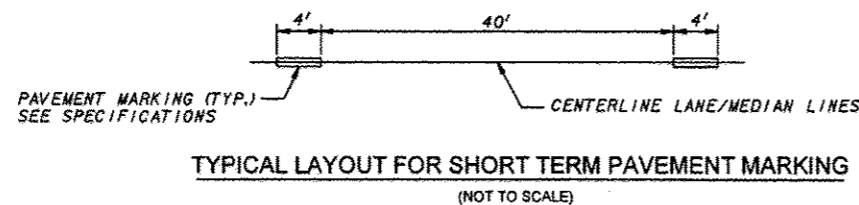
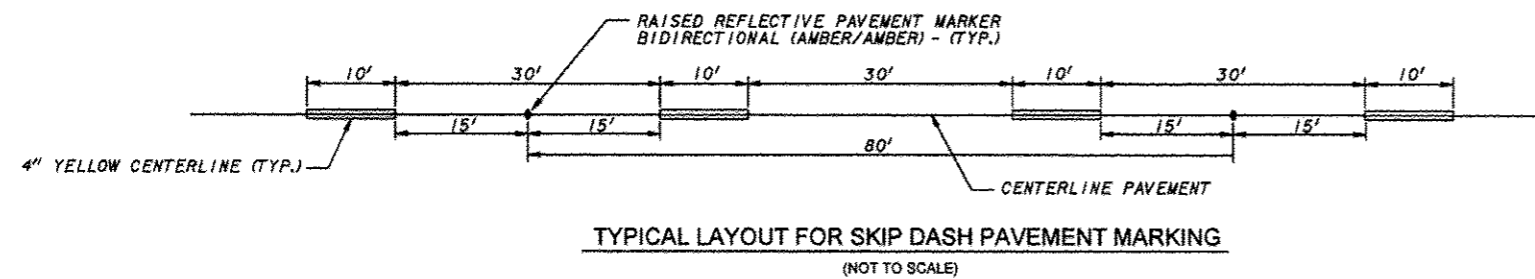
APPROVED: *Grant C. Guthman* 2-10-16  
GRANT C. GUTHMAN - JACKSON COUNTY ENGINEER

APPROVED: *Dennis Hillebrenner* 2-11-16  
DENNIS HILLEBRENNER - DISTRICT ENGINEER OF LOCAL ROADS & STREETS

APPROVED: *Ted R. Beff* 2-11-16  
TED R. BEFF, P.E.  
DEPUTY DIRECTOR OF HIGHWAYS  
REGION FIVE ENGINEER

SCALE AS SHOWN	PLANS PREPARED BY J. T. BLANKINSHIP, INC. CONSULTING ENGINEERS 401 S. 17TH STREET MURPHYSBORO, ILLINOIS	BOOK 471-Q FILE NO. E-9935 SHEET NO. 1 OF 13
----------------	---	--

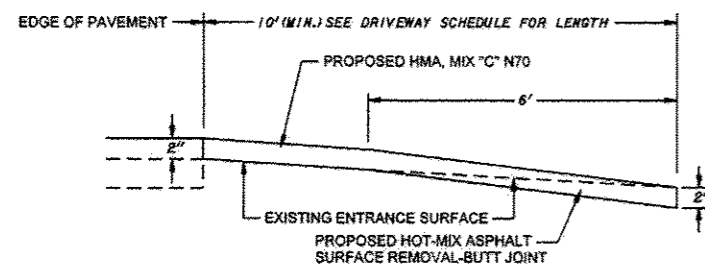
ROUTE	SECTION	COUNTY	TOWNSHIP	TOTAL SHEETS	SHEET NUMBER
FASBPB PA/MSB01	12-00169-00-RS	JACKSON	SOMERSET	13	2
JOB NO. C-89-S11-13			PROJECT NO. RS-1018(117)		
AVA ROAD			CONTRACT NO. 89583		



### SUMMARY OF QUANTITIES

CODE PAY ITEM NO.	ITEM NO.	DESCRIPTION	UNIT	AS-BID QUANTITY	AS-BUILT QUANTITY
40600290	1	BITUMINOUS MATERIALS (TACK COAT)	POUND	15,000	
40600982	2	HOT-MIX ASPHALT SURFACE REMOVAL - BUTT JOINT	SQ. YD.	2308.6	
40603315	3	HOT-MIX ASPHALT SURFACE COURSE, MIX "C", N70	TON	3,000	
48203100	4	HOT-MIX ASPHALT SHOULDERS	TON	2,000	
67100100	5	MOBILIZATION	L. SUM.	1	
70300100	6	SHORT TERM PAVEMENT MARKING	FOOT	948	
Δ 78000100	7	THERMOPLASTIC PAVEMENT MARKING - LETTERS AND SYMBOLS	SQ. FT.	124.8	
Δ 78000200	8	THERMOPLASTIC PAVEMENT MARKING - LINE 4"	FOOT	4,961	
Δ 78000600	9	THERMOPLASTIC PAVEMENT MARKING - LINE 12"	FOOT	370	
Δ 78000650	10	THERMOPLASTIC PAVEMENT MARKING - LINE 24"	FOOT	78	
Δ 78001110	11	PAINT PAVEMENT MARKING - LINE 4"	FOOT	25,577	
Δ 78100100	12	RAISED REFLECTIVE PAVEMENT MARKER	EACH	197	
Δ 78300200	13	RAISED REFLECTIVE PAVEMENT MARKER REMOVAL	EACH	205	

### Δ SPECIALTY ITEMS

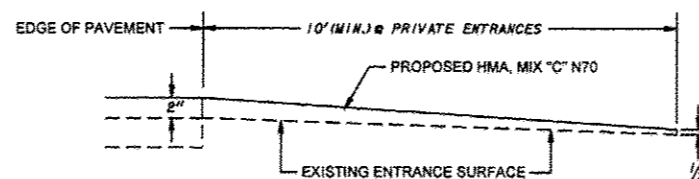


TOTAL ESTIMATED NO. OF ENTRANCES: 2 CONCRETE, 17 HMA

#### NOTES:

- 1) WIDTH IS VARIABLE AND SHALL INCLUDE RADII AS DIRECTED BY THE ENGINEER.
- 2) RESURFACE TO DISTANCES SHOWN OR AS DIRECTED BY THE ENGINEER.
- 3) COLD MILLING OF EXISTING SURFACES (HMA / CONCRETE) SHALL BE PAID FOR AT THE CONTRACT UNIT PRICE PER SQUARE YARD FOR HOT-MIX ASPHALT SURFACE REMOVAL-BUTT JOINT.
- 4) TACK COAT SHALL BE APPLIED IN ACCORDANCE WITH SECTION 406 OF THE STANDARD SPECIFICATIONS. THIS WILL BE PAID FOR AT THE CONTRACT UNIT PRICE FOR BITUMINOUS MATERIALS (TACK COAT).
- 5) HMA TO BE PAID FOR AT THE CONTRACT UNIT PRICE PER TON FOR HOT-MIX ASPHALT SHOULDERS.

**TYPICAL ENTRANCE DETAIL - BUTT JOINT**  
(HMA/CONCRETE SURFACES)  
(NOT TO SCALE)



TOTAL ESTIMATED NO. OF ENTRANCES = 41

#### NOTES:

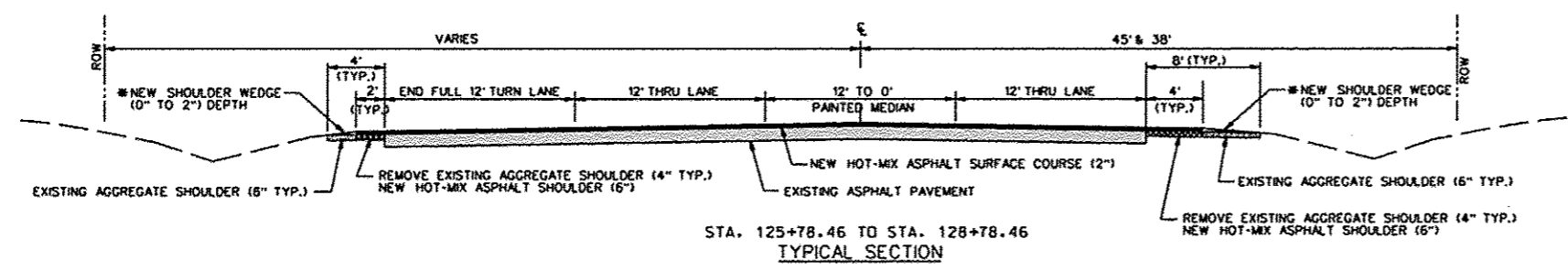
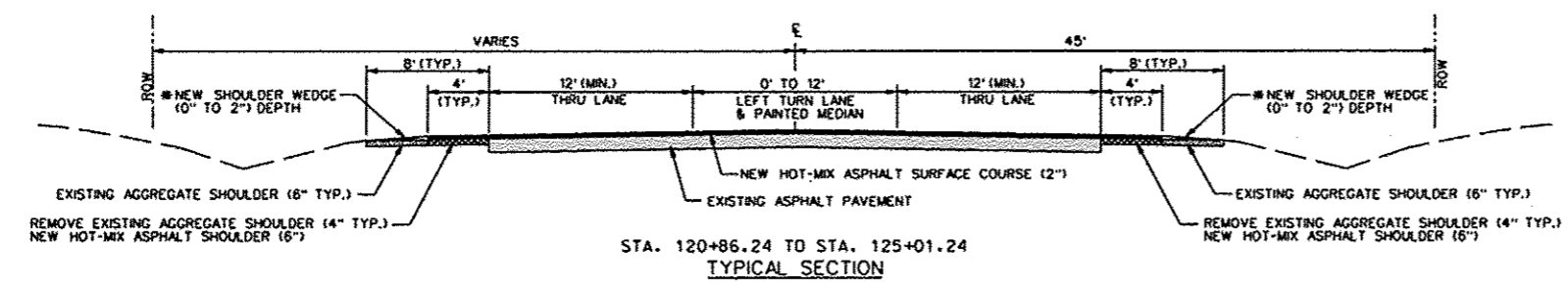
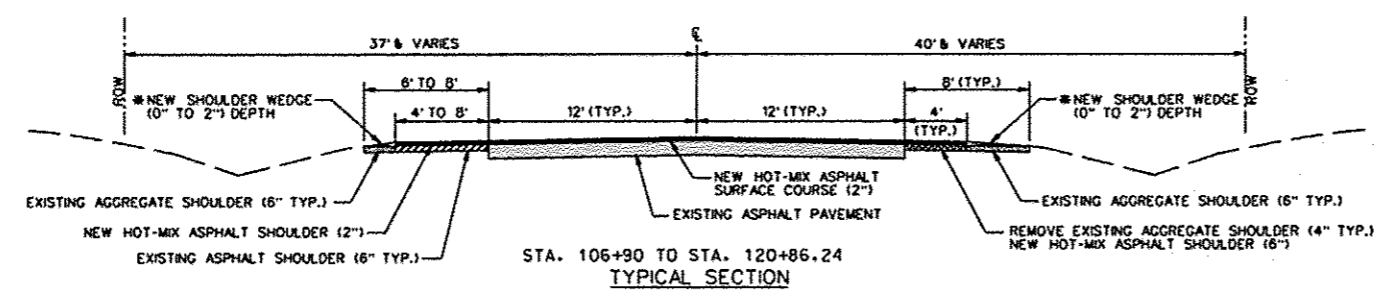
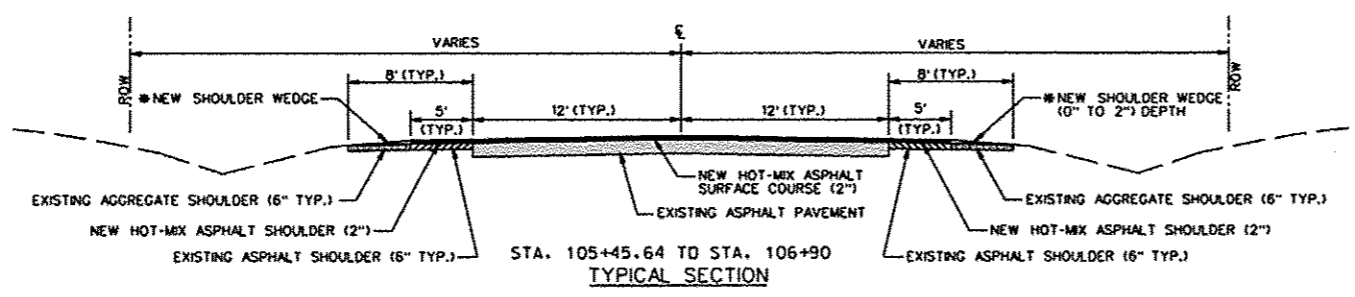
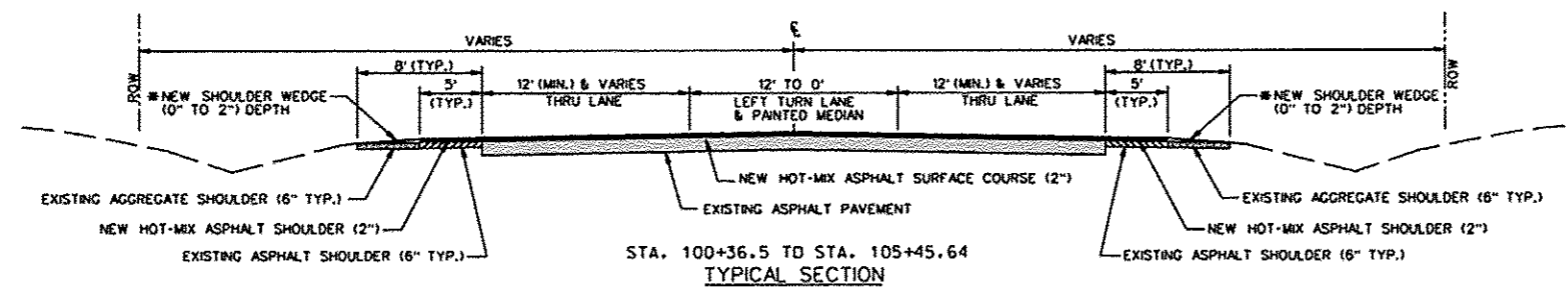
- 1) WIDTH IS VARIABLE AND SHALL INCLUDE RADII AS DIRECTED BY THE ENGINEER.
- 2) RESURFACE TO DISTANCES SHOWN OR AS DIRECTED BY THE ENGINEER.
- 3) PREPARATION OF THE EXISTING SURFACE AND ANY EXCAVATION FOR ENTRANCES SHALL BE IN ACCORDANCE WITH SECTION 358 OF THE STANDARD SPECIFICATIONS.
- 4) PRIME COAT SHALL BE APPLIED IN ACCORDANCE WITH SECTION 406 OF THE STANDARD SPECIFICATIONS. THIS WILL BE PAID FOR AT THE CONTRACT UNIT PRICE FOR BITUMINOUS MATERIALS (TACK COAT).
- 5) HMA TO BE PAID FOR AT THE CONTRACT UNIT PRICE PER TON FOR HOT-MIX ASPHALT SHOULDERS.

**TYPICAL ENTRANCE DETAIL - OVERLAY EXISTING SURFACE**  
(NOT TO SCALE)

### STRUCTURAL DESIGN DATA - AVA ROAD

STRUCTURAL DESIGN TRAFFIC:	YEAR 2026
PV =	3.645
SU =	115
MJ =	40
ROAD/STREET CLASSIFICATION:	CLASS II
PERCENT OF STRUCTURAL DESIGN TRAFFIC IN DESIGN LANE:	
P =	50%
S =	50%
M =	50%
TRAFFIC FACTOR: (TF) =	0.288
AC TYPE =	
PG GRADE: Surface =	64-22
SUBGRADE SUPPORT RATING: IBR =	2.9
MATERIAL COEFFICIENT:	
HMA SURFACE COURSE =	0.40
POSTED SPEED LIMIT =	45 MPH
20 MPH SCHOOL ZONE @	MCELVAIN ROAD

ROUTE	SECTION	COUNTY	TOWNSHIP	TOTAL SHEETS	SHEET NUMBER
FA5191B FAU9680	12-00169-00-RS	JACKSON	SOMERSET	13	3
JOB NO. C-99-311-13			PROJECT NO. RS-1916(117)		
AVA ROAD			CONTRACT NO. 99563		



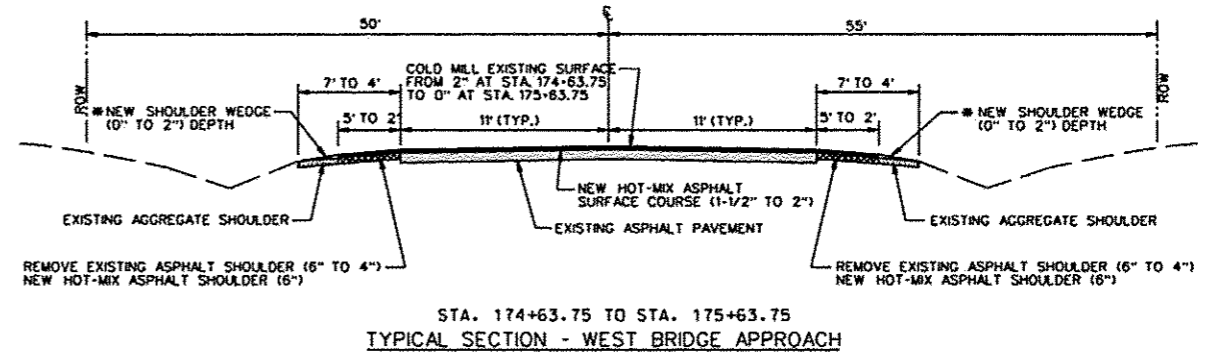
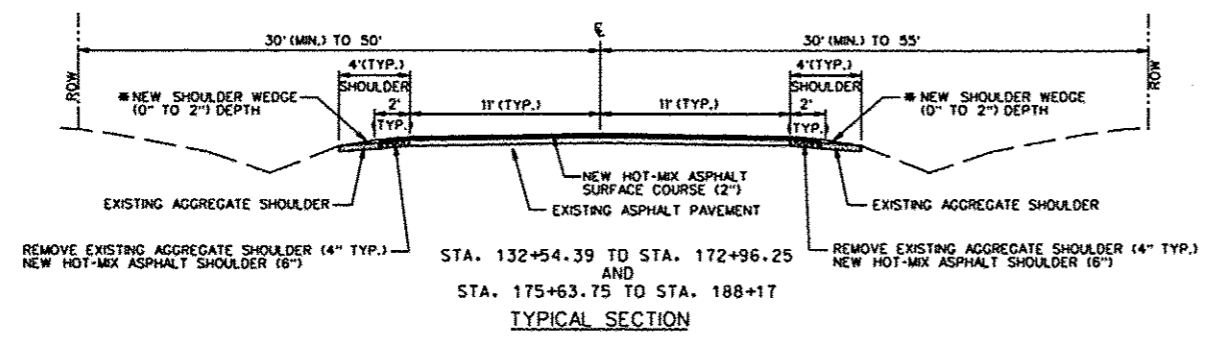
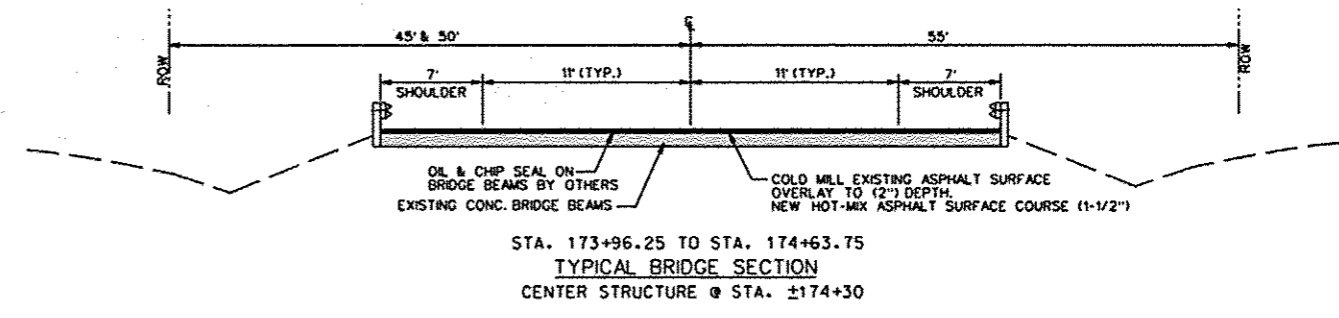
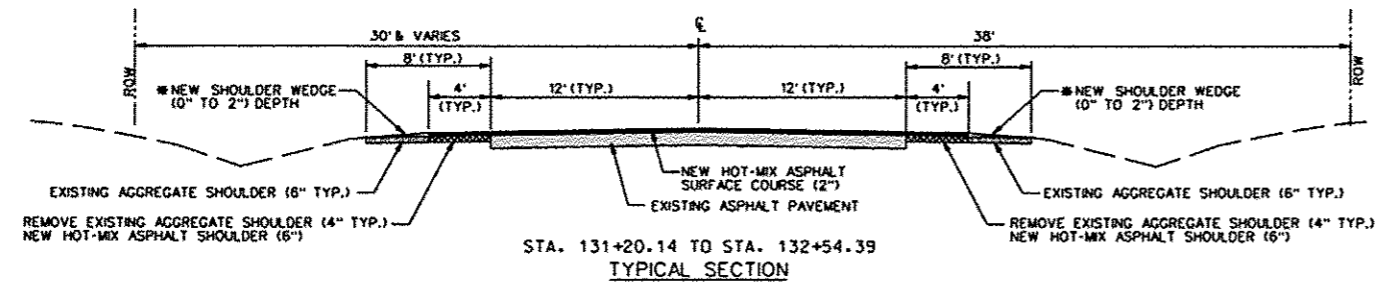
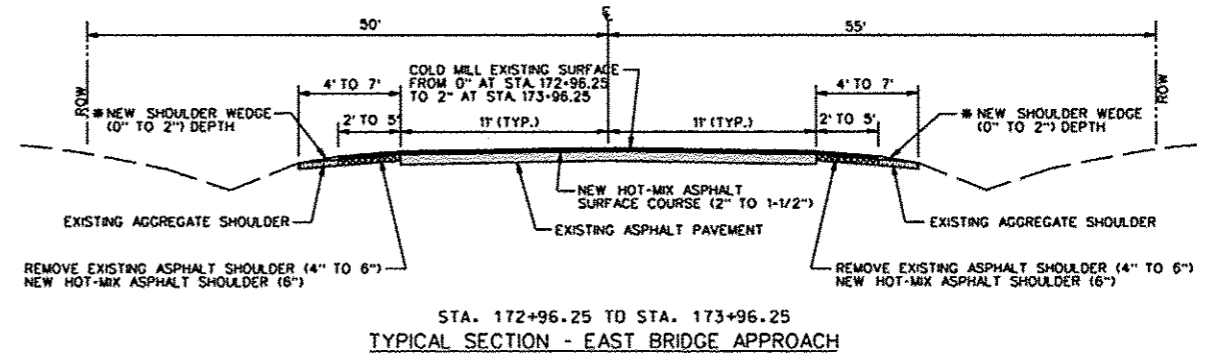
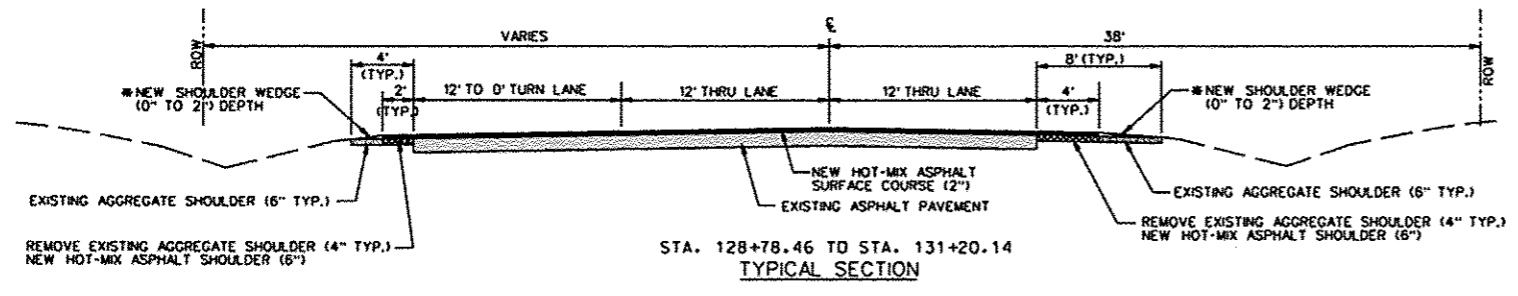
MIXTURE REQUIREMENTS	
LOCATIONS:	AVA ROAD
MIXTURE USES:	HOT-MIX ASPHALT SURFACE COURSE MIX "C", N70
	HMA SHOULDER (TOP LIFT), P.E., S.R., MAIL BOX TURN-OUT
AC/PG:	PG 64-22
RAP% (MAX):	10%
DESIGN AIR VOIDS:	4% @ Ndes 70
MIXTURE COMPOSITION (GRADATION COMPOSITION):	IL 9.5 or IL 12.5
FRICITION AGGREGATE:	MIXTURE C
MIXTURE WEIGHTS:	112 LBS / SY / INCH THICKNESS

MIXTURE REQUIREMENTS	
LOCATIONS:	AVA ROAD
MIXTURE USES:	HOT-MIX ASPHALT SHOULDERS (BOTTOM LIFT)
AC/PG:	PG 64-22
RAP% (MAX):	25%
DESIGN AIR VOIDS:	4% @ Ndes 70
MIXTURE COMPOSITION (GRADATION COMPOSITION):	IL 19.0
FRICITION AGGREGATE:	NONE
MIXTURE WEIGHTS:	112 LBS / SY / INCH THICKNESS

NOTE: THE TOP 2" OF ALL HMA SHOULDERS SHALL BE PLACED AT THE SAME TIME THAT THE DRIVE / TURN LANES ARE CONSTRUCTED, BUT SHALL BE PAID FOR AS HMA SHOULDERS.

\* - NEW SHOULDER WEDGE TO BE CONSTRUCTED FROM MATERIALS REMOVED FOR THE CONSTRUCTION OF THE NEW SHOULDERS.

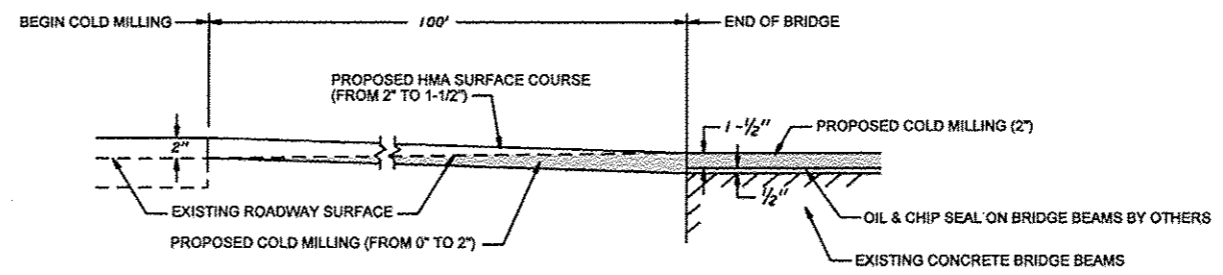
ROUTE	SECTION	COUNTY	TOWNSHIP	TOTAL SHEETS	SHEET NUMBER
FAS1918 FA19880	12-0089-00-RS	JACKSON	SOMERSET	14	4
JOB NO. C-99-311-13			PROJECT NO. RS-1918(117)		
AVA ROAD			CONTRACT NO. 99563		



NOTE: FOR AREA BETWEEN STA. 172+96.25 AND STA. 175+63.75 SEE BRIDGE APPROACH AND BRIDGE SECTIONS ON THIS SHEET.

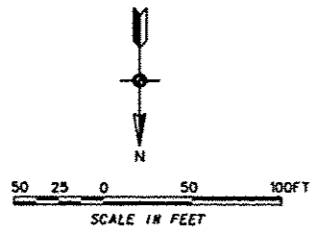
NOTE: THE TOP 2" OF ALL HMA SHOULDERS SHALL BE PLACED AT THE SAME TIME THAT THE DRIVE / TURN LANES ARE CONSTRUCTED, BUT SHALL BE PAID FOR AS HMA SHOULDERS.

\* - NEW SHOULDER WEDGE TO BE CONSTRUCTED FROM MATERIALS REMOVED FOR THE CONSTRUCTION OF THE NEW SHOULDERS.



TYPICAL BRIDGE APPROACH PROFILE

ROUTE	SECTION	COUNTY	TOWNSHIP	TOTAL SHEETS	SHEET NUMBER
FAS 1918 FA 99580	12-0069-00-RS	JACKSON	SOMERSET	13	5
JOB NO. C-99-311-13			PROJECT NO. RS-1918(117)		
AVA ROAD			CONTRACT NO. 99563		



**LEGEND**

- PROPOSED HOT-MIX ASPHALT SIDE ROAD / DRIVEWAY OVERLAY
- PROPOSED COLD MILLING

**NOTES:**

1. SEE DRIVEWAY SCHEDULE ON SHEET 9 FOR DRIVEWAY PAVEMENT QUANTITIES.
2. SEE TYPICAL ENTRANCE DETAILS ON SHEET 2.

**CURVE DATA - AVA BLACKTOP (FAS 1918)**

$\Delta = 55^\circ 12' 58''$     PC = 102+92.76  
 T = 315.87            PI = 106+08.63  
 R = 604.00            PT = 108+74.83  
 L = 582.07

PROPOSED COLD MILLING  
 FROM 0" @ BUTT JOINT STA. 100+36.5  
 TO 2" @ STA. 101+00 - 586 SQ. YDS.

PROPOSED IMPROVEMENT  
BEGINS @ STA. 100+36.5

CONSTRUCT BUTT JOINT

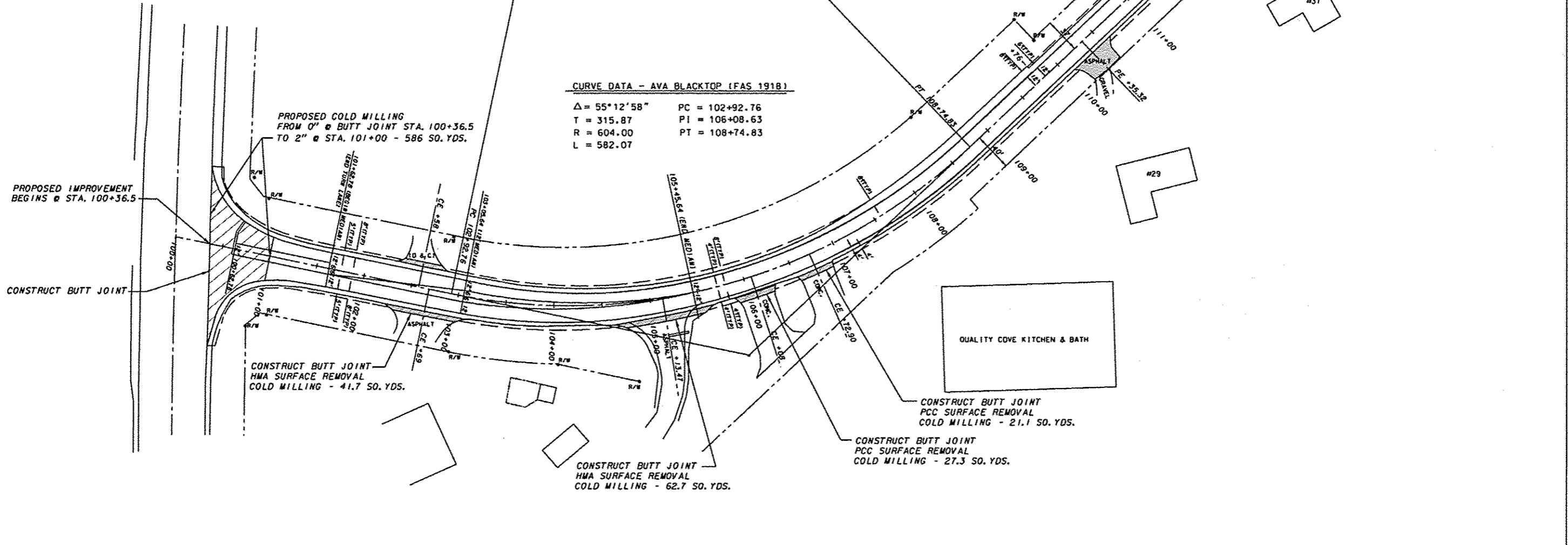
CONSTRUCT BUTT JOINT  
 HMA SURFACE REMOVAL  
 COLD MILLING - 41.7 SQ. YDS.

CONSTRUCT BUTT JOINT  
 HMA SURFACE REMOVAL  
 COLD MILLING - 62.7 SQ. YDS.

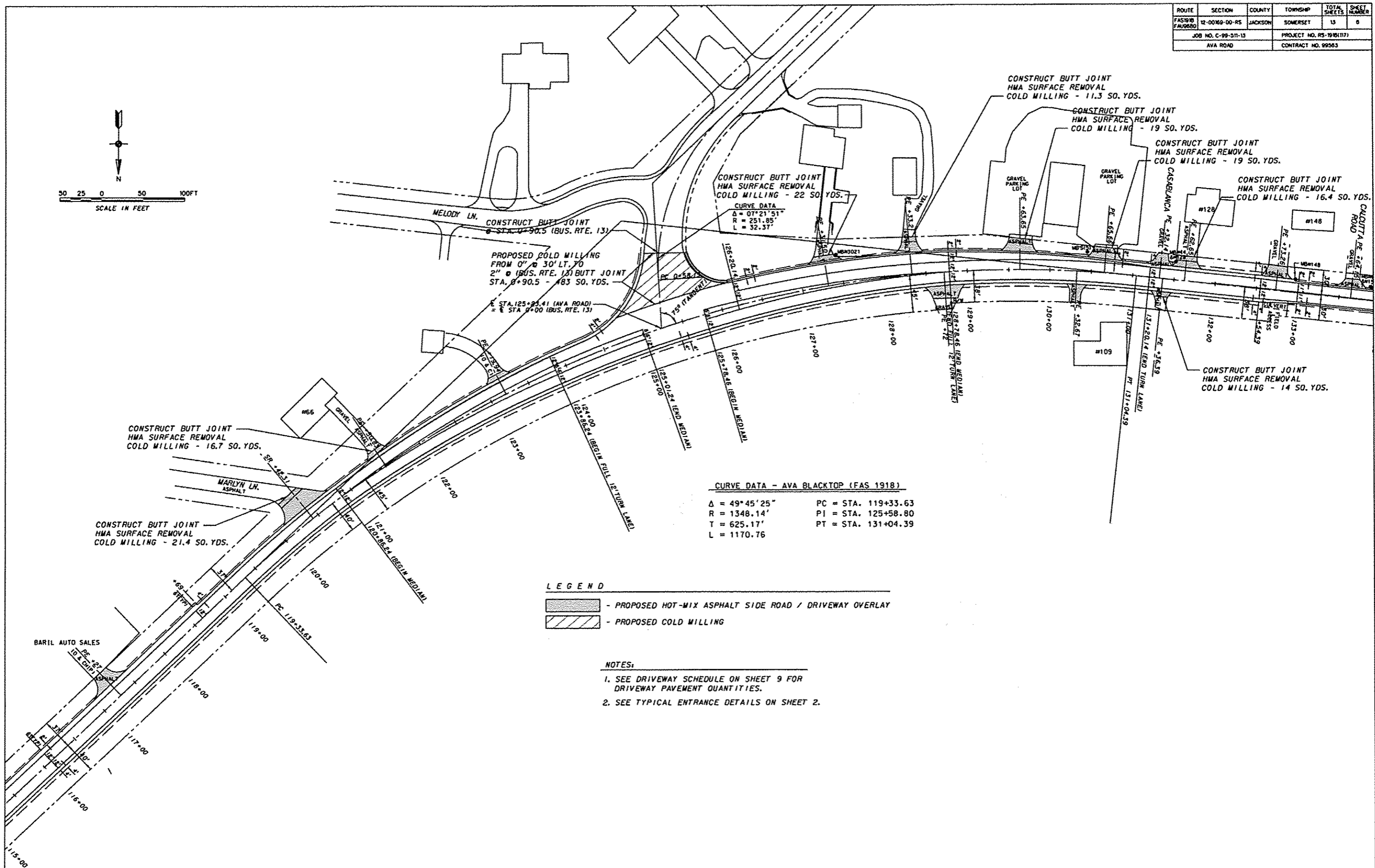
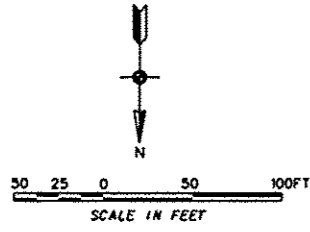
CONSTRUCT BUTT JOINT  
 PCC SURFACE REMOVAL  
 COLD MILLING - 21.1 SQ. YDS.

CONSTRUCT BUTT JOINT  
 PCC SURFACE REMOVAL  
 COLD MILLING - 27.3 SQ. YDS.

QUALITY COVE KITCHEN & BATH



ROUTE	SECTION	COUNTY	TOWNSHIP	TOTAL SHEETS	SHEET NUMBER
FAS1918 FA09600	12-0009-00-R5	JACKSON	SOMERSET	13	6
JOB NO. C-99-311-13				PROJECT NO. RS-19161171	
AVA ROAD				CONTRACT NO. 99563	



CURVE DATA - AVA BLACKTOP (FAS 1918)

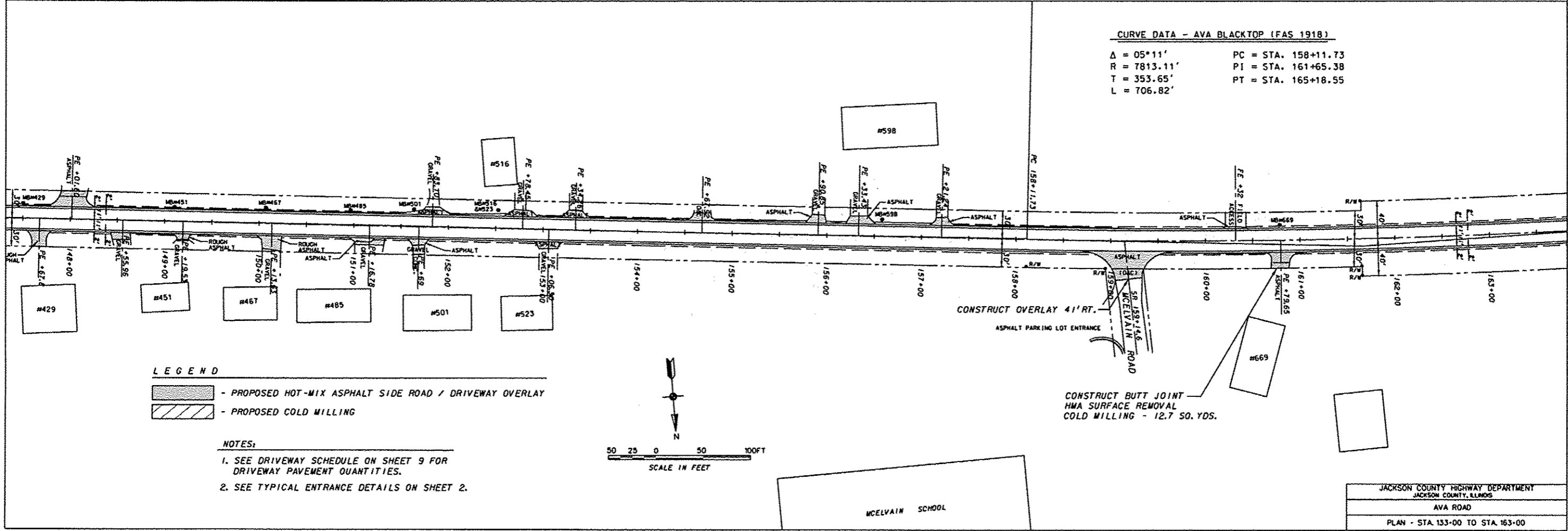
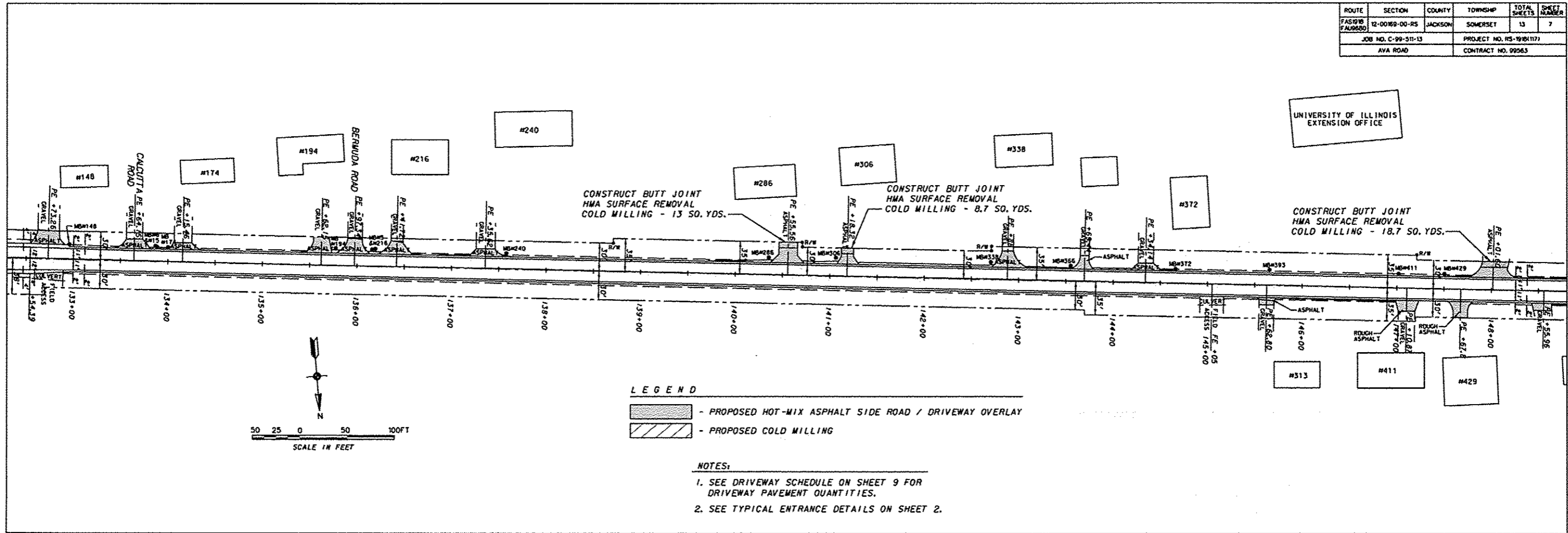
$\Delta = 49^{\circ}45'25''$	PC = STA. 119+33.63
R = 1348.14'	PI = STA. 125+58.80
T = 625.17'	PT = STA. 131+04.39
L = 1170.76	

LEGEND

	- PROPOSED HOT-MIX ASPHALT SIDE ROAD / DRIVEWAY OVERLAY
	- PROPOSED COLD MILLING

- NOTES:
1. SEE DRIVEWAY SCHEDULE ON SHEET 9 FOR DRIVEWAY PAVEMENT QUANTITIES.
  2. SEE TYPICAL ENTRANCE DETAILS ON SHEET 2.

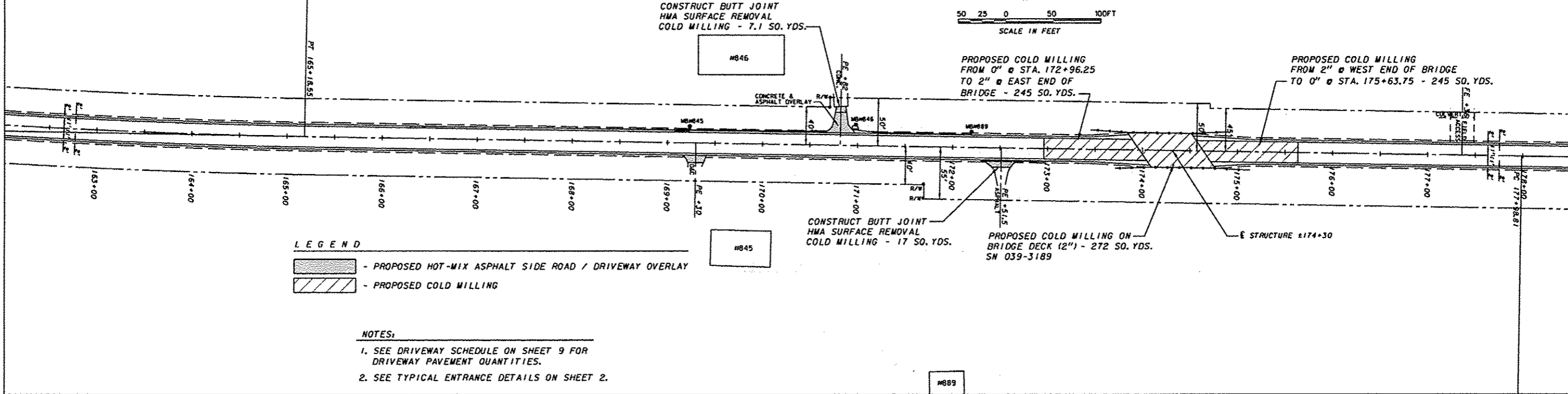
ROUTE	SECTION	COUNTY	TOWNSHIP	TOTAL SHEETS	SHEET NUMBER
FAS 1918 FA191800	12-00169-00-25	JACKSON	SOMERSET	13	7
JOB NO. C-99-311-13			PROJECT NO. HS-1918(117)		
AVA ROAD			CONTRACT NO. 92563		



ROUTE	SECTION	COUNTY	TOWNSHIP	TOTAL SHEETS	SHEET NUMBER
FAS 1918 FAUG 2000	12-00MS-00-RS	JACKSON	SOMERSET	13	8
JOB NO. C-99-311-13			PROJECT NO. RS-1918(117)		
AVA ROAD			CONTRACT NO. 99563		

**CURVE DATA - AVA BLACKTOP (FAS 1918)**

Δ = 05°11'      PC = STA. 158+11.73  
R = 7813.11'    PI = STA. 161+65.38  
T = 353.65'     PT = STA. 165+18.55  
L = 706.82'

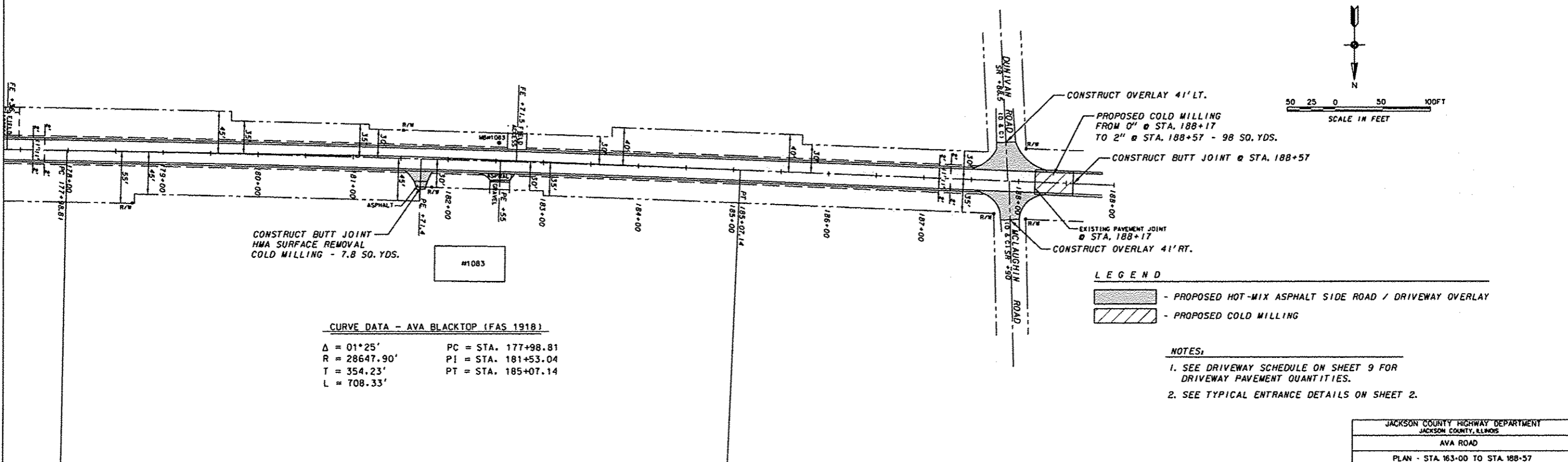


**LEGEND**

- PROPOSED HOT-MIX ASPHALT SIDE ROAD / DRIVEWAY OVERLAY
- PROPOSED COLD MILLING

**NOTES:**

1. SEE DRIVEWAY SCHEDULE ON SHEET 9 FOR DRIVEWAY PAVEMENT QUANTITIES.
2. SEE TYPICAL ENTRANCE DETAILS ON SHEET 2.



**CURVE DATA - AVA BLACKTOP (FAS 1918)**

Δ = 01°25'      PC = STA. 177+98.81  
R = 28647.90'    PI = STA. 181+53.04  
T = 354.23'     PT = STA. 185+07.14  
L = 708.33'

**LEGEND**

- PROPOSED HOT-MIX ASPHALT SIDE ROAD / DRIVEWAY OVERLAY
- PROPOSED COLD MILLING

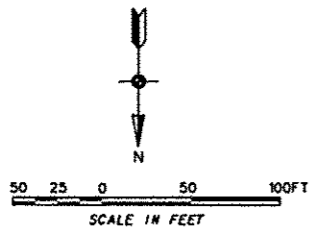
**NOTES:**

1. SEE DRIVEWAY SCHEDULE ON SHEET 9 FOR DRIVEWAY PAVEMENT QUANTITIES.
2. SEE TYPICAL ENTRANCE DETAILS ON SHEET 2.





ROUTE	SECTION	COUNTY	TOWNSHIP	TOTAL SHEETS	SHEET NUMBER
FAS1918 FAL0600	12-00199-00-RS	JACKSON	SOMERSET	13	10
JOB NO. C-99-311-13			PROJECT NO. RS-19181171		
AVA ROAD			CONTRACT NO. 99583		



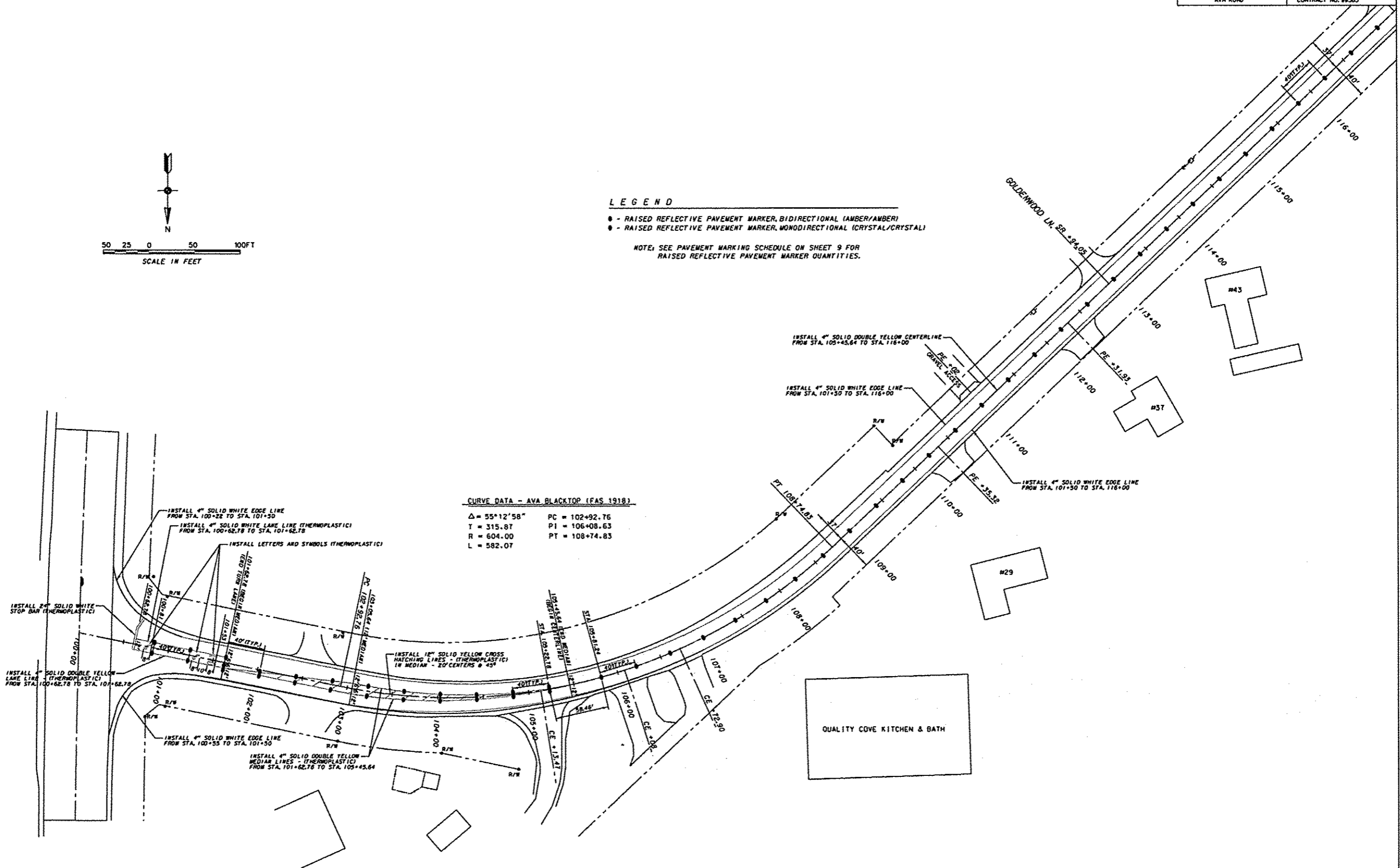
**LEGEND**

- - RAISED REFLECTIVE PAVEMENT MARKER, BIDIRECTIONAL (AMBER/AMBER)
- - RAISED REFLECTIVE PAVEMENT MARKER, MONODIRECTIONAL (CRYSTAL/CRYSTAL)

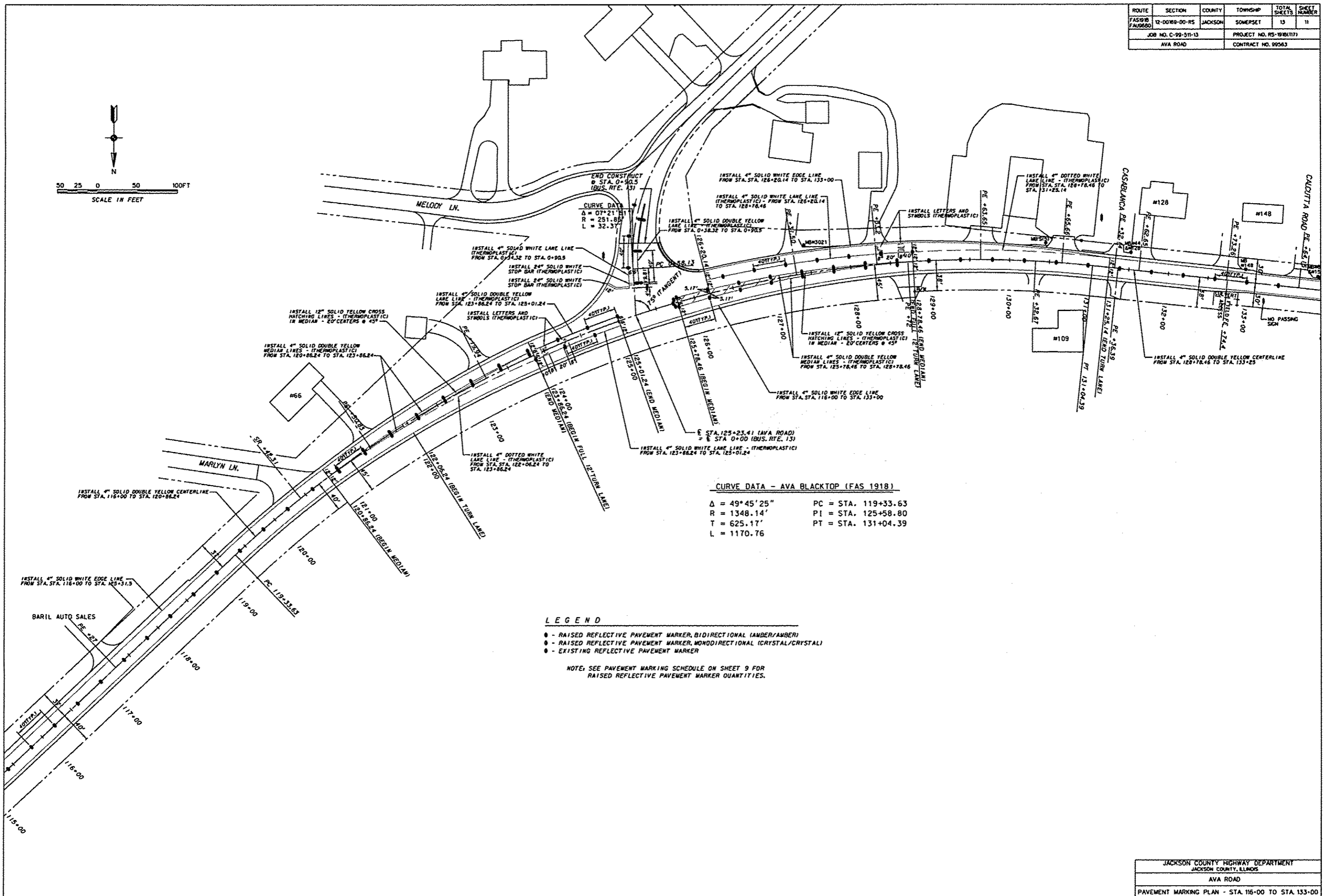
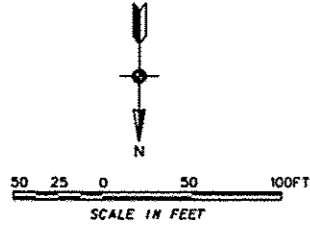
NOTE: SEE PAVEMENT MARKING SCHEDULE ON SHEET 9 FOR RAISED REFLECTIVE PAVEMENT MARKER QUANTITIES.

**CURVE DATA - AVA BLACKTOP (FAS 1918)**

$\Delta = 55^{\circ}12'58''$     PC = 102+92.76  
 T = 315.87        PI = 106+08.63  
 R = 604.00        PT = 108+74.83  
 L = 582.07



ROUTE	SECTION	COUNTY	TOWNSHIP	TOTAL SHEETS	SHEET NUMBER
FAS1918 FAU0660	12-0019-00-RS	JACKSON	SOMERSET	13	11
JOB NO. C-99-011-13			PROJECT NO. RS-1918(117)		
AVA ROAD			CONTRACT NO. 99563		



**CURVE DATA - AVA BLACKTOP (FAS 1918)**

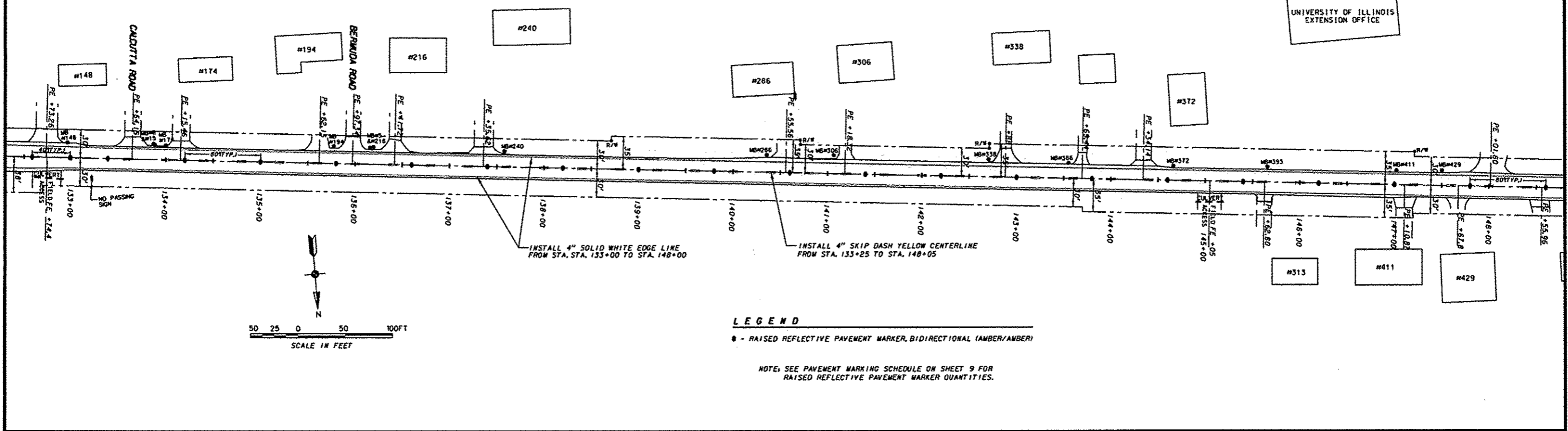
$\Delta = 49^\circ 45' 25''$       PC = STA. 119+33.63  
 $R = 1348.14'$           PI = STA. 125+58.80  
 $T = 625.17'$             PT = STA. 131+04.39  
 $L = 1170.76$

**LEGEND**

- - RAISED REFLECTIVE PAVEMENT MARKER, BIDIRECTIONAL (AMBER/AMBER)
- - RAISED REFLECTIVE PAVEMENT MARKER, MONODIRECTIONAL (CRYSTAL/CRYSTAL)
- - EXISTING REFLECTIVE PAVEMENT MARKER

NOTE: SEE PAVEMENT MARKING SCHEDULE ON SHEET 9 FOR RAISED REFLECTIVE PAVEMENT MARKER QUANTITIES.

ROUTE	SECTION	COUNTY	TOWNSHIP	TOTAL SHEETS	SHEET NUMBER
FAS1918 FAU9800	12-00169-00-RS	JACKSON	SOMERSET	13	12
JOB NO. C-99-311-13			PROJECT NO. RS-1918(117)		
AVA ROAD			CONTRACT NO. 99563		



**LEGEND**

● - RAISED REFLECTIVE PAVEMENT MARKER, BIDIRECTIONAL (AMBER/AMBER)

NOTE: SEE PAVEMENT MARKING SCHEDULE ON SHEET 9 FOR RAISED REFLECTIVE PAVEMENT MARKER QUANTITIES.

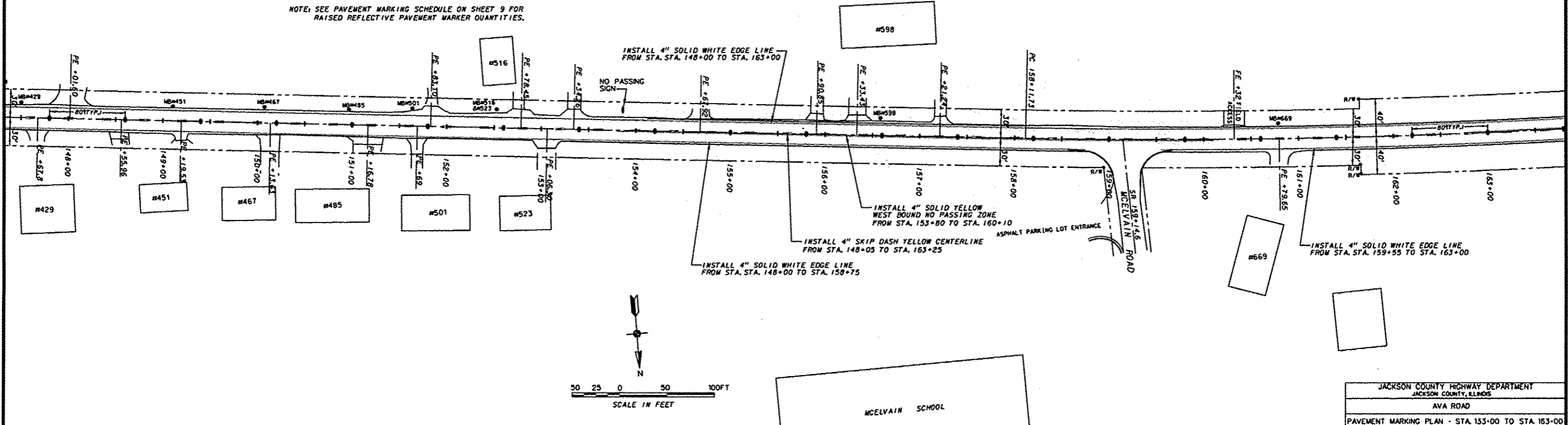
**CURVE DATA - AVA BLACKTOP (FAS 1918)**

Δ = 05°11'      PC = STA. 158+11.73  
 R = 7813.11'    PI = STA. 161+65.38  
 T = 353.65'      PT = STA. 165+18.55  
 L = 706.82'

**LEGEND**

● - RAISED REFLECTIVE PAVEMENT MARKER, BIDIRECTIONAL (AMBER/AMBER)

NOTE: SEE PAVEMENT MARKING SCHEDULE ON SHEET 9 FOR RAISED REFLECTIVE PAVEMENT MARKER QUANTITIES.

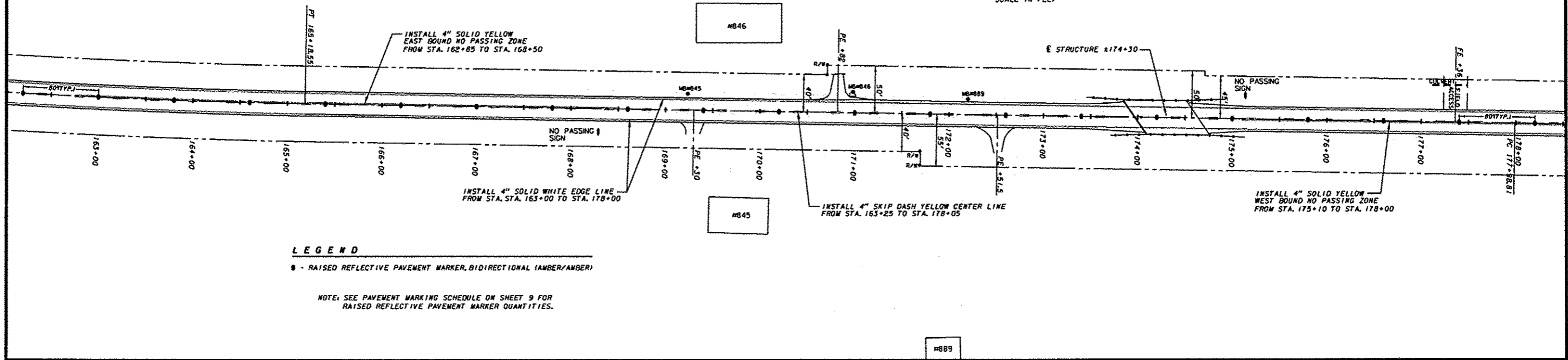
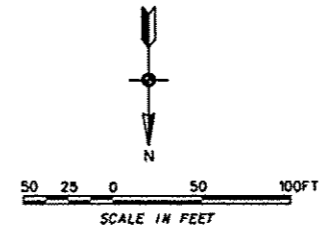


JACKSON COUNTY HIGHWAY DEPARTMENT JACKSON COUNTY, ILLINOIS
AVA ROAD
PAVEMENT MARKING PLAN - STA. 133+00 TO STA. 163+00

ROUTE	SECTION	COUNTY	TOWNSHIP	TOTAL SHEETS	SHEET NUMBER
FAS1918 FAU9980	12-00189-00-RS	JACKSON	SOMERSET	13	13
JOB NO. C-99-311-13			PROJECT NO. RS-1918(117)		
AVA ROAD			CONTRACT NO. 99563		

**CURVE DATA - AVA BLACKTOP (FAS 1918)**

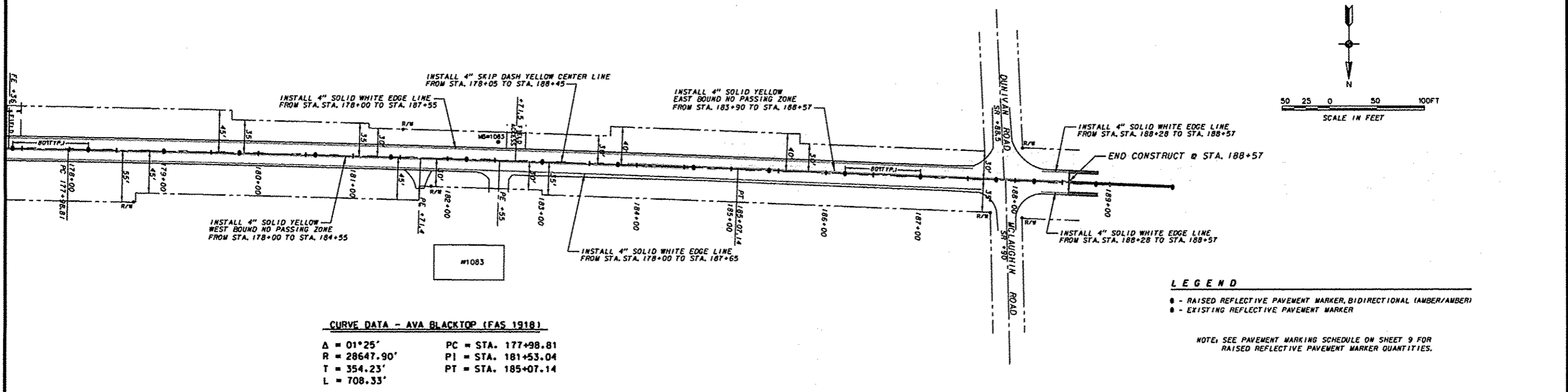
$\Delta = 05^{\circ}11'$       PC = STA. 158+11.73  
 $R = 7813.11'$       PI = STA. 161+65.38  
 $T = 353.65'$       PT = STA. 165+18.55  
 $L = 706.82'$



**LEGEND**

● - RAISED REFLECTIVE PAVEMENT MARKER, BIDIRECTIONAL (AMBER/AMBER)

NOTE: SEE PAVEMENT MARKING SCHEDULE ON SHEET 9 FOR RAISED REFLECTIVE PAVEMENT MARKER QUANTITIES.



**LEGEND**

● - RAISED REFLECTIVE PAVEMENT MARKER, BIDIRECTIONAL (AMBER/AMBER)  
 ● - EXISTING REFLECTIVE PAVEMENT MARKER

NOTE: SEE PAVEMENT MARKING SCHEDULE ON SHEET 9 FOR RAISED REFLECTIVE PAVEMENT MARKER QUANTITIES.

**CURVE DATA - AVA BLACKTOP (FAS 1918)**

$\Delta = 01^{\circ}25'$       PC = STA. 177+98.81  
 $R = 28647.90'$       PI = STA. 181+53.04  
 $T = 354.23'$       PT = STA. 185+07.14  
 $L = 708.33'$