

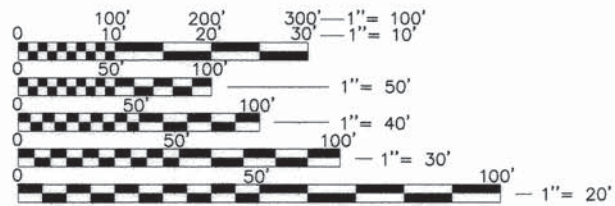
STATE OF ILLINOIS
DEPARTMENT OF TRANSPORTATION
DIVISION OF HIGHWAYS
**PLANS FOR PROPOSED
FEDERAL AID HIGHWAY**

F.A.U. RTE.	SECTION	COUNTY	TOTAL SHEETS	SHEET NO.
2774	11-00033-00-SW	LAKE	21	1
		ILLINOIS	CONTRACT NO. 61B74	

**FAU 2774 (SHERIDAN ROAD)
FAU 2774 (SHERIDAN ROAD CUTOFF)
AT EAST SHERIDAN ROAD
FROM SHERIDAN ROAD TO W. SCRANTON AVE
SECTION: 11-00033-00-SW
PROJECT: TE-00D1 (882)
MULTI-USE PATH
VILLAGE OF LAKE BLUFF
LAKE COUNTY
C-91-643-11**

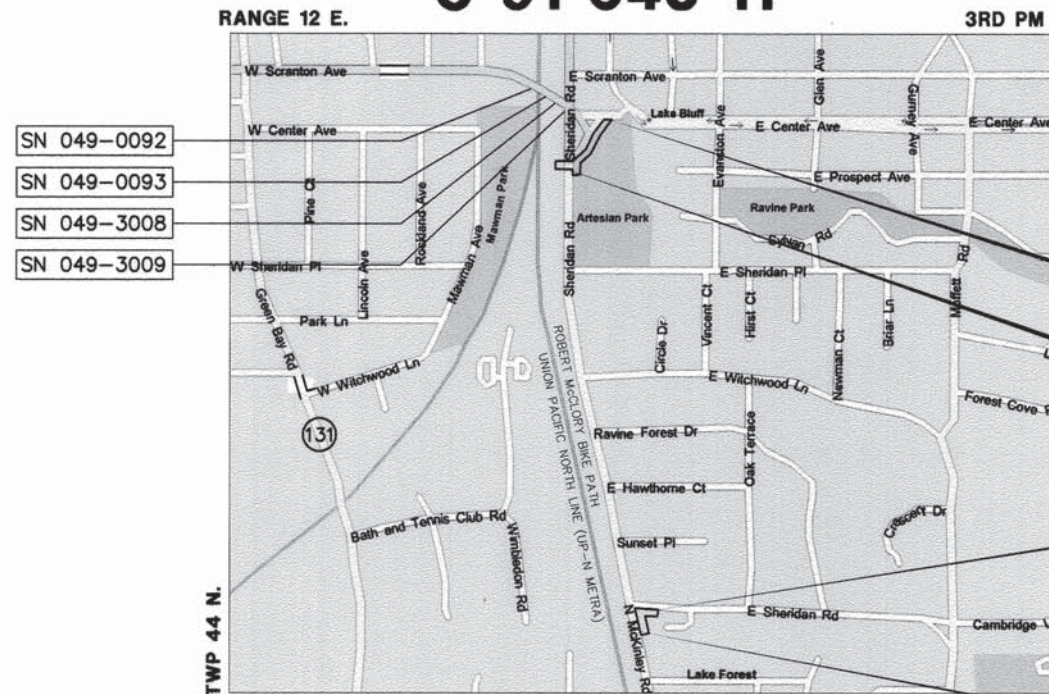
FOR INDEX OF SHEETS, SEE SHEET NO. 2

TRAFFIC DATA
SHERIDAN ROAD
ADT = 6650
SPEED LIMIT = 40 MPH



FULL SIZE PLANS HAVE BEEN PREPARED USING STANDARD ENGINEERING SCALES. REDUCED SIZED PLANS WILL NOT CONFORM TO STANDARD SCALES. IN MAKING MEASUREMENTS ON REDUCED PLANS, THE ABOVE SCALES MAY BE USED.

J.U.L.I.E.
JOINT UTILITY LOCATION INFORMATION FOR EXCAVATION
1-800-892-0123 OR 811



**END IMPROVEMENTS
STA. 6+90**

**BEGIN IMPROVEMENTS
STA. 1+00**

**END IMPROVEMENTS
STA. 1+00**

**BEGIN IMPROVEMENTS
STA. 0+00**



STATE OF ILLINOIS
DEPARTMENT OF TRANSPORTATION
DIVISION OF HIGHWAYS

APPROVED: August 11 2015

[Signature]
VILLAGE OF LAKE BLUFF

PASSED: August 25 2015

[Signature]
DISTRICT ONE ENGINEER OF LOCAL ROADS AND STREETS

RELEASING FOR BID
BASED ON LIMITED
REVIEW: August 25 2015

[Signature]
DEPUTY DIRECTOR OF HIGHWAYS, REGION ONE ENGINEER

SIGNED: Kevin L. Belgrave
KEVIN L. BELGRAVE, EXP. 11/30/2017

DATE: 1/7/2016



PRINTED BY THE AUTHORITY
OF THE STATE OF ILLINOIS

FEDERAL AID PROGRAM ENGINEER: FAWAD AQUEEL, P.E. (847) 705-4021 SCHAUMBURG, IL

INDEX OF SHEETS

1. COVER SHEET
2. INDEX OF SHEETS, GENERAL NOTES, STATE STANDARDS, AND DISTRICT STANDARDS
3. SUMMARY OF QUANTITIES
4. TYPICAL SECTIONS
- 5.-6. ALIGNMENT AND TIES
- 7.-8. EXISTING CONDITIONS AND DEMOLITION PLAN
- 9.-10. PLAN AND PROFILE
- 11.-12. SOIL EROSION AND SEDIMENT CONTROL PLAN
13. SOIL EROSION AND SEDIMENT CONTROL NOTES
14. SOIL EROSION AND SEDIMENT CONTROL DETAILS
- 15.-16. SIGNAGE AND PAVEMENT MARKING PLAN
- 17.-19. DISTRICT ONE STANDARDS
- 20.-21. CROSS SECTIONS

GENERAL NOTES

- A-1. ALL CONSTRUCTION SHALL BE PERFORMED ACCORDING TO THE ILLINOIS DEPARTMENT OF TRANSPORTATION "STANDARD SPECIFICATIONS FOR ROAD AND BRIDGE CONSTRUCTION" LATEST EDITION, THE "SUPPLEMENTAL SPECIFICATIONS AND RECURRING SPECIAL PROVISIONS" LATEST EDITION, THE "STANDARD SPECIFICATIONS FOR WATER AND SEWER MAIN CONSTRUCTION IN ILLINOIS" LATEST EDITION, THE DETAILS IN THESE PLANS, THE CONTRACT DOCUMENTS, ALL APPLICABLE REQUIREMENTS OF THE ILLINOIS DEPARTMENT OF TRANSPORTATION, THE IEPA AND ORDINANCES OF AUTHORITIES HAVING JURISDICTION AND ALL ADDENDA THERETO.
- A-2. PRIOR TO COMMENCEMENT OF CONSTRUCTION, THE CONTRACTOR SHALL VERIFY ALL DIMENSIONS AND CONDITIONS AFFECTING THEIR WORK WITH THE ACTUAL CONDITIONS AT THE JOB SITE. IN ADDITION, THE CONTRACTOR MUST VERIFY THE ENGINEER'S LINE AND GRADES. IF THERE ARE ANY DISCREPANCIES FROM WHAT IS SHOWN ON THE CONSTRUCTION PLANS, STANDARD SPECIFICATIONS AND/OR SPECIAL DETAILS, THE CONTRACTOR SHALL SECURE WRITTEN INSTRUCTION FROM THE ENGINEER PRIOR TO PROCEEDING WITH ANY PART OF THE WORK AFFECTED BY OMISSION OR DISCREPANCIES. FAILING TO SECURE SUCH INSTRUCTION, THE CONTRACTOR WILL BE CONSIDERED TO HAVE PROCEEDED AT HIS OWN RISK AND EXPENSE. IN THE EVENT OF ANY DOUBT OR QUESTION ARISING WITH RESPECT TO THE TRUE MEANING OF THE CONSTRUCTION PLANS OR SPECIFICATIONS, THE DECISION OF THE ENGINEER SHALL BE FINAL AND CONCLUSIVE.
- A-3. WHENEVER, DURING CONSTRUCTION OPERATIONS, ANY LOOSE MATERIAL IS DEPOSITED IN THE FLOW LINE OF GUTTERS, DRAINAGE STRUCTURES, DITCHES, ETC. SUCH THAT THE NATURAL FLOW LINE OF WATER IS OBSTRUCTED, THE LOOSE MATERIAL WILL BE REMOVED AT THE CLOSE OF EACH WORKING DAY. AT THE CONCLUSION OF CONSTRUCTION OPERATIONS, ALL DRAINAGE STRUCTURES AND FLOW LINES SHALL BE FREE FROM DIRT AND DEBRIS. THIS WORK SHALL BE CONSIDERED INCIDENTAL TO THE CONTRACT. THE CONTRACTOR'S FAILURE TO PROVIDE THE ABOVE WILL PRECLUDE ANY POSSIBLE ADDED COMPENSATION REQUESTED DUE TO DELAYS OR UNSUITABLE MATERIALS CREATED AS A RESULT THEREOF.
- A-4. THE CONTRACTOR SHALL BE RESPONSIBLE FOR THE INSTALLATION AND MAINTENANCE OF ADEQUATE SIGNS, TRAFFIC CONTROL DEVICES, AND WARNING DEVICES TO INFORM AND PROTECT THE PUBLIC DURING ALL PHASES OF CONSTRUCTION.
- A-5. DURING CONSTRUCTION OPERATIONS THE CONTRACTOR SHALL PROVIDE POSITIVE SITE DRAINAGE AT THE CONCLUSION OF EACH DAY. SITE DRAINAGE MAY BE ACHIEVED BY DITCHING, PUMPING OR ANY OTHER METHOD ACCEPTABLE TO THE ENGINEER.
- A-6. IT SHALL BE THE RESPONSIBILITY OF THE CONTRACTOR TO REMOVE FROM THE SITE ANY AND ALL MATERIALS AND DEBRIS WHICH RESULT FROM HIS CONSTRUCTION OPERATIONS AT NO ADDITIONAL EXPENSE.
- A-7. CONTRACTOR IS RESPONSIBLE FOR RETURNING ALL AREAS AFFECTED BY EQUIPMENT OR LABORERS TO EXISTING CONDITIONS. CONTRACTOR IS ALSO RESPONSIBLE FOR PROTECTING ALL NEW WORK UNTIL COMPLETION OF THIS CONTRACT.
- A-8. EASEMENTS FOR THE EXISTING UTILITIES, BOTH PUBLIC AND PRIVATE, AND UTILITIES WITHIN PUBLIC RIGHTS-OF-WAY ARE SHOWN ON THE PLANS ACCORDING TO AVAILABLE RECORDS. THE CONTRACTOR SHALL BE RESPONSIBLE FOR DETERMINING THE EXACT LOCATION IN THE FIELD OF THESE UTILITY LINES AND THEIR PROTECTION FROM DAMAGE DUE TO CONSTRUCTION OPERATIONS. IF EXISTING UTILITY LINES OF ANY NATURE ARE ENCOUNTERED WHICH CONFLICT IN LOCATION WITH NEW CONSTRUCTION, THE CONTRACTOR SHALL NOTIFY THE ENGINEER SO THAT THE CONFLICT MAY BE RESOLVED.
- A-9. THE CONTRACTOR SHALL CONTACT THE DISTRICT ONE TRAFFIC CONTROL SUPERVISOR AT (847) 705-4470 A MINIMUM OF 72 HOURS IN ADVANCE OF BEGINNING WORK.
- A-10. REPLACEMENT TREES SHALL BE FURNISHED AND INSTALLED AT LOCATIONS TO BE DESIGNATED BY THE VILLAGE ENGINEER.

PAVING AND GRADING NOTES

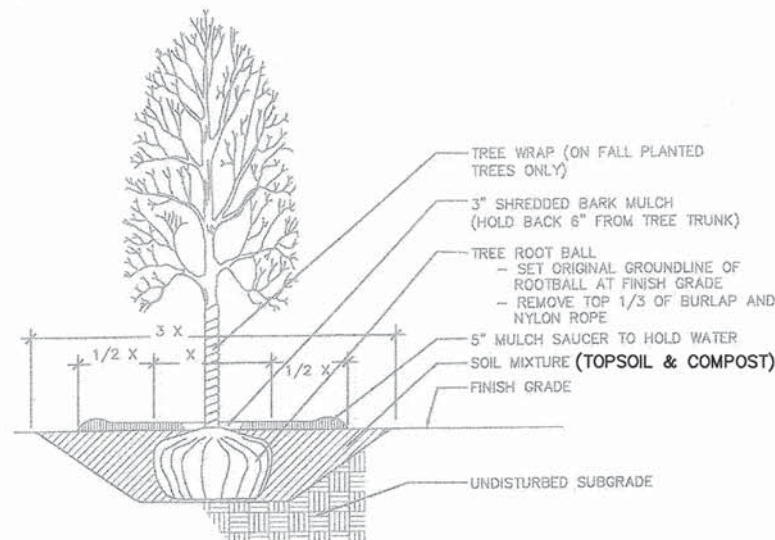
- B-1. ALL PAVEMENT DIMENSIONS ARE TO THE EDGE OF PAVEMENT, UNLESS OTHERWISE INDICATED.
- B-2. PAVING WORK SHALL INCLUDE FINAL SUB-GRADE SHAPING AND PREPARATION, FORMING, PLACEMENT OF BASE COURSE MATERIALS, AND SUBSEQUENT BINDER AND/OR SURFACE COURSES, FINISHING AND CURING OF CONCRETE, FINAL CLEAN-UP AND ALL RELATED WORK.
- B-3. ALL DISTURBED NON-PAVEMENT AREAS SHALL BE ROUGH GRADED. THE CONTRACTOR IS RESPONSIBLE FOR ALL EROSION PREVENTION AND REPAIR.
- B-4. 3/4" THICK PRE-MOLDED FIBER EXPANSION JOINTS WITH 3/4" x 18" PLAIN ROUND, STEEL DOWEL BARS SHALL BE INSTALLED IN ALL CURBS, 1/2" x 12" PLAIN ROUND STEEL DOWEL BARS IN SIDEWALK AT (60') SIXTY FOOT INTERVALS AND AT ALL P.C.'S, P.T.'S, CURB RETURNS. ALTERNATE ENDS OF THE DOWEL BARS SHALL BE GREASED AND FITTED WITH METAL EXPANSION TUBES. ALL EXPANSION JOINTS MUST BE FREE OF CONCRETE FOR FULL DEPTH. CONTRACTION JOINTS SHALL BE TOOLED AT 5' INTERVALS IN THE SIDEWALK. THE COST OF THESE JOINTS SHALL BE CONSIDERED AS INCIDENTAL TO THE COST OF THE CONTRACT. CONTRACTION JOINTS SHALL ALSO BE TOOLED DOWN THE CENTER OF ALL SIDEWALKS GREATER THAN 6' WIDE. (FIVE FOOT SPACING MAXIMUM).
- B-5. ALL PORTLAND CEMENT CONCRETE SHALL BE CURED AND PROTECTED IN ACCORDANCE WITH THE STANDARD SPECIFICATIONS. TWO COATS OF WHITE CURING COMPOUND SHALL BE APPLIED TO ALL CONCRETE WORK AS SOON AS THE FINISH IS COMPLETE, WITHIN ONE (1) HOUR OF FINAL STRIKING.
- B-6. UNLESS OTHERWISE NOTED, CONCRETE SIDEWALKS SHALL BE 5" THICK (8" THICK THROUGH DRIVEWAYS), SET ON THE 4" CA-6 CRUSHED STONE COMPACTED SUBBASE AND SHALL BE 1/4" ABOVE THE ADJACENT CURB.
- B-7. WHENEVER NEW CONCRETE ABUTS EXISTING CONCRETE, SET A 3/4" THICK PRE-MOLDED FIBER EXPANSION JOINT AND 3/4" IDOT STANDARD EXPANSION ANCHOR TIES IN ACCORDANCE WITH THE STANDARD SPECIFICATIONS. THIS INCLUDES CONCRETE POURED ADJACENT TO EXISTING SIDEWALKS, CURBS AND BUILDINGS. THE DOWEL BARS SHOULD BE 4" INTO EXISTING CONCRETE WITH 8" EXTENDING INTO NEW CONCRETE. THIS WORK SHALL BE INCLUDED IN THE CURB AND GUTTER PAY ITEMS.
- B-8. ALL SIGN POSTS SHALL CONFORM TO IDOT, COUNTY AND VILLAGE STANDARDS. EXISTING SIGNS THAT ARE IN CONFLICT WITH PROPOSED IMPROVEMENTS SHALL BE TEMPORARILY RELOCATED DURING CONSTRUCTION AS DIRECTED BY THE ENGINEER.
- B-9. WHEN REMOVING CURB, SIDEWALK OR PAVEMENT, SAW CUT SHALL BE FULL DEPTH. THE COST OF SAWCUTTING SHALL BE INCLUDED IN THE ITEM BEING REMOVED.

STATE STANDARDS

STANDARD NO	DESCRIPTION
280001-07	TEMPORARY EROSION CONTROL SYSTEM
424001-08	PERPENDICULAR CURB RAMPS FOR SIDEWALKS
424016-02	MID-BLOCK CURB RAMPS FOR SIDEWALKS
424026-01	ENTRANCE/ALLEY PEDESTRIAN CROSSINGS
606001-06	CONCRETE CURB TYPE B AND COMBINATION CONCRETE CURB AND GUTTER
701001-02	OFF-RD OPERATIONS, 2L, 2W, MORE THAN 15' (4.5 m) AWAY
701006-05	OFF-RD OPERATIONS, 2L, 2W, 15' (4.5m) TO 24" (600 mm) FROM PAVEMENT EDGE
701301-04	LANE CLOSURE, 2L, 2W, SHORT TIME OPERATIONS
701311-03	LANE CLOSURE, 2L, 2W, MOVING OPERATIONS - DAY ONLY
701501-06	URBAN LANE CLOSURE, 2L, 2W, UNDIVIDED
701801-06	SIDEWALK, CORNER OR CROSSWALK CLOSURE
701901-05	TRAFFIC CONTROL DEVICES
720011-01	METAL POSTS FOR SIGNS, MARKERS & DELINEATORS
729001-01	APPLICATIONS OF TYPES A & B METAL POSTS (FOR SIGNS & MARKERS)

DISTRICT ONE STANDARDS

STANDARD NO	DESCRIPTION
TC-10	TRAFFIC CONTROL AND PROTECTION FOR SIDE ROADS, INTERSECTIONS, AND DRIVEWAYS
TC-13	TYPICAL PAVEMENT MARKINGS
TC-22	ARTERIAL ROAD INFORMATION SIGN



TREE PLANTING PLAN

THE GENERAL CONTRACTOR SHALL BE RESPONSIBLE FOR HIRING AN ENVIRONMENTAL FIRM WITH AT LEAST FIVE (5) DOCUMENTED LEAKING UNDERGROUND STORAGE TANK (LUST) CLEANUPS OR THAT IS PREQUALIFIED IN HAZARDOUS WASTE BY THE DEPARTMENT TO REMEDIATE ANY SOIL CONTAMINATION AND MONITOR FOR WORKERS PROTECTION.

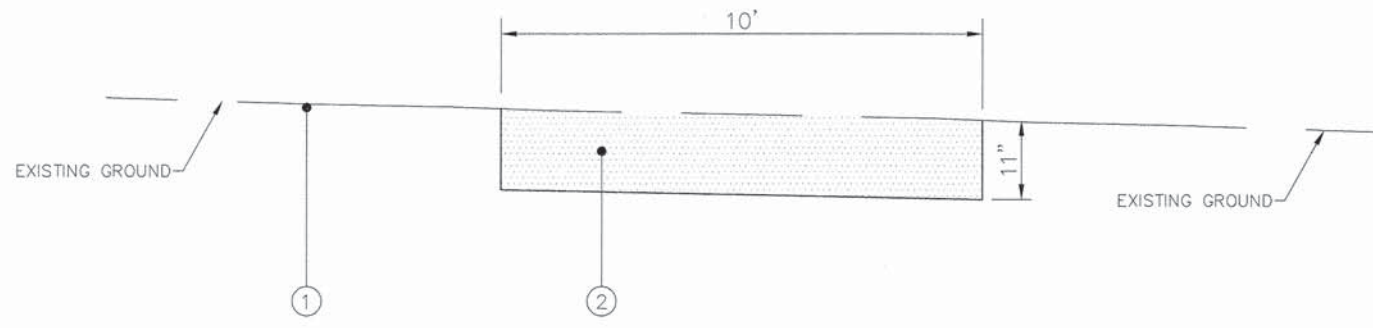
ANY WASTE GENERATED AS SPECIAL WASTE FROM THIS PROJECT SHOULD BE MANIFESTED OFF-SITE USING THE GENERATOR NUMBER ASSOCIATED WITH LAKE COUNTY. THE GENERATOR NUMBER FOR LAKE COUNTY IS 0978995044.

FILE NAME = 4478.002-PR3.dwg	USER NAME = GEORGE WHITTEN	DESIGNED - JRB	REVISED - -	STATE OF ILLINOIS DEPARTMENT OF TRANSPORTATION	INDEX OF SHEETS, GENERAL NOTES, STATE STANDARDS AND DISTRICT STANDARDS			FA-RTE	SECTION	COUNTY	TOTAL SHEETS	SHEET NO.
	PLOT SCALE = -	DRAWN - GHA	REVISED - -					2774	11-00033-00-SW	LAKE	21	2
	PLOT DATE = 01.22.15	CHECKED - DPB	REVISED - -		SCALE NONE SHEET NO. 1 OF 1 SHEETS STA. TO STA.			CONTRACT # 61B74				
		DATE - 01.22.15	REVISED - -		ILLINOIS FED. AID PROJECT							

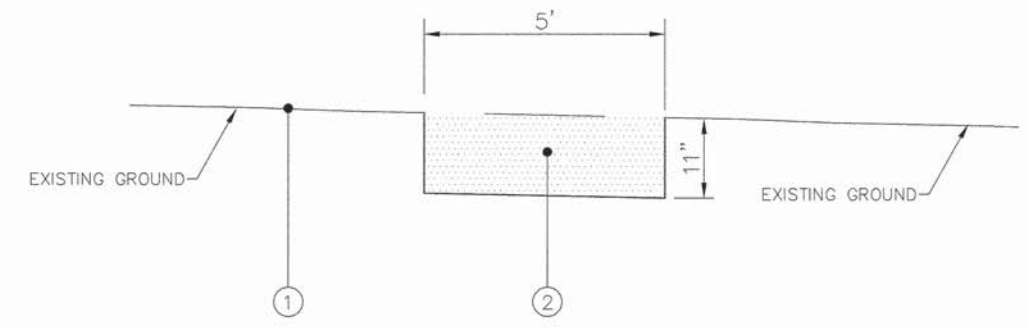
SUMMARY OF QUANTITIES

Special Provision	Specialty Item	Code No.	Item	Unit	Total Quantity	Construction Code	
						80% Federal	100% Local
						20% Local	
		20100110	TREE REMOVAL (6 TO 15 UNIT DIAMETER)	UNIT	40	40	
		20101000	TEMPORARY FENCE	FOOT	355	355	
		20101100	TREE TRUNK PROTECTION	EACH	6	6	
X		20101200	TREE ROOT PRUNING	EACH	8	8	
X		20101400	NITROGEN FERTILIZER NUTRIENT	POUND	12	12	
X		20101600	POTASSIUM FERTILIZER NUTRIENT	POUND	12	12	
X		20101700	SUPPLEMENTAL WATERING	UNIT	6	6	
		20200100	EARTH EXCAVATION	CU YD	245	215	30
		21101615	TOPSOIL FURNISH AND PLACE, 4"	SQ YD	650	650	
X		25000100	SEEDING, CLASS 1	ACRE	0.20	0.20	
X		25100630	EROSION CONTROL BLANKET	SQ YD	650	650	
		28000400	PERIMETER EROSION BARRIER	FOOT	675	675	
		35101600	AGGREGATE BASE COURSE, TYPE B 4"	SQ YD	82	82	
		35102000	AGGREGATE BASE COURSE, TYPE B 8"	SQ YD	685	598	87
		40603335	HOT-MIX ASPHALT SURFACE COURSE, MIX "D", N50	TON	105	92	13
		42400410	PORTLAND CEMENT CONCRETE SIDEWALK 8 INCH	SQ FT	500	500	
		42400800	DETECTABLE WARNINGS	SQ FT	140	140	
		44000500	COMBINATION CURB AND GUTTER REMOVAL	FOOT	102	102	
		44000600	SIDEWALK REMOVAL	SQ FT	105	105	
		48101200	AGGREGATE SHOULDER, TYPE B	TON	10	10	
		542C0217	PIPE CULVERTS, CLASS C, TYPE 1 12"	FOOT	16	16	
		54215547	METAL END SECTIONS 12"	EACH	2	2	
		60300305	FRAMES AND LIDS TO BE ADJUSTED	EACH	3	3	

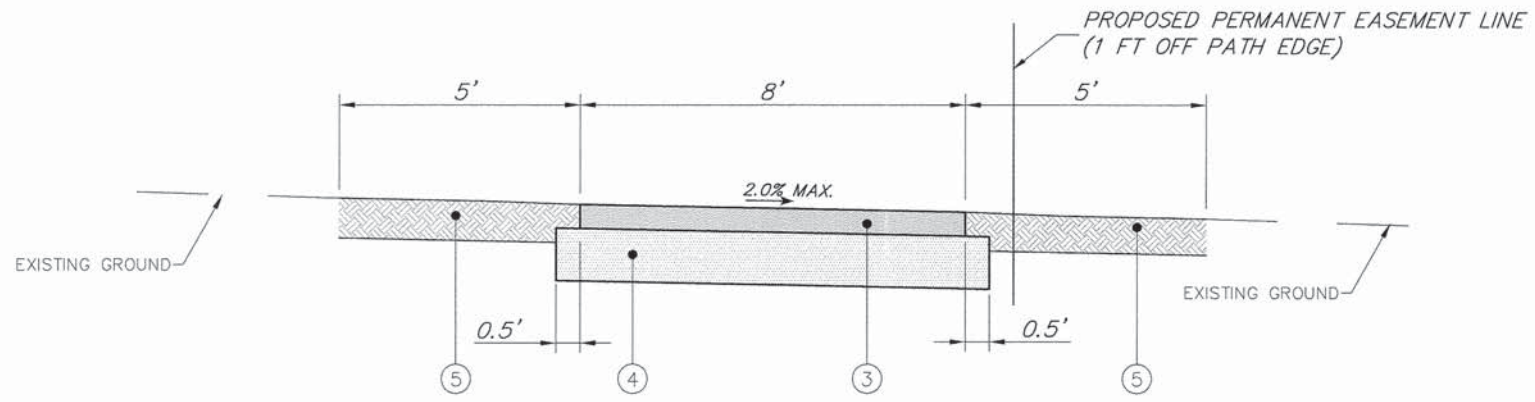
Special Provision	Specialty Item	Code No.	Item	Unit	Total Quantity	Construction Code	
						80% Federal	100% Local
						20% Local	
		60603800	COMBINATION CONCRETE CURB AND GUTTER, TYPE B-6.12	FOOT	72	72	
		60605000	COMBINATION CONCRETE CURB AND GUTTER, TYPE B-6.24	FOOT	30	30	
X		66900200	NON-SPECIAL WASTE DISPOSAL	CU YD	230	230	
X		66900450	SPECIAL WASTE PLANS AND REPORTS	L SUM	1	1	
X		66900530	SOIL DISPOSAL ANALYSIS	EACH	3	3	
		67100100	MOBILIZATION	L SUM	1	1	
		70102620	TRAFFIC CONTROL AND PROTECTION, STANDARD 701501	L SUM	1	1	
		70102640	TRAFFIC CONTROL AND PROTECTION, STANDARD 701801	L SUM	1	1	
		72000100	SIGN PANEL - TYPE 1	SQ FT	49	49	
		72900200	METAL POST - TYPE B	FOOT	105	105	
X		78000200	THERMOPLASTIC PAVEMENT MARKING - LINE 4"	FOOT	202	202	
X		78000400	THERMOPLASTIC PAVEMENT MARKING - LINE 6"	FOOT	168	168	
X		78000600	THERMOPLASTIC PAVEMENT MARKING - LINE 12"	FOOT	402	402	
X		78000650	THERMOPLASTIC PAVEMENT MARKING - LINE 24"	FOOT	110	110	
		78300100	PAVEMENT MARKING REMOVAL	SQ FT	128	128	
X		A2006516	TREE, QUERCUS BICOLOR (SWAMP WHITE OAK), 2" CALIPER, BALLED AND BURLAPPED	EACH	5	5	
X		X7240500	RELOCATE EXISTING SIGNS	EACH	3	3	
X	X	XX000503	SPLIT RAIL FENCE	FOOT	50	50	
X		XX001758	WOOD FENCE REMOVAL	FOOT	50	50	
X		XX008161	REMOVE AND REINSTALL MODULAR CONCRETE PAVERS	SQ FT	380	380	
X		Z0013798	CONSTRUCTION LAYOUT	L SUM	1	1	
X		Z0030850	TEMPORARY INFORMATION SIGNING	SQ FT	103	103	



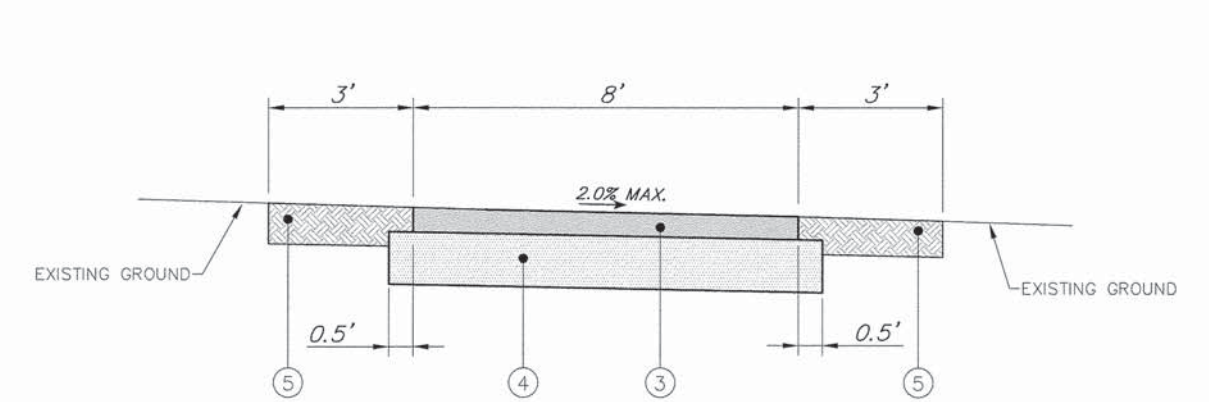
EXISTING TYPICAL SECTION
STA. 1+00 TO STA. 6+90



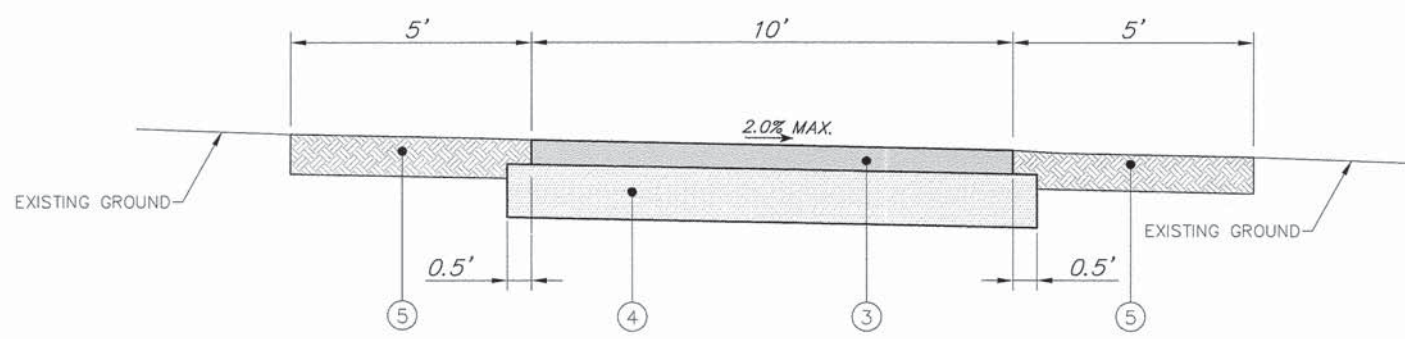
EXISTING TYPICAL SECTION
SOUTH PROJECT PATH
STA. 0+00 TO STA. 1+05



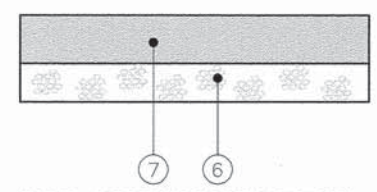
PROPOSED TYPICAL SECTION
STA. 1+00 TO STA. 6+90



PROPOSED TYPICAL SECTION
SOUTH PROJECT PATH
STA. 0+00 TO STA. 1+05



PROPOSED TYPICAL SECTION
ACCESS DRIVE
STA. 0+00 TO STA. 0+72.74



PCC SIDEWALK DETAIL

LEGEND:

- ① EXISTING GROUND
- ② PROPOSED EARTH EXCAVATION FOR BIKE PATH & SHOULDER
- ③ PROPOSED HOT-MIX ASPHALT SURFACE COURSE, MIX "D", N50, 3"
- ④ PROPOSED AGGREGATE BASE COURSE, TYPE B, 8"
- ⑤ PROPOSED TOPSOIL FURNISH AND PLACE 4", SEEDING CLASS 1, AND SOIL EROSION CONTROL BLANKET
- ⑥ AGGREGATE BASE COURSE, TYPE B, 4"
- ⑦ PCC SIDEWALK, 8"

HOT-MIX ASPHALT MIXTURE REQUIREMENTS	
MIXTURE TYPE	AIR VOIDS
HOT-MIX ASPHALT SURFACE COURSE, MIX "D" N50, 3"	4% @ 50 GYR

THE UNIT WEIGHT USED TO CALCULATE ALL HMA SURFACE MIXTURE QUANTITIES IS 112 LBS / SQ YD / IN.
THE "AC TYPE" SHALL BE PG 64-22 UNLESS MODIFIED BY DISTRICT ONE PROVISIONS.
FOR USE OF RECYCLED MATERIALS, SEE SPECIAL PROVISIONS.

FILE NAME = 4478.002-PR3.dwg	USER NAME = GEORGE WHITTEN	DESIGNED - JRB	REVISED - -
		DRAWN - GHA	REVISED - -
		CHECKED - DPB	REVISED - -
		DATE - 01.22.15	REVISED - -

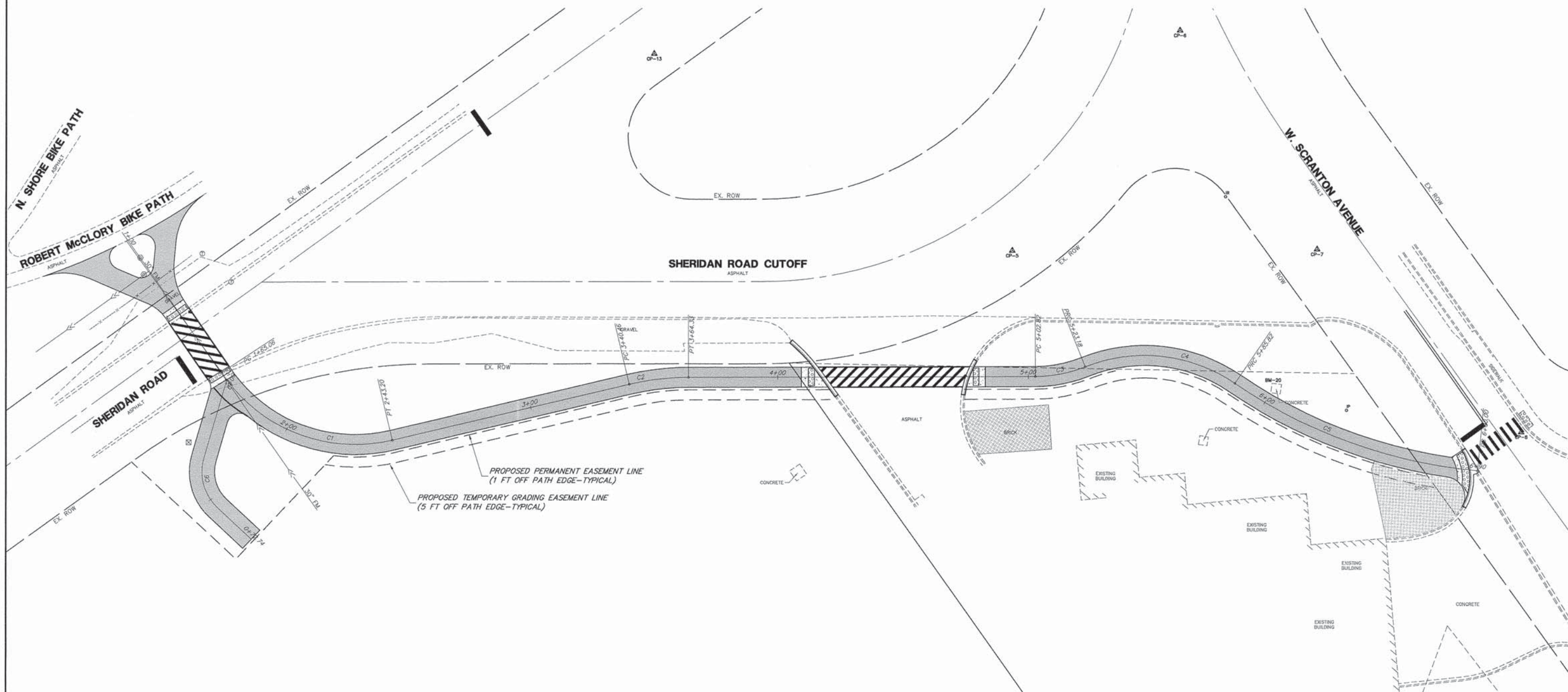
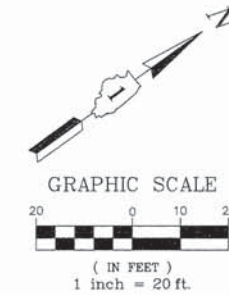
**STATE OF ILLINOIS
DEPARTMENT OF TRANSPORTATION**

TYPICAL SECTIONS	
SCALE NONE	SHEET NO. 1 OF 1 SHEETS
STA.	TO STA.

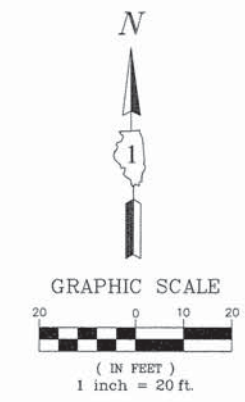
FA-4 RTE 2774	SECTION 11-00033-00-SW	COUNTY LAKE	TOTAL SHEETS 21	SHEET NO. 4
CONTRACT # 61B74			ILLINOIS FED. AID PROJECT	

Curve Table													
Curve #	PC STA.	PC Northing	PC Easting	PI STA.	PT STA.	PT Northing	PT Easting	DELTA	D	R	T	L	E
C1	1+65.06	1822.79	1876.49	2+09.84	2+43.20	1862.35	1938.29	69°57'24"	N57°22'25"E	64.00	44.78	78.14	14.11
C2	3+40.46	1952.27	1975.35	3+52.45	3+64.33	1973.11	1986.88	13°09'04"	N28°58'15"E	104.00	11.99	23.87	0.69
C3	5+02.82	2085.79	2067.39	5+13.12	5+23.18	2104.17	2075.87	21°36'30"	N24°44'32"E	54.00	10.31	20.37	0.97
C4	5+23.18	2104.17	2075.87	5+57.26	5+85.82	2148.90	2116.11	56°04'27"	N41°58'30"E	64.00	34.08	62.64	8.51
C5	5+85.82	2148.90	2116.11	6+39.06	6+90	2207.39	2200.98	29°04'28"	N55°25'46"E	205.32	53.24	104.19	6.79
C6	0+32.37	1797.21	1900.07	0+44.67	0+54.43	1789.89	1919.70	63°11'18"	S69°32'24"E	20.00	12.30	22.06	3.48

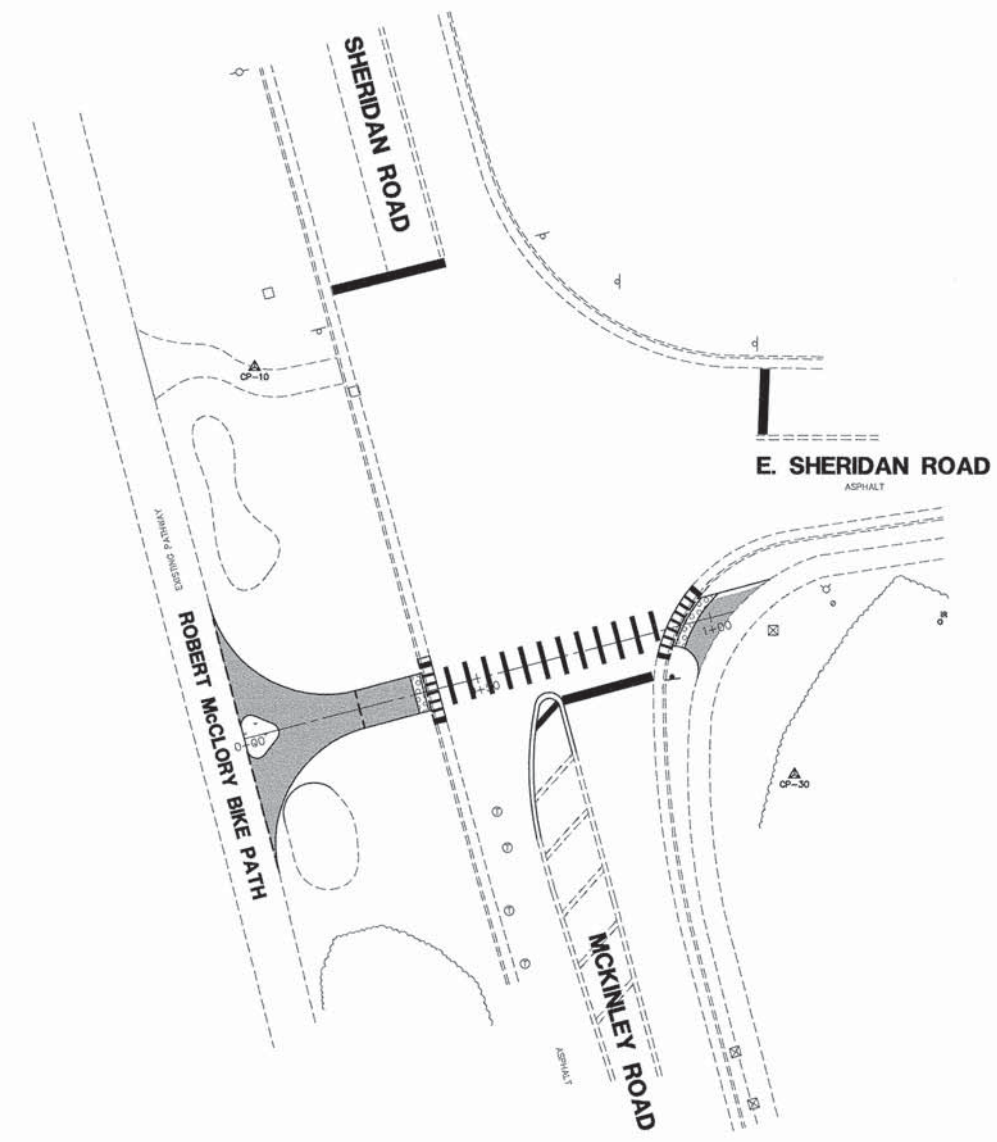
Point Table				
Point #	Northing	Easting	Elevation	Description
5	2107.76	2021.00	678.10	CP5-MAG
6	2213.41	1988.63	673.00	CP6-MAG
7	2206.92	2091.61	676.26	CP7-MAG
8	2230.54	2198.60	678.69	CP8-MAG
12	1863.26	1873.79	682.91	CP12-MAG
13	2037.54	1873.61	684.59	CP13-MAG
20	2160.95	2125.61	679.57	BM20-DISK



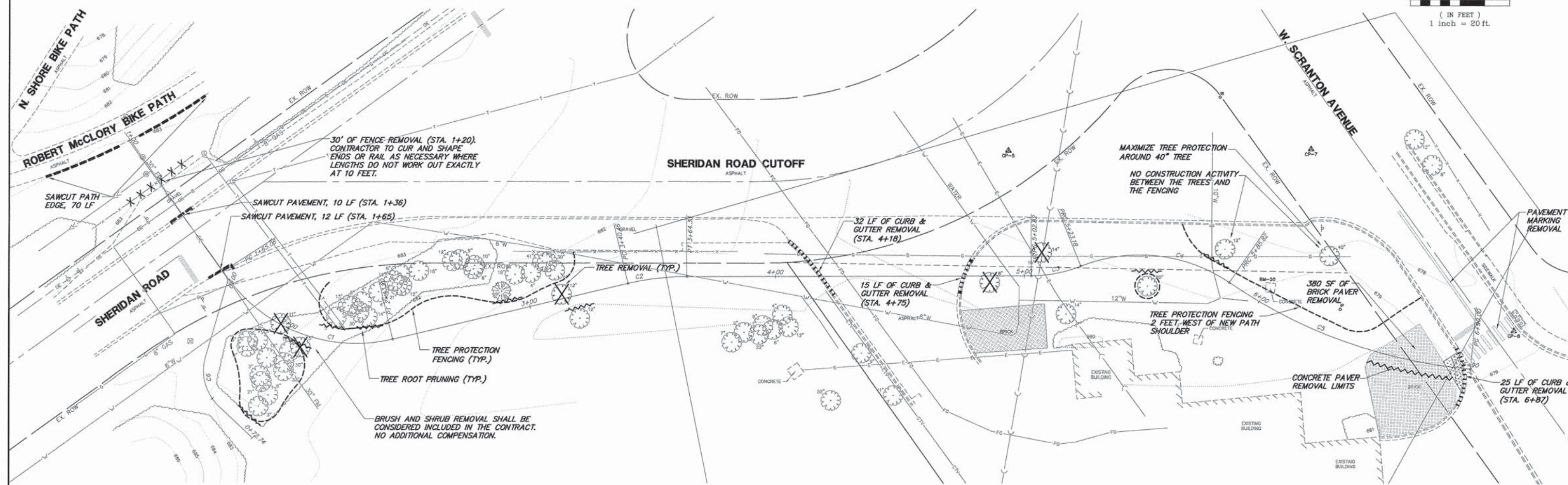
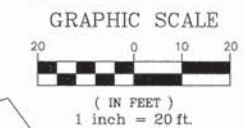
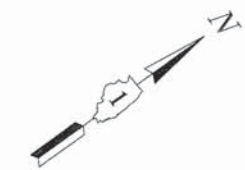
FILE NAME = 4478.002-PR3.dwg	USER NAME = GEORGE WHITTEN	DESIGNED - JRB	REVISED - -	STATE OF ILLINOIS DEPARTMENT OF TRANSPORTATION	ALIGNMENT AND TIES			FA-U RTE 2774	SECTION 11-00033-00-SW	COUNTY LAKE	TOTAL SHEETS 21	SHEET NO. 5
PLOT SCALE = -	DESIGNED - JRB	REVISED - -	SCALE NONE		SHEET NO. 1 OF 1 SHEETS	STA.	TO STA.	CONTRACT #: 61B74		ILLINOIS FED. AID PROJECT		
PLOT DATE = 01.22.15	DESIGNED - JRB	REVISED - -										
	DESIGNED - JRB	REVISED - -										



Point Table				
Point #	Northing	Easting	Elevation	Description
10	10000.00	10000.00	100.00	CP10-MAG
20	10000.00	10255.39	96.80	CP20-MAG
30	9915.56	10112.30	99.79	CP30-MAG



FILE NAME = 4478.002-PR3.dwg	USER NAME = GEORGE WHITTEN	DESIGNED - JRB	REVISED - -	STATE OF ILLINOIS DEPARTMENT OF TRANSPORTATION	ALIGNMENT AND TIES			FA-RTE 2774	SECTION 11-00033-00-SW	COUNTY LAKE	TOTAL SHEETS 21	SHEET NO. 6
	PLOT SCALE = -	DRAWN - GHA	REVISED - -		SCALE NONE	SHEET NO. 1 OF 1 SHEETS	STA.	TO STA.	CONTRACT #: 61874		ILLINOIS FED. AID PROJECT	
PLOT DATE = 01.22.15	CHECKED - DPB	REVISIED - -	REVISIED - -									
	DATE - 01.22.15	REVISIED - -	REVISIED - -									



30' OF FENCE-REMOVAL (STA. 1+20).
CONTRACTOR TO CUR AND SHAPE
ENDS OR RAIL AS NECESSARY WHERE
LENGTHS DO NOT WORK OUT EXACTLY
AT 10 FEET.

SAWCUT PAVEMENT, 10 LF (STA. 1+36)
SAWCUT PAVEMENT, 12 LF (STA. 1+65)

32 LF OF CURB &
GUTTER REMOVAL
(STA. 4+18)

15 LF OF CURB &
GUTTER REMOVAL
(STA. 4+75)

25 LF OF CURB &
GUTTER REMOVAL
(STA. 6+87)

380 SF OF
BRICK PAVER
REMOVAL

MAXIMIZE TREE PROTECTION
AROUND 40" TREE
NO CONSTRUCTION ACTIVITY
BETWEEN THE TREES AND
THE FENCING

TREE PROTECTION FENCING
2 FEET WEST OF NEW PATH
SHOULDER

TREE PROTECTION
FENCING (TYP.)
TREE ROOT PRUNING (TYP.)

BRUSH AND SHRUB REMOVAL SHALL BE
CONSIDERED INCLUDED IN THE CONTRACT.
NO ADDITIONAL COMPENSATION.

LEGEND:

- PCC SIDEWALK REMOVAL
- PAVEMENT REMOVAL - FULL DEPTH
- CURB REMOVAL/CURB & GUTTER REMOVAL
- TREE REMOVAL
- SIGN REMOVAL
- POST REMOVAL
- SAWCUT, FULL DEPTH
- TREE PROTECTION
- FENCE REMOVAL
- CONCRETE PAVERS
- TREE ROOT PRUNING

FILE NAME = 4478.002-PR3.dwg

USER NAME = GEORGE WHITTEN
PLOT SCALE = -
PLOT DATE = 01.22.15

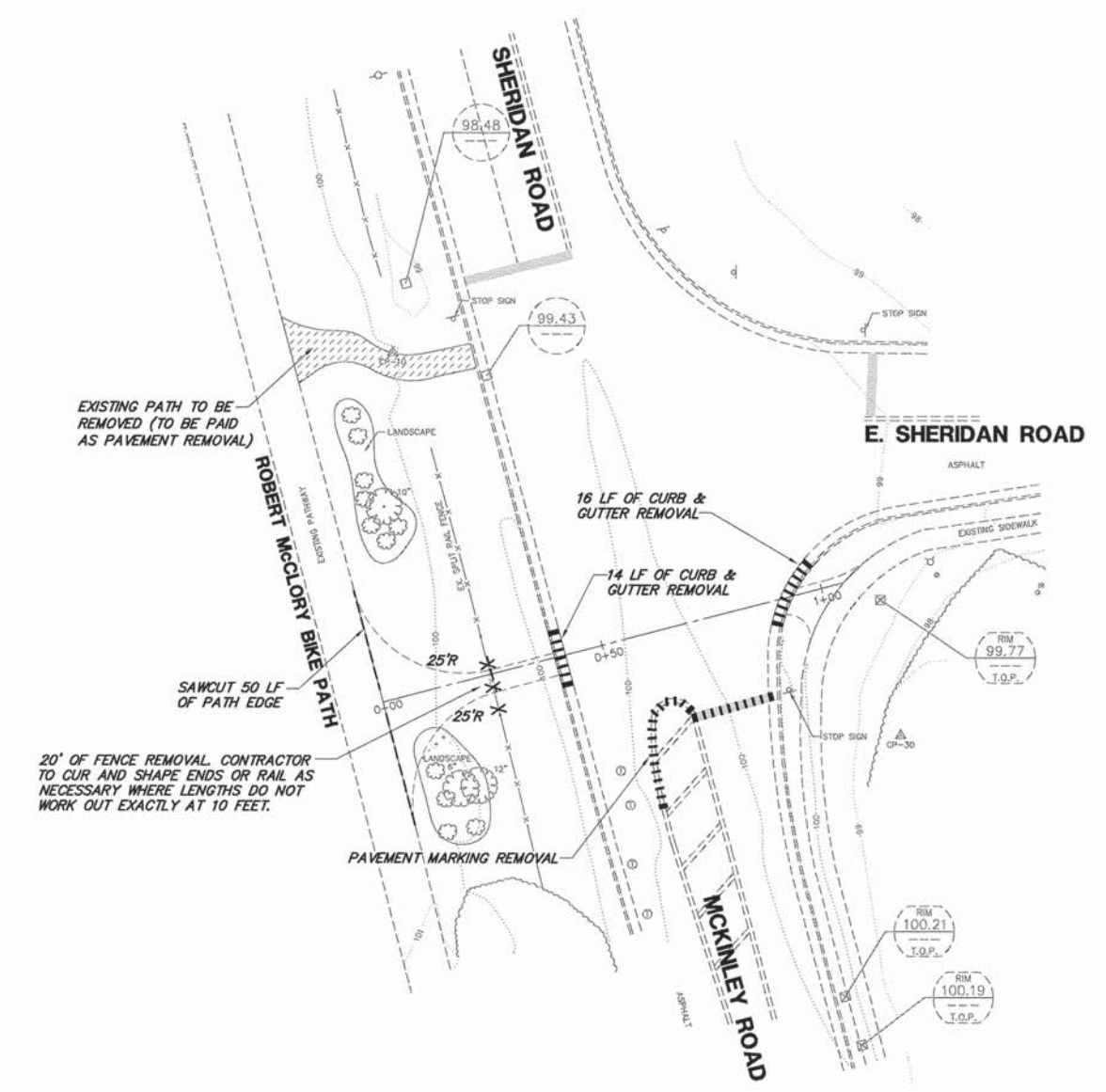
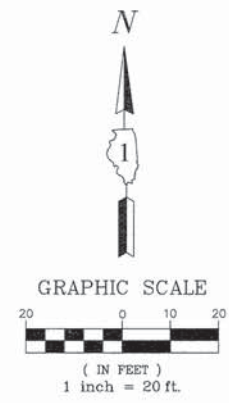
DESIGNED - JRB	REVISED - -
DRAWN - GHA	REVISED - -
CHECKED - DPB	REVISED - -
DATE - 01.22.15	REVISED - -

DESIGNED - JRB	REVISED - -
DRAWN - GHA	REVISED - -
CHECKED - DPB	REVISED - -
DATE - 01.22.15	REVISED - -

**STATE OF ILLINOIS
DEPARTMENT OF TRANSPORTATION**

EXISTING CONDITIONS AND DEMOLITION PLAN	
SCALE NONE	SHEET NO. 1 OF 1 SHEETS
STA.	TO STA.

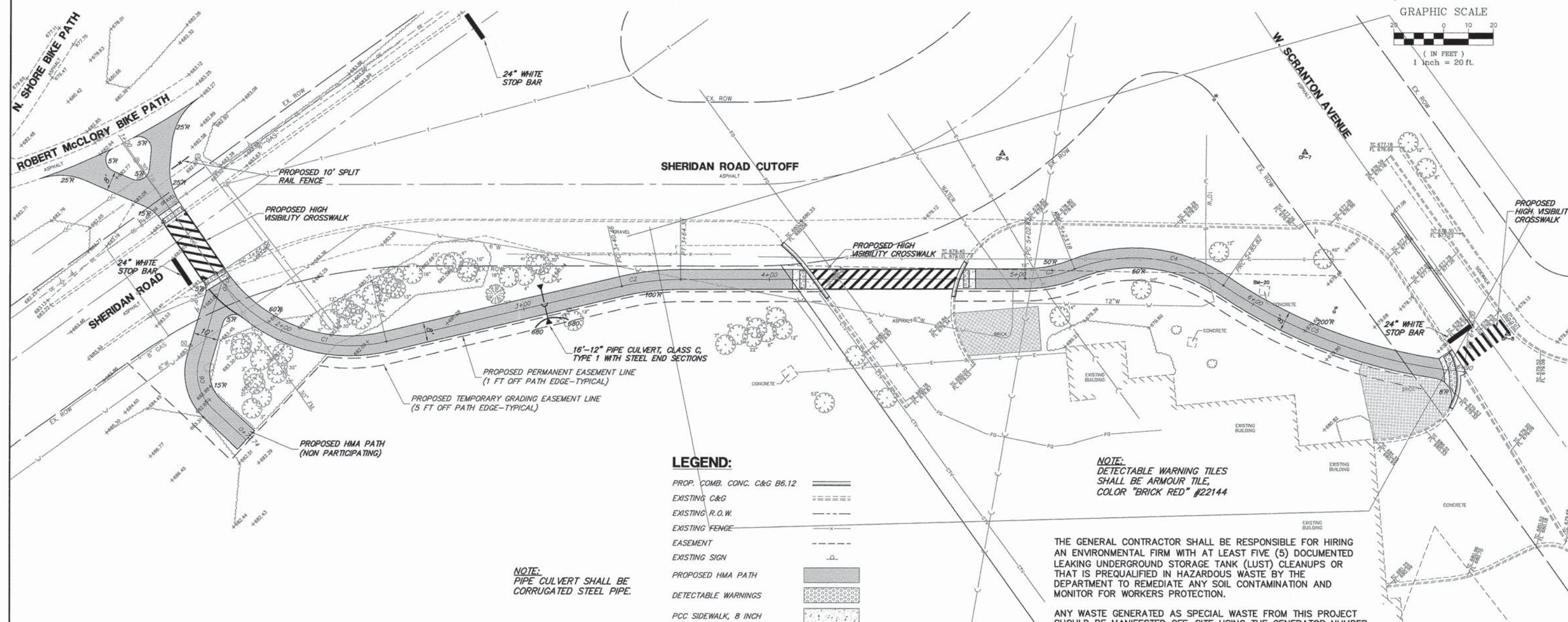
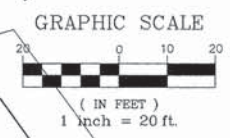
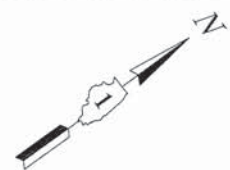
FA-U RTE	SECTION	COUNTY	TOTAL SHEETS	SHEET NO.
2774	11-00033-00-SW	LAKE	21	7
CONTRACT #:			61B74	
ILLINOIS FED. AID PROJECT				



LEGEND:

PCC SIDEWALK REMOVAL	
PAVEMENT REMOVAL - FULL DEPTH	
CURB REMOVAL/CURB & GUTTER REMOVAL	
TREE REMOVAL	
SIGN REMOVAL	
POST REMOVAL	
SAWCUT, FULL DEPTH	
TREE PROTECTION	
FENCE REMOVAL	
CONCRETE PAVERS	

FILE NAME = 4478.002-PR3.dwg	USER NAME = GEORGE WHITTEN	DESIGNED - JRB	REVISED - -	STATE OF ILLINOIS DEPARTMENT OF TRANSPORTATION	EXISTING CONDITIONS AND DEMOLITION PLAN			FA-URTE 2774	SECTION 11-00033-00-SW	COUNTY LAKE	TOTAL SHEETS 21	SHEET NO. 8
	PLOT SCALE = -	DRAWN - GHA	REVISED - -					SCALE NONE SHEET NO. 1 OF 1 SHEETS STA. TO STA.			CONTRACT #: 61B74	
	PLOT DATE = 01.22.15	DATE - 01.22.15	REVISED - -	ILLINOIS FED. AID PROJECT								



LEGEND:

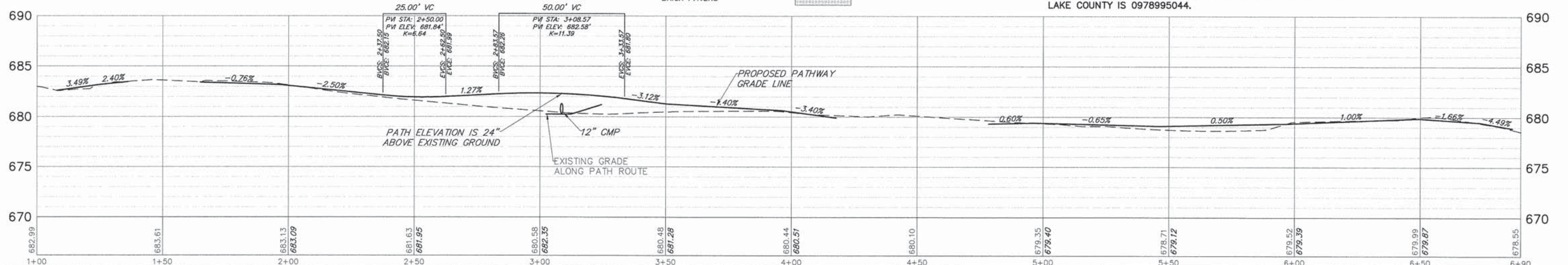
PROP. COMB. CONC. C&G B6.12	
EXISTING C&G	
EXISTING R.O.W.	
EXISTING FENCE	
EASEMENT	
EXISTING SIGN	
PROPOSED HMA PATH	
DETECTABLE WARNINGS	
PCC SIDEWALK, 8 INCH	
BRICK PAVERS	

NOTE:
DETECTABLE WARNING TILES SHALL BE ARMOUR TILE, COLOR "BRICK RED" #22144

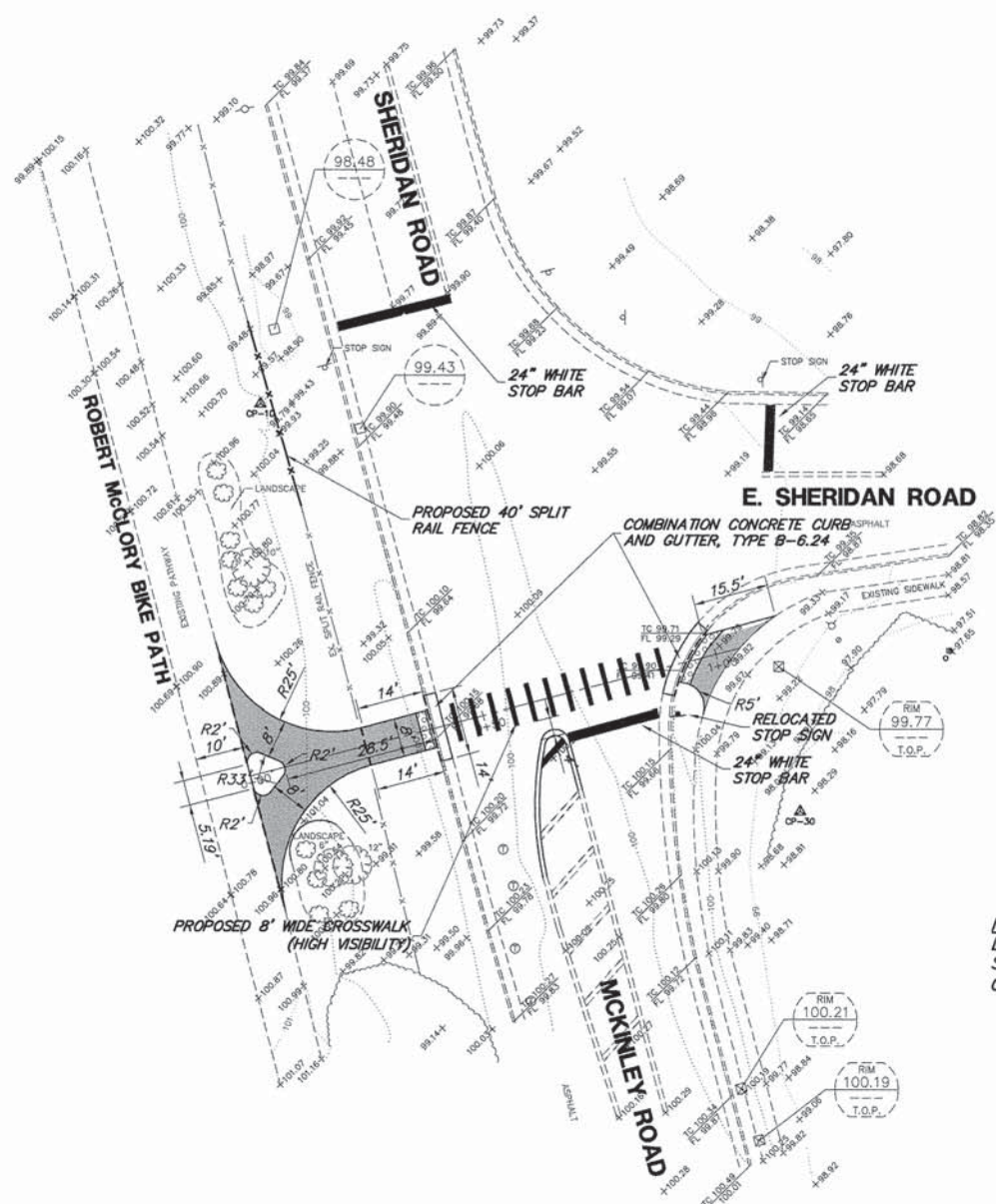
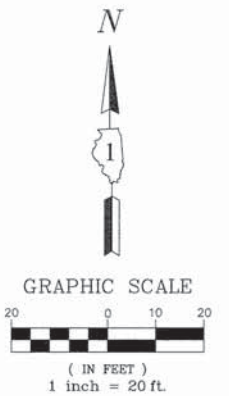
THE GENERAL CONTRACTOR SHALL BE RESPONSIBLE FOR HIRING AN ENVIRONMENTAL FIRM WITH AT LEAST FIVE (5) DOCUMENTED LEAKING UNDERGROUND STORAGE TANK (LUST) CLEANUPS OR THAT IS PREQUALIFIED IN HAZARDOUS WASTE BY THE DEPARTMENT TO REMEDIATE ANY SOIL CONTAMINATION AND MONITOR FOR WORKERS PROTECTION.

ANY WASTE GENERATED AS SPECIAL WASTE FROM THIS PROJECT SHOULD BE MANIFESTED OFF-SITE USING THE GENERATOR NUMBER ASSOCIATED WITH LAKE COUNTY. THE GENERATOR NUMBER FOR LAKE COUNTY IS 0978995044.

NOTE:
PIPE CULVERT SHALL BE CORRUGATED STEEL PIPE.



FILE NAME = 4478.002-PR3.dwg	USER NAME = GEORGE WHITTEN	DESIGNED - JRB	REVISED - -	STATE OF ILLINOIS DEPARTMENT OF TRANSPORTATION	PLAN AND PROFILE		FA-11 RTE 2774	SECTION 11-00033-00-SW	COUNTY LAKE	TOTAL SHEETS 21	SHEET NO. 9	
		DRAWN - GHA	REVISED - -		SCALE NONE	SHEET NO. 1 OF 1 SHEETS	STA. TO STA.	CONTRACT # 61874		ILLINOIS FED. AID PROJECT		
		CHECKED - DPB	REVISED - -									
		DATE - 01.22.15	REVISED - -									



NOTE:
 DETECTABLE WARNING TILES
 SHALL BE ARMOUR TILE,
 COLOR "BRICK RED" #22144

- LEGEND:**
- PROPOSED HMA PATH
 - PCC SIDEWALK, 8 INCH WITH DETECTABLE WARNINGS
 - PROP. COMB. CONC. C&G B6.24

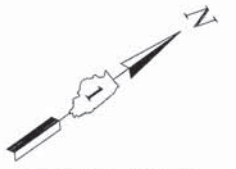
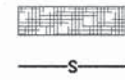
THE GENERAL CONTRACTOR SHALL BE RESPONSIBLE FOR HIRING AN ENVIRONMENTAL FIRM WITH AT LEAST FIVE (5) DOCUMENTED LEAKING UNDERGROUND STORAGE TANK (LUST) CLEANUPS OR THAT IS PREQUALIFIED IN HAZARDOUS WASTE BY THE DEPARTMENT TO REMEDIATE ANY SOIL CONTAMINATION AND MONITOR FOR WORKERS PROTECTION.

ANY WASTE GENERATED AS SPECIAL WASTE FROM THIS PROJECT SHOULD BE MANIFESTED OFF-SITE USING THE GENERATOR NUMBER ASSOCIATED WITH LAKE COUNTY. THE GENERATOR NUMBER FOR LAKE COUNTY IS 0978995044.

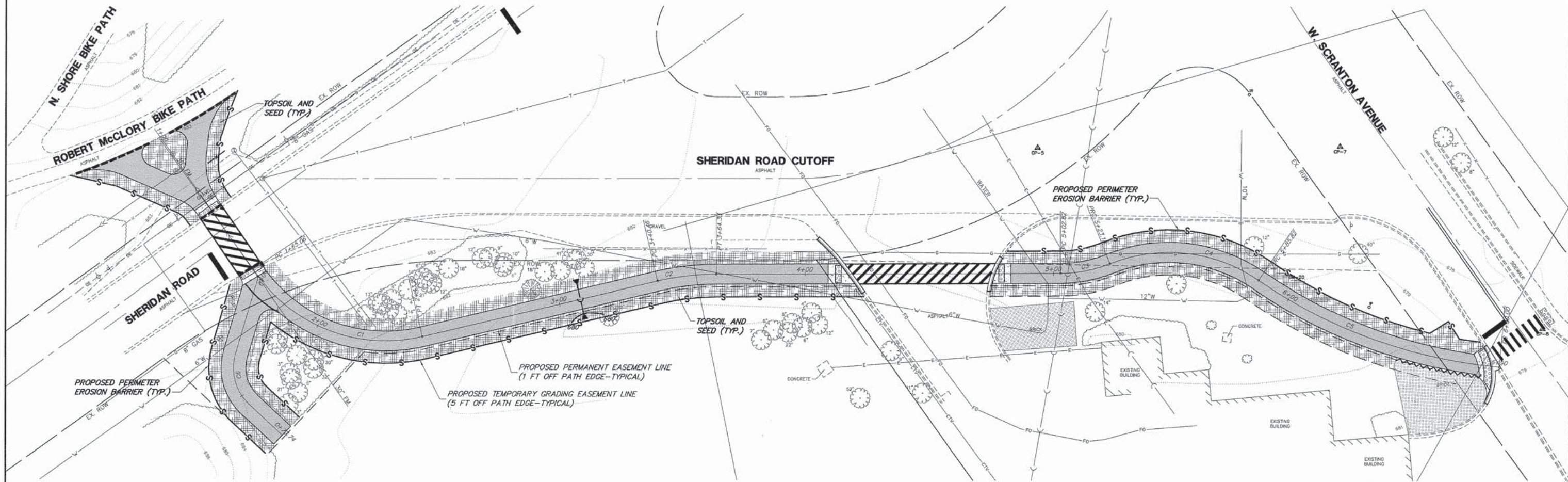
FILE NAME = 4478.002-PR3.dwg	USER NAME = GEORGE WHITTEN	DESIGNED - JRB	REVISED - -	STATE OF ILLINOIS DEPARTMENT OF TRANSPORTATION	PLAN AND PROFILE			FA-U RTE 2774	SECTION 11-00033-00-SW	COUNTY LAKE	TOTAL SHEETS 21	SHEET NO. 10
	PLOT SCALE = -	DRAWN - GHA	REVISED - -		SCALE NONE	SHEET NO. 1 OF 1 SHEETS	STA.	TO STA.	CONTRACT # 61B74			
	PLOT DATE = 01.22.15	CHECKED - DPB	REVISED - -		ILLINOIS FED. AID PROJECT							
		DATE - 01.22.15	REVISED - -									

LEGEND:

TOPSOIL FURNISH AND PLACE, 4"
 SEEDING, CLASS 1
 EROSION CONTROL BLANKET
 PERIMETER EROSION BARRIER



GRAPHIC SCALE
 (IN FEET)
 1 inch = 20 ft.



FILE NAME = 4478.002-PR3.dwg

USER NAME = GEORGE WHITTEN
PLOT SCALE = -
PLOT DATE = 01.22.15

DESIGNED - JRB
DRAWN - GHA
CHECKED - DPB
DATE - 01.22.15

REVISED - -
REVISED - -
REVISED - -
REVISED - -

**STATE OF ILLINOIS
 DEPARTMENT OF TRANSPORTATION**

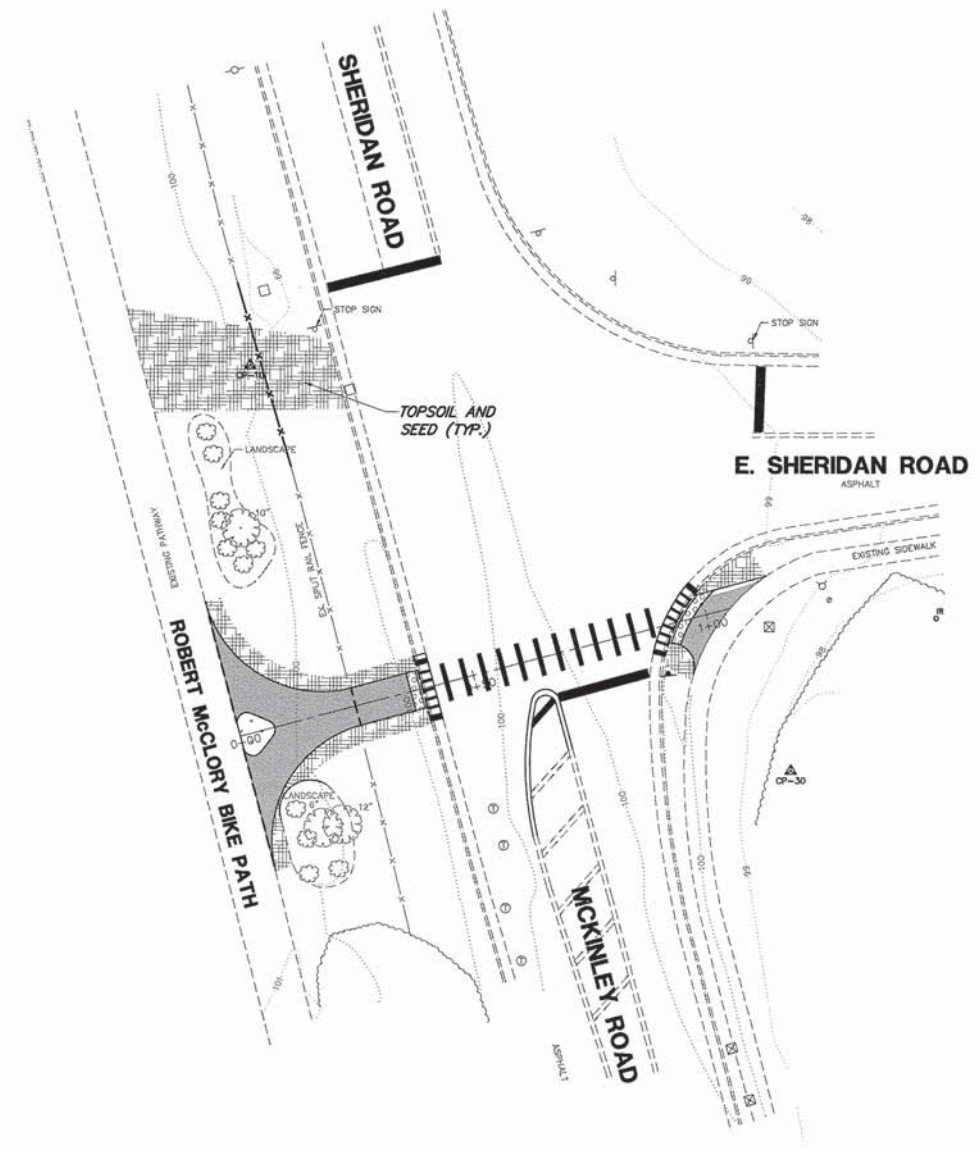
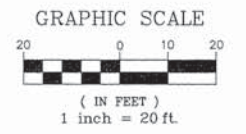
SOIL EROSION AND SEDIMENT CONTROL PLAN

FA-U RTE 2774	SECTION 11-00033-00-SW	COUNTY LAKE	TOTAL SHEETS 21	SHEET NO. 11
CONTRACT #: 61B74			ILLINOIS FED. AID PROJECT	

SCALE NONE SHEET NO. 1 OF 1 SHEETS STA. TO STA.

LEGEND:

TOPSOIL FURNISH AND PLACE, 4"
SEEDING, CLASS 1
EROSION CONTROL BLANKET
PERIMETER EROSION BARRIER



FILE NAME = 4478.002-PR3.dwg	USER NAME = GEORGE WHITTEN	DESIGNED - JRB	REVISED - -	STATE OF ILLINOIS DEPARTMENT OF TRANSPORTATION	SOIL EROSION AND SEDIMENT CONTROL PLAN			FA-11 RTE	SECTION	COUNTY	TOTAL SHEETS	SHEET NO.	
	PLOT SCALE = -	DRAWN - GHA	REVISED - -		2774	11-00033-00-SW	LAKE	21	12				
	PLOT DATE = 01.22.15	CHECKED - DPB	REVISED - -		SCALE NONE			SHEET NO. 1 OF 1 SHEETS		STA.	TO STA.	CONTRACT #:	61B74
		DATE - 01.22.15	REVISED - -		ILLINOIS FED. AID PROJECT								

SEQUENCE OF MAJOR ACTIVITIES







1. TREE REMOVAL WHERE NECESSARY (CLEAR & GRUB).
2. INSTALLATION OF SOIL EROSION AND SEDIMENT CONTROL MEASURES.
 - ORANGE CONSTRUCTION FENCING AND/OR SILT FENCE AROUND WETLANDS AND OTHER AREAS NOT TO BE DISTURBED.
 - PERIMETER SILT FENCE.
 - INLET PROTECTION ON EXISTING STRUCTURES CLOSE TO THE DISTURBED AREA.
3. OWNER PERFORMS WEEKLY AND "AFTER RAIN EVENT" INSPECTIONS STARTING UPON DISTURBANCE OF THE SITE (DEMOLITION OR INSTALLATION OF SOIL EROSION AND SEDIMENT CONTROL MEASURES).
4. DEMOLITION
5. INSTALL UTILITIES AND ASSOCIATED INLET & OUTLET PROTECTION.
6. CONSTRUCTION OF HMA PATH AND PCC SIDEWALK.
7. FINE GRADING.
8. INSTALLATION OF TOPSOIL, SOD, AND PERMANENT EROSION CONTROL.
9. REMOVAL OF TEMPORARY EROSION CONTROL MEASURE – ONLY – WHEN SITE HAS ACHIEVED FULL STABILIZATION.

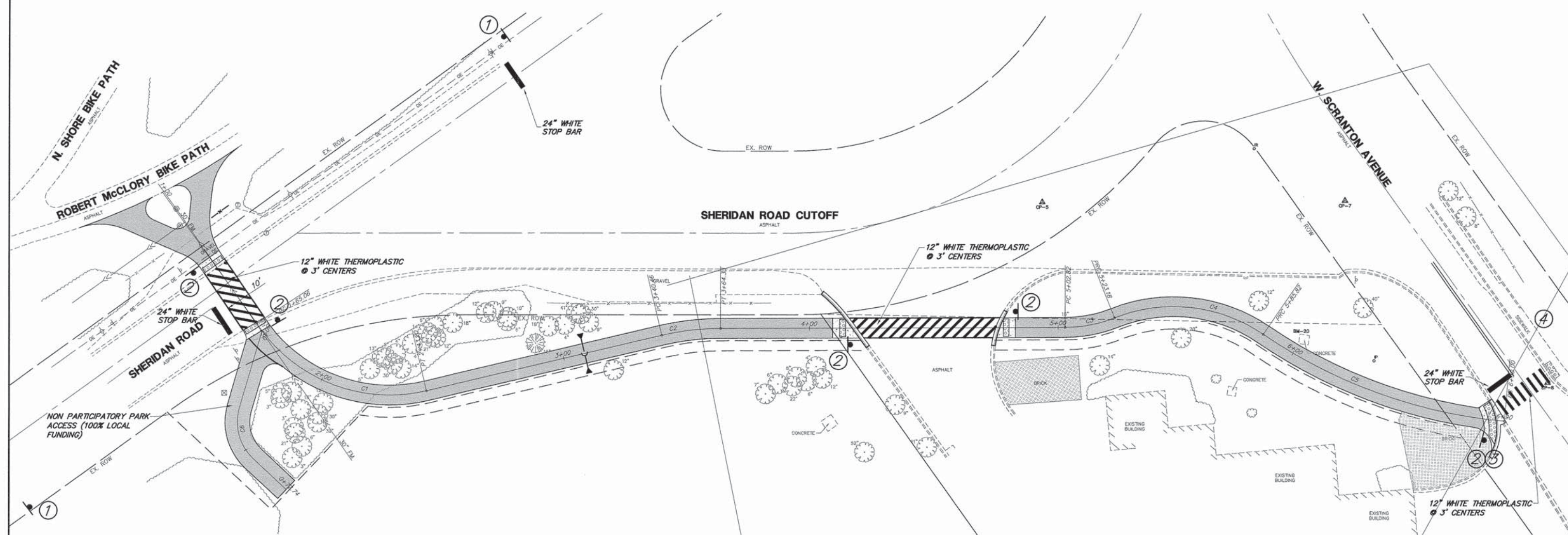
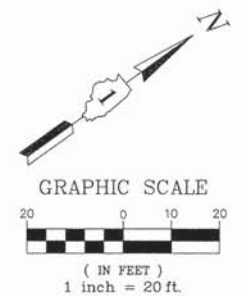
SEDIMENTATION AND EROSION CONTROL NOTES

- A. THE STORMWATER POLLUTION PREVENTION PLAN (SWP3) IS COMPRISED OF THIS DRAWING ("SITE MAP"), THE STANDARD DETAILS, THE PLAN NARRATIVE, AND ALL SUBSEQUENT REPORTS AND RELATED DOCUMENTS.
- B. ALL CONTRACTORS AND SUBCONTRACTORS INVOLVED WITH STORM WATER POLLUTION PREVENTION SHALL OBTAIN A COPY OF THE STORM WATER POLLUTION PREVENTION PLAN BECOME FAMILIAR WITH THEIR CONTENTS.
- C. BEST MANAGEMENT PRACTICES (BMP'S) AND CONTROLS SHALL CONFORM TO FEDERAL, STATE, OR LOCAL REQUIREMENTS OR MANUAL OF PRACTICE, AS APPLICABLE CONTRACTOR SHALL IMPLEMENT ADDITIONAL CONTROLS AS DIRECTED BY PERMITTING AGENCY OR OWNER.
- D. SITE MAP MUST CLEARLY DELINEATE ALL STATE WATERS. PERMITS FOR ANY CONSTRUCTION ACTIVITY IMPACTING STATE WATERS OR REGULATED WETLANDS MUST BE MAINTAINED ON SITE AT ALL TIMES.
- E. GENERAL CONTRACTOR SHALL DENOTE ON PLAN THE TEMPORARY PARKING AND STORAGE AREA WHICH SHALL ALSO BE USED AS THE EQUIPMENT MAINTENANCE AND CLEANING AREA, EMPLOYEE PARKING AREA, AND AREA FOR LOCATING PORTABLE FACILITIES, OFFICE TRAILERS, AND TOILET FACILITIES.
- F. ALL WASH WATER (CONCRETE TRUCKS, VEHICLE CLEANING, EQUIPMENT CLEANING, ETC.) SHALL BE DETAINED AND PROPERLY TREATED OR DISPOSED.
- G. SUFFICIENT OIL AND GREASE ABSORBING MATERIALS AND FLOTATION BOOMS SHALL BE MAINTAINED ON SITE OR READILY AVAILABLE TO CONTAIN AND CLEAN-UP FUEL OR CHEMICAL SPILLS AND LEAKS.
- H. DUST ON THE SITE SHALL BE CONTROLLED. THE USE OF MOTOR OILS AND OTHER PETROLEUM BASED OR TOXIC LIQUIDS FOR DUST SUPPRESSION OPERATIONS IS PROHIBITED. WATER USE MUST NOT CAUSE ADDITIONAL EROSION.
- I. RUBBISH, TRASH, GARBAGE, LITTER, OR OTHER SUCH MATERIALS SHALL BE DEPOSITED INTO SEALED CONTAINERS. MATERIALS SHALL BE PREVENTED FROM LEAVING THE PREMISES THROUGH THE ACTION OF WIND OR STORMWATER DISCHARGE INTO DRAINAGE DITCHES OR WATERS OF THE STATE.
- J. ALL STORM WATER POLLUTION PREVENTION MEASURES PRESENTED ON THIS PLAN, AND IN THE SWP3, SHALL BE INITIATED AS SOON AS PRACTICABLE.
- K. IF THE ACTION OF VEHICLES TRAVELING OVER THE GRAVEL CONSTRUCTION ENTRANCES IS NOT SUFFICIENT TO REMOVE THE MAJORITY OF DIRT. IF WASHING IS USED, PROVISIONS MUST BE MADE TO INTERCEPT THE WASH WATER AND TRAP THE SEDIMENT BEFORE IT IS CARRIED OFF THE SITE.
- L. ALL MATERIALS SPILLED, DROPPED, WASHED, OR TRACKED FROM VEHICLES ONTO ROADWAYS OR INTO STORM DRAINS MUST BE REMOVED BY THE END OF THE DAY.
- M. ON-SITE SOIL STOCKPILE AND BORROW AREAS SHALL BE PROTECTED FROM EROSION AND SEDIMENTATION THROUGH IMPLEMENTATION OF BEST MANAGEMENT PRACTICES. STOCKPILE AND BORROW AREA LOCATIONS SHALL BE NOTED ON THE SITE MAP AND PERMITTED IN ACCORDANCE WITH GENERAL PERMIT REQUIREMENTS.
- N. SLOPES SHALL BE LEFT IN A ROUGHENED CONDITION DURING THE GRADING PHASE TO REDUCE RUNOFF VELOCITIES AND EROSION.
- O. ALL CONSTRUCTION SHALL BE STABILIZED AT THE END OF EACH WORKING DAY, THIS INCLUDES BACKFILLING OF TRENCHES FOR UTILITY CONSTRUCTION AND PLACEMENT OF GRAVEL OR BITUMINOUS PAVING FOR ROAD CONSTRUCTION.
- P. SOIL DISTURBANCE SHALL BE CONDUCTED IN SUCH A MANNER AS TO MINIMIZE EROSION. SOIL STABILIZATION MEASURES SHALL CONSIDER THE TIME OF YEAR, SITE CONDITIONS AND THE USE OF TEMPORARY OR PERMANENT MEASURES
- Q. SOIL EROSION AND SEDIMENT CONTROL FEATURES SHALL BE CONSTRUCTED PRIOR TO THE COMMENCEMENT OF HYDROLOGIC DISTURBANCE OF UPLAND AREAS.
- R. DISTURBED AREAS SHALL BE STABILIZED WITH TEMPORARY OR PERMANENT MEASURES WITHIN 7 CALENDAR DAYS OF THE END OF ACTIVE HYDROLOGIC DISTURBANCE, REDISTURBANCE.
- S. ALL TEMPORARY AND PERMANENT EROSION CONTROL MEASURES MUST BE MAINTAINED AND REPAIRED AS NEEDED. THE PROPERTY OWNER SHALL ULTIMATELY BE RESPONSIBLE FOR MAINTAINENCE AND REPAIR.
- T. IF DEWATERING SERVICES ARE USED, ADJOINING PROPERTIES AND DISCHARGE LOCATIONS SHALL BE PROTECTED FROM EROSION. DISCHARGES SHALL BE ROUTED THROUGH AN EFFECTIVE SEDIMENT CONTROL MEASURE (e.g. SEDIMENT TRAP, SEDIMENT BASIN, SEDIMENT BAG OR OTHER APPROPRIATE MEASURE.
- U. THE EROSION CONTROL MEASURES INDICATED ON THE PLANS ARE THE MINIMUM REQUIREMENTS. ADDITIONAL MEASURES MAY BE REQUIRED, AS DIRECTED BY THE ENGINEER OR GOVERNING AGENCY.
- V. CONTRACTOR SHALL KEEP ROADWAY AND PARKING AREAS CLEAN AT ALL TIMES AND SHALL CLEAN PAVEMENT WITH A STREET CLEANER ON A DAILY BASIS.

FILE NAME = 4478.002-PR3.dwg	USER NAME = GEORGE WHITTEN	DESIGNED - JRB	REVISED - -	STATE OF ILLINOIS DEPARTMENT OF TRANSPORTATION	SOIL EROSION AND SEDIMENT CONTROL NOTES			FA-4 RTE	SECTION	COUNTY	TOTAL SHEETS	SHEET NO.
	PLOT SCALE = -	DRAWN - GHA	REVISED - -		2774	11-00033-00-SW	LAKE	21	13			
PLOT DATE = 01.22.15	CHECKED - DPB	REVISED - -						CONTRACT #: 61B74				
	DATE - 01.22.15	REVISED - -			SCALE NONE	SHEET NO. 1 OF 1 SHEETS	STA.	TO STA.	ILLINOIS FED. AID PROJECT			

SIGN LEGEND

- ①  W11-15
36"x36"
(FLOURESCENT
YELLOW GREEN)
-  W16-9P
30"x18"
(FLOURESCENT
YELLOW GREEN)
- ②  R1-1
18X18
- ③  M4-6
12X6
D11-1
24X18
- ④  (EXISTING)
-  (EXISTING)



FILE NAME = 4478.002-PR3.dwg

USER NAME = GEORGE WHITTEN
 DESIGNED - JRB
 DRAWN - GHA
 CHECKED - DPB
 PLOT DATE = 01.22.15


REVISED - -
 REVISED - -
 REVISED - -
 REVISED - -


**STATE OF ILLINOIS
 DEPARTMENT OF TRANSPORTATION**


SIGNAGE AND PAVEMENT MARKING PLAN
 SCALE NONE SHEET NO. 1 OF 1 SHEETS STA. TO STA.

FA-14 RTE.	SECTION	COUNTY	TOTAL SHEETS	SHEET NO.
2774	11-00033-00-SW	LAKE	21	15
CONTRACT #:			61B74	
ILLINOIS FED. AID PROJECT				


SIGN LEGEND

①  W11-15
36"X36"
(FLOURESCENT
YELLOW GREEN)

 W16-9P
30"X18"
(FLOURESCENT
YELLOW GREEN)


②  R1-1
18X18

N

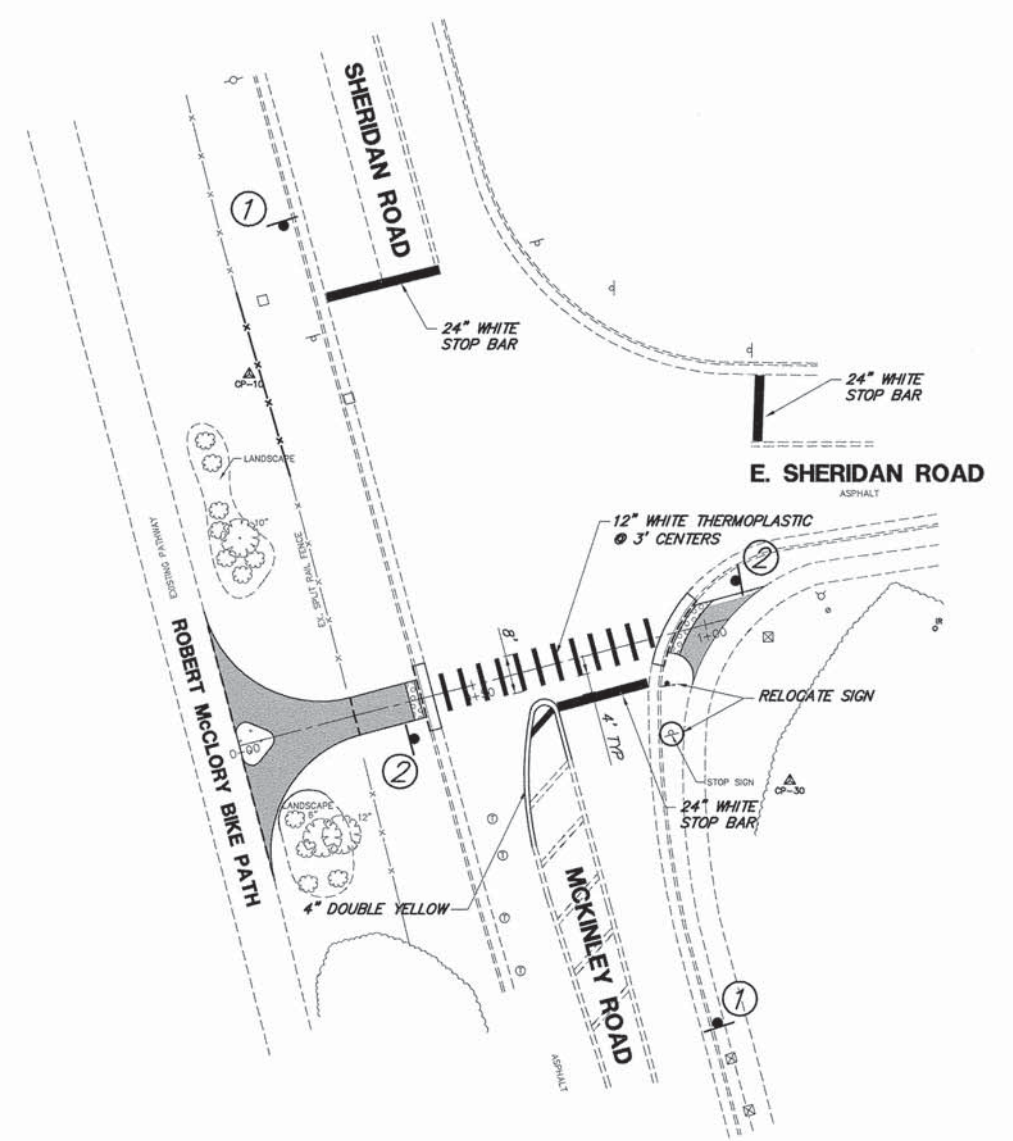


1

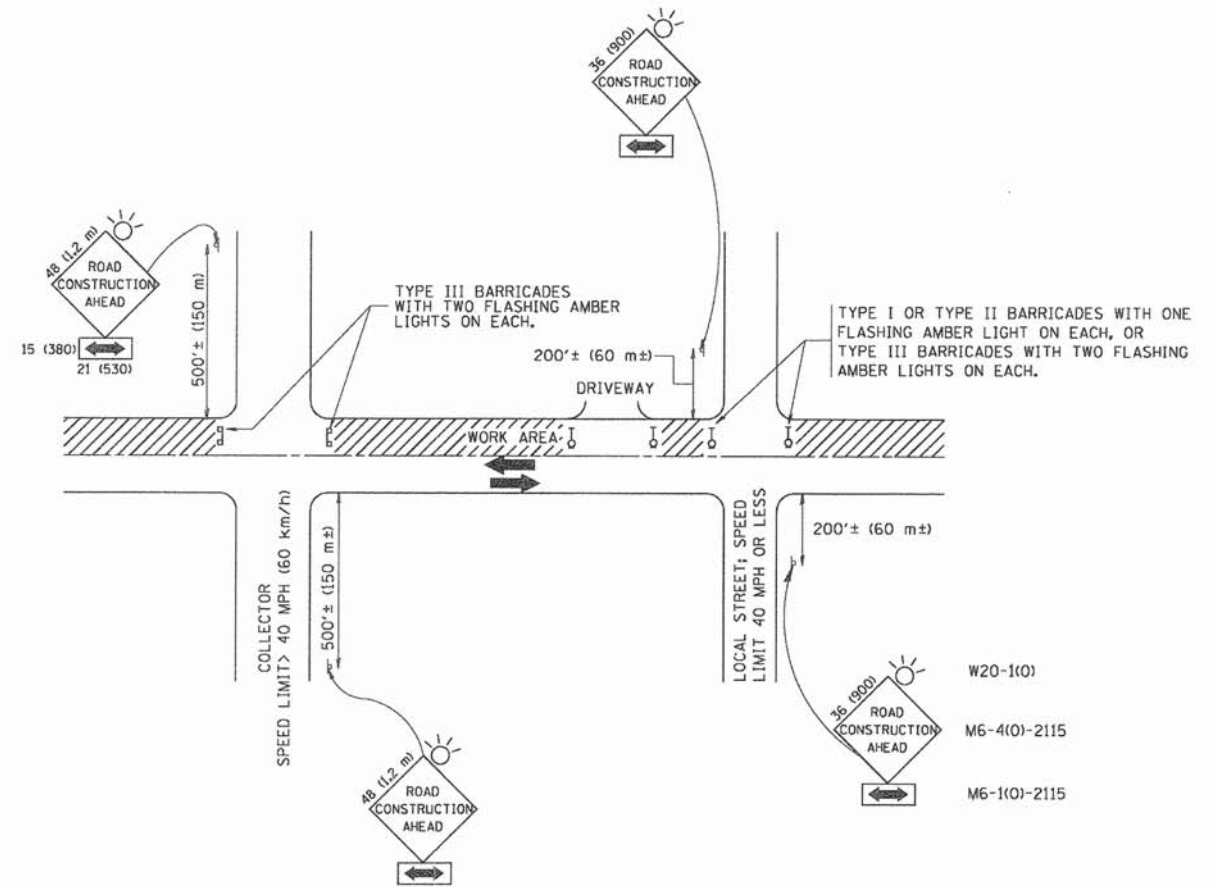
GRAPHIC SCALE



(IN FEET)
1 inch = 20 ft.



FILE NAME = 4478.002-PR3.dwg	USER NAME = GEORGE WHITTEN	DESIGNED - JRB	REVISED - -	STATE OF ILLINOIS DEPARTMENT OF TRANSPORTATION	SIGNAGE AND PAVEMENT MARKING PLAN			FA-RTE	SECTION	COUNTY	TOTAL SHEETS	SHEET NO.
	PLOT SCALE = -	DRAWN - GHA	REVISED - -					2774	11-00033-00-SW	LAKE	21	16
	PLOT DATE = 01.22.15	CHECKED - DPB	REVISED - -					CONTRACT #: 61B74				
	DATE - 01.22.15	REVISED - -			SCALE NONE	SHEET NO. 1 OF 1 SHEETS	STA.	TO STA.	ILLINOIS FED. AID PROJECT			



TRAFFIC CONTROL AND PROTECTION FOR SIDE ROADS, INTERSECTIONS, AND DRIVEWAYS

NOTES:

A. FOR NO LANE RESTRICTION ON THE SIDE ROAD OR DRIVEWAYS

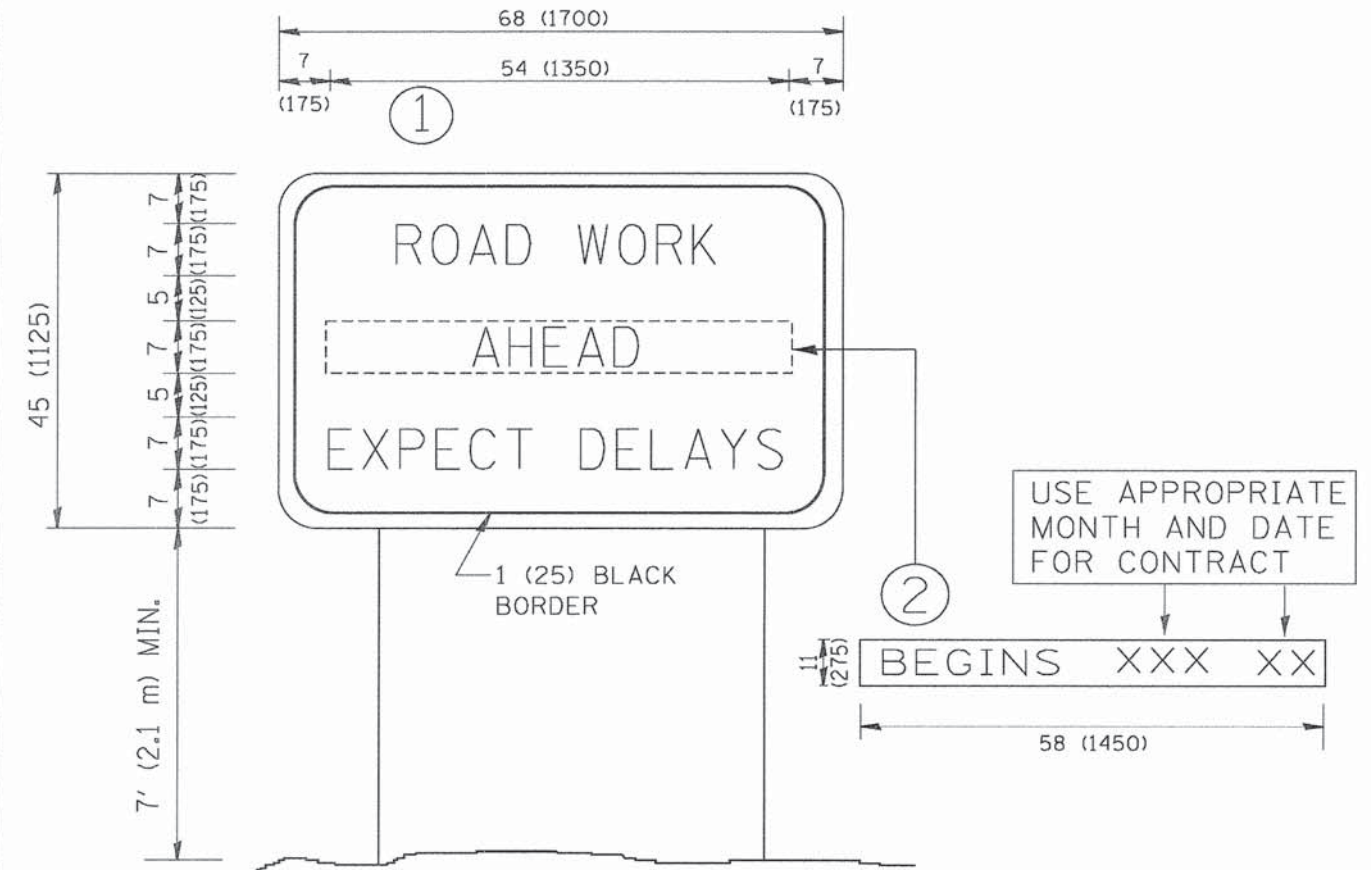
1. SIDE ROAD WITH A SPEED LIMIT OF 40 MPH (60 km/h) OR LESS AS SHOWN ON THE DRAWING AND AS DIRECTED BY THE ENGINEER:
 - a) ONE ROAD CONSTRUCTION AHEAD SIGN 36 x 36 (900x900) WITH A FLASHER AND FLAG MOUNTED ON IT APPROXIMATELY 200' (60 m) IN ADVANCE OF THE MAIN ROUTE.
 - b) THE CLOSED PORTION OF THE MAIN ROUTE SHALL BE PROTECTED BY BLOCKING WITH TYPE I, TYPE II OR TYPE III BARRICADES, 1/3 OF THE CROSS SECTION OF THE CLOSED PORTION.
2. SIDE ROAD WITH A SPEED LIMIT GREATER THAN 40 MPH (60 km/h) AS SHOWN ON THE DRAWING AND AS DIRECTED BY THE ENGINEER:
 - a) ONE ROAD CONSTRUCTION AHEAD SIGN 48 x 48 (1.2 m x 1.2 m) WITH A FLASHER MOUNTED ON IT APPROXIMATELY 500' (150 m) IN ADVANCE OF THE MAIN ROUTE.
 - b) THE CLOSED PORTION OF THE MAIN ROUTE SHALL BE PROTECTED BY BLOCKING WITH TYPE III BARRICADES, 1/2 OF THE CROSS SECTION OF THE CLOSED PORTION.
3. WHEN THE SIDE ROAD LIES BETWEEN THE BEGINNING OF THE MAINLINE SIGNING AND THE WORK ZONE, A SINGLE HEADED ARROW (M6-1) SHALL BE USED IN LIEU OF THE DOUBLE HEADED ARROW (M6-4).

B. FOR A LANE CLOSURE ON A SIDE ROAD OR DRIVEWAY:

- USE APPLICABLE PORTIONS OF THE TYPICAL APPLICATION OF TRAFFIC CONTROL DEVICES (STD. 70150L, STD. 701606 OR THE APPROPRIATE STANDARD). THE SPACING OF SIGNS AND BARRICADES SHALL BE ADJUSTED FOR FIELD CONDITIONS AS DIRECTED BY THE ENGINEER. THE DIRECTIONAL ARROW SHALL BE COVERED OR REMOVED WHEN NO LONGER CONSISTENT WITH THE SIDE ROAD LANE CLOSURE.
- C. ADVANCE WARNING SIGNS ARE TO BE OMITTED ON DRIVEWAY UNLESS OTHERWISE NOTED.
 - D. THE TRAFFIC CONTROL AND PROTECTION FOR SIDE ROADS, INTERSECTIONS, AND DRIVEWAYS SHALL BE INCIDENTAL TO THE COST OF SPECIFIED TRAFFIC CONTROL STANDARDS OR ITEMS.

All dimensions are in millimeters (inches) unless otherwise shown.

FILE NAME = 4478.002-PR3.dwg	USER NAME = GEORGE WHITTEN	DESIGNED - JRB	REVISED - -	STATE OF ILLINOIS DEPARTMENT OF TRANSPORTATION	DISTRICT ONE STANDARDS			FA-14 RTE.	SECTION	COUNTY	TOTAL SHEETS	SHEET NO.
	PLOT SCALE = -	DRAWN - GHA	REVISED - -					2774	11-00033-00-SW	LAKE	21	17
PLOT DATE = 01.22.15	CHECKED - DPB	DATE - 01.22.15	REVISED - -	SCALE NONE	SHEET NO. 1 OF 1 SHEETS	STA.	TO STA.	CONTRACT #: 61B74 ILLINOIS FED. AID PROJECT				

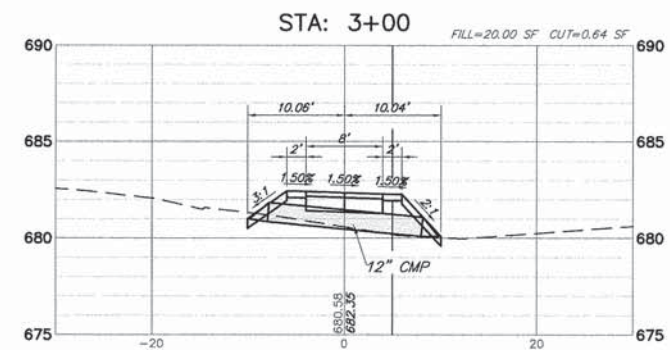
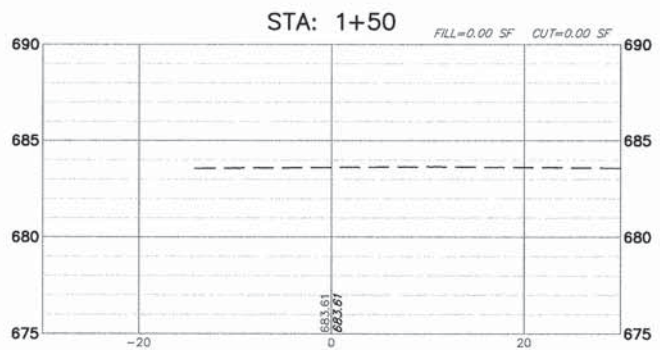
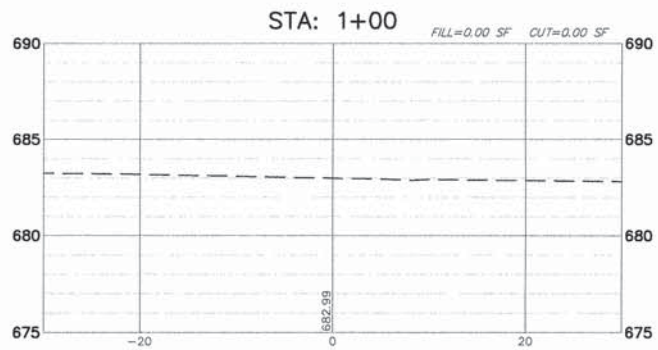
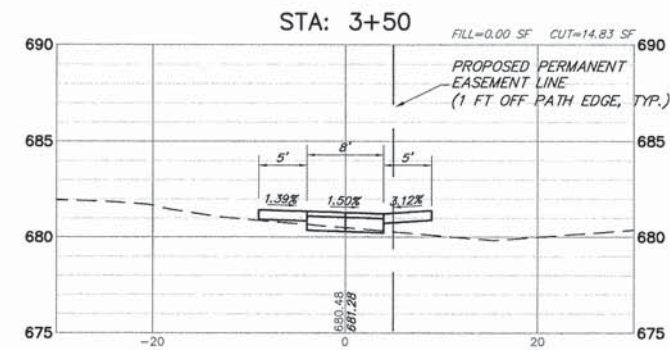
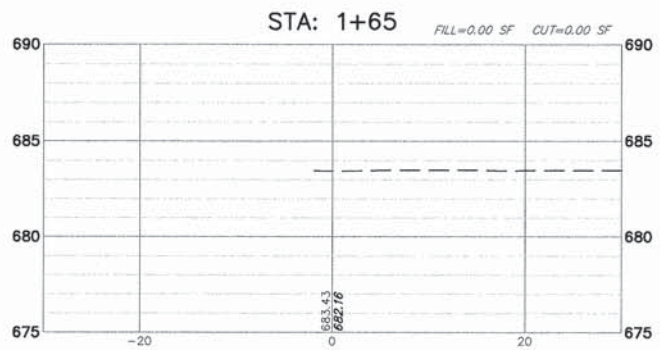
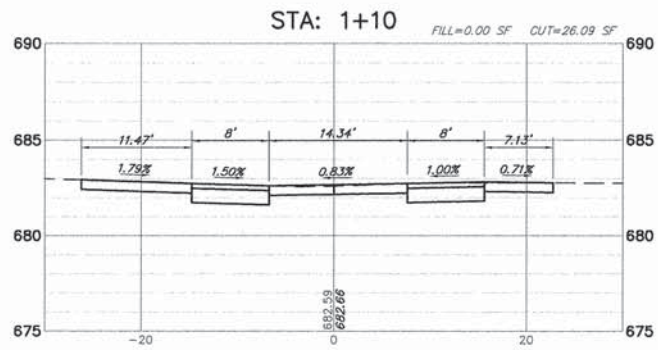
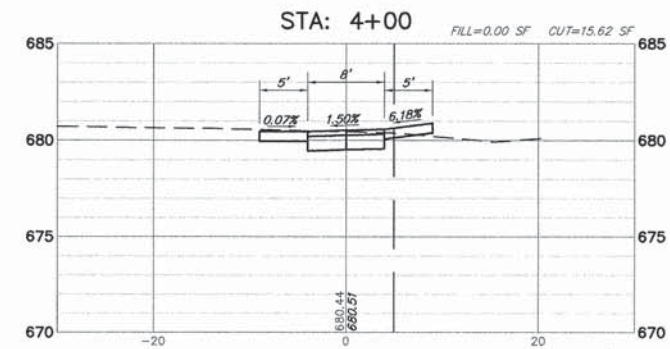
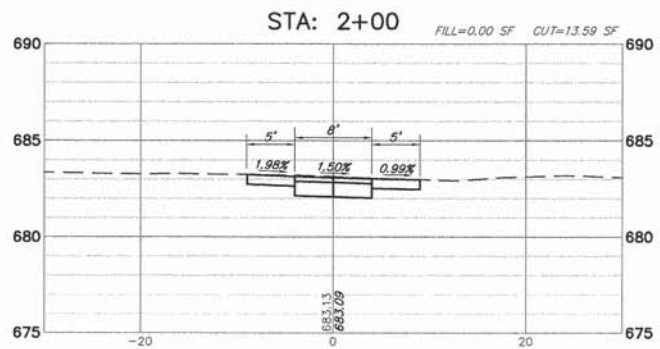
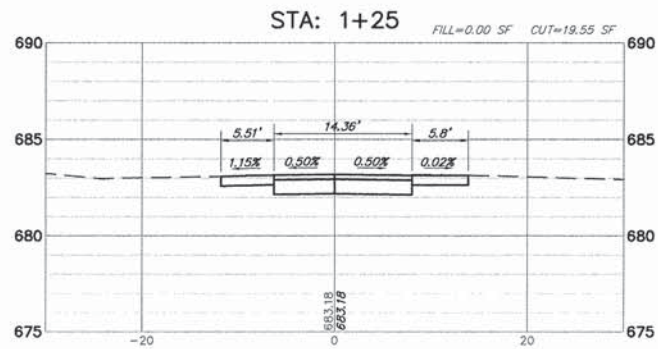
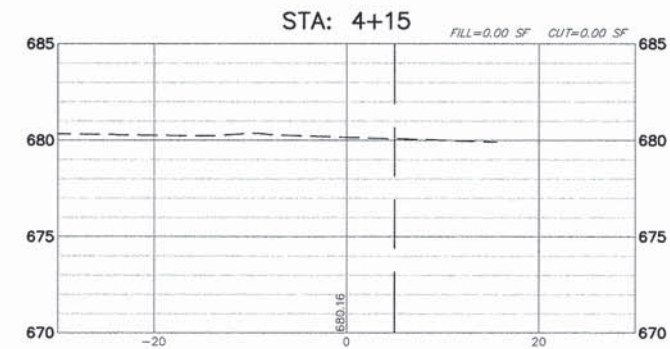
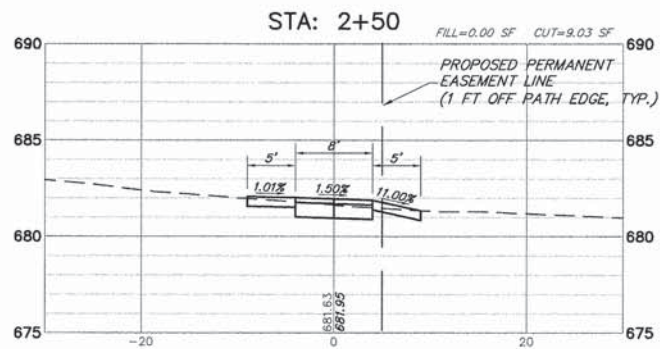
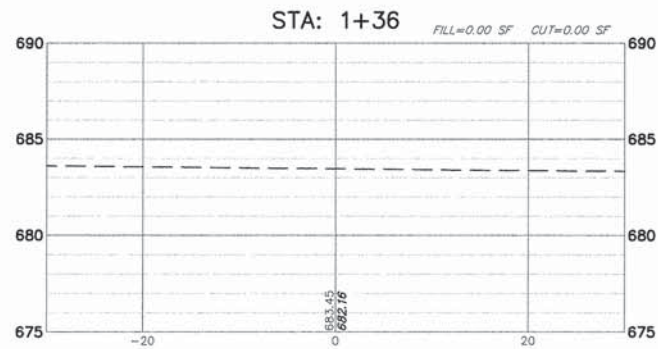
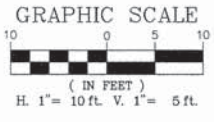


NOTES:

1. USE BLACK LETTERING ON ORANGE BACKGROUND.
2. ERECT SIGNS IN ADVANCE OF THE LOCATION FOR THE "ROAD CONSTRUCTION AHEAD" SIGN AT LOCATIONS AS DIRECTED BY THE ENGINEER.
3. ERECT SIGN ① WITH INSTALLED PANEL ② ONE WEEK PRIOR TO THE START OF CONSTRUCTION.
4. REMOVE PANEL ② SOON AFTER THE START OF CONSTRUCTION.
5. SEE SPECIAL PROVISION FOR "TEMPORARY INFORMATION SIGNING" FOR ADDITIONAL INFORMATION.
6. ONE SIGN ASSEMBLY EQUALS 25.70 SQ. FT. (2.3 SQ. M.)
7. SHALL BE PAID FOR AS TEMPORARY INFORMATION SIGNING.

ALL DIMENSIONS ARE IN INCHES (MILLIMETERS) UNLESS OTHERWISE SHOWN.

FILE NAME = 4478.002-PR3.dwg	USER NAME = GEORGE WHITTEN	DESIGNED - JRB	REVISED - -	STATE OF ILLINOIS DEPARTMENT OF TRANSPORTATION	DISTRICT ONE STANDARDS			FA-11 RTE	SECTION	COUNTY	TOTAL SHEETS	SHEET NO.	
		DRAWN - GHA	REVISED - -		SCALE NONE	SHEET NO. 1 OF 1 SHEETS	STA.	TO STA.	2774	11-00033-00-SW	LAKE	21	19
		CHECKED - DPB	REVISED - -										
		DATE - 01.22.15	REVISED - -										
ILLINOIS FED. AID PROJECT													

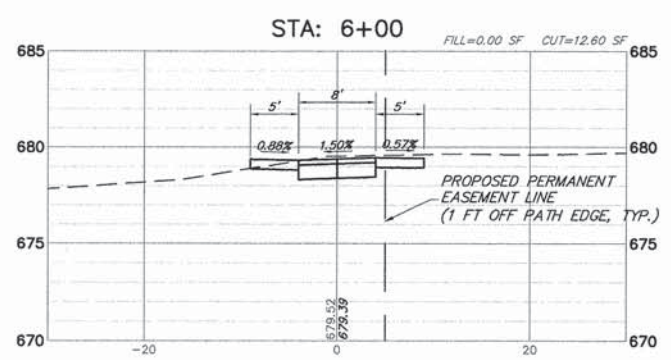
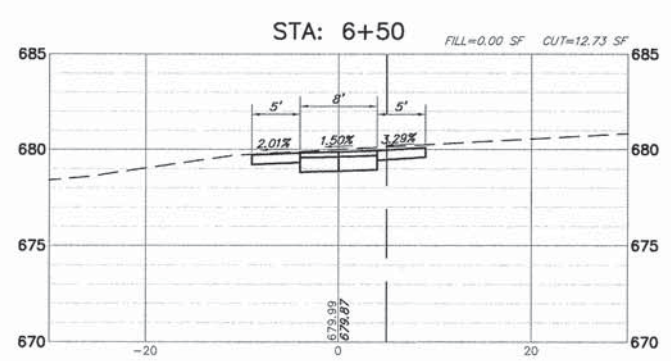
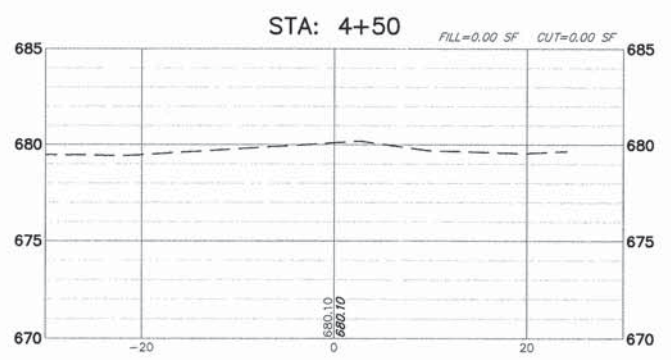
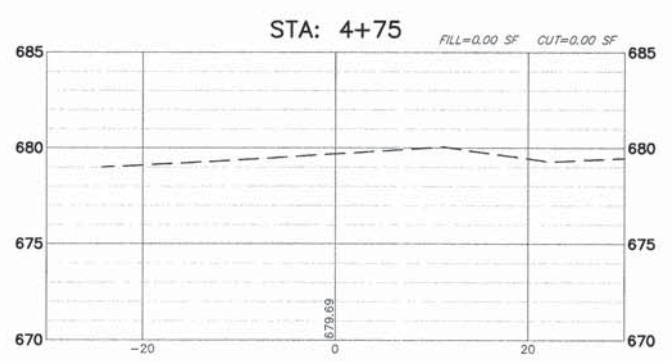
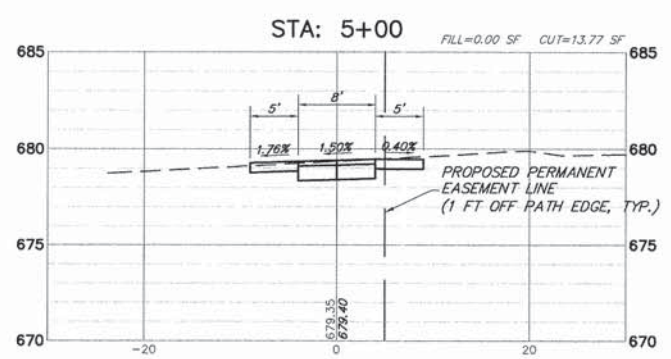
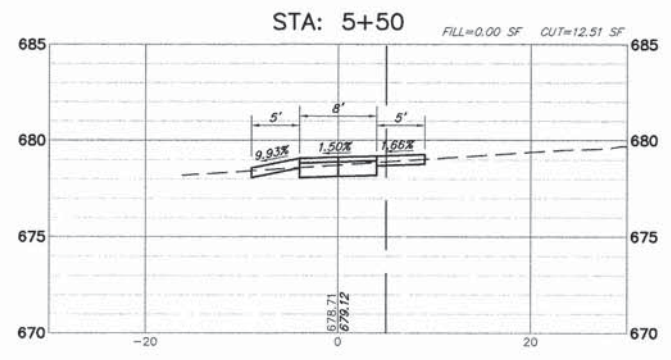


FILE NAME = 4478.002-PR3.dwg	USER NAME = GEORGE WHITTEN	DESIGNED - JRB	REVISED - -	STATE OF ILLINOIS DEPARTMENT OF TRANSPORTATION	CROSS SECTIONS STA. 1+00 TO STA. 4+15			FA-U RTE	SECTION	COUNTY	TOTAL SHEETS	SHEET NO.
	PLOT SCALE = -	DRAWN - GHA	REVISED - -					2774	11-00033-00-SW	LAKE	21	20
	PLOT DATE = 01.22.15	CHECKED - DPB	REVISED - -		SCALE NONE	SHEET NO. 1 OF 2 SHEETS	STA.	TO STA.	CONTRACT #: 61B74 ILLINOIS FED. AID PROJECT			
		DATE - 01.22.15	REVISED - -									

GRAPHIC SCALE



(IN FEET)
H. 1" = 10 ft. V. 1" = 5 ft.



Total Volume Table						
Station	Fill Area	Cut Area	Fill Volume	Cut Volume	Cumulative Fill Vol	Cumulative Cut Vol
1+00.00	0.00	0.00	0.00	0.00	0.00	0.00
1+10.00	0.00	26.09	0.00	4.83	0.00	4.83
1+25.00	0.00	19.55	0.00	12.68	0.00	17.51
1+36.00	0.00	0.00	0.00	3.98	0.00	21.49
1+50.00	0.00	0.00	0.00	0.00	0.00	21.49
1+65.00	0.00	0.00	0.00	0.00	0.00	21.49
2+00.00	0.00	13.59	0.00	8.81	0.00	30.30
2+50.00	0.00	8.98	0.00	20.90	0.00	51.20
3+00.00	16.44	1.09	15.22	9.32	15.22	60.52
3+50.00	7.26	1.59	21.79	2.49	37.00	63.01
4+00.00	0.15	10.85	6.71	11.57	43.71	74.58
4+15.00	0.00	0.00	0.04	3.01	43.75	77.60
4+50.00	0.00	0.00	0.00	0.00	43.75	77.60
4+75.00	0.00	0.00	0.00	0.00	43.75	77.60
5+00.00	0.00	12.30	0.00	5.69	43.75	83.29
5+50.00	0.00	6.79	0.00	17.67	43.75	100.96
6+00.00	0.00	13.28	0.00	18.43	43.75	119.40
6+50.00	0.00	15.01	0.00	26.28	43.75	145.68

FILE NAME = 4478.002-PR3.dwg

USER NAME = GEORGE WHITTEN
PLOT SCALE = --
PLOT DATE = 01.22.15

DESIGNED - JRB
DRAWN - GHA
CHECKED - DPB
DATE - 01.22.15

REVISED - --
REVISED - --
REVISED - --
REVISED - --

STATE OF ILLINOIS
DEPARTMENT OF TRANSPORTATION

CROSS SECTIONS STA. 4+50 TO STA. 6+50
SCALE NONE SHEET NO. 2 OF 2 SHEETS STA. TO STA.

FA. RTE.	SECTION	COUNTY	TOTAL SHEETS	SHEET NO.
2774	11-00033-00-SW	LAKE	21	21
CONTRACT # 61B74				
ILLINOIS FED. AID PROJECT				