

STATE OF ILLINOIS

PLANS FOR PROPOSED 1200th RD (HIGH SCHOOL RD) and US ROUTE 150 / IL ROUTE 1 INTERSECTION

PROJECT NUMBER: M-5054 (010)
JOB NUMBER: C-95-324-15
SECTION NUMBER: 14-00070-00-SP
STU / MFT FUNDS

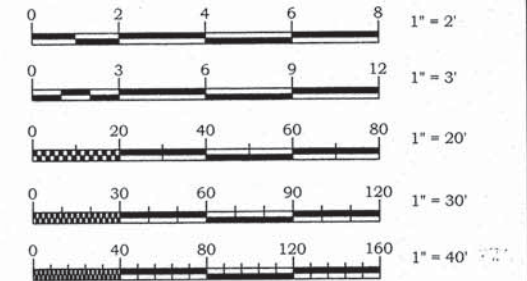
1200th RD (HIGH SCHOOL RD) and
US ROUTE 150 / IL ROUTE 1 INTERSECTION
CITY OF PARIS - ILLINOIS - EDGAR COUNTY
PROJECT NUMBER: M-5054 (010)
JOB NUMBER: C-95-324-15
SECTION NUMBER: 14-00070-00-SP
CONTRACT NUMBER: 91534
SHEET 1 OF 20

INDEX OF SHEETS

- 1 TITLE SHEET
- 2 GENERAL NOTES, SUMMARY OF QUANTITIES, AND STORM SEWER TABLES
- 3 EXISTING & PROPOSED TYPICAL CROSS SECTIONS
- 4 PHASE I TEMPORARY STRIPING PLAN
- 5 PHASE II TEMPORARY STRIPING PLAN
- 6-8 PLAN AND PROFILE
- 9-10 STRIPING PLAN
- 11-14 CROSS-SECTIONS
- SWPPP ROADWAY - EROSION CONTROL PLAN
16-20 DISTRICT STANDARDS

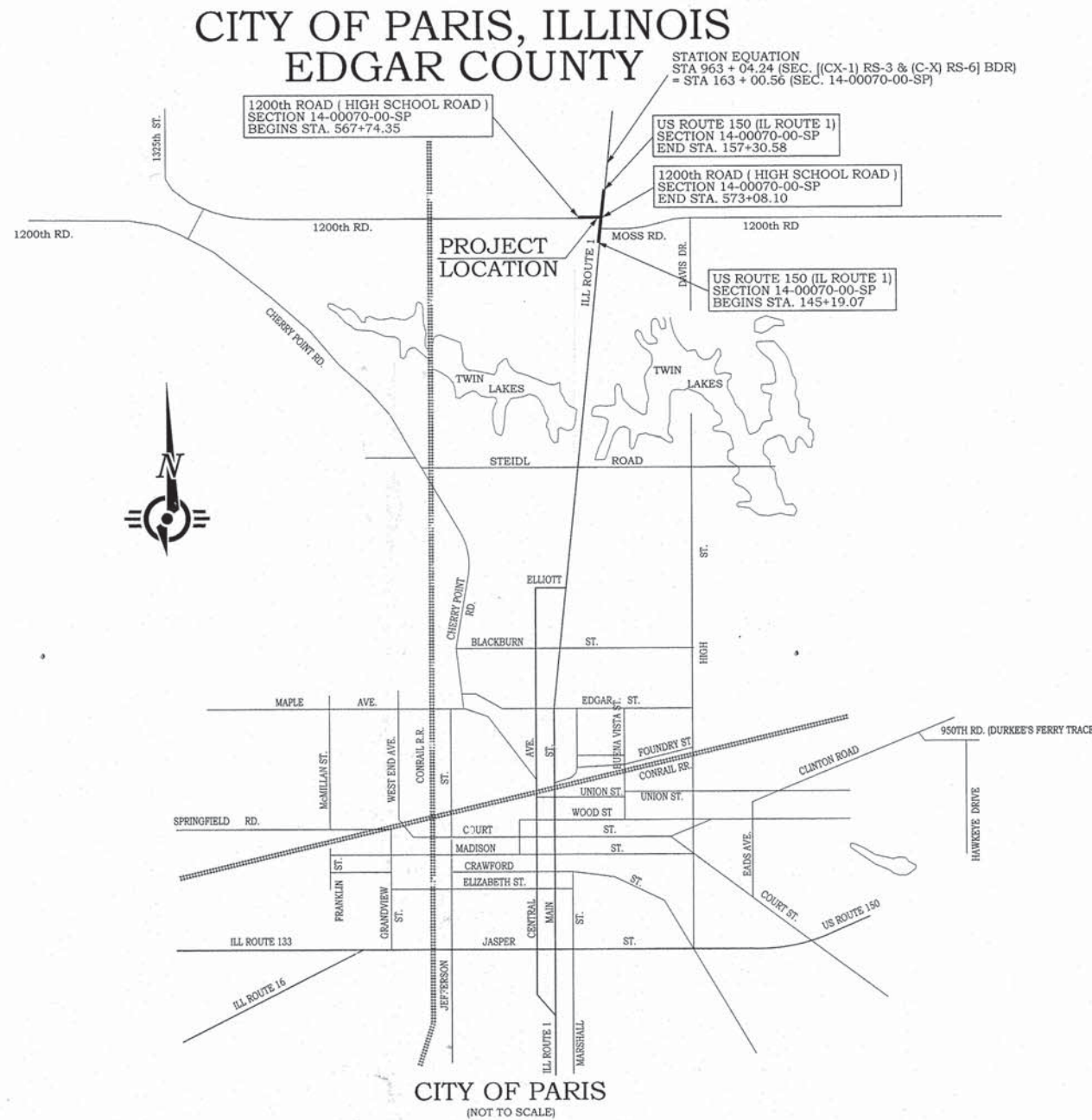


SECTION 24 SE 1/4, T. 14 N., R. 12 W., 2ND P.M.
SECTION 25 NE 1/4, T. 14 N., R. 12 W., 2ND P.M.
CITY OF PARIS, EDGAR COUNTY, ILLINOIS



FULL SIZE PLANS HAVE BEEN PREPARED USING STANDARD ENGINEERING SCALES, REDUCED SIZED PLANS MAY NOT CONFORM TO STANDARD SCALES, IN MAKING MEASUREMENTS ON REDUCED PLANS, THE ABOVE SCALES MAY BE USED.

ILLINOIS HIGHWAY STANDARDS	
000001-06	STANDARD SYMBOLS, ABBREVIATIONS AND PATTERNS
001006	DECIMAL OF AN INCH AND OF A FOOT
280001-07	TEMPORARY EROSION CONTROL SYSTEMS
420001-08	PAVEMENT JOINTS
542301-03	PRECAST REINFORCED CONCRETE FLARED END SECTION
602301-04	INLET - TYPE A
602401-03	MANHOLE TYPE A
602601-04	PRECAST REINFORCED CONCRETE FLAT SLAB TOP
602701-02	MANHOLE STEPS
604001-04	FRAME AND LIDS TYPE 1
604006-05	FRAME AND GRATE TYPE 3
606001-06	CONCRETE CURB TYPE B AND COMBINATION CONCRETE CURB AND GUTTER
606301-04	PC CONCRETE ISLANDS AND MEDIANS
642006	SHOULDER RUMBLE STRIPS, 8 in.
666001-01	RIGHT OF WAY MARKERS
701301-04	LANE CLOSURE, 2L, 2W, SHORT TIME OPERATIONS
701306-03	LANE CLOSURE, 2L, 2W, SLOW MOVING OPERATIONS DAY ONLY, FOR SPEEDS > 45 MPH
701326-04	LANE CLOSURE, 2L, 2W, PAVEMENT WIDENING, FOR SPEEDS > 45 MPH
701901-05	TRAFFIC CONTROL DEVICES
720001-01	SIGN PANEL MOUNTING DETAILS
720006-04	SIGN PANEL ERECTION DETAILS
728001-01	TELESCOPING STEEL SIGN SUPPORT
729001-01	APPLICATIONS OF TYPES A & B METAL POSTS (FOR SIGNS & MARKERS)
780001-05	TYPICAL PAVEMENT MARKINGS
781001-04	TYPICAL APPLICATIONS RAISED REFLECTIVE PAVEMENT MARKERS
B.L.R. 22-7	TYPICAL APPLICATION OF TRAFFIC CONTROL DEVICES FOR CONSTRUCTION ON RURAL LOCAL HIGHWAYS (TWO-LANE TWO WAY RURAL TRAFFIC) (ROAD CLOSED TO THRU TRAFFIC)
D-5 40800050A	FIELD ENTRANCES (NONCOMMERCIAL RURAL)
D-5 40800050C	PRIVATE AND COMMERCIAL ENTRANCES (NONCOMMERCIAL AND COMMERCIAL RURAL)
D-5 60600095A	INLET - COMBINATION CONCRETE CURB & GUTTER (BARRIER CURB)



CITY OF PARIS
(NOT TO SCALE)
LOCATION MAP

TOTAL LENGTH
1200th ROAD = 533.74 LIN. FT. = 0.101 MILES
US ROUTE 150 = 1,211.51 LIN. FT. = 0.229 MILES
NET LENGTH OF PROJECT
1200th ROAD = 533.74 LIN. FT. = 0.101 MILES
US ROUTE 150 = 1,211.51 LIN. FT. = 0.229 MILES

1200th RD (HIGH SCHOOL ROAD)
FUNCTIONAL CLASSIFICATION -
TRAFFIC COUNT
MINOR COLLECTOR
EX. 1,100 ADT (2015)
PROP. 1,250 ADT (2035)

US ROUTE 150 / ROUTE 1
FUNCTIONAL CLASSIFICATION -
TRAFFIC COUNT
PRINCIPAL ARTERIAL
EX. 4,200 ADT (2015)
PROP. 4,600 ADT (2035)



PREPARED BY,
FRANCIS ASSOCIATES
CONSULTING ENGINEERS
LAND SURVEYORS
330 NORTH CENTRAL AVENUE
PARIS, ILLINOIS 61944
217-465-5306



PROFESSIONAL DESIGN FIRM #184-001406

Louis R. Curl 1/25/16
LOUIS R. CURL DATE
ILLINOIS PROFESSIONAL ENGINEER NO. 38867
EXP. 11/30/17

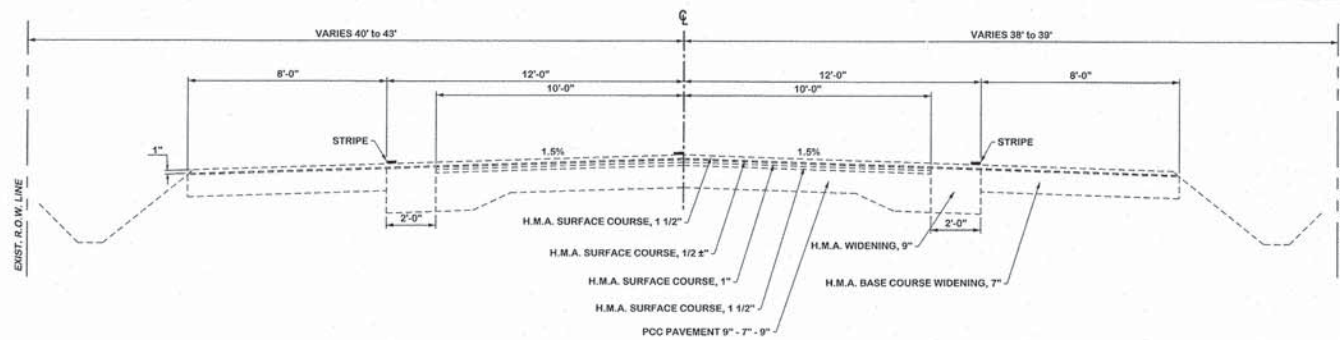


APPROVED: *[Signature]* 2/9 20 16
MAYOR

PASSED: *[Signature]* 20 16
DISTRICT FIVE ENGINEER OF LOCAL ROADS AND STREETS

Releasing For Bid Based on Limited Review *[Signature]* 20 16
DEPUTY DIRECTOR OF HIGHWAYS, REGION THREE ENGINEER

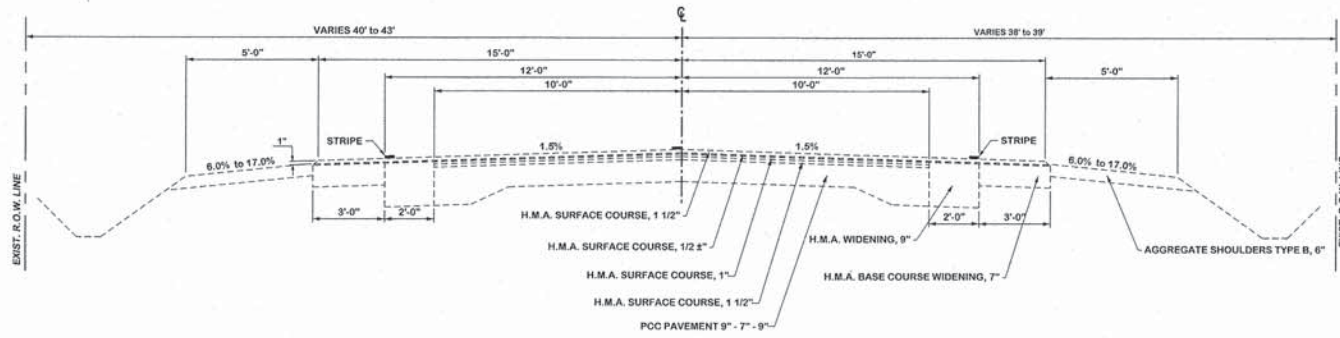
STATE OF ILLINOIS
DEPARTMENT OF TRANSPORTATION



EXISTING TYPICAL SECTION #1

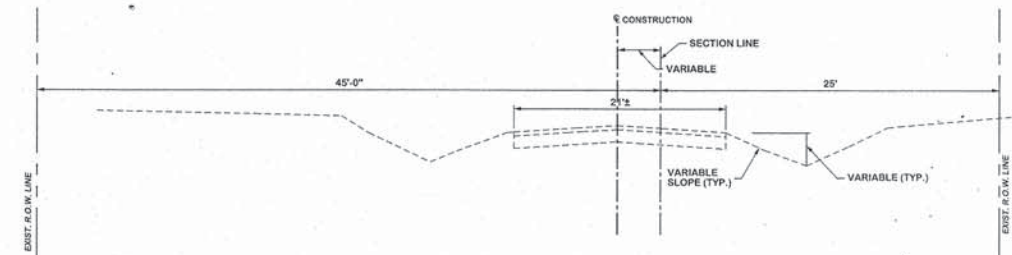
STA. 145+19.07 to 147+50
 F.A.P. ROUTE 332 (US 150 / IL 1)

**TRANSITION FROM EXISTING TYPICAL SECTION #1 TO SECTION #2
 AT LT STA. 147+50 TO LT STA. 149+00 AND RT STA. 147+50 TO RT STA. 149+50**



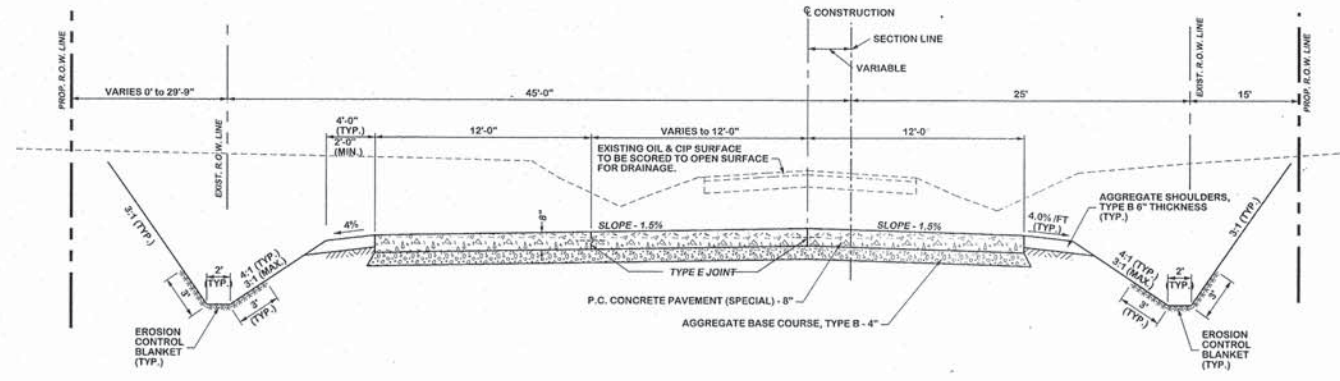
EXISTING TYPICAL SECTION #2

LT STA. 149+00 / RT STA. 149+50 to 157+30.58
 F.A.P. ROUTE 332 (US 150 / IL 1)



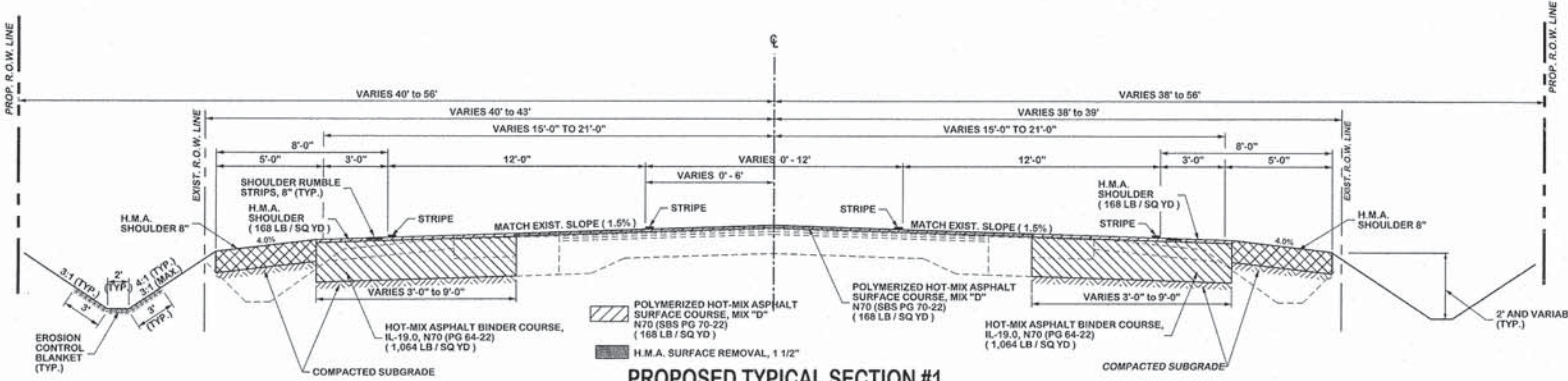
EXISTING TYPICAL SECTION

1200TH RD (HIGH SCHOOL RD)



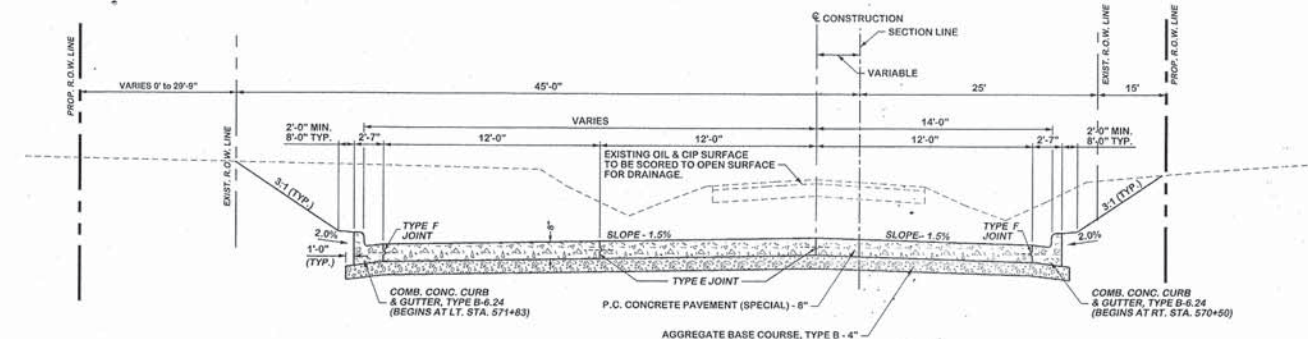
PROPOSED TYPICAL SECTION

STA. 567+99.35 to 571+60.0
 1200th RD (HIGH SCHOOL RD)



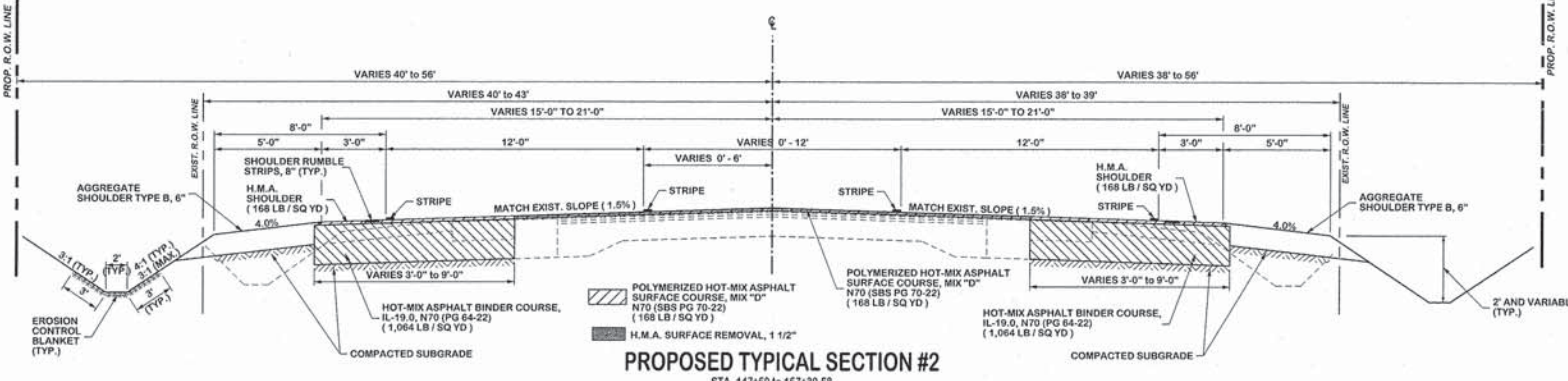
PROPOSED TYPICAL SECTION #1

STA. 145+19.07 to 147+50
 F.A.P. ROUTE 332 (US 150 / IL 1)



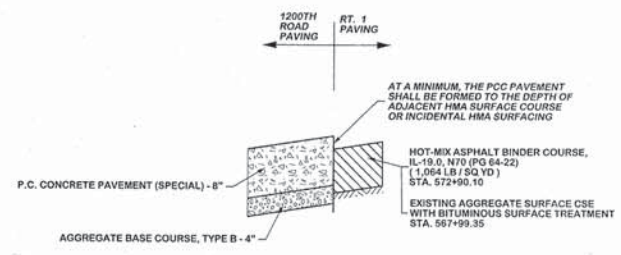
PROPOSED TYPICAL SECTION

STA. 571+60.0 to 572+90.10
 1200th RD (HIGH SCHOOL RD)



PROPOSED TYPICAL SECTION #2

STA. 147+50 to 157+30.58
 F.A.P. ROUTE 332 (US 150 / IL 1)



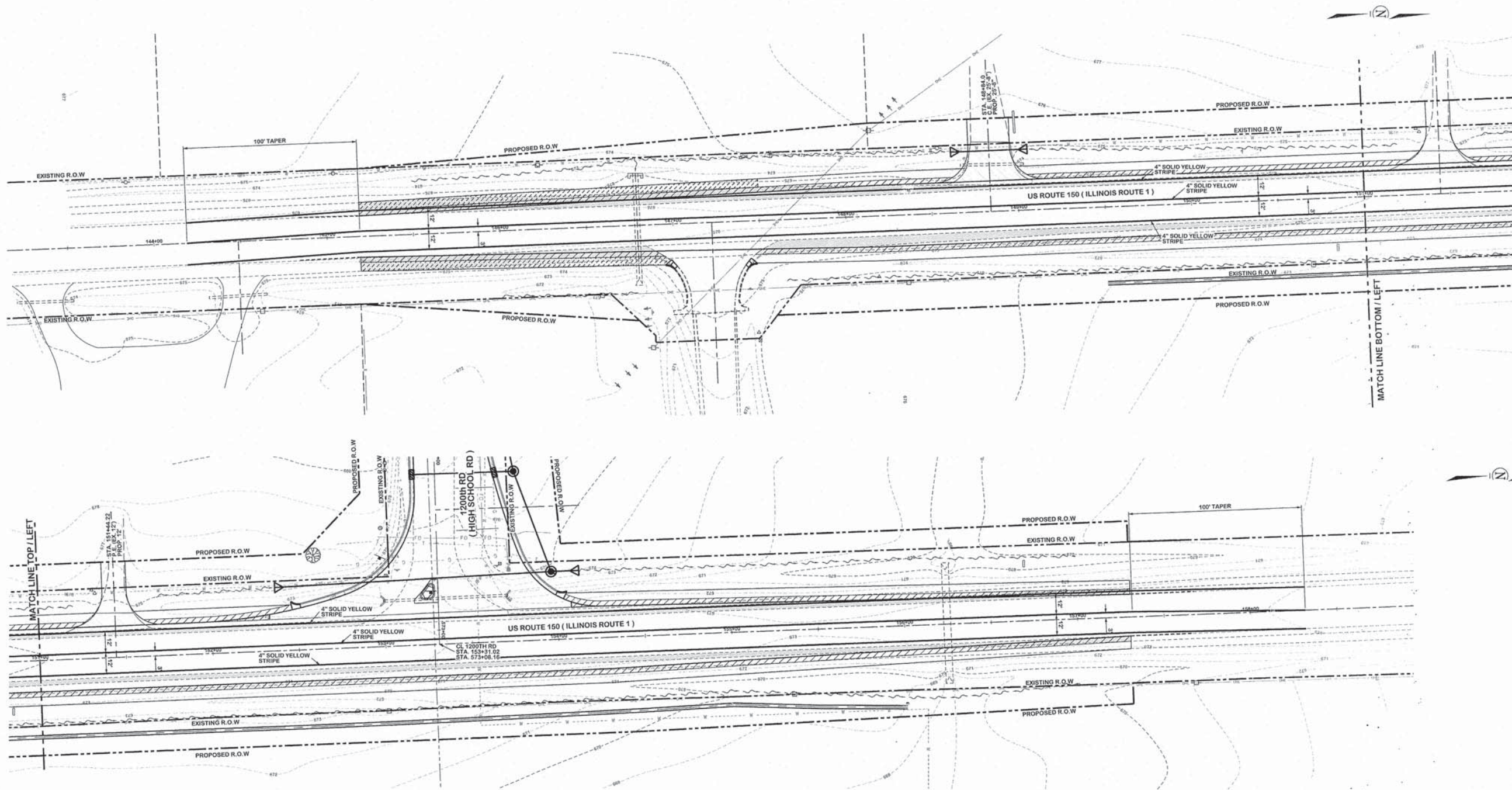
1200TH ROAD ADJACENT PAVING DETAIL

FRANCIS ASSOCIATES
 CONSULTING ENGINEERS
 LAND SURVEYORS
 330 NORTH CENTRAL AVENUE
 PARIS, ILLINOIS 61944
 PH. (217) 465-5306
 PROFESSIONAL DESIGN FIRM #184-001406

SCALES	DRAWN: TLT
PLAN: N/A	DATE: 1/25/16
REVISIONS	CHECKED: _____
REVISION DATE	DATE: _____
REVISION DATE	DATE: _____
REVISION DATE	DATE: _____

FRANCIS ASSOC. FILE NO. **P-477-3**

**EXISTING & PROPOSED TYPICAL CROSS SECTIONS,
 1200th RD (HIGH SCHOOL RD) and US ROUTE 150 / IL ROUTE 1 INTERSECTION
 CITY OF PARIS - ILLINOIS - EDGAR COUNTY**



78300100	PAVEMENT MARKING REMOVAL	
LT/RT STA. 144+19 TO STA. 158+31	853 SQ FT	
SHEET TOTAL =	853 SQ FT	

70300240	TEMPORARY PAVEMENT MARKING - LINE 4"	
LT/RT STA. 144+19 TO STA. 158+31	4,238 FOOT	
SHEET TOTAL =	4,238 FOOT	

PAVED SHOULDER REMOVAL	
HOT-MIX ASPHALT SHOULDERS, 1 1/2"	
DRIVEWAY PAVEMENT REMOVAL	

P:\New Projects\477-3 1200th Rd and RTE 1\Phase1 Striping Plan Sheets.dgn

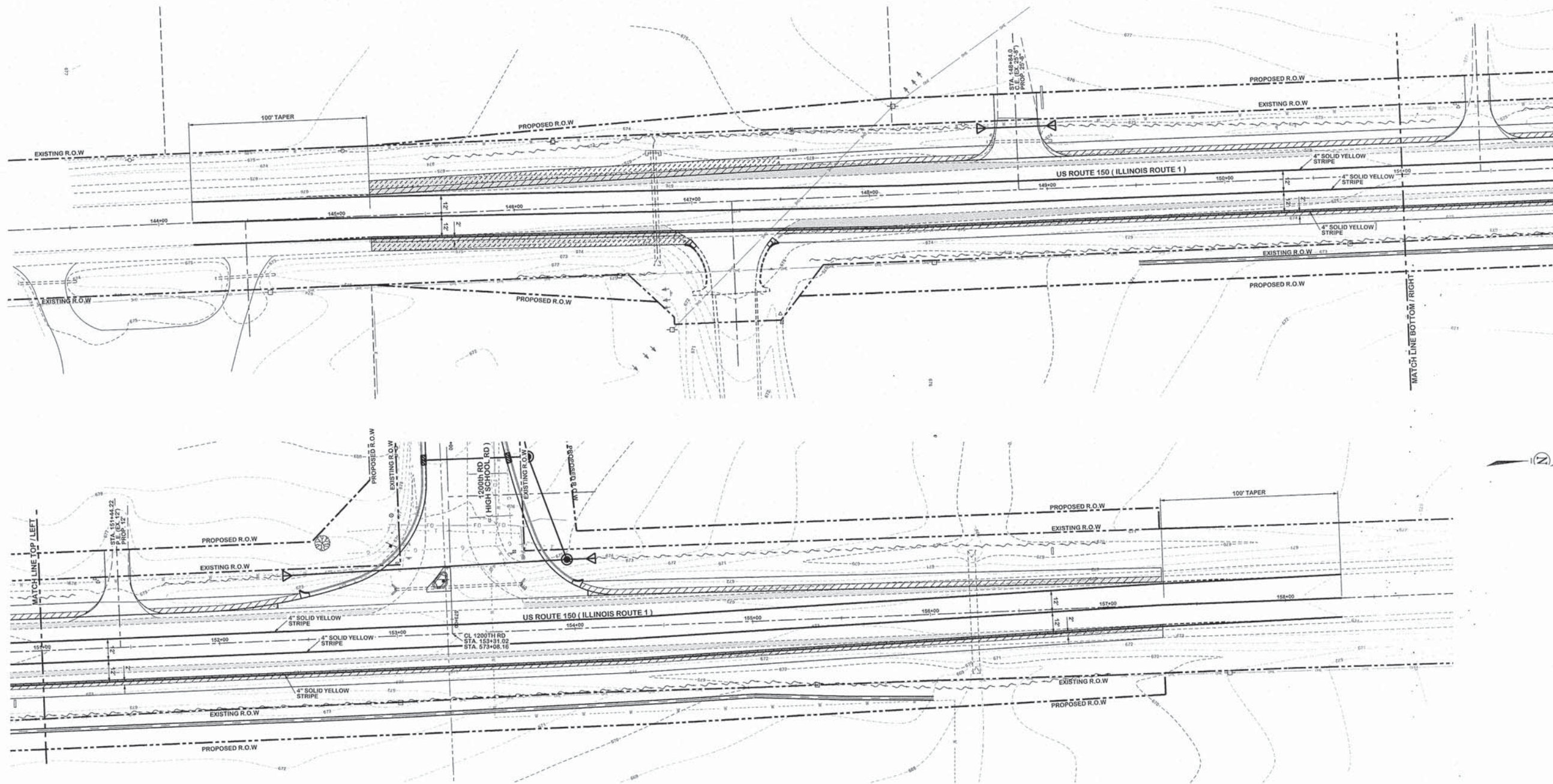
FRANCIS ASSOCIATES
 CONSULTING ENGINEERS
 LAND SURVEYORS
 330 NORTH CENTRAL AVENUE
 PARIS, ILLINOIS 61944
 PH. (217) 465-5306
 PROFESSIONAL DESIGN FIRM #184-001406



SCALES	DRAWN	TLT
PLAN : 1"=30'	DATE	1/25/16
REVISED	CHECKED	
DATE	DATE	
REVISED	APPROVED	
DATE	DATE	
REVISED	REVISED	
DATE	DATE	

FRANCIS ASSOC.
 FILE NO.
P-477-3

PHASE I TEMPORARY STRIPING PLAN - ILLINOIS ROUTE 1 (US ROUTE 150)
 1200th RD (HIGH SCHOOL RD) and US ROUTE 150 / IL ROUTE 1 INTERSECTION
 CITY OF PARIS - ILLINOIS - EDGAR COUNTY



70301000
 WORK ZONE PAVEMENT
 MARKING REMOVAL (FROM PHASE I)
 LT/RT STA. 144+19 TO STA. 158+31 1,412.5 SQ FT
 SHEET TOTAL = 1,412.5 SQ FT

70300240
 TEMPORARY PAVEMENT
 MARKING - LINE 4"
 LT/RT STA. 144+19 TO STA. 158+31 4,238 FOOT
 SHEET TOTAL = 4,238 FOOT

PAVED SHOULDER REMOVAL [Hatched Pattern]
 HOT-MIX ASPHALT SHOULDERS, 1 1/2" [Diagonal Line Pattern]
 DRIVEWAY PAVEMENT REMOVAL [Stippled Pattern]

P:\New Projects\VP-477-3 1200th Rd and RTE 1\Phase2 Stripping Plan Sheets.dgn

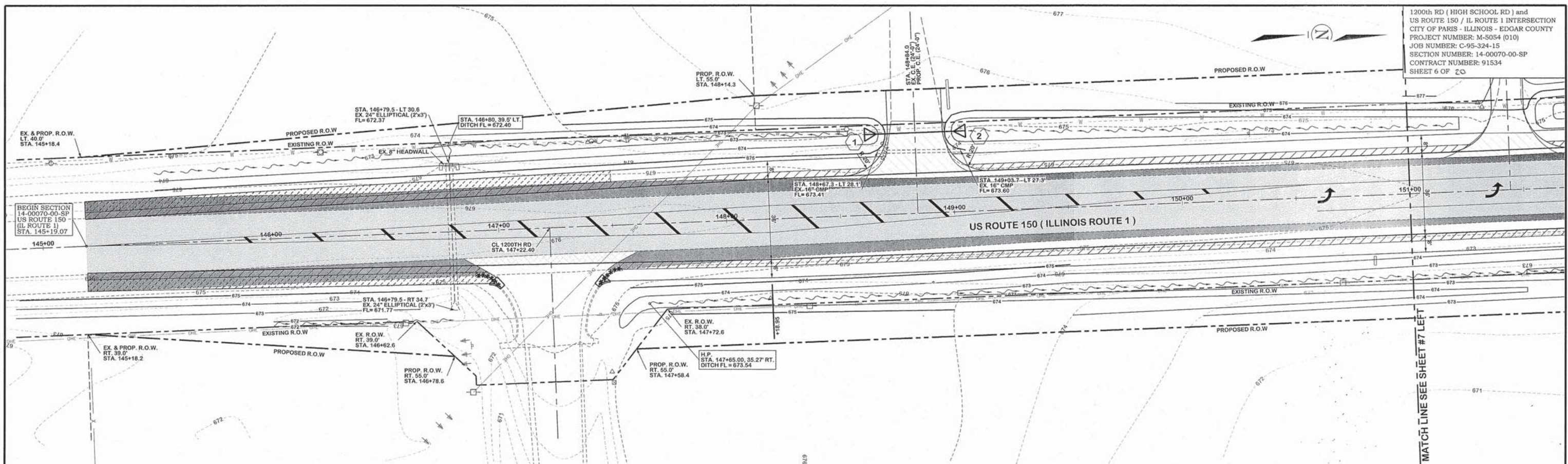
FRANCIS ASSOCIATES
 CONSULTING ENGINEERS
 LAND SURVEYORS
 330 NORTH CENTRAL AVENUE
 PARIS, ILLINOIS 61944
 PH. (217) 465-5306
 PROFESSIONAL DESIGN FIRM #184-001406



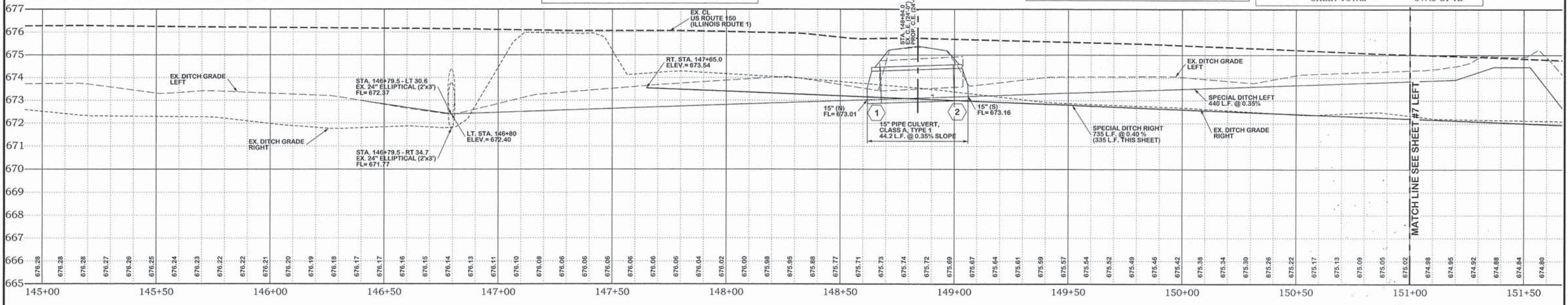
SCALES		DRAWN TLT
PLAN : 1"=30'		DATE 1/25/16
REVISION	DATE	CHECKED
REVISION	DATE	APPROVED
REVISION	DATE	DATE
REVISION	DATE	DATE

FRANCIS ASSOC.
 FILE NO.
P-477-3

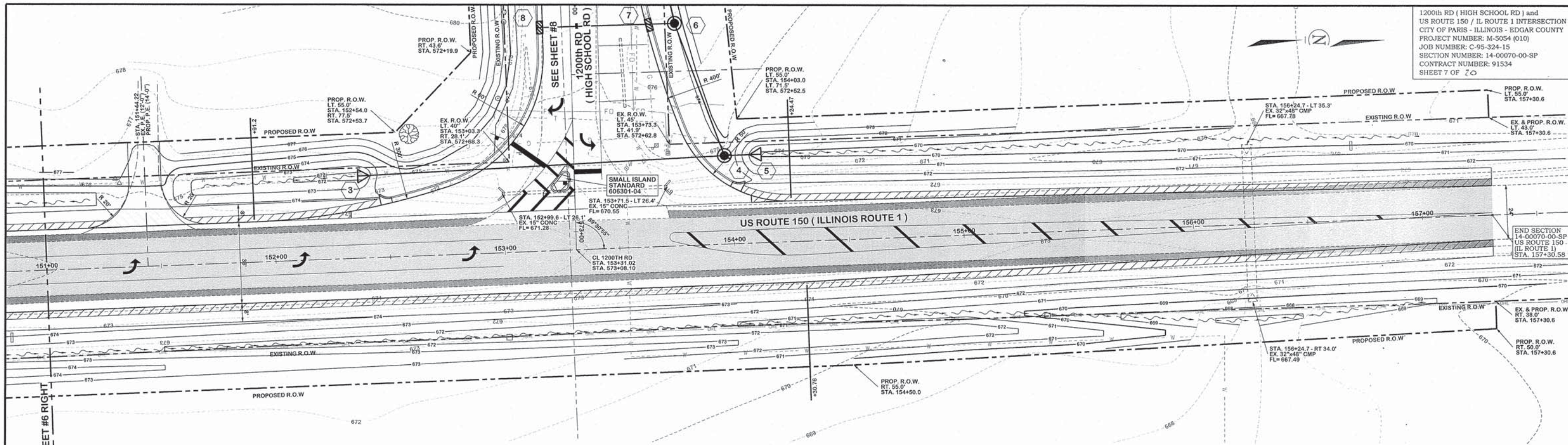
PHASE II TEMPORARY STRIPING PLAN - ILLINOIS ROUTE 1 (US ROUTE 150)
 1200th RD (HIGH SCHOOL RD) and US ROUTE 150 / IL ROUTE 1 INTERSECTION
 CITY OF PARIS - ILLINOIS - EDGAR COUNTY



<p>50105220 PIPE CULVERT REMOVAL LT STA. 148+67.3 TO STA. 149+03.7 36.0 FOOT SHEET TOTAL = 36.0 FOOT</p>	<p>XX006529 CURB AND GUTTER OUTLET, SPECIAL 26' RT STA. 146+99.7 1 EACH 27' RT STA. 147+43.2 1 EACH SHEET TOTAL = 2 EACH</p>	<p>40800050 INCIDENTAL HMA SURFACING LT STA. 148+84.0 15.0 TONS SHEET TOTAL = 15.0 TONS</p>	<p>44000155 HOT-MIX ASPHALT SURFACE REMOVAL, 1 1/2" min. STA. 145+19.07 TO STA. 151+00.0 2,123.9 SQ YD SHEET TOTAL = 2,123.9 SQ YD</p>	<p>48203003 HOT-MIX ASPHALT SHOULDERS, 1 1/2" LT STA. 145+19.07 TO STA. 148+62.5 117.1 SQ. YD. RT STA. 145+19.07 TO STA. 146+94.62 57.7 SQ. YD. RT STA. 147+47.02 TO STA. 151+00.0 113.5 SQ. YD. LT STA. 149+05.46 TO STA. 151+00.0 63.7 SQ. YD. SHEET TOTAL = 352.0 SQ. YD.</p>
<p>44000100 PAVEMENT REMOVAL RT STA. 146+84 TO STA. 147+61 32.0 SQ. YD. SHEET TOTAL = 32.0 SQ. YD.</p>	<p>44000500 COMBINATION CURB AND GUTTER REMOVAL ***** 20' RT STA. 146+88.9 TO 26' RT STA. 146+99.7 13.2 FOOT 27' RT STA. 147+43.2 TO 20' RT STA. 147+53.7 13.8 FOOT SHEET TOTAL = 27.0 FOOT</p>	<p>44000200 DRIVEWAY PAVEMENT REMOVAL LT STA. 148+84.0 83.4 SQ. YD. SHEET TOTAL = 83.4 SQ. YD.</p>	<p>48203029 HOT-MIX ASPHALT SHOULDERS, 8" RT STA. 145+19.07 TO STA. 146+94.62 98.6 SQ. YD. LT STA. 145+19.07 TO STA. 147+50.0 128.4 SQ. YD. SHEET TOTAL = 227.0 SQ. YD.</p>	<p>44004250 PAVED SHOULDER REMOVAL LT STA. 145+19.07 TO STA. 151+00.0 342.9 SQ YD RT STA. 145+19.07 TO STA. 146+94.62 142.2 SQ YD RT STA. 147+47.02 TO STA. 151+00.0 162.4 SQ YD SHEET TOTAL = 647.5 SY YD</p>



<p>FRANCIS ASSOCIATES CONSULTING ENGINEERS LAND SURVEYORS 330 NORTH CENTRAL AVENUE PARIS, ILLINOIS 61944 PH. (217) 465-5306 PROFESSIONAL DESIGN FIRM #184-001406</p>	<p>SCALES PLAN : HOR. 1"=20' VERT. 1"=2'</p>	<p>DRAWN TLF DATE 1/25/16 CHECKED _____ DATE _____ APPROVED _____ DATE _____ REVISOR _____ DATE _____</p>	<p>FRANCIS ASSOC. FILE NO. P-477-3</p>	<p>PLAN AND PROFILE - ILLINOIS ROUTE 1 (US ROUTE 150) 1200th RD (HIGH SCHOOL RD) and US ROUTE 150 / IL ROUTE 1 INTERSECTION CITY OF PARIS - ILLINOIS - EDGAR COUNTY</p>	<p>SHEET NO. 6 OF 20 SHEETS</p>
---	--	---	---	---	--



50105220
 PIPE CULVERT REMOVAL
 LT STA. 152+99.6 TO STA. 153+71.5 72.0 FOOT
 SHEET TOTAL = 72.0 FOOT

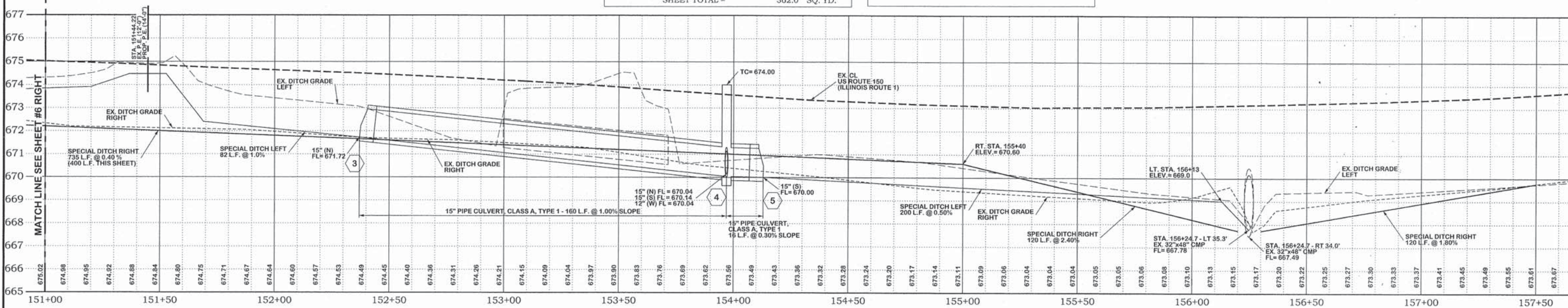
40800050
 INCIDENTAL HMA SURFACING
 LT. STA. 151+44.22 6.4 TONS
 SHEET TOTAL = 6.4 TONS

44000200
 DRIVEWAY PAVEMENT REMOVAL
 LT STA. 151+44.22 37.6 SQ. YD.
 SHEET TOTAL = 37.6 SQ. YD.

44000155
 HOT-MIX ASPHALT SURFACE
 REMOVAL, 1 1/2" min.
 STA. 151+00.0 TO STA. 157+30.58 2,322.5 SQ YD
 SHEET TOTAL = 2,322.5 SQ YD

48203003
 HOT-MIX ASPHALT SHOULDERS, 1 1/2"
 LT STA. 151+00.0 TO STA. 151+27.75 8.2 SQ. YD.
 LT STA. 151+60.68 TO STA. 152+46.78 32.3 SQ. YD.
 LT STA. 154+03.52 TO STA. 157+30.58 111.3 SQ. YD.
 RT STA. 151+00.0 TO STA. 157+30.58 210.3 SQ. YD.
 SHEET TOTAL = 362.0 SQ. YD.

44004250
 PAVED SHOULDER REMOVAL
 LT STA. 151+00.0 TO STA. 152+92.13 63.7 SQ YD
 RT STA. 151+00.0 TO STA. 157+30.58 198.4 SQ YD
 LT STA. 153+71.36 TO STA. 157+30.58 126.4 SQ YD
 SHEET TOTAL = 388.5 SY YD



P:\Mx Projects\477-3 1200th Rd and RTE 150\Plan and Profile Sheets.dgn

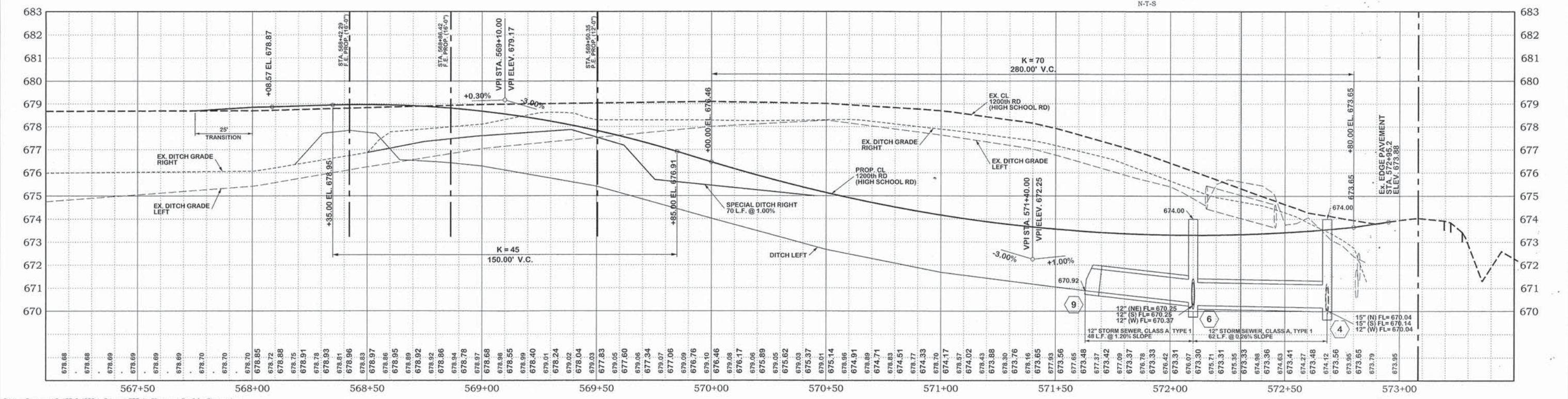
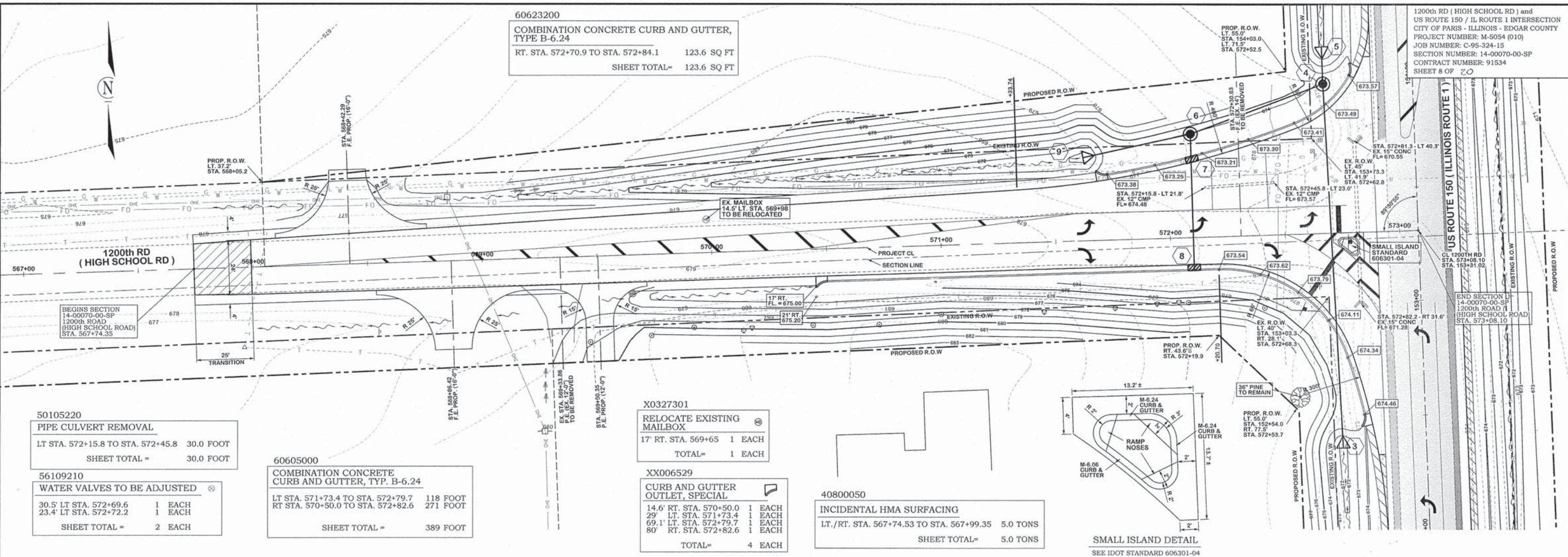
FRANCIS ASSOCIATES
 CONSULTING ENGINEERS
 LAND SURVEYORS
 330 NORTH CENTRAL AVENUE
 PARIS, ILLINOIS 61944
 PH. (217) 465-5306
 PROFESSIONAL DESIGN FIRM #184-001406

SCALES	DRAWN	TLT
PLAN: HOR. 1"=20'	DATE	1/25/16
VERT. 1"=2'	CHECKED	
REVISD	DATE	
REVISD	DATE	
REVISD	DATE	

FRANCIS ASSOC.
 FILE NO.
P-477-3

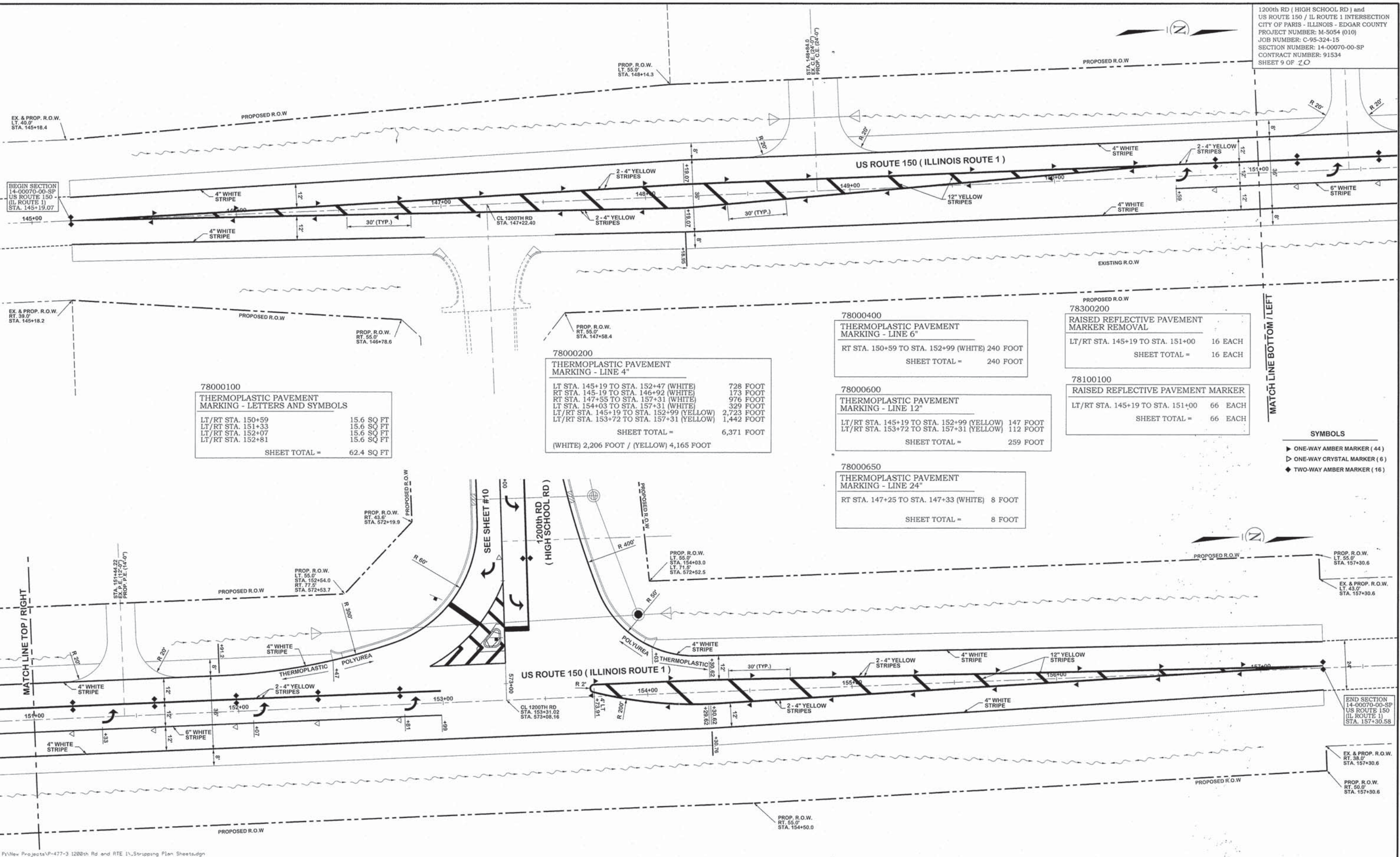
PLAN AND PROFILE - ILLINOIS ROUTE 1 (US ROUTE 150)
 1200th RD (HIGH SCHOOL RD) and US ROUTE 150 / IL ROUTE 1 INTERSECTION
 CITY OF PARIS - ILLINOIS - EDGAR COUNTY

SHEET NO.
7
 OF 20 SHEETS



<p>FRANCIS ASSOCIATES CONSULTING ENGINEERS LAND SURVEYORS 330 NORTH CENTRAL AVENUE PARIS, ILLINOIS 61944 PH. (217) 465-5306 PROFESSIONAL DESIGN FIRM #184-001406</p>	<p>SCALES PLAN: HOR. 1"=20' VERT. 1"=2'</p>	<p>DRAWN: IJT DATE: 10/25/16</p>	<p>FRANCIS ASSOC. FILE NO. P-477-3</p>	<p>PLAN AND PROFILE - 1200th Road 1200th RD (HIGH SCHOOL RD) and US ROUTE 150 / IL ROUTE 1 INTERSECTION CITY OF PARIS - ILLINOIS - EDGAR COUNTY</p>	<p>SHEET NO. 8 OF 20 SHEETS</p>
	<p>REVISIONS DATE: _____ APPROVED: _____ DATE: _____</p>	<p>CHECKED: _____ DATE: _____</p>			
	<p>REVISIONS DATE: _____ APPROVED: _____ DATE: _____</p>	<p>CHECKED: _____ DATE: _____</p>			
	<p>REVISIONS DATE: _____ APPROVED: _____ DATE: _____</p>	<p>CHECKED: _____ DATE: _____</p>			

1200th RD (HIGH SCHOOL RD) and
US ROUTE 150 / IL ROUTE 1 INTERSECTION
CITY OF PARIS - ILLINOIS - EDGAR COUNTY
PROJECT NUMBER: M-5054 (010)
JOB NUMBER: C-95-324-15
SECTION NUMBER: 14-00070-00-SP
CONTRACT NUMBER: 91534
SHEET 9 OF 20



78000100
THERMOPLASTIC PAVEMENT MARKING - LETTERS AND SYMBOLS

LT/RT STA. 150+59	15.6 SQ FT
LT/RT STA. 151+33	15.6 SQ FT
LT/RT STA. 152+07	15.6 SQ FT
LT/RT STA. 152+81	15.6 SQ FT
SHEET TOTAL =	62.4 SQ FT

78000200
THERMOPLASTIC PAVEMENT MARKING - LINE 4"

LT STA. 145+19 TO STA. 152+47 (WHITE)	728 FOOT
RT STA. 145-19 TO STA. 146+92 (WHITE)	173 FOOT
RT STA. 147+55 TO STA. 157+31 (WHITE)	976 FOOT
LT STA. 154+03 TO STA. 157+31 (WHITE)	329 FOOT
LT/RT STA. 145+19 TO STA. 152+99 (YELLOW)	2,723 FOOT
LT/RT STA. 153+72 TO STA. 157+31 (YELLOW)	1,442 FOOT
SHEET TOTAL =	6,371 FOOT

(WHITE) 2,206 FOOT / (YELLOW) 4,165 FOOT

78000400
THERMOPLASTIC PAVEMENT MARKING - LINE 6"

RT STA. 150+59 TO STA. 152+99 (WHITE)	240 FOOT
SHEET TOTAL =	240 FOOT

78000600
THERMOPLASTIC PAVEMENT MARKING - LINE 12"

LT/RT STA. 145+19 TO STA. 152+99 (YELLOW)	147 FOOT
LT/RT STA. 153+72 TO STA. 157+31 (YELLOW)	112 FOOT
SHEET TOTAL =	259 FOOT

78000650
THERMOPLASTIC PAVEMENT MARKING - LINE 24"

RT STA. 147+25 TO STA. 147+33 (WHITE)	8 FOOT
SHEET TOTAL =	8 FOOT

78300200
RAISED REFLECTIVE PAVEMENT MARKER REMOVAL

LT/RT STA. 145+19 TO STA. 151+00	16 EACH
SHEET TOTAL =	16 EACH

78100100
RAISED REFLECTIVE PAVEMENT MARKER

LT/RT STA. 145+19 TO STA. 151+00	66 EACH
SHEET TOTAL =	66 EACH

- SYMBOLS**
- ▶ ONE-WAY AMBER MARKER (44)
 - ▷ ONE-WAY CRYSTAL MARKER (6)
 - ◆ TWO-WAY AMBER MARKER (16)

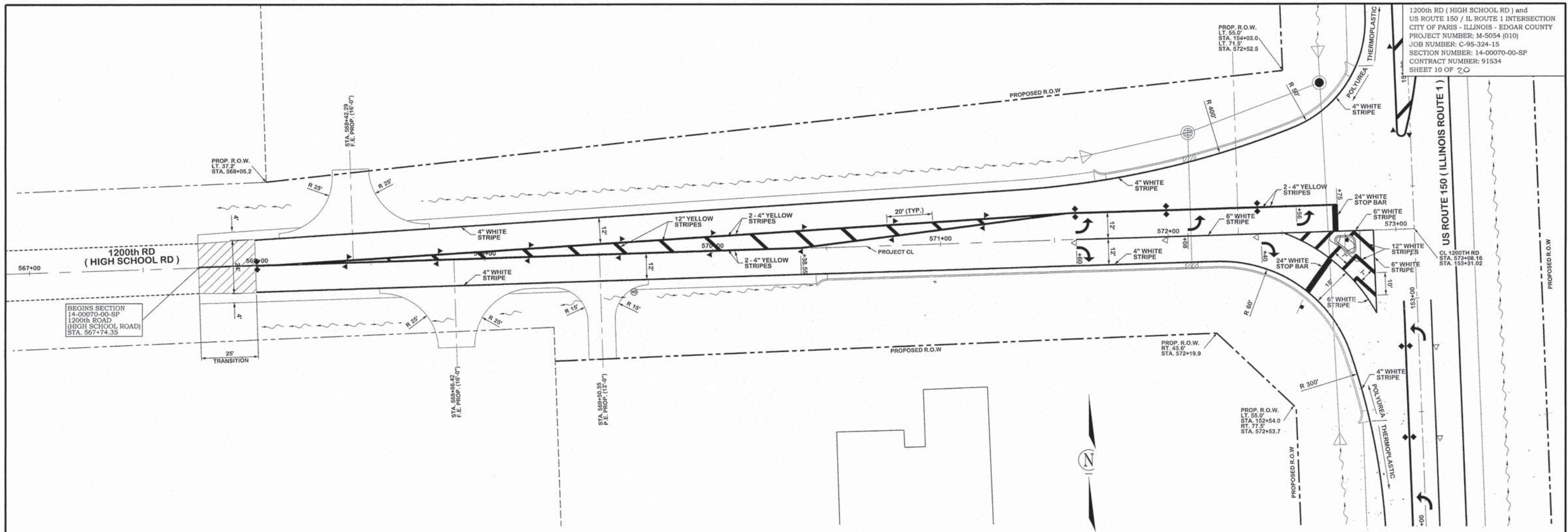
FRANCIS ASSOCIATES
CONSULTING ENGINEERS
LAND SURVEYORS
330 NORTH CENTRAL AVENUE
PARIS, ILLINOIS 61944
PH. (217) 465-5306
PROFESSIONAL DESIGN FIRM #184-001406

SCALES

PLAN : HOR. 1" = 20'	DRAWN : TLT
VERT. 1" = 2'	DATE : 1/25/16
REVISIONS	CHECKED
DATE	DATE
REVISIONS	APPROVED
DATE	DATE

FRANCIS ASSOC.
FILE NO.
P-477-3

STRIPING PLAN - ILLINOIS ROUTE 1 (US ROUTE 150)
1200th RD (HIGH SCHOOL RD) and US ROUTE 150 / IL ROUTE 1 INTERSECTION
CITY OF PARIS - ILLINOIS - EDGAR COUNTY



78000200
 POLYUREA PAVEMENT MARKING - LETTERS AND SYMBOLS

LT/RT STA. 571+60	15.6 SQ FT
LT STA. 572+08	15.6 SQ FT
RT STA. 572+40	15.6 SQ FT
LT STA. 572+56	15.6 SQ FT
SHEET TOTAL =	62.4 SQ FT

78008210
 POLYUREA PAVEMENT MARKING - LINE 4"

LT/RT STA. 568+00 TO STA. 572+75 (YELLOW)	1696 FOOT
LT STA. 568+00 TO STA. 572+84 (WHITE)	500 FOOT
RT STA. 568+00 TO STA. 572+86 (WHITE)	530 FOOT
SHEET TOTAL =	2726 FOOT
(WHITE) 1,030 FOOT / (YELLOW) 1,696 FOOT	

78008230
 POLYUREA PAVEMENT MARKING - LINE 6"

RT STA. 571+60 TO STA. 572+90 (WHITE)	222 FOOT
SHEET TOTAL =	222 FOOT

78008270
 POLYUREA PAVEMENT MARKING - LINE 24"

LT STA. 572+75 (WHITE)	12 FOOT
RT STA. 572+75 (WHITE)	18 FOOT
SHEET TOTAL =	30 FOOT

78100100
 RAISED REFLECTIVE PAVEMENT MARKER

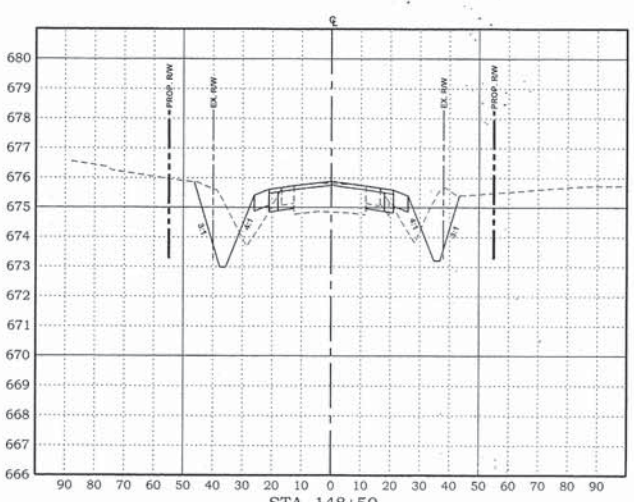
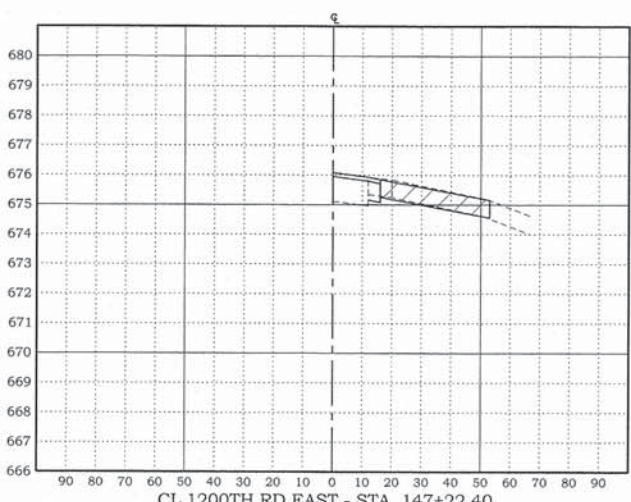
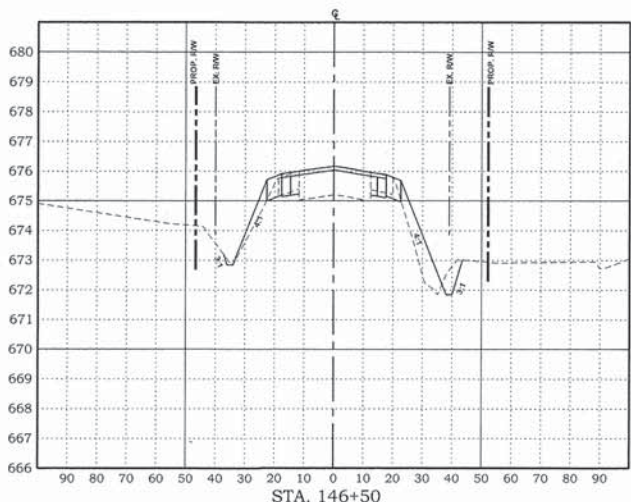
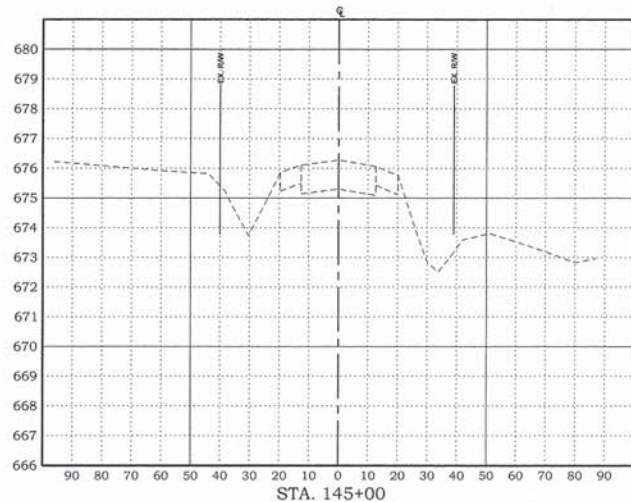
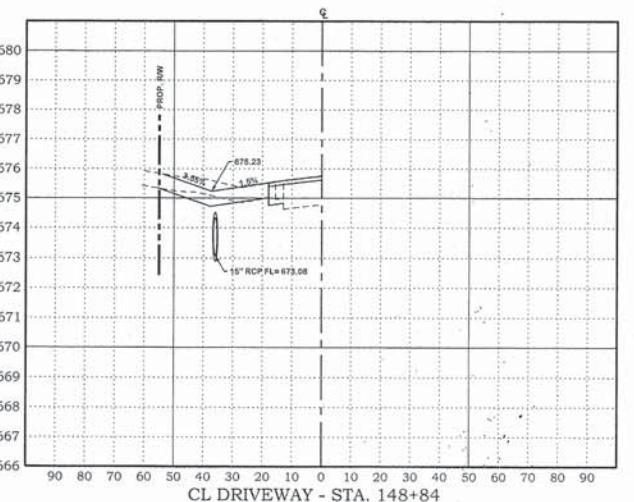
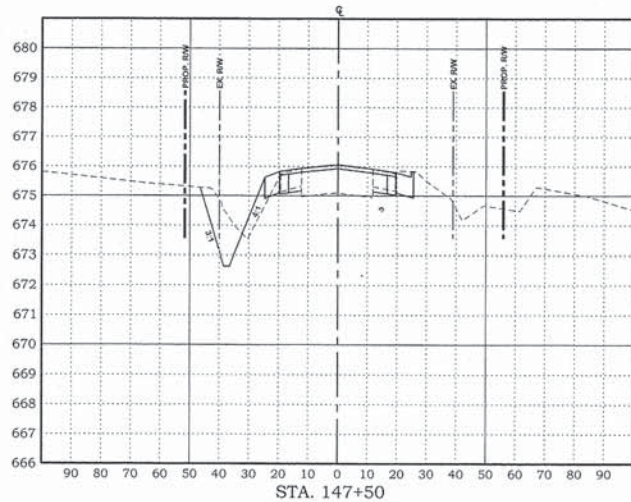
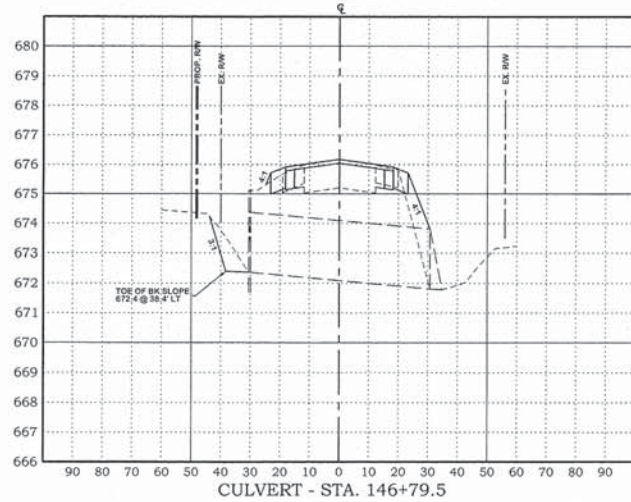
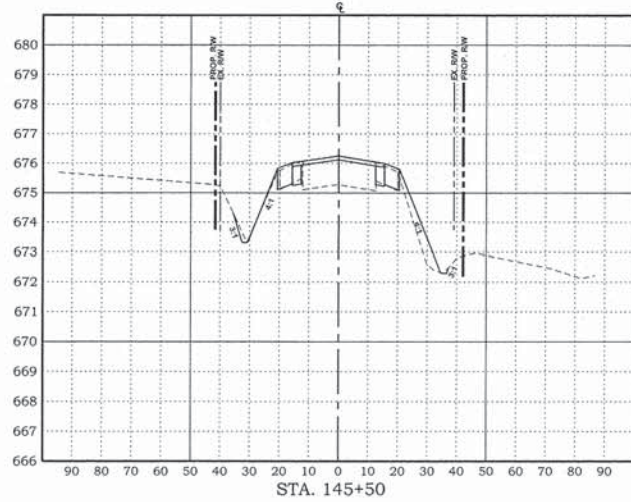
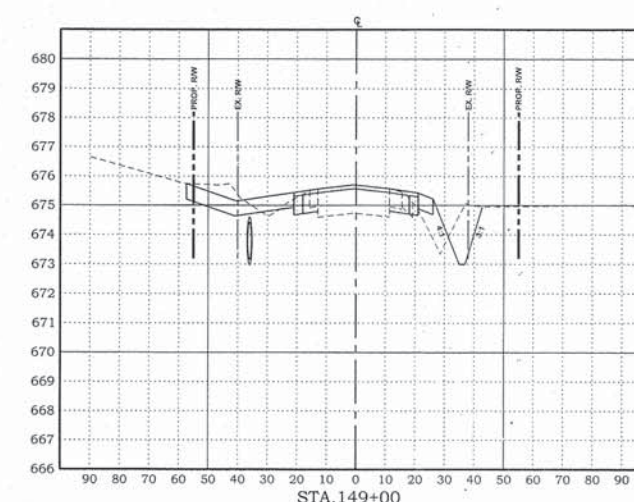
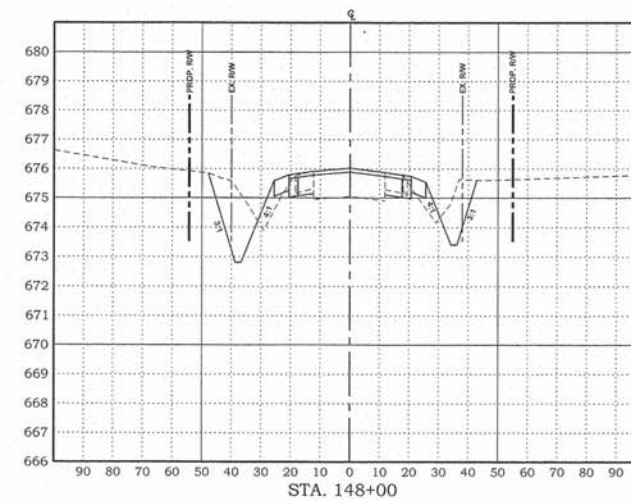
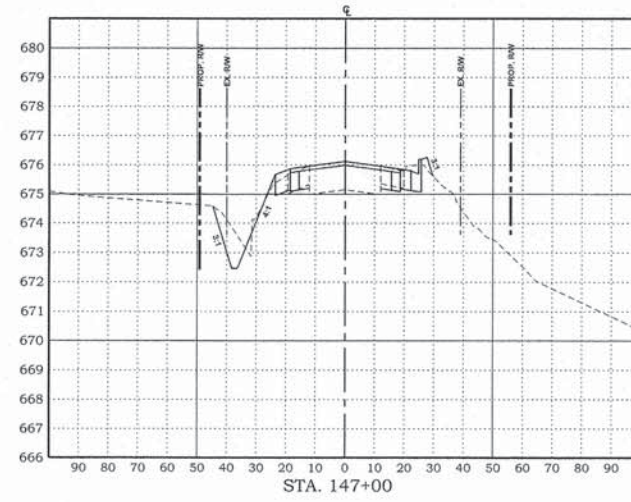
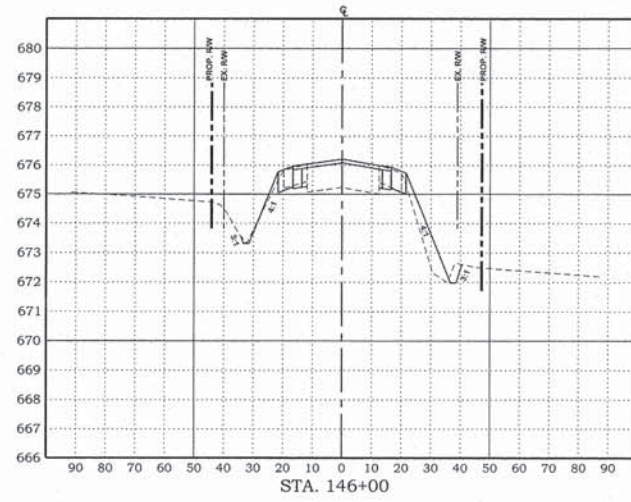
LT/RT STA. 568+00 TO STA. 573+08	27 EACH
SHEET TOTAL =	27 EACH

78008250
 POLYUREA PAVEMENT MARKING - LINE 12"

RT STA. 568+50 TO STA. 571+60 (YELLOW)	94 FOOT
RT STA. 572+50 TO STA. 572+90 (WHITE)	70 FOOT
SHEET TOTAL =	164 FOOT
(WHITE) 70 FOOT / (YELLOW) 94 FOOT	

- SYMBOLS**
- ▶ ONE-WAY AMBER MARKER (16)
 - ▷ ONE-WAY CRYSTAL MARKER (3)
 - ◆ TWO-WAY AMBER MARKER (8)

P:\New Projects\14-477-3 1200th Rd and RTE 150 - Striping Plan Sheets.dgn



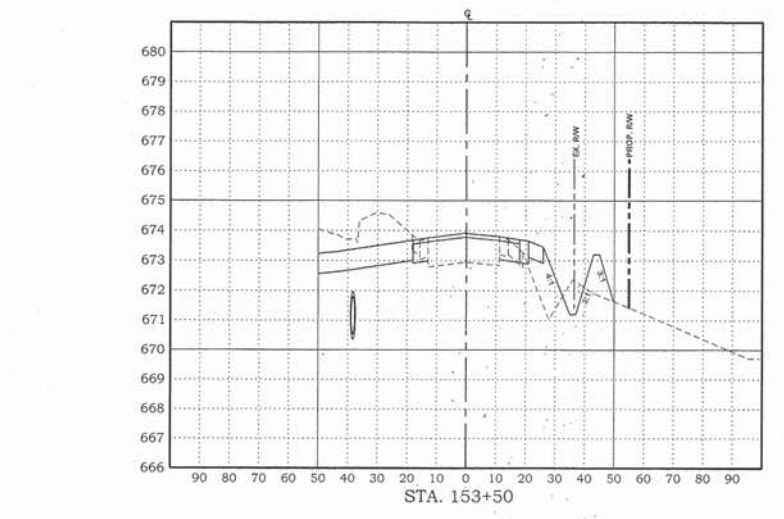
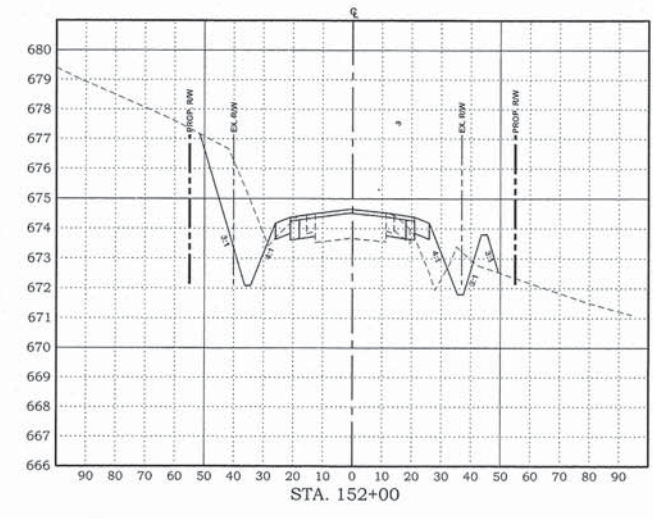
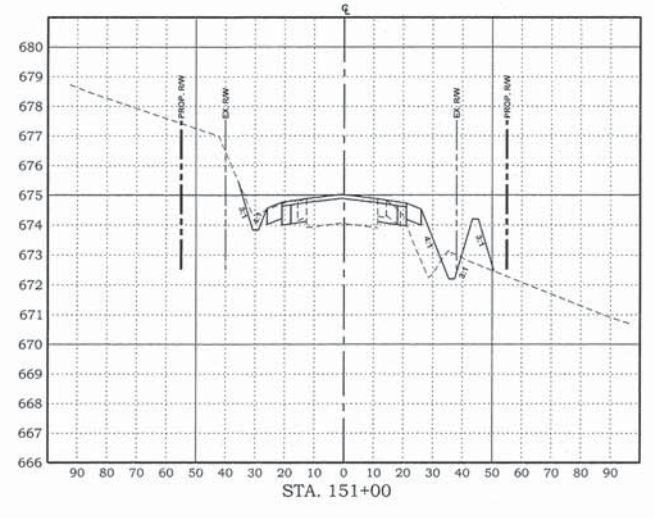
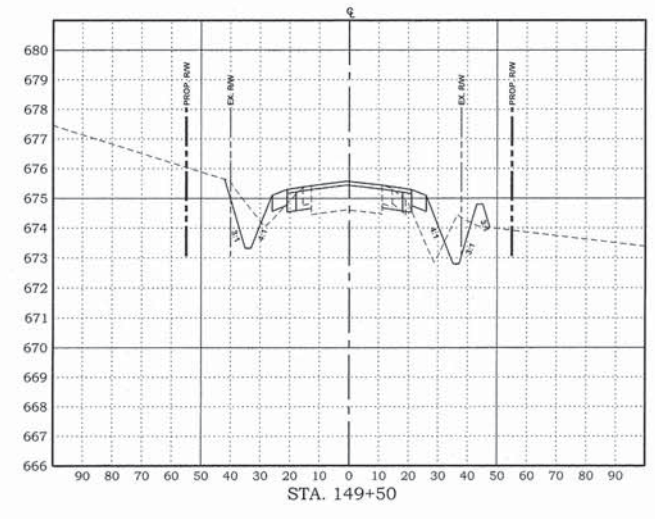
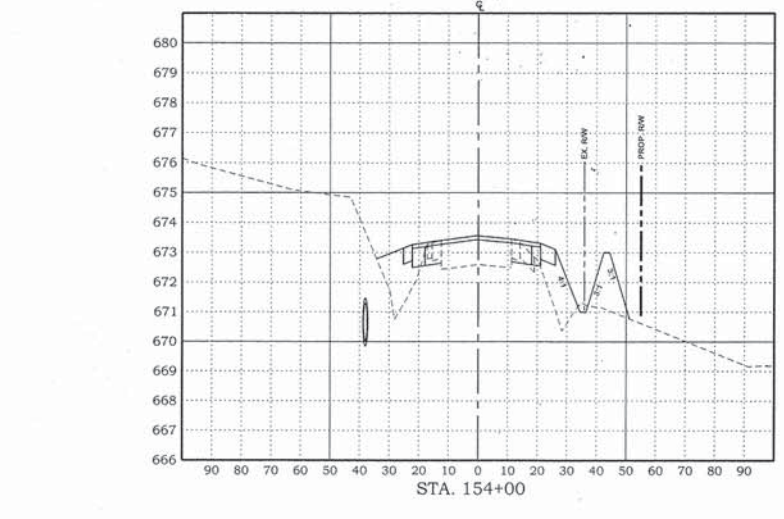
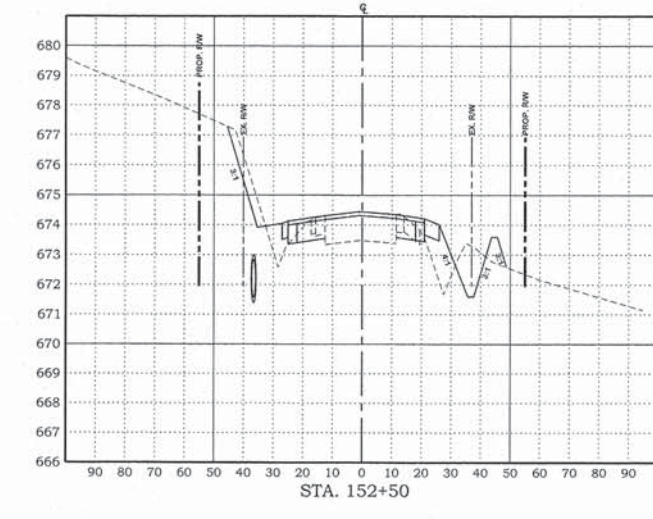
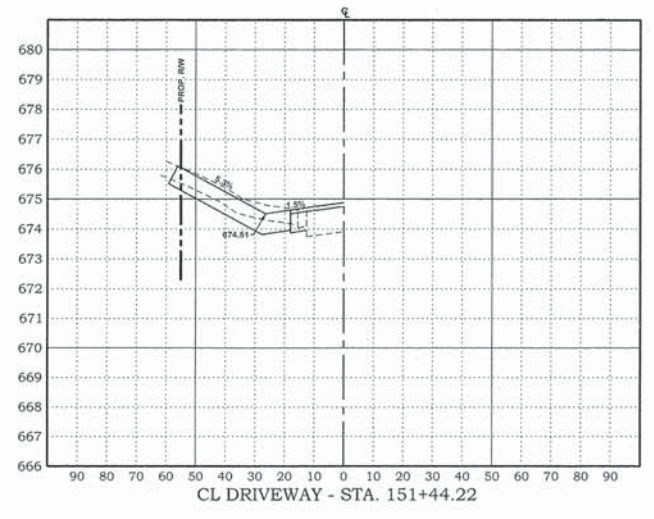
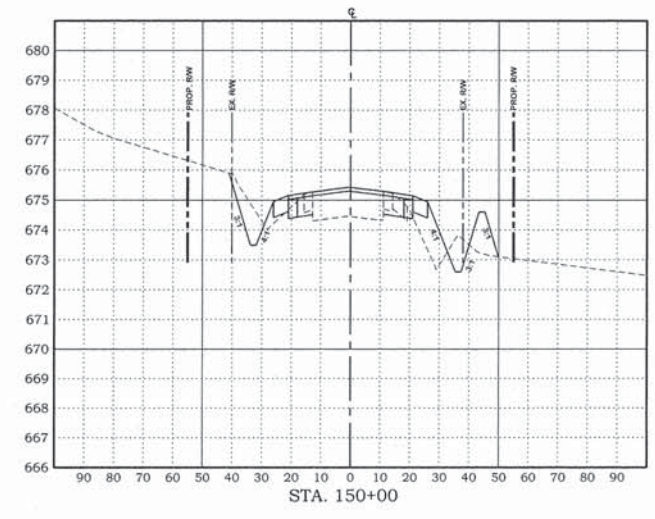
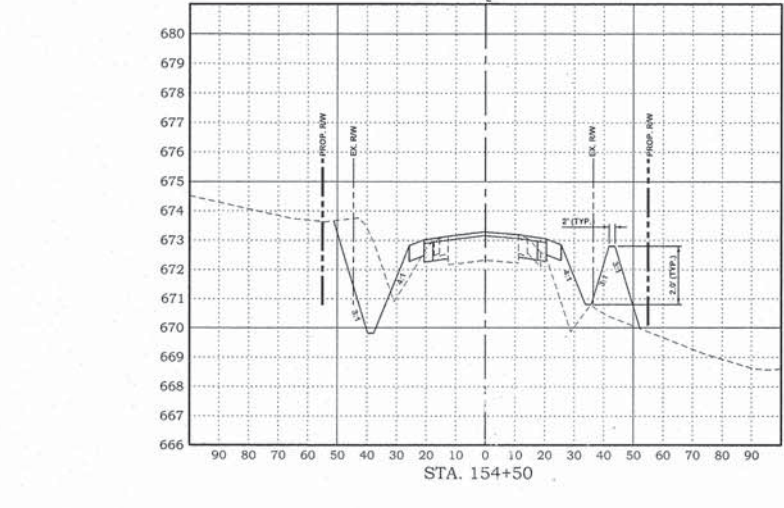
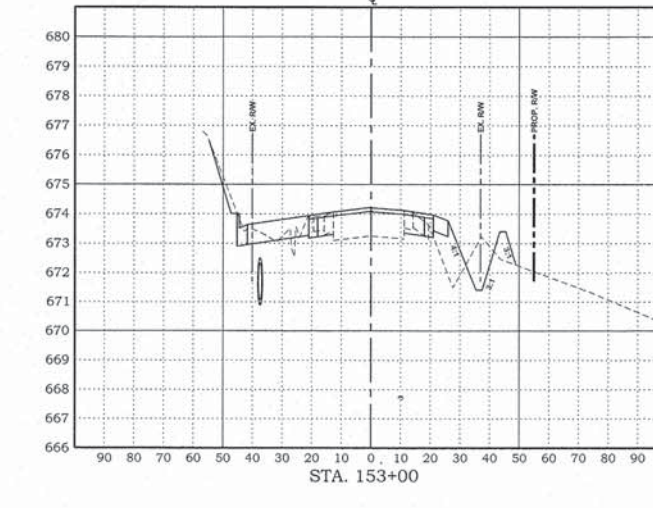
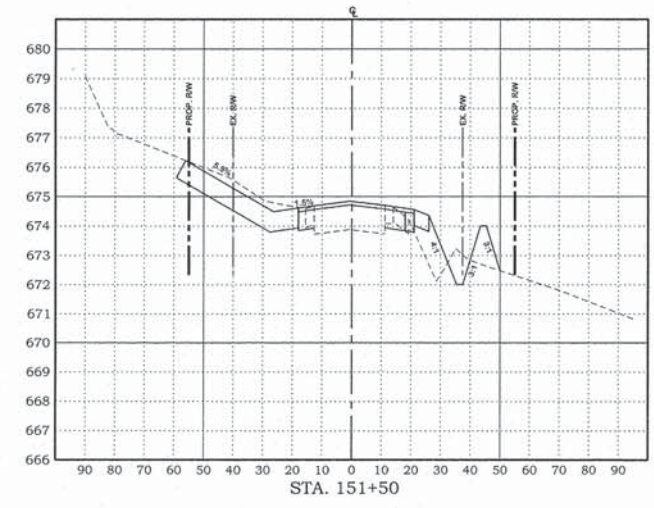
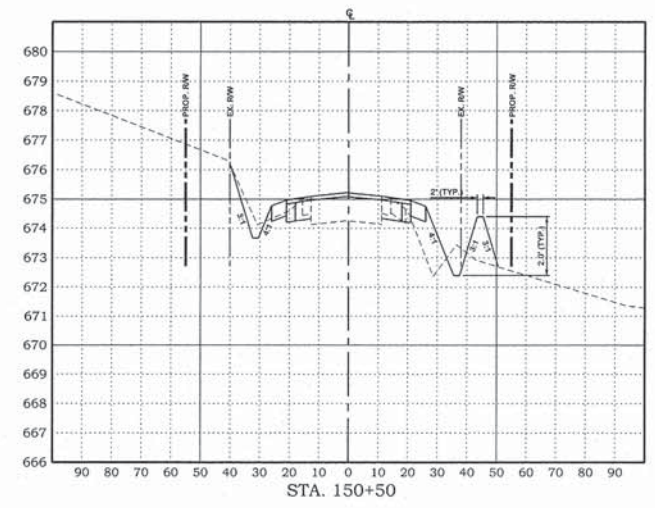
P:\New Projects\P-477-3 1200th Rd and RTE 1\Cross-Section sheets.dgn

FRANCIS ASSOCIATES
 CONSULTING ENGINEERS
 LAND SURVEYORS
 330 NORTH CENTRAL AVENUE
 PARIS, ILLINOIS 61944
 PH. (217) 465-5306
 PROFESSIONAL DESIGN FIRM #184-001406

SCALES	DRAWN	TIT
PLAN : HOR. 1"=30'	DATE	1/25/16
VERT. 1"=3'	CHECKED	
REVISION DATE	APPROVED	
REVISION DATE	REVISION	
REVISION DATE	DATE	

FRANCIS ASSOC.
 FILE NO.
P-477-3

CROSS-SECTIONS - ILLINOIS ROUTE 1 (US ROUTE 150)
 1200th RD (HIGH SCHOOL RD) and US ROUTE 150 / IL ROUTE 1 INTERSECTION
 CITY OF PARIS - ILLINOIS - EDGAR COUNTY



P:\New Projects\477-3 1200th Rd and RTE 1\1_Cross-Section sheets.dgn

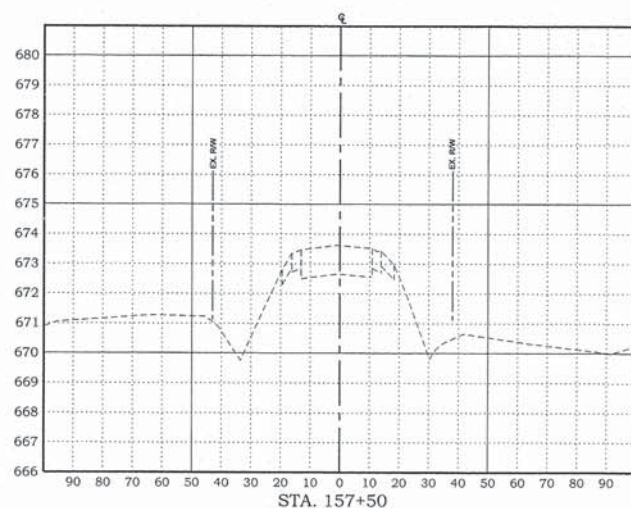
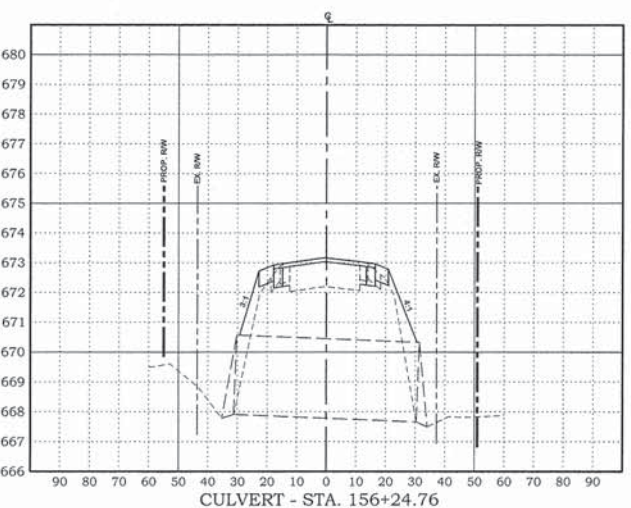
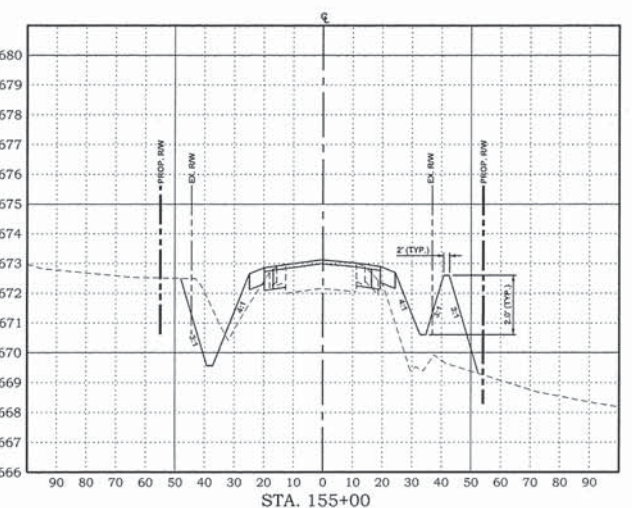
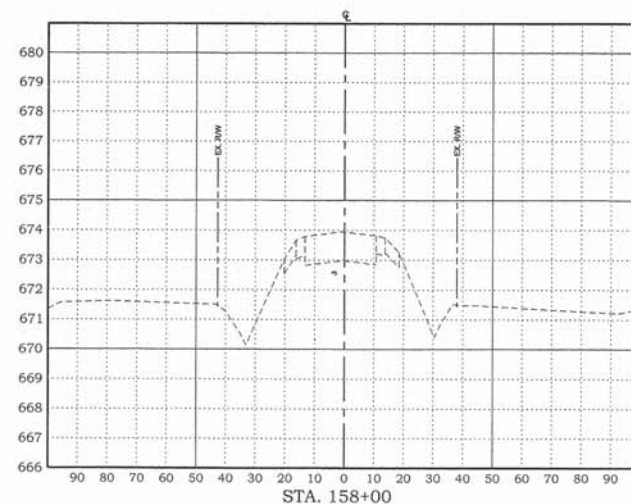
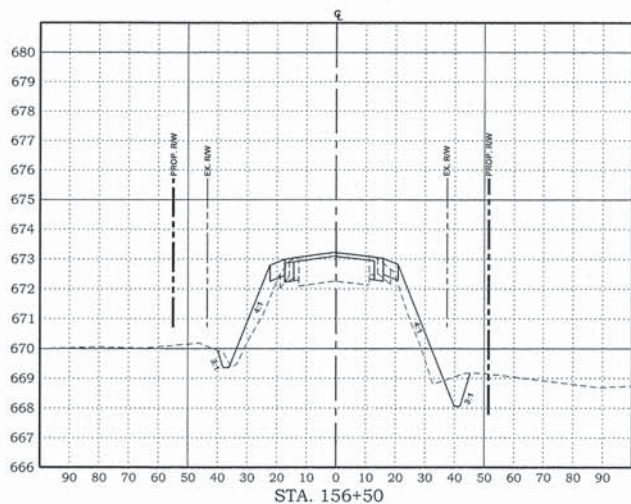
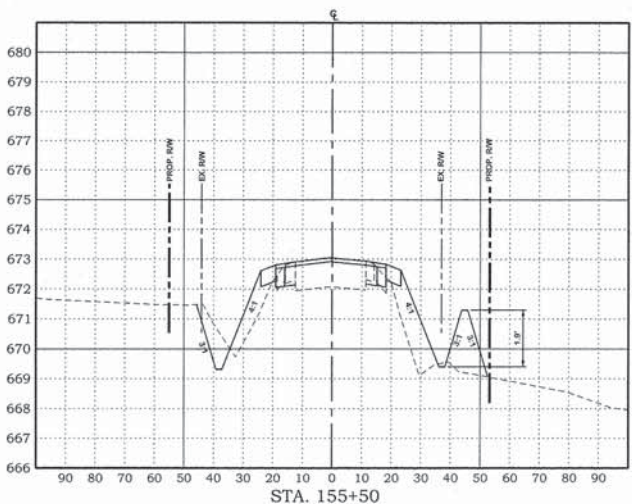
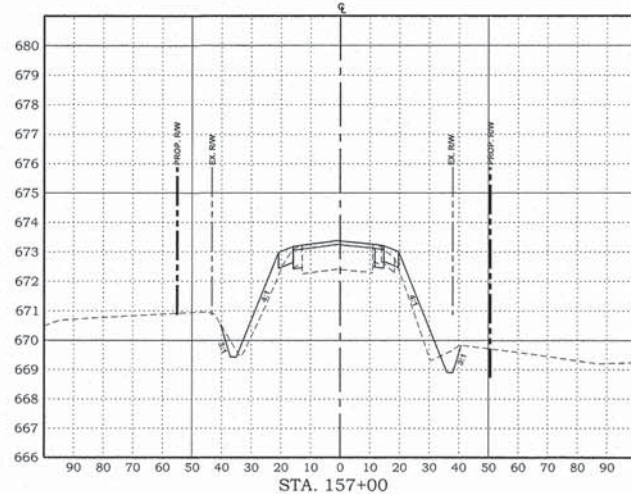
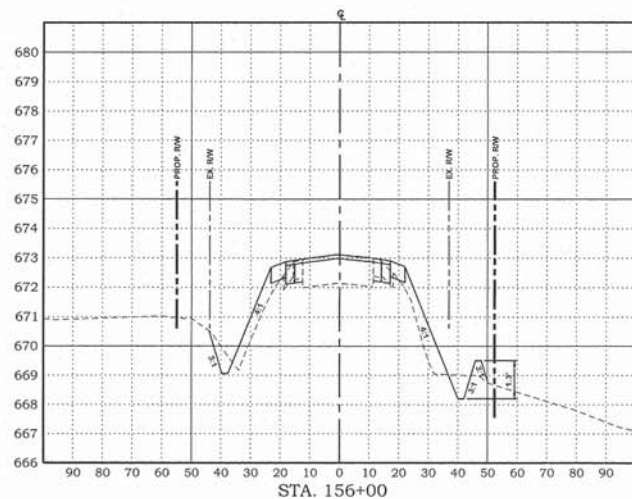
FRANCIS ASSOCIATES
 CONSULTING ENGINEERS
 LAND SURVEYORS
 330 NORTH CENTRAL AVENUE
 PARIS, ILLINOIS 61944
 PH. (217) 465-5306
 PROFESSIONAL DESIGN FIRM #184-001406




SCALES	DRAWN TLT
PLAN : HOR. 1"=30'	DATE 1/25/16
VERT. 1"=3'	CHECKED
REVISIONS	DATE
APPROVED	DATE
REVISIONS	DATE
APPROVED	DATE

FRANCIS ASSOC.
 FILE NO.
P-477-3

CROSS-SECTIONS - ILLINOIS ROUTE 1 (US ROUTE 150)
 1200th RD (HIGH SCHOOL RD) and US ROUTE 150 / IL ROUTE 1 INTERSECTION
 CITY OF PARIS - ILLINOIS - EDGAR COUNTY



P:\New Projects\477-3 1200th Rd and RTE 1\Cross-Section sheets.dgn



FRANCIS ASSOCIATES
 CONSULTING ENGINEERS
 LAND SURVEYORS
 330 NORTH CENTRAL AVENUE
 PARIS, ILLINOIS 61944
 PH: (217) 465-5306
 PROFESSIONAL DESIGN FIRM #184-001406



SCALES
 PLAN : HOR. 1"=30'
 VERT. 1"=3'

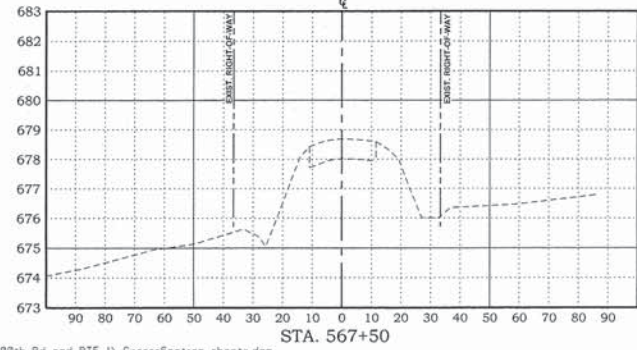
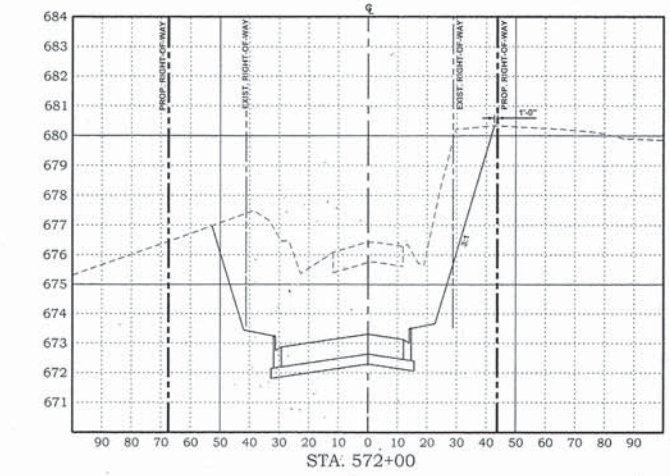
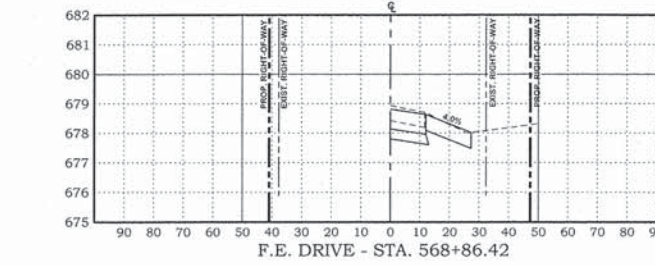
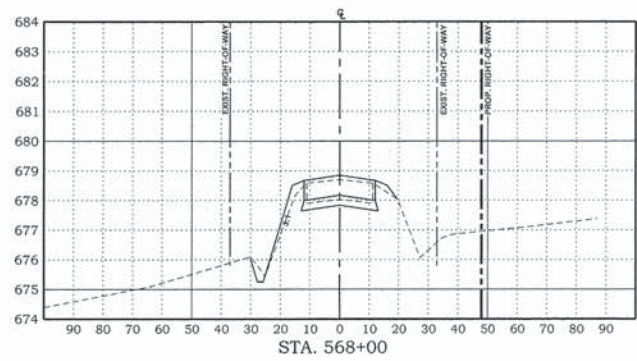
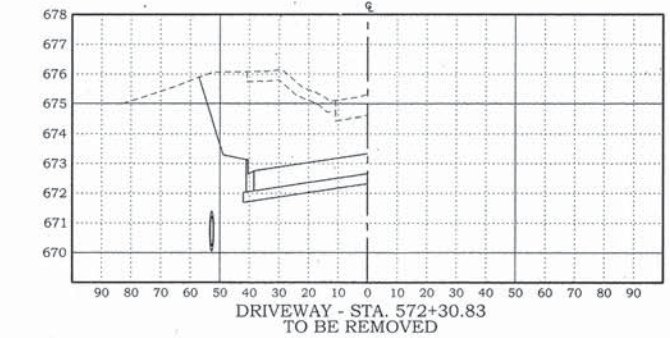
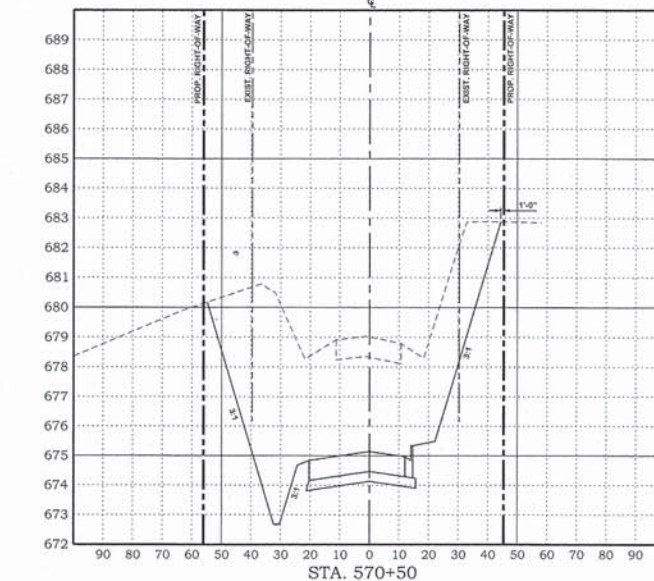
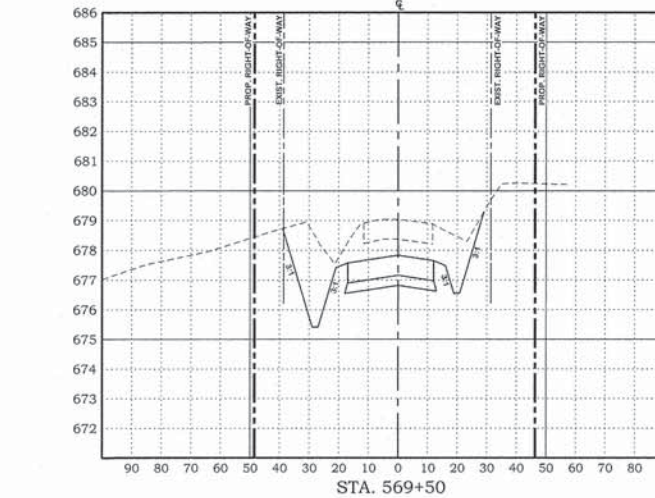
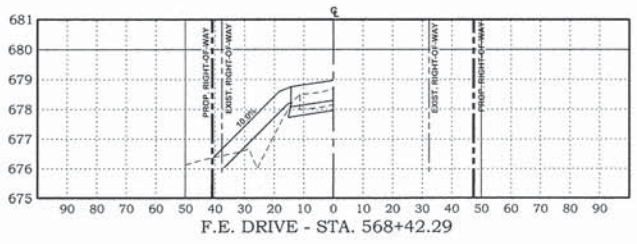
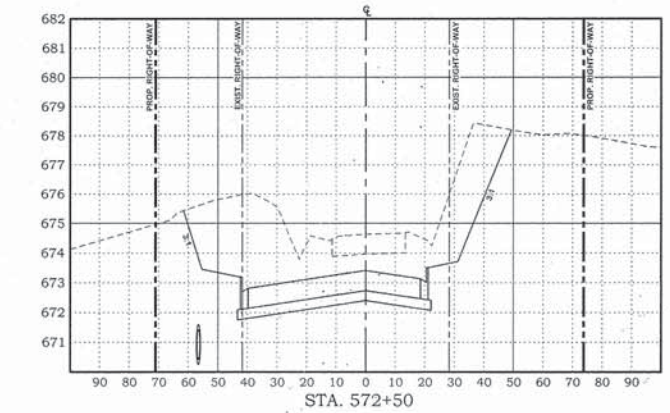
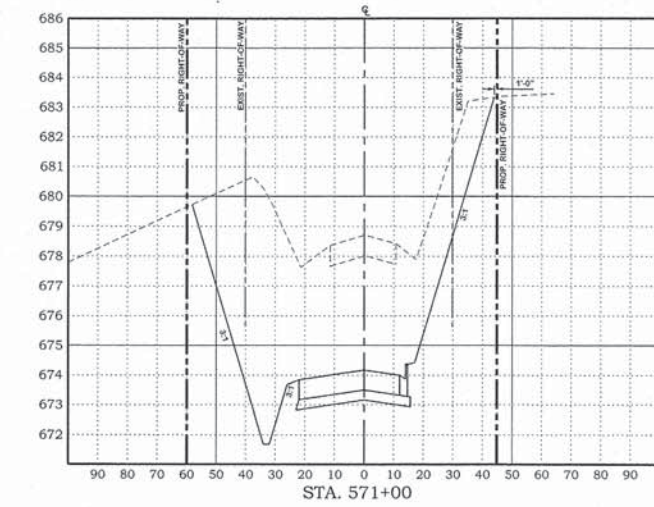
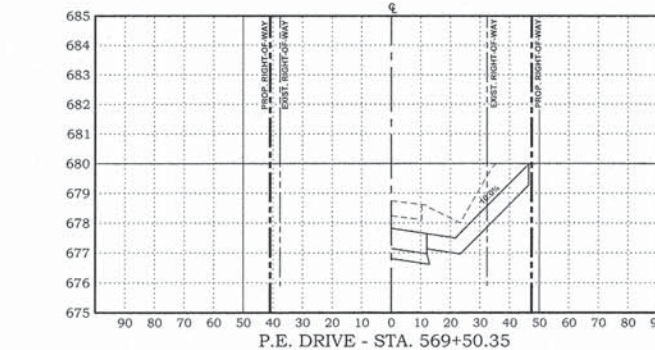
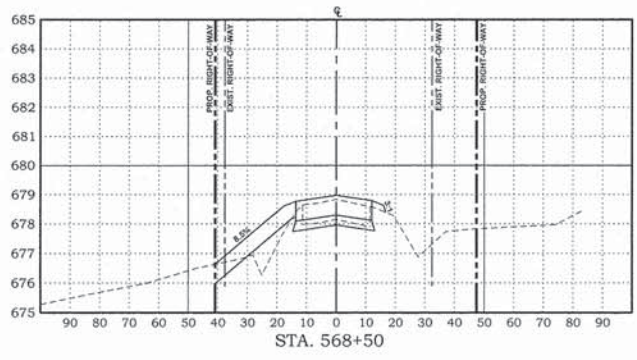
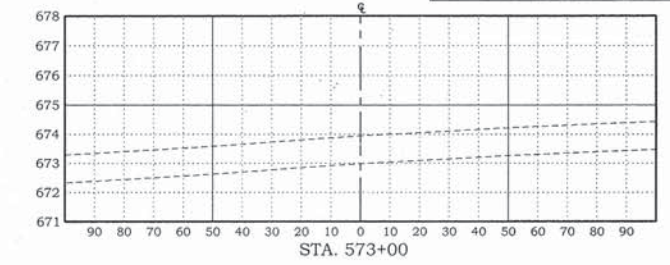
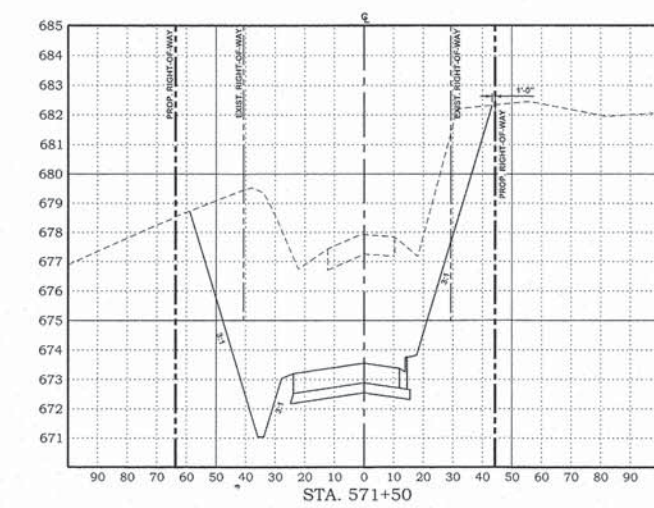
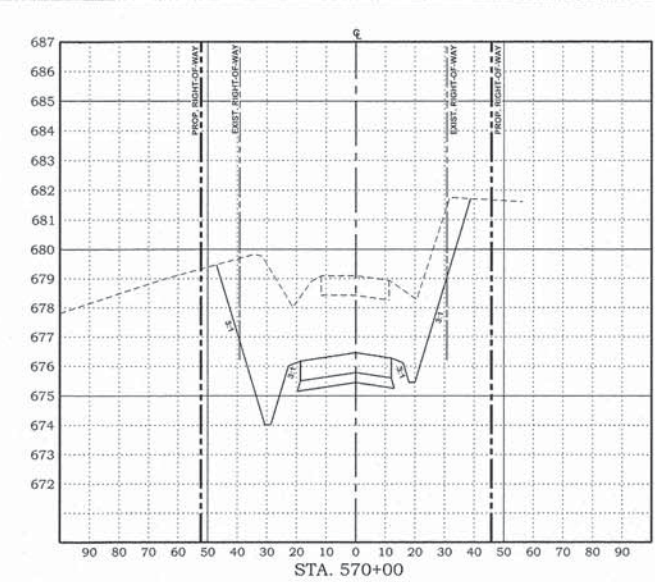
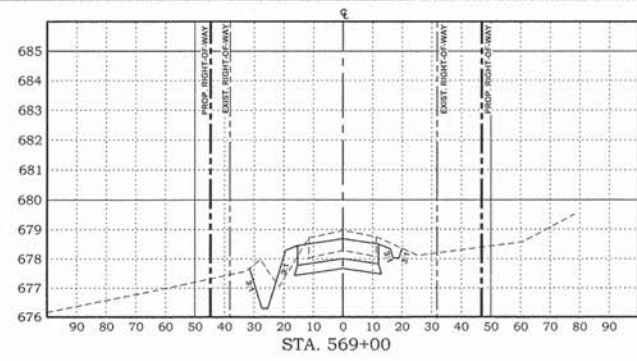
DRAWN: TLT
 DATE: 1/25/16
 CHECKED: _____
 DATE: _____
 APPROVED: _____
 DATE: _____
 REVISED: _____
 DATE: _____

FRANCIS ASSOC.
 FILE NO.
P-477-3

CROSS-SECTIONS - ILLINOIS ROUTE 1 (US ROUTE 150)

1200th RD (HIGH SCHOOL RD) and US ROUTE 150 / IL ROUTE 1 INTERSECTION
 CITY OF PARIS - ILLINOIS - EDGAR COUNTY

SHEET NO.
13
 OF 20 SHEETS



SCALES	DRAWN DATE	TILT
PLAN : HOR. 1"=30'	1/25/16	
VERT. 1"=3'	CHECKED DATE	
REVISED DATE	APPROVED DATE	
REVISED DATE	REVISED DATE	

28000400
PERIMETER EROSION BARRIER

RT STA. 568+42 TO STA. 569+42	100	FOOT
LT STA. 567+75 TO STA. 568+75	120	FOOT
LT STA. 571+40 TO STA. 572+50	150	FOOT
RT STA. 144+60 TO STA. 146+80	220	FOOT
RT STA. 147+60 TO STA. 157+30	970	FOOT
LT STA. 154+00 TO STA. 154+30	60	FOOT
SHEET TOTAL =	1,620	FOOT

28000500
INLET AND PIPE PROTECTION

36' LT STA. 571+60	1	EACH
14' RT STA. 572+10	1	EACH
35' LT STA. 572+10	1	EACH
45' LT STA. 572+10	1	EACH
32' LT STA. 146+80	1	EACH
36' LT STA. 149+10	1	EACH
36' LT STA. 152+35	1	EACH
40' LT STA. 153+95	1	EACH
38' LT STA. 156+25	1	EACH
SHEET TOTAL =	9	EACH

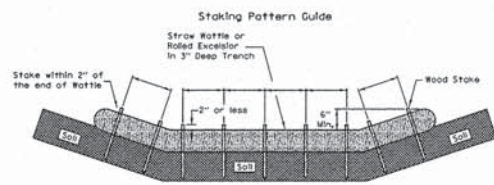
28000305
TEMPORARY DITCH CHECKS

RT STA. 155+40	8	FOOT
RT STA. 155+80	8	FOOT
RT STA. 156+70	8	FOOT
LT STA. 569+30	8	FOOT
LT STA. 569+60	8	FOOT
LT STA. 569+90	8	FOOT
LT STA. 570+20	8	FOOT
LT STA. 570+50	8	FOOT
LT STA. 571+00	8	FOOT
SHEET TOTAL =	72	FOOT

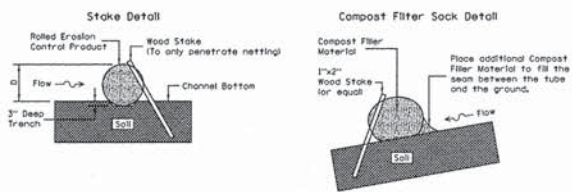
NOTES LEGEND

- INSTALL DITCH CHECK IN ACCORDANCE WITH IDOT HIGHWAY STANDARD 280001. LENGTH = 8'-0" (MIN.). MATERIAL SHALL BE ROLLED EXCELSIOR OR AS APPROVED BY ENGINEER. INSPECT EACH WEEK AND AFTER EACH RAIN EVENT OF MORE THAN 0.5 INCHES.
- SILT FENCE TO BE INSTALLED TO ALLOW ALL SURFACE DRAINAGE LEAVING THE SITE TO FLOW THROUGH THE FENCE. SILT FENCE TO BE INSTALLED PRIOR TO CONSTRUCTION. SILT FENCE SHALL REMAIN UNTIL PERMANENT GROUND COVER IS ESTABLISHED. INSPECT EACH WEEK AND AFTER EACH RAIN EVENT OF MORE THAN 0.5 INCHES.
- NOT USED
- INSTALL INLET AND PIPE PROTECTION IN ACCORDANCE WITH IDOT HIGHWAY STANDARD 280001. INSPECT EACH WEEK AND AFTER EACH RAIN EVENT OF MORE THAN 0.5 INCHES.

1200th RD (HIGH SCHOOL RD) and
US ROUTE 150 / IL ROUTE 1 INTERSECTION
CITY OF PARIS - ILLINOIS - EDGAR COUNTY
PROJECT NUMBER: M-5054 (010)
JOB NUMBER: C-95-324-15
SECTION NUMBER: 14-00070-00-SP
CONTRACT NUMBER: 91534
SHEET 15 OF 20

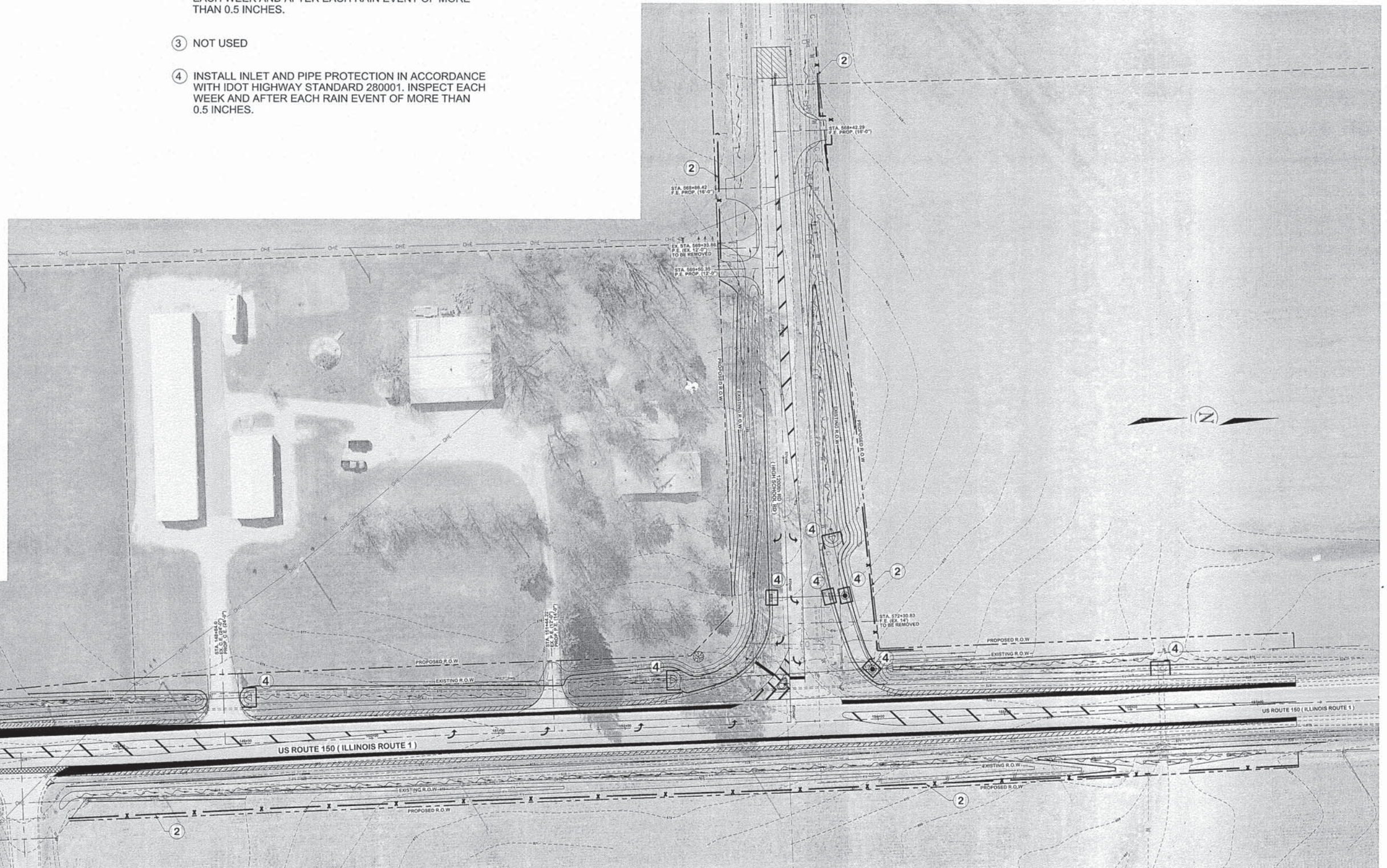


- Notes
- Overlap minimum is the diameter of the roll.
 - 4' spacing for wattles.
 - 2' spacing for rolled excelsior.
 - Or space according to manufacturer's specifications.



- Notes
- Drawings are not to scale.
 - Ends of wattles or rolled excelsior shall be turned at least 6" uplope.
 - Recommended stakes are 1 1/2" wide x 1 1/2" thick x 30" long.
 - Stakes shall not extend above the straw wattle more than 2".
 - Spacing: The top of the upstream ditch check shall create a horizontal line with the top of the downstream ditch check.
 - When compost filter sock ditch check is used, place a compost berm upstream of the filter sock use 10M 805. A trench is not required.

ROLLED EXCELSIOR FOR DITCH CHECK



P:\New Projects\IP-477-3 1200th Rd and RTE 1, Erosion Control Plan.dgn

FRANCIS ASSOCIATES
CONSULTING ENGINEERS
LAND SURVEYORS
330 NORTH CENTRAL AVENUE
PARIS, ILLINOIS 61944
PH. (217) 465-5306
PROFESSIONAL DESIGN FIRM #184-001406

SCALES	DRAWN: TLT	DATE: 1/25/16
PLAN: 1"=40'	CHECKED: _____	DATE: _____
REVISED: _____	APPROVED: _____	DATE: _____
REVISED: _____	REVISED: _____	DATE: _____

FRANCIS ASSOC. FILE NO.
P-477-3

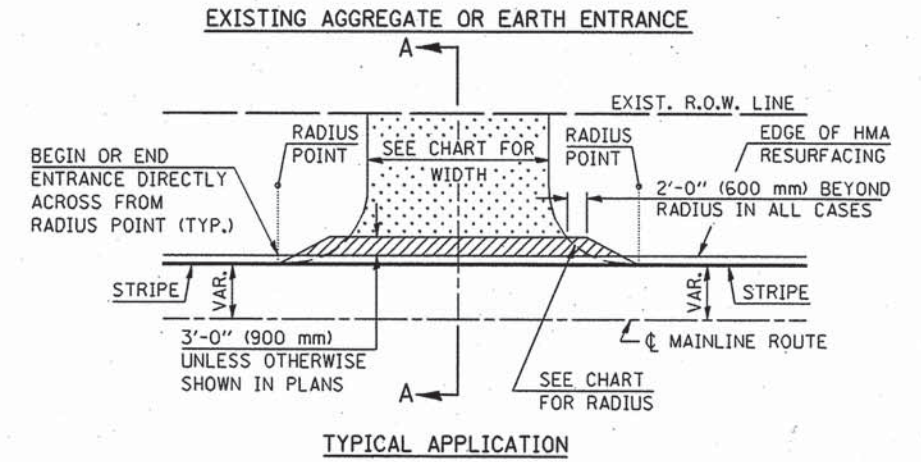
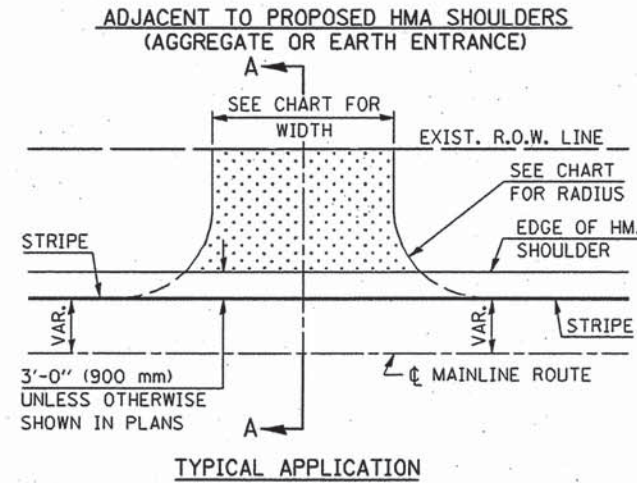
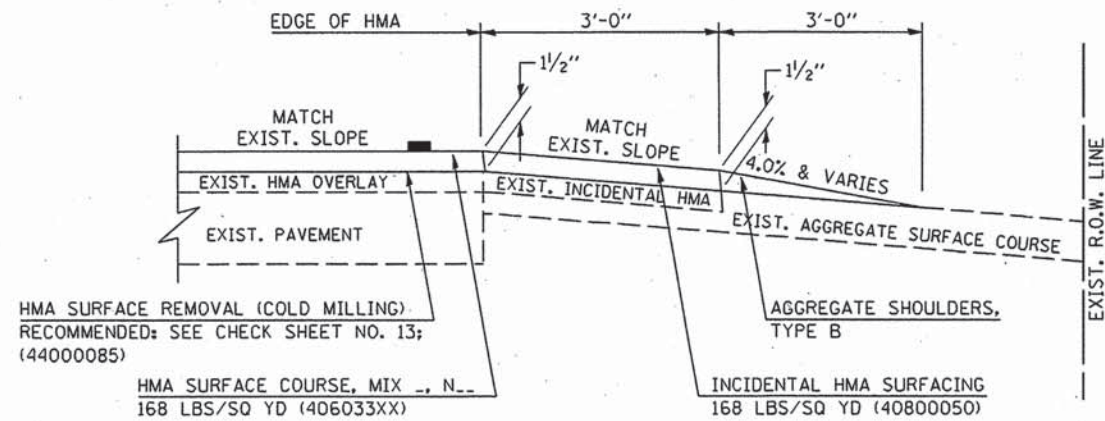
EROSION CONTROL PLAN - ILLINOIS ROUTE 1 (US ROUTE 150)
1200th RD (HIGH SCHOOL RD) and US ROUTE 150 / IL ROUTE 1 INTERSECTION
CITY OF PARIS - ILLINOIS - EDGAR COUNTY

SHEET NO.
15
OF 20 SHEETS

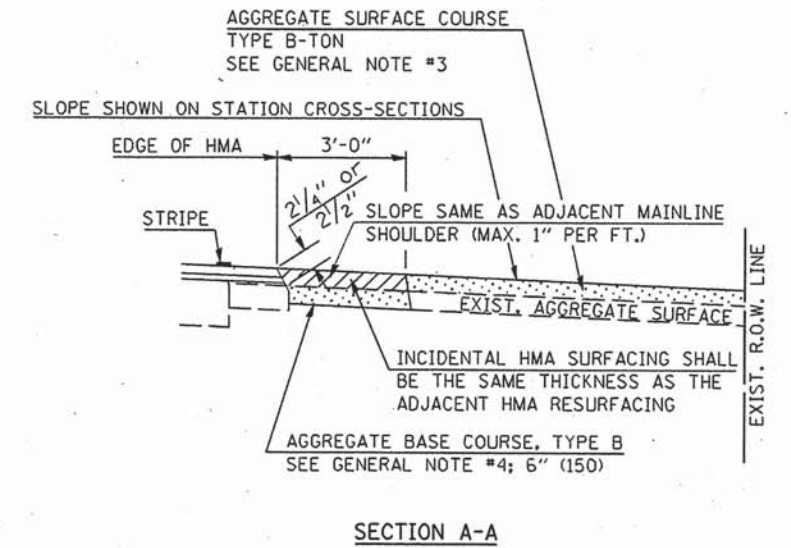
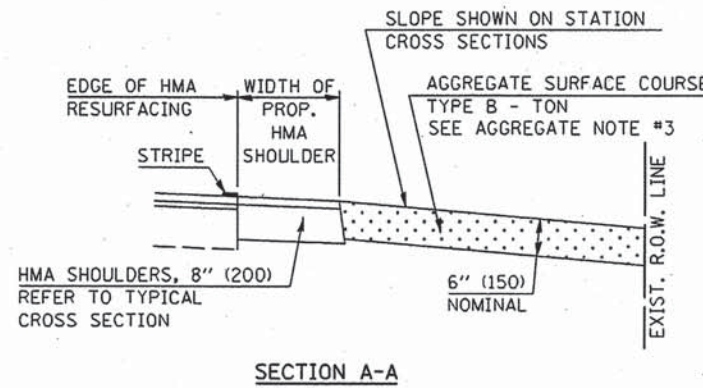
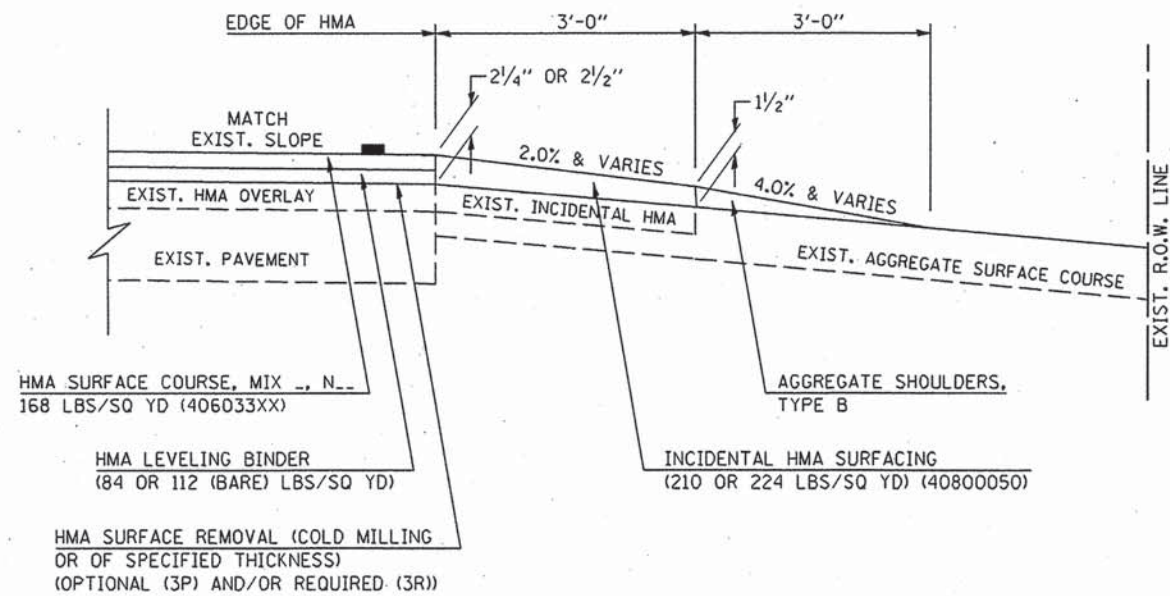
PROJECTS WITHOUT RECONSTRUCTION
 ("3R" WITHOUT RECONSTRUCTION, 3P, SMART AND CM)

PROJECTS WITH RECONSTRUCTION
 ("3R" IMPROVEMENTS AND SMART/3P "SPOT" LOCATIONS)

S.M.A.R.T. IMPROVEMENTS
 (POLICY RESURFACING; BDE 53-4.03; 1 1/2")



"3P" OR "3R" IMPROVEMENTS
 (POLICY RESURFACING; BDE 53-4.02; 2 1/4" OR 2 1/2" ON BARE CONCRETE)



Note: All dimensions are in INCHES (millimeters) unless otherwise shown.

DESIGNER NOTE: SEE PLAN PREPARATION MEMORANDUM 40-09

FILE NAME =	USER NAME = craigre	DESIGNED -	REVISED - 12/01/06 TJB
c:\pwork\PMIDOT\CRAIGRE\d0101509\40800050.dgn		DRAWN -	REVISED - 09/21/07 KAG
		CHECKED -	REVISED - 04/30/08 KJT
		DATE -	REVISED -

STATE OF ILLINOIS
 DEPARTMENT OF TRANSPORTATION

FIELD ENTRANCES (NONCOMMERCIAL RURAL)

SCALE: NA SHEET NO. 1 OF 2 SHEETS STA. TO STA.

DISTRICT 5 DETAIL NO. 40800050A

F.A. RTE.	SECTION	COUNTY	TOTAL SHEETS	SHEET NO.
			20	16
FED. ROAD DIST. NO. ILLINOIS FED. AID PROJECT			CONTRACT NO. 01534	

DESIGNER NOTE: SEE PLAN PREPARATION MEMORANDUM 40-09

GENERAL NOTES

1. THE EXISTING SURFACE SHALL BE PREPARED IN ACCORDANCE WITH SECTION 408 OF THE STANDARD SPECIFICATIONS.
2. ANY NECESSARY WORK BEHIND THE HMA SHOULDER OR THE INCIDENTAL HMA SURFACING SHALL BE AS SHOWN IN THE PLANS AND/OR AS DIRECTED BY THE ENGINEER.
3. EARTH EXCAVATION REQUIRED FOR THE CONSTRUCTION OF THE AGGREGATE SURFACE COURSE SHALL BE INCLUDED IN THE COST OF AGGREGATE SURFACE COURSE.
4. AGGREGATE BASE COURSE, TYPE B, 6" (150 mm) MIN. SHALL BE USED WHERE IN THE OPINION OF THE ENGINEER THERE IS NOT SUFFICIENT BASE MATERIAL FOR THE PROPOSED ENTRANCES. THIS MATERIAL SHALL GENERALLY BE USED TO WIDEN ANY EXISTING RETURN OR TO CONSTRUCT NEW ENTRANCES WHERE NONE NOW EXISTS.
5. THE AGGREGATE BASE COURSE SHALL BE CONSTRUCTED 12" (300 mm) WIDER THAN THE SURFACE DIMENSIONS AS SHOWN ABOVE.
6. EXISTING FIELD ENTRANCES OF AGGREGATE OR EARTH WITH NO HMA APRON SHALL NOT RECEIVE A NEW HMA APRON WITHOUT PROPER APPROVAL THROUGH THE BUREAU OF OPERATIONS "POLICY ON PERMITS FOR ACCESS DRIVEWAYS TO STATE HIGHWAYS".
7. TO ASSURE APPROPRIATE ACCESS POLICIES ARE FOLLOWED ALL NEW ACCESS SHALL BE APPLIED FOR THROUGH THE BUREAU OF OPERATIONS PERMIT APPLICATION PROCESS. PLAN PREPARATION MEMORANDUMS 40-09 AND 40-11 ALONG WITH DISTRICT CONSTRUCTION MEMORANDUM 03/14 DISCUSS THIS PROCEDURE.

RURAL ENTRANCE DESIGN STANDARDS (PPM 40-09)																
DESIGN ELEMENT	NEW CONSTRUCTION & 3R with RECONSTRUCTION						3R w/out RECONSTRUCTION, 3P, SMART & CM									
	NONCOMMERCIAL			FIELD W/ FARM IMPLEMENTS			COMMERCIAL			NONCOMMERCIAL			COMMERCIAL			
	PRIVATE & FIELD			FIELD W/ FARM IMPLEMENTS			COMMERCIAL			PRIVATE & FIELD			COMMERCIAL			
	min.	des.	max.	min.	max.	min.	des.	max.	min.	des.	max.	min.	des.	max.		
SURFACE WIDTH (FT)	12	16	24	24	30	1 LANE, 1 WAY						1 LANE, 1 WAY				
						14	16	24								
						2 LANE, 2 WAY						2 LANE, 2 WAY				
RADIUS (FT)	15	25	40	30		20	30	50	resurface existing configuration; existing aggregate or earth entrances shall have the continuation of aggregate shoulders placed behind them							
SHOULDER WIDTH (FT)	2	2		2		1	3									
SHOULDER SLOPE (%)	2	4	6	4		2	4	6								
ENTRANCE GRADE (%)	0	2 to 5	10 or 12	2 to 5	10 or 12	0	2 to 5	8 or 10								
SIDE SLOPE (FT)	1:4	1:6	1:10	1:4	1:6	1:4	1:6	1:10								
SURFACE TYPE																
INCIDENTAL HMA SURFACING (INCH)		2		2		3 or 4			taper from hma resurfacing thickness (2 1/2", 2 1/4" or 1 1/2") to 1 1/2" to minimize aggregate shoulder							
AGGREGATE SURFACE COURSE, TYPE B (INCH)		6		6		8			if applicable use items: Preparation of Base & Aggregate Base Repair; see PPM 30-02							
PCC DRIVEWAY PAVEMENT (INCH)		6							6 or 8							

Note: All dimensions are in INCHES (millimeters) unless otherwise shown.

FILE NAME =	USER NAME = craigre	DESIGNED -	REVISED - 12/01/06 TJB
ca\pw_work\PMIDOT\CRAIGRE\d0181509\40800050a.dgn		DRAWN -	REVISED - 09/21/07 KAG
	PLOT SCALE = 40.0000 "/ IN.	CHECKED -	REVISED - 04/30/08 KJT
	PLOT DATE = 1/7/2010	DATE -	REVISED -

**STATE OF ILLINOIS
DEPARTMENT OF TRANSPORTATION**

FIELD ENTRANCES (NONCOMMERCIAL RURAL)

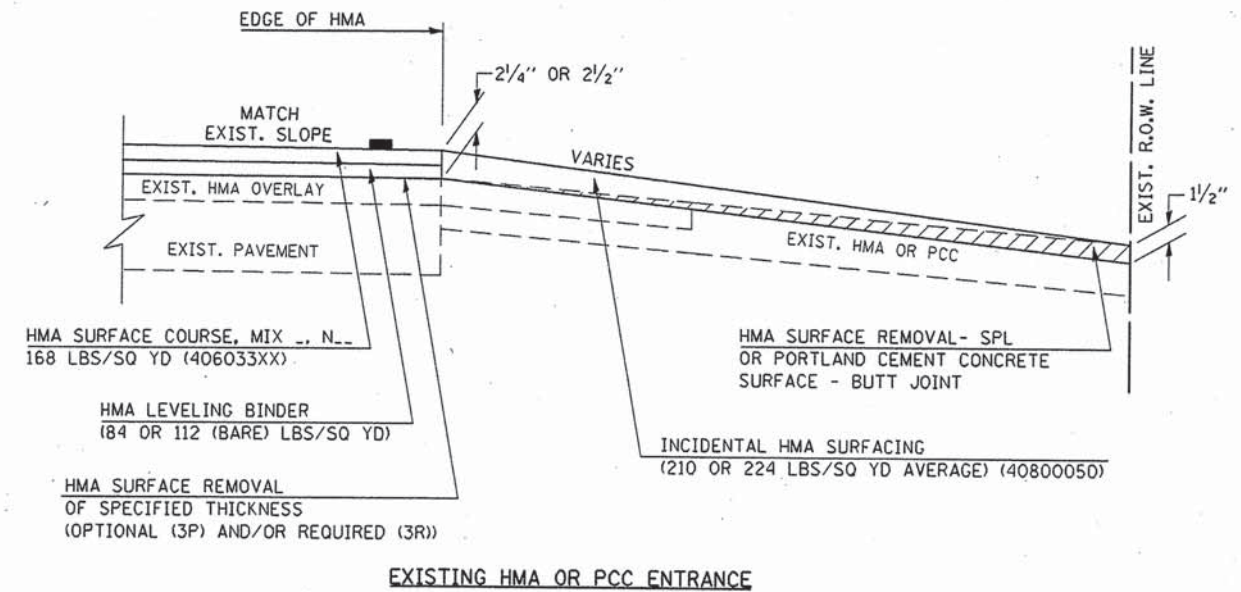
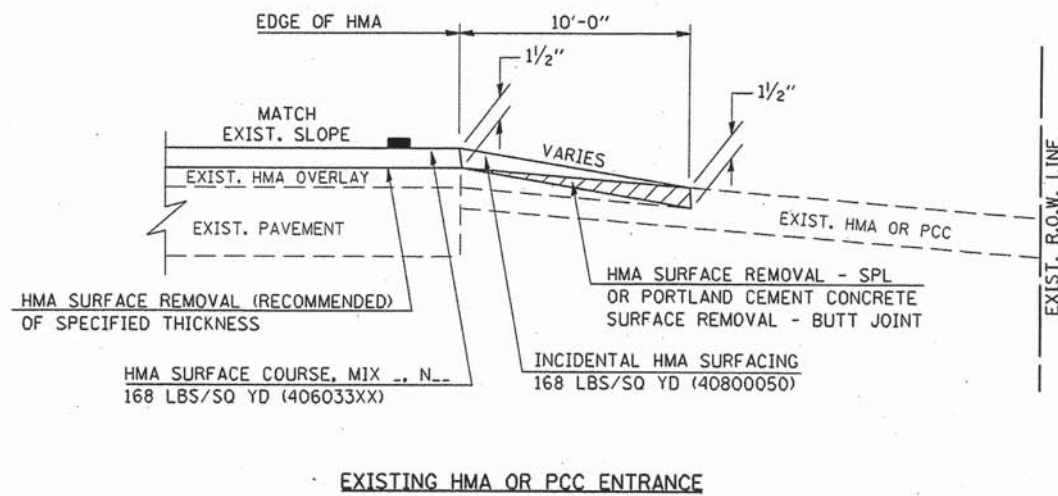
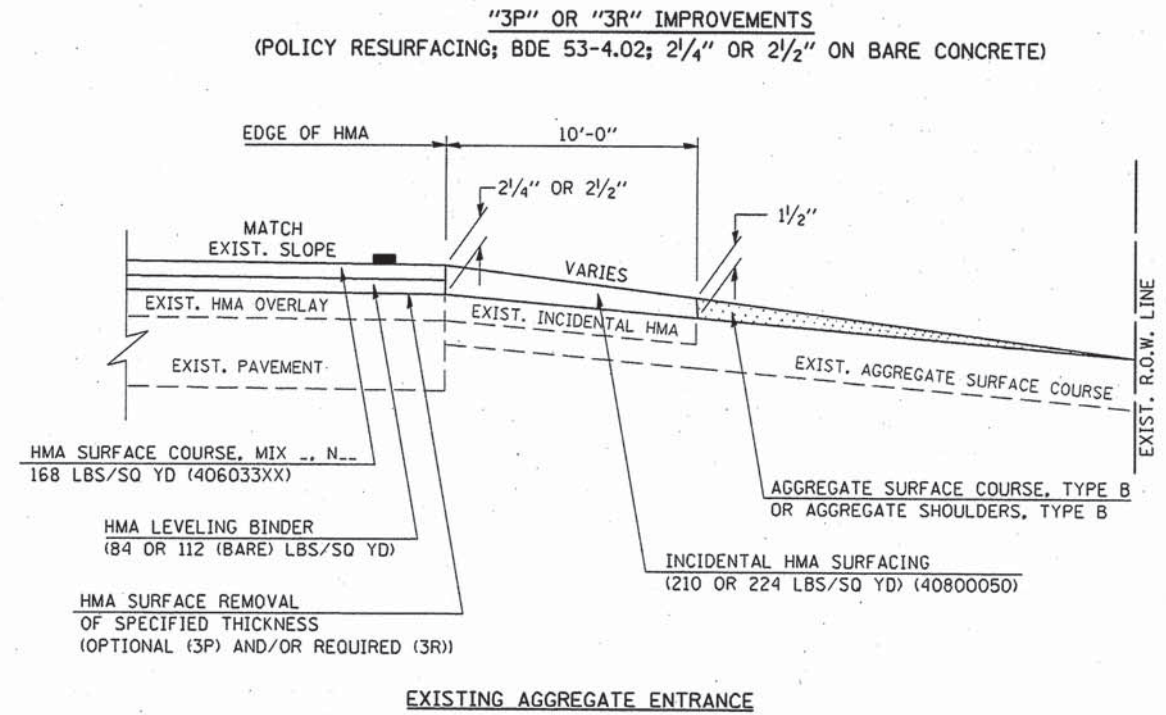
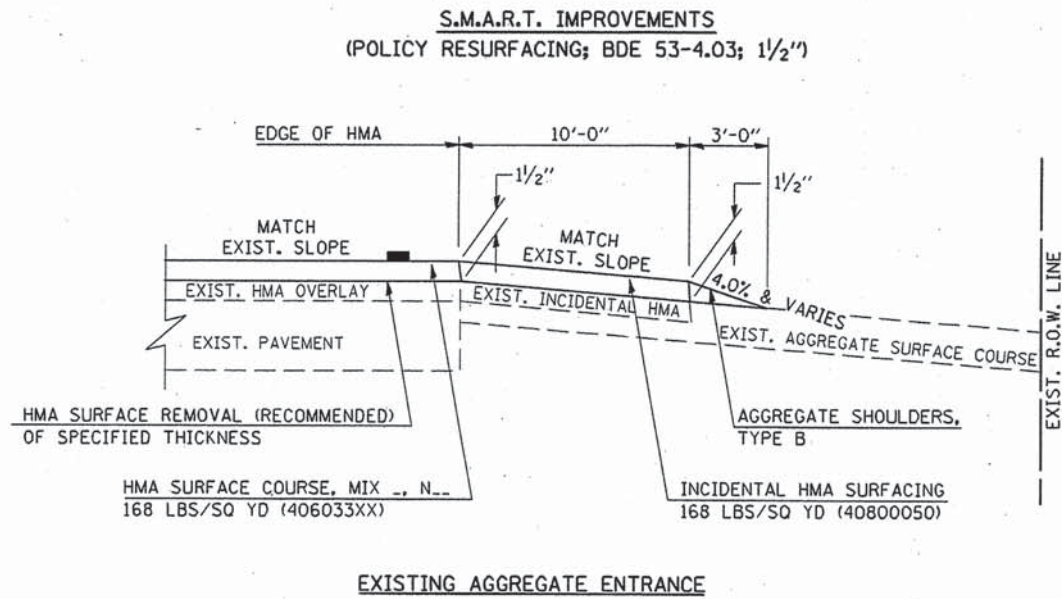
SCALE: NA SHEET NO. 2 OF 2 SHEETS STA. TO STA.

DISTRICT 5 DETAIL NO. 40800050A

F.A. RTE.	SECTION	COUNTY	TOTAL SHEETS	SHEET NO.
			20	17
FED. ROAD DIST. NO.			ILLINOIS FED. AID PROJECT	
			CONTRACT NO. 91524	

DESIGNER NOTE: SEE PLAN PREPARATION MEMORANDUM 40-09

PROJECTS WITHOUT RECONSTRUCTION



Note: All dimensions are in INCHES (millimeters) unless otherwise shown.

FILE NAME =	USER NAME = craigre	DESIGNED -	REVISED - 12/08/06 TJB
ci:\pwork\VP\WIDOT\CRAIGRE\01015091\4000050C.dgn		DRAWN -	REVISED - 09/21/07 KAG
		CHECKED -	REVISED - 05/02/08 KJT
		DATE -	REVISED - 04/23/10 KJT

**STATE OF ILLINOIS
DEPARTMENT OF TRANSPORTATION**

**PRIVATE AND COMMERCIAL ENTRANCES
(NONCOMMERCIAL AND COMMERCIAL RURAL)**

SCALE: NA SHEET NO. 1 OF 2 SHEETS STA. TO STA.

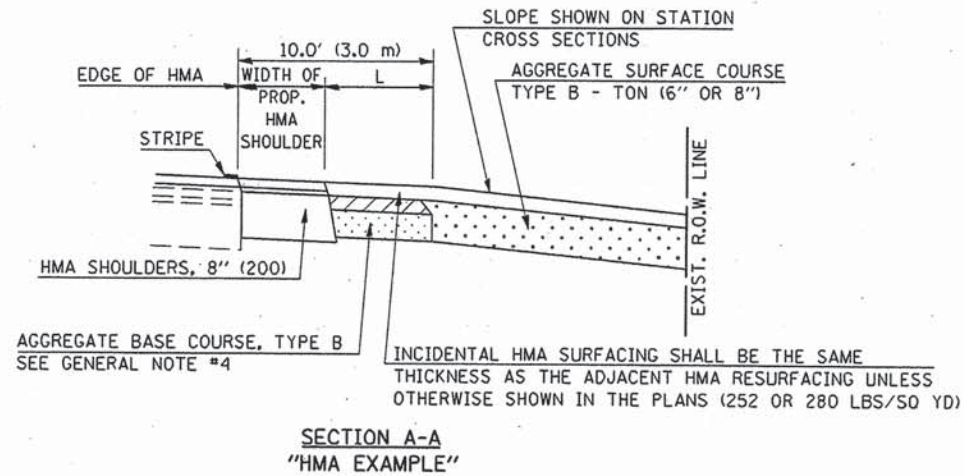
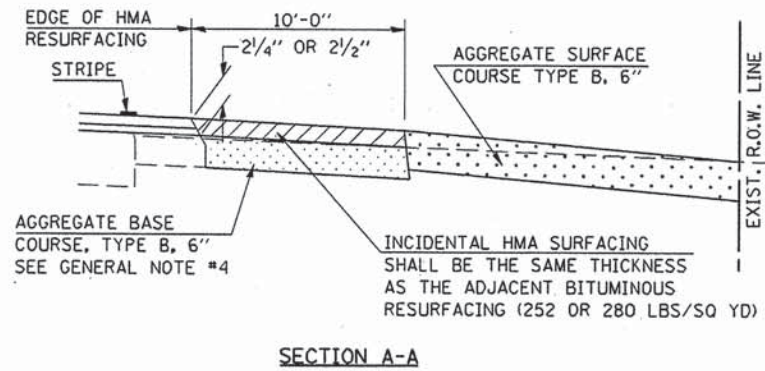
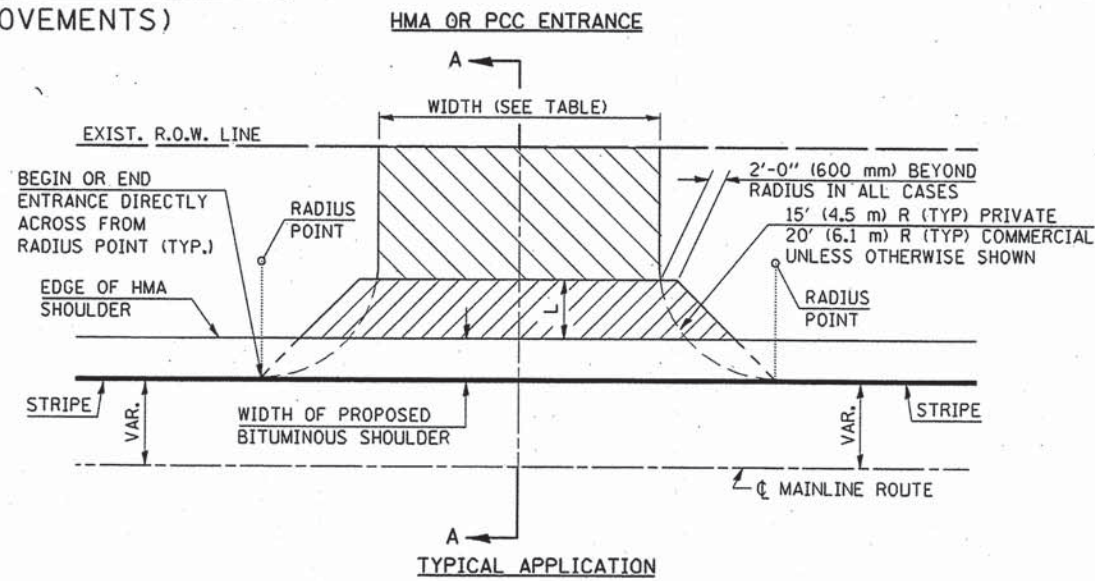
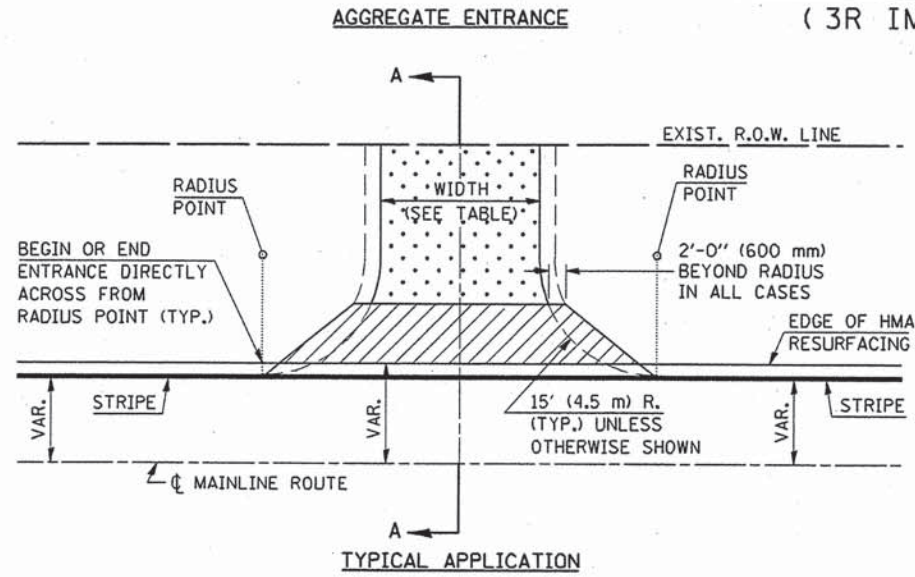
DISTRICT 5 DETAIL NO. 40800050C

F.A. RTE.	SECTION	COUNTY	TOTAL SHEETS	SHEET NO.
			20	18
CONTRACT NO. 91534				
FED. ROAD DIST. NO. ILLINOIS FED. AID PROJECT				

DESIGNER NOTE: SEE PLAN PREPARATION MEMORANDUM 40-09

PROJECTS WITH RECONSTRUCTION

(3R IMPROVEMENTS)



GENERAL NOTES

1. THE EXISTING SURFACE SHALL BE PREPARED IN ACCORDANCE WITH SECTION 408 OF THE STANDARD SPECIFICATIONS.
2. ANY NECESSARY WORK BEHIND THE HMA SHOULDER OR THE INCIDENTAL HMA SURFACING SHALL BE AS SHOWN IN THE PLANS AND/OR AS DIRECTED BY THE ENGINEER.
3. EARTH EXCAVATION REQUIRED FOR THE CONSTRUCTION OF THE AGGREGATE SURFACE COURSE SHALL BE INCLUDED IN THE COST OF AGGREGATE SURFACE COURSE.
4. AGGREGATE BASE COURSE, TYPE B, 6" (150 mm) MIN. SHALL BE USED WHERE IN THE OPINION OF THE ENGINEER THERE IS NOT SUFFICIENT BASE MATERIAL FOR THE PROPOSED ENTRANCES. THIS MATERIAL SHALL GENERALLY BE USED TO WIDEN ANY EXISTING RETURN OR TO CONSTRUCT NEW ENTRANCES WHERE NONE NOW EXISTS.
5. THE AGGREGATE BASE COURSE SHALL BE CONSTRUCTED 12" (300 mm) WIDER THAN THE SURFACE DIMENSIONS AS SHOWN ABOVE.
6. EXISTING FIELD ENTRANCES OF AGGREGATE OR EARTH WITH NO HMA APRON SHALL NOT RECEIVE A NEW HMA APRON WITHOUT PROPER APPROVAL THROUGH THE BUREAU OF OPERATIONS "POLICY ON PERMITS FOR ACCESS DRIVEWAYS TO STATE HIGHWAYS".
7. TO ASSURE APPROPRIATE ACCESS POLICIES ARE FOLLOWED ALL NEW ACCESS SHALL BE APPLIED FOR THROUGH THE BUREAU OF OPERATIONS PERMIT APPLICATION PROCESS. PLAN PREPARATION MEMORANDUMS 40-09 AND 40-11 ALONG WITH DISTRICT CONSTRUCTION MEMORANDUM 03/14 DISCUSS THIS PROCEDURE.

RURAL ENTRANCE DESIGN STANDARDS (PPM 40-09)															
DESIGN ELEMENT	NEW CONSTRUCTION & 3R with RECONSTRUCTION						3R w/out RECONSTRUCTION, 3P, SMART & CM								
	NONCOMMERCIAL			FIELD W/ FARM IMPLEMENTS			COMMERCIAL			NONCOMMERCIAL			COMMERCIAL		
	PRIVATE & FIELD			min.	des.	max.	min.	des.	max.	min.	des.	max.	min.	des.	max.
SURFACE WIDTH (FT)	12	16	24	24	30		1 LANE, 1 WAY				1 LANE, 1 WAY				
							14	16	24		2 LANE, 2 WAY				
							24	30	35		2 LANE, 2 WAY				
RADIUS (FT)	15	25	40	30		20	30	50	resurface existing configuration; existing hma or pcc entrances shall have "butt joints" constructed; existing aggregate or earth entrances shall have the continuation of aggregate shoulders placed behind them						
SHOULDER WIDTH (FT)	2	2		2		1	3								
SHOULDER SLOPE (%)	2	4	6	4		2	4	6							
ENTRANCE GRADE (%)	0	2 to 5	10 or 12	2 to 5	10 or 12	0	2 to 5	8 or 10							
SIDE SLOPE (FT)	1:10	1:8	1:4	1:8	1:4	1:10	1:8	1:4							
SURFACE TYPE															
INCIDENTAL HMA SURFACING (INCH)		2		2		3 or 4			taper from hma resurfacing thickness (2 1/2", 2 1/4" or 1 1/2") to 1 1/2" for "butt joints" and to minimize aggregate shoulder						
AGGREGATE SURFACE COURSE, TYPE B (INCH)		6		6		8			If applicable use Items: Preparation of Base & Aggregate Base Repair; see PPM 30-02						
PCC DRIVEWAY PAVEMENT (INCH)		6						6 or 8							

Note: All dimensions are in INCHES (millimeters) unless otherwise shown.

FILE NAME =	USER NAME = craigre	DESIGNED -	REVISED - 12/08/06 TJB
cr:\p\work\PIWIDOT\CRAIGRE\08101509\40800050C.dgn		DRAWN -	REVISED - 09/21/07 KAG
		CHECKED -	REVISED - 05/02/08 KJT
		DATE -	REVISED -

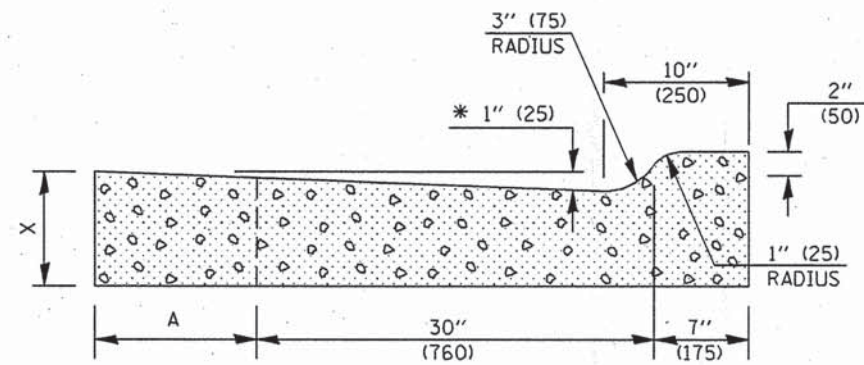
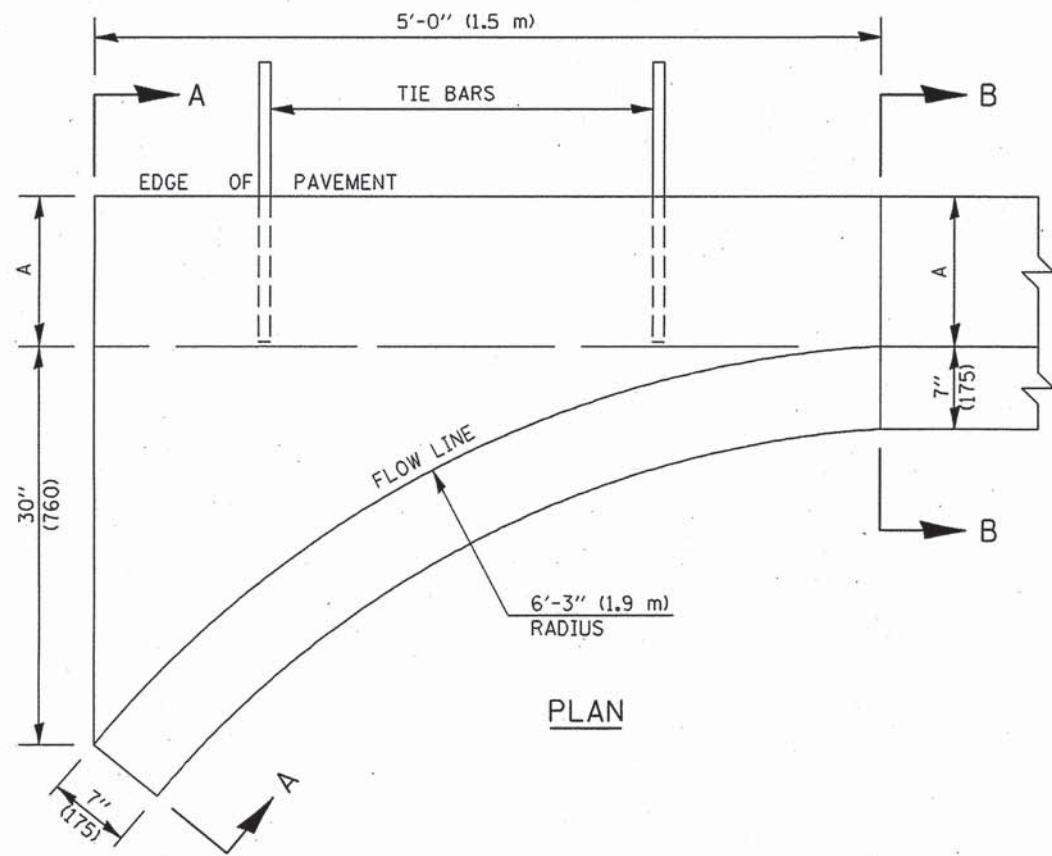
STATE OF ILLINOIS
DEPARTMENT OF TRANSPORTATION

PRIVATE AND COMMERCIAL ENTRANCES
(NONCOMMERCIAL AND COMMERCIAL RURAL)

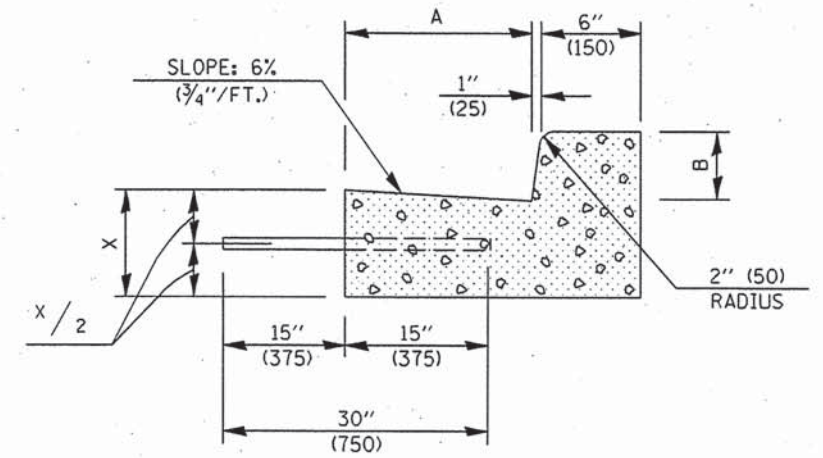
DISTRICT 5 DETAIL NO. 40800050C

F.A. RTE.	SECTION	COUNTY	TOTAL SHEETS	SHEET NO.
			20	19
CONTRACT NO. 91534				
FED. ROAD DIST. NO.		ILLINOIS FED. AID PROJECT		

SCALE: NA SHEET NO. 2 OF 2 SHEETS STA. TO STA.



SECTION A-A



SECTION B-B

* INCREASE TO 2" (50 mm) WHERE IN THE PLANS IT IS SPECIFIED THAT THESE SPECIAL INLETS ARE TO BE CONSTRUCTED AS OUTLETS. ALL OUTLET LOCATIONS WILL BE CONFIRMED BY THE ENGINEER.

GENERAL NOTES

1. CLASS SI CONCRETE SHALL BE USED THROUGHOUT.
2. TIE BARS SHALL BE NO. 6 (NO. 20) AT 24" (600 mm) CENTERS UNLESS OTHERWISE SHOWN. SPECIAL INLETS AND OUTLETS SHALL BE TIED TO THE PAVEMENT IN ACCORDANCE WITH DETAILS FOR LONGITUDINAL CONSTRUCTION JOINT SHOWN ON STANDARD 420001.
3. TIE BARS SHOWN ABOVE WILL NOT BE PAID FOR SEPARATELY BUT SHALL BE CONSIDERED AS INCIDENTAL TO CLASS SI CONCRETE (OUTLET).
4. WHEN SPECIAL INLET IS CONSTRUCTED ADJACENT TO FLEXIBLE PAVEMENT, THE TIE BARS SHALL BE OMITTED AND ALL CONSTRUCTION JOINTS SHALL BE PROVIDED WITH A DOWEL BAR CONFORMING TO ARTICLE 1006.11(b).
5. THIS WORK WILL BE PAID FOR AT THE CONTRACT UNIT PRICE PER CU. YD. (m³) FOR CLASS SI CONCRETE (OUTLET) WHICH PRICE SHALL INCLUDE ALL LABOR AND MATERIAL AS SPECIFIED AND NO ADDITIONAL COMPENSATION WILL BE ALLOWED.

	B-6.12 (B-15.30)	B-9.12 (B-22.30)	B-6.18 (B-15.45)	B-9.18 (B-22.45)	B-6.24 (B-15.60)	B-9.24 (B-22.60)
A	12" (300)	12" (300)	18" (450)	18" (450)	24" (600)	24" (600)
B	6" (150)	9" (225)	6" (150)	9" (225)	6" (150)	9" (225)
X	9" (225)	10" (250)	10" (250)	10" (250)	10" (250)	10" (250)
CU. YD. (m ³)	0.37 (0.28)	0.42 (0.32)	0.44 (0.34)	0.49 (0.37)	0.51 (0.39)	0.52 (0.40)
CLASS SI CONCRETE (OUTLET)						

Note: All dimensions are in INCHES (millimeters) unless otherwise shown.

FILE NAME =	USER NAME = craigo	DESIGNED -	REVISED - 11/06
ci:\pw_work\PMIDOT\CRAIGRE\d0101509\6060095a.dgn		DRAWN -	REVISED -
		CHECKED -	REVISED -
		DATE -	REVISED -

STATE OF ILLINOIS
DEPARTMENT OF TRANSPORTATION

INLET - COMBINATION CONCRETE CURB & GUTTER (BARRIER CURB)

SCALE: SHEET NO. OF SHEETS STA. TO STA.

DISTRICT 5 DETAIL NO. 6060095A

F.A. RTE.	SECTION	COUNTY	TOTAL SHEETS	SHEET NO.
			20	20
CONTRACT NO. 91524				
FED. ROAD DIST. NO. ILLINOIS FED. AID PROJECT				