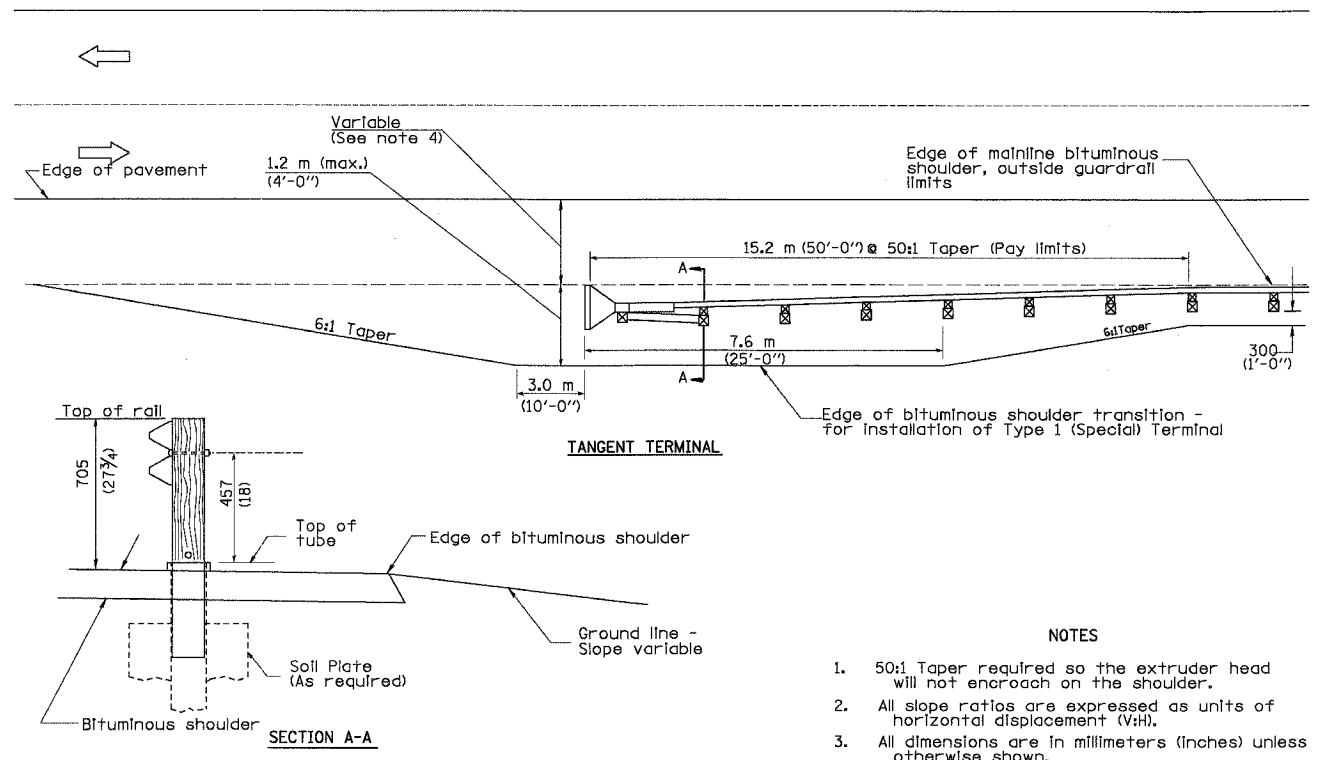


98674

F.A.P. RTE.	SECTION	COUNTY	TOTAL SHEETS	SHEET NO.
869	(103-B)-1	SALINE	34	34
FED. ROAD DIST. NO. 9 ILLINOIS			FED. AID PROJECT	



NOTES

1. 50:1 Taper required so the extruder head will not encroach on the shoulder.
2. All slope ratios are expressed as units of horizontal displacement (V:H).
3. All dimensions are in millimeters (inches) unless otherwise shown.
4. Edge of extruder head shall be placed at the outside edge of mainline bituminous shoulder.

**DETAIL - BITUMINOUS SHOULDER
AT GUARDRAIL TERMINAL**

REVISIONS		ILLINOIS DEPARTMENT OF TRANSPORTATION FAP ROUTE 869 (IL 34) SEC. (103-B)-1, SALINE COUNTY IDOT DISTRICT 9 STANDARD DETAILS
NAME	DATE	