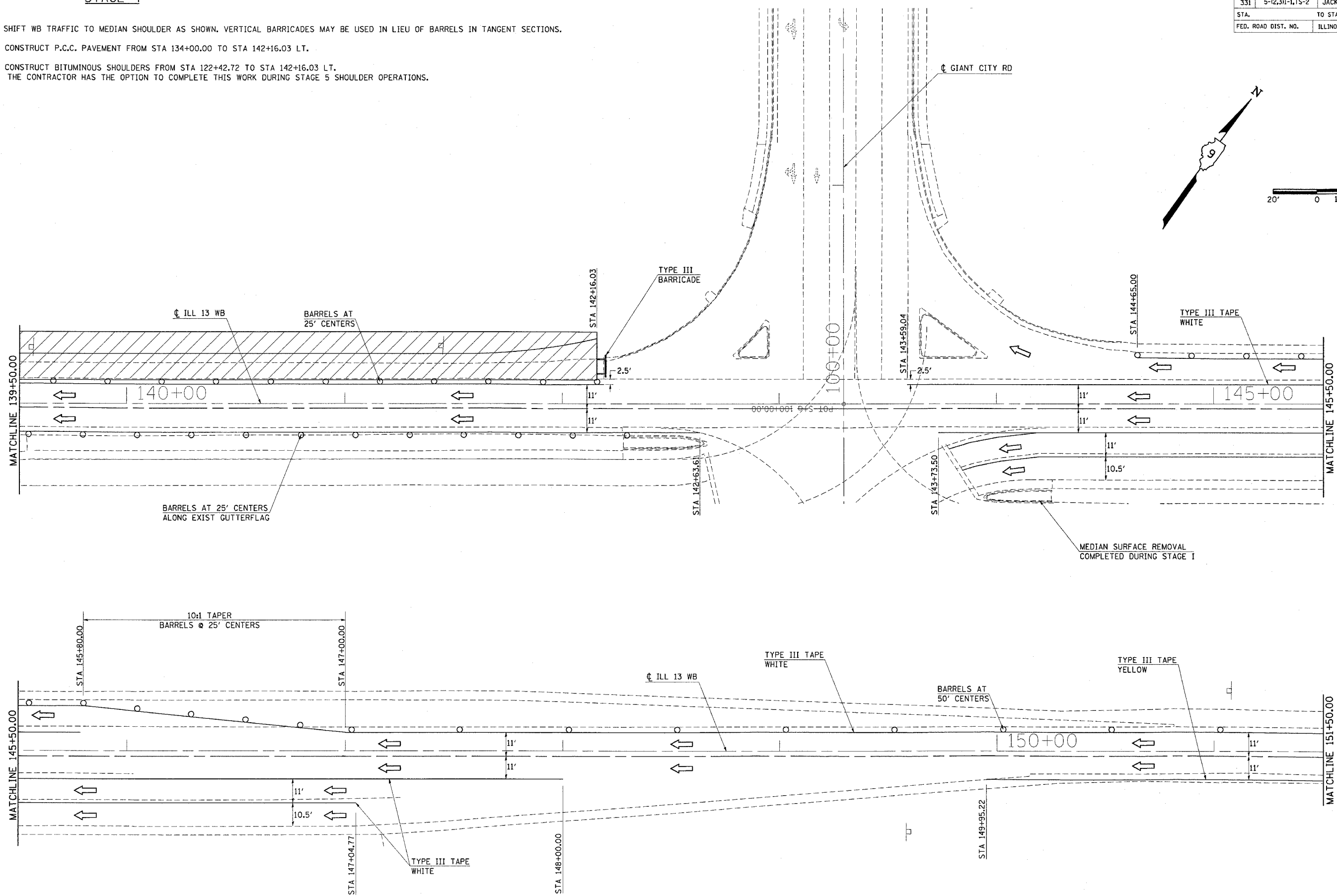
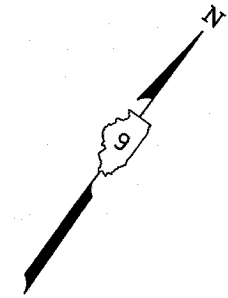
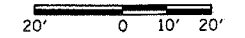


F.A.P. RTE	SECTION	COUNTY	TOTAL SHEETS	SHEET NO
331	5-(2,3)-1,1S-2	JACKSON	94	32
STA. TO STA.		ILLINOIS FED. AID PROJECT		
FED. ROAD DIST. NO.	ILLINOIS	FED. AID PROJECT		

STAGE 4

1. SHIFT WB TRAFFIC TO MEDIAN SHOULDER AS SHOWN. VERTICAL BARRICADES MAY BE USED IN LIEU OF BARRELS IN TANGENT SECTIONS.
2. CONSTRUCT P.C.C. PAVEMENT FROM STA 134+00.00 TO STA 142+16.03 LT.
3. CONSTRUCT BITUMINOUS SHOULDERS FROM STA 122+42.72 TO STA 142+16.03 LT. THE CONTRACTOR HAS THE OPTION TO COMPLETE THIS WORK DURING STAGE 5 SHOULDER OPERATIONS.



Thu Feb 19 15:56:2 2004
 C:\projects\9894903\stage4\stage4.dgn LV=2-63
 DMS:0914903\9894903\stage4\stage4.dgn LV=2-1,2,5,2,1,28
 PLS:0914903\9894903\stage4\stage4.dgn LV=2-1,2,5,2,1,28