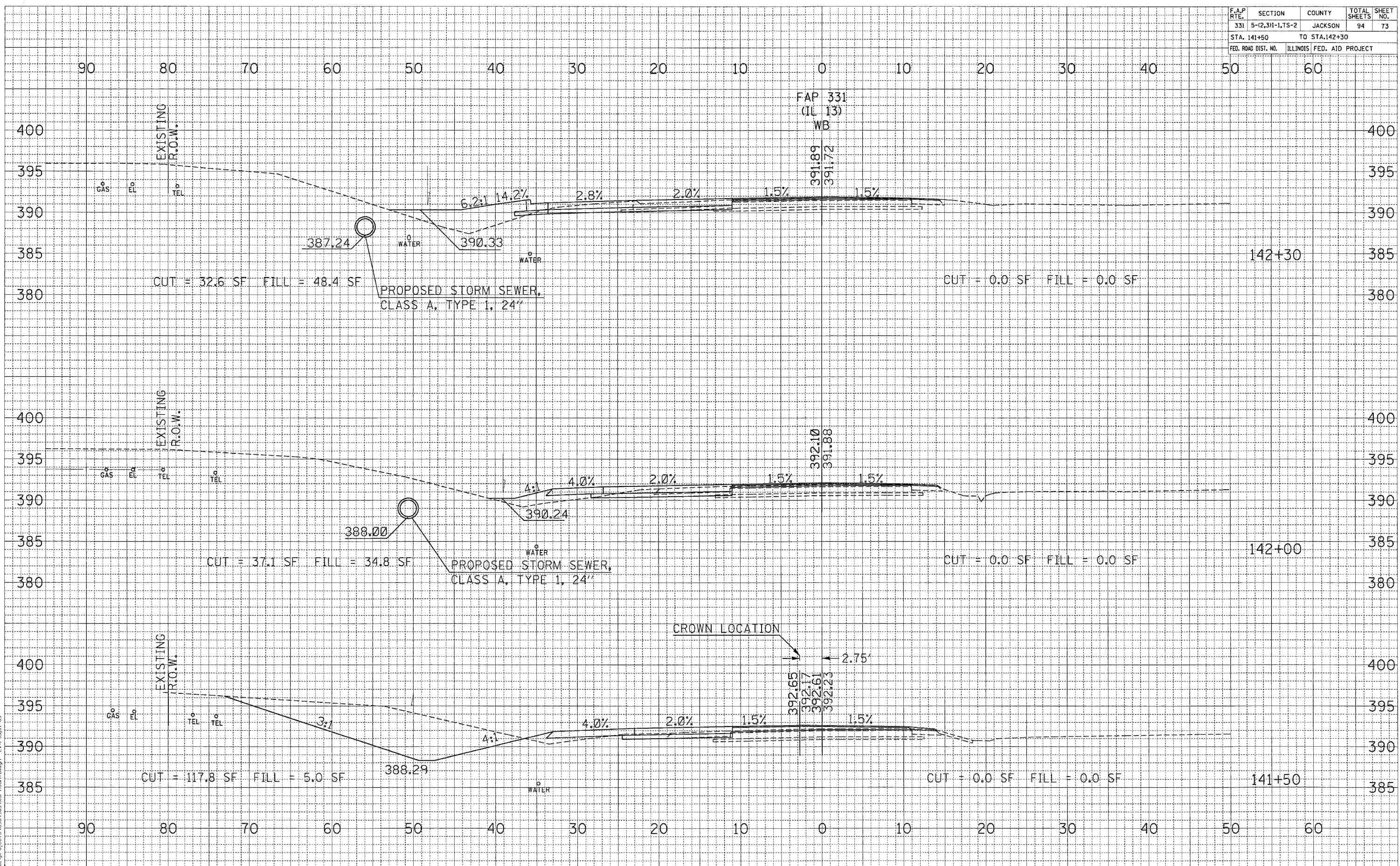


F.A.P. RTE.	SECTION	COUNTY	TOTAL SHEETS	SHEET NO.
331	5-(2,3)1-1,TS-2	JACKSON	94	73
STA. 141+50		TO STA. 142+30		
FED. ROAD DIST. NO.		ILLINOIS FED. AID PROJECT		

DATE	
BY	
NO.	
FINAL SURVEY	
REVISIONS	
NOTED	
PLANNED	
TEMPORARY	
AREAS CHECKED	

DATE	
BY	
NO.	
ORIGINAL SURVEY	
REVISIONS	
NOTED	
PLANNED	
TEMPORARY	
AREAS CHECKED	

Thu Mar 18 09:02:50 2004  
 c:\p\projects\904003\sr\141stb.dgn Lvl=3,7,8,3



**CROSS SECTIONS STA 141+50 TO STA 142+30**