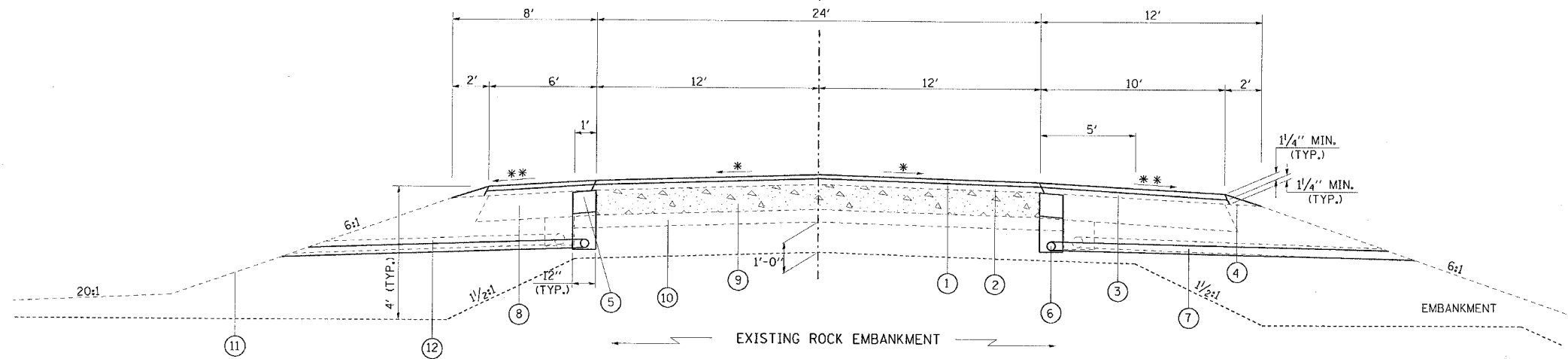


TYPICAL SECTIONS

| F.A.I. SHEET NO. | SECTION | COUNTY | TOTAL SHEETS | SHEET NO. |
|-------------------------------------|---------|---|--------------|-----------|
| 24 | * | JOHNSON | 150 | 8 |
| STA. TO STA. | | FED. ROAD DIST. NO. ILLINOIS FED. AID PROJECT | | |
| *(44-5,6)RS, BSMART FY04-3 98836 | | | | |

EB & WB LANES
F.A.I. RTE 24
LOOKING IN DIRECTION
OF TRAVEL



THE EXISTING SHOULDER SLOPE VARIES
EB 3.6% TO 5.6%
WB 4.6% TO 4.9%
(FIELD MEASUREMENTS DATED
AUG. 19, 25, 27, 2003)

* MATCH EXISTING SLOPE, 1.5% MIN.
** 6% DESIRABLE AND MAX.

THE EXISTING SHOULDER SLOPE VARIES
EB 3.5% TO 6.2%
WB 3.2% TO 5.1%
(FIELD MEASUREMENTS DATED
AUG. 19, 25, 27, 2003)

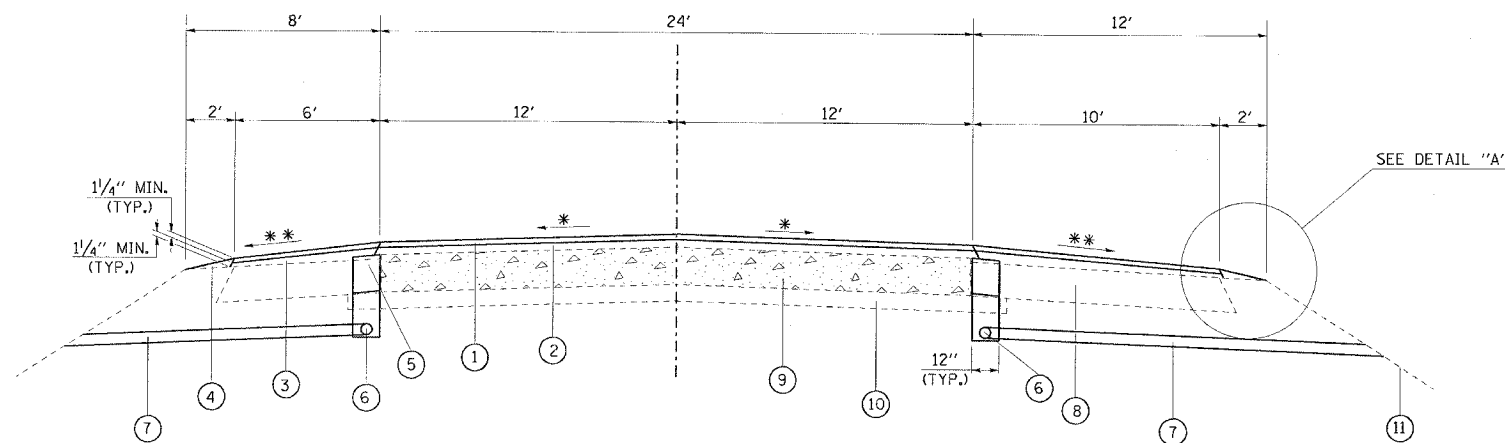
DRAWING NOT TO SCALE

TO BE USED:

- E.B. STA. 380+68 (MP 14.5) TO STA. 408+05.70 (MP 15.0)
- E.B. STA. 427+00 (MP 15.4) TO STA. 429+00 (MP 15.4)
- E.B. STA. 438+00 (MP 15.6) TO STA. 442+43.90 (MP 15.6)
- E.B. STA. 452+50 (MP 15.8) TO STA. 463+00 (MP 16.0)
- E.B. STA. 474+98.61 (MP 16.3) TO STA. 479+00 (MP 16.4)
- E.B. STA. 495+00 (MP 16.6) TO STA. 499+01.37 (MP 16.7)
- EQ. STA. 499+01.37 BK. (MP 16.7) (C MEDIAN) = STA. 78+90.80 AH. (MP 16.7) (C MEDIAN)
- W.B. STA. 380+10 (MP 14.5) TO STA. 408+05.70 (MP 15.0)
- W.B. STA. 427+00 (MP 15.4) TO STA. 429+00 (MP 15.4)
- W.B. STA. 438+00 (MP 15.6) TO STA. 442+40.13 (MP 15.6)
- W.B. STA. 452+50 (MP 15.8) TO STA. 456+46.80 (MP 16.0)
- W.B. STA. 475+65.83 (MP 16.3) TO STA. 479+00 (MP 16.4)
- W.B. STA. 493+92.71 (MP 16.6) TO STA. 499+01.37 (MP 16.7)

- ① PROP. POLY. BIT. CONC. SURF. CSE., SUPERPAVE, MIX. D, N105, 1 1/2"
- ② PROP. POLY. BIT. CONC. BINDER CSE., SUPERPAVE, IL 19.0, N105, 2 1/4"
- ③ PROP. BITUMINOUS SHOULDERS, SUPERPAVE (CONSTRUCT IN TWO LIFTS)
- ④ PROP. AGGREGATE SHOULDERS, TYPE B (WEDGE)
- ⑤ PROP. SHOULDER REMOVAL AND REPLACEMENT, 8"
- ⑥ PROP. PIPE UNDERDRAINS 4"
- ⑦ PROP. PIPE UNDERDRAINS 4" (SPECIAL)
- ⑧ EXIST. BITUMINOUS SHOULDERS
- ⑨ EXIST. 8" C.R.C. PAVEMENT
- ⑩ EXIST. 4" STABILIZED SUB-BASE (BITUMINOUS AGGREGATE MIXTURE)
- ⑪ EXIST. GROUNDLINE
- ⑫ EXIST. 6" PIPE UNDERDRAINS TO BE ABANDONED
- ⑬ EXIST. GRANULAR SUB-BASE, TYPE A
- ⑭ EXIST. AGGREGATE SHOULDER, TYPE A
- ⑮ EXIST. 8" P.C.C. PAVEMENT

EB & WB LANES
F.A.I. RTE 24
LOOKING IN DIRECTION
OF TRAVEL

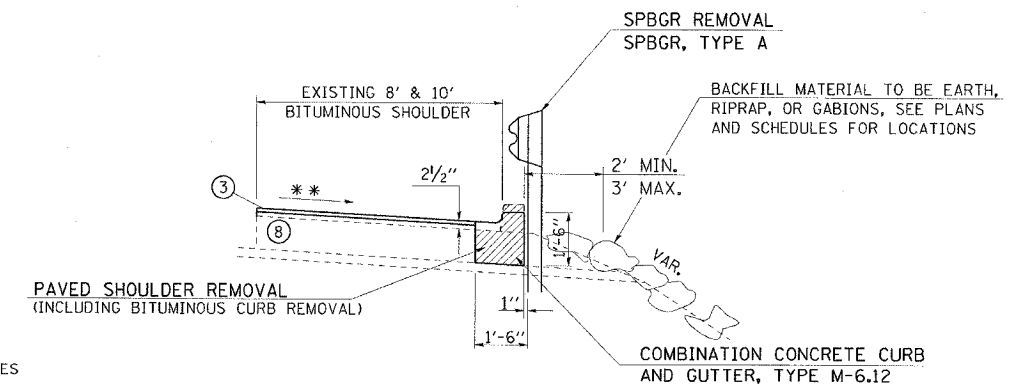


THE EXISTING SHOULDER SLOPE VARIES
EB 3.9% TO 8.5%
WB 4.0% TO 5.5%
(FIELD MEASUREMENTS DATED
AUG. 19, 25, 27, 2003)

EQ. STA. 499+01.37 BK. (MP 16.7) (C MEDIAN) = STA. 78+90.80 AH. (MP 16.7) (C MEDIAN)

THE EXISTING SHOULDER SLOPE VARIES
EB 4.3% TO 6.2%
WB 4.3% TO 5.2%
(FIELD MEASUREMENTS DATED
AUG. 19, 25, 27, 2003)

- TO BE USED:**
- E.B. STA. 78+90.80 (MP 16.7) TO STA. 90+53 (MP 17.0)
 - E.B. STA. 105+50 (MP 17.2) TO STA. 124+00 (MP 17.6)
 - E.B. STA. 130+00 (MP 17.7) TO STA. 197+00 (MP 19.0)
 - E.B. STA. 204+00 (MP 19.1) TO STA. 239+60 (MP 19.7)
 - E.B. STA. 253+25 (MP 20.0) TO STA. 258+37.13 (MP 20.1)
 - E.B. STA. 259+44.29 (MP 20.2) TO STA. 295+00 (MP 20.8)
 - E.B. STA. 303+75 (MP 21.0) TO STA. 312+54 (MP 21.2)
 - E.B. STA. 318+00 (MP 21.3) TO STA. 388+00 (MP 22.6)
 - E.B. STA. 409+00 (MP 23.0) TO STA. 423+00 (MP 23.2)
 - E.B. STA. 431+60 (MP 23.4) TO STA. 457+44.50 (MP 23.9)
 - W.B. STA. 78+90.80 (MP 16.7) TO STA. 90+53 (MP 17.0)
 - W.B. STA. 105+50 (MP 17.2) TO STA. 197+00 (MP 19.0)
 - W.B. STA. 204+00 (MP 19.1) TO STA. 236+52.97 BK. (MP 19.7)
 - W.B. STA. 597+79.11 AH. (MP 19.7) TO STA. 602+50 (MP 19.8)
 - W.B. STA. 615+70 (MP 20.0) TO STA. 619+68.69 (MP 20.1)
 - W.B. STA. 620+84.19 (MP 20.1) TO STA. 752+00 (MP 22.6)
 - W.B. STA. 410+00 (MP 23.0) TO STA. 422+52 (MP 23.2)
 - W.B. STA. 433+00 (MP 23.4) TO STA. 457+46 (MP 23.9)



DETAIL "A"
EXIST. BITUMINOUS CURB LOCATIONS