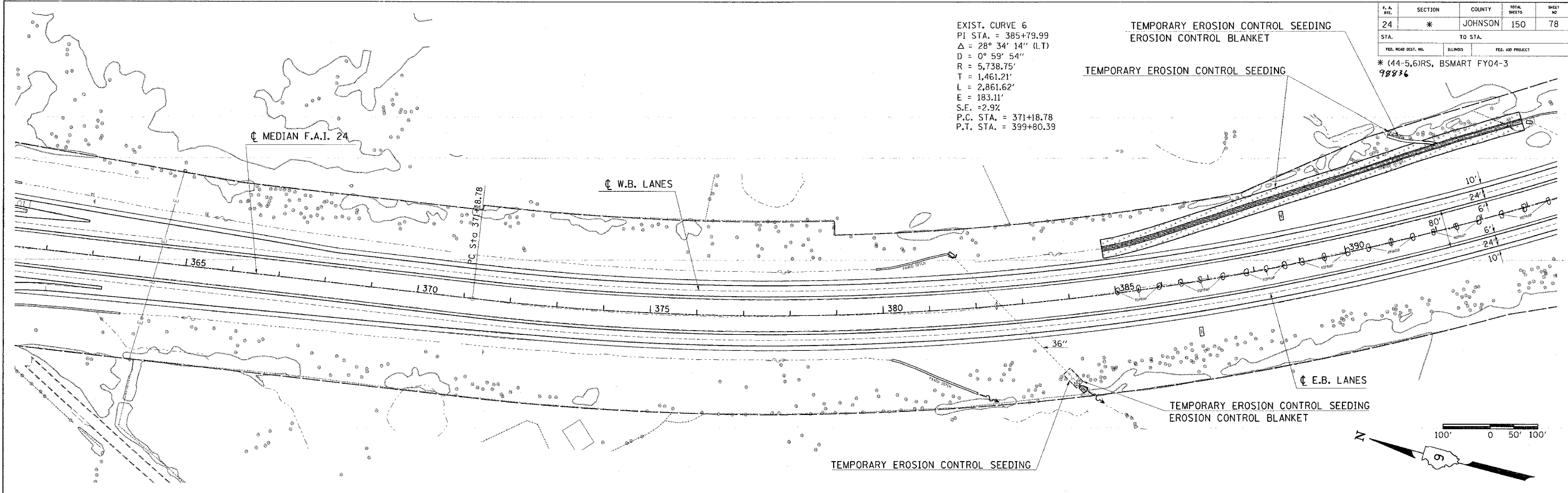


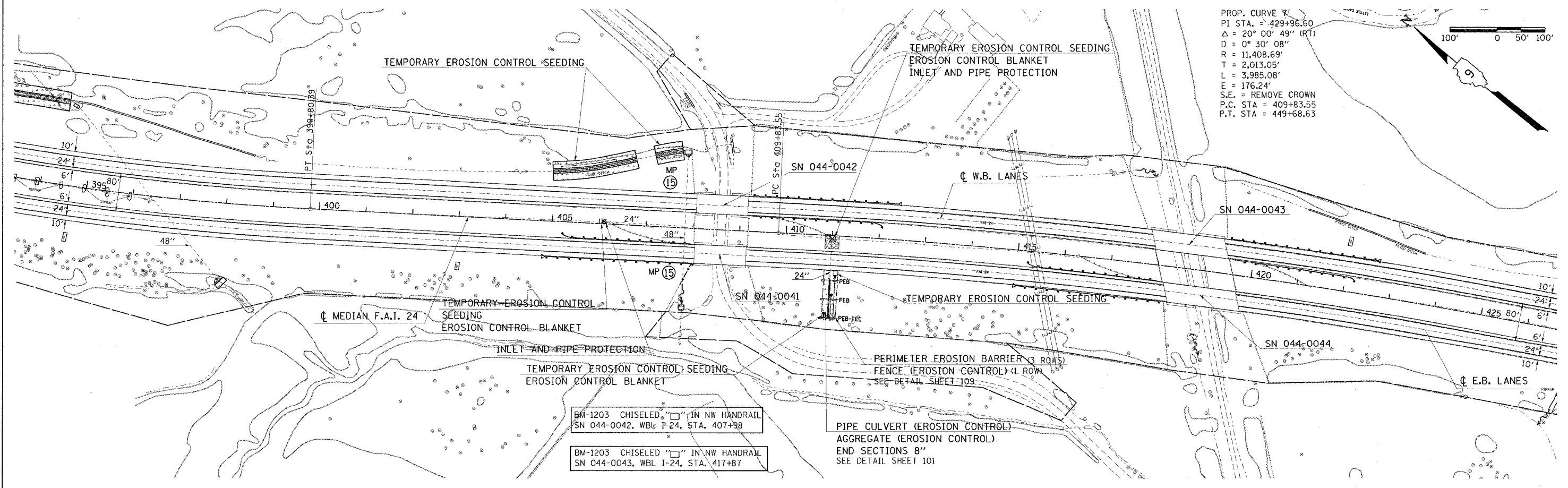
P.A. #	SECTION	COUNTY	TOTAL SHEETS	SHEET NO
24	*	JOHNSON	150	78
STA. TO STA.				
FED. ROAD DIST. NO.		ILLINOIS	FED. AID PROJECT	

* (44-5,6)RS, BSMART FY04-3
98836

EXIST. CURVE 6
 PI STA. = 385+79.99
 $\Delta = 28^\circ 34' 14''$ (LT)
 $D = 0^\circ 59' 54''$
 $R = 5,738.75'$
 $T = 1,461.21'$
 $L = 2,861.62'$
 $E = 183.11'$
 $S.E. = 2.9\%$
 P.C. STA. = 371+18.78
 P.T. STA. = 399+80.39



PROP. CURVE 7
 PI STA. = 429+96.60
 $\Delta = 20^\circ 00' 49''$ (RT)
 $D = 0^\circ 30' 08''$
 $R = 11,408.69'$
 $T = 2,013.05'$
 $L = 3,985.08'$
 $E = 176.24'$
 $S.E. = \text{REMOVE CROWN}$
 P.C. STA. = 409+83.55
 P.T. STA. = 449+68.63



BM-1203 CHISELED "□" IN NW HANDRAIL
 SN 044-0042, WBL P-24, STA. 407+98

BM-1203 CHISELED "□" IN NW HANDRAIL
 SN 044-0043, WBL I-24, STA. 417+87

PIPE CULVERT (EROSION CONTROL)
 AGGREGATE (EROSION CONTROL)
 END SECTIONS 8"
 SEE DETAIL SHEET 101

TEMPORARY EROSION CONTROL STA. 362+00 TO STA. 426+00

Thu Jun 29 08:52:02 2004
 c:\projects\440002\440002.dwg LV=5:22:24-35:37-47:52-63
 DWS: D:\2002\440002\440002.dwg LV=5:22:24-35:37-47:52-63
 DWS: D:\2002\440002\440002.dwg LV=5:22:24-35:37-47:52-63

Thu Jun 29 08:52:02 2004
 c:\projects\440002\440002.dwg LV=5:22:24-35:37-47:52-63
 DWS: D:\2002\440002\440002.dwg LV=5:22:24-35:37-47:52-63
 DWS: D:\2002\440002\440002.dwg LV=5:22:24-35:37-47:52-63