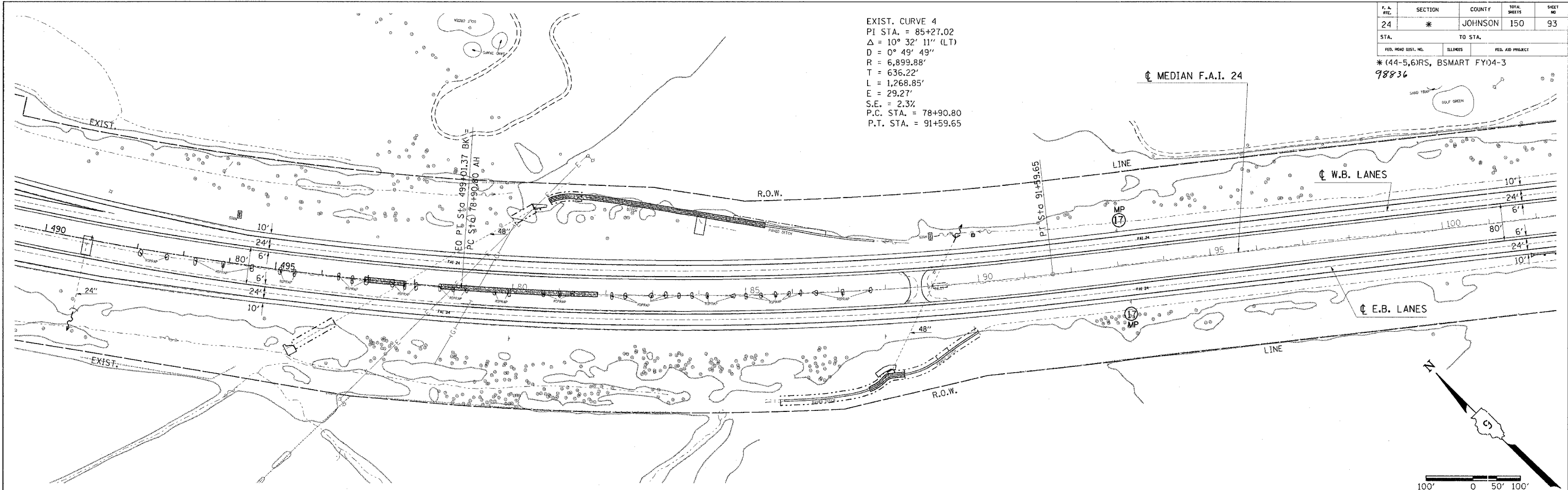


F. A. RFL.	SECTION	COUNTY	TOTAL SHEETS	SHEET NO
24	*	JOHNSON	150	93

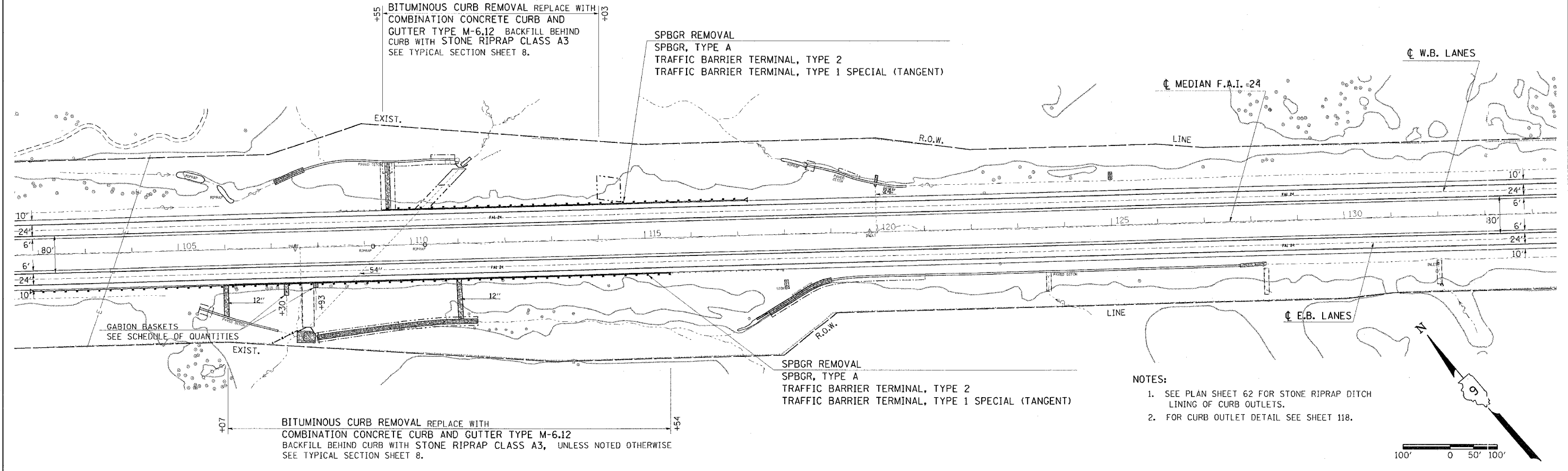
STA. TO STA.
 * (44-5,6)RS, BSMART FY04-3
 98836

EXIST. CURVE 4
 PI STA. = 85+27.02
 $\Delta = 10^\circ 32' 11''$ (LT)
 $D = 0^\circ 49' 49''$
 $R = 6,899.88'$
 $T = 636.22'$
 $L = 1,268.85'$
 $E = 29.27'$
 $S.E. = 2.3\%$
 $P.C. STA. = 78+90.80$
 $P.T. STA. = 91+59.65$



+55
 BITUMINOUS CURB REMOVAL REPLACE WITH
 COMBINATION CONCRETE CURB AND
 GUTTER TYPE M-6.12 BACKFILL BEHIND
 CURB WITH STONE RIPRAP CLASS A3
 SEE TYPICAL SECTION SHEET 8.

SPBGR REMOVAL
 SPBGR, TYPE A
 TRAFFIC BARRIER TERMINAL, TYPE 2
 TRAFFIC BARRIER TERMINAL, TYPE 1 SPECIAL (TANGENT)



GABION BASKETS
 SEE SCHEDULE OF QUANTITIES

+07
 BITUMINOUS CURB REMOVAL REPLACE WITH
 COMBINATION CONCRETE CURB AND GUTTER TYPE M-6.12
 BACKFILL BEHIND CURB WITH STONE RIPRAP CLASS A3, UNLESS NOTED OTHERWISE
 SEE TYPICAL SECTION SHEET 8.

SPBGR REMOVAL
 SPBGR, TYPE A
 TRAFFIC BARRIER TERMINAL, TYPE 2
 TRAFFIC BARRIER TERMINAL, TYPE 1 SPECIAL (TANGENT)

- NOTES:
- SEE PLAN SHEET 62 FOR STONE RIPRAP DITCH LINING OF CURB OUTLETS.
 - FOR CURB OUTLET DETAIL SEE SHEET 118.

Set Jan 17 4:00:59 2004
 c:\p\projects\4850202\c9020202.dgn LV=2,4-20,22,24-35,37-48,52-63
 DMS:1902020202020202.dgn,254A LV=2,10,22,24-35,37-48,51-62
 DMS:1902020202020202.dgn,257P LV=25,33-59,61-63

Set Jan 17 4:00:59 2004
 c:\p\projects\4850202\c9020202.dgn LV=2,4-20,22,24-35,37-48,52-63
 DMS:1902020202020202.dgn,254A LV=2,10,22,24-35,37-48,51-63
 DMS:1902020202020202.dgn,257P LV=25,33-59,61-63