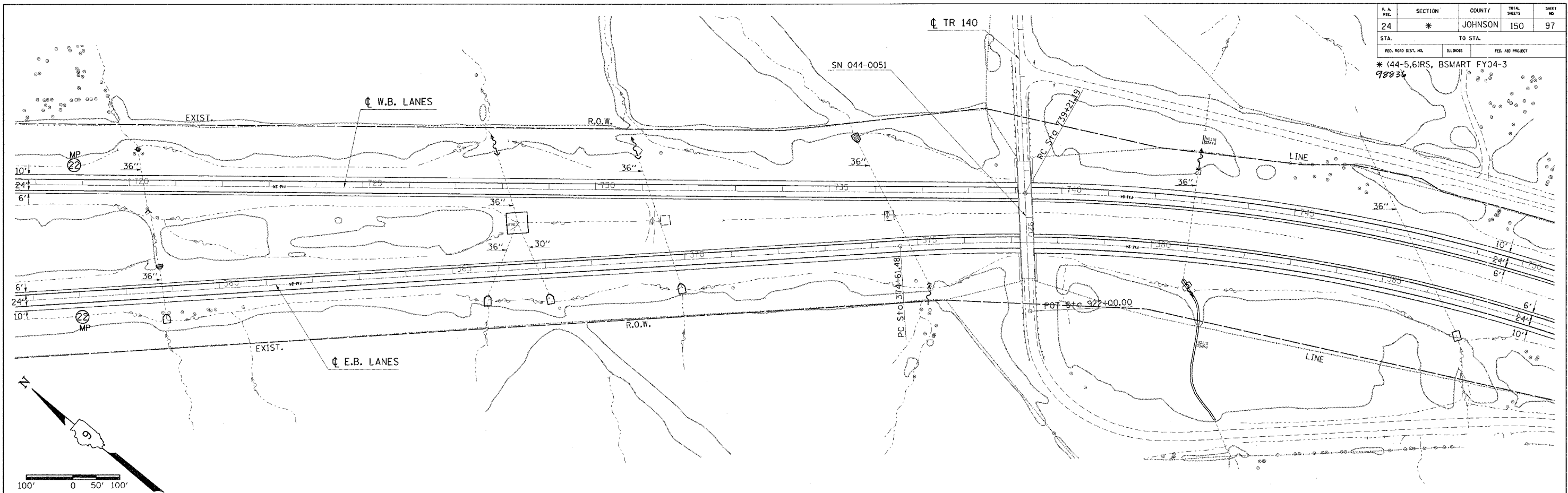
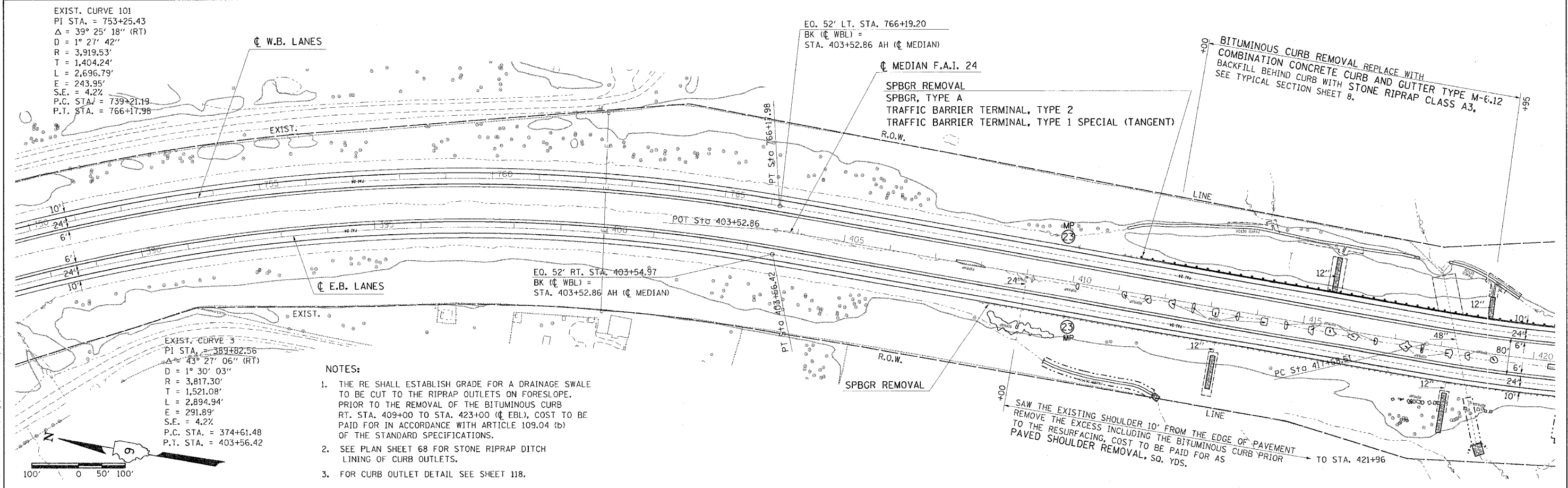
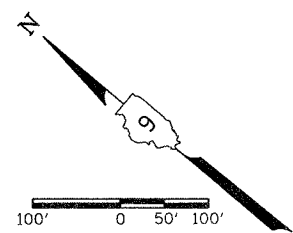


P.A. REL.	SECTION	COUNT	TOTAL SHEETS	SHEET NO.
24	*	JOHNSON	150	97
STA. TO STA.				
FED. ROAD DIST. NO.				
ILLINOIS				
FED. AID PROJECT				

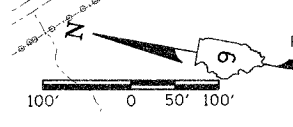
\* (44-5,6)RS, BSMART FY04-3  
98834



SPT JUN 17 14:49:41 2004  
 C:\p0\projects\980202\c0\0202p3.dgn LV:2,4-20,22,24-35,37-49,52-63  
 DMS: D90202d90202p3.dgn, 1344 LV:2-15,2,24-35,37-48,51-62  
 DMS: D90202d90202p3.dgn, 1344 LV:2-15,2,24-35,37-48,51-62



SPT JUN 17 14:49:41 2004  
 C:\p0\projects\980202\c0\0202p3.dgn LV:2,4-20,22,24-35,37-49,52-63  
 DMS: D90202d90202p3.dgn, 1344 LV:2-15,2,24-35,37-48,51-62  
 DMS: D90202d90202p3.dgn, 1344 LV:2-15,2,24-35,37-48,51-62



**SAFETY PLANS: STA. 356+00 TO STA. 420+00 (EB)**  
**SAFETY PLANS: STA. 718+00 TO STA. 420+00 (WB)**