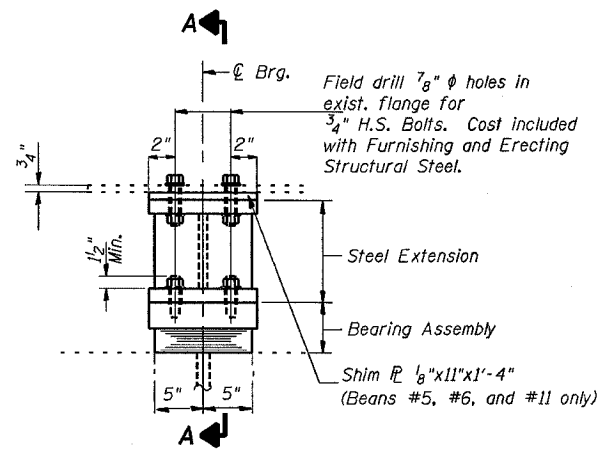
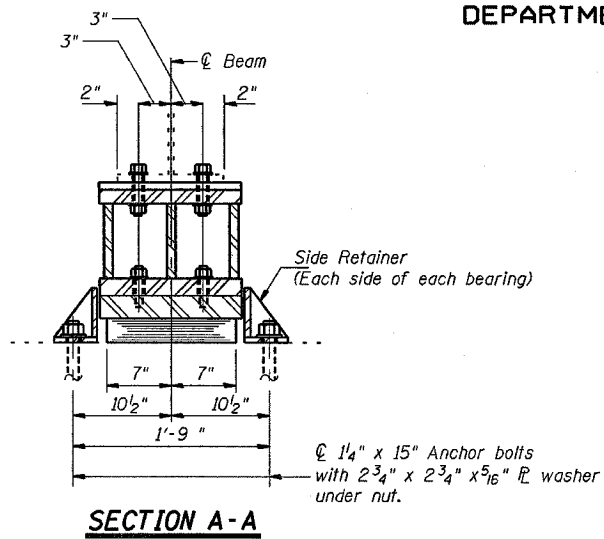


STATE OF ILLINOIS
DEPARTMENT OF TRANSPORTATION

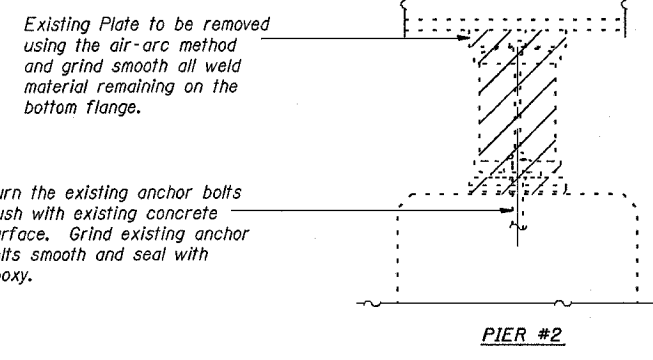
ROUTE NO.	SECTION	COUNTY	SCALE	SHEET
F.A.I. 24	*	JOHNSON	150	129
FED. ROAD DIST. NO. 7	ILLINOIS		FED. AID PROJECT-	
* BSMART FY 04-3 98B36				



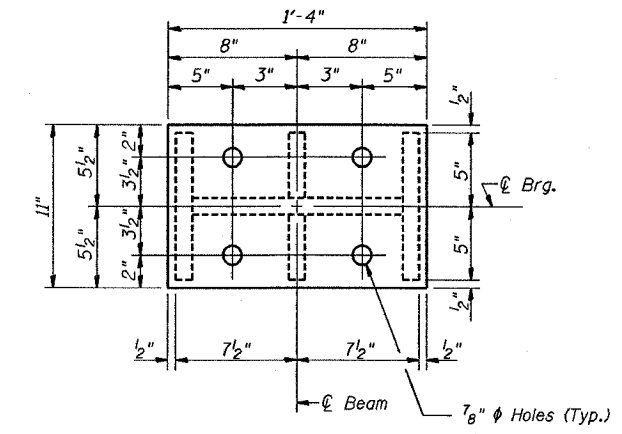
ELEVATION AT PIER #2



SECTION A-A



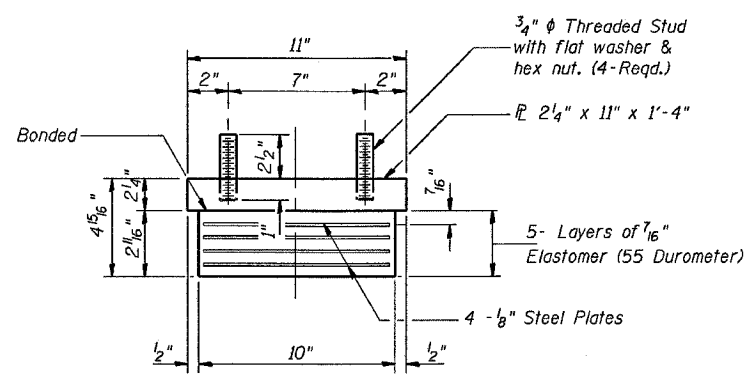
EXISTING BEARING REMOVAL DETAILS
Cost is included with Jack and Remove Existing Bearings



PLAN-TOP & BOTTOM PLATE

TYPE I ELASTOMERIC EXP. BRG.

Notes: See sheet 132 for Anchor Bolt installation.

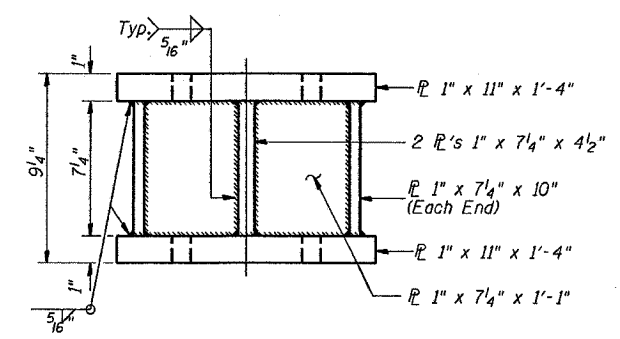


BEARING ASSEMBLY

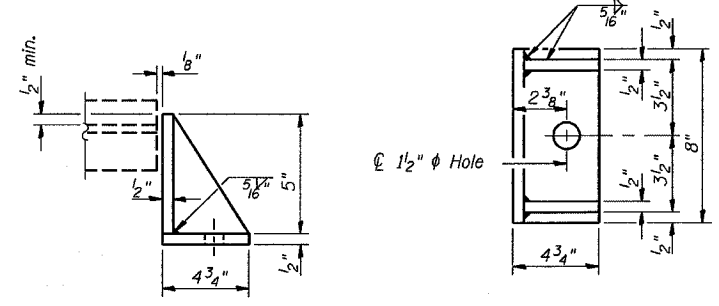
Note: Shim plates shall not be placed under Bearing Assembly.

GIRDER REACTIONS

R ₀	(K)	50.5
R ₁	(K)	42.9
Imp.	(K)	12.9
R (Total)	(K)	106.3



STEEL EXTENSION AT PIER #2



SIDE RETAINER

Equivalent rolled angle with stiffeners will be allowed in lieu of welded plates. Weight included with Furnishing and Erecting Structural Steel.

Notes: Prior to ordering any material, the Contractor shall verify in the field all bearing height and shim thickness dimensions. The minimum jack capacity required is 60 Tons. New steel extensions, side retainers, connection bolts, anchor bolts, and shim plates are included in "Furnishing and Erecting Structural Steel". Hatched areas indicate Jack and Remove Existing Bearings. Existing diaphragm removal may be required to provide clearance for the drill during drilling holes in the bottom flange for new bearing attachment. Cost shall be included in the cost of "Furnishing and Erecting Structural Steel".

DESIGNED:	MAS
CHECKED:	MAS
DRAWN:	JB
CHECKED:	MAS

BILL OF MATERIAL

Item	Unit	Total
Elastomeric Bearing Assembly Type I	Each	12
Jack and Remove Existing Bearings	Each	12

PIER #2
TYPE I ELASTOMERIC BEARING
JOHNSON COUNTY
S.N. 044-0041 (E.B.)
S.N. 044-0042 (W.B.)