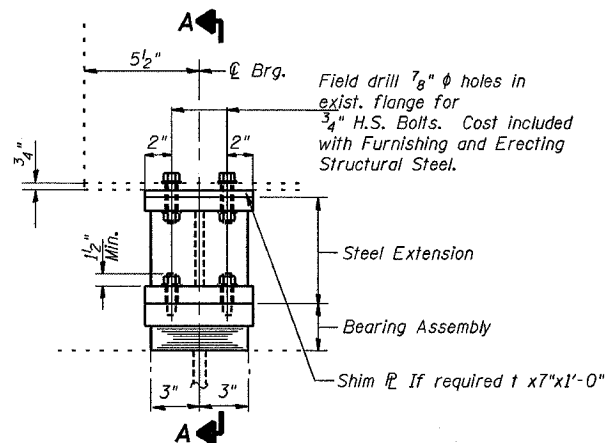
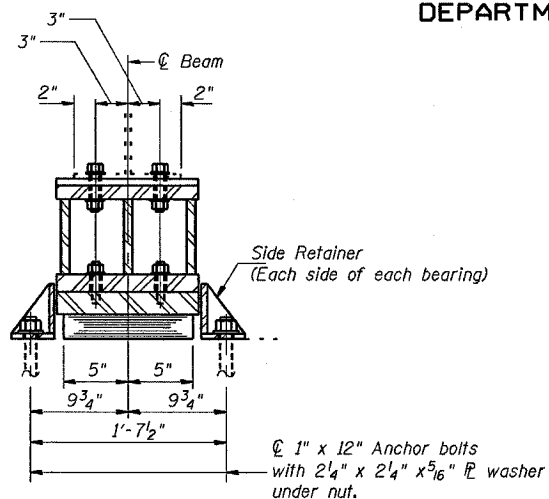


STATE OF ILLINOIS  
DEPARTMENT OF TRANSPORTATION

ROUTE NO.	SECTION	COUNTY	SCALE	SHEET
F.A.I. 24	*	JOHNSON	150	130
FED. ROAD DIST. NO. 7		ILLINOIS	FED. AID PROJECT	
* BSMART FY 04-3 98836				



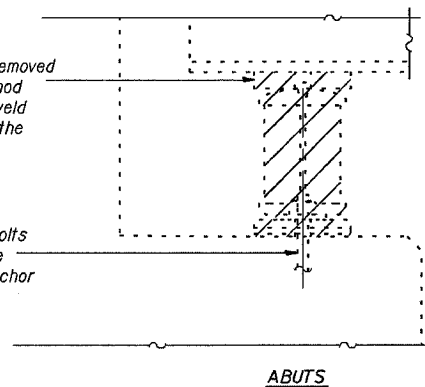
**ELEVATION AT S. ABUT.**



**SECTION A-A**

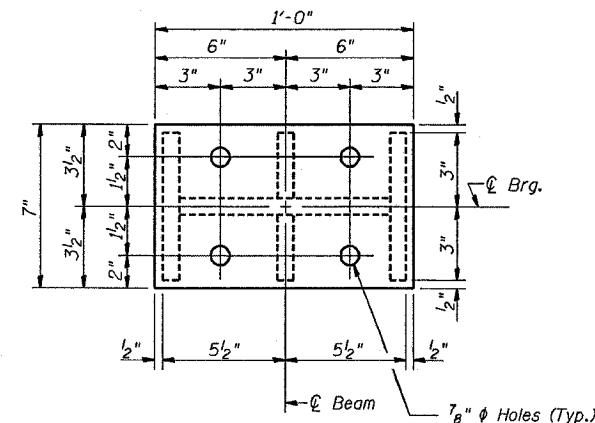
Existing Plate to be removed using the air-arc method and grind smooth all weld material remaining on the bottom flange.

Burn the existing anchor bolts flush with existing concrete surface. Grind existing anchor bolts smooth and seal with epoxy.



**EXISTING BEARING REMOVAL DETAILS**

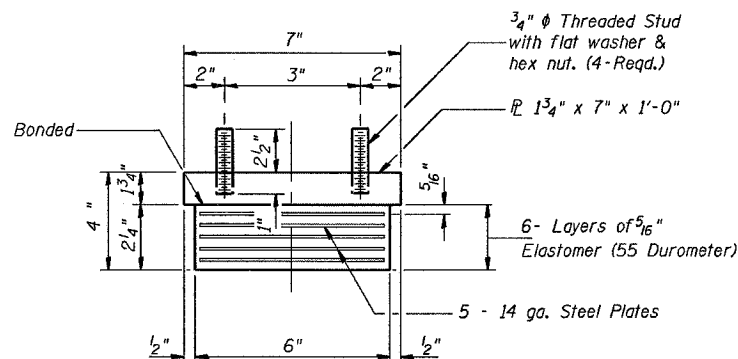
Cost is included with Jack and Remove Existing Bearings



**PLAN-TOP & BOTTOM PLATE**

**TYPE I ELASTOMERIC EXP. BRG.**

Notes: See sheet 132 for Anchor Bolt Installation.

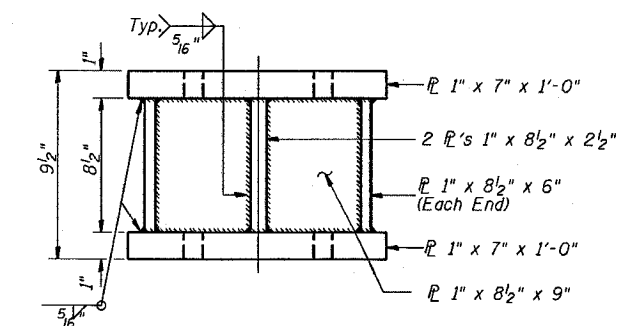


**BEARING ASSEMBLY**

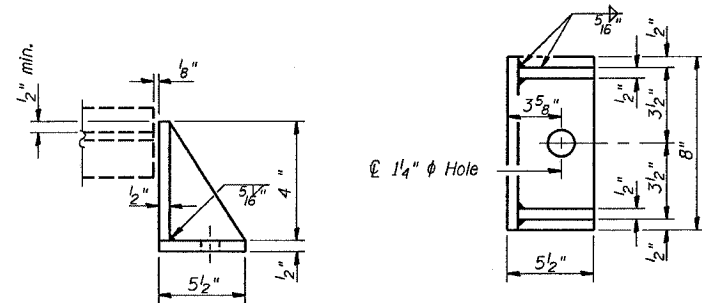
Note: Shim plates shall not be placed under Bearing Assembly.

**GIRDER REACTIONS**

R <sub>P</sub>	(K)	11.8
R <sub>E</sub>	(K)	31.0
Imp.	(K)	9.3
R (Total)	(K)	52.1



**STEEL EXTENSION AT SOUTH ABUT.**



**SIDE RETAINER**

Equivalent rolled angle with stiffeners will be allowed in lieu of welded plates. Weight included with Furnishing and Erecting Structural Steel.

Notes: Prior to ordering any material, the Contractor shall verify in the field all bearing height and shim thickness dimensions. The minimum jack capacity required is 30 Tons. New steel extensions, side retainers, connection bolts, anchor bolts, and shim plates are included in "Furnishing and Erecting Structural Steel". Hatched areas indicate Jack and Remove Existing Bearings. Existing diaphragm removal may be required to provide clearance for the drill during drilling holes in the bottom flange for new bearing attachment. Cost shall be included in the cost of "Furnishing and Erecting Structural Steel".

DESIGNED:	MAS
CHECKED:	MAS
DRAWN:	JB
CHECKED:	MAS

**BILL OF MATERIAL**

Item	Unit	Total
Elastomeric Bearing Assembly Type I	Each	6
Jack and Remove Existing Bearings	Each	6

**SOUTH ABUTMENT  
TYPE I ELASTOMERIC BEARING  
JOHNSON COUNTY  
S.N. 044-0041 (E.B.)**