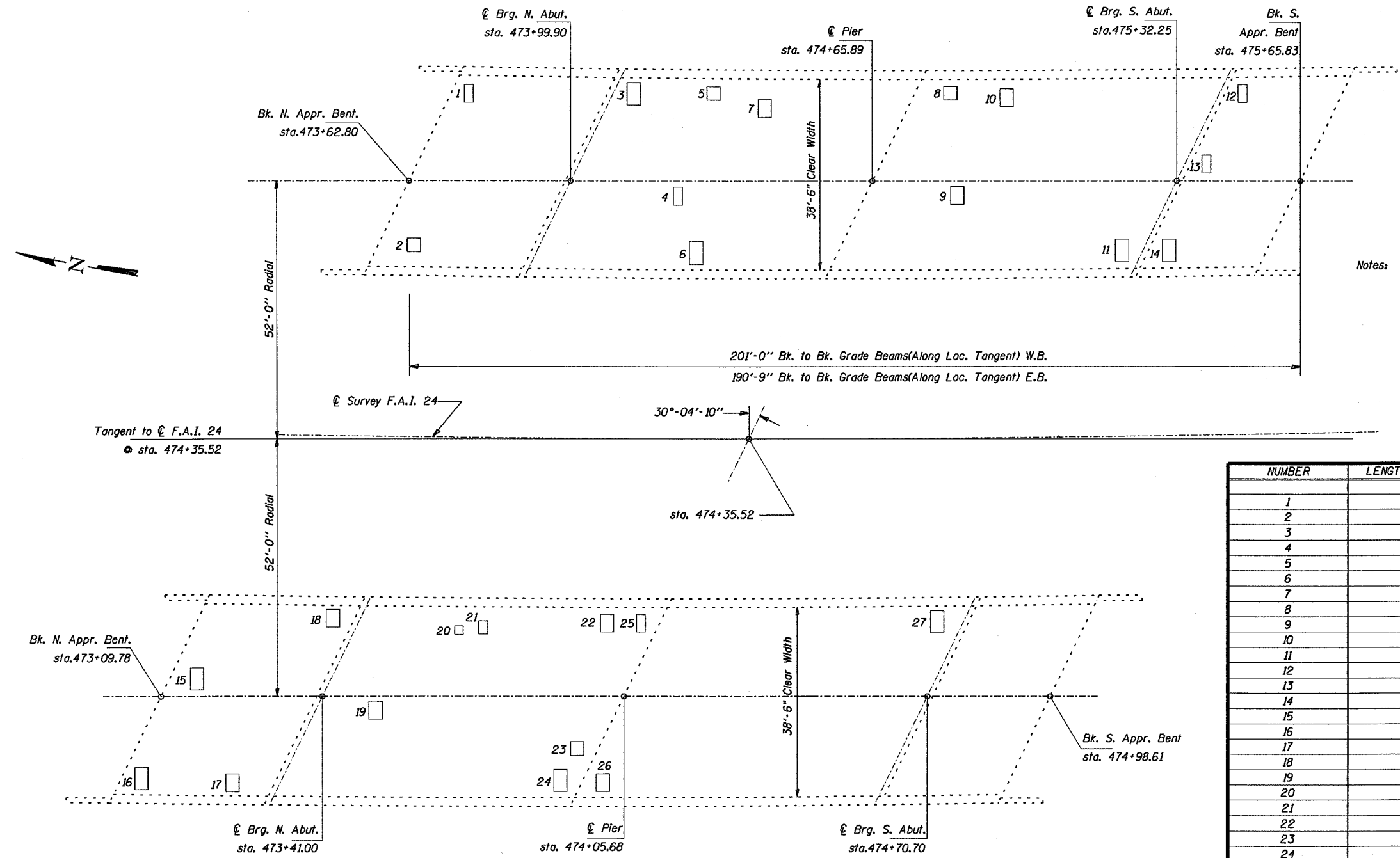


STATE OF ILLINOIS  
DEPARTMENT OF TRANSPORTATION

P.L. & SHEET	SECTION	COUNTY	TOTAL SHEETS	SHEET NO.
24	#	JOHNSON	150	143
STA.	TO STA.			
FED. ROAD DIST. NO.	ILLINOIS	FED. AID PROJECT		

\* BSMART FY04-3  
98836



Notes: Deck sounding was performed in July 2003.

Quantities shown in the plans for patching are estimates. The Resident Engineer will determine final patch locations and quantities in the field before bridge deck patching operations begin.

The Resident Engineer will mark the plan view for the deck repairs to be incorporated in the as built plans.

NUMBER	LENGTH (FT)	WIDTH (FT)	AREA (SQ YD)
1	2	4	0.9
2	3	3	1
3	3	5	1.7
4	2	4	0.9
5	3	3	1
6	3	5	1.7
7	3	4	1.3
8	3	3	1
9	3	4	1.3
10	3	4	1.3
11	3	5	1.7
12	2	4	0.9
13	2	4	0.9
14	3	5	1.7
15	3	5	1.7
16	3	5	1.7
17	3	4	1.3
18	3	4	1.3
19	3	4	1.3
20	2	2	0.4
21	2	3	0.7
22	3	4	1.3
23	3	3	1
24	3	5	1.7
25	2	4	0.9
26	3	4	1.3
27	3	5	1.7

BILL OF MATERIAL

Item	Unit	Total	0047	0048
Deck Slab Repair (Partial Depth)	Sq. Yd.	33.6	16.3	17.3

DECK PATCHING DETAILS  
JOHNSON COUNTY  
SN 044-0047 (E.B.)  
SN 044-0048 (W.B.)

DESIGNED	TWH MAS
CHECKED	MAS
DRAWN	TWH TEB
CHECKED	TWH MAS