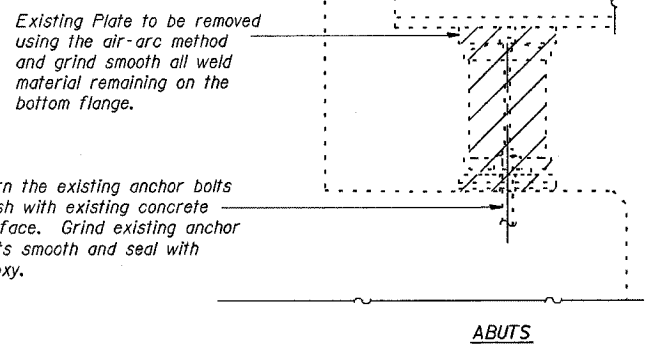
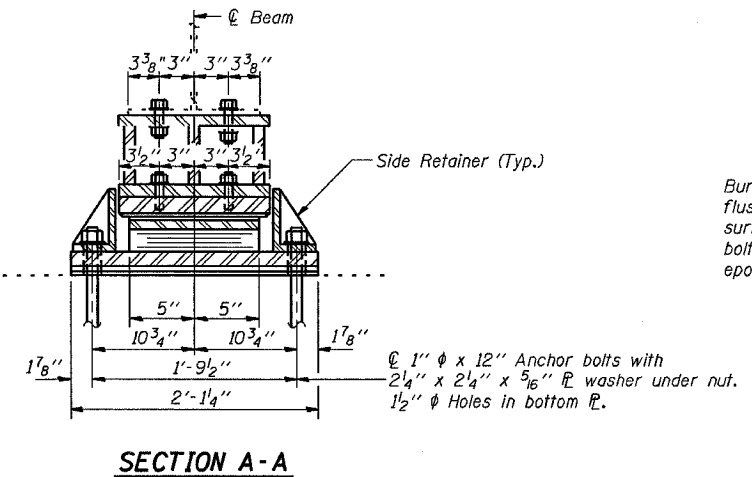
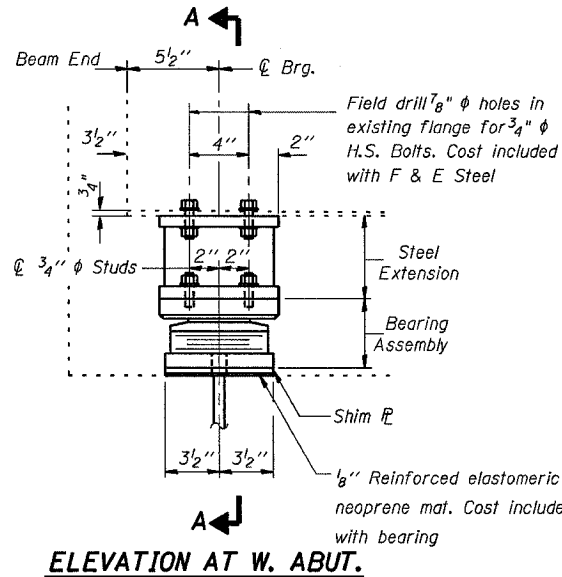
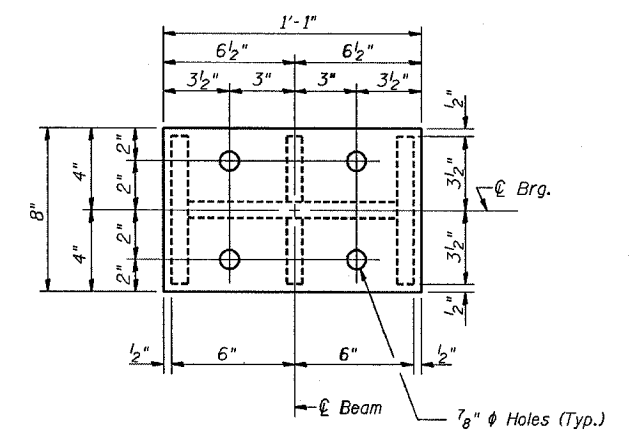


STATE OF ILLINOIS  
DEPARTMENT OF TRANSPORTATION

PROJECT NO.	SECTION	COUNTY	SHEET NO.	TOTAL SHEETS
F.A.I. 24	*	JOHNSON	150	148
FED. ROAD DIST. NO. 7		ILLINOIS	FED. AID PROJECT	
* BSMART FY 04-3 98836				



**EXISTING BEARING REMOVAL DETAILS**  
Cost is included with Jack and Remove Existing Bearings



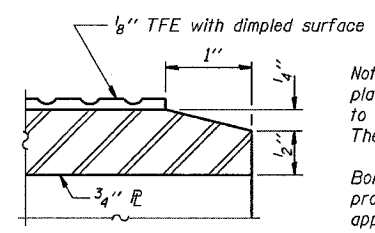
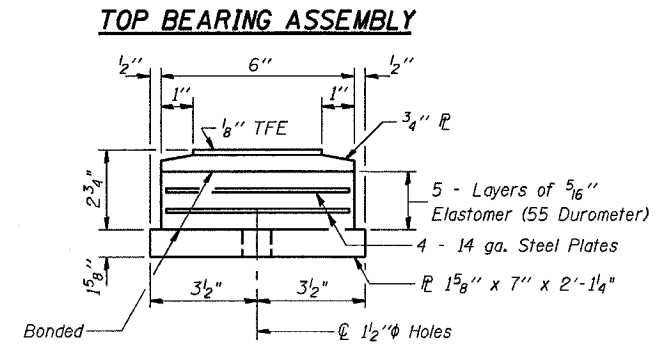
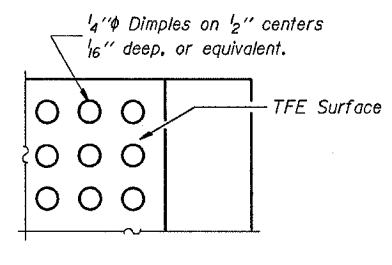
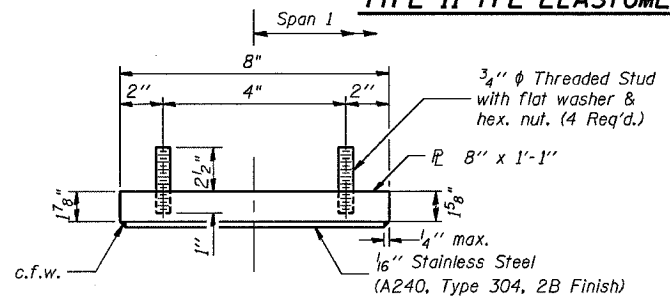
Notes: Diaphragm removal and replacement may be required to facilitate drilling holes. Cost shall be included in the cost of Furnishing and Erecting Structural Steel.

New steel extensions, side retainers, shim P's, connection bolts and anchor bolts are included in Furnishing and Erecting Structural Steel.

See Sheet 150 for Anchor Bolt installation.

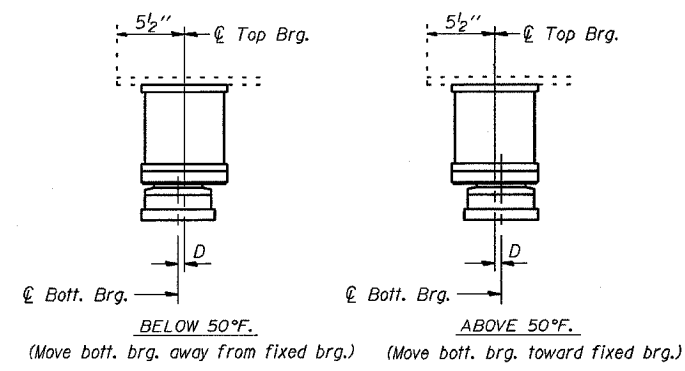
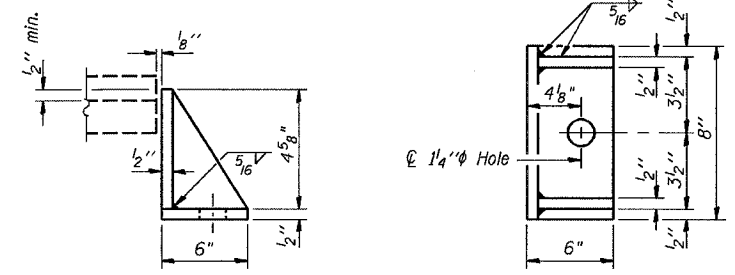
Prior to ordering any material, the Contractor shall verify in the field all bearing height and shim thickness dimensions. The minimum jack capacity required is 30 Tons.

**TYPE II TFE ELASTOMERIC EXP. BRG.**

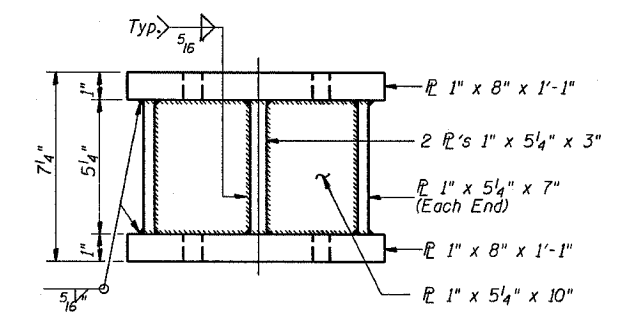


**GIRDER REACTIONS**

R <sub>p</sub>	(K)	12.6
R <sub>t</sub>	(K)	33.2
Imp.	(K)	10.0
R (Total)	(K)	55.8



**STEEL EXTENSION AT WEST ABUT.**



**BILL OF MATERIAL**

Item	Unit	Total
Elastomeric Bearing Assembly Type II	Each	6
Jack and Remove Existing Bearings	Each	6

**WEST ABUTMENT  
TYPE II ELASTOMERIC BEARING  
JOHNSON COUNTY  
S.N. 044-0049 (E.B.)**

DESIGNED:	MAS
CHECKED:	MAS
DRAWN:	JMB
CHECKED:	MAS