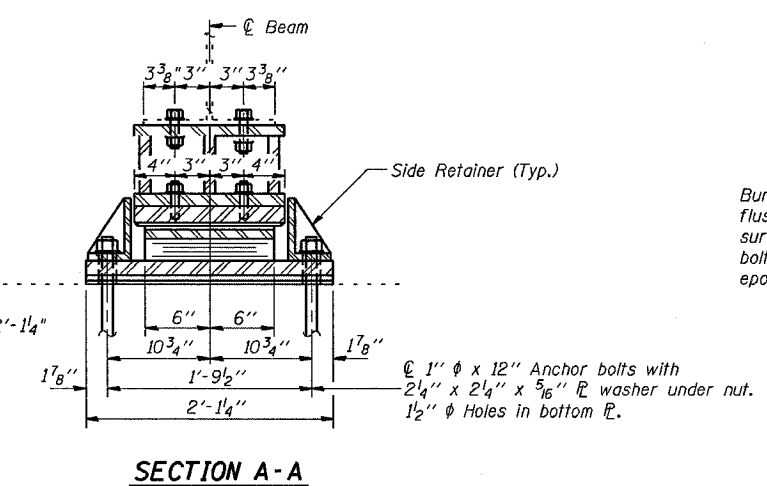
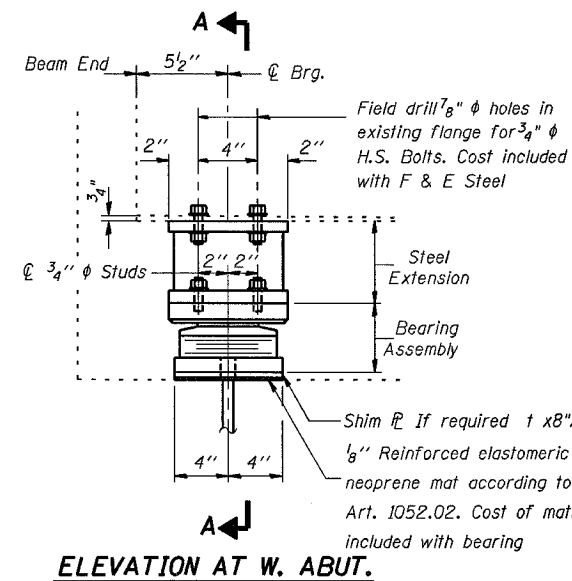


STATE OF ILLINOIS
DEPARTMENT OF TRANSPORTATION

NOTE NO.	SECTION	COUNTY	TOTAL SHEETS	SHEET
F.A.I. 24	*	JOHNSON	150	148a
FEDERAL DIST. NO. 7	ILLINOIS	FED. AID PROJECT-		
* BSMA RT FY 04-3 98836				

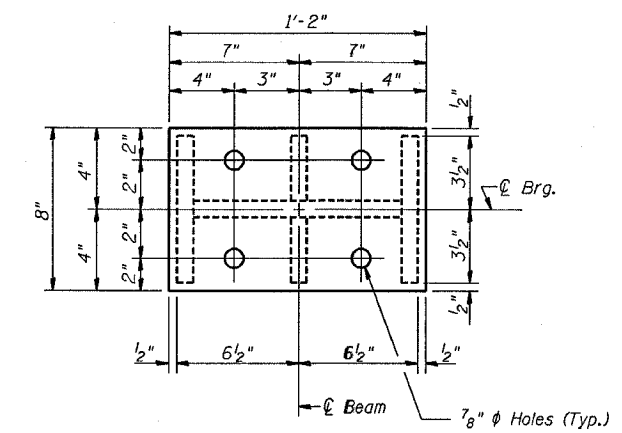


Existing Plate to be removed using the air-arc method and grind smooth all weld material remaining on the bottom flange.

Burn the existing anchor bolts flush with existing concrete surface. Grind existing anchor bolts smooth and seal with epoxy.

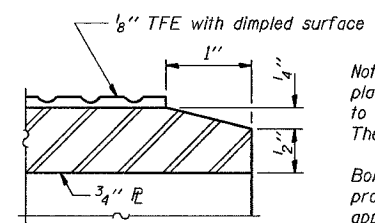
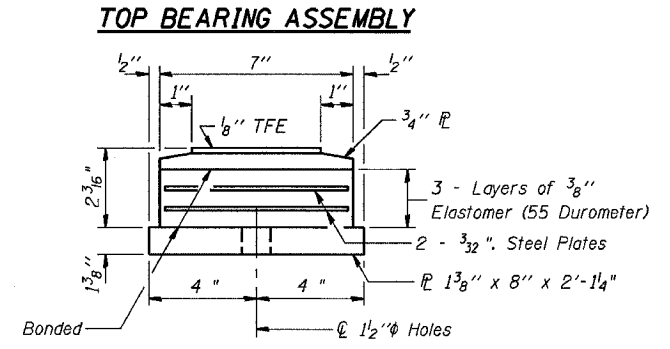
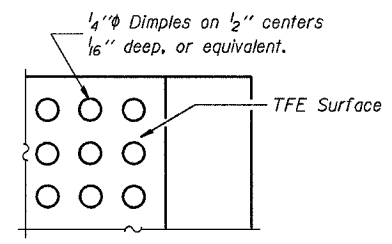
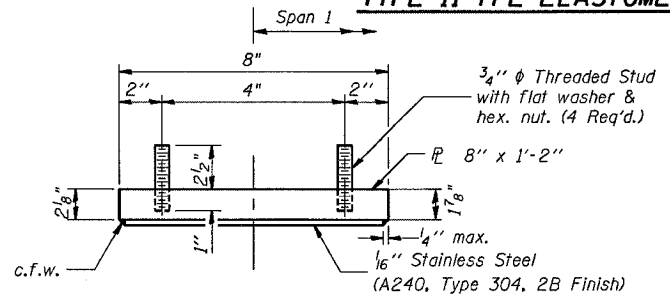
EXISTING BEARING REMOVAL DETAILS
Cost is included with Jack and Remove Existing Bearings

Notes: Prior to ordering any material, the Contractor shall verify in the field all bearing height and shim thickness dimensions. The minimum jack capacity required is 30 Tons. New steel extensions, side retainers, connection bolts, anchor bolts, and shim plates are included in "Furnishing and Erecting Structural Steel". Hatched areas indicate Jack and Remove Existing Bearings. Existing diaphragm removal may be required to provide clearance for the drill during drilling holes in the bottom flange for new bearing attachment. Cost shall be included in the cost of "Furnishing and Erecting Structural Steel".



TYPE II TFE ELASTOMERIC EXP. BRG.

Notes: See sheet 150 for Anchor Bolt installation.



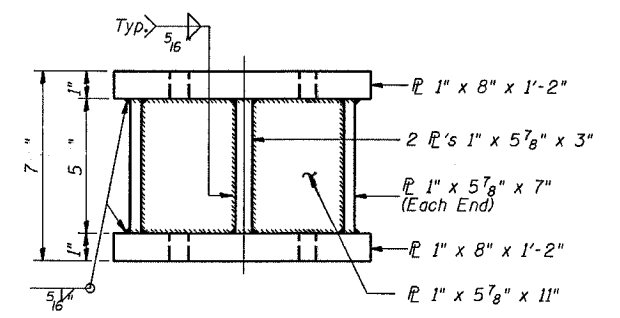
Note: The 1/8" TFE sheet shall be bonded directly to the top steel plate with a two-component, medium viscosity epoxy resin, conforming to the requirements of the Federal Specification MMM-A-134, Type I. The bond agent shall be applied on the full area of the contact surfaces.

Bonding of 1/8" TFE sheet during vulcanizing process will be permitted provided the process and method of adjusting assembly height is approved by the Engineer.

GIRDER REACTIONS

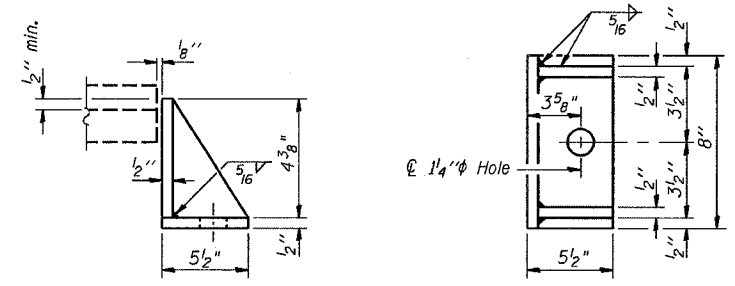
R ₁	(K)	15.4
R ₂	(K)	34.7
Imp.	(K)	10.4
R (Total)	(K)	60.5

STEEL EXTENSION AT WEST ABUT.

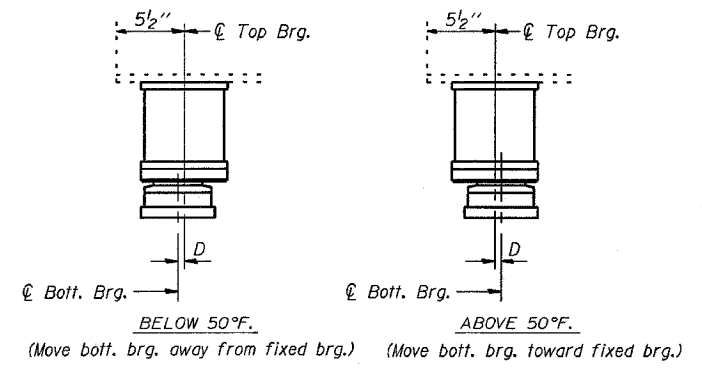


BILL OF MATERIAL

Item	Unit	Total
Elastomeric Bearing Assembly Type II	Each	6
Jack and Remove Existing Bearings	Each	6



Equivalent rolled angle with stiffeners will be allowed in lieu of welded plates.



D = 1/8" per each 100' of expansion for every 15° temp. change from the normal temp. of 50°F.

**WEST ABUTMENT
TYPE II ELASTOMERIC BEARING
JOHNSON COUNTY
S.N. 044-0050 (W.B.)**

DESIGNED:	MAS
CHECKED:	MAS
DRAWN:	JMB
CHECKED:	MAS