

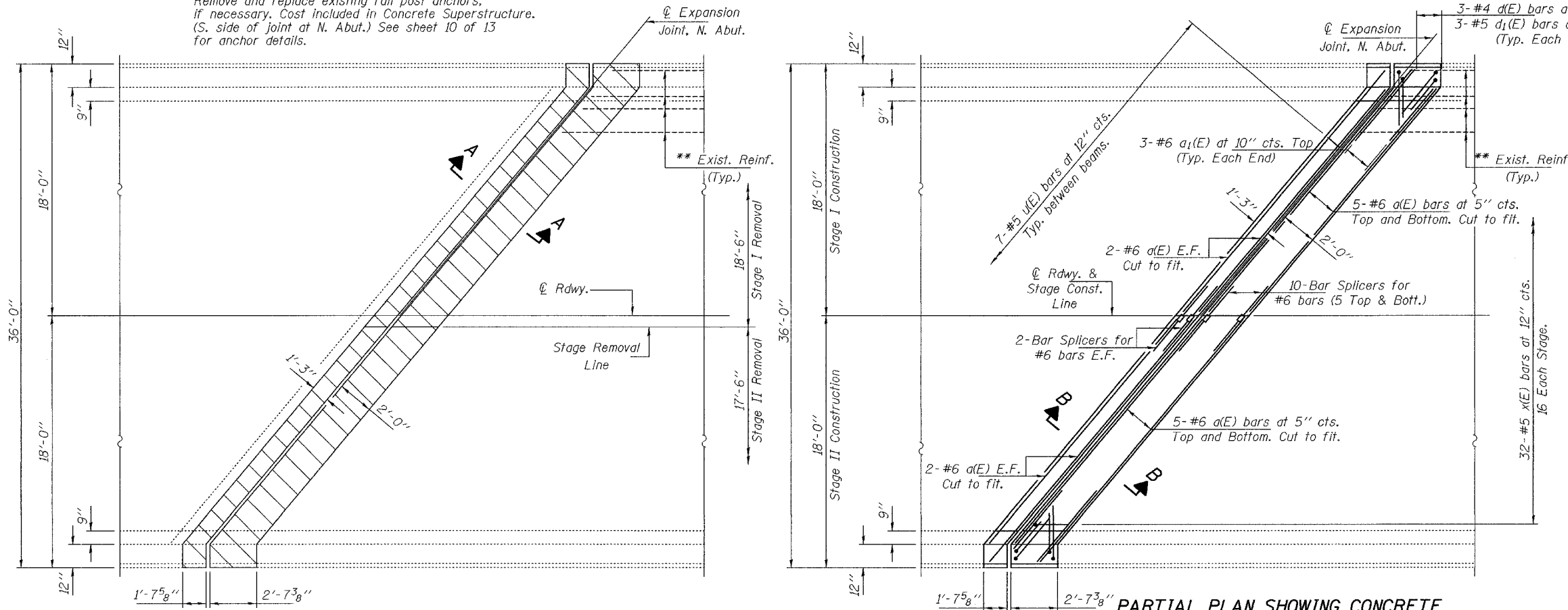
98846

STATE OF ILLINOIS  
DEPARTMENT OF TRANSPORTATION

ROUTE NO.	SECTION	COUNTY	TOTAL SHEETS	SHEET
F.A.I. 57	(02-1B)I	ALEXANDER	13	17
FED. ROAD DIST. NO. 7	ILLINOIS	FED. AID PROJECT-		

SHEET NO. 9  
13 SHEETS

Remove, store and re-install existing rail post.  
Remove and replace existing rail post anchors,  
if necessary. Cost included in Concrete Superstructure.  
(S. side of joint at N. Abut.) See sheet 10 of 13  
for anchor details.



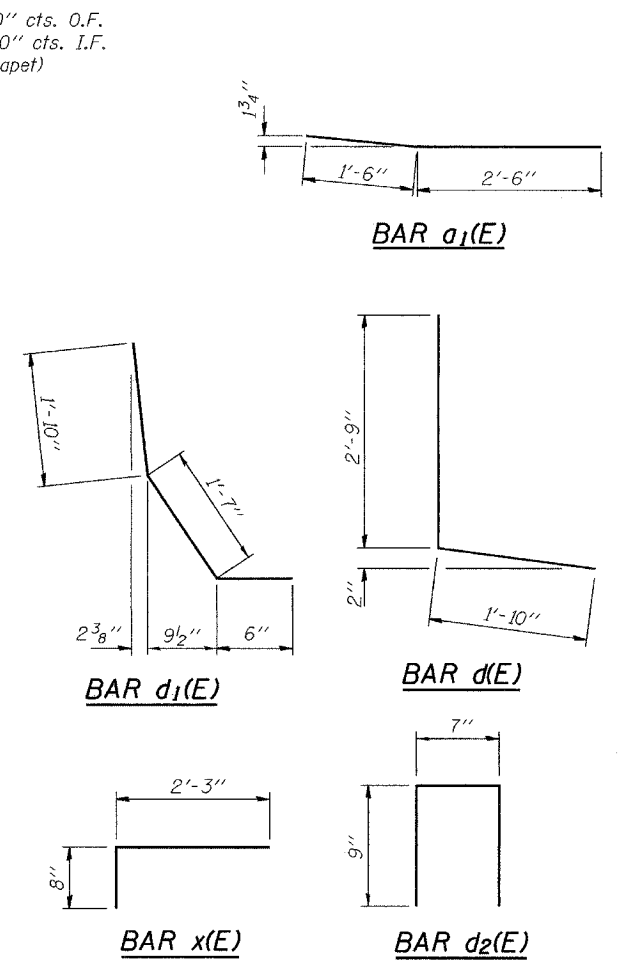
**PARTIAL PLAN SHOWING CONCRETE  
REMOVAL AT NORTH ABUTMENT**

**PARTIAL PLAN SHOWING CONCRETE  
REPLACEMENT AT NORTH ABUTMENT**

Hatched areas indicate concrete sections to be removed and replaced. Perimeters of concrete removal areas shall be saw cut 3/4" prior to the removal of concrete.  
Remove any portion of the existing finger joint, stools and bituminous overlay that are in the removal area.

\*\* Existing longitudinal reinforcement extending into the removal area shall be cleaned, straightened and incorporated into the new construction. Any reinforcement bars that are damaged during concrete removal shall be replaced with an approved bar splicer or anchorage system. Cost shall be included with Concrete Removal.

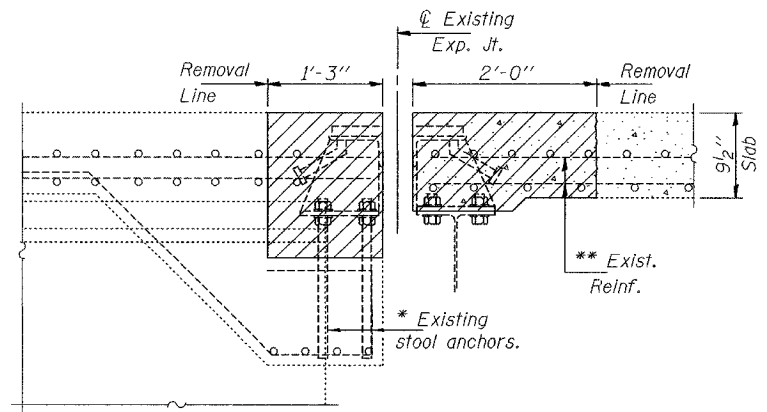
\* Existing stool anchors extending into the removal area shall be cleaned, straightened and incorporated into the new construction. Cost shall be included with Concrete Removal.



Notes:  
For Section Thru Parapet see sheet 10 of 13.  
Reinforcement bars designated (E) shall be epoxy coated.

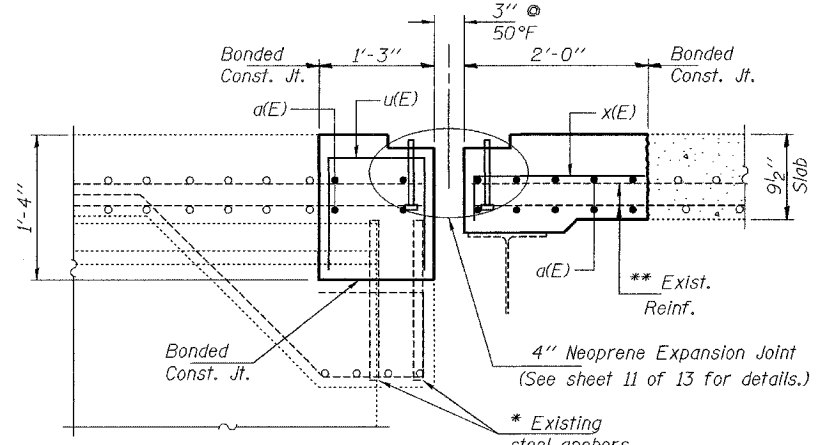
**BILL OF MATERIAL**

Bar	No.	Size	Length	Shape
a(E)	56	#6	22'-0"	—
a1(E)	12	#6	4'-0"	—
d(E)	12	#5	4'-7"	L
d1(E)	12	#5	3'-7"	L
d2(E)	8	#4	2'-1"	□
u(E)	56	#5	2'-7"	□
x(E)	64	#5	2'-11"	□
Concrete Removal			Cu. Yd.	12.9
Concrete Superstructure			Cu. Yd.	12.9
Reinforcement Bars, Epoxy Coated			Lbs.	2380
Neoprene Expansion Joint 4"			Foot	93



**SECTION A-A**

All dimensions are at rt Ls.



**SECTION B-B**

All dimensions are at rt Ls.

DESIGNED	JSB
CHECKED	ATH
DRAWN	balliva
CHECKED	JSB ATH

MARCH 8, 2004  
EXAMINED **John A. Morris**  
ENGINEER OF STRUCTURAL SERVICES  
PASSED

**CONCRETE REMOVAL & REPLACEMENT  
NORTH ABUTMENT  
I-57 OVER CACHE RIVER  
F.A.I. RTE. 57 - SEC. (02-1B)I  
ALEXANDER COUNTY  
STATION 943+72.00  
SN 002-0003 (NB) & 002-0004 (SB)**