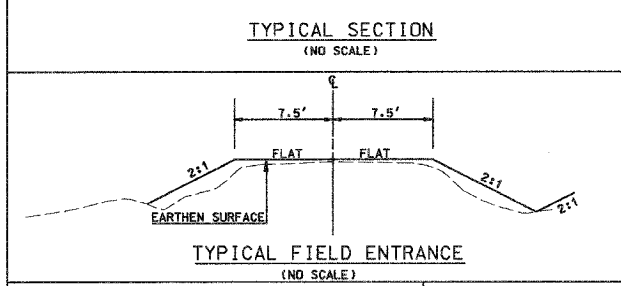
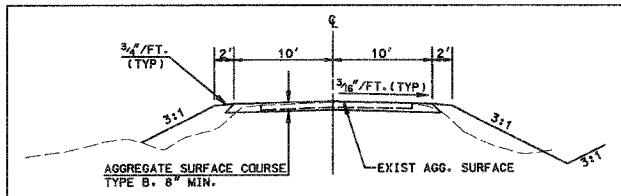


ROUTE	SECTION	COUNTY	TOTAL SHEET NO.	SHEET NO.
T.R. 200	01-16117-00-BR	JACKSON	15	2

FED PROJ. BROS-077(35)



NOTE: THE EXISTING STRUCTURE HAS BEEN DISMANTLED. WOODEN ABUTMENTS AND PIECES OF CONCRETE DECK REMAIN. REMOVAL SHALL BE INCIDENTAL TO CHANNEL EXCAVATION

CURVE #1 DATA

Δ = 25° 54' 13"	T = 87.0'
D = 15° 08' 44"	R = 378.3'
E = 9.92'	L = 171.03'
PC = 0+93.5	PT = 2+64.5

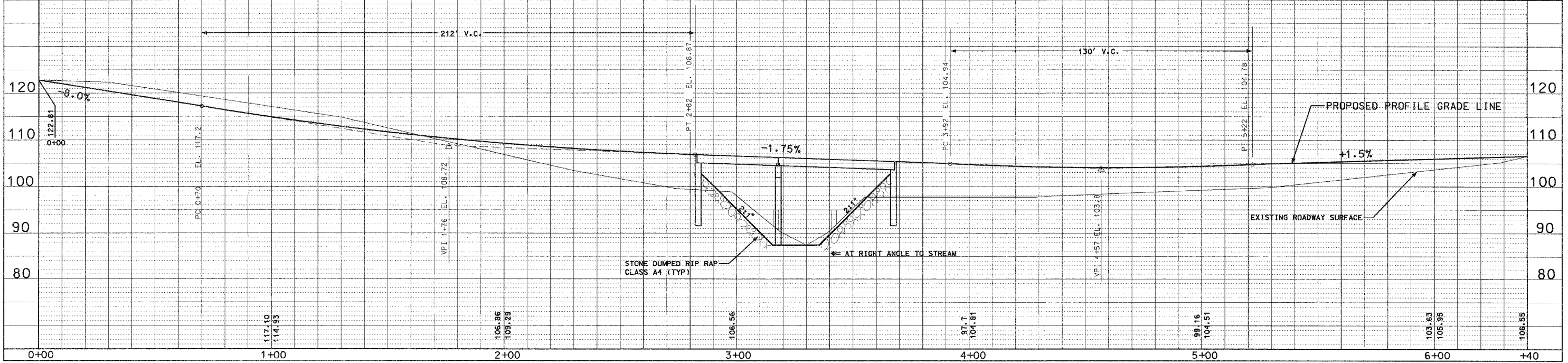
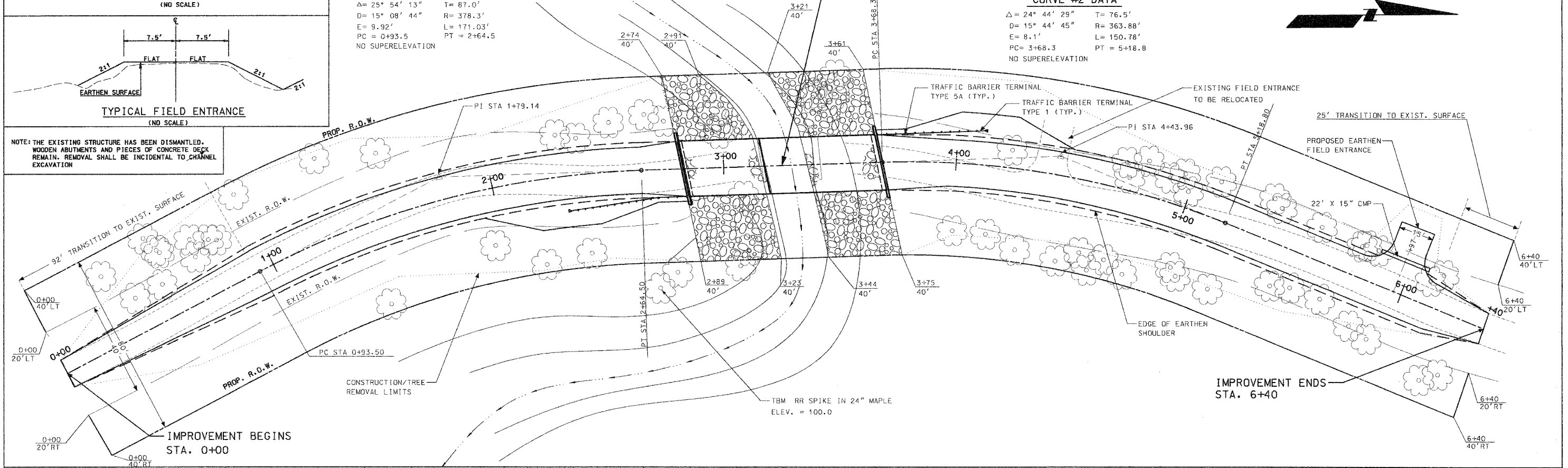
NO SUPERELEVATION

CURVE #2 DATA

Δ = 24° 44' 29"	T = 76.5'
D = 15° 44' 45"	R = 363.88'
E = 8.1'	L = 150.78'
PC = 3+68.3	PT = 5+18.8

NO SUPERELEVATION

SCALE: 1" = 20'



WISELY ROAD BRIDGE OVER RATTLESNAKE CREEK SECTION 01-16117-00-BR