

68065

F.A.I. RTE.	SECTION	COUNTY	TOTAL SHEETS	SHEET NO.
74	.	KNOX	40	1
FED. ROAD DIST. NO.		ILLINOIS	FED. AID PROJECT	
D-94-051-00		* 48-28RS-4,48-29RS-6		

STATE OF ILLINOIS
DEPARTMENT OF TRANSPORTATION

DIVISION OF HIGHWAYS
**PLANS FOR PROPOSED
FEDERAL AID HIGHWAY**

F.A.I. ROUTE 74 (I-74) (EB)
SECTION 48-28RS-4,48-29RS-6
PROJECT NO. ACIM-074-2 (123)052
KNOX COUNTY
3R - MILL & OVERLAY
C-94-062-00

INDEX OF SHEETS

- 1 COVER SHEET
- 2-3 GENERAL NOTES, PLAN NOTES, & COMMITMENTS
- 4-5 SUMMARY OF QUANTITIES
- 6 TYPICAL SECTIONS
- 7 MAINTENANCE CROSSOVERS
- 8-13 SCHEDULES OF QUANTITIES
- 14-24 PLAN SHEETS
- 25 FRENCH DRAIN DETAIL
- 26 PIPE CULVERT EXTENSION COLLAR (W/O END SECTION) DETAIL
- 27 STONE DUMPED RIP-RAP FOR EROSION CONTROL
- 28-29 BUTT JOINTS
- 30 BITUMINOUS SURFACE REMOVAL (COLD MILLING)
- 31 CONCRETE DITCH CHECK
- 32 CONCRETE THRUST BLOCKS
- 33 DETAIL OF PIPE HANDRAIL FASTENING
- 34-35 GUARDRAIL EROSION CONTROL TREATMENTS
- 36-38 GUARDRAIL AND BARRIER WALL DELINEATION
- 39-40 TYPICAL PAVEMENT MARKINGS

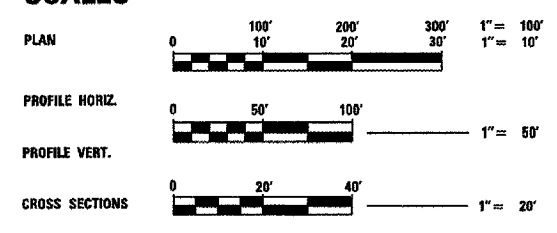
LIST OF HIGHWAY STANDARDS

285001-01	635011-01	701406-04
442001-02	642001	701411-02
482011-01	665001-01	701426-01
542111	701101	702001-04
635006-02	701106	780001-01
	701401-02	781001-02
		701400-01

DESIGN DESIGNATION

ADT = 12,700 (01)
MU = 27.6%
SU = 3.9%

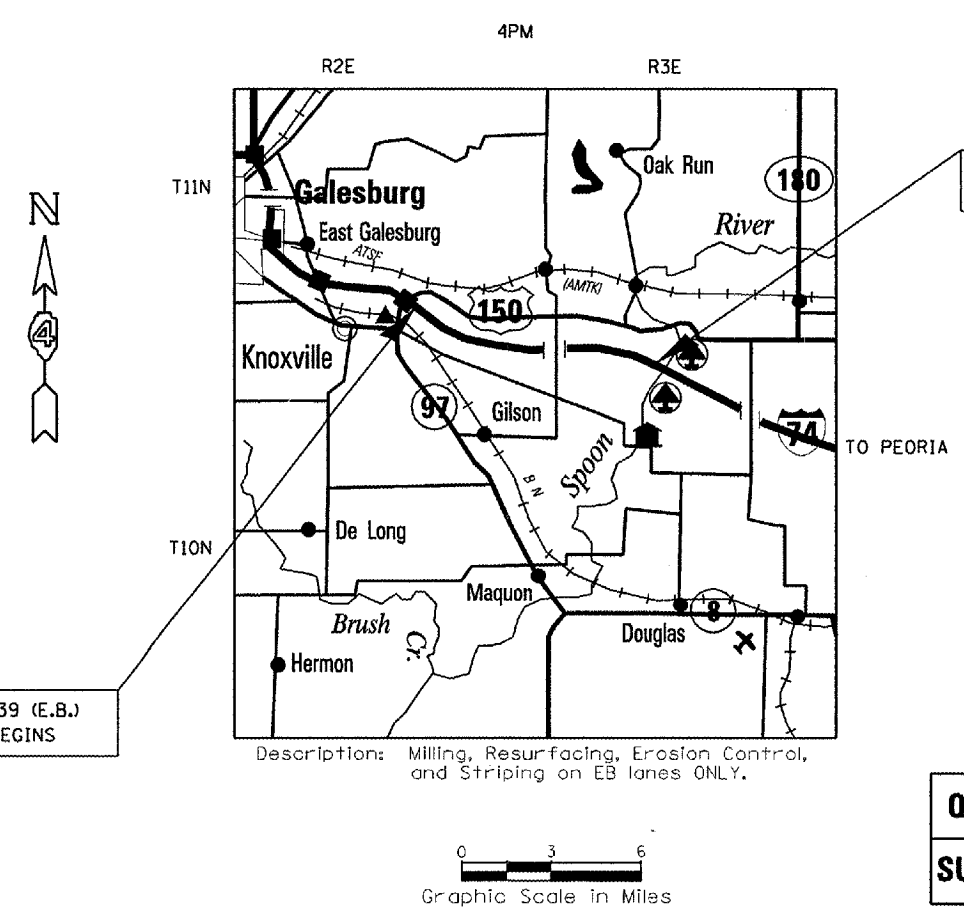
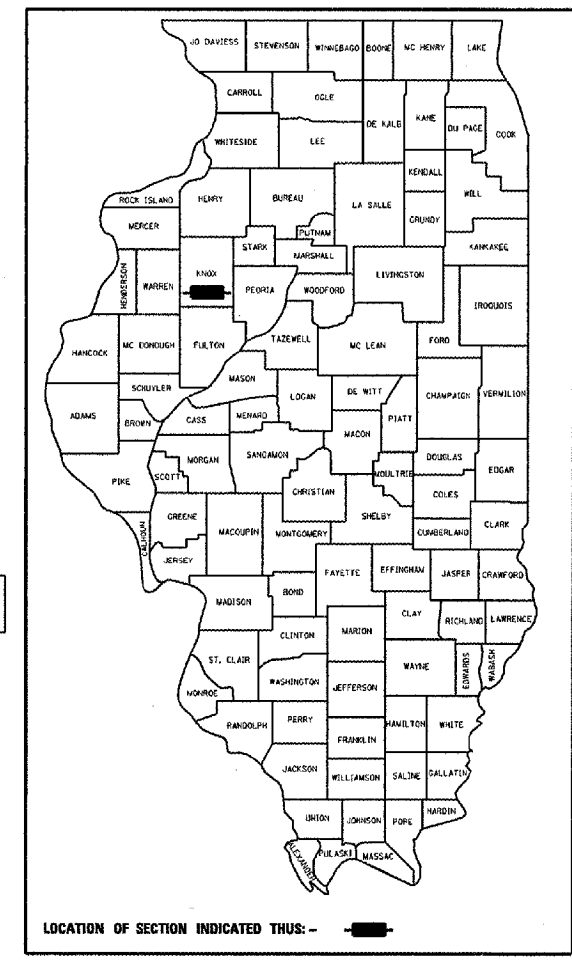
SCALES



FULL SIZE PLANS HAVE BEEN PREPARED USING STANDARD ENGINEERING SCALES, REDUCED SIZED PLANS WILL NOT CONFORM TO STANDARD SCALES, IN MAKING MEASUREMENTS ON REDUCED PLANS, THE ABOVE SCALES MAY BE USED.

J.U.L.I.E.
JOINT UTILITY LOCATION INFORMATION FOR EXCAVATION
1-800-892-0123

TOTAL SHEETS = 40



STA. 650+39 (E.B.)
PROJECT BEGINS

STA. 1066+17 (E.B.)
PROJECT ENDS

Description: Milling, Resurfacing, Erosion Control, and Striping on EB lanes ONLY.

**QC/QA BITUMINOUS
SUPERPAVE PROJECT**

STATE OF ILLINOIS
DEPARTMENT OF TRANSPORTATION
DIVISION OF HIGHWAYS

SUBMITTED FEB 11, 20 04
Janice Cline
DISTRICT ENGINEER

MARCH 19, 20 04
Mike Hurek
ENGINEER OF DESIGN AND ENVIRONMENT

MARCH 19, 20 04
Victor Mader
DIRECTOR, DIVISION OF HIGHWAYS

**PRINTED BY THE AUTHORITY
OF THE STATE OF ILLINOIS**

GROSS LENGTH OF IMPROVEMENT = 41,578 FEET = 7.87 MILES
NET LENGTH OF IMPROVEMENT = 41,578 FEET = 7.87 MILES

△ Rev 4-19-04

PROJECT ENGINEER: MAUREEN ADDIS (309)671-3454

DESIGN BY: PATTIE CONOVER (309)671-3475