



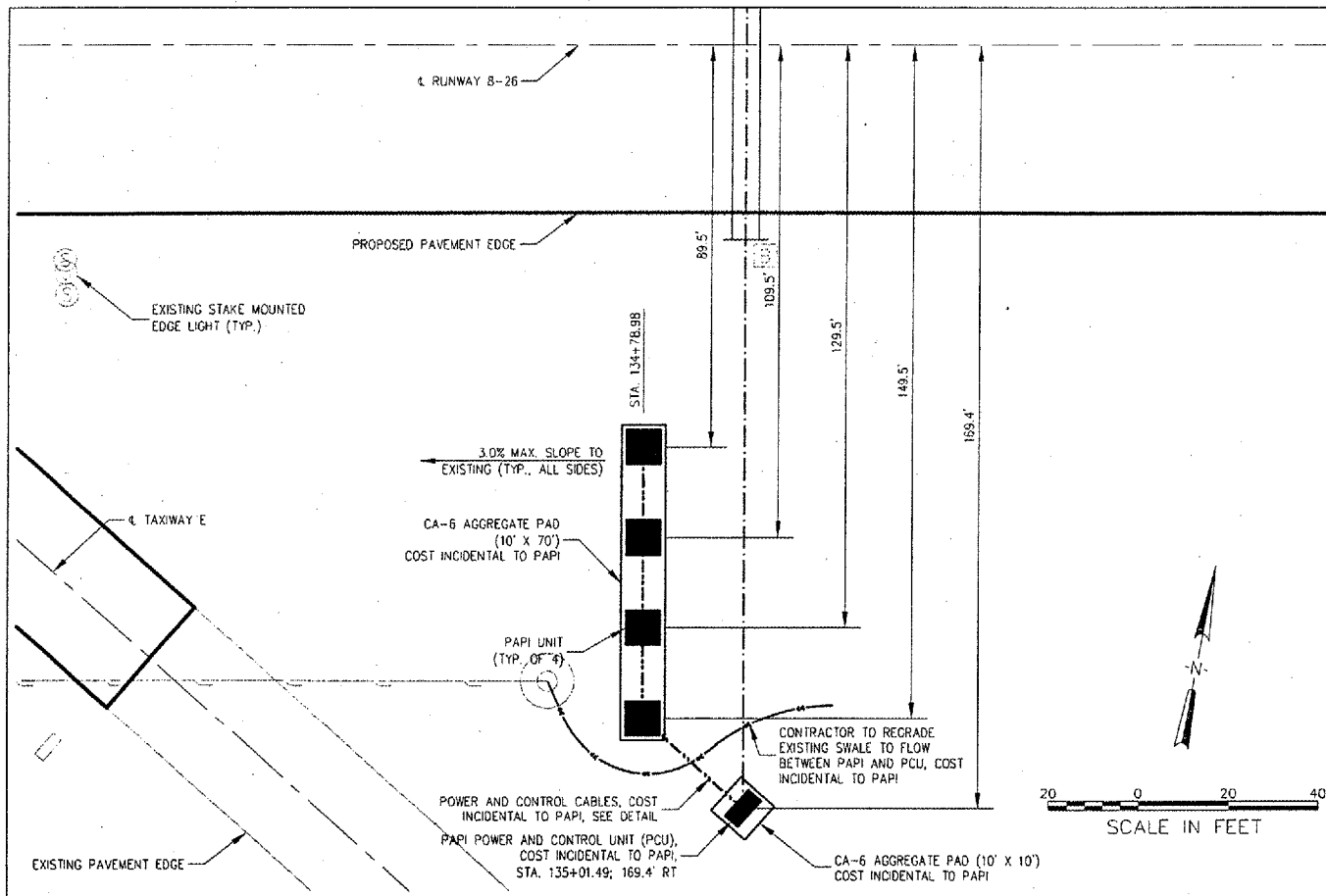
HANSON PROFESSIONAL SERVICES INC.
 815 Commerce Drive Suite 200
 Oak Brook, Illinois 60523
 Telephone: 630.990.3800
 Fax: 630.990.3801



CITY OF DIXON, ILLINOIS
 Post Office Box 386
 Dixon, Illinois 61021
 Telephone: 815.288.1485

DIXON MUNICIPAL AIRPORT
 CHARLES R. WALGREEN FIELD
 OVERLAY RUNWAY 8-26,
 REHABILITATE HANGAR PAVEMENTS

AIP PROJECT NO. 3-17-0036-B5
 IDA PROJECT NO. C73-3313



RUNWAY 26 PAPI SITE PLAN

NOTES:

- AGGREGATE PADS TO BE SET 0.10' ABOVE EXISTING GRADE AND SURROUNDING GRADE SLOPED AT 3.0% MAX. TO MEET THE AGGREGATE ELEVATION.
- GRADING, TOPSOILING, SEEDING AND MULCHING OF PAPI SITE ARE INCIDENTAL TO PAPI.

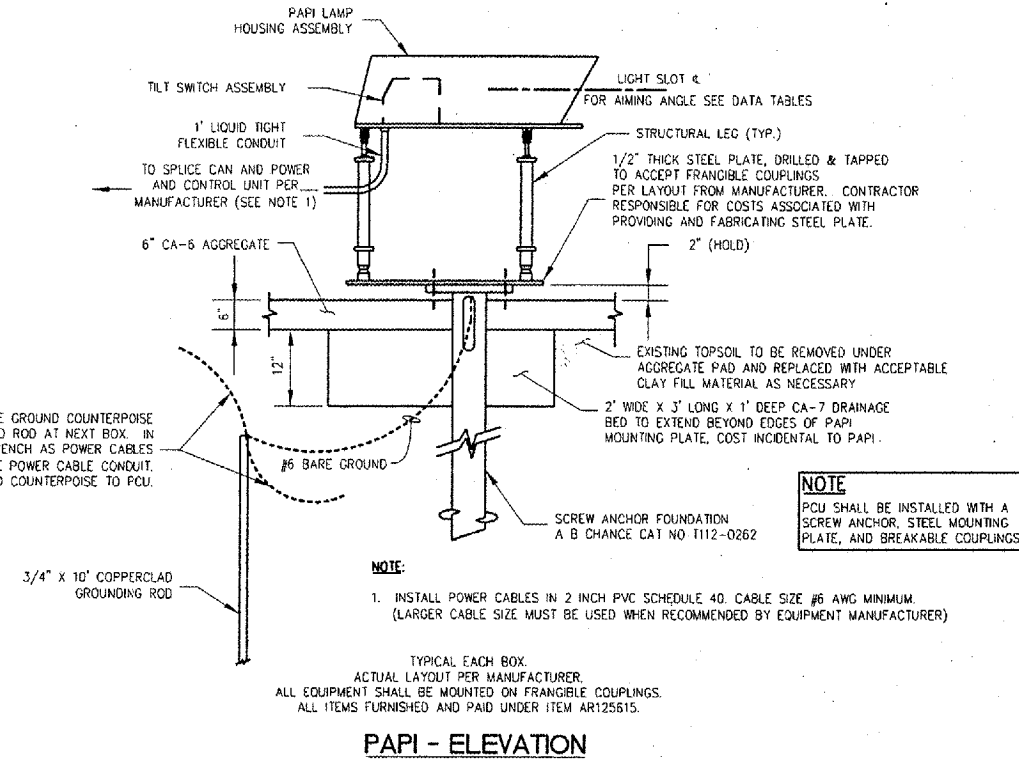
RUNWAY 26 PAPI DATA TABLE				
	PAPI UNIT #1	PAPI UNIT #2	PAPI UNIT #3	PAPI UNIT #4
DISTANCE FROM RUNWAY 4 (1)	89.5'	109.5'	129.5'	149.5'
AIMING ANGLE	3' 30"	3' 10"	2' 50"	2' 30"
APPROXIMATE GROUND ELEVATION	780.4	780.0	779.1	777.9
PAPI UNIT APERTURE ELEVATION (2)	783.50	783.50	783.50	783.50

RUNWAY 26 - AS-BUILT ELEVATIONS	
ANCHOR #	AS-BUILT TOP ELEV.
1	
2	
3	
4	
5	
6	
7	
8	
9	
10	
11	
12	

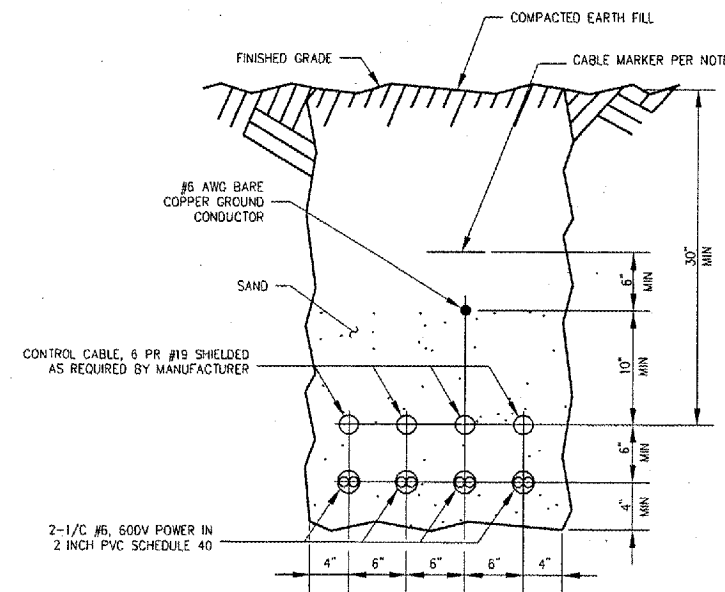
NOTES:

- DIMENSIONS ARE TO THE CENTER OF EACH PAPI UNIT, MIDWAY BETWEEN THE FRONT LEGS.
- APERTURE ELEVATIONS ARE TO THE LIGHT SLOT 4.
- RUNWAY CENTERLINE ELEVATION PERPENDICULAR TO PAPI LOCATION = 782.81.
- THRESHOLD CROSSING HEIGHT 20.0'
- CONTRACTOR TO COMPLETE AS-BUILT ELEVATION TABLES AS PART OF PAPI INSTALLATION.

1:10:0005 [0004] [02:00:00] [04:00:00] [REVISION 1] 10-PAPI DETAILS.DWG, APR 01, 2004, 3:54PM, RMH



PAPI - ELEVATION



NOTES:

- THIS DETAIL IS INTENDED ONLY TO SHOW THE REQUIRED SEPARATION OF THE VARIOUS CABLES WITHIN THE TRENCH. FOR EXACT NUMBER OF CABLES RUNNING TO EACH PAPI UNIT, SEE WIRING DIAGRAM BY MANUFACTURER.
- CABLE MARKER TAPE, PN 0761315 MANUFACTURED BY ALLEN SYSTEMS, OR EQUAL, SHALL BE PLACED IN ALL CABLE TRENCHES AT 6" ABOVE GROUNDING CONDUCTOR

PAPI POWER AND CONTROL CABLES TRENCH DETAIL

DETAILS SHOWN ARE NOT TO SCALE

No.	Drawing Issue Description	Date	By
1	ADDENDUM 01	04/01/04	TMM

Date: 12 MARCH 2004
 Sheet Title: RUNWAY 26 PAPI DETAILS

RUNWAY 26 PAPI DETAILS

Project Number	8430388004/C8005
TMM	03/29/04
Layout By	Date
TMM	03/29/04
Designed By	Date
RMH	03/31/04
Reviewed By	Date
TMM	---
Drawn By	Sheet No.