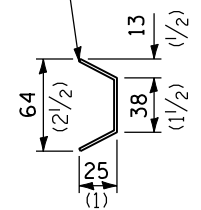
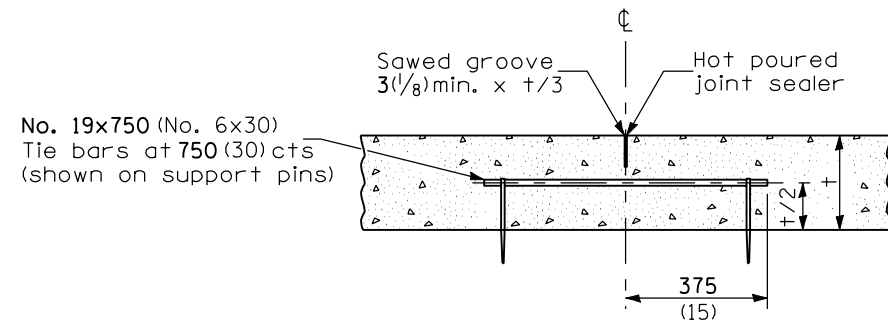


TYPE C METAL JOINT

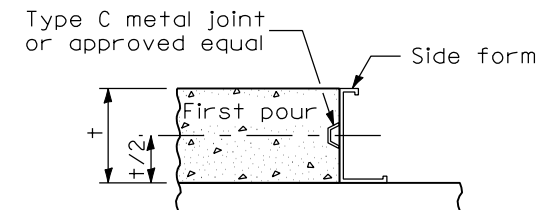
Sheet steel of suitable thickness to form keyway as detailed or approved equal.



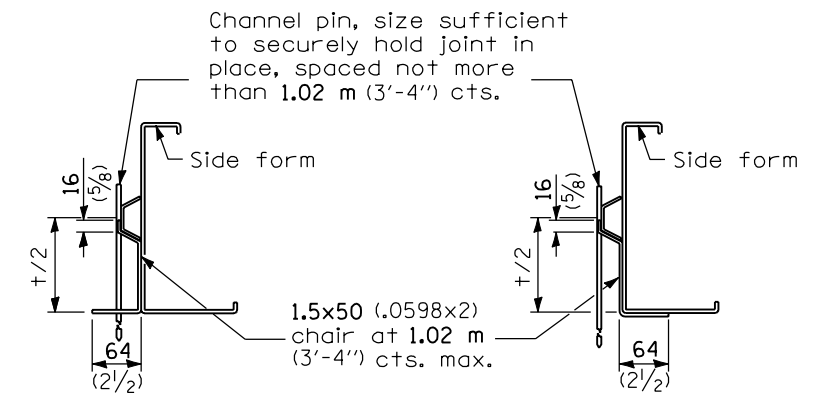
SECTION A-A



LONGITUDINAL SAWED JOINT

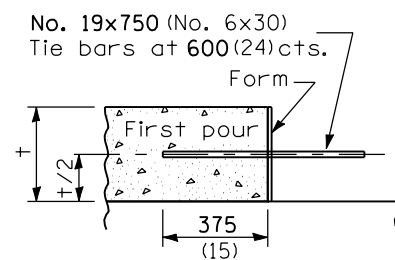


LONGITUDINAL KEYED JOINT

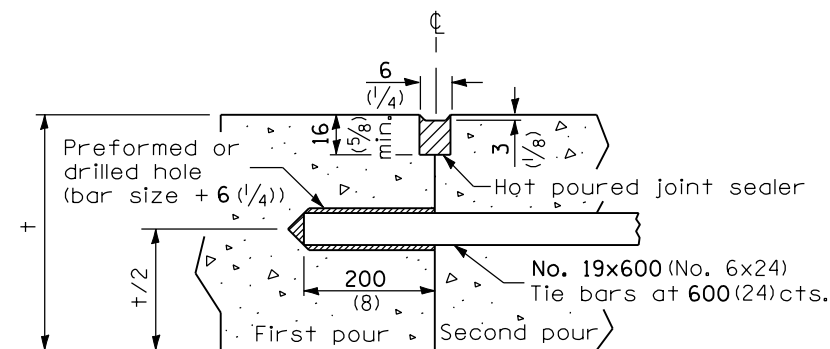


SUPPORTING CHAIR ALTERNATE

SUPPORTING CHAIR ALTERNATE



LONGITUDINAL CONSTRUCTION JOINT
(TIE BAR FORMED IN PLACE)



LONGITUDINAL CONSTRUCTION JOINT
(TIE BAR GROUTED IN PLACE)

GENERAL NOTES

All slope ratios are expressed as units of vertical displacement to units of horizontal displacement (V:H).

All dimensions are in millimeters (inches) unless otherwise shown.

DATE	REVISIONS
1-1-04	Rev. expansion joint and minor corrections to other joints.
1-1-03	Rev. sawed contraction joints to unsealed and reduced width.

PAVEMENT JOINTS

(Sheet 1 of 2)

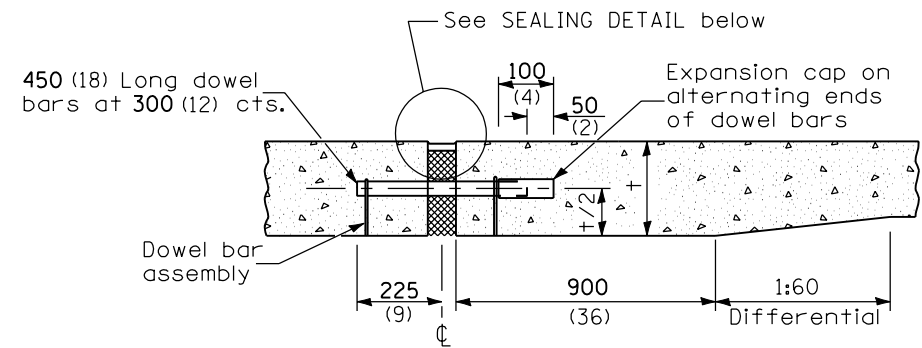
STANDARD 420001-05

Illinois Department of Transportation

PASSED January 1, 2004
Michael Brand
 ENGINEER OF POLICY AND PROCEDURES

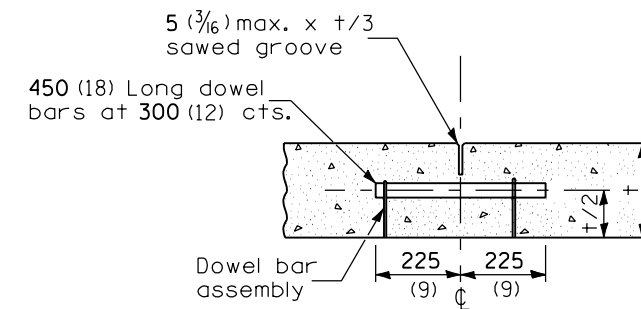
APPROVED January 1, 2004
Michael L. Hine
 ENGINEER OF DESIGN AND ENVIRONMENT

ISSUED 1-1-97

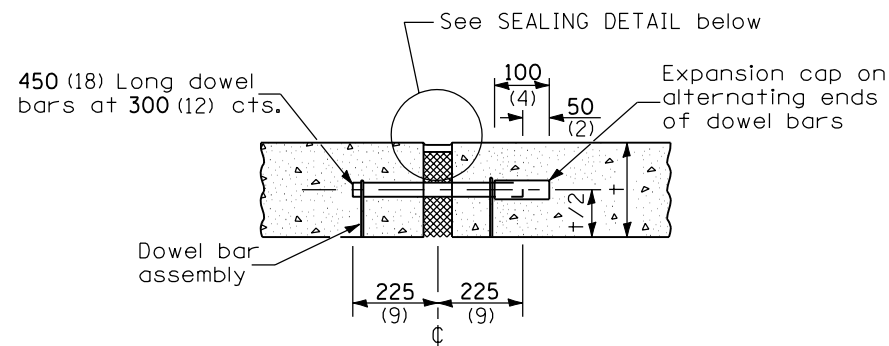


TRANSVERSE EXPANSION JOINT *
(FOR PAVEMENTS WITH UNEQUAL THICKNESS)

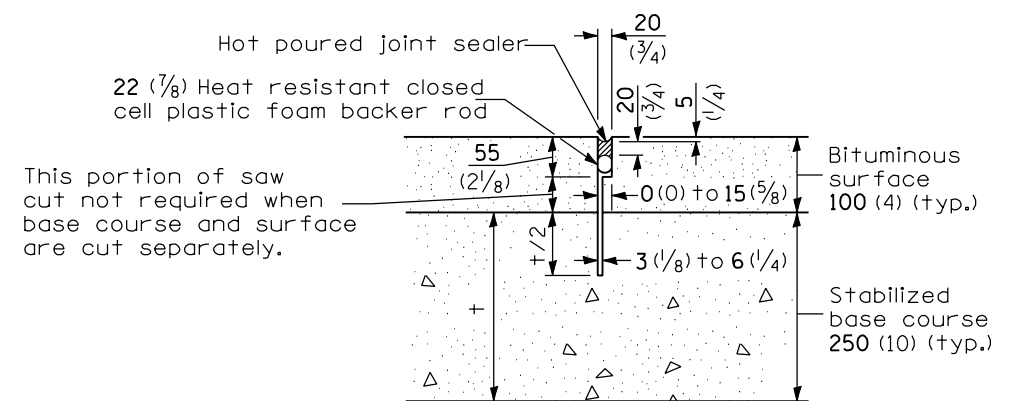
* For expansion joints formed using a construction header, the expansion caps shall be installed on the exposed end of each bar once the header has been removed and the joint filler material has been installed.



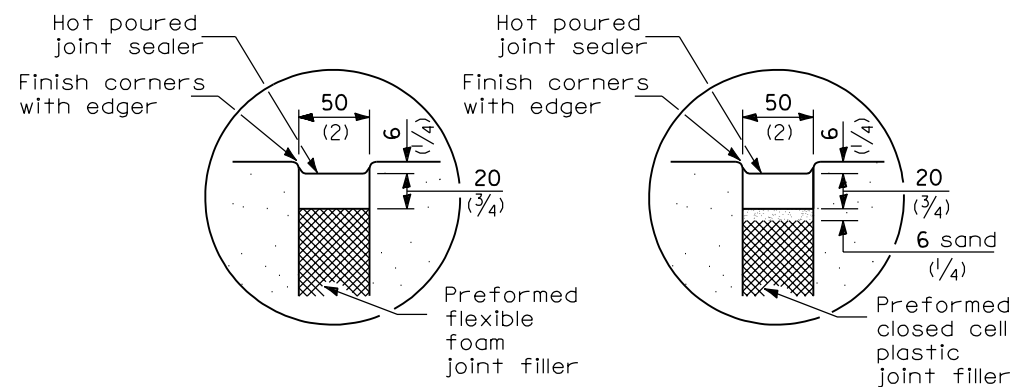
TRANSVERSE CONTRACTION JOINT



TRANSVERSE EXPANSION JOINT *
(FOR PAVEMENTS WITH EQUAL THICKNESS)



TRANSVERSE CONTRACTION JOINT
(FOR CAM, CFA AND LFA BASE COURSE MIXTURES)



SEALING DETAIL

DOWEL BAR TABLE	
PAVEMENT THICKNESS	DOWEL BAR DIAMETER
200 (8) or greater	38 (1 1/2)
175 (7) thru 199 (7.99)	32 (1 1/4)
Less than 175 (7)	25 (1)

Illinois Department of Transportation
 PASSED January 1, 2004
Michael Brand
 ENGINEER OF POLICY AND PROCEDURES
 APPROVED January 1, 2004
Michael L. Hine
 ENGINEER OF DESIGN AND ENVIRONMENT
 ISSUED 1-1-97

PAVEMENT JOINTS
 (Sheet 2 of 2)
STANDARD 420001-05