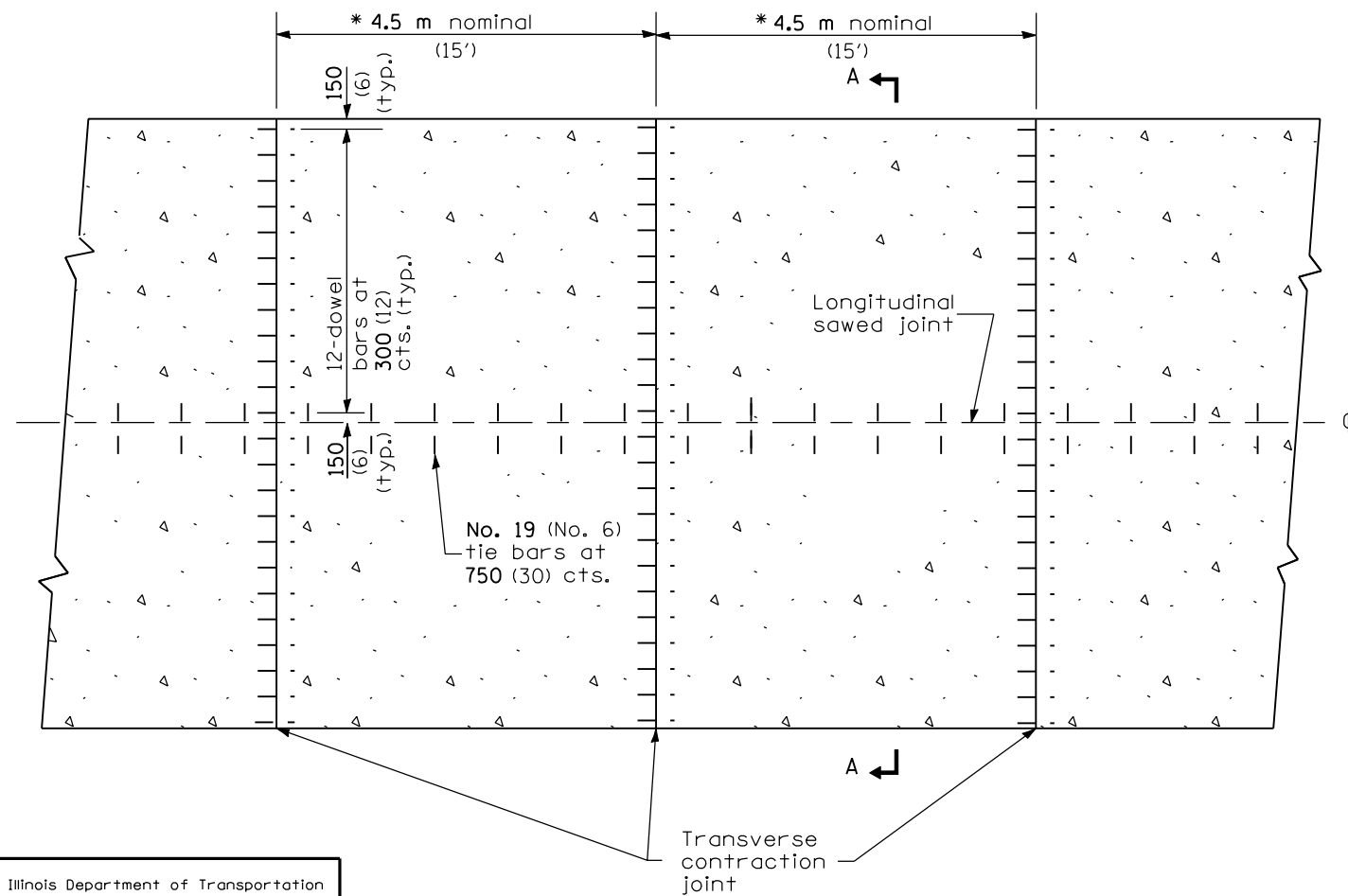


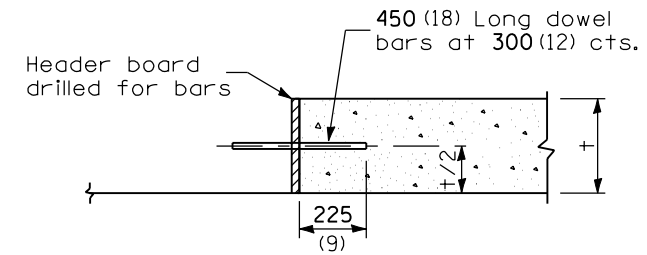
SECTION A-A

(TYPICAL 2-LANE WITH SHOULDERS)

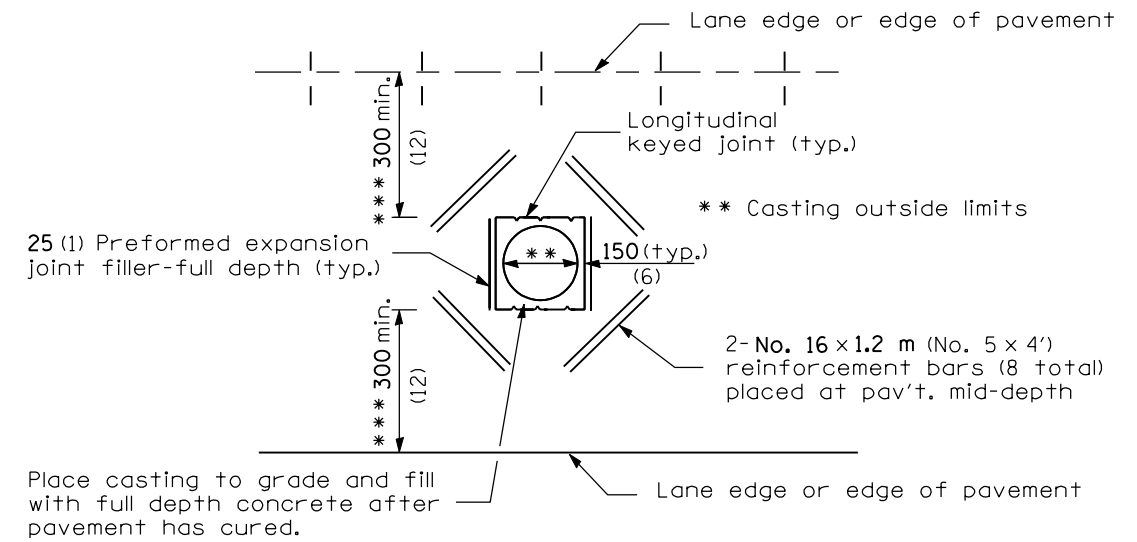
* The 4.5 m (15') dimension should be adjusted to 3.6 m (12') min. to 5.5 m (18') max. when placed adjacent to existing pcc pavement structure so that the joints are in prolongation.



PLAN



TRANSVERSE CONSTRUCTION JOINT



DETAIL OF ADDED REINFORCEMENT FOR PAVEMENT BLOCKS-OUTS

*** When the 300 (12) minimum cannot be achieved, the transverse joints shall be extended to either the longitudinal joint or edge of pavement.

GENERAL NOTES

See Standard 420001 for details of joints as shown.

All dimensions are in millimeters (inches) unless otherwise shown.

DATE	REVISIONS	7.2 m (24') JOINTED PCC PAVEMENT
1-1-04	Minor corrections of joint information.	
1-1-98	Del. Hinge Joints.	
		STANDARD 420101-02

Illinois Department of Transportation
 PASSED January 1, 2004
 Michael Brand
 ENGINEER OF POLICY AND PROCEDURES
 APPROVED January 1, 2004
 Michael L. Hine
 ENGINEER OF DESIGN AND ENVIRONMENT
 ISSUED 1-1-97