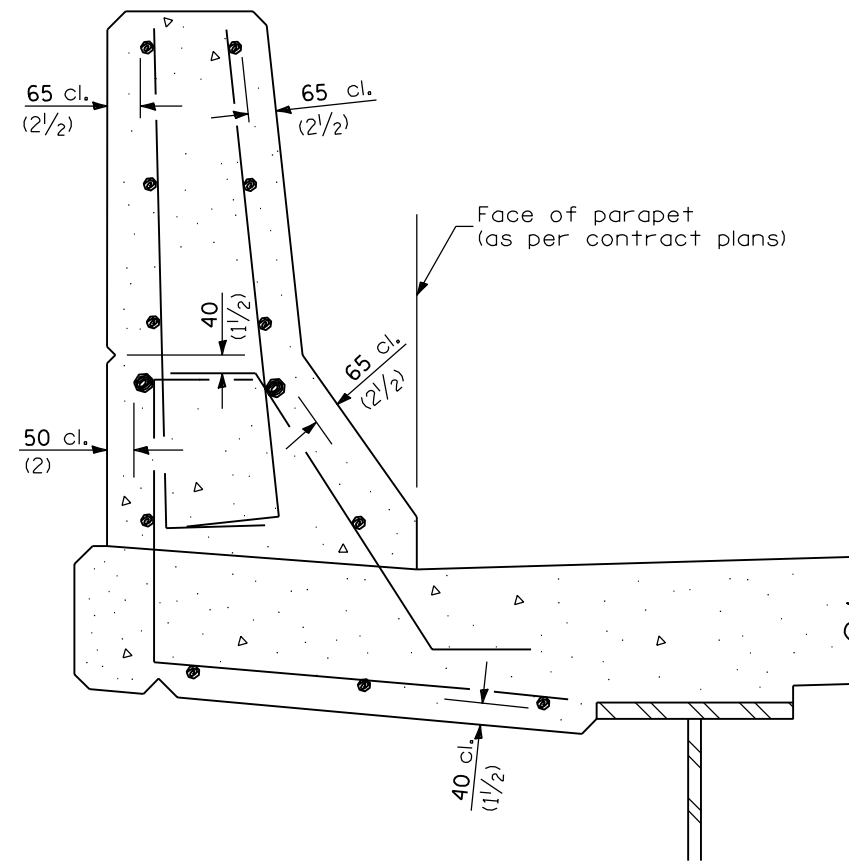
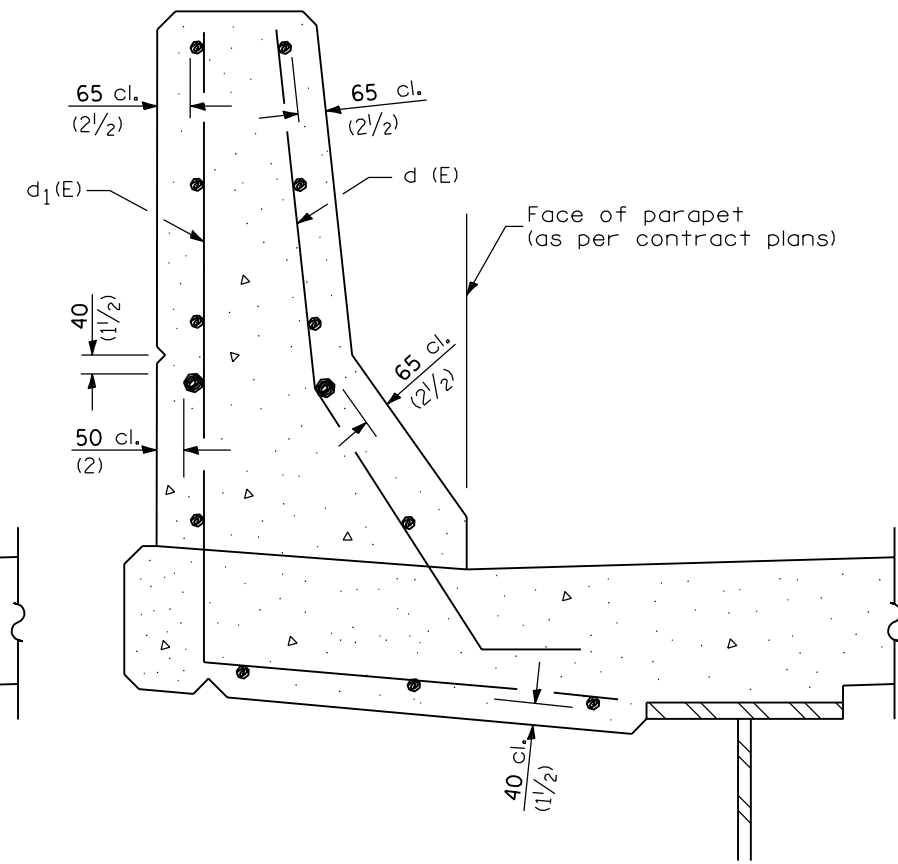


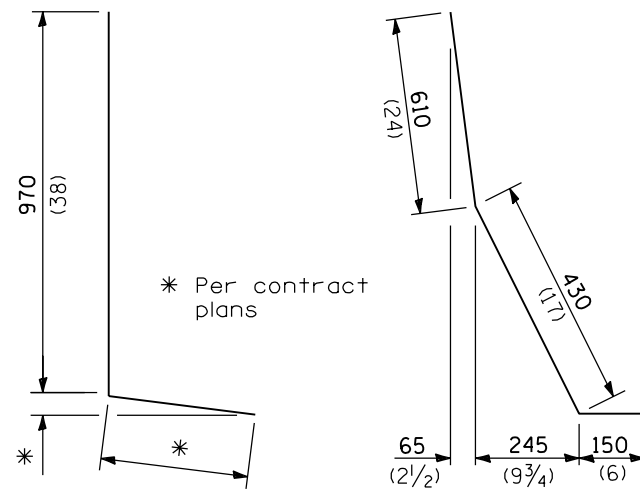
SECTION
(Showing dimensions)



SECTION
(Showing contract reinforcement)



SECTION
(Showing alternate reinforcement)



BAR d₁(E) **BAR d (E)**
(Alternate reinforcement details)

GENERAL NOTES

All bars sizes, spacings, clearances and details are as per contract plans except for clearances in parapet.

All dimensions shall remain the same as shown on contract plans, except dimensions A and B which are to be revised as shown to allow for the 65 mm (2 1/2") bar clearance. Additional concrete needed to revise dimension A and B = 0.0422 m³/m (.0165 cu. yds./ft.) of parapet.

All dimensions are in millimeters (inches) unless otherwise shown.

DATE	REVISIONS
1-1-04	Revised to NCHRP 350 F Shape.
1-1-02	Extend Alum. sheet and remove conc. stippling.

**CONCRETE PARAPET
SLIP-FORMING OPTION**

STANDARD 503001-02

Illinois Department of Transportation

APPROVED January 1, 2004
Ralph E. Anderson
ENGINEER OF BRIDGES AND STRUCTURES

APPROVED January 1, 2004
Michael L. Hine
ENGINEER OF DESIGN AND ENVIRONMENT

ISSUED 1-1-04
26-1-1-04