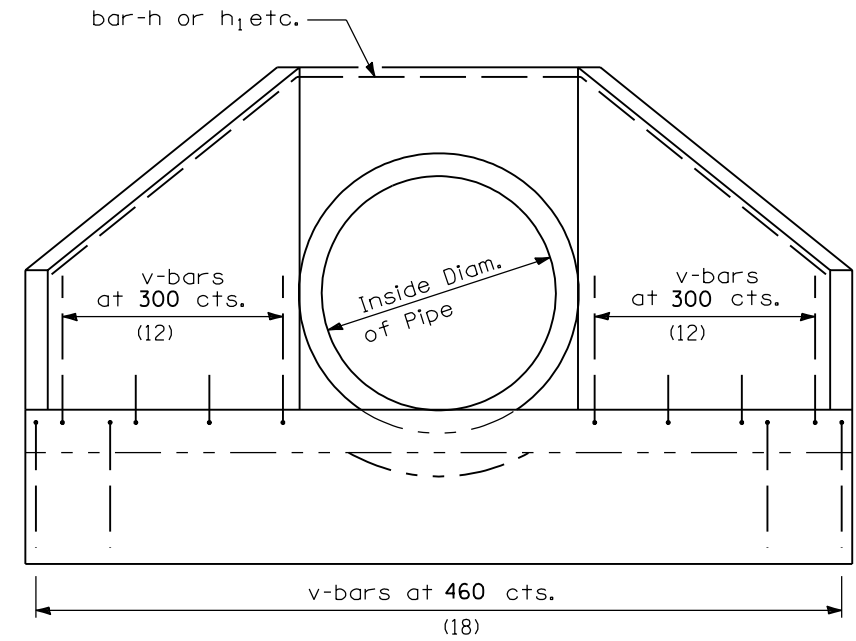


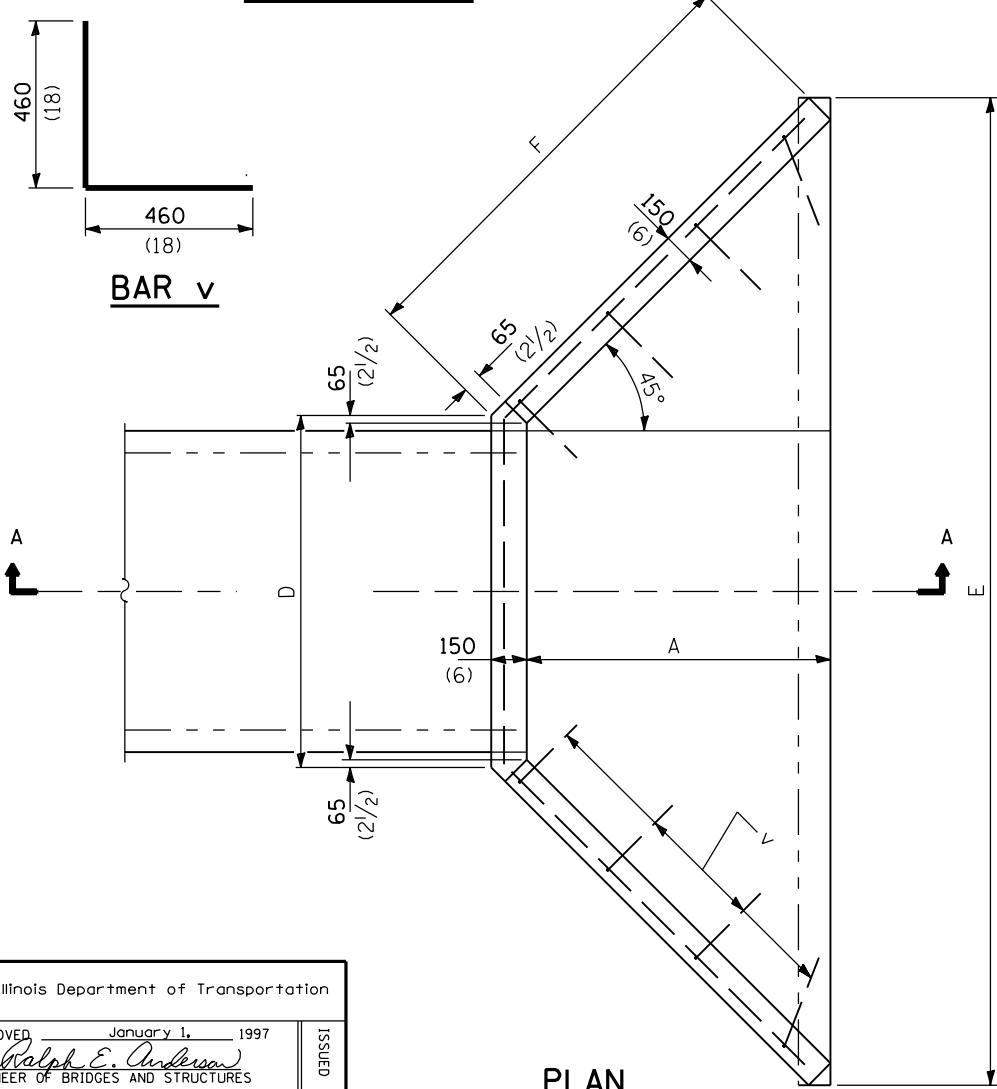
Mark	a	b
h	560 (22)	750 (29 1/2)
h ₁	560 (22)	980 (38 1/2)
h ₂	640 (25)	750 (29 1/2)
h ₃	640 (25)	980 (38 1/2)
h ₄	840 (33)	990 (39)
h ₅	840 (33)	1.26 m (4'-1 1/2")
h ₆	990 (39)	1.18 m (3'-10 1/2")
h ₇	990 (39)	1.50 m (4'-10 1/2")
h ₈	1.19 m (3'-11")	1.42 m (4'-8")
h ₉	1.19 m (3'-11")	1.77 m (5'-9 1/2")



END VIEW

SECTION A-A

TABLE OF DIMENSIONS

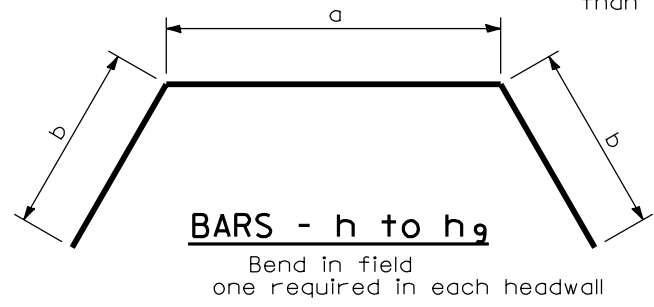


DESIGN NO.	NOMINAL INSIDE DIAM. of PIPE	SLOPE of FILL	Dimensions						Concrete 2 End Secs. m ³ (cu. yds.)	Reinforcement Bars -No. 15 (No. 4)			
			A	B	C	D	E	F		h-Bars		v-Bars No.	Total Wt. 2 End Secs. kg (lbs.)
										Mark	Length		
D375-1/2 (D15-1/2)	375 (15)	1:1/2	485 (19)	260 (10)	590 (23)	610 (24)	1.67 m (5'-5 1/2")	750 (29 1/2)	0.7 (0.9)	h	2.06 m (6'-9")	16	30 (40)
D375-2 (D15-2)	375 (15)	1:2	660 (26)	260 (10)	590 (23)	610 (24)	2.02 m (6'-7 1/2")	1 m (3'-3 1/4")	0.9 (1.2)	h ₁	2.52 m (8'-3")	22	40 (60)
D450-1/2 (D18-1/2)	450 (18)	1:1/2	485 (19)	330 (13)	660 (26)	690 (27)	1.75 m (5'-8 1/2")	750 (29 1/2)	1.0 (1.3)	h ₂	2.14 m (7'-0")	16	30 (40)
D450-2 (D18-2)	450 (18)	1:2	660 (26)	330 (13)	660 (26)	690 (27)	2.11 m (6'-10 1/2")	1 m (3'-3 1/4")	1.0 (1.3)	h ₃	2.6 m (8'-6")	22	40 (60)
D600-1/2 (D24-1/2)	600 (24)	1:1/2	640 (25)	410 (16)	840 (33)	890 (35)	2.26 m (7'-4 1/2")	970 (38)	1.1 (1.5)	h ₄	2.82 m (9'-3")	22	40 (60)
D600-2 (D24-2)	600 (24)	1:2	865 (34)	410 (16)	840 (33)	890 (35)	2.72 m (8'-10 1/2")	1.29 m (4'-2 1/2")	1.5 (2.0)	h ₅	3.24 m (11'-0")	28	50 (70)
D750-1/2 (D30-1/2)	750 (30)	1:1/2	770 (30)	480 (19)	990 (39)	1.05 m (3'-5")	2.68 m (8'-8 1/2")	1.15 m (3'-9")	1.5 (2.0)	h ₆	3.39 m (11'-0")	28	50 (70)
D750-2 (D30-2)	750 (30)	1:2	1.01 m (3'-4")	480 (19)	990 (39)	1.05 m (3'-5")	3.17 m (10'-4 1/2")	1.5 m (4'-11")	2.0 (2.6)	h ₇	3.99 m (13'-0")	34	60 (80)
D900-1/2 (D36-1/2)	900 (36)	1:1/2	915 (36)	560 (22)	1.17 m (3'-10")	1.25 m (4'-1")	3.17 m (10'-4 1/2")	1.36 m (4'-5 1/2")	2.0 (2.6)	h ₈	4.03 m (13'-3")	30	60 (80)
D900-2 (D36-2)	900 (36)	1:2	1.22 m (4'-0")	560 (22)	1.17 m (3'-10")	1.25 m (4'-1")	3.78 m (12'-4 1/2")	1.79 m (5'-10 1/2")	2.7 (3.5)	h ₉	4.73 m (15'-6")	40	70 (100)

* If embankment slope above headwall is flatter than 1:2, provide wings for 1:2 slope.

All slope ratios are expressed as units of vertical displacement to units of horizontal displacement (V:H).

All dimensions are in millimeters (inches) unless otherwise shown.



DATE	REVISIONS
1-1-97	Renum. Standard 1976-1.
6-15-94	Added slope note. Added Metric.

REINFORCED CONCRETE END SECTIONS FOR PIPE CULVERTS
375 mm (15") THRU 900 mm (36") DIA.
AT RIGHT ANGLES WITH ROADWAY

STANDARD 542101

Illinois Department of Transportation

APPROVED January 1, 1997
Ralph E. Anderson
 ENGINEER OF BRIDGES AND STRUCTURES

APPROVED January 1, 1997
Raymond H. Havel
 ENGINEER OF DESIGN AND ENVIRONMENT

ISSUED 1-1-97