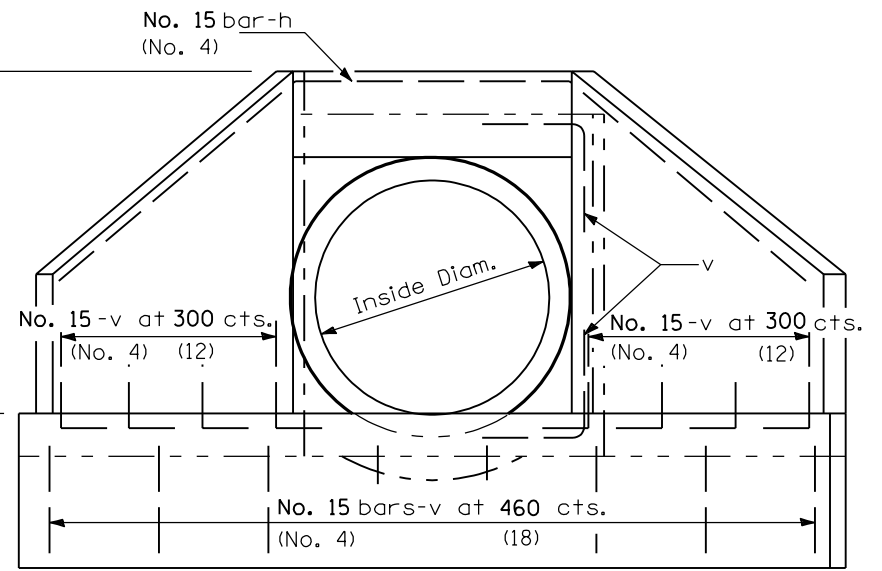
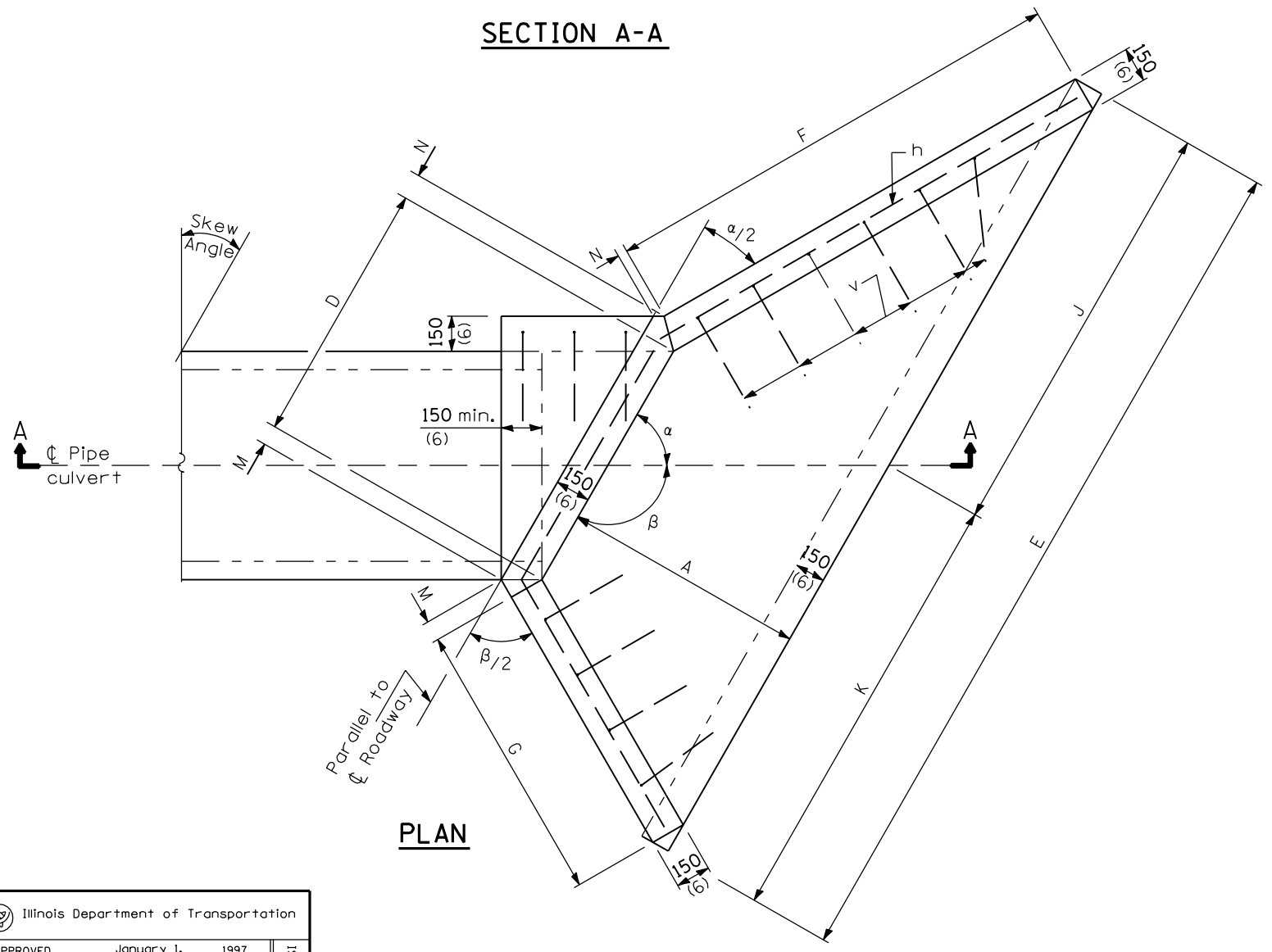


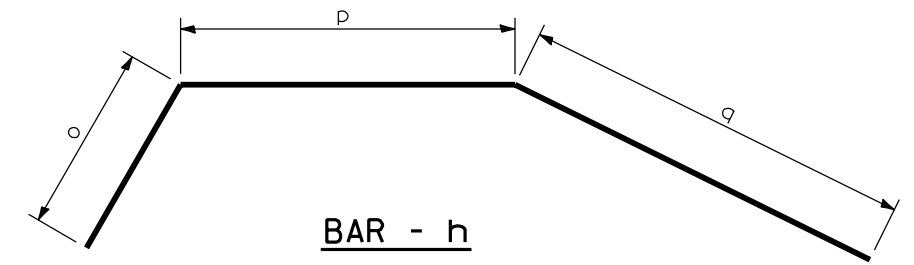
SECTION A-A



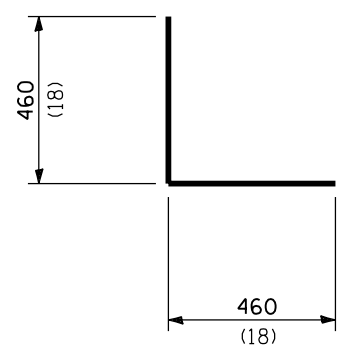
END VIEW



PLAN



BAR - h
Bent in field
one required for each headwall



BAR - v

GENERAL NOTES

- Build tops of headwalls parallel to grade line.
- * If embankment slope above headwall is flatter than 1:2, provide wings for 1:2 slope.
- All slope ratios are expressed as units of vertical displacement to units of horizontal displacement (V:H).
- All dimensions are in millimeters (inches) unless otherwise shown.

Illinois Department of Transportation

APPROVED January 1, 1997
Ralph E. Anderson
ENGINEER OF BRIDGES AND STRUCTURES

APPROVED January 1, 1997
Raymond
ENGINEER OF DESIGN AND ENVIRONMENT

ISSUED 1-1-97

DATE	REVISIONS
1-1-97	Renum. Standard 2051-2. Deleted DN Symbol.
6-15-94	Moved G.N. to Specs. Added slope note. Added Metric.

**REINFORCED CONCRETE END SECTIONS
FOR PIPE CULVERTS
375 mm (15") THRU 900 mm (36") DIA.
SKEWED WITH ROADWAY**
(Sheet 1 of 5)

STANDARD 542201

WINGS FOR 1:1 1/2 SLOPE


Skew Angle	Design No.	Nominal Dia. For Pipe	DIMENSIONS FOR CONCRETE												Concrete 2 End Secs. m ³ (yd ³)	Reinf. Bars - 2 End Secs.				Bars End Secs. kg (lbs)		
			A	B	C	D	E	F	G	H	J	K	M	N		α	h - bars				v-bars	
			(mm)	(mm)	(mm)	(mm)	(mm)	(mm)	(mm)	(mm)	(mm)	(mm)	(mm)	(mm)		(mm)	(mm)	(mm)	o		p	q
5°	DS 375-1 1/2	375	720	260	740	485	2.15 m	1.07 m	980	483	1.07 m	1.08 m	70	60	85°	1.1	1.01 m	551	1.09 m	2.65 m	28	45
	(DS 15-1 1/2)	(15)	(28)	(10)	(29)	(19)	(6'-5 3/4")	(3'-5 1/2")	(38)	(19)	(3'-5 3/4")	(3'-6")	(2 3/4)	(2 1/4)	(1.4)	(3'-6")	(21)	(3'-9")	(9'-0")	(70)	(70)	
	DS 450-1 1/2	450	720	330	810	561	2.22 m	1.07 m	980	559	1.11 m	1.11 m	70	60	85°	1.2	1.03 m	626	1.12 m	2.78 m	28	45
	(DS 18-1 1/2)	(18)	(28)	(13)	(32)	(22)	(7'-2 3/4")	(3'-5 1/2")	(38)	(22)	(3'-7 1/4")	(3'-7 1/2")	(2 3/4)	(2 1/4)	(1.6)	(3'-6")	(24)	(3'-9")	(9'-3")	(70)	(70)	
	DS 600-1 1/2	600	870	410	990	765	2.73 m	1.29 m	1.18 m	762	1.36 m	1.37 m	70	60	85°	1.7	1.23 m	832	1.33 m	3.39 m	32	52
	(DS 24-1 1/2)	(24)	(34)	(16)	(39)	(30)	(8'-10 3/4")	(4'-2 1/4")	(3'-10")	(30)	(4'-5 1/4")	(4'-5 1/2")	(2 3/4)	(2 1/4)	(2.2)	(4'-3")	(32)	(4'-7")	(11'-6")	(80)	(80)	
10°	DS 375-1 1/2	375	720	260	740	490	2.17 m	1.12 m	940	483	1.08 m	1.09 m	70	60	80°	1.2	972	557	1.14 m	2.67 m	28	45
	(DS 15-1 1/2)	(15)	(28)	(10)	(29)	(19 1/4)	(7'-0 1/2")	(3'-7 1/2")	(36 1/2)	(19)	(3'-6")	(3'-6 1/2")	(2 3/4)	(2 1/4)	(1.5)	(3'-4")	(22)	(3'-10")	(9'-0")	(70)	(70)	
	DS 450-1 1/2	450	720	330	810	568	2.24 m	1.12 m	940	559	1.11 m	1.13 m	70	60	80°	1.2	990	633	1.17 m	2.8 m	28	45
	(DS 18-1 1/2)	(18)	(28)	(13)	(32)	(22 1/4)	(7'-3 3/4")	(3'-7 1/2")	(36 1/2)	(22)	(3'-7 1/2")	(3'-8 1/4")	(2 3/4)	(2 1/4)	(1.6)	(3'-4")	(25)	(3'-10")	(9'-3")	(70)	(70)	
	DS 600-1 1/2	600	870	410	990	774	2.76 m	1.36 m	1.14 m	762	1.37 m	1.39 m	70	60	80°	1.7	1.18 m	841	1.4 m	3.42 m	34	55
	(DS 24-1 1/2)	(24)	(34)	(16)	(39)	(30 1/2)	(9'-0")	(4'-5")	(3'-8 1/2")	(30)	(4'-5 3/4")	(4'-6 1/4")	(2 3/4)	(2 1/4)	(2.2)	(4'-1")	(33)	(4'-8")	(11'-6")	(80)	(80)	
15°	DS 375-1 1/2	375	720	260	740	500	2.2 m	1.19 m	910	483	1.09 m	1.11 m	80	50	75°	1.2	942	567	1.2 m	2.71 m	28	45
	(DS 15-1 1/2)	(15)	(28)	(10)	(29)	(19 3/4)	(7'-2")	(3'-10")	(35 1/4)	(19)	(3'-6 1/2")	(3'-7 1/2")	(3)	(2)	(1.5)	(3'-4")	(22)	(4'-1")	(9'-3")	(70)	(70)	
	DS 450-1 1/2	450	720	330	810	579	2.28 m	1.19 m	910	559	1.13 m	1.15 m	80	50	75°	1.3	965	644	1.23 m	2.84 m	28	45
	(DS 18-1 1/2)	(18)	(28)	(13)	(32)	(22 3/4)	(7'-5 1/4")	(3'-10")	(35 1/4)	(22)	(3'-8")	(3'-9 1/4")	(3)	(2)	(1.7)	(3'-4")	(25)	(4'-1")	(9'-6")	(70)	(70)	
	DS 600-1 1/2	600	870	410	990	789	2.8 m	1.43 m	1.1 m	762	1.39 m	1.41 m	80	50	75°	1.8	1.15 m	857	1.47 m	3.47 m	34	55
	(DS 24-1 1/2)	(24)	(34)	(16)	(39)	(31)	(9'-2")	(4'-7 3/4")	(3'-6 3/4")	(30)	(4'-6 1/2")	(4'-7 1/2")	(3)	(2)	(2.3)	(4'-0")	(34)	(4'-11")	(11'-9")	(80)	(80)	
20°	DS 375-1 1/2	375	720	260	740	514	2.26 m	1.26 m	880	483	1.11 m	1.15 m	80	50	70°	1.2	916	581	1.27 m	2.77 m	28	45
	(DS 15-1 1/2)	(15)	(28)	(10)	(29)	(20 1/4)	(7'-4")	(4'-0 3/4")	(34 1/4)	(19)	(3'-7 1/4")	(3'-8 3/4")	(3)	(2)	(1.6)	(39)	(23)	(4'-4")	(9'-6")	(70)	(70)	
	DS 450-1 1/2	450	720	330	810	595	2.34 m	1.26 m	880	559	1.15 m	1.19 m	80	50	70°	1.3	938	661	1.31 m	2.9 m	28	45
	(DS 18-1 1/2)	(18)	(28)	(13)	(32)	(23 1/2)	(7'-7 1/2")	(4'-0 3/4")	(34 1/4)	(22)	(3'-9")	(3'-10 1/2")	(3)	(2)	(1.7)	(39)	(26)	(4'-4")	(9'-9")	(70)	(70)	
	DS 600-1 1/2	600	870	410	990	811	2.87 m	1.52 m	1.07 m	762	1.42 m	1.45 m	80	50	70°	1.8	1.11 m	879	1.56 m	3.55 m	38	61
	(DS 24-1 1/2)	(24)	(34)	(16)	(39)	(32)	(9'-4 1/2")	(4'-11 1/4")	(3'-5 1/2")	(30)	(4'-7 1/2")	(4'-9")	(3)	(2)	(2.4)	(3'-11")	(35)	(5'-2")	(12'-0")	(90)	(90)	
25°	DS 375-1 1/2	375	720	260	740	533	2.33 m	1.34 m	860	483	1.14 m	1.19 m	90	50	65°	1.2	893	600	1.36 m	2.85 m	28	45
	(DS 15-1 1/2)	(15)	(28)	(10)	(29)	(21)	(7'-7")	(4'-4")	(33 1/4)	(19)	(3'-8 1/2")	(3'-10 1/2")	(3 1/4)	(1 3/4)	(1.6)	(39)	(23)	(4'-7")	(9'-9")	(70)	(70)	
	DS 450-1 1/2	450	720	330	810	617	2.42 m	1.34 m	860	559	1.19 m	1.23 m	90	50	65°	1.4	914	683	1.39 m	2.99 m	32	51
	(DS 18-1 1/2)	(18)	(28)	(13)	(32)	(24 1/4)	(7'-10 1/4")	(4'-4")	(33 1/4)	(22)	(3'-10 1/4")	(4'-0")	(3 1/4)	(1 3/4)	(1.8)	(38)	(27)	(4'-7")	(10'-0")	(80)	(80)	
	DS 600-1 1/2	600	870	410	990	841	2.97 m	1.62 m	1.04 m	762	1.46 m	1.51 m	90	50	65°	1.9	1.09 m	909	1.66 m	3.65 m	38	61
	(DS 24-1 1/2)	(24)	(34)	(16)	(39)	(33)	(9'-8 1/2")	(5'-3 1/4")	(3'-4 1/4")	(30)	(4'-9 1/4")	(4'-11 1/4")	(3 1/4)	(1 3/4)	(2.5)	(3'-10")	(35)	(5'-6")	(12'-3")	(90)	(90)	
30°	DS 375-1 1/2	375	720	260	740	558	2.43 m	1.44 m	830	483	1.19 m	1.24 m	90	40	60°	1.3	873	626	1.46 m	2.95 m	36	57
	(DS 15-1 1/2)	(15)	(28)	(10)	(29)	(22)	(7'-10 3/4")	(4'-8")	(32 1/4)	(19)	(3'-10 1/4")	(4'-0 1/2")	(3 1/2)	(1 1/2)	(1.7)	(37)	(24)	(4'-11")	(10'-0")	(90)	(90)	
	DS 450-1 1/2	450	720	330	810	645	2.52 m	1.44 m	830	559	1.23 m	1.29 m	90	40	60°	1.5	893	712	1.49 m	3.1 m	36	57
	(DS 18-1 1/2)	(18)	(28)	(13)	(32)	(25 1/2)	(8'-2 1/4")	(4'-8")	(32 1/4)	(22)	(4'-0")	(4'-2 1/4")	(3 1/2)	(1 1/2)	(1.9)	(38)	(28)	(5'-0")	(10'-6")	(90)	(90)	
	DS 600-1 1/2	600	870	410	990	880	3.1 m	1.74 m	1.01 m	762	1.52 m	1.58 m	90	40	60°	2.1	1.06 m	949	1.78 m	3.79 m	40	64
	(DS 24-1 1/2)	(24)	(34)	(16)	(39)	(34 3/4)	(10'-1 1/4")	(5'-8")	(3'-3 1/4")	(30)	(4'-11 1/2")	(5'-1 3/4")	(3 1/2)	(1 1/2)	(2.7)	(3'-9")	(37)	(5'-11")	(12'-9")	(100)	(100)	

All dimensions are in millimeters (inches) unless otherwise shown.

All slope ratios are expressed as units of vertical displacement to units of horizontal displacement (V:H).

**REINFORCED CONCRETE END SECTIONS
FOR PIPE CULVERTS
375 mm (15") THRU 900 mm (36") DIA.
SKEWED WITH ROADWAY**
(Sheet 2 of 5)

STANDARD 542201

 Illinois Department of Transportation	APPROVED _____ January 1, 1997	ISSUED 1-16-97
	<i>Ralph E. Anderson</i> ENGINEER OF BRIDGES AND STRUCTURES	
	APPROVED _____ January 1, 1997	
	<i>Ray Stoddard</i> ENGINEER OF DESIGN AND ENVIRONMENT	

