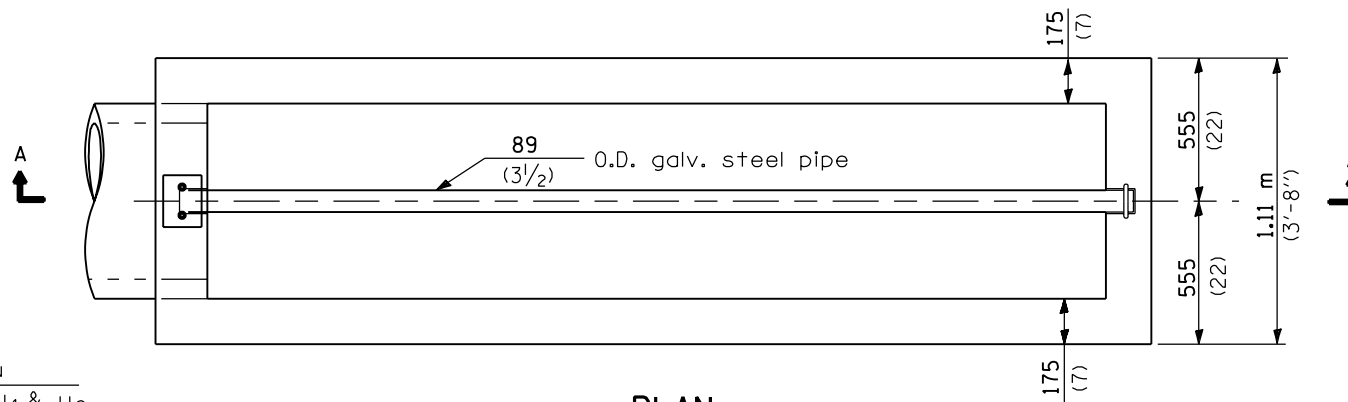


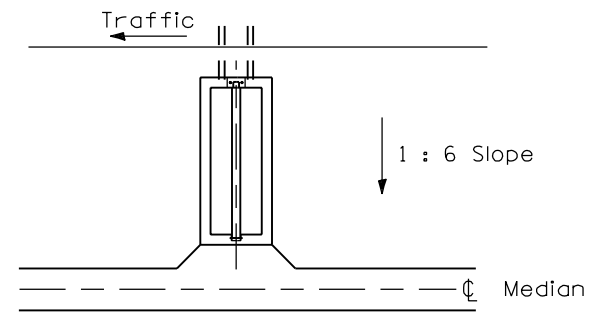
**SECTION A-A**

Material required for one inlet box

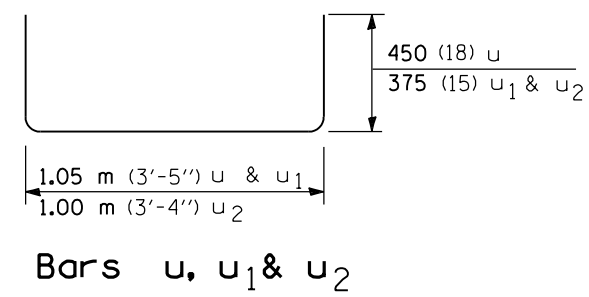
Bar	Qty.	Size	Length
h	10	No. 15 (No. 4)	3.65 m (12'-0")
u	13	No. 15 (No. 4)	1.95 m (6'-5")
u <sub>1</sub>	3	No. 15 (No. 4)	1.80 m (5'-11")
u <sub>2</sub>	2	No. 15 (No. 4)	1.75 m (5'-10")
v	8	No. 15 (No. 4)	760 (30)
v <sub>1</sub>	6	No. 15 (No. 4)	610 (24)
v <sub>2</sub>	6	No. 15 (No. 4)	460 (18)
Concrete Cast-in-place or Precast		m <sup>3</sup> (cu. yds.)	1.45 (1.9)
Reinf. Bars		kg (lbs.)	131 (183)
Galv. Steel Pipe		89 O.D. (3 1/2)	3.71 m (12'-2 1/4")



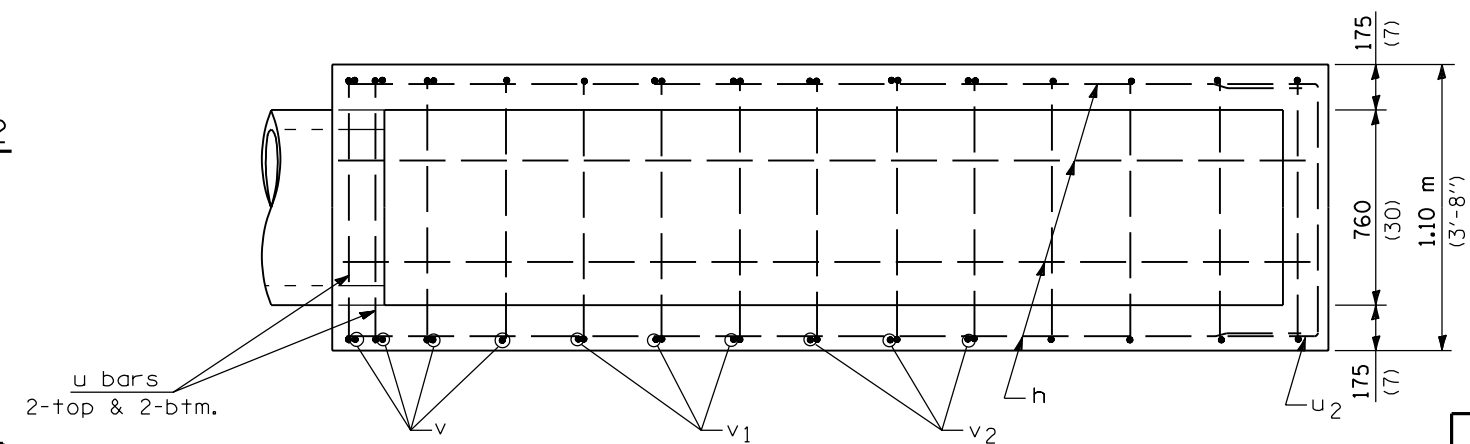
**PLAN**



Sketch showing location and direction of box in relation to median.



**Bars u, u<sub>1</sub> & u<sub>2</sub>**



**PLAN OF REINFORCEMENT**

**GENERAL NOTES**

All slope ratios are expressed as units of vertical displacement to units of horizontal displacement (V:H).  
All dimensions are in millimeters (inches) unless otherwise shown.

Illinois Department of Transportation

PASSED January 1, 1997  
 ENGINEER OF POLICE AND PROCEDURES  
 APPROVED January 1, 1997  
 ENGINEER OF DESIGN AND ENVIRONMENT

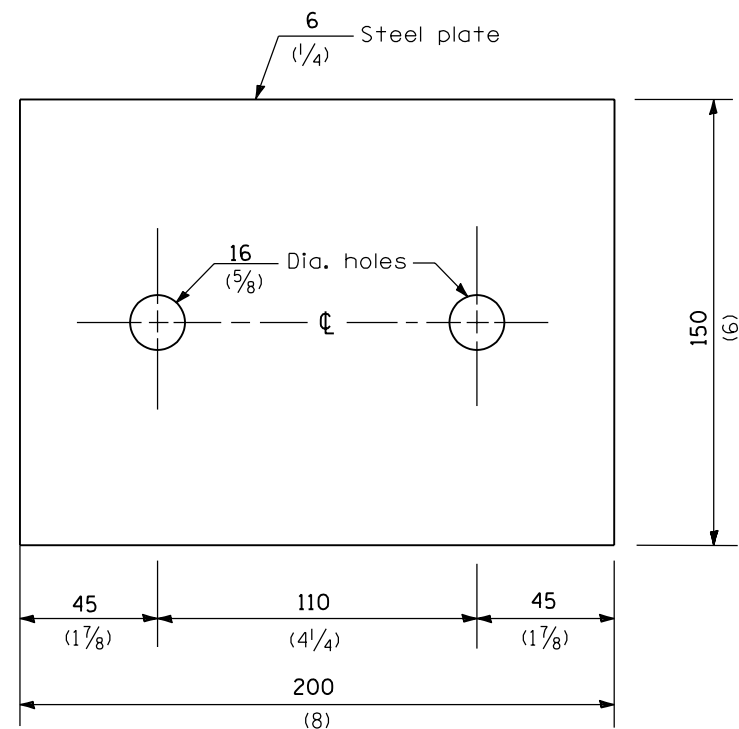
ISSUED 1-1-97

DATE	REVISIONS
1-1-97	Renum. Standard 2244-9.
6-15-94	Moved G.N. to Specs. Revised title. Added Metric and slope note.

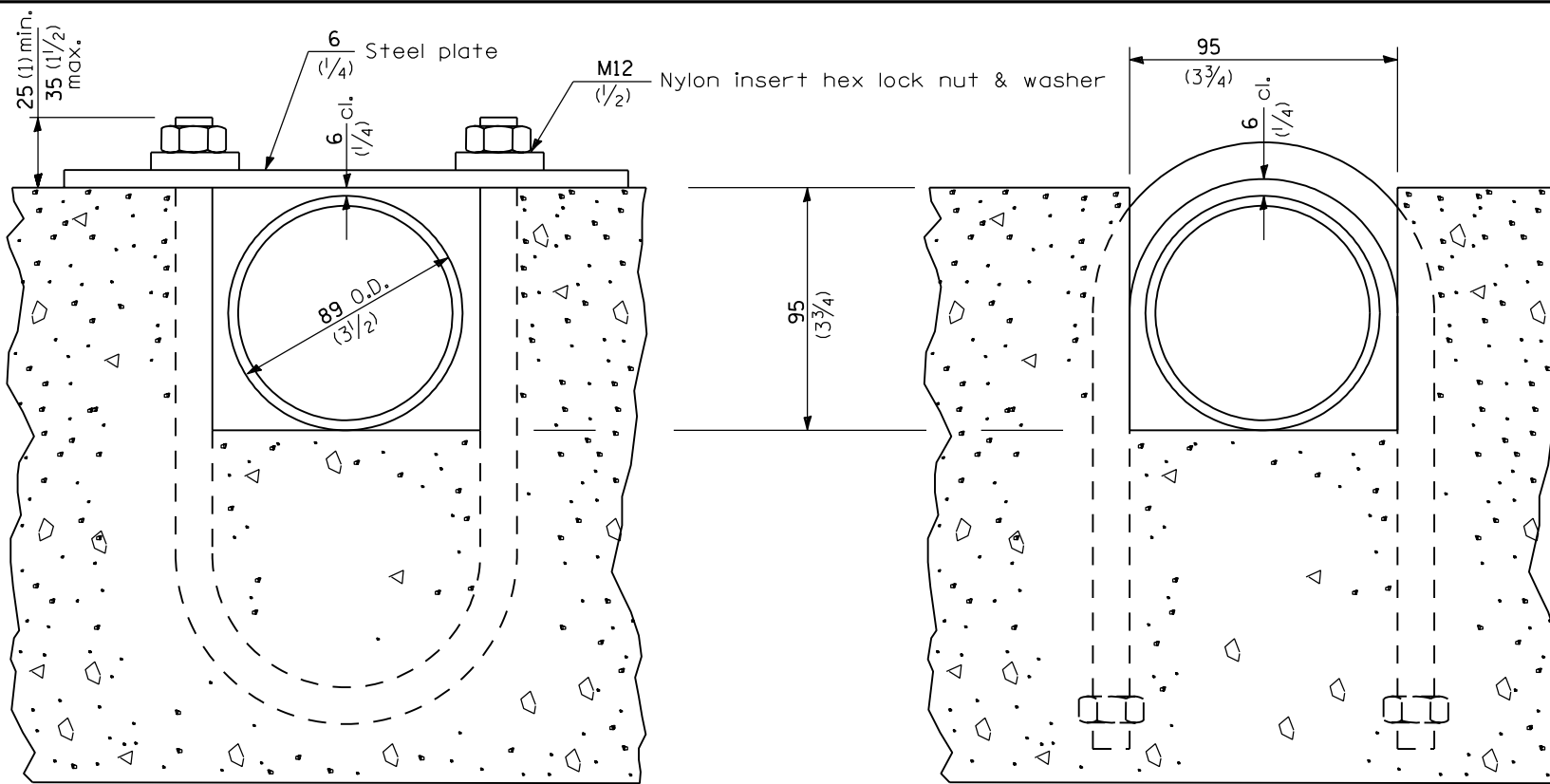
**INLET BOX  
TYPE 600 (24) C**

(Sheet 1 of 2)

**STANDARD 542511**

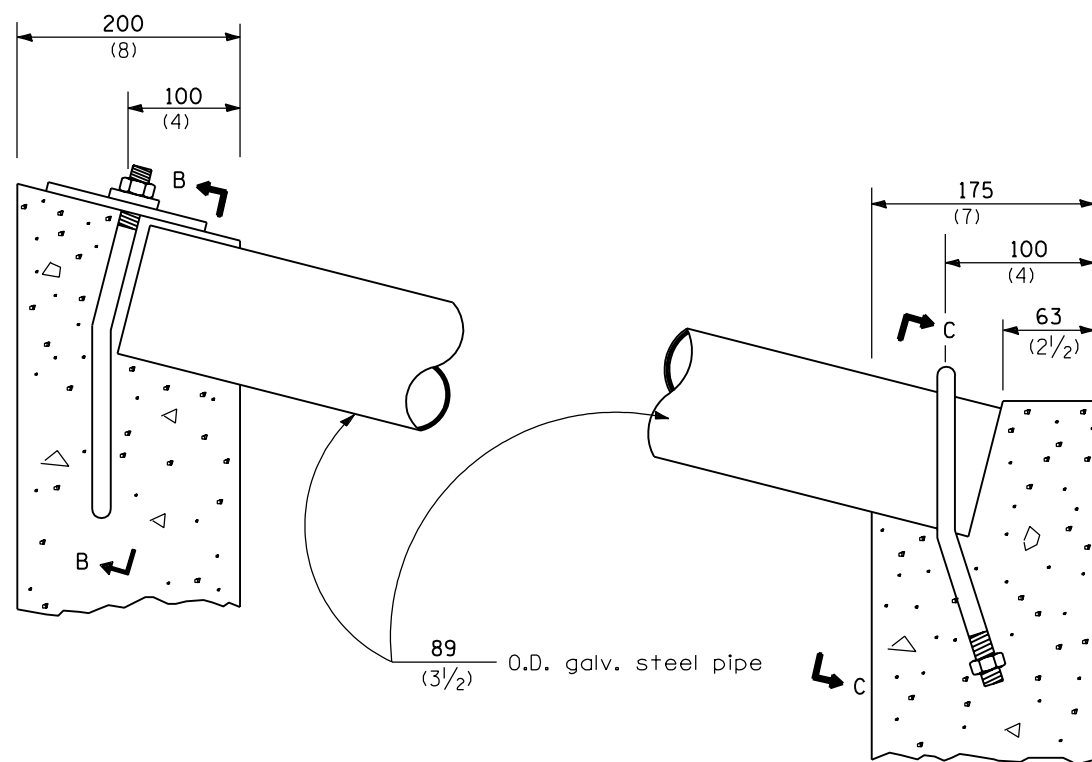


**TOP ANCHOR PLATE**  
(1 - required)

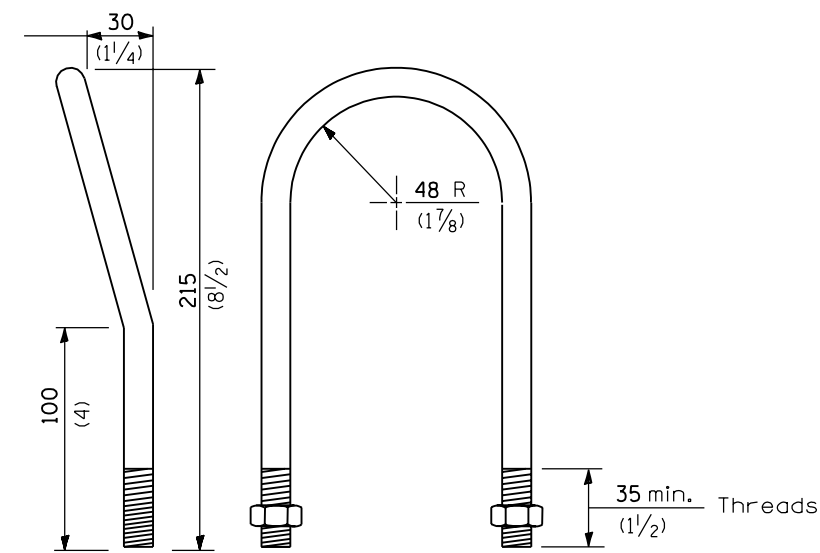


**SECTION B-B**

**SECTION C-C**



**DETAIL AT BLOCKOUTS**



**M12 (1/2) U BOLT**  
(2 - required)

All dimensions are in millimeters (inches) unless otherwise shown.

**INLET BOX  
TYPE 600 (24) C**

(Sheet 2 of 2)

**STANDARD 542511**

Illinois Department of Transportation	
PASSED	January 1, 1997
ENGINEER OF POLICY AND PROCEDURES	
APPROVED	January 1, 1997
ENGINEER OF DESIGN AND ENVIRONMENT	
ISSUED	1-1-97