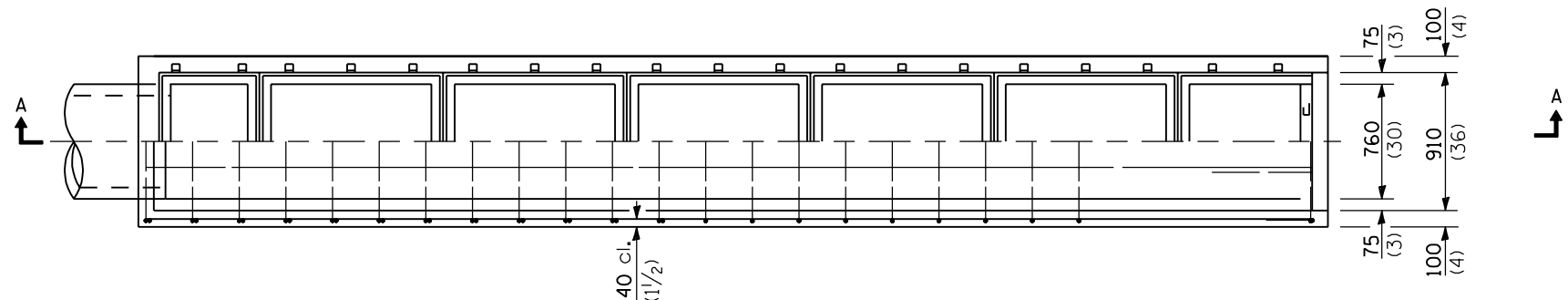
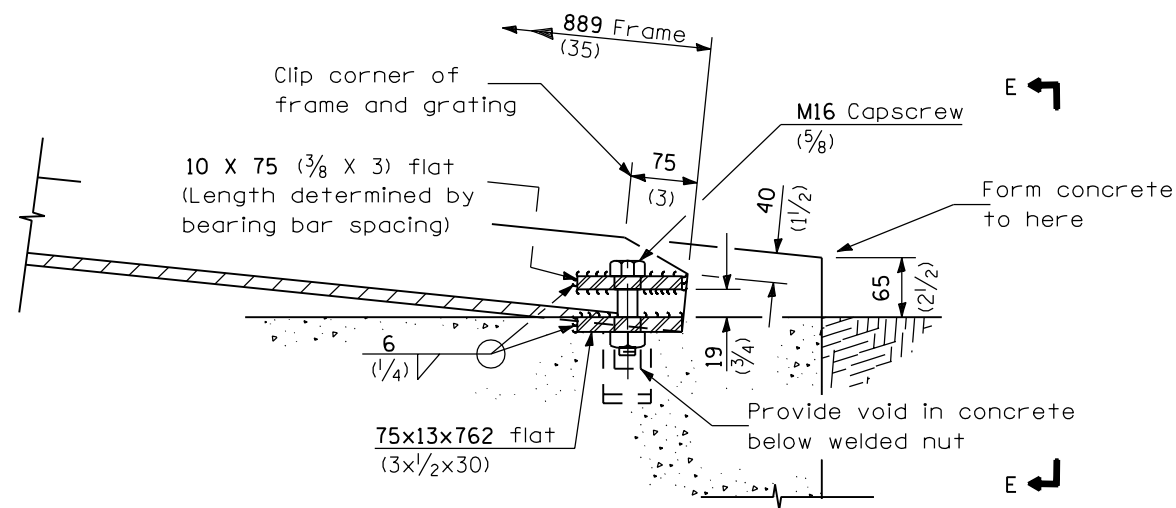


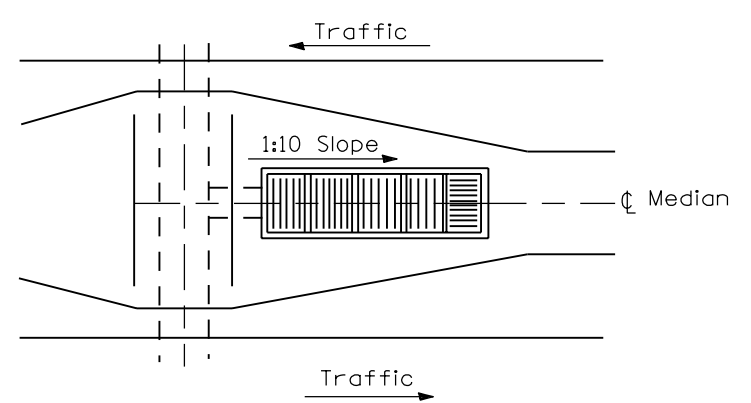
SECTION A-A



PLAN



DETAIL A



Sketch showing location and direction of main bearing bars in relation to ϕ median

GENERAL NOTES

The dimensions of the steel angle frames shall be as shown except that the 89 mm (3 1/2") leg dimension may vary according to type of grating used. In all cases, the surface shall be flush with the top edge of frame, sidewalls, and headwall. All frames shall be galvanized and anchored in concrete. They shall be factory assembled and all joints shall be welded per detail.

It is desirable to have 50 mm (2") of slope on the bottom of the inlet box if field conditions will permit.

All slope ratios are expressed as units of vertical displacement to units of horizontal displacement (V:H).

All dimensions are in millimeters (inches) unless otherwise shown.

DATE	REVISIONS
1-1-97	Renum. Standard 2357-3.
6-15-94	Moved G.N. to specs. Redrawn on 2 pages. Added metric. Rev. title.

**INLET BOX TYPE F
600 mm (24")**

(Sheet 1 of 2)

STANDARD 542526

Illinois Department of Transportation

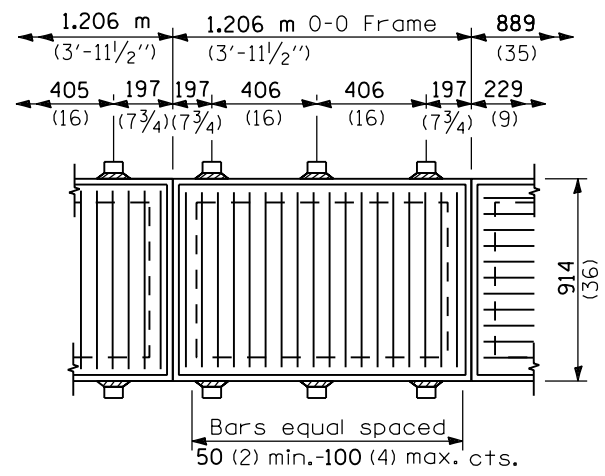
PASSED January 1, 1997

ENGINEER OF POLICE AND PROCEDURES

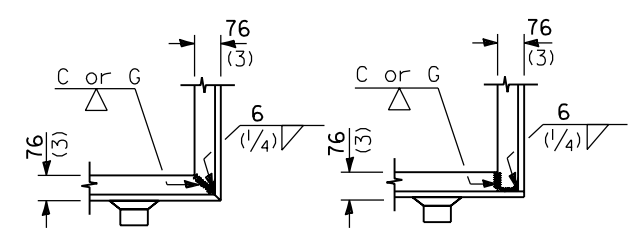
APPROVED January 1, 1997

ENGINEER OF DESIGN AND ENVIRONMENT

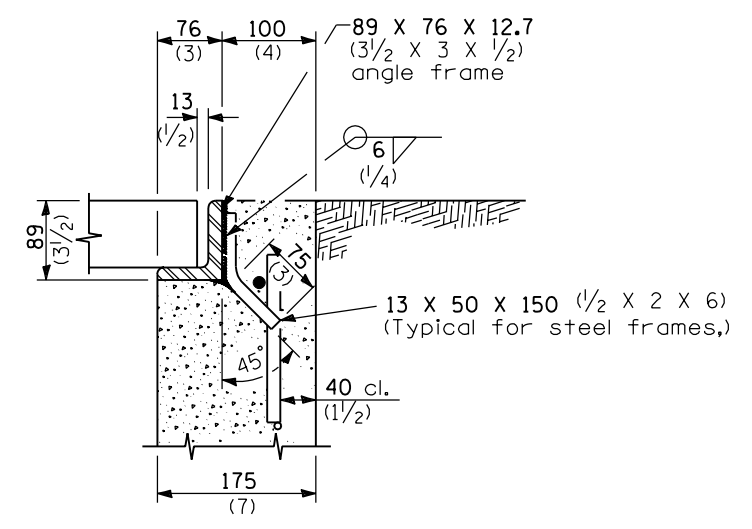
ISSUED 1-1-97



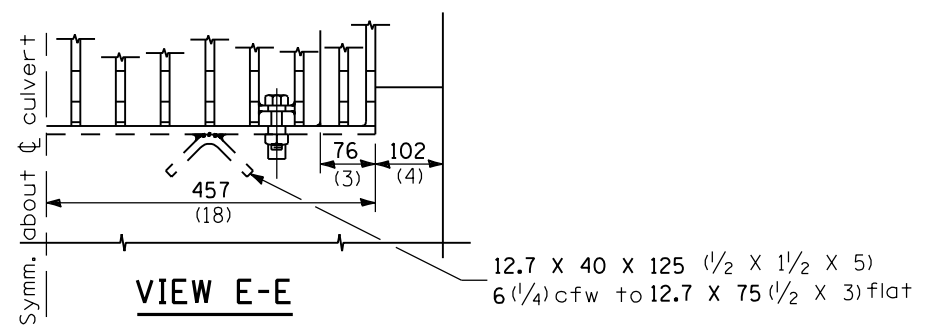
TYPICAL STEEL GRATING



TYPICAL CORNER OF STEEL GRATING FRAME

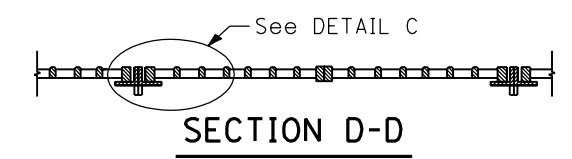
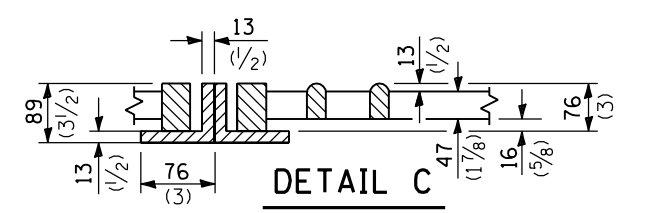
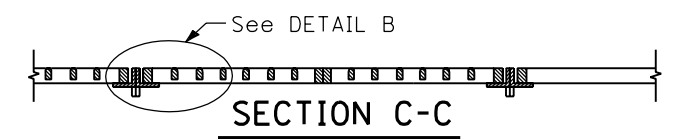
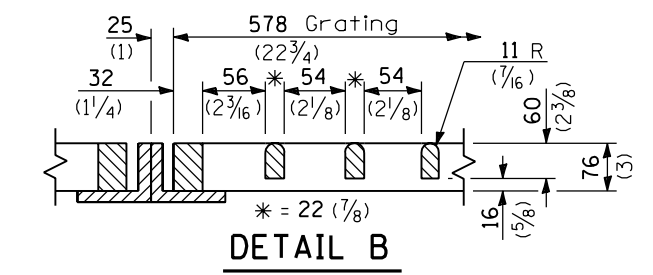
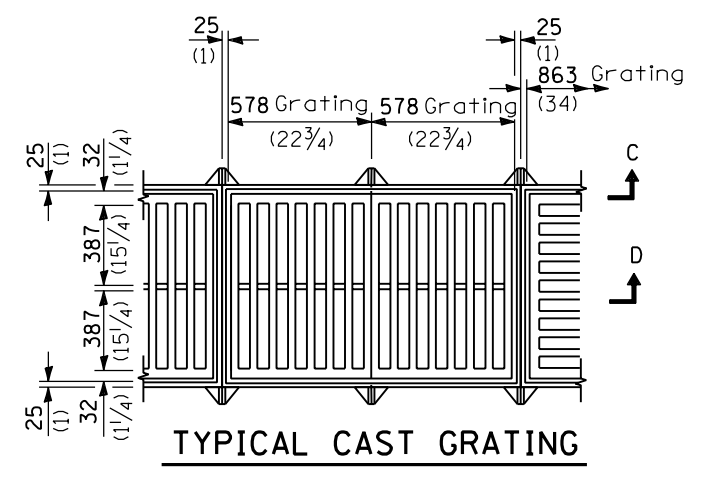
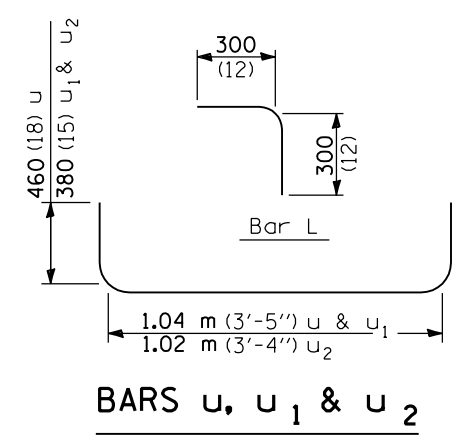


SECTION B-B



Material Required for One Inlet Box

Bar	No.	Size	Length
h	6	No. 15 (No. 4)	7.62 m (25'-0")
h ₁	2	No. 15 (No. 4)	3.35 m (11'-0")
L	4	No. 15 (No. 4)	600 (24)
u	17	No. 15 (No. 4)	1.96 m (6'-5")
u ₁	6	No. 15 (No. 4)	1.80 m (5'-11")
u ₂	2	No. 15 (No. 4)	1.78 m (5'-10")
v	2	No. 15 (No. 4)	760 (30)
v ₁	6	No. 15 (No. 4)	690 (27)
v ₂	6	No. 15 (No. 4)	610 (24)
v ₃	10	No. 15 (No. 4)	460 (18)
Concrete-Cast in place or Precast	m ³ (cu. yds.)		2.6 (3.4)
Reinf. Bars	kg (lbs.)		183 (250)
Grating	m ² (sq. ft.)		6.54 (70.4)



All dimensions are in millimeters (inches) unless otherwise shown.

INLET BOX TYPE F
600 mm (24")
(Sheet 2 of 2)

STANDARD 542526

Illinois Department of Transportation

PASSED January 1, 1997

ISSUED 1-6-97

ENGINEER OF POLICE AND PROCEDURES

APPROVED January 1, 1997

ENGINEER OF DESIGN AND ENVIRONMENT