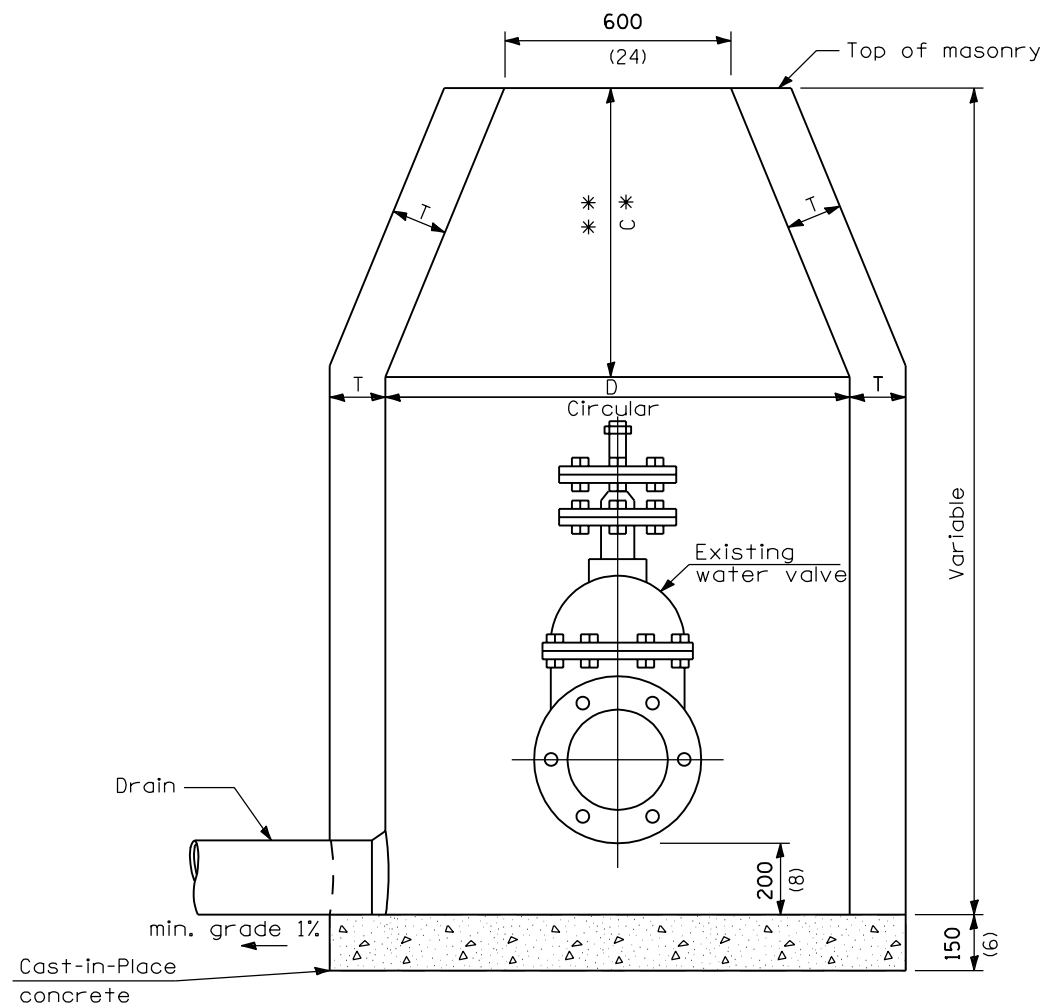


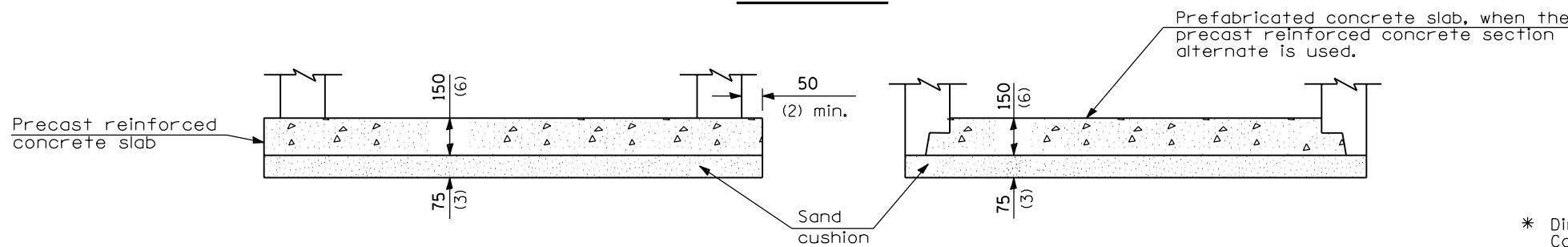
The cone of the valve vault shall be constructed as shown above only when there is interference with underground conditions and those conditions cannot be altered.



ELEVATION

ALTERNATE MATERIALS FOR WALLS	D	C	T (min.)
Concrete Masonry Unit	1.2 m (4'-0")	750 (30)	125 (5)
	1.5 m (5'-0")	1.15 m (3'-9")	125 (5)
Brick Masonry	1.2 m (4'-0")	750 (30)	200 (8)
	1.5 m (5'-0")	1.15 m (3'-9")	200 (8)
Precast Reinforced Concrete Section	1.2 m (4'-0")	750 (30)	100 (4)
	1.5 m (5'-0")	1.15 m (3'-9")	125 (5)
Cast-in-Place Concrete	1.2 m (4'-0")	750 (30)	150 (6)
	1.5 m (5'-0")	1.15 m (3'-9")	150 (6)

DIAMETER OF WATER MAIN	D
200 (8) and under	1.2 m (4'-0")
250 (10) and over	1.5 m (5'-0")



ALTERNATE METHODS

GENERAL NOTES

- * Dimension "C" for Precast Reinforced Concrete Section may vary from the dimension given to plus 150 mm (6").
- ** See Standard 602601 for optional Precast Reinforced Concrete Flat Top Slab.

All dimensions are in millimeters (inches) unless otherwise shown.

Illinois Department of Transportation

PASSED January 1, 1997

ENGINEER OF POLICY AND PROCEDURES

APPROVED January 1, 1997

ENGINEER OF DESIGN AND ENVIRONMENT

ISSUED 1-1-97

DATE	REVISIONS
1-1-97	Renum. Standard 1526-8
6-15-94	Moved G.N. to Specs. Added Metric.

VALVE VAULT TYPE A

STANDARD 602501