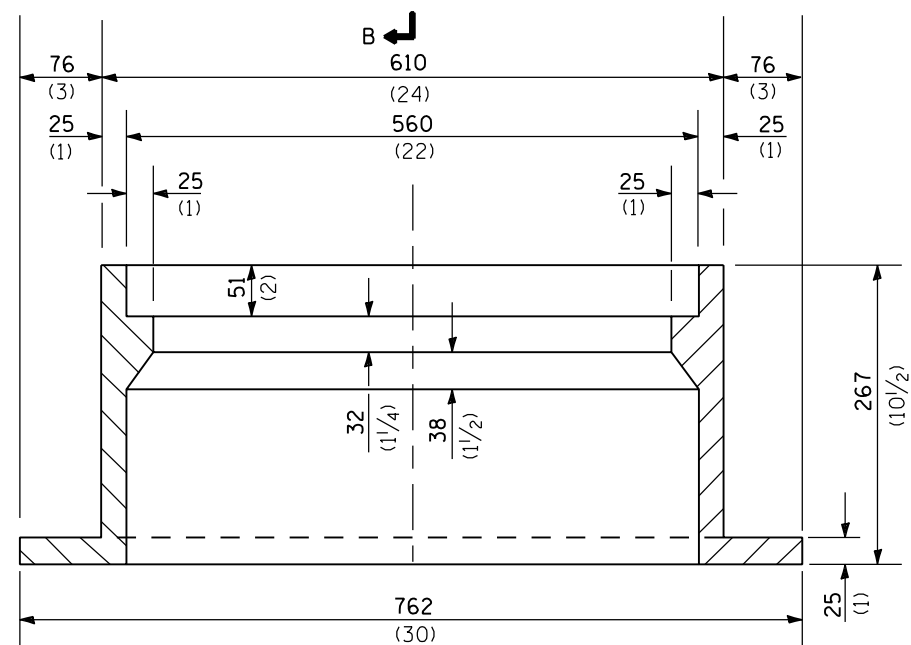
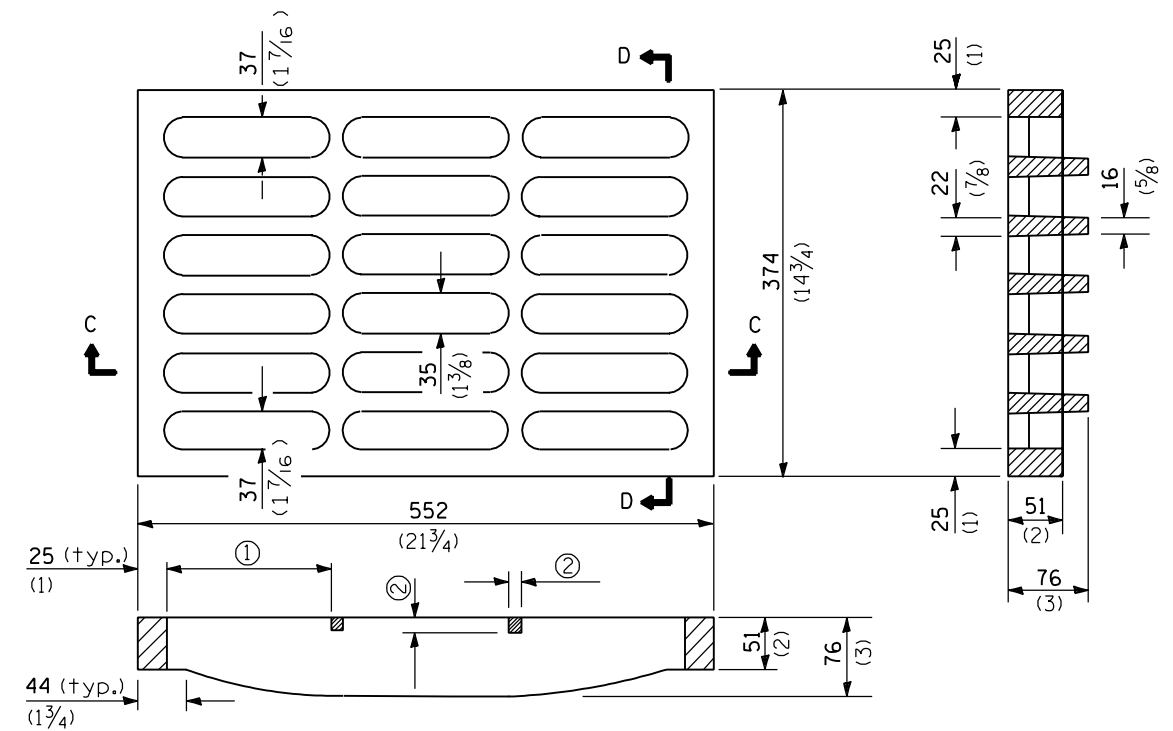


SECTION B-B



SECTION A-A

CAST FRAME



SECTION C-C

- ① = 159 (6 1/4) max. (typ.)
- ② = 19 (3/4) min. (typ.)

SECTION D-D

CAST GRATE

All dimensions are in millimeters (inches) unless otherwise shown.

Illinois Department of Transportation

PASSED January 1, 2004
Michael Brand
 ENGINEER OF POLICY AND PROCEDURES

APPROVED January 1, 2004
Michael L. Hine
 ENGINEER OF DESIGN AND ENVIRONMENT

ISSUED 1-1-97

DATE	REVISIONS
1-1-04	Removed weights.
1-1-97	Renum. Standard 2223-4.

**FRAME AND GRATE
TYPE 4**

STANDARD 604016-01