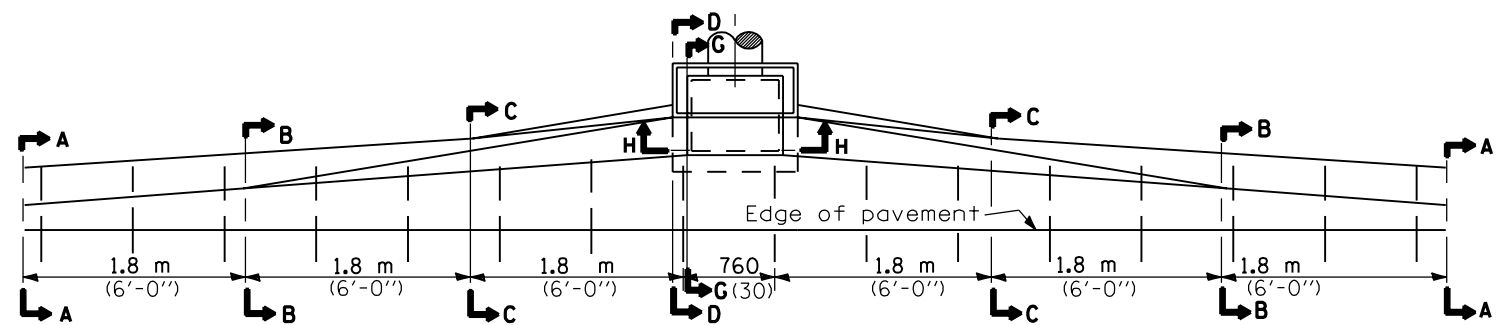
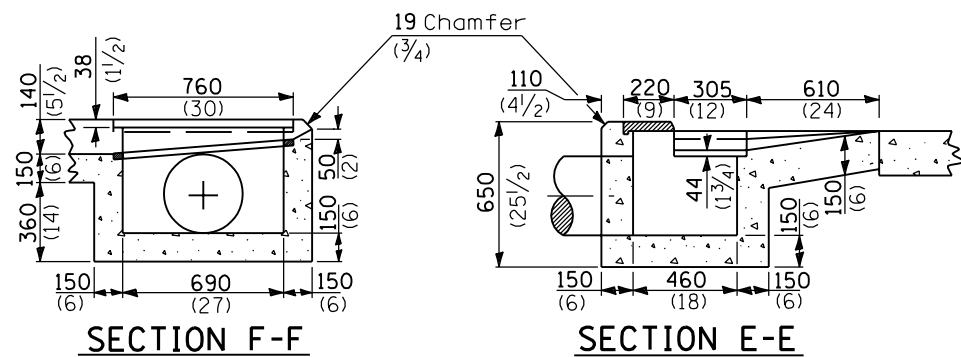


PLAN - SINGLE OUTLET

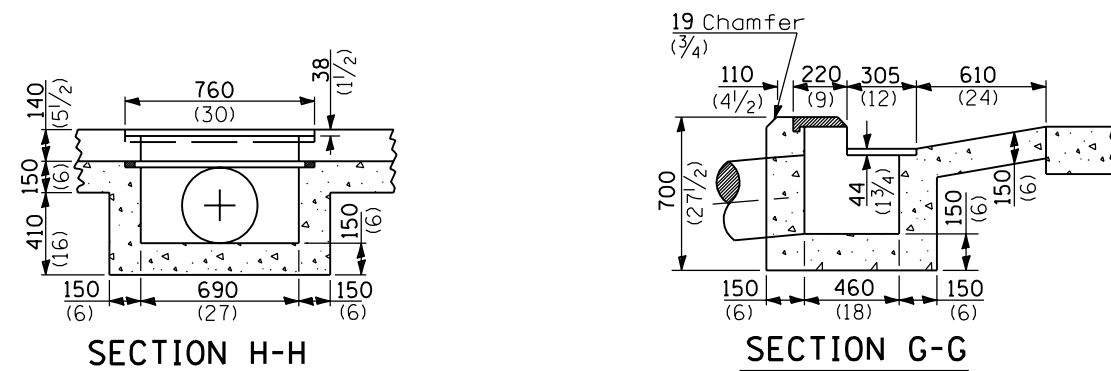


PLAN - DOUBLE OUTLET



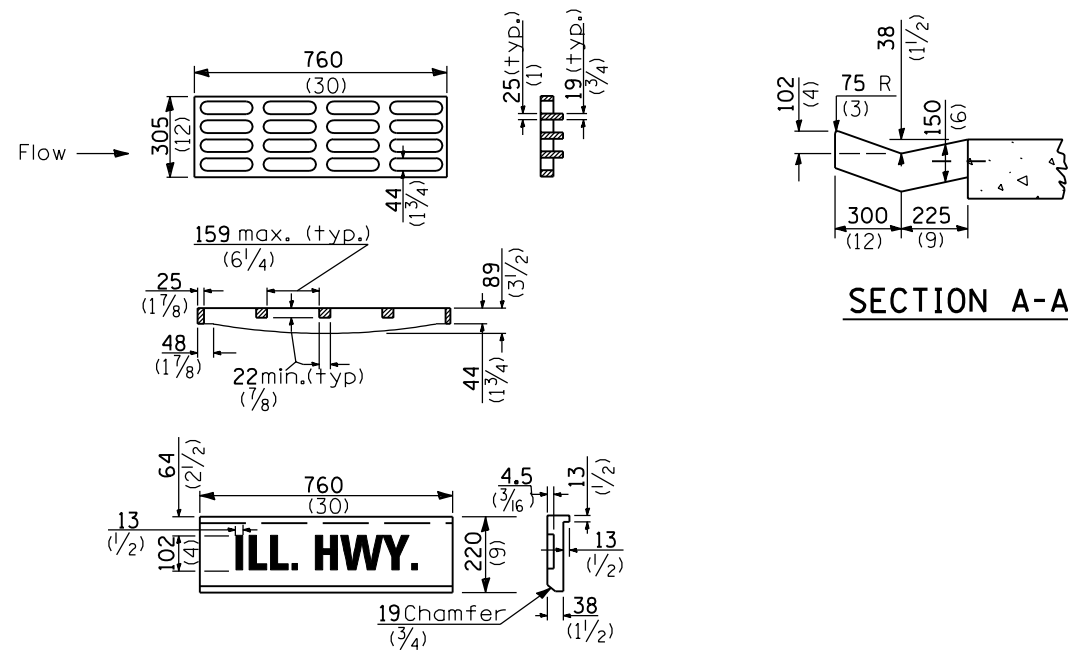
SECTION F-F

SECTION E-E

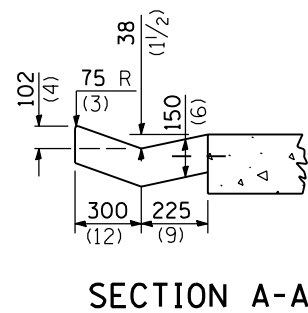


SECTION H-H

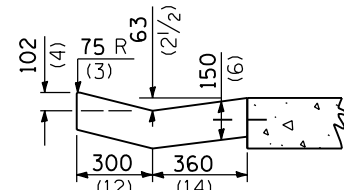
SECTION G-G



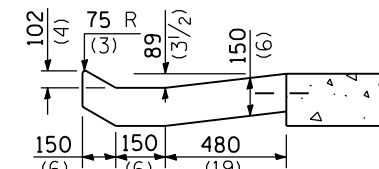
GRATE AND COVER TYPE 2B



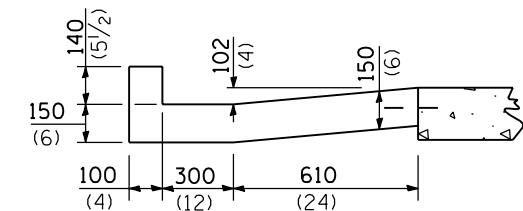
SECTION A-A



SECTION B-B



SECTION C-C



SECTION D-D

GENERAL NOTES

If the average grade of pavement for the distance A-E exceeds 2 percent, this distance shall be increased 1.8 m (6 ft.) for each 1 percent increase in grade.

The gutter outlet shall be tied to the pavement in accordance with details for longitudinal construction joint shown on Standard 420001.

All dimensions are in millimeters (inches) unless otherwise shown.

QUANTITIES

Material	Single	Double
Concrete - m ³ (cu. yd.)	1.24 (1.62)	1.67 (2.18)
Cast Iron Grate - Ea. 43 kg (95 lbs.)	1	1
Cast Iron Cover - Ea. 74 kg (104 lbs.)	1	1
Pipe Drain - Dia. mm (in.)	300 (12)	375 (15)

DATE	REVISIONS
1-1-00	Changed 400 to 375 in Quantities Table
1-1-97	Renum. Standard 1796-7.

OUTLETS TYPE 2 FOR TYPE B GUTTER

STANDARD 606211-01

Illinois Department of Transportation

PASSED January 1, 2000

ENGINEER OF POLICE AND PROCEDURES

APPROVED January 1, 2000

ENGINEER OF DESIGN AND ENVIRONMENT

ISSUED 1-1-97