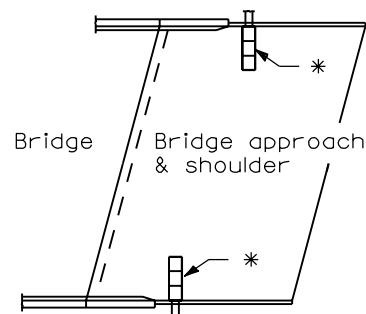
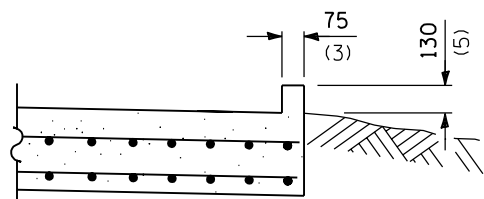


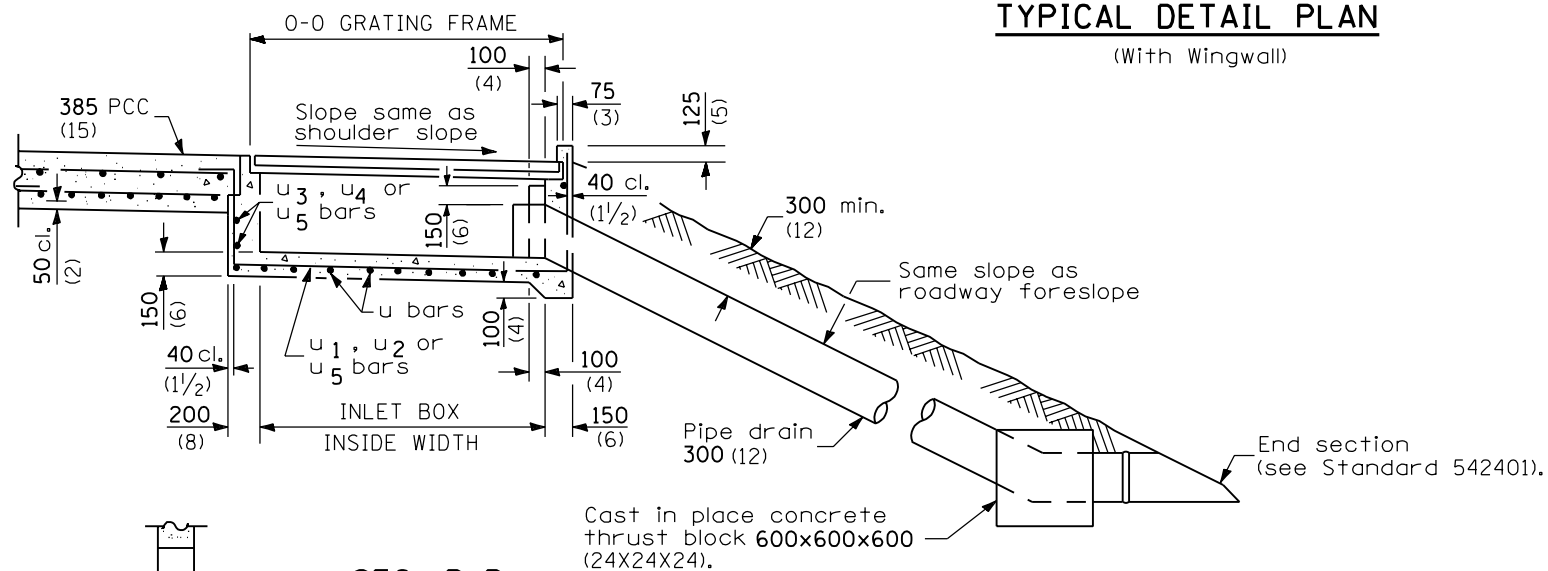
\* Type B, C, or D inlet box as required.



**GENERAL PLAN**

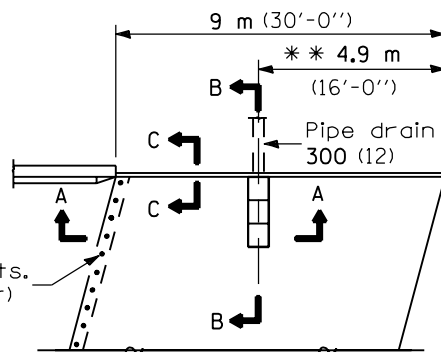
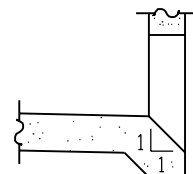


**SECTION C-C**



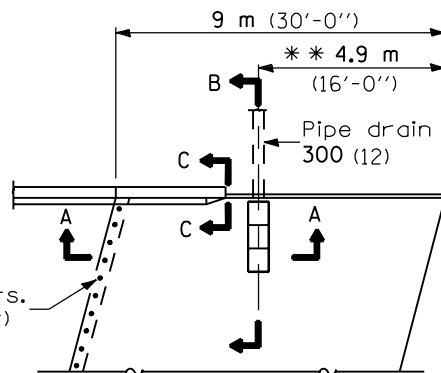
**SEC. B-B**

**BOX OUTLET WHEN PRECAST**



**TYPICAL DETAIL PLAN (W/O Wingwall)**

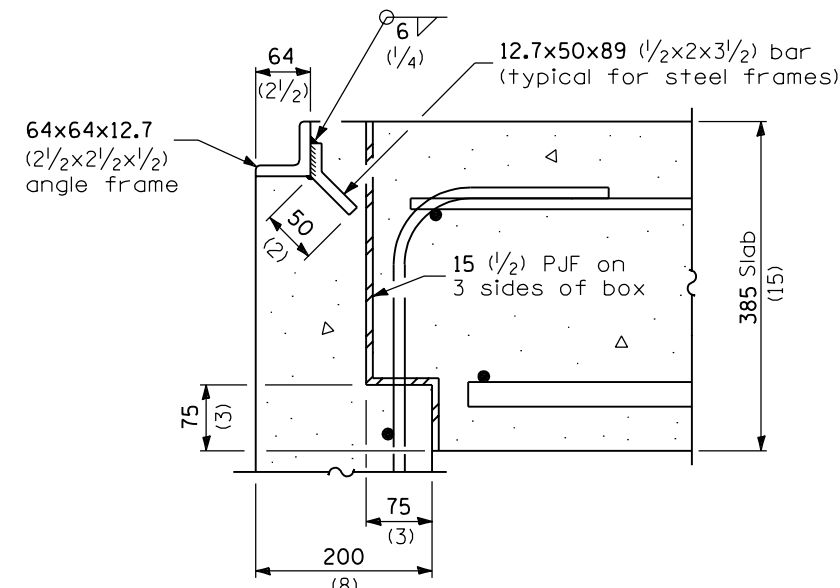
Tie bars at 300 (12) cts. (by Bridge Contractor)



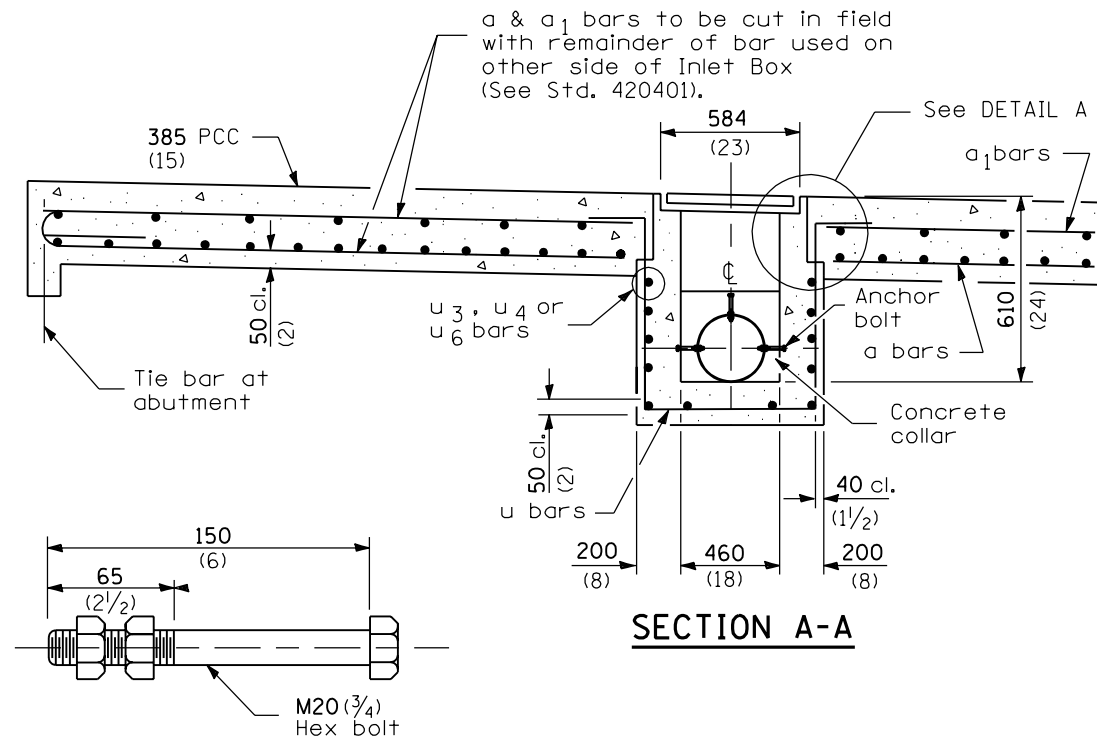
**TYPICAL DETAIL PLAN (With Wingwall)**

Tie bars at 300 (12) cts. (by Bridge Contractor)

\*\* Vary this dimension as needed to position the Inlet Box and Pipe Drain between the proposed approach guardrail posts.



**DETAIL A**



**SECTION A-A**

**ANCHOR BOLT**

(Used to tie pipe to concrete collar)

**GENERAL NOTES**

All exposed edges of the inlet, except the upper perimeter, shall be beveled 20 mm (3/4 inch).

All dimensions are in millimeters (inches) unless otherwise shown.

INLET TYPE	SHOULDER WIDTH	0-0 GRATING FRAME	INLET BOX INSIDE WIDTH	INLET BOX INSIDE LENGTH
Type B	Less than 1.5 m (5')	0.690 m (2'-3")	0.560 m (1'-10")	460 (18)
Type C	1.5 - 1.8 m (5' - 6')	1.325 m (4'-4")	1.195 m (3'-11")	460 (18)
Type D	Greater than 1.8 m (6')	1.960 m (6'-5")	1.830 m (6'-0")	460 (18)

DATE	REVISIONS
1-1-02	Deleted "Metal" from Section B-B.
1-1-98	Rev. ref. to "542101" to read "542401".

**BRIDGE APPROACH PAVEMENT (DRAIN DETAIL)**

(Sheet 1 of 2)

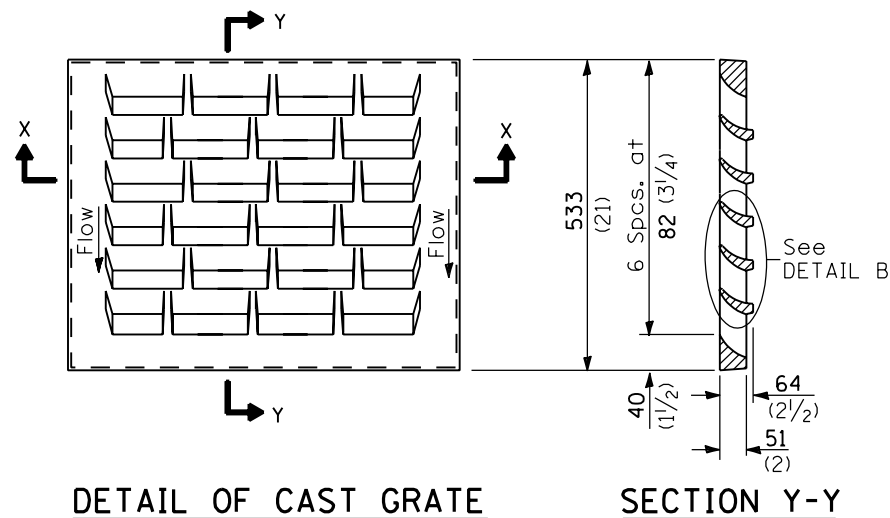
**STANDARD 609006-02**

Illinois Department of Transportation

PASSED January 1, 2002  
*Ryan Druell*  
 ENGINEER OF POLICY AND PROCEDURES

APPROVED January 1, 2002  
*Michael L. Hine*  
 ENGINEER OF DESIGN AND ENVIRONMENT

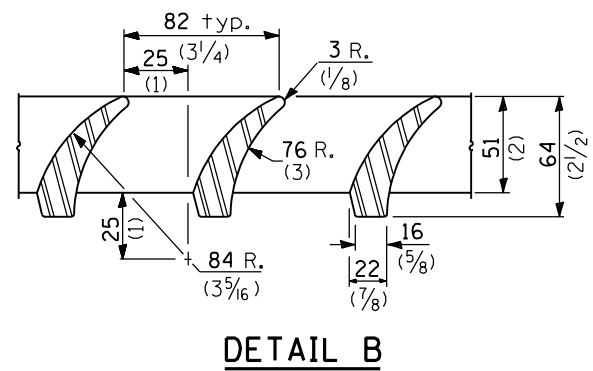
ISSUED 1-1-97



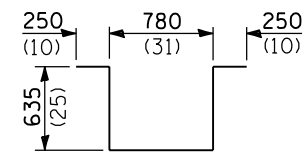
**DETAIL OF CAST GRATE**

Type B requires 1 grate  
 Type C requires 2 grates  
 Type D requires 3 grates

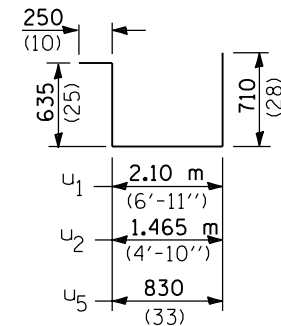
**SECTION Y-Y**



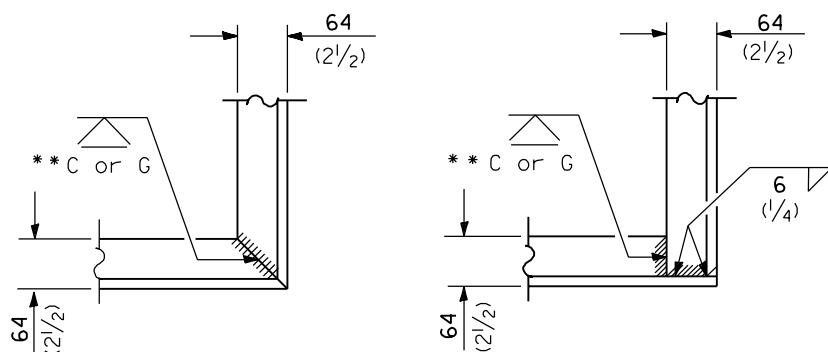
**DETAIL B**



**BAR u**



**BARS u<sub>1</sub>, u<sub>2</sub> & u<sub>5</sub>**

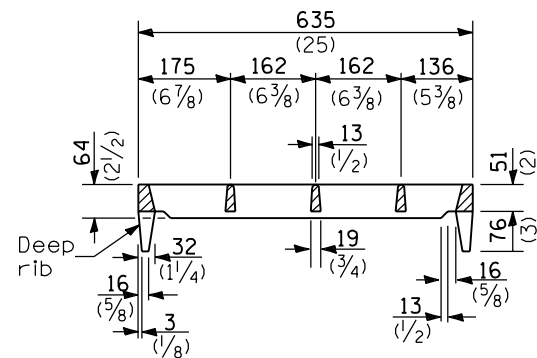


**ALT. 1**

**ALT. 2**

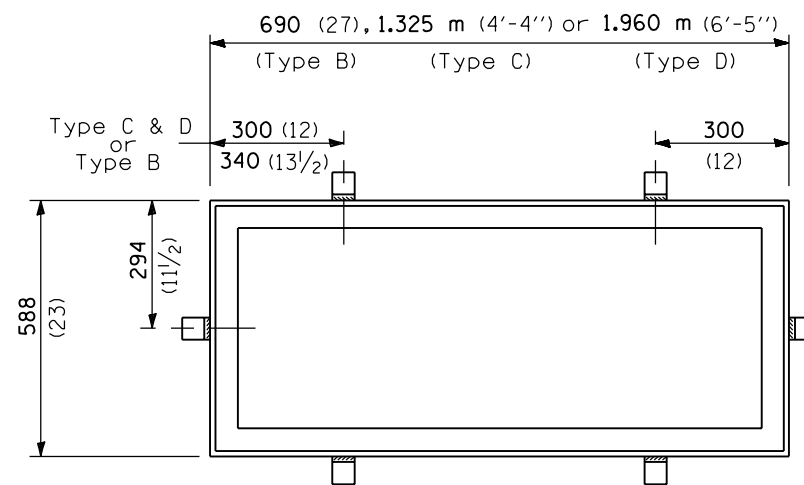
**TYPICAL CORNER of STEEL GRATING FRAME**

\*\*Cut or Grind flush



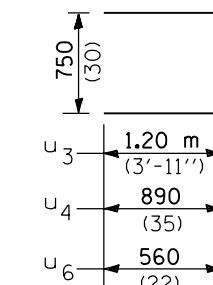
**SECTION X-X**

(Deep rib shall be omitted for end(s) resting on frame perimeter)



**DETAIL OF STEEL FRAME**

Cast frame to have same basic dimensions.



**BARS u<sub>3</sub>, u<sub>4</sub> & u<sub>6</sub>**

**INLET BOX**

REQUIRED MATERIAL

TYPE B			
Bar	Qty.	Size	Length
u	4	No. 15 (No.4)	2.550 m (8'-5")
u <sub>5</sub>	3	No. 15 (No.4)	2.425 m (8'-0")
u <sub>6</sub>	4	No. 15 (No.4)	1.870 m (6'-2")
Concrete	m <sup>3</sup> (cu. yds.)		0.4 (0.5)
Reinf. bars	kg (lbs.)		39.2 (55.0)
Grating	m <sup>2</sup> (sq. ft.)		0.34 (3.6)
TYPE C			
Bar	Qty.	Size	Length
u	6	No. 15 (No.4)	2.550 m (8'-5")
u <sub>2</sub>	3	No. 15 (No.4)	3.060 m (10'-1")
u <sub>4</sub>	4	No. 15 (No.4)	2.530 m (8'-4")
Concrete	m <sup>3</sup> (cu. yds.)		0.6 (0.8)
Reinf. bars	kg (lbs.)		54.3 (76)
Grating	m <sup>2</sup> (sq. ft.)		0.68 (7.3)
TYPE D			
Bar	Qty.	Size	Length
u	8	No. 15 (No.4)	2.550 m (8'-5")
u <sub>1</sub>	3	No. 15 (No.4)	3.695 m (12'-2")
u <sub>3</sub>	4	No. 15 (No.4)	3.150 m (10'-4")
Concrete	m <sup>3</sup> (cu. yds.)		0.8 (1.1)
Reinf. bars	kg (lbs.)		69.2 (97.0)
Grating	m <sup>2</sup> (sq. ft.)		1.02 (10.9)

All dimensions are in millimeters (inches) unless otherwise shown.

**BRIDGE APPROACH PAVEMENT (DRAIN DETAIL)**

(Sheet 2 of 2)

**STANDARD 609006-02**

Illinois Department of Transportation

PASSED January 1, 2002  
*Ryan Dinkell*  
 ENGINEER OF POLICY AND PROCEDURES

APPROVED January 1, 2002  
*Michael L. Hine*  
 ENGINEER OF DESIGN AND ENVIRONMENT

ISSUED 26-1-1-2002